



Lisxchda RK Series Desk Mount Rotary Panel RF Remote Controller User Guide

[Home](#) » [Lisxchda](#) » Lisxchda RK Series Desk Mount Rotary Panel RF Remote Controller User Guide 

Contents

- [1 Lisxchda RK Series Desk Mount Rotary Panel RF Remote Controller](#)
- [2 Model No](#)
- [3 Features](#)
- [4 Technical Parameters](#)
- [5 Warranty](#)
- [6 Mechanical Structures and Installations](#)
- [7 Match Remote Control \(two match ways\)](#)
- [8 Knob function](#)
- [9 Safety information](#)
- [10 Documents / Resources](#)
- [11 Related Posts](#)

Lisxchda

Lisxchda RK Series Desk Mount Rotary Panel RF Remote Controller



Model No

- RK1, RK2, RK3

Rotary dimming/1-3 color/Wireless remote 30m distance/CR2032 battery



RK1
1 Zone Dimming



RK2
1 Zone CCT



RK3
1 Zone RGB

Features

- Apply to single color, dual color or RGB LED controller.
- Rotate knob to change RGB color, color temperature or brightness, support long press or twice click operation.
- Each remote can match one or more receiver.
- CR2032 battery-powered.
- Desk mount, removable anywhere easily.

Technical Parameters

Input and Output	
Output signal	RF(2.4GHz)
Working voltage	3VDC(CR2032)
Working current	5mA
Standby current	10μA
Standby time	1 year
Remote distance	30m(Barrier-free space)

Environment	
Operation temperature	Ta: -30 OC ~ +55 OC
IP rating	IP20

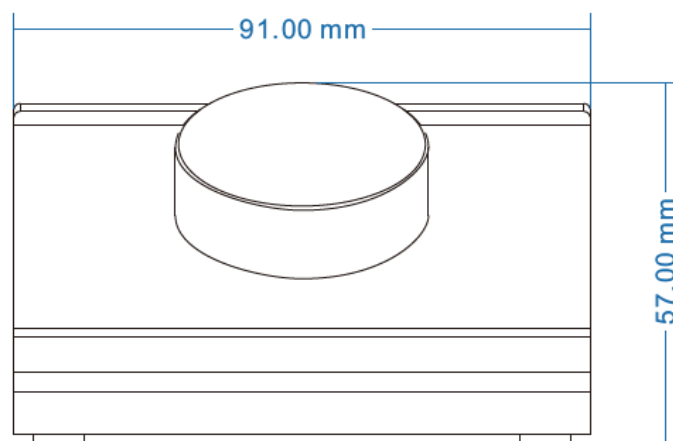
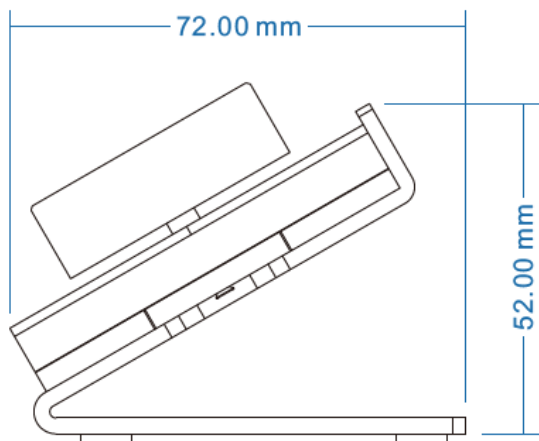
Safety and EMC	
EMC standard (EMC)	ETSI EN 301 489-1 V2.2.3 ETSI EN 301 489-17 V3.2.4
Safety standard(LVD)	EN 62368-1:2020+A11:2020
Radio Equipment(RED)	ETSI EN 300 328 V2.2.2
Certification	CE,EMC,LVD,RED

Weight	
Net weight	61g
Gross weight	118g

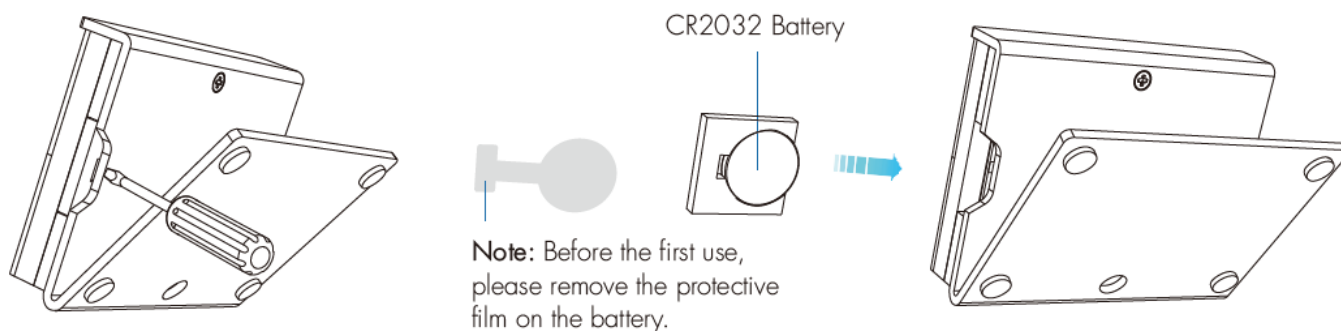
Warranty

- Warranty 5 years

Mechanical Structures and Installations



Replace battery:



Match Remote Control (two match ways)

End user can choose the suitable match/delete ways. Two options are offered for selection:

Use the controller's Match key

Match:

Short press match key, and immediately push the knob. The LED indicator fast flash a few times means the match is successful.

Delete:

Press and hold match key for 5s to delete all match, The LED indicator fast flash a few times means all matched remotes were deleted.

Use Power Restart

Match:

Switch off the power, then switch on the power, and repeat again. Immediately push the knob 3 times. The light blinks 3 times means the match is successful.

Delete:

Switch off the power, then switch on the power, and repeat again. Immediately push the knob 5 times. The light blinks 5 times means all matched remotes were deleted.

Knob function

Knob function

RK1 Single color dimming remote

- Push: Turn on or off light. After turn on light:
- Rotate: Rotate knob to adjust brightness(2.5 turns, 50 levels).
- Long push(1-6s): Continuous 256 levels brightness adjustment.



RK2 Color temperature remote

- Push: Turn on or off light. After turn on light:
- Rotate: Rotate knob to change color temperature or brightness (2.5 turns, 50 levels).
- Push twice: Switch between color temperature or brightness adjustment.
- Long push(1-6s): Continuous 256 levels brightness adjustment.



RK3 RGB remote

- Push: Turn on or off the light. After turn on light:
- Rotate: Rotate the knob to change RGB color (3 turns, 60 colors) or brightness (2.5 turns, 50 levels).
- Push twice: Switch between RGB color or brightness adjustment.
- Long push(1-6s): Continuous 256 levels of brightness adjustment.




Safety information

1. Read all instructions carefully before you begin this installation.
2. When installing the battery, pay attention to the battery's positive and negative polarity. After a long time without the remote control, remove the battery. When remote distance becomes smaller and insensitive, replace the battery.
3. If no response from the receiver, please re-match the remote.
4. Gently handle the remote, beware of falling.
5. For indoor and dry location use only.

RK1, RK2, RK3 Desk Mount Rotary Panel RF Remote Controller.

Documents / Resources

	<p>Lisxchda RK Series Desk Mount Rotary Panel RF Remote Controller [pdf] User Guide RK Series Desk Mount Rotary Panel RF Remote Controller, RK Series, Desk Mount Rotary Panel RF Remote Controller, Desk Mount Remote Controller, Desk Mount, RK1, RK2, RK3</p>
---	--