

LIPPERT OneControl Control Panel



Contents [[hide](#)]

- 1 Introduction
- 2 Preparation
- 3 Programming
- 4 Operation
- 5 Customer Support
- 6 Documents / Resources
 - 6.1 References

Introduction

The One Control® tablet is an Android-based device that uses the One Control user interface to bring system controls and monitoring software, to a touchscreen tablet. The One Control tablet can access the internet (if available), basic how-to RV videos, product videos, owner's manuals and many more RV owner's resources.

The systems controlled and monitored by One Control include slide-outs, leveling systems, awnings, lighting, temperature, water tanks, tire pressure, battery levels and many more.

For additional support on this product, please visit: <https://support.lci1.com/one-control-wireless-formerly-myrv>.

Note: Images used in this document are for reference only when assembling, installing and/or operating this product. Actual appearance of provided and/or purchased parts and assemblies may differ.

Preparation

The One Control Control Panel is accessed within the One Control application on the tablet. When powering on or waking the tablet, the One Control application will run automatically as it is pre-configured to do so. In order for the One Control application to present the operator with the MyRV Control Panel, there **MUST** be power to the coach. This will power the various One Control controllers located throughout the unit. This will also power the wireless hub and enable connectivity with the tablet, ultimately

allowing wireless connectivity. Please note that with power to the coach, the tablet should always be able to gain access to the One Control Control Panel when placed in the docking station due to it being a wired connection. Use this to assist when diagnosing concerns with the system.

Note: After powering up the RV, it may take several minutes (2-5) for the One Control tablet and One Control Hub to fully energize and communicate. Please allow this time for the system to establish communications to ensure swift application operations.

Programming

Connecting To The One Control Wireless Network

Note: Tablet MUST be connected to One Control Wifi Hub to complete the programming process. Placing the hub in a high location away from appliances such as microwaves and refrigerators will minimize interference.

1. On the One Control home page, select “Apps & Internet.”
2. On the “Apps and Internet Browser,” select the “WiFi Manager.”
3. Locate the One Control Hub (**Fig. 1**) or Range Extender (**Fig. 2**) and the label which contains the SSID and password to the One Control system.
4. Match the SSID on the One Control Hub or Range Extender (**Figs. 1A and 2A**) to the corresponding SSID in the “Wifi Manager.”
5. Select the SSID and enter the password located on the One Control Hub or Range Extender (**Figs. 1B and 2B**) then press “Connect.”

Note: In order to charge the tablet out of the dock, a 5 volt, 1.8 amp micro USB charger or barrel charging connector is needed.

Fig. 1

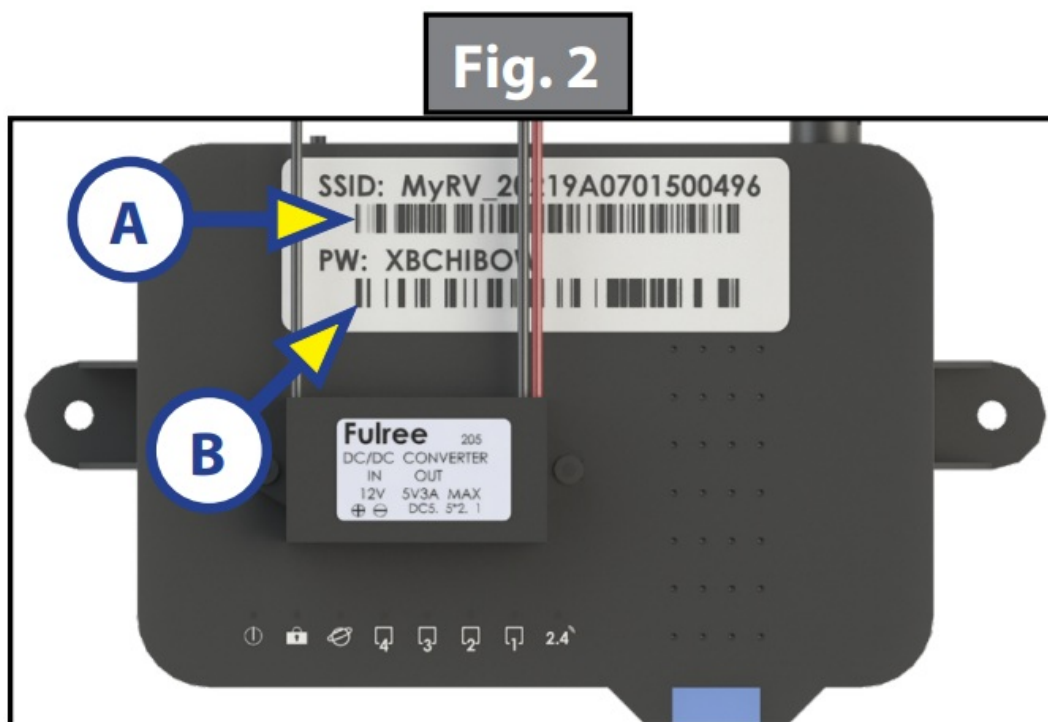


Docking Station

The One Control system includes a tablet docking station. This is typically mounted near the center of the coach, and houses the tablet when the wireless operation is unnecessary or during travel. The docking station is wired to the coach power system and will charge the tablet during its storage period. The docking station is also wired for communication with the various controllers in the coach. This allows the tablet to function when stored in the dock and becomes non-reliant on the wireless hub to do so.

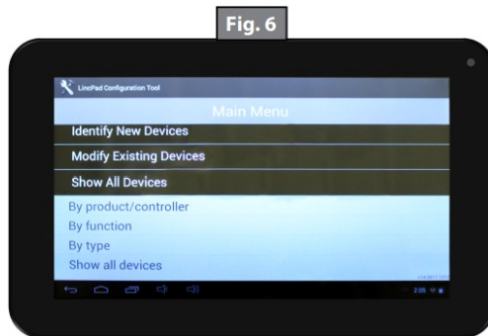
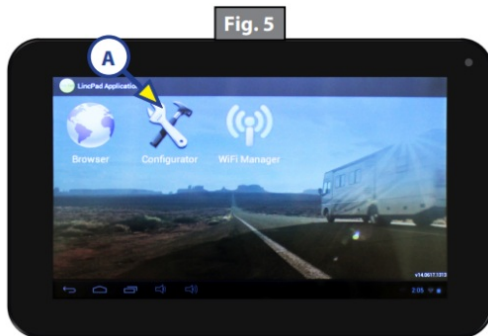
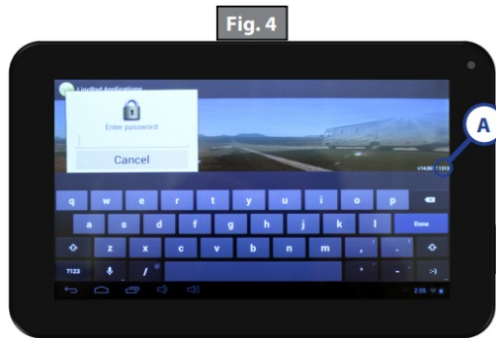
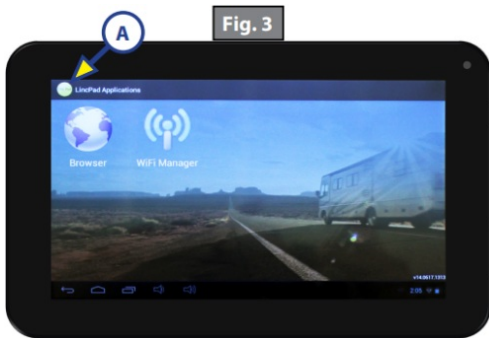
Wireless Hub and Range Extender

The One Control system is equipped with a wireless hub and range extender. When powered, the hub and range extender provide the perimeter of the coach with wireless connectivity. This allows the tablet to effectively send commands wirelessly to the One Control system. The hub's and range extender's only purpose is to provide wireless connectivity. The hub and range extender do not keep configuration data, so when troubleshooting wireless connection concerns, ensure the tablet can operate the One Control Control Panel when housed in the docking station. Again, as long as there is power to the coach, the One Control system should operate from the dock.



One Control Functions

1. Press the yellow Linc Pad Applications icon 5 times (**Fig. 3A**).
2. A pop-up window will prompt the user to enter password (**Fig. 4**). The password is the last 4 digits of the version located in the bottom right hand of the tablet desktop (**Fig. 4A**).
3. After a password is entered, the Configurator Icon will appear (**Fig. 5A**). Press the Configurator Icon.
4. To view all components available, press “Show All Devices” (**Fig. 6**). (A sub list will appear with options: By product/controller, By functions, By type, Show all devices.)



5. Select the relay (latching or reversing polarity) switch or tank sensor to assign a title (**Fig. 7**).
6. When window pops up select “Rename” (**Fig. 8**).
7. Select “Group”.
8. Select “Name”.
9. Press “Send” to set group and name selected (**Fig. 9**).
10. Repeat process for each function.

Fig. 7

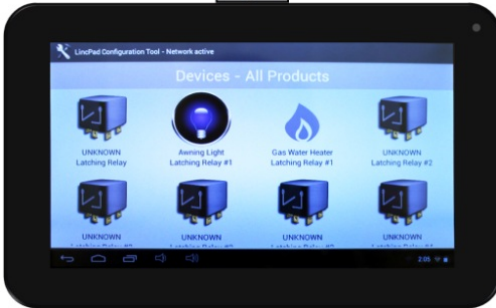
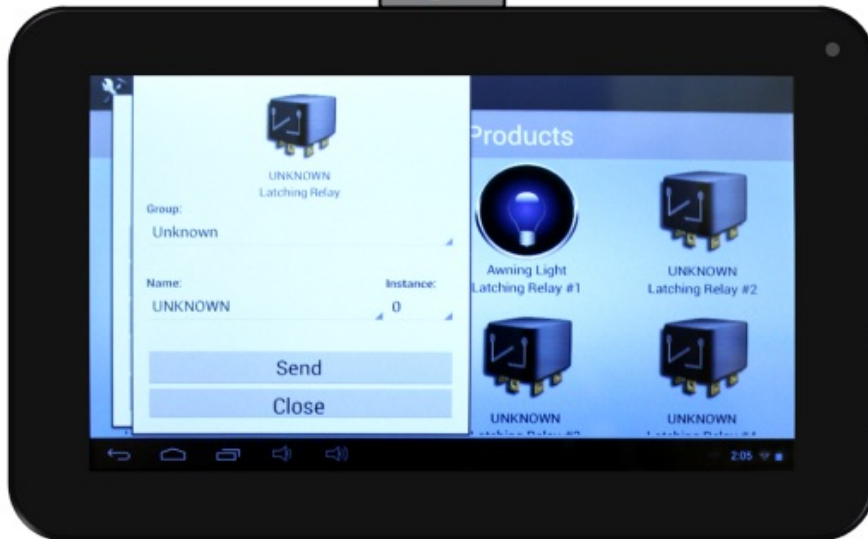


Fig. 8



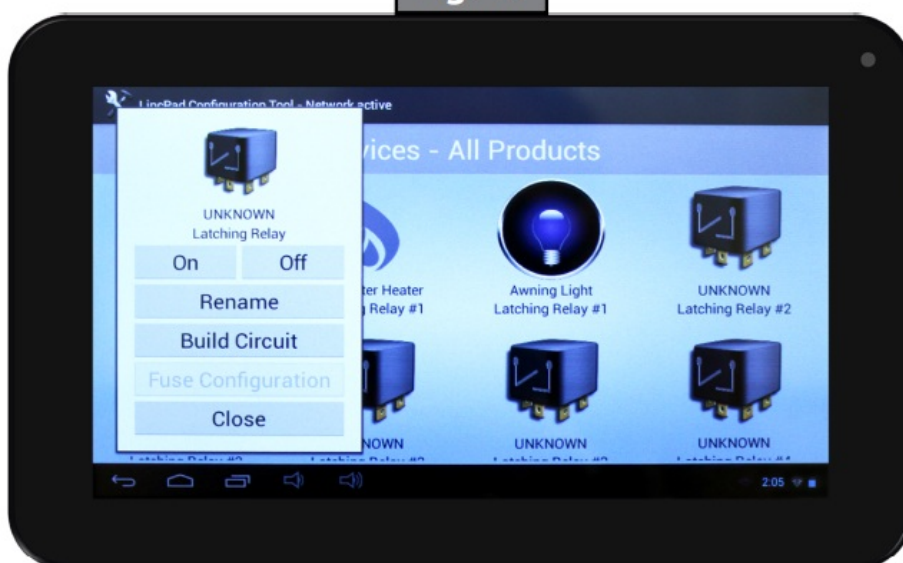
Fig. 9



Circuit Building For One Control Smart Switch

1. Press “Build Circuit” (**Fig. 10**).

Fig. 10



2. Select first device by pressing the preferred icon. Then press Select when the pop-up window shows up on the screen (**Fig. 11**). Device title will highlight in yellow (**Fig. 12**).
3. Repeat process for each device included in the circuit.

- Once you have selected (highlighted) all devices for the circuit, press one of the highlighted device icons. Press “Create Circuit” in pop-up window (**Fig.13**). The next screen will show all devices included in the circuit and assign a circuit number (**Fig. 14**).

Fig. 11



Fig. 12

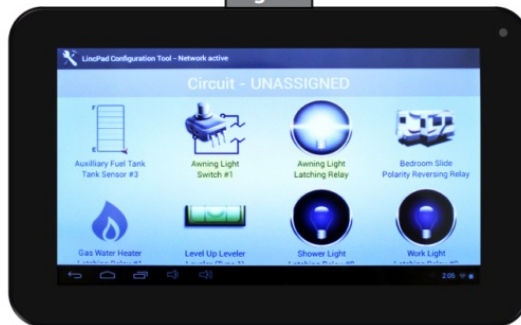
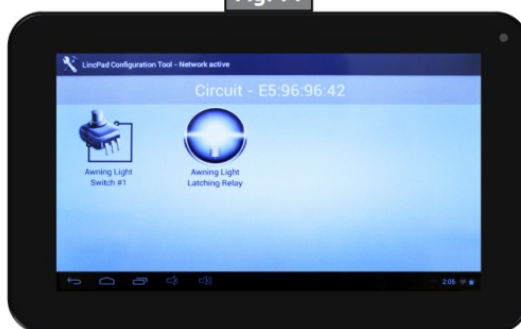


Fig. 13



Fig. 14



Multifunction Fuse Programming

- Enter the One Control configurator screen by tapping the yellow Linc Pad Applications icon five (5) times (**Fig. 15A**). You will then be prompted to enter a four-digit password (**Fig. 15B**). The password is the last four digits of the version number (**Fig. 15C**).
- Choose the “Configurator” option (**Fig. 16A**).

Fig. 15

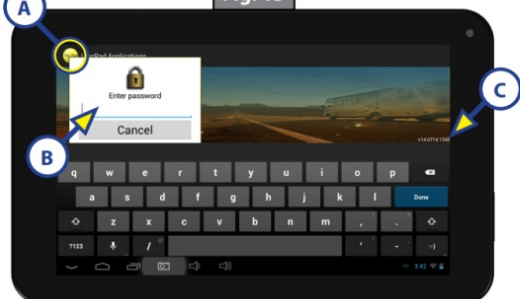
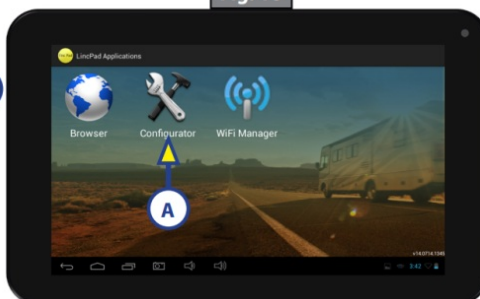


Fig. 16



- Choose the “Show All Devices” option (**Fig. 17A**).
- Choose the “By Product/Controller” option (**Fig. 18A**). This will display all of the products and controllers connected to the Linc system.
- Press and HOLD the “Multifunction 8-Output” option (**Fig. 19A**). You will then be prompted to configure the fuses. Choose “OK” (**Fig. 20A**) to enter fuse configuration.

Fig. 17

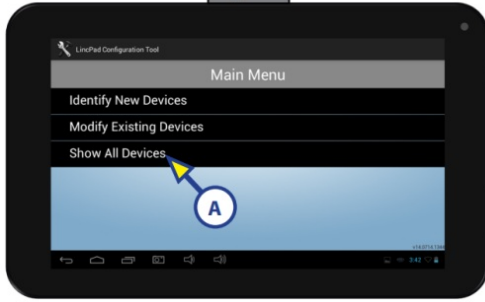


Fig. 18

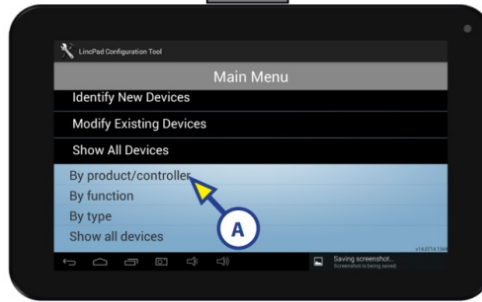


Fig. 19

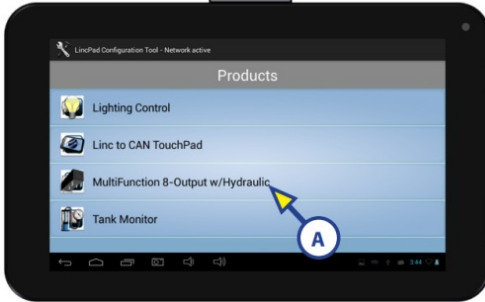
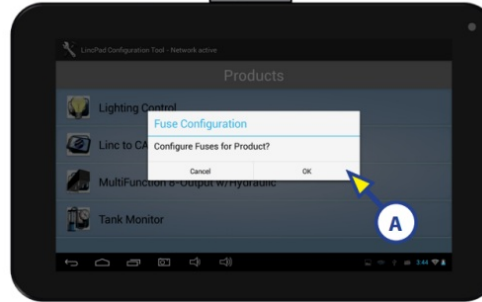


Fig. 20



6. When in the fuse configuration menu, a list of all labeled and unlabeled relay functions will appear (**Fig.21**). Select the fuse location from the drop down menu on the right (**Fig. 21A and Fig. 22**).

Fig. 21

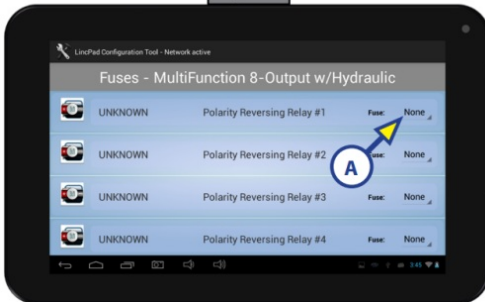
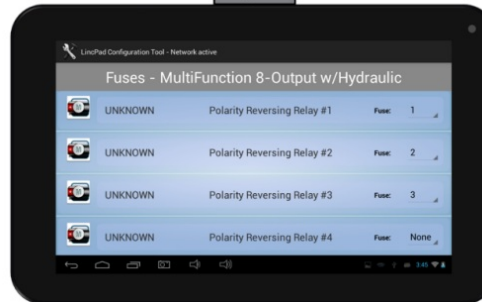


Fig. 22



7. Once all fuse locations are chosen, press and HOLD anywhere on the screen for a pop up menu confirming the fuse locations. Press and hold the sync button on the multifunction receiver (**Fig 23A**). While holding the sync button, press “OK” on the “Send All” prompt (**Fig. 24A**). This will program all fuse positions.

Fig. 23

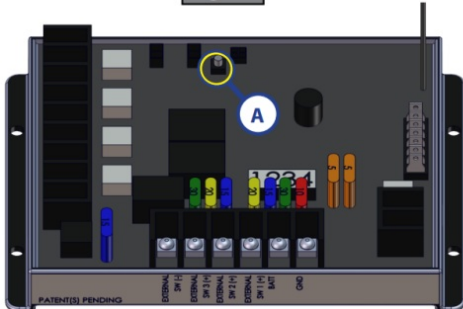
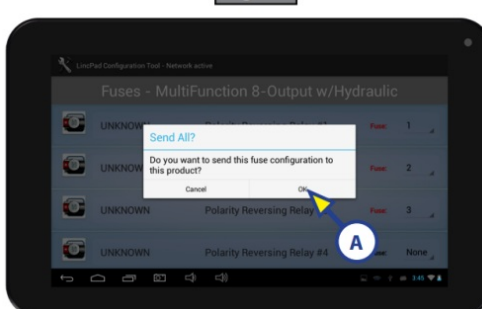


Fig. 24



Operation

Power On/Off

1. To power ON the tablet, hold and release the power button for 2-3 seconds (**Fig. 25**).

Note: It will take a few moments to start up and load the system.

2. To enter or exit sleep mode, press and release power button.
3. To power OFF the tablet, press and hold the power button until a utility screen appears.
4. Select "Power off".
5. Press "OK" when confirmation box displays: "Your tablet will shut down." (**Fig. 27**).

Volume Button

1. Volume control is located on the side of the tablet (**Fig. 25**). There is also a volume icon on the menu screen.

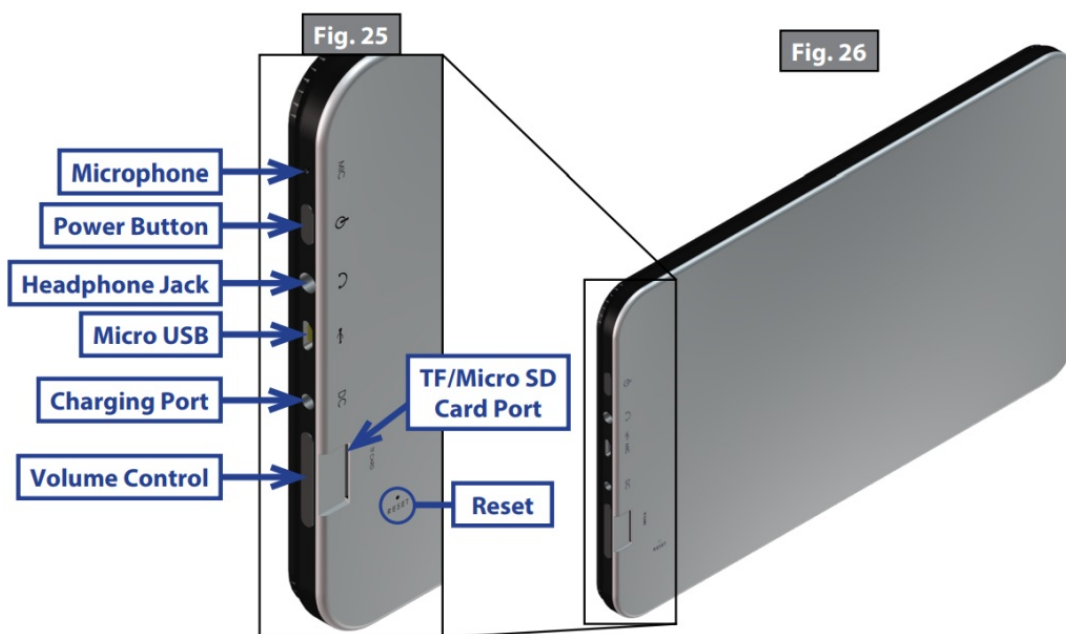
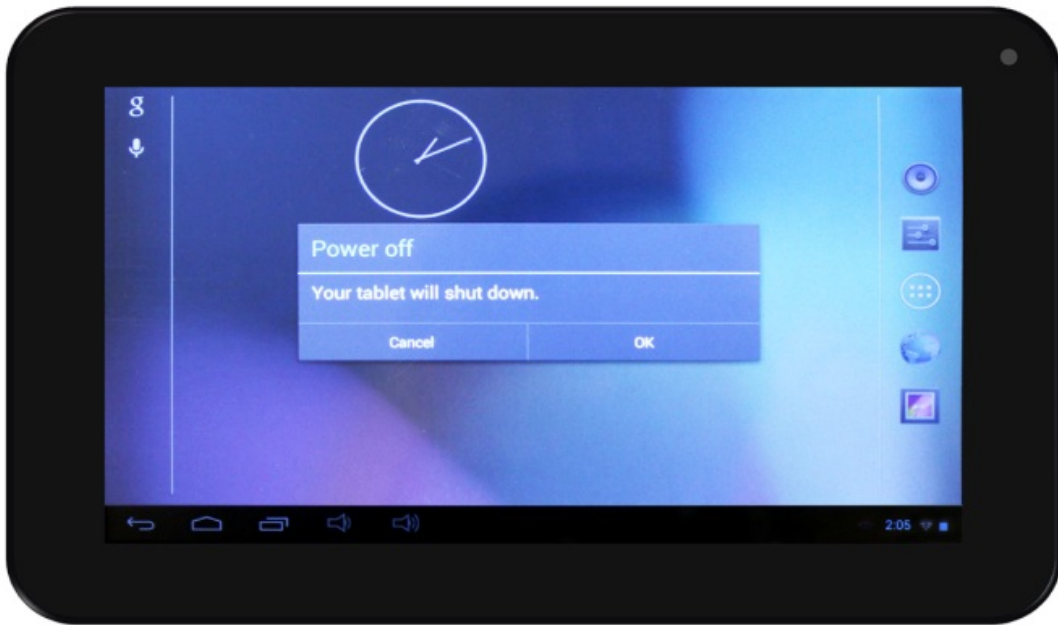


Fig. 27



One Control Control Panel

1. Locate the “One Control Control Panel” on the menu screen (**Fig. 28A**).
2. Pushing the “One Control Control Panel” tab will open the “One Control Applications” screen. This screen will display all the icons of the devices on the RV that can be operated with the One Control Tablet.
3. Push the icon of the device you wish to operate.
4. Push the “Home” icon button, located in top right of screen, to return to “One Control application” home screen.

Note: One Control tablet includes text and video resources, including owner’s manuals and troubleshooting videos.

Fig. 28



Notes

Customer Support

The contents of this manual are proprietary and copyright protected by Lippert. Lippert prohibits the copying or dissemination of portions of this manual unless prior written consent from an authorized Lippert representative has been provided. Any unauthorized use shall void any applicable warranty. The information contained in this manual is subject to change without notice and at the sole discretion of Lippert. Revised editions are available for free download from lippert.com.

Please recycle all obsolete materials.

For all concerns or questions, please contact Lippert

Ph: 432-LIPPERT ([432-547-7378](tel:432-547-7378))

Web: lippert.com

Email: customerservice@lci1.com



Documents / Resources



[LiPPERT OneControl Control Panel \[pdf\]](#) Instruction Manual
CCD-0001736, OneControl Control Panel, OneControl, Control Panel, Pa
nel

References

- [User Manual](#)

📁 LIPPERT 🔍 CCD-0001736, Control Panel, LIPPERT, OneControl, OneControl Control Panel, Panel

Leave a comment

Your email address will not be published. Required fields are marked *

Comment *

Name

Email

Website

☐ Save my name, email, and website in this browser for the next time I comment.

Post Comment

Search:

e.g. whirlpool wrf535swhz

Search

[Manuals+](#) | [Upload](#) | [Deep Search](#) | [Privacy Policy](#) | [@manuals.plus](#) | [YouTube](#)

This website is an independent publication and is neither affiliated with nor endorsed by any of the trademark owners. The "Bluetooth®" word mark and logos are registered trademarks owned by Bluetooth SIG, Inc. The "Wi-Fi®" word mark and logos are registered trademarks owned by the Wi-Fi Alliance. Any use of these marks on this website does not imply any affiliation with or endorsement.