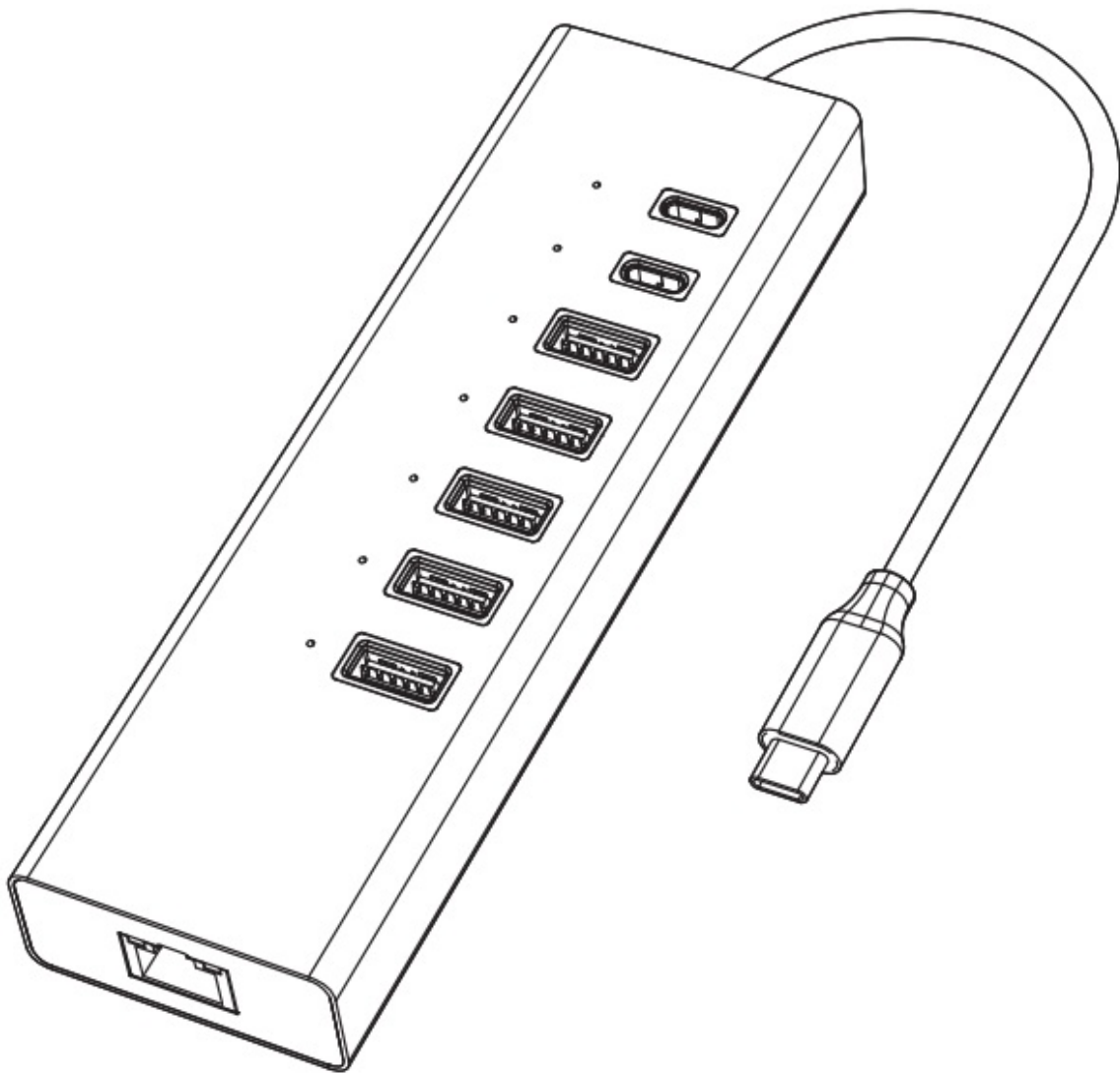




# LIONWEI LIUC4104 USB C Multi Functional Hub Adapter Instruction Manual

[Home](#) » [LIONWEI](#) » LIONWEI LIUC4104 USB C Multi Functional Hub Adapter Instruction Manual 

LIONWEI LIUC4104 USB C Multi Functional Hub Adapter



## Contents

- [1 Product Introduction](#)
- [2 Structure Diagram](#)
- [3 Features](#)
- [4 Connection](#)
- [5 Graphics Settings for win10](#)
  - [5.1 Clone mode](#)
  - [5.2 Extended Desktop](#)
- [6 Resolution Setting for Mac](#)
- [7 Sound Setting for Mac](#)
- [8 Graphics Settings for Mac](#)
  - [8.1 Mirror Display](#)
  - [8.2 Extend Display](#)
- [9 Storage Conditions](#)
- [10 FAQ](#)
- [11 Documents / Resources](#)
- [12 Related Posts](#)

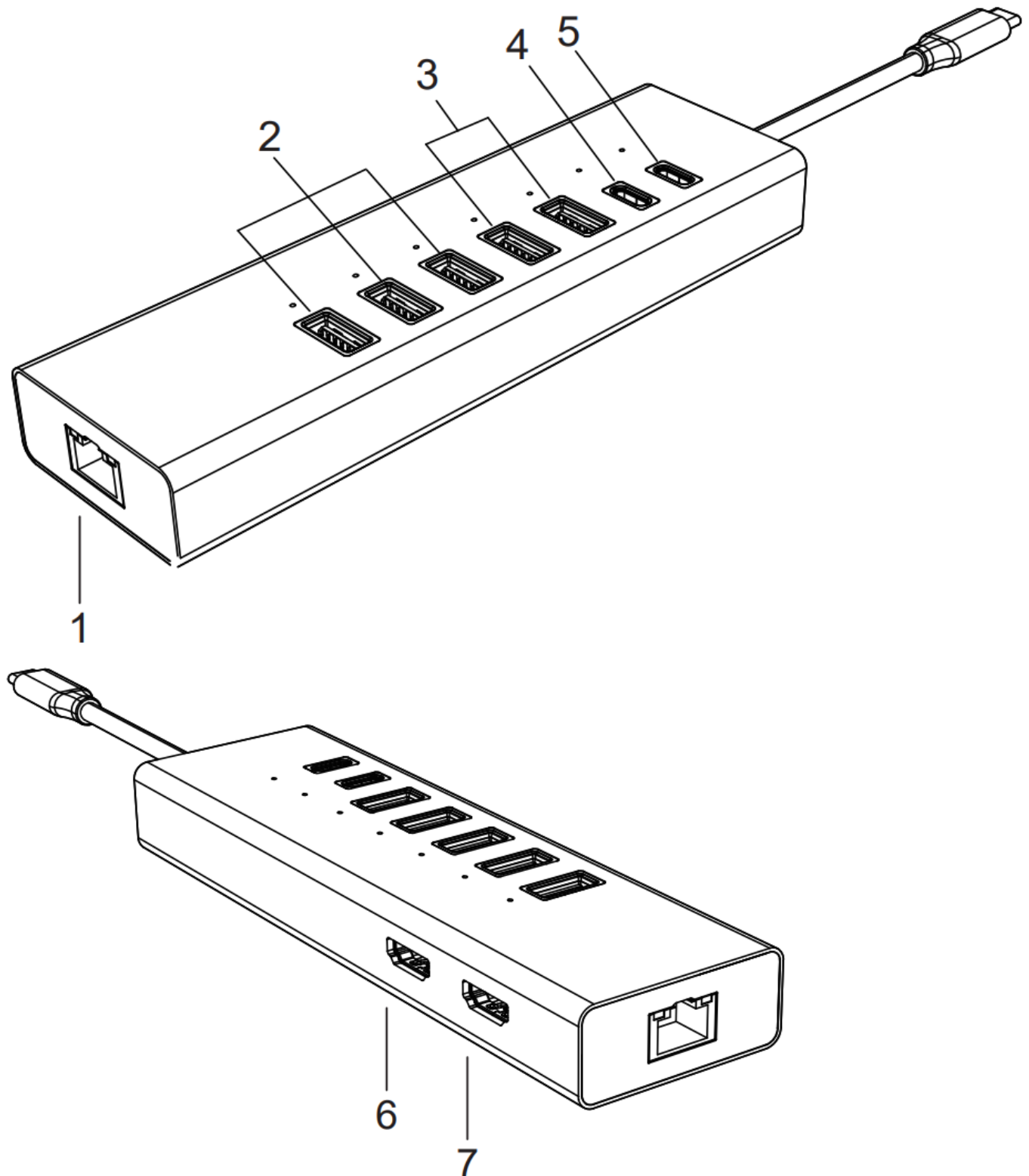
## Product Introduction

This is an alloy multi-function USB-C HUB adapter. It mainly extends the USB-C interface of the source device to HDMI x2,RJ45, USB3.0X3, USB3.1X2, USB-C and PD.

Note:

The USB-C source devices (mobile/notebook/tablet PC) must support video output.

## Structure Diagram



- 1. RJ45
- 2. USB 3.0
- 3. USB 3.1
- 4. USB-C(Data)
- 5. USB-C PD3.0

6. **HDMI 1**
7. **HDMI 2**

## Features

1. **RJ45:**

Up to 1000Mbps, stable wired access for high-speed connectivity.

2. **USB 3.0:**

Up to 5Gbps data speed & maximum power output 5V/0.9A,  
backwards compatible with USB2.0/USB1.1.

3. **USB 3.1:**

Up to 10Gbps data speed & maximum power output 5V/0.9A,  
backwards compatible with USB3.0/USB2.0/USB1.1.

4. **USB-C Data:**

Up to 10Gbps data speed, backwards compatible with  
USB3.0/2.0/1.1.

5. **USB-C PD3.0:**

Upstream charging the source devices such as Laptop/Notebook,  
Support 100W power in, charging limited to 87-96W for safety,  
affected by different firmware.

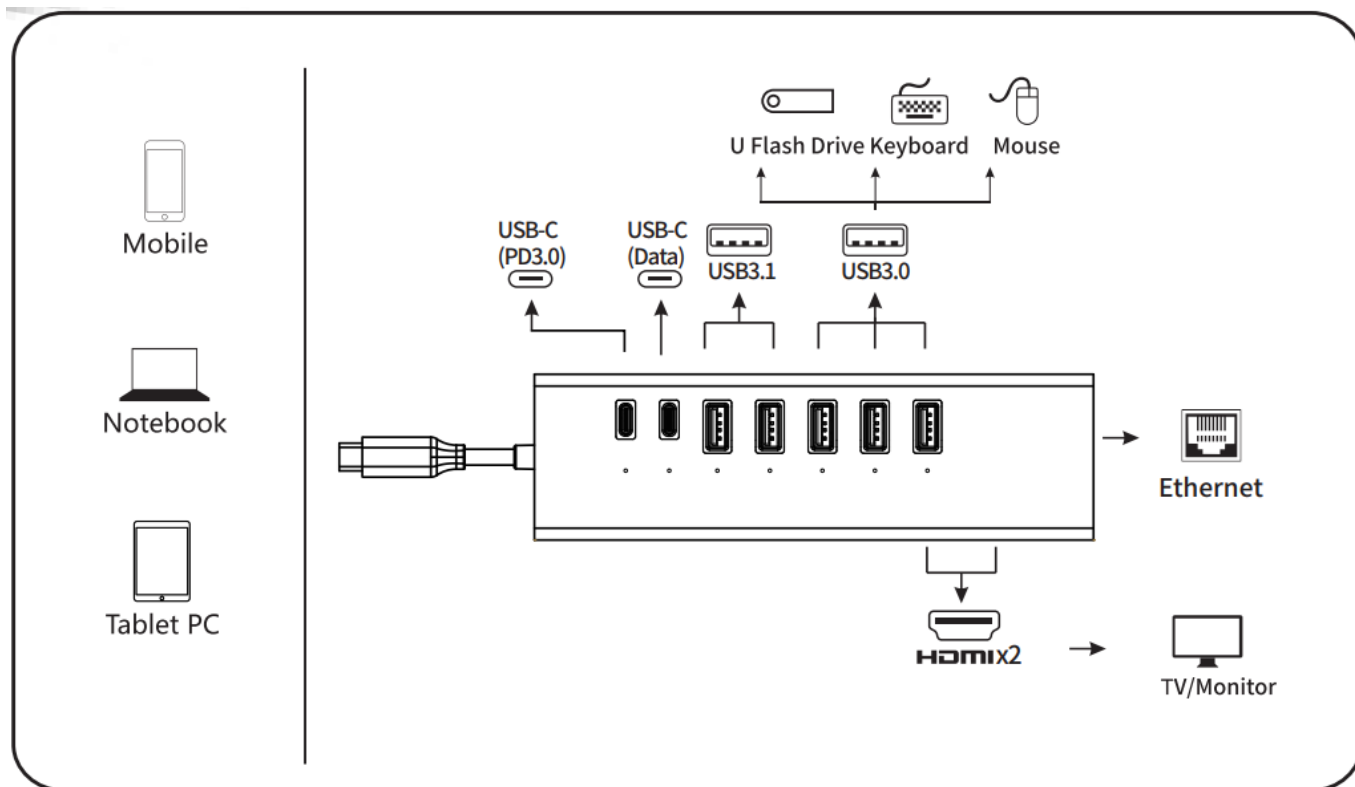
6. **HDMI 1:**

4Kx2K 60Hz / 3840×2160 max(work separately while source is DP1.4).  
4Kx2K 30Hz / 3840×2160 max(two HDMI work simultaneously).

7. **HDMI 2:**

4Kx2K 30Hz / 3840×2160 max work separately or simultaneously while source is DP1.2 or above).


## Connection



## Graphics Settings for win10

### Clone mode

click desktop >Graphics Settings >Display

<p>General Settings</p> <p>Settings</p> <p>Multiple Settings</p> <p>Resolutions</p> <p>ort Topology</p> 	<p>Select Display Mode</p> <p>Single Display <span>1</span> <span>2</span> <span>3</span></p> <p>✓ Clone Display <span>Detect</span></p> <p>Extended Desktop</p> <p>Collage</p>
	<p>Select One or More Active Displays</p> <p>Built-in Display ▼</p> <p>HDMI Display ▼</p> <p>HDMI Display ▼</p>



ce device




HDMI Display



HDMI Display

### Extended Desktop

Right click desktop >Graphics Settings >Display

General Settings	Select Display Mode
Color Settings	Single Display <span>1</span> <span>2</span> <span>3</span>
Multiple Settings	Clone Display Detect
Custom Resolutions	✓ Extended Desktop
DisplayPort Topology	Collage
	Select One or More Active Displays
	Built-in Display ▼
	HDMI Display ▼
	HDMI Display ▼



Source device



HDMI Display



HDMI Display



Source device



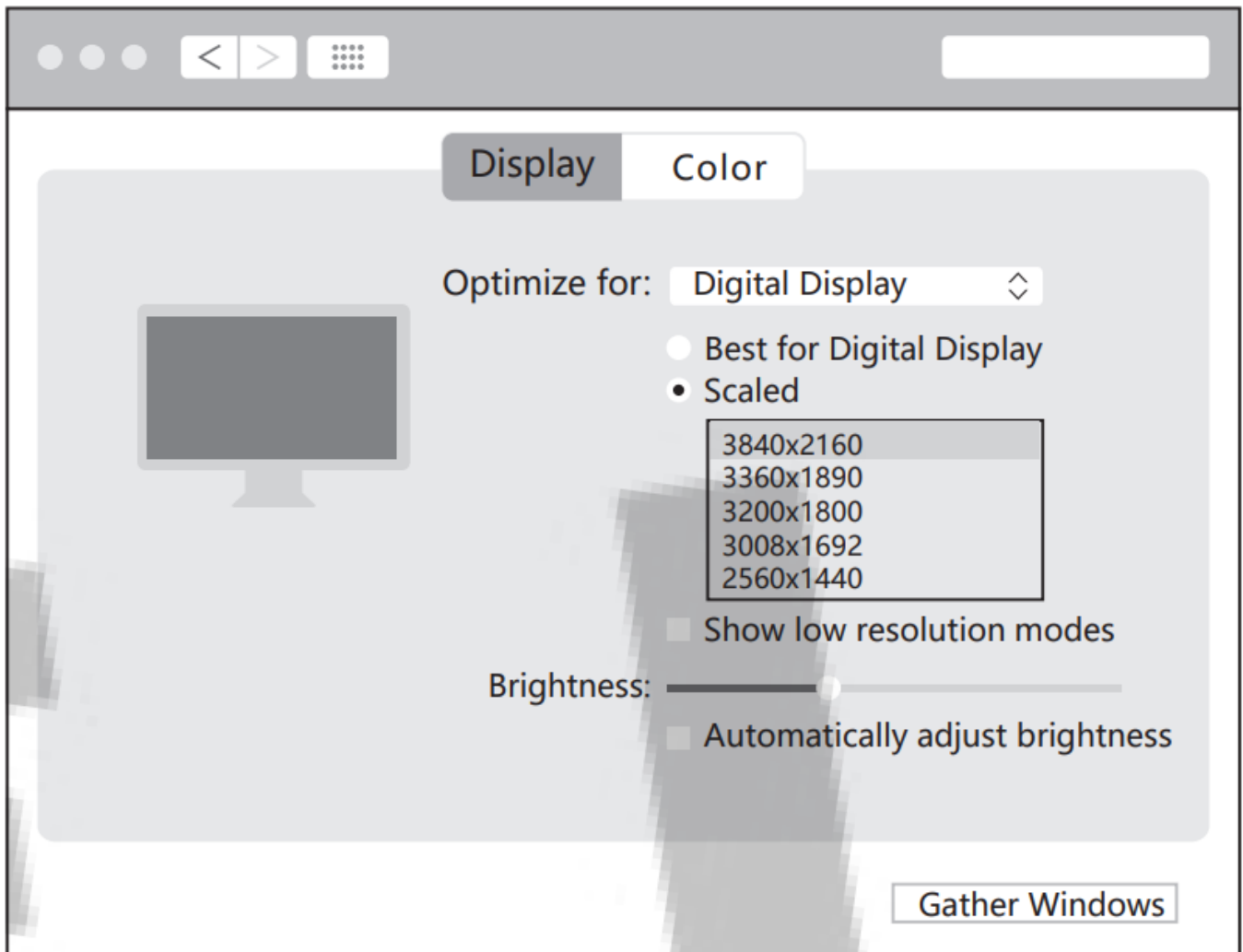
HDMI Display



HDMI Display

### Resolution Setting for Mac

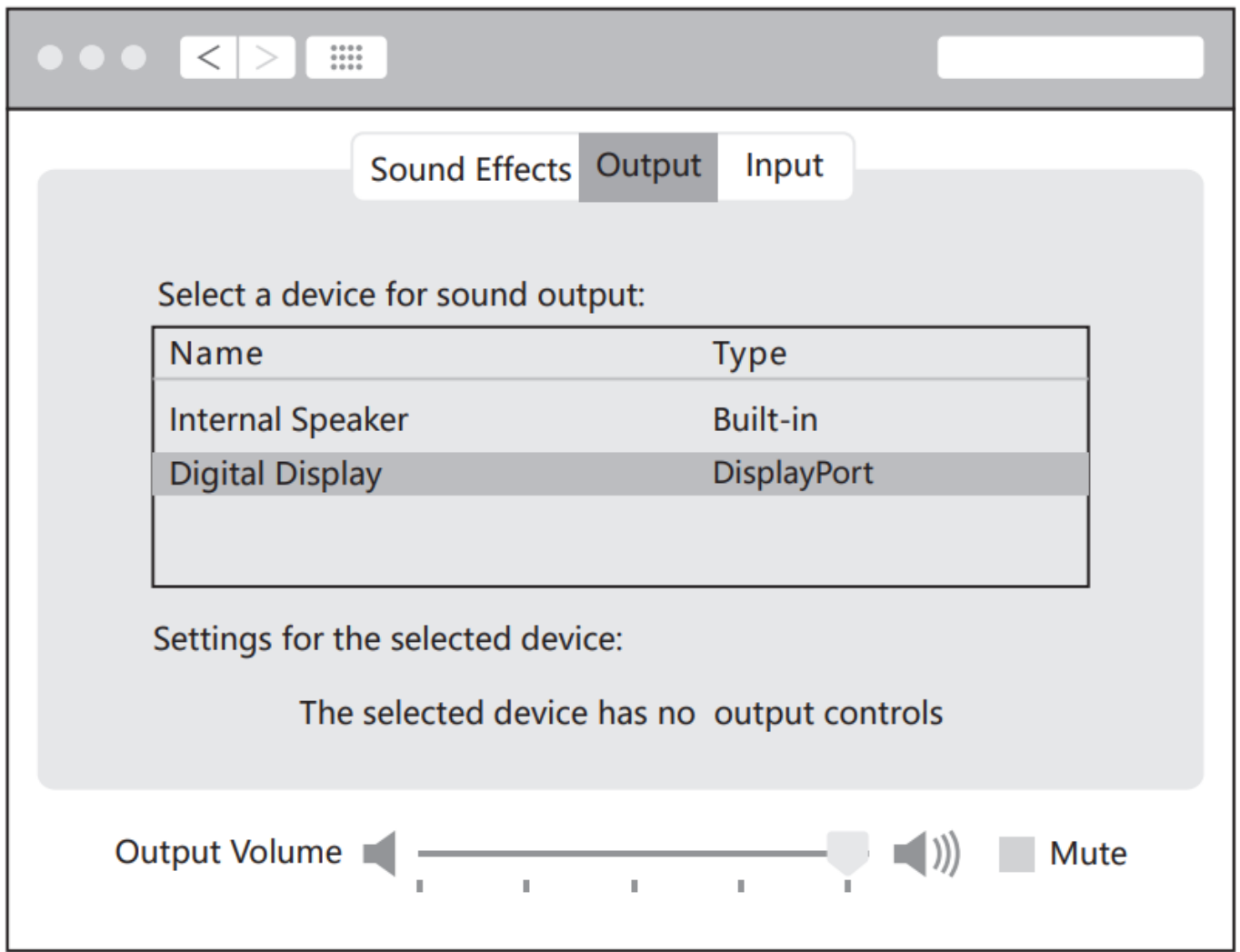
Apple logo>System Preferences>Displays



## Sound Setting for Mac

Apple logo>System Preferences >Sound

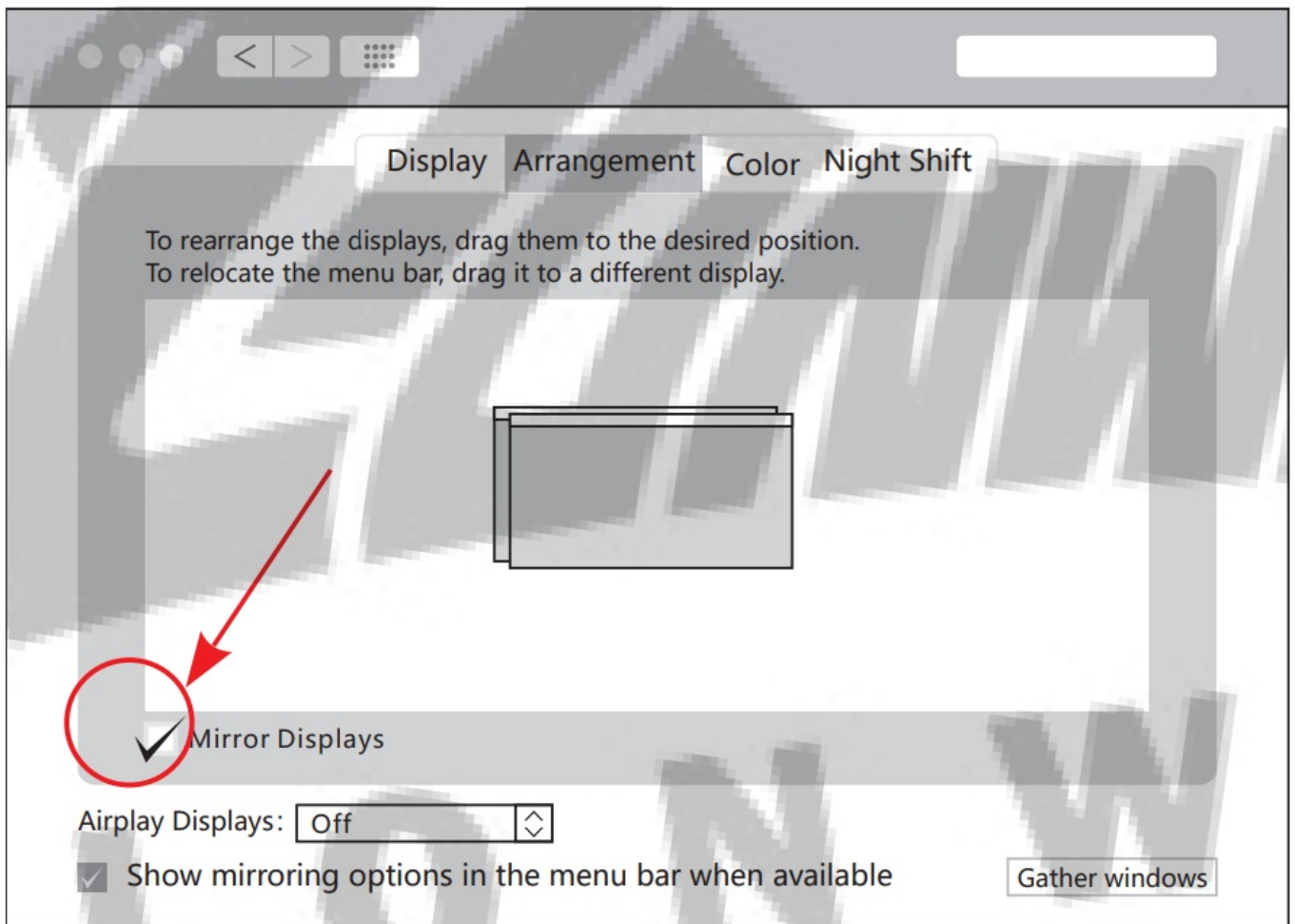




## Graphics Settings for Mac

### Mirror Display

Apple logo>System Preferences >Displays



Source device



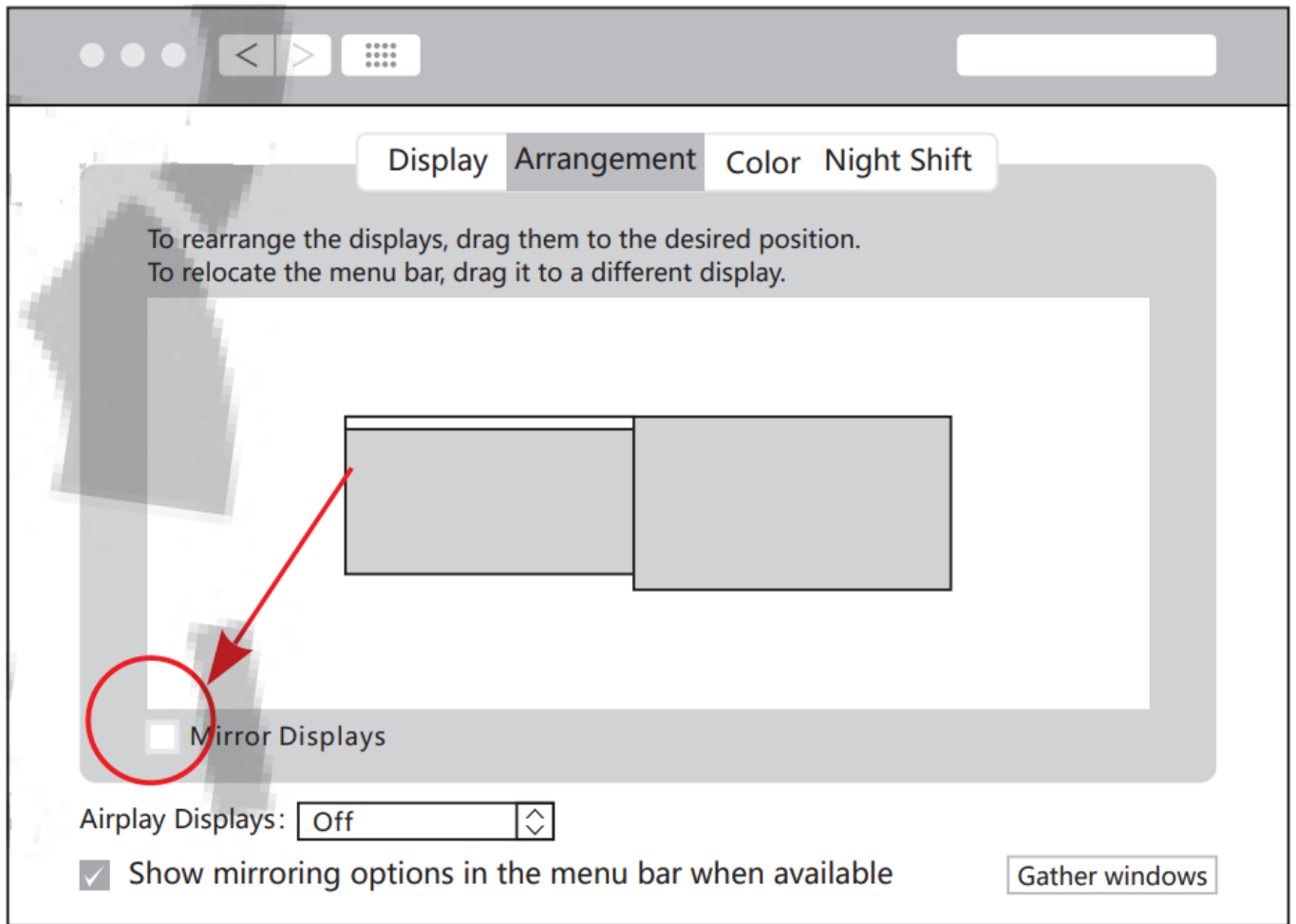
HDMI Display



HDMI Display

### Extend Display

Apple logo>System Preferences >Displays



Source device



HDMI Display



HDMI Display

## Storage Conditions

Ambient Operating Temperature: 0°C to 40°C(32°F to 104°F)

Storage Temperature: -20°C to 85°C(-4°F to 185°F)

Ambient Operating Humidity: 20%-90%RH

Storage Humidity: 5%-95%RH

## FAQ

### A. Why is there no video output?

1. Please make sure the USB-C port of your devices (Laptop/Tablet) support Video Output.
2. Please check if the cable is well connected.
3. Please use the standard HDMI cable.
4. Windows computer with Intel graphics card only supports two external monitors at most.

### B. Why is there no audio output from HDMI?

1. Please make sure your monitor support Audio output function.
2. Please set the external monitor as default Audio output device.

### C. What should I do if the display screen drops after connecting a large current HDD/SSD? Please connect your laptop charger/adaptor to the USB-C PD charging port of product.


### D. Why does the output not reach 4K 60Hz?

1. Please make sure your monitor support 4K 60Hz.
2. Please make sure the video source is 4K 60Hz.
3. Please make sure to use the 2.0 or higher version HDMI cable.
4. Please make sure your computer specification support DP1.4 signal output.

The terms HDMI, HDMI High-Definition Multimedia Interface, and the HDMI Logo are trademarks or registered trademarks of HDMI Licensing Administrator, Inc.



## Documents / Resources

	<a href="#">LIONWEI LIUC4104 USB C Multi Functional Hub Adapter</a> [pdf] Instruction Manual LIUC4104, USB C Multi Functional Hub Adapter, LIUC4104 USB C Multi Functional Hub Adapter
---	---