



# LIONWEI LIUC3908 USB C Docking Station Instruction Manual

[Home](#) » [LIONWEI](#) » LIONWEI LIUC3908 USB C Docking Station Instruction Manual 

## Contents

- [1 LIONWEI LIUC3908 USB C Docking Station](#)
- [2 Product Usage Instructions](#)
- [3 Product Introduction](#)
- [4 Structure Diagram](#)
- [5 Feature](#)
- [6 Connection](#)
- [7 Graphics Settings for Window 10](#)
- [8 Graphics Settings for Mac](#)
- [9 Storage Conditions](#)
- [10 FAQ](#)
- [11 Documents / Resources](#)
  - [11.1 References](#)
- [12 Related Posts](#)



**LIONWEI LIUC3908 USB C Docking Station**



**All-in-one Multifunction USB-C Hub** This All-in-one Multifunction USB-C hub offers convenient access to multiple devices on your USB-C Laptop/MacBook. The hub is equipped with Triple Display video outputs (2x HDMI & 1x DisplayPort), allowing you to split up the content to Triple display devices when the system supports the function. It has a total of 13 interfaces:

- 2x HDMI
- 1x DisplayPort
- 1x RJ45 Gigabit Ethernet
- 2x USB-C PD charging+ data transfer
- 1x USB3.1
- 3x USB3.0
- 2x USB2.0
- 1x 3.5mm Audio/Mic

Simply plug and play to expand your laptop's capabilities.

## Product Usage Instructions

### Graphics Settings for Windows 10:

1. Clone Mode: Right click desktop > Graphics Settings > Display
2. Extended Desktop: Right click desktop > Graphics Settings > Display

### Graphics Settings for Mac:

1. Mirror Display: Apple logo > System Preferences > Displays
2. Extend Display: Apple logo > System Preferences > Displays

### General Settings:

- Select Display Mode

- Color Settings
- Clone Display
- Detect
- Display Arrangement
- Night Shift

#### **Additional Information:**

- The hub is backwards compatible with USB3.0/2.0/USB1.1.
- The USB-C PD + Data port supports up to 100W power in and up to 10Gbps data speed.
- The HDMI ports support video output resolutions of 4Kx2K 60Hz / 3840×2160 (when the source is DP1.4) and 4Kx2K 30Hz / 3840×2160 (when the source is DP1.2).
- The USB-A 3.0 ports support up to 5Gbps data speed and maximum power output of 5V/0.9A. They are also backwards compatible with USB2.0/USB1.1.
- The USB-A 2.0 ports support up to 480Mbps data speed and are designed for the connection of 2.4 GHz wireless devices, such as wireless keyboards/mouse adapters, etc.
- The RJ45 Gigabit Ethernet port provides stable wired access for high-speed connectivity, supporting speeds of up to 1000Mbps.

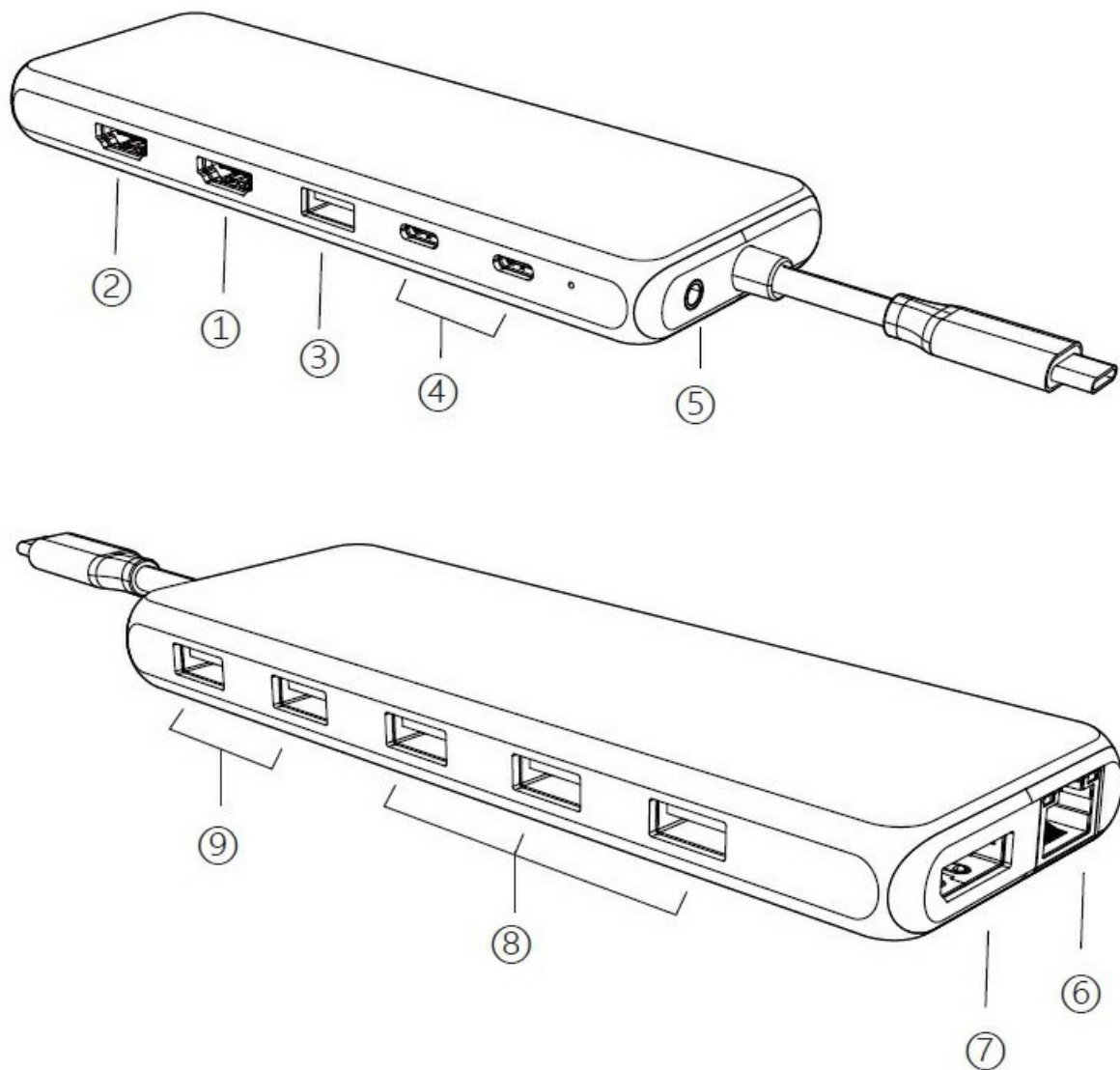
**Note:** Mac OS does not support MST (Multi-Stream Transport). The maximum resolution will be limited to 4K@30Hz when Dual or Triple monitors are connected.

#### **Product Introduction**

This All-in-one Multifunction USB-C hub offers convenient access to multiple devices on your USB-C Laptop/MacBook.

The hub is equipped with Triple Display video outputs (2x HDMI & 1x DisplayPort), it allows you to split up the content to Triple display devices when the system supports the function. Extended 13 interfaces: 2x HDMI, 1x DP, 1x RJ45 Gigabit Ethernet, 2x USB-C PD charging+ data transfer, 1x USB3.1, 3x USB3.0, 2x USB2.0, 1x 3.5mm Audio/Mic, Simply plug and play to expand your laptop's capabilities.

#### **Structure Diagram**



1. H0M11
2. H0M12
3. USB-A 3.1
4. USB-C Data+PD
5. 3.5mm Audio/Mic
6. RJ45 Ethernet
7. DP
8. USB-A 3.0
9. USB-A 2.0

## Feature

1. HDMI 1 video output:
  - 4Kx2K 60Hz / 3840×2160 (work separately while source is DP1.4)
  - 4Kx2K 30Hz / 3840×2160 (work separately while source is DP1.2)
2. HDMI 2 video output: Up to 4Kx2K 30Hz / 3840×2160 max.
3. USB 3.1-A
 

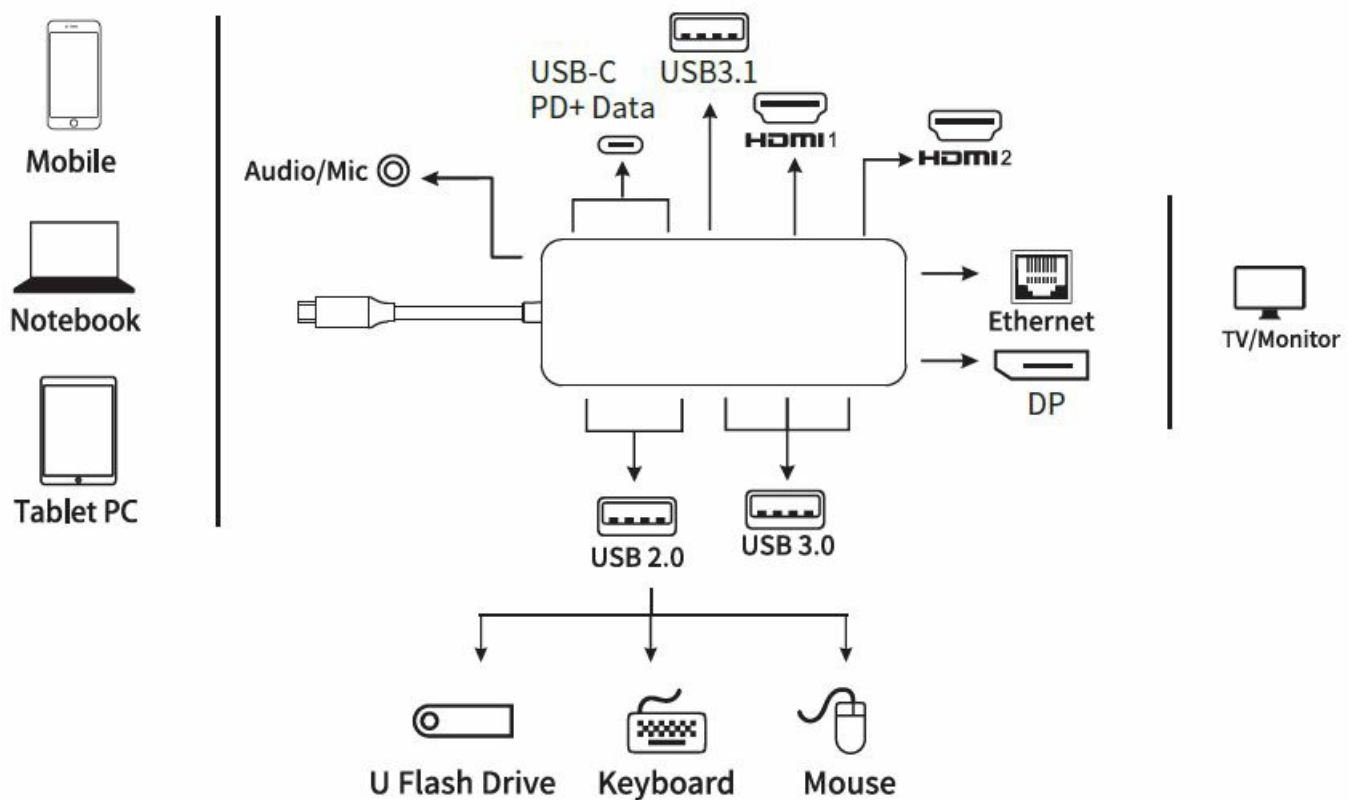
Up to 10Gbps data speed & maximum power output 5V/0.9A, backwards compatible with USB3.0/2.0/USB1.1.
4. USB-C PD + Data Support 100W power in, Up to 10Gbps data speed.

5. 3.5mm Audio & Microphone (CTIA Standard)
6. RJ45 Gigabit Ethernet Up to 1000Mbps, stable wired access for high-speed connectivity.
7. DP: 4K×2K 60Hz / 3840×2160 (work separately while source is DP1.4) 4Kx2K 30Hz / 3840×2160 (work separately while source is DP1.2)
8. 3x USB-A 3.0 Up to 5Gbps data speed & maximum power output 5V/0.9A, backwards compatible with USB2.0/USB1.1,
9. 2x USB-A 2.0 Up to 480Mbps data speed. Design for the connection of 2.4 GHz wireless devices, such as wireless keyboards/mouse adapters etc.

## Remarks

1. This product support SST (Single-Stream Transport) & MST (Multi-Stream Transport).Note: Mac OS does not support MST.
2. The maximum resolution will be 4K@30Hz when Dual or Triple monitors are connected

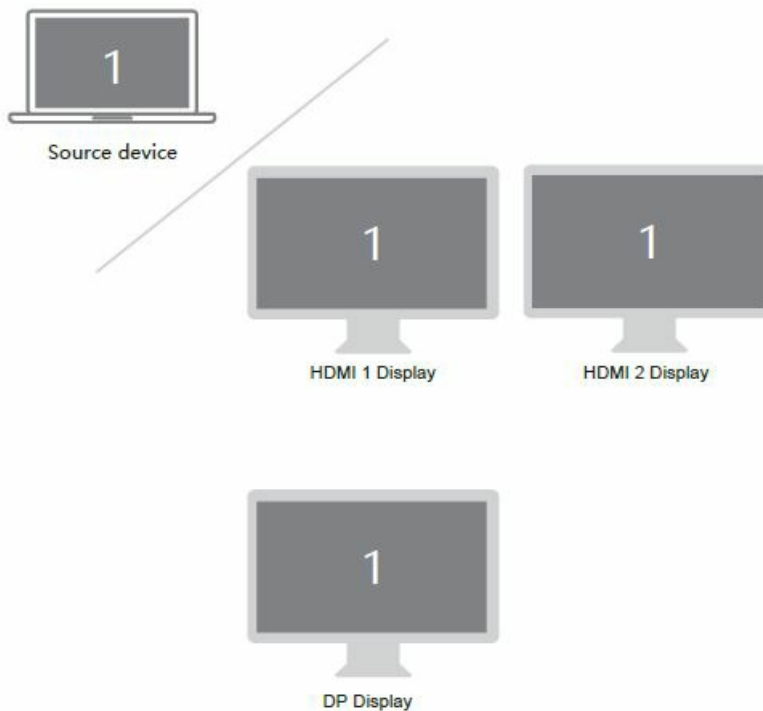
## Connection



## Graphics Settings for Window 10

1. Clone Mode  
Right click desktop > Graphics Settings > Display

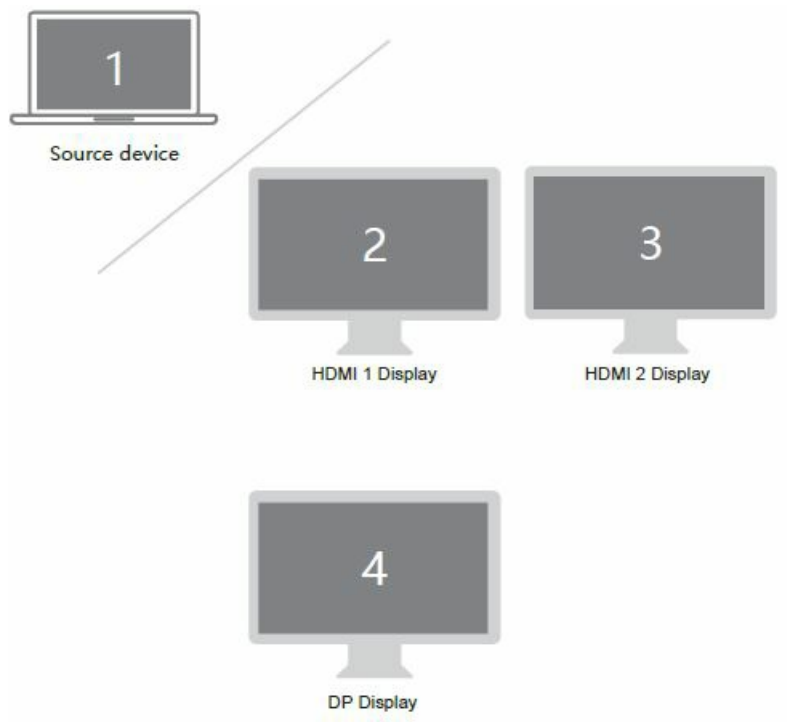
General Settings	Select Display Mode	1 2
Color Settings	Single Display	Detect
Multiple Settings	<input checked="" type="checkbox"/> Clone Display	
Custom Resolutions	Extended Desktop	
DisplayPort Topology	Collage	
	Select One or More Active Displays	
	Built-in Display	▼
	HDMI Display	▼
	DP Display	▼



## 2. Extended Desktop

Right click desktop > Graphics Settings > Display

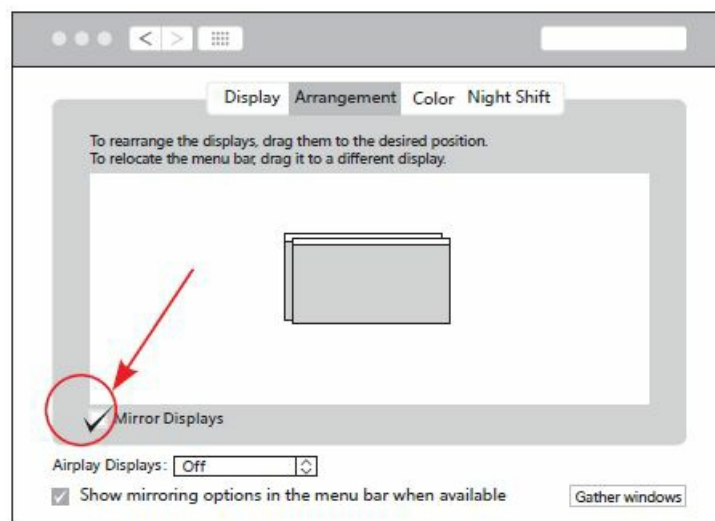
General Settings	Select Display Mode	1 2 3 4
Color Settings	Single Display	Detect
Multiple Settings	<input checked="" type="checkbox"/> Extended Desktop	
Custom Resolutions	Collage	
DisplayPort Topology	Select One or More Active Displays	
	Built-in Display	▼
	HDMI Display	▼
	DP Display	▼

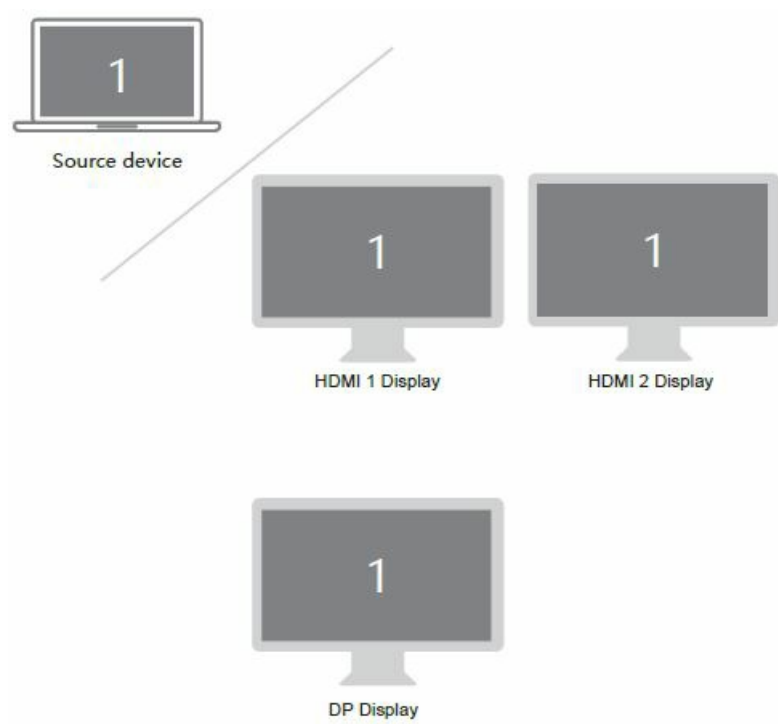


## Graphics Settings for Mac

### 1. Mirror Display

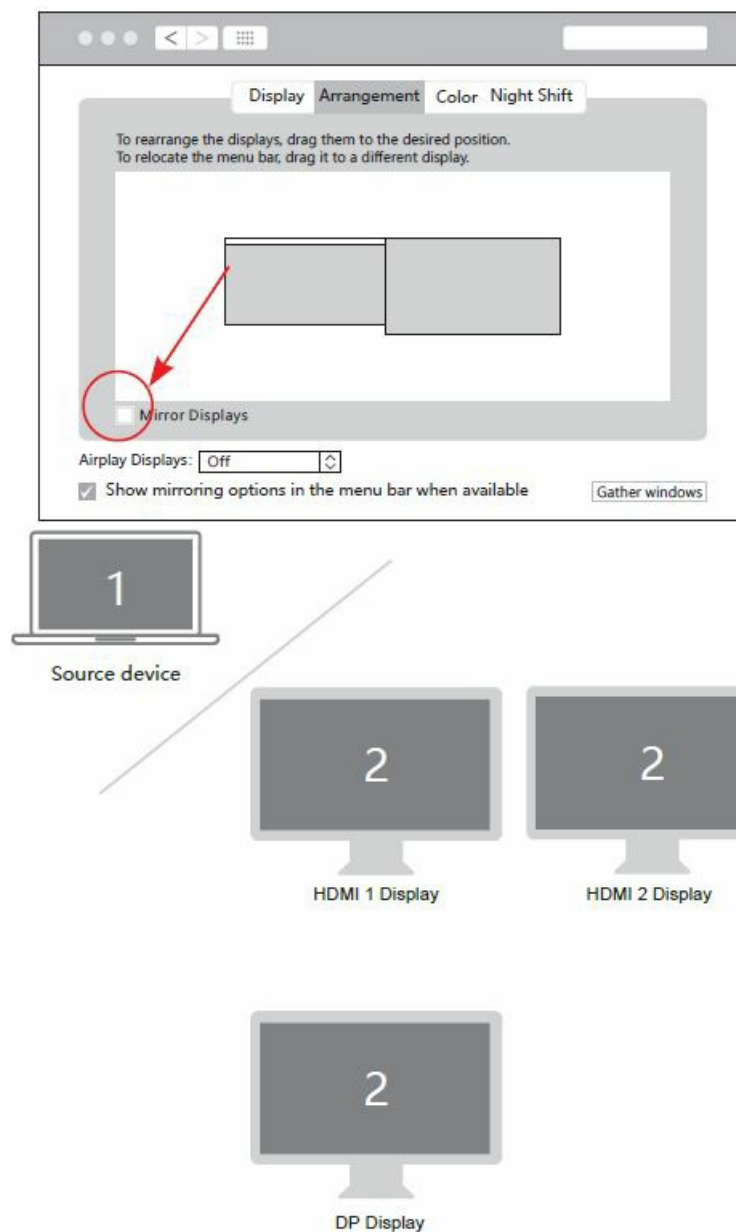
Apple logo > System Preferences > Displays





## 2. Extend Display

Apple logo > System Preferences > Displays



## Storage Conditions

- Environmental Working Temperature: 0 C to 40 C (32°F to 104°F)
- Storage Temperature: -20 C to 85 C (-4°F to 185°F)
- Environmental Working Humidity: 20-90%RH
- Storage Humidity: 5%-95%RH

## FAQ

### A. Why is there no video output?

1. Please make sure the USB-C port of your devices (Laptop/Tablet) support Video Output.
2. Please check if the cable is well connected.
3. Please use the standard HDMI cable.

### Why is there no audio output from HDMI?

1. Please make sure your monitor support Audio output function.
2. Please set the external monitor as default Audio output device.

### What should I do if the display screen drops after connecting a large current HDD/SSD?

Please connect your laptop charger/adaptor to the USB-C PD charging port of product.

### Why does the output not reach 4K 60Hz?


1. Please make sure your monitor support 4K 60Hz.
2. Please make sure the video source is 4K 60Hz.
3. Please make sure to use the 2.0 or higher version HDMI cable.
4. Please make sure your computer specification support DP1.4 signal output.

## HIGH-DEFINITION MULTIMEDIA INTERFACE

The terms HDMI, HDMI High-Definition Multimedia Interface, and the HDMI Logo are trademarks or registered trademarks of HDMI Licensing Administrator, Inc.

---

## Documents / Resources

	<a href="#">LIONWEI LIUC3908 USB C Docking Station</a> [pdf] Instruction Manual LIUC3908, LIUC3908 USB C Docking Station, USB C Docking Station, Docking Station, Station
---	--

## References

- [User Manual](#)

Manuals+.