

Linxup LX Dash Cam with GPS Tracker



Linxup LX Dash Cam with GPS Tracker User Guide

[Home](#) » [linxup](#) » Linxup LX Dash Cam with GPS Tracker User Guide 

Contents

- 1 [Linxup LX Dash Cam with GPS Tracker](#)
- 2 [Product Information](#)
- 3 [Product Usage Instructions](#)
- 4 [Camera-Generated AI Alerts](#)
- 5 [GPS Alert-Generated Videos](#)
- 6 [View Day/Manual Review](#)
- 7 [Additional Features](#)
- 8 [Understanding Camera Status](#)
- 9 [Adjusting Camera Settings In The Portal](#)
- 10 [Documents / Resources](#)
 - 10.1 [References](#)



Linxup LX Dash Cam with GPS Tracker



Product Information

Specifications:

- **Camera-Generated Videos:** OK Presto, Potential Impact, Broken Glass, and Movement
- **GPS Alert-Generated Videos:** Pair 20-second video clips to standard GPS tracker alerts
- **View Day/Manual Review:** Records 45 hours continuously (66 hours with the driver-facing camera off) when the ignition is on
- **Additional Features:** Live View Snap Shot, Guard Mode Camera Notifications, 1 Camera-Generated AI Alerts

Product Usage Instructions

Camera-Generated AI Alerts:

To access these videos:

1. Navigate to the main Map page and select the appropriate tracker.
2. Select the Videos button.
3. Find the video clip in the right-hand rail using Date Range or Alert criteria.
4. A popup box on the map will display the Inside thumbnail, Outside thumbnail, or Street View. Select whether you would like to Play or Save the Inside or Outside view.
 - Play = Stream the clip from the cloud
 - Save = Download to your computer

GPS Alert-Generated Videos:

To access these videos:

1. Navigate to the main Map page and select the appropriate tracker.
2. Select the Alerts button to view all available alerts and filter by Date Range.
3. Click "Check for On-Camera Video" found at the bottom of the Alerts rail.
4. The camera will load all stored video attached to the GPS alerts occurring within the last 45 hours of drive time.
5. A popup box on the map will display each clip's Inside thumbnail, Outside thumbnail, or Street View. Select whether you would like to Stream or Add.
 - Stream = Stream the clip from the camera
 - Add = Save a clip to your video library, which can be accessed later by clicking the Videos button

View Day/Manual Review:

To access View Day:

1. Navigate to your main Map page and select the appropriate tracker.
2. Select the Alerts button to view all available alerts.
3. Click "Check for On-Camera Video" found at the bottom of the Alerts rail.

FAQ:

- **Q: How long does the Dash Cam record?**

The Dash Cam records continuously for up to 45 hours (66 hours with the driver-facing camera off) when the ignition is on.

- **Q: How do I access Camera-Generated AI Alerts?**

To access Camera-Generated AI Alerts, navigate to the main Map page, select the appropriate tracker, click on the Videos button, and find the desired video clip in the right-hand rail.

- **Q: How do I access GPS Alert-Generated Videos?**

To access GPS Alert-Generated Videos, navigate to the main Map page, select the appropriate tracker, click on the Alerts button, and check for On-Camera Video at the bottom of the Alerts rail.

- **Q: How long are videos saved in the video library?**

Videos saved in the video library are available for 60 days.

If you need help or have any questions, contact us at 1-877-732-4980 or visit www.linuxup.com/help.

linuxup Dash Camera User Guide

Welcome to your new Linuxup Dashcam! We are so excited you chose Linuxup for your video needs and look forward to allowing you to get an in-depth look at the activities happening within the cab of your vehicles and out on the road.

This guide includes: Understanding Camera-Generated and GPS Alert-Generated Videos

- **Camera-Generated Videos:** OK Presto, Potential Impact, Broken Glass and Movement
- **GPS Alert-Generated Videos:** Pair 20-second video clips to your standard GPS tracker alerts such as

speeding, entering or exiting geofences, etc

- **View Day/Manual Review:** Your Linxup Dash Cam records 45 hours continuously (66 hours with the driver-facing camera off) when the ignition is on

Additional Features:

- Live View
- Snap Shot
- Guard Mode
- Camera Notifications

Camera-Generated AI Alerts

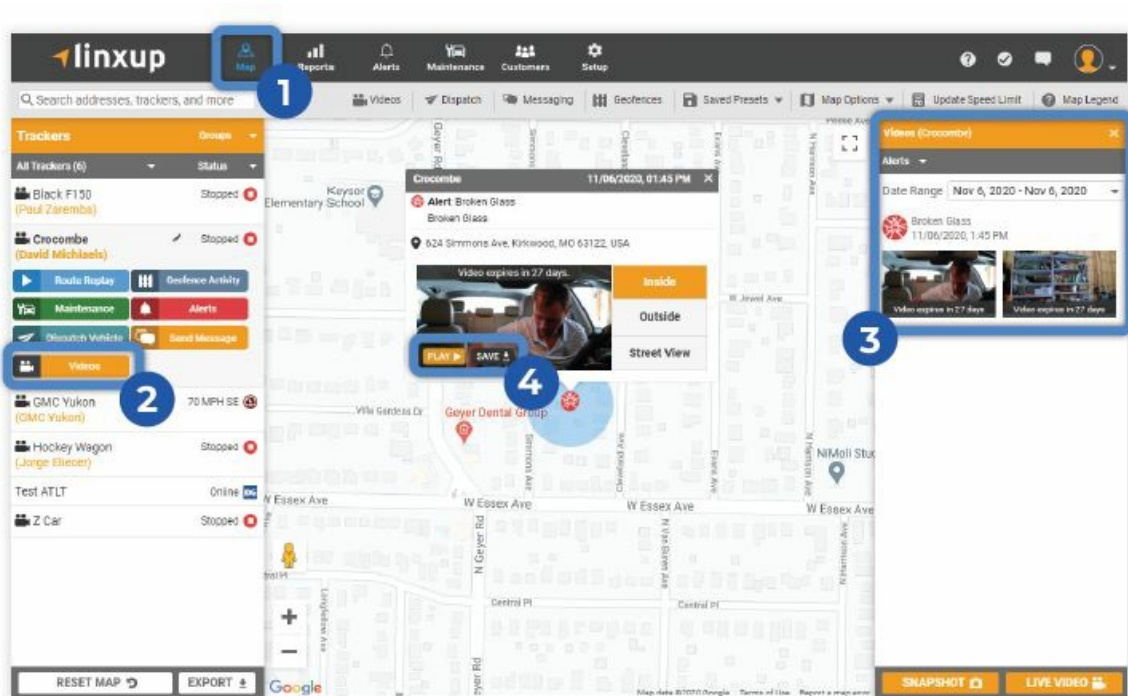
These events are triggered using either the camera's accelerometer or audio detection capability. The following events will automatically generate a 20-second video clip, stored in the cloud and made available via your customer portal's Videos rail. The videos associated with these events are stored for 60 days and will be available to download to your device during that time.

- Broken Glass (Loud sound of a particular frequency)
- Potential Impact
- Movement
- **Voice-Activated Custom Videos (Sound)**

These are generated by saying "OK Presto". Once "OK Presto" is said, the camera will pull footage from 10 seconds before the command and 10 seconds after to create a custom video clip. You can also say another phrase after OK Presto is initiated to name the video. The name of the video can be changed in the portal as well.

To access these videos:

1. Navigate to the main Map page and select the appropriate tracker.
2. Select the "Videos" button.
3. Find a video clip in the right-hand rail using Date Range or Alert criteria.
4. A popup box on the map will display the Inside thumbnail, Outside thumbnail, or Street View. Select whether you would like to Play or Save the Inside or Outside view.
 - Play = Stream the clip from the cloud
 - Save = Download to your computer



GPS Alert-Generated Videos

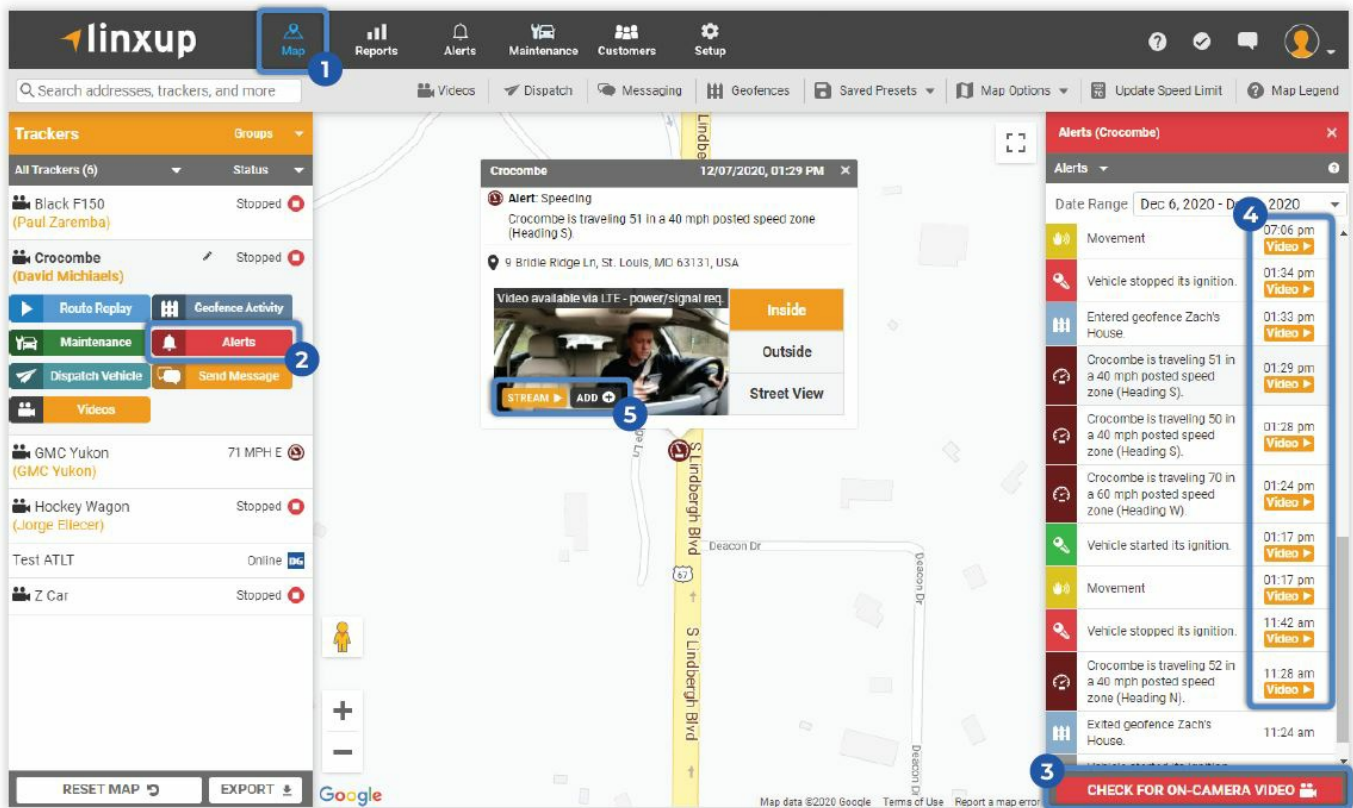
- Our solution ties video clips to every GPS alert generated within your Customer Portal.
- You may access GPS-related video for up to 45 hours of drive time if the driver-facing camera is ON and up to 66 hours if the driver-facing camera is OFF.
- If you need to save the video for later viewing, click “Add” to save the clip to your Videos Library.

To access these videos:

1. Navigate to the main Map page and select the appropriate tracker.
2. Select the “Alerts” button to view all available alerts and filter by Date Range.
3. Click “Check for On-Camera Video” found at the bottom of the Alerts rail.
4. The camera will now load all stored video attached to the GPS alerts occurring within the last 45 hours of drive time.
5. A popup box on the map will display each clip’s Inside thumbnail, Outside thumbnail, or Street View. Select whether you would like to Stream or Add.
 - Stream = Stream the clip from the camera
 - Add = Save a clip to your video library, which can be accessed later by clicking the Videos button Videos saved in your video library are available for 60 days

REMINDER:

You must add the clip to your Video Library to save it for later viewing.



View Day/Manual Review

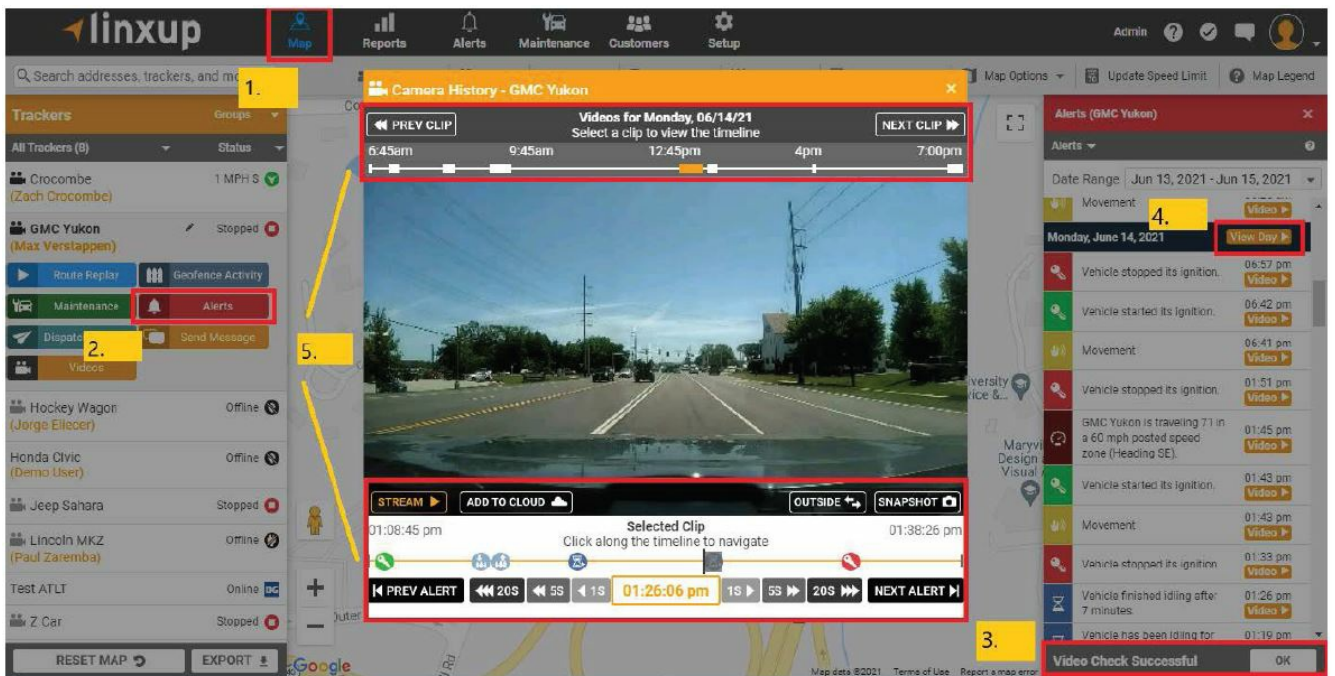
Another way to view your Camera-generated or GPS Alert-generated videos is by using “View Day”. This feature lets you view your videos on a timeline and more easily find footage between Camera-generated or GPS Alert-generated videos.

To access View Day:

1. Navigate to your main Map page and select the appropriate tracker.
 2. Select the “Alerts” button to view all available alerts.
 3. Click “Check for On-Camera Video” found at the bottom of the Alerts rail. You’ll be prompted once the video check is successful.
 4. The camera will now load all stored video attached to the GPS alerts including “View Day”.
 - The View Day icon can be found next to each date in the Alerts rail
 5. Click “View Day” for the day you’d like to view. A popup box will display an upper and lower rail.

The upper rail indicates times for which the ignition of the vehicle was on and thus recording video. The lower rail will outline available video clips during the ignition-on time interval. You can toggle between Inside and Outside views.

 - Use “Prev Clip” and “Next Clip” on the top rail to step through the selected ignition-on time interval.
 - Use the bottom rail to click on particular alert videos and/or select times in between these alerts. You can also step through video footage in 1, 5 or 20-second intervals.
- **Stream** = Stream the clip from the camera
 - **Add to Cloud** = Save a clip to your video library, which can be accessed by clicking the Videos button. Videos saved in your video library are available for 60 days
 - **Snapshot** = Downloads a snapshot of the clip to your device



Additional Features

LIVE VIEW:

Live View gives you the ability to stream a minute of real-time video straight from the camera. This is live footage and is NOT stored on the camera or in the cloud.

NOTE:

In-cab audio is OFF by default. You can enable in-cab audio for your entire fleet of cameras by request.

To access Live View:

1. Navigate to your main Map page and select the appropriate tracker.
2. Select the "Videos" button.
3. Select "Live Video".
4. A popup will display the live video and you will see a timer for 1 minute. You can toggle between Inside and Outside views.

- **Camera Icon** = Download a snapshot of the Live Video to your computer

NOTE:

Live view is cellular network dependent and requires a strong cellular signal where the camera is located.



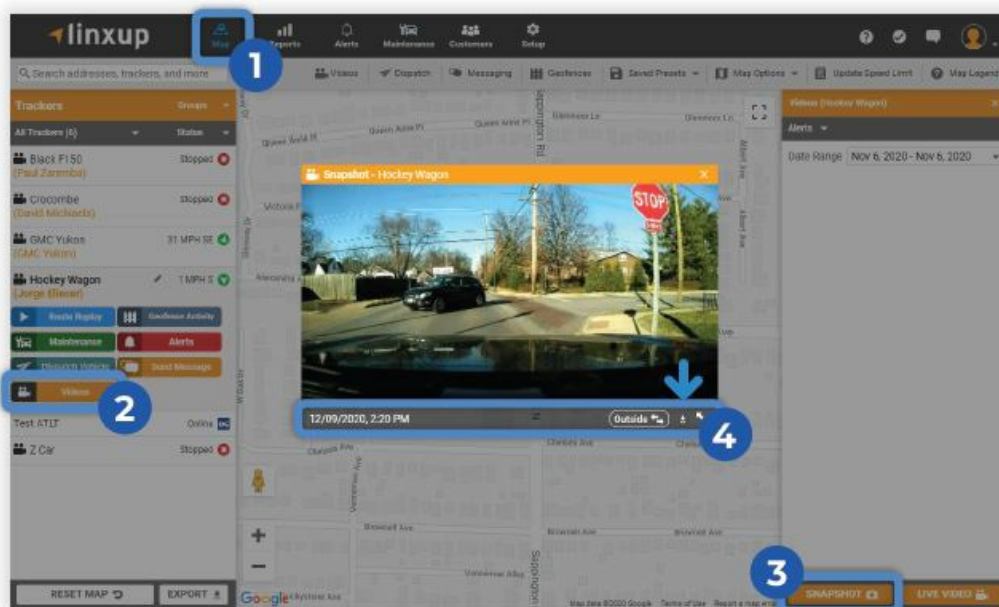
SNAPSHOT:

Snapshot allows you to pull a quick image of the last time the camera connected to the servers.

To access Snapshot:

1. Navigate to your main Map page and select the appropriate tracker.
2. Select the “Videos” button.
3. Select “Snapshot”.
4. A popup will display the last available image. You can toggle between the Inside and Outside views.

File Download Arrow = Download the snapshot to your computer



GUARD MODE:

Guard Mode is included as a feature on your camera and allows for 24/7 protection of your vehicle. The camera captures and records events 24/7, even when the ignition is off. After 5 minutes of the ignition being off, the camera enters Guard Mode and a green light on the back of the camera will blink. Two events trigger the camera to “wake up” from Guard Mode and capture video:

- **Broken Glass Alert:** If a loud noise at or above a certain frequency is detected, a Broken Glass Alert will be

generated. The two LED lights on the front of the camera will illuminate the interior of the vehicle and a video will automatically be uploaded to your Videos library.

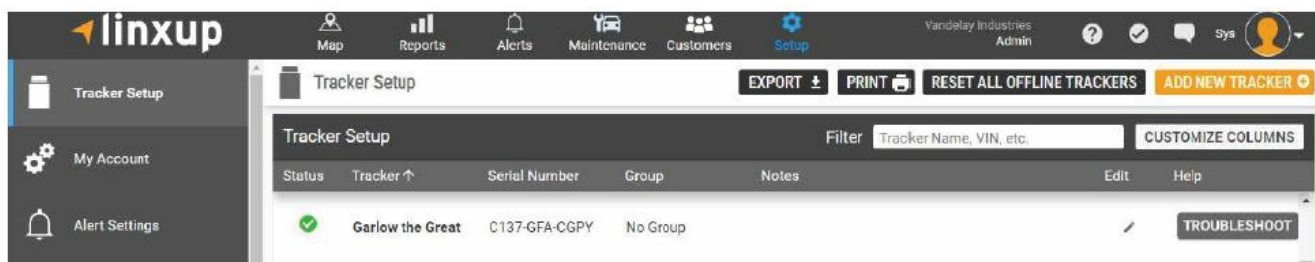
- **Movement Alert:** If Movement is detected in or around the vehicle, a video is captured and added to your Alerts. You can pair this alert with an on-camera video using “Check for On-Camera Video” in your Alerts rail.

CAMERA NOTIFICATIONS:

In addition to a multitude of GPS-generated notifications, our solution offers the ability to set notifications for Camera-specific alerts as well.

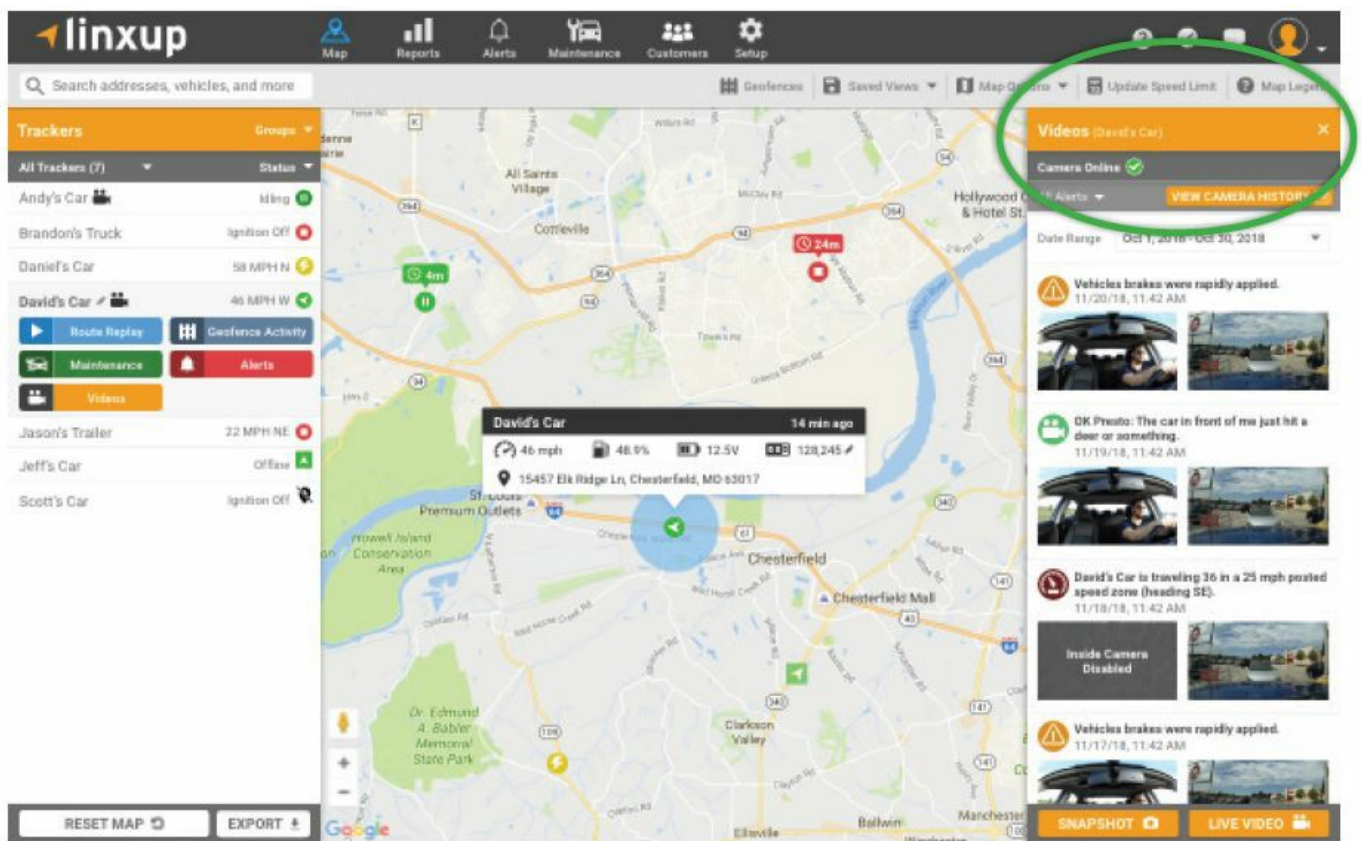
To set Camera Notifications:

1. Navigate to Setup.
2. Click General Notifications in the left-hand menu.
3. Click Add Notification.
4. Fill out all Notification details and options:
 - Name Notification
 - Trackers, Drivers, or Groups to Monitor
 - Alert Types: Select the Camera Preset to engage all camera-related alerts for your vehicle or select from the Available Alerts list
 - Alert Delivery
5. Click Save.



Understanding Camera Status

The Online/Offline status of your Linxup Dashcam can be found at the top of your Alerts or Videos rail.



8 STATUSES HELP YOU UNDERSTAND THE CURRENT STATE OF YOUR CAMERA:

1. **ONLINE** – Camera is powered on and functioning properly
2. **OVERHEATED** – Excessive heat has caused the camera to power down
3. **UPDATING** – The camera is currently updating and should be Online after the update
4. **RESTARTING** – The camera is restarting and should be Online after the restart
5. **UNPLUGGED** – The camera has lost power due to it being unplugged
6. **LOW BATTERY** – The battery voltage of the vehicle isn't sufficient to power the camera
7. **UNKNOWN** – The camera is offline and the system is unable to determine the reason. Try resetting the device and contact Support if unsuccessful
8. **ERROR CHECKING CAMERA STATUS** – Communication with the device is failing. This is most often due to poor cellular connection or a busy network. Please try again and contact Support if unsuccessful.

Adjusting Camera Settings In The Portal

The settings for your Linxup Dashcam can be controlled from "Setup>Cameras" and you can also restrict drivers or anyone in the vehicle from modifying those settings on the camera.

To modify a camera's settings, click the "pencil icon" under "Edit for the Tracker/Camera."

From here, you can Enable or Disable Camera Beeps, Driver-facing Display and Inside Camera recording. If you want to restrict drivers from changing these settings from the camera, turn OFF that setting.

Camera Settings - C137-GFA-CDQH

Assigned Tracker

No Attached Tracker

Camera Beeps

Display

Inside Camera

Allow Driver to Edit These Settings

CANCEL

SAVE

You can change settings for ALL cameras in your fleet by selecting "Update All Camera Settings."

Update All Camera Settings

Warning: This will override camera settings for all cameras.

Camera Beeps

OFFUNCHANGEDON

Display

OFFUNCHANGEDON

Inside Camera

OFFUNCHANGEDON

Allow Drivers to Edit These Settings

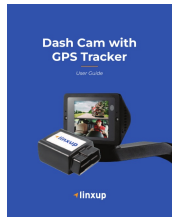
OFFUNCHANGEDON

CANCEL

SAVE

If you need help or have any questions, contact us at 1-877-732-4980 or visit www.linuxup.com/help.

Documents / Resources



[Linxup LX Dash Cam with GPS Tracker](#) [pdf] User Guide

LX Dash Cam with GPS Tracker, LX, Dash Cam with GPS Tracker, Cam with GPS Tracker, GPS Tracker, Tracker

References

- [📌 Linxup Help Center](#)
- [User Manual](#)

[Manuals+](#), [Privacy Policy](#)

This website is an independent publication and is neither affiliated with nor endorsed by any of the trademark owners. The "Bluetooth®" word mark and logos are registered trademarks owned by Bluetooth SIG, Inc. The "Wi-Fi®" word mark and logos are registered trademarks owned by the Wi-Fi Alliance. Any use of these marks on this website does not imply any affiliation with or endorsement.