



LINQ D2 InstantView Multiport Hub User Guide

[Home](#) » [LINQ](#) » LINQ D2 InstantView Multiport Hub User Guide 

LINQ

D2 InstantView Multiport Hub
User Guide



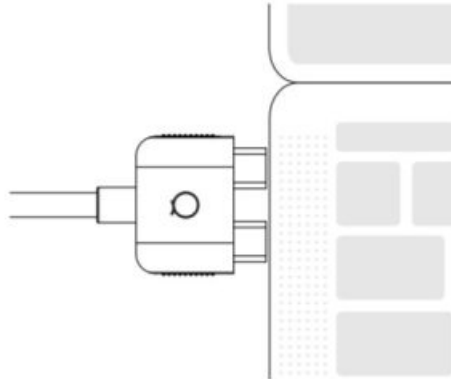


<https://qrco.de/bcChfS>

InstantView Management App from the LINQ website

<https://lingbyelements.dk/d2instantview-download.html>

2. Connect the D2 Hub in to your Laptop



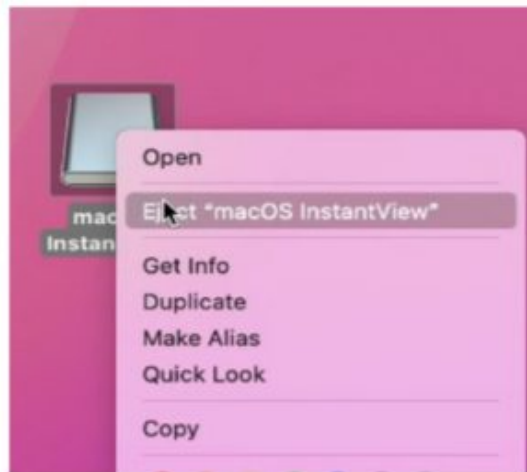
3. Double click the downloaded Installer file



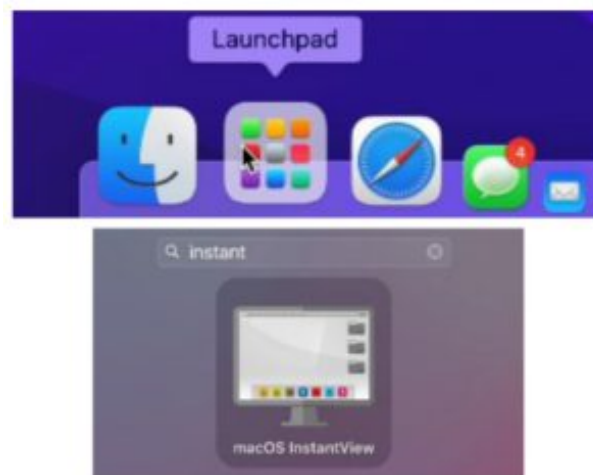
4. Drag the InstantView App into the Applications folder



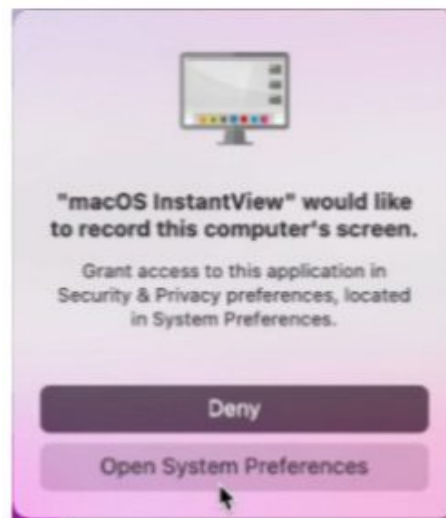
5. Close the window and eject the mounted installation drive.



6. Use Launchpad to start InstantView.

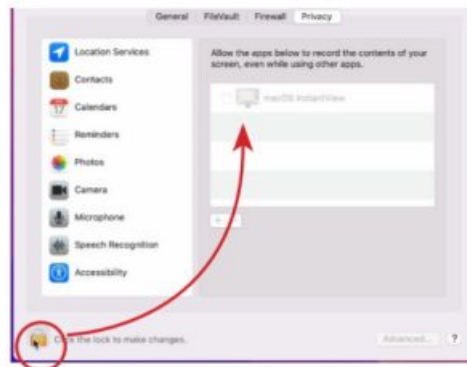


7. When opened for the first time InstantView will ask permission for Recording the Screen.



NOTE: This is needed to give access to the pixels needed to render the mirrored display which is being sent from HDMI 2.

1. To give permission for the first time, go to System Preferences > Security & Privacy.



Unlock by clicking the Lock icon on the lower left to make changes and then tick the box besides macOS InstantView

2. Upon giving InstantView permission, you will get a pop-up. Select Quit & Reopen.



8. Connect the screen to HDMI 2. the InstantView Management screen will pop up for the first time.

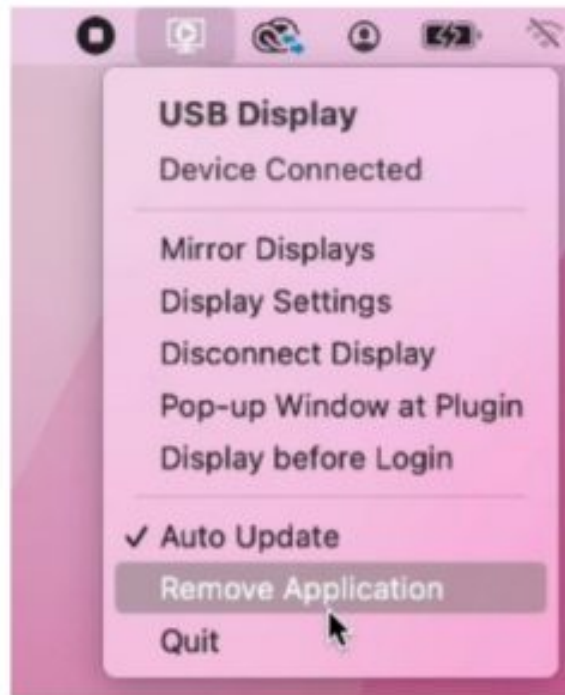


Contents

- [1 Uninstallation Guide:](#)
- [2 Documents / Resources](#)
- [3 Related Posts](#)

Uninstallation Guide:

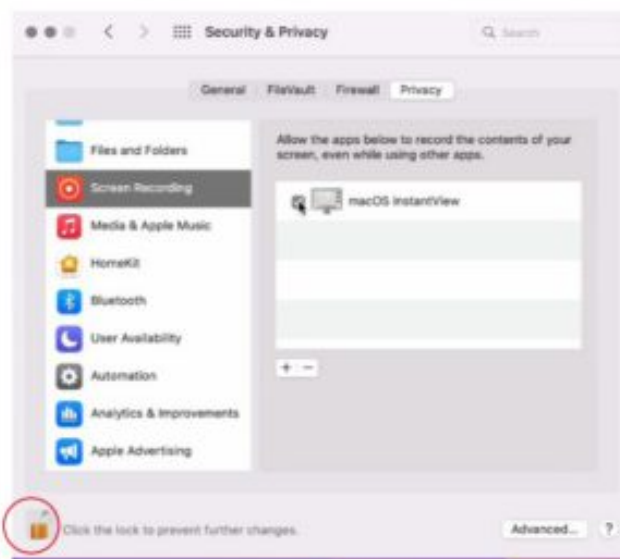
1. Right-click the InstantView icon in the menu bar, and select remove Application.



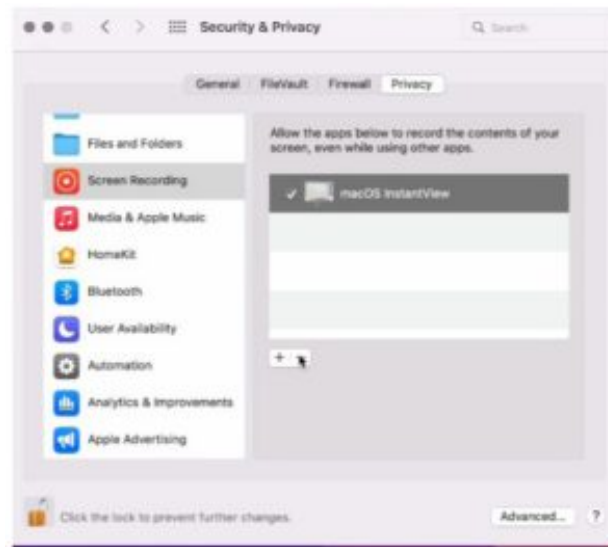
2. Open Finder and go to Applications. Search for macOS InstantView and Move to Bin.



3. Go to System Preferences > Privacy & Security > Screen Recording and unlock to allow changes



4. Once unlocked, you will be able to make changes. Select InstantView then click – to remove

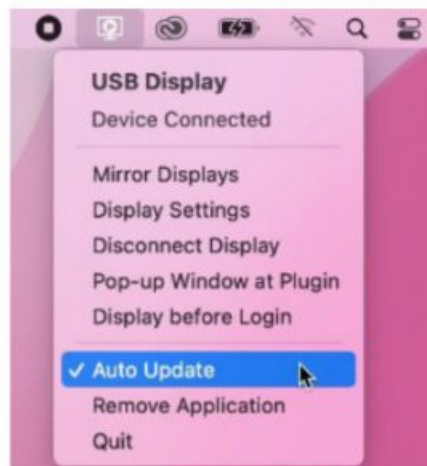


InstantView has now completely been removed from macOS

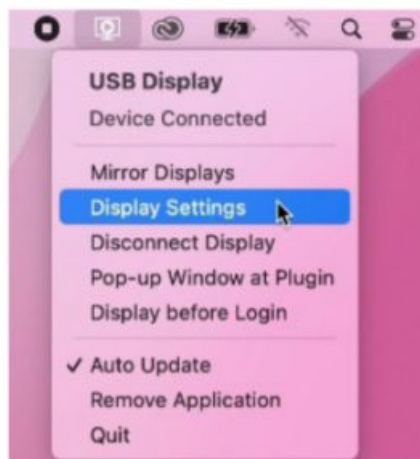
Tips:

NOTE: To access the Context Menu, Right-click on the InstantView icon on the top-right menu The screen scaling of your MacBook changes whenever you plug your dual screen, it is completely normal. You can change the stop this from happening by readjusting the screen scaling upon activating your dual screen.

1. We Recommend having the Auto-update checked to automatically keep your InstantView Software Updated



2. Display Settings is where you can adjust your settings, all settings adjusted here will be saved.



3. Mirror Displays: Click here to change mode between Mirror Display or Extended Display.



Troubleshooting

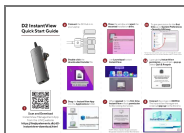
if you experience any issues or have any questions regarding the product, please visit the support and FAQ page on our website for the most up-to-date information.

LINQ | Support

<https://linqbyelements.dk/support.html>

visit: www.LINQbyELEMENTS.dk

Documents / Resources



[LINQ D2 InstantView Multiport Hub](#) [pdf] User Guide
D2, InstantView, Multiport Hub, D2 InstantView Multiport Hub

[Manuals+.](#)