

linptech K4 Self-Powered Wireless Switch User Manual

[Home](#) » [linptech](#) » linptech K4 Self-Powered Wireless Switch User Manual 



Self-powered Wireless Switch User's Manual V1.1



K4 is a wireless radio transmitter without being connected with any control circuit or battery, which plays its role by matching with wireless receiver. It can control the receiver, therefore it can remote-control the load (lights, fan, etc.) connected with the receiver. The innovative self-powered technology is used on K4 self-powered wireless switch, which can harvest the energy caused by the finger's pressing to send the radio signal. Therefore, the battery is not required, which can avoid the trouble of changing battery and protect the environment.

Contents

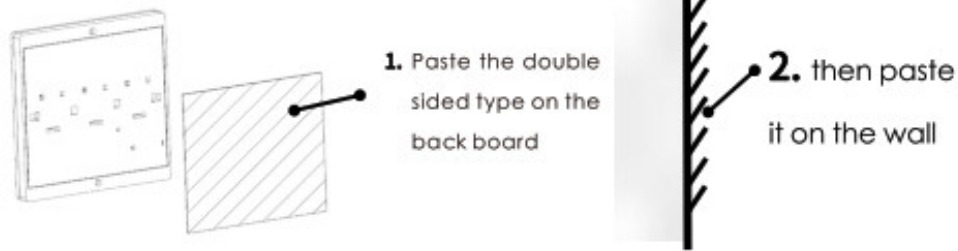
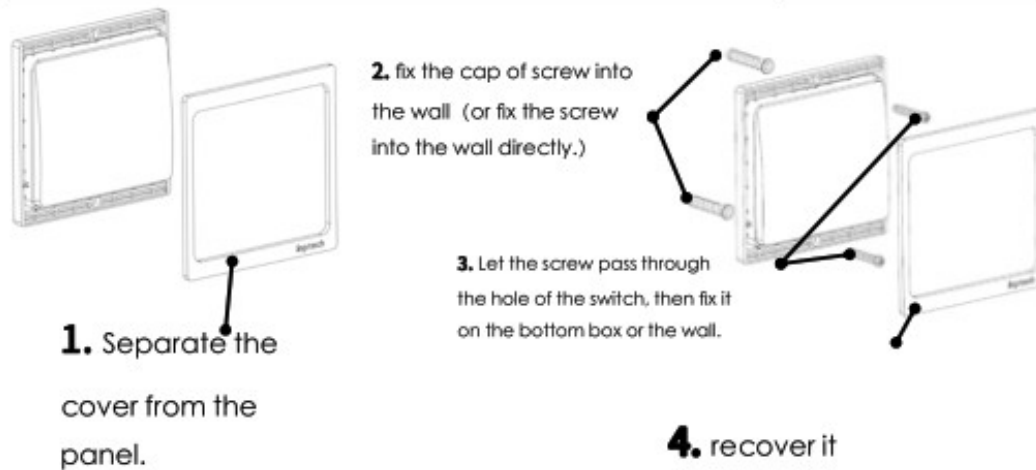
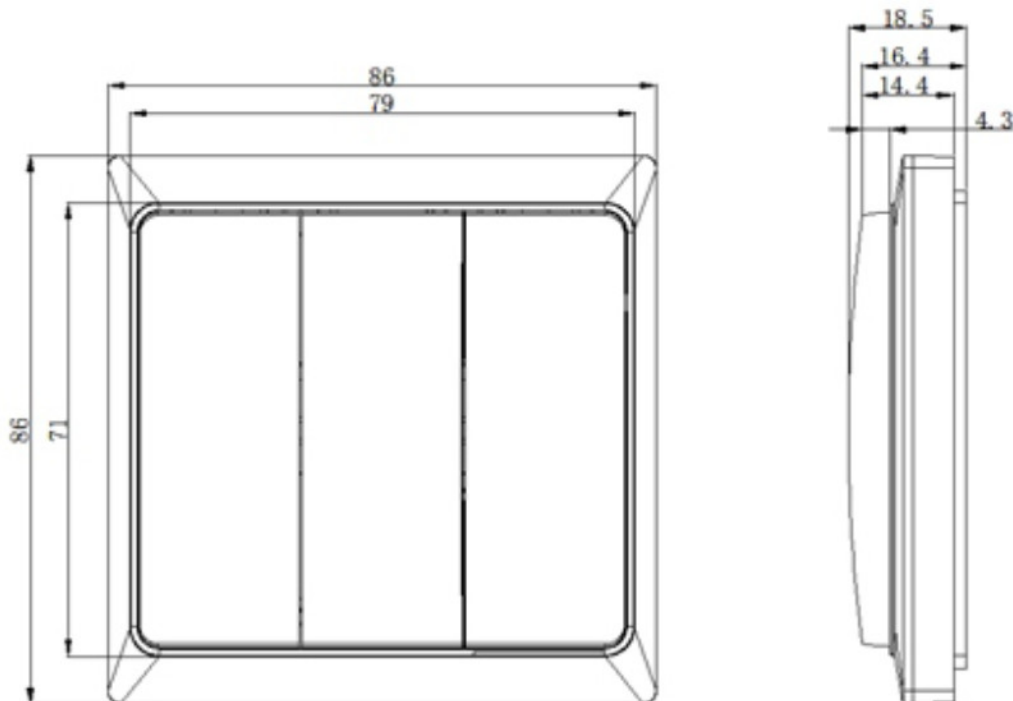
- [1 Technical Data](#)
- [2 How to mount?](#)
- [3 Dimension](#)
- [4 Code](#)
- [5 Warranty Card](#)
- [6 Warning](#)
- [7 Documents / Resources](#)
- [8 Related Posts](#)

Technical Data

Power supply	Self-powered (without extra power)
Key type	on/off & toggle
Moving distance	2mm
Strength	220g
Life span	>200000 times
Radio frequency	433M
Covering range	Outdoor 80 m; Indoor 30m; The signal can go through walls, doors and glass.
Ambient conditions	Temperature: -20t/ 60t ;Humidity: 0 % RH/ 75% RH ; No condensation
Storing temperature	Temperature: -25t/70°C; Humidity: 0 % RH/ 75% RH ; No condensation
Installation	Double sided tape or Screw
Enclosure	Fireproofing PC
weight	60g

How to mount?

Please follow the advice of mounting : (Don't mount it on the metal things to avoid affecting the transmitting of signals)

Way 1**With double sided type****Way 2****With screws****Dimension****Code**

The self-powered wireless switch can be code with the receiver to realize the flexible combination of switch and the receiver. Therefore, it is easy to realize one switch to control several receivers or several switches to control one receiver. At the same time, it can code with the receiver that can receive the signal from the switch to realize some special function.

If it is coded with receiver, please find the relative information in User's Manual of receiver.
It is coded with other manufacture's receiver, please find the relative information in its User's Manual of receiver.

Warranty Card

Customer Information	Name		Tel	
	Add			
Product type		Warranty term	2years	
Fault reason				
Purchase time				
<p>1. The free warranty time of the product is 2 years, and you can get maintenance upon your own payment after 2 years.</p> <p>2. If maintenance is needed, please supply us with effective selling list and complete warranty card.</p> <p>3. If the faulty is caused by wrong operation or other wrong maintenance, the warranty is not supplied.</p> <p>4. The product is out warranty range if it is opened, reinstalled or maintained without our authority.</p>				

Warning


This device complies with Part 15 of the FCC Rules. Operation is subject to the following two conditions:

1. This device may not cause harmful interference, and
 2. This device must accept any interference received, including interference that may cause undesired operation.
- Attention that changes or modification not expressly approved by the party responsible for compliance could void the user's authority to operate the equipment.

Note: This product has been tested and found to comply with the limits for a Class 6 digital device, pursuant to Part 15 of the FCC rules. These limits are designed to provide reasonable protection against harmful interference in a residential installation. This product generates, uses, and can radiate radio frequency energy and, if not installed and used in accordance with the instructions, may cause harmful interference to radio communications. However, there is no guarantee that interference will not occur in a particular installation. If this product does cause harmful interference to radio or television reception, which can be determined by turning the equipment off and on, the user is encouraged to try to correct the interference by one or more of the following measures:

- Reorient or relocate the receiving antenna.
- Increase the separation between the equipment and receiver.
- Connect the equipment into an outlet on a circuit different from that to which the receiver is connected.
- Consult the dealer or an experienced radio/TV technician for help.

Documents / Resources

	linptech K4 Self-Powered Wireless Switch [pdf] User Manual K4R, 2ACZU-K4R, 2ACZUK4R, K4 Self-Powered Wireless Switch, K4, Self-Powered Wireless Switch
---	---