



LINORTEK Ultra 300 Ethernet I/O Controller User Guide

[Home](#) » [LINORTEK](#) » LINORTEK Ultra 300 Ethernet I/O Controller User Guide 



Contents

- [1 Ultra 300 Ethernet I/O Controller](#)
- [2 Accessing the SERVER](#)
- [3 Connecting your SERVER directly to Your PC](#)
- [4 Set Time Zone](#)
- [5 Documents / Resources](#)
 - [5.1 References](#)

Ultra 300 Ethernet I/O Controller

Thank you for purchasing Lenore Ethernet I/O controller. All of our controllers come complete with all parts and software necessary for installation, operation and ability to control the devices attached to it. Upon arrival, please inspect the contents of the box to ensure that your kit is complete and contains all necessary components. The product manual, as well as software updates, are available for download.

<https://www.linortek.com/downloads/documentations/>

Accessing the SERVER

Once your SERVER is powered on and connected to the network, it will automatically obtain an IP address via DHCP as long as your router is configured to do so. To connect, enter the IP address into your web browser. This will take you to your SERVER's landing page. To log in, click the Log In button on the top right of the page. Your browser will prompt you to enter your username and password. By default, these credentials are both set to admin. To find your Ultra's IP address, see below.

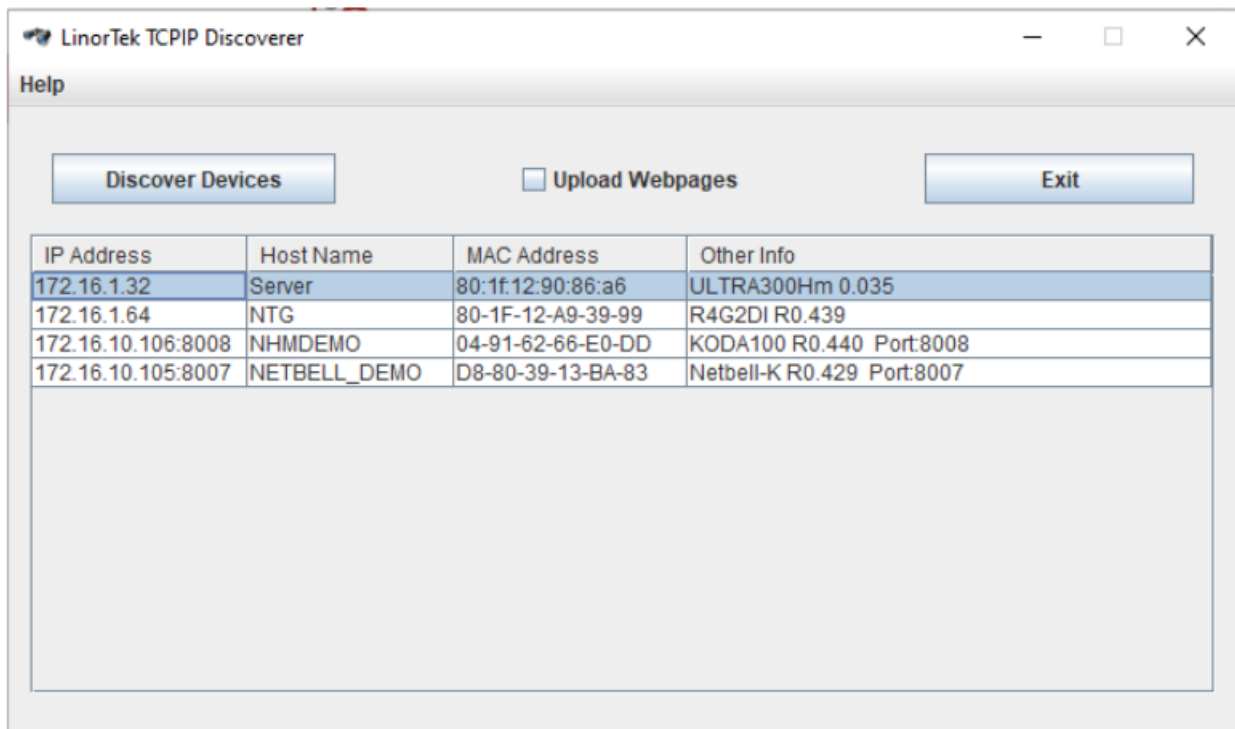
Finding your IP Address with Lenore Discoverer

The Discoverer program will automatically locate your SERVER. The Discoverer is a Java program, and requires Java Runtime to be installed to use this feature. Java can be found here: <http://java.com/en/download/index.jsp>.

To download the Discover program, please go to: <https://www.linortek.com/downloads/support-programming/> Use of Chrome & Firefox browsers is recommended. Please note: If you prefer to use Internet Explorer, Internet Explorer saves Lenore Discoverer as a Zip file by default. In order to use the Discoverer, you will need to select Save as and rename the file as Lenore Discoverer.jar when you download.

When downloading the Discover program, sometimes you will see a popup warning message depending on your browser security settings, asking if you want to keep or discard this file, please click the Keep button as this is a Java program, it won't harm your computer.

Once Discoverer locates your device, it will display:



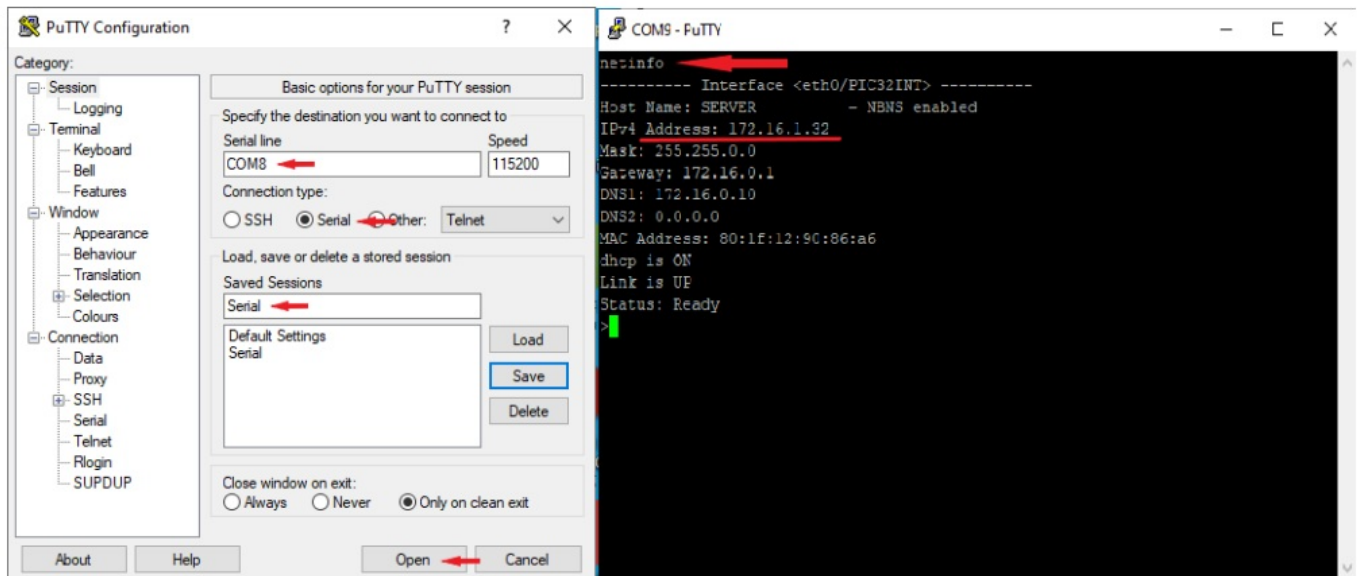
- IP Address
- Host Name
- MAC Address
- Other Info:
 - a) Blue LED (if it's ON)
 - b) Product name
 - c) Server Software Revision
 - d) Port Number (If ported)

Click the device you want to use shown on the Discoverer program to launch the SERVER's web pages in your browser.

Click the Login button on the homepage. Default username/password is: admin/admin. You may change these as you desire or disable this feature in the settings menu.

Finding the IP address by connecting to USB port on Your PC

If there is no way to run The Discoverer app you can find the SERVER's IP address using any terminal emulator. Connect your SERVER to the USB port on your PC using Device's 'POWER' input. Open any terminal emulator you prefer and set your COM port to Serial (You can find your COM port number under Device Manager), open the window and type nitinol command. You will get your Ultra's IP address.



Connecting your SERVER directly to Your PC

You can also plug your SERVER directly to your PC in the case there is no network connection available. If you plug your SERVER to your PC's Ethernet port it will use the default IP address: 169.254.1.1 unless you have previously configured your SERVER to use a static IP. Enter 169.254.1.1 into your web browser to connect. No internet connection required.

Once configured, you can then install your Ultra 300 where desired.

Set Time Zone

Before starting programming your Ultra 300 SERVER, please make sure to set your Time Zone first. CAUTION: Incorrect Time Zone may cause the incorrect time for your SERVER.

To set your Time Zone, go to Setting – Time/Date page, enter your local Time Zone (for example, -5 for Eastern Time Zone, -6 for Central Time Zone, -7 for Mountain Time Zone), make sure the Use NTP Update box is checked, when this box is checked, the Ultra 300 will update its time from the NTP server every 30 minutes by default.

If you use Daylight Savings Time in your area, make sure the Use Daylight Savings Time box is checked, set the DST starts/ends time. If you want to see the time update instantly, you can manually enter the standard time on the Time box (one hour BEHIND your current time), otherwise the time will update to your local time in the next NTP update interval.

For example, if your current time is 9:35am, you should put 8:35am on the Time box.

Click SAVE button, you are now ready to program your Ultra 300 SERVER.

For more information on how to setup and use your SERVER, please download the product manual on our website Download page: <https://www.linortek.com/downloads/documentations/>

Video Tutorials are also available here: www.linortek.com/downloads/

CONTACT SUPPORT TEAM

If you need assistance on setting your devices, please feel free to contact us: Phone: 13364856199

Email: support@linortek.com

You can also start a chat from our website to reach our support teams.


Liner Technology, Inc. Information
subject to change without notice.

www.linortek.com

102023 R001V001

Printed in U.S.A.

Documents / Resources

	<p>LINORTEK Ultra 300 Ethernet I/O Controller [pdf] User Guide</p> <p>Ultra 300 Ethernet I O Controller, Ultra 300, Ethernet I O Controller, I O Controller, Controller</p>
---	---

References

-  [Linortek - Remote Control Monitoring Solutions](#)
-  [Linortek - Remote Control Monitoring Solutions](#)
-  [Downloads/Resources](#)
-  [Documentations](#)
-  [Linortek Products Support Programming Resources](#)
- [User Manual](#)