



Linktop IOT LT-TWL Leather Cord Lamp Remote Control User Guide

[Home](#) » [Linktop IOT](#) » Linktop IOT LT-TWL Leather Cord Lamp Remote Control User Guide 

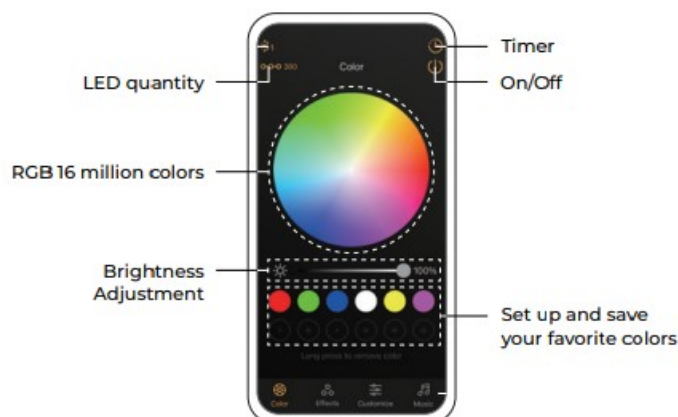
LINKTOP

LT-TWL Leather Cord Lamp Remote Control User Guide

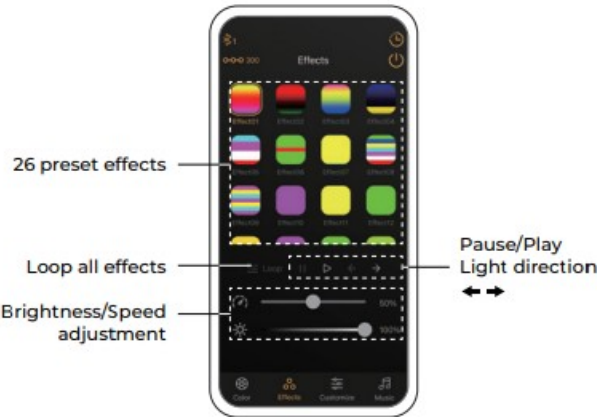
Contents

- 1 [Color Selection](#)
- 2 [App Download](#)
- 3 [FQA](#)
- 4 [Documents / Resources](#)
 - 4.1 [References](#)
- 5 [Related Posts](#)

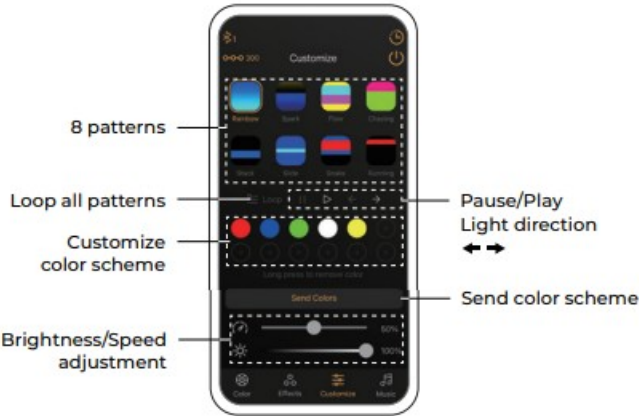
Color Selection



Play Preset Effects



Customize



Music Mode



Timer



FCC Statement

This device complies with part 15 of the FCC Rules. Operation is subject to the following two conditions: (1) This device may not cause harmful interference, and (2) this device must accept any interference received, including interference that may cause undesired operation.

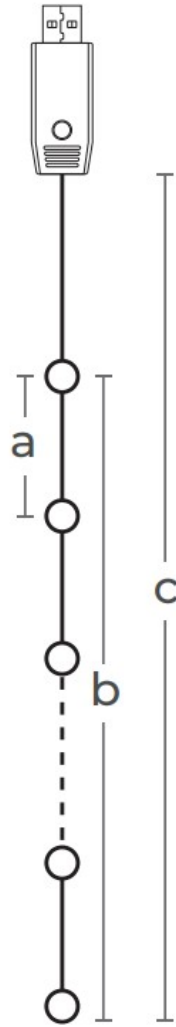
Note: This equipment has been tested and found to comply with the limits for a Class B digital device, pursuant to part 15 of the FCC Rules. These limits are designed to provide reasonable protection against harmful interference in a residential installation. This equipment generates, uses and can radiate radio frequency energy and, if not installed and used in accordance with the instructions, may cause harmful interference to radio communications. However, there is no guarantee that interference will not occur in a particular installation. If this equipment does cause harmful interference to radio or television reception, which can be determined by turning the equipment off and on, the user is encouraged to try to correct the interference by one or more of the following measures:

- Reorient or relocate the receiving antenna.
- Increase the separation between the equipment and receiver,
- Connect the equipment into an outlet on a circuit different from that to which the receiver is connected.
- Consult the dealer or an experienced radio/TV technician for help.

Note: The Grantee is not responsible for any changes or modifications not expressly approved by the party responsible for compliance. such modifications could void the user's authority to operate the equipment.

The device has been evaluated to meet general RF exposure requirement.

To maintain compliance with FCC's RF exposure guidelines, the distance must be at least 20 cm between the radiator and your body, and fully supported by the operating and installation configurations of the transmitter and its antenna(s).



Dimensions	
a	6cm/2.36"
b	600cm/236.2"
c	785cm/309"

Model LT-TWL

Color: RGB 16 million colors

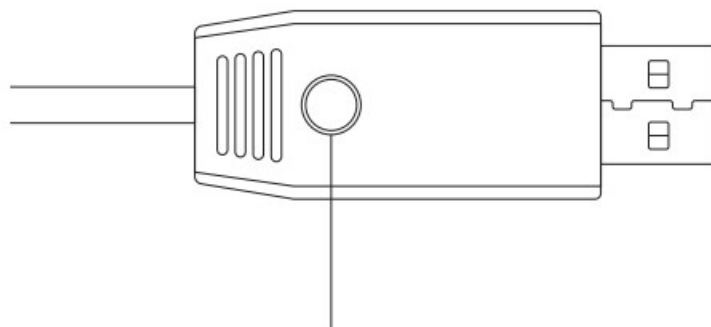
Connectivity Protocol: Bluetooth

Working Voltage: 5V/2A

Operating Temperature: -5~45°C

Life Span: About 20,000 hours

Controller



- Press – On / Switch Effects (8 regular effects + 2 music modes)
- Press and hold for 2 seconds – Loop all 25 effects
- Press and hold for 5 seconds – Off
- Press and hold 10 seconds for twice – Restore factory settings

App Download



Please scan the QR code to download the 'LED SMART' App.



<https://apps.apple.com/app/led-smart/id1290019246>
<https://play.google.com/store/apps/details?id=com.ledsmart>

*This application requires iOS 10.0 or later / Android 4.4 or later.

1. Download and install the "LED SMART" App.
2. Go to 'Settings' of your mobile device and turn on BT.
3. App automatically searches and lists all available devices nearby. Select your device to connect, then you can fully control lights.



* If you are using an Android mobile device, please make sure you have enabled precise location access and nearby devices permission for our App.

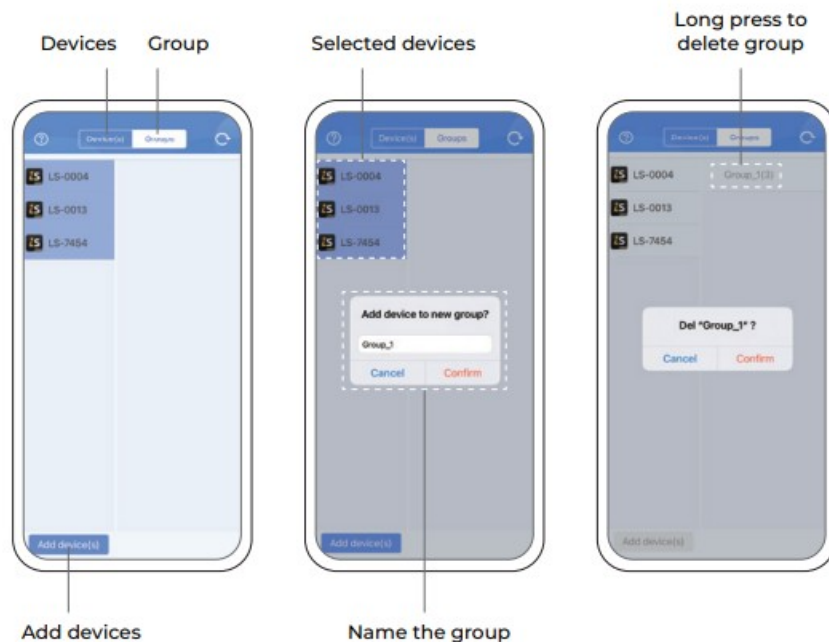
* Generally, 1 mobile device can group up to 5 devices together and control them simultaneously. This may vary from different phones.



* The user interfaces provided above are for reference only, and might be different from the latest version of the App.

Grouping

1. Turn on multiple devices, keep the devices connected with the App and click the 'Group' button
2. Select the devices you wish to be grouped, click 'Add Device', and name the group to complete grouping
3. If you need to delete a group, just long-press the group to delete it.



FQA

1. The device cannot be connected?


(1) Check whether the equipment is normally powered; (2) Whether the Bluetooth of the mobile phone is turned on; (3) Whether there are other mobile phones already connected, please disconnect if they are connected, Bluetooth 4.0 only supports one-to-many, and does not support many-to-many control; (4) If you still can't connect under normal operation, exit the APP and then reopen it; (5) Exit the APP, then restart the phone, power on the device again, reopen the APP software and connect again.

2. Why doesn't the timing work normally?

Customer Support:

For any problem with the product, please feel free to contact us via Amazon Message, we will reply and resolve your problem in 24 hours.

Documents / Resources

	Linktop IOT LT-TWL Leather Cord Lamp Remote Control [pdf] User Guide LT-TWL Leather Cord Lamp Remote Control, LT-TWL, Leather Cord Lamp Remote Control, Cord Lamp Remote Control, Lamp Remote Control, Remote Control
---	--

References

- [User Manual](#)

Manuals+. Privacy Policy

This website is an independent publication and is neither affiliated with nor endorsed by any of the trademark owners. The "Bluetooth®" word mark and logos are registered trademarks owned by Bluetooth SIG, Inc. The "Wi-Fi®" word mark and logos are registered trademarks owned by the Wi-Fi Alliance. Any use of these marks on this website does not imply any affiliation with or endorsement.