



LINKSYS PLUSB10 PowerLine USB Adapter User Guide

[Home](#) » [Linksys](#) » LINKSYS PLUSB10 PowerLine USB Adapter User Guide 

LINKSYS®

Contents

- [1 PLUSB10 PowerLine USB Adapter](#)
- [2 System Requirements](#)
- [3 Installation Process](#)
- [4 Using the Setup Utility CD-ROM](#)
- [5 Installing the USB Driver for the PowerLine USB Adapter](#)
- [6 Documents / Resources](#)
 - [6.1 References](#)

PLUSB10 PowerLine USB Adapter



**PowerLine USB Adapter
PLUSB10**

This Quick Installation is meant to help you install the USB Adapter quickly and easily. For detailed instructions on installation and configuration and further setup options, please consult the User Guide.
Instant PowerLine™

System Requirements

- Pentium-Class 90MHz or Higher
- Minimum 32MB RAM
- USB-Ready PC
- Windows 98, Millennium, 2000, or XP
- CD-ROM Drive

Included with the Linksys PLUSB10 PowerLine USB Adapter

- Instant PowerLine USB Adapter (1)
- One Power Cord (2)
- One USB Cable (3)
- One Setup Utility CD-ROM (4)
- One User Guide (5)
- Quick Installation (this document) and Registration Card (not shown)



Installation Process

For more detailed instructions, please refer to the User **Guide**.



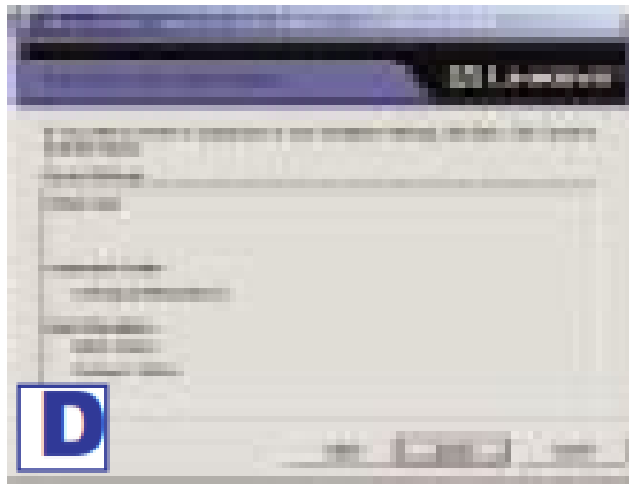
Note: You must have Windows 98, 2000, Millennium, or XP installed on your PC. Windows 95 and NT do not support the PowerLine USB Adapter.

Using the Setup Utility CD-ROM

- A. Insert the Setup Utility CD-ROM into the computer's CD-ROM drive. The Setup Utility CD-ROM should run automatically. If it does not, click the Start button and choose Run. In the box that appears, enter D:\setup.exe (if "D" is the letter of your CD-ROM drive).
- B. To install the PowerLine USB Adapter, click Next.
- C. Enter your User Name and Organization Name. Select Anyone who uses this computer (all users) to install a shortcut to the Security Configuration Utility on every user's desktop (This selection is not available for Windows 98 and ME users). Then click the Next button.



- D. Click the Install button to begin installation of the Security Configuration Utility.



Windows 2000 users: Windows will inform you that there was no digital signature found. Click the Yes button to proceed with the installation.

Windows XP users: Windows will notify you that the driver has not passed Windows Logo testing. Click the Continue Anyway button.

E. Click the Finish button to exit.



F. Eject the Setup Utility CD-ROM from the CD-ROM drive.

Connecting the Power Line USB Adapter to Your PC

A. Insert the end of the USB cable with the Type A connector (rectangular) into the computer's USB port.



B. Insert the USB cable's Type B connector into the USB port on the PowerLine USB Adapter.

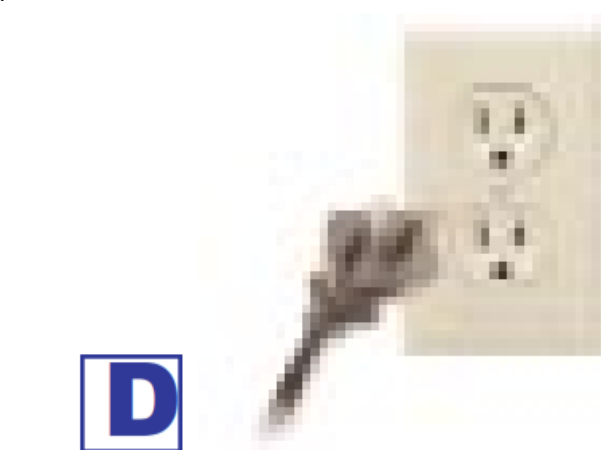


C. Plug the power cord into the powerline port on the PowerLine USB Adapter.



Note: Use only the supplied power cord to connect the USB Adapter to the power outlet.

D. Plug the other end of the power cord into an electrical outlet.



Note: For highest performance, plug the PowerLine USB Adapter's power cord directly into a power outlet on the wall. Do not plug the device into a UPS or power strip with surge protection. The PowerLine USB Adapter has its own power filter for protection against surges.

Your hardware installation is complete. For setup information or any other questions, refer to the User Guide.

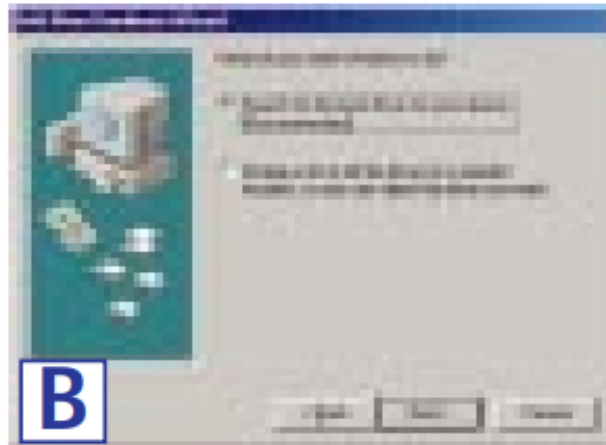
Installing the USB Driver for the PowerLine USB Adapter

Proceed to the instructions for your operating system: Windows 98, 2000, Millennium, or XP. **Note:** Your Windows operating system may ask for its Windows Installation Files.

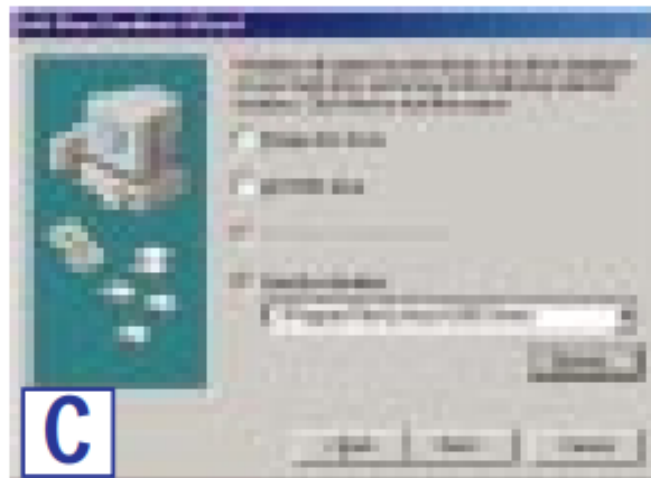
Windows 98

A. Windows 98 will automatically detect the presence of the PowerLine USB Adapter hardware in your computer once you have completed the hardware installation. Click the Next button.

B. Click the radio button next to Search for the best driver for your device. (Recommended).

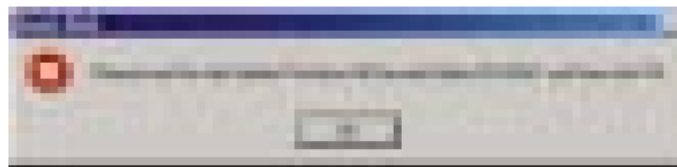


C. Windows will look for new drivers and ask you which locations you want to search. Select Specify a location; and enter C:\Program Files\Linksys\USB Drivers in the location field (if "C" is the letter of your hard drive). Click the Next button to continue.



D. Windows will display a screen announcing that it is ready to install the driver for the PowerLine USB Adapter. Click the Next button to continue.

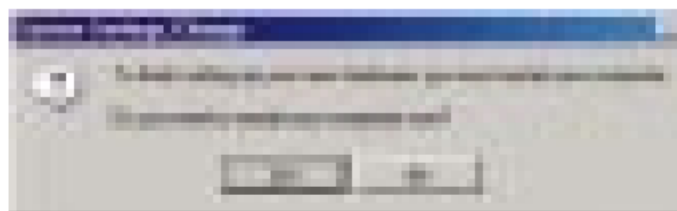
E. Windows will ask you to supply your Windows 98 Installation Files. Insert the Windows 98 CD-ROM into the CD-ROM drive of your computer. Then click the OK button to continue.



E

F. Windows will tell you when it has finished installing the new driver. Click the Finish button.

G. Click the Yes button to restart your computer, or click the No button to restart later.

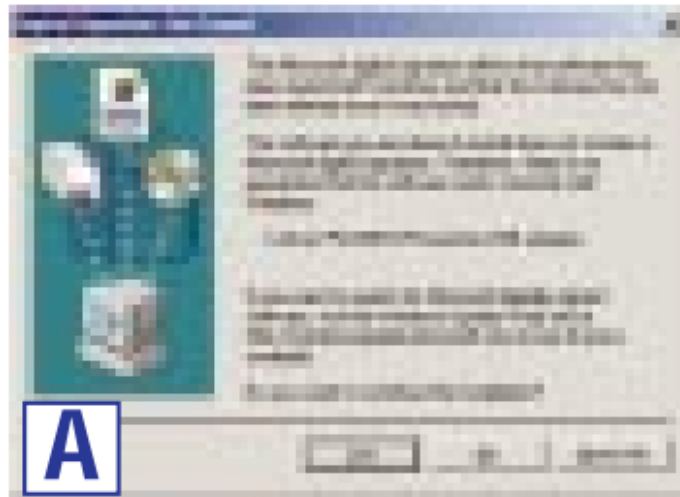


G

Your driver installation is complete. For setup information or any other questions, refer to the User Guide.

Windows 2000

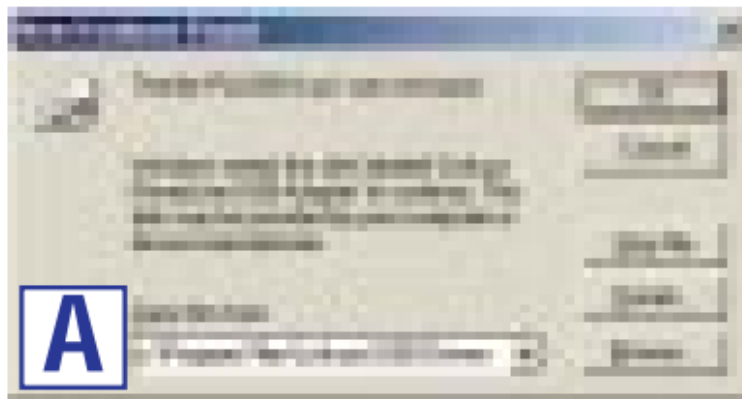
A. Windows 2000 will automatically detect the presence of the PowerLine USB Adapter in your computer after you have completed the hardware installation. Windows will inform you that there was no digital signature found. Click the Yes button to install the USB driver.



Your driver installation is complete. For setup information or any other questions, refer to the User Guide.

Windows Millennium

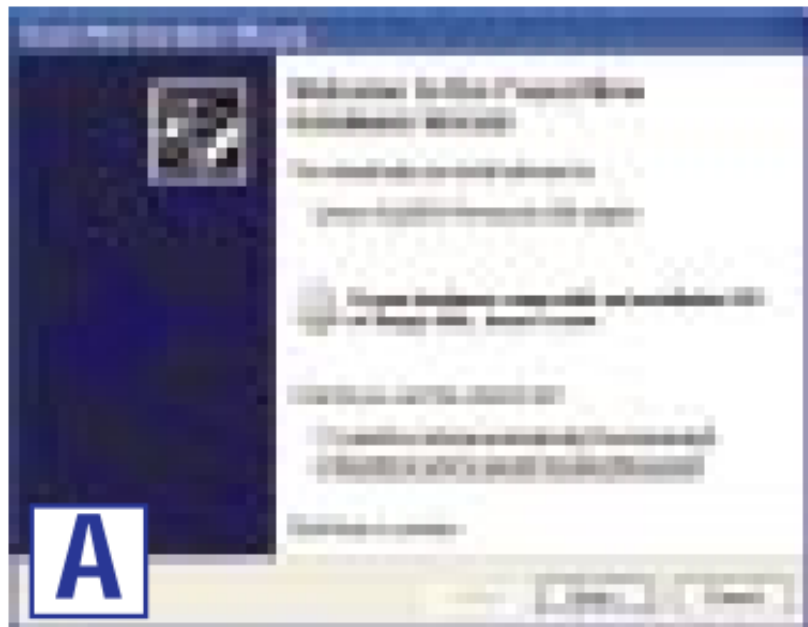
A. Windows Millennium will automatically detect the presence of the PowerLine USB Adapter in your computer after you have completed the hardware installation. Windows will ask you the location of the USB driver files. Enter C:\Program Files\Linksys\USB Drivers in the Copy files from: field (if "C" is the letter of your hard drive). Then click the OK button to install the USB driver.



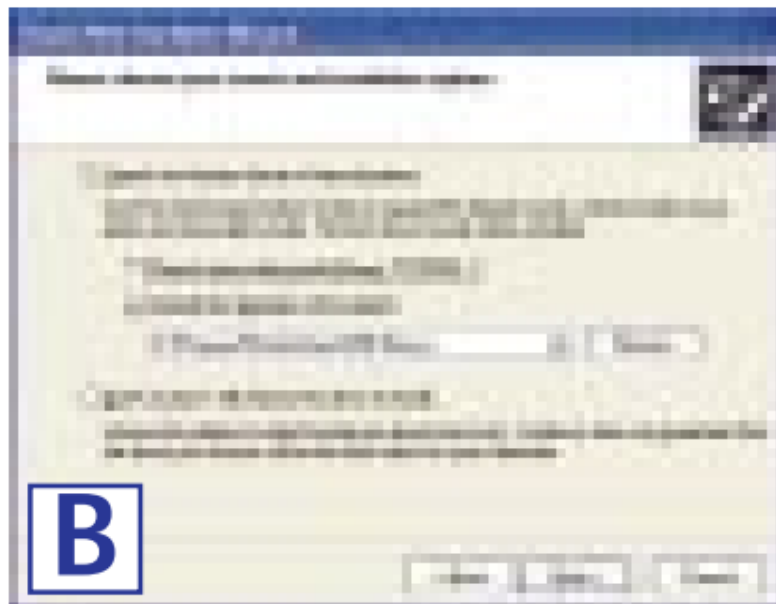
Your driver installation is complete. For setup information or any other questions, refer to the User Guide.

Windows XP

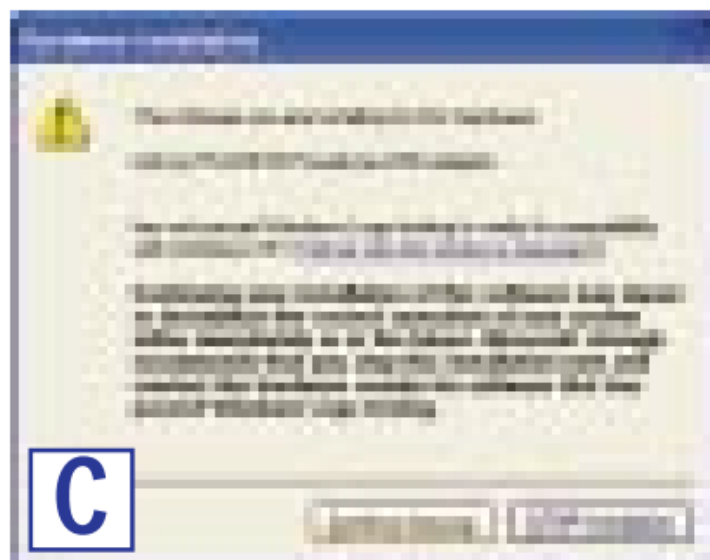
A. Windows XP will automatically detect the presence of the PowerLine USB Adapter in your computer after you have completed the hardware installation. Click the radio button next to Install from a list or specific location (Advanced). Then click the Next button.



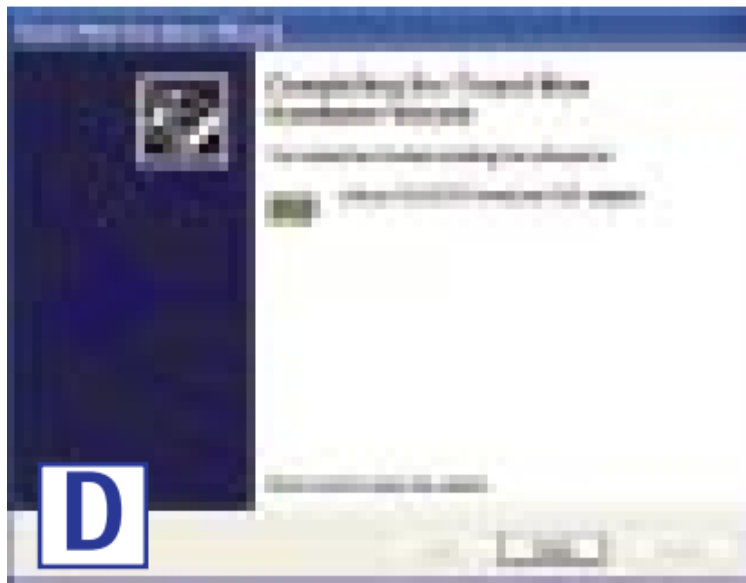
B. Click the radio button next to Search for the best driver in these locations. Select Include this location in the search:, and enter C:\Program Files\Linksys\USB Drivers in the location field (if "C" is the letter of your hard drive). Then click the Next button.



C. Windows will notify you that the driver has not passed Windows Logo testing. Click the Continue Anyway button.




D. Windows will tell you when it has finished installing the new driver. Click the Finish button.



Your driver installation is complete. For setup information or any other questions, refer to the User Guide.



Documents / Resources

	LINKSYS PLUSB10 PowerLine USB Adapter [pdf] User Guide PLUSB10 PowerLine USB Adapter, PLUSB10, PowerLine USB Adapter, USB Adapter, Adapter
---	---

References

-  [Manual-Hub.com - Free PDF manuals!](#)
- [User Manual](#)

[Manuals+](#), [Privacy Policy](#)

This website is an independent publication and is neither affiliated with nor endorsed by any of the trademark owners. The "Bluetooth®" word mark and logos are registered trademarks owned by Bluetooth SIG, Inc. The "Wi-Fi®" word mark and logos are registered trademarks owned by the Wi-Fi Alliance. Any use of these marks on this website does not imply any affiliation with or endorsement.