



LINKSYS MX6200 Series Velop Pro 6E Tri-Band Cognitive Mesh Wi-Fi System User Guide

[Home](#) » [Linksys](#) » LINKSYS MX6200 Series Velop Pro 6E Tri-Band Cognitive Mesh Wi-Fi System User Guide 

LINKSYS[™] USER GUIDE VELOP PRO 6E MX6200 Series

Contents

- [1 Product Overview](#)
- [2 Set Up](#)
- [3 Wi-Fi System Settings](#)
- [4 Connect Directly To Your Router](#)
- [5 How to restore factory defaults](#)
- [6 Specifications](#)
- [7 Documents / Resources](#)
 - [7.1 References](#)

Product Overview

Your Linksys VELOP PRO 6E System is a tri-band mesh Wi-Fi router with 2.4 GHz, 5 GHz and 6 GHz radios.

Set Up

IMPORTANT—Linksys nodes can be set up as parent nodes or child nodes. A parent node must be connected with an ethernet cable to your modem or modem router. Once set up wirelessly, child nodes can be connected to another node wirelessly or with ethernet cables.

If you are adding this new node as parent node to an existing Linksys whole-home mesh Wi-Fi system, factory reset all nodes and add them to the system after the new node is setup and working.

Download the Linksys app. You need this app to set up a Linksys whole-home mesh Wi-Fi system.

Go to the app store for your device and search for Linksys. 

Install the app, open it and follow the instructions.

You will create a Linksys account so you can use the app to view or change your system settings from anywhere you have an internet connection.

Among the many things you can do with your Linksys account:

- Change your Wi-Fi name and password
- Set up guest access
- Connect devices to Wi-Fi with WPS
- Block internet with parental controls
- Test your internet connection speed

Note—During setup we'll send a verification email. From your home network, click the link in the email.

Other than plugging in the power and the ethernet cable, the app-based setup process does the work for you. Once connected, use the app to personalize your Wi-Fi by giving it a name and password. You also can give nodes names based on where they are so you can identify them in the rare case where things need attention.

Print this page, then record your Wi-Fi and account settings in the table as a reference. Store your notes in a safe place.

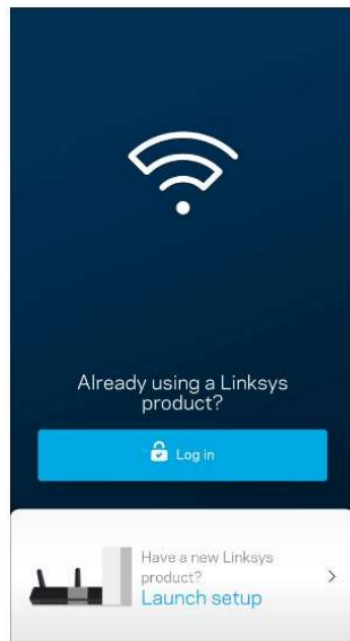
Wi-Fi Name	
Wi-Fi Password	
Admin Password	
Guest Access Name	
Guest Access Password	
Linksys App Login Email	
Linksys App Password	

Wi-Fi System Settings

Using your Linksys app, you can view or change your system settings to make your Wi-Fi more secure or to work better with a device or game. You can access settings from anywhere in the world if you have an internet connection. You can also access settings using your router password when connected to your home network even if you do not have an internet connection.

Log in to the Linksys app

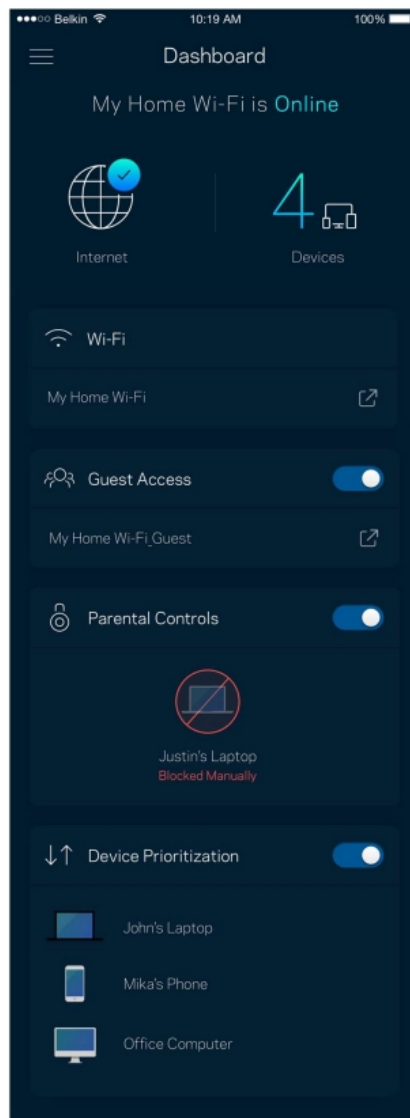
1. Open the Linksys app.



2. Enter the email address you used when creating your account.
3. Enter your account password.
4. Tap Log in.

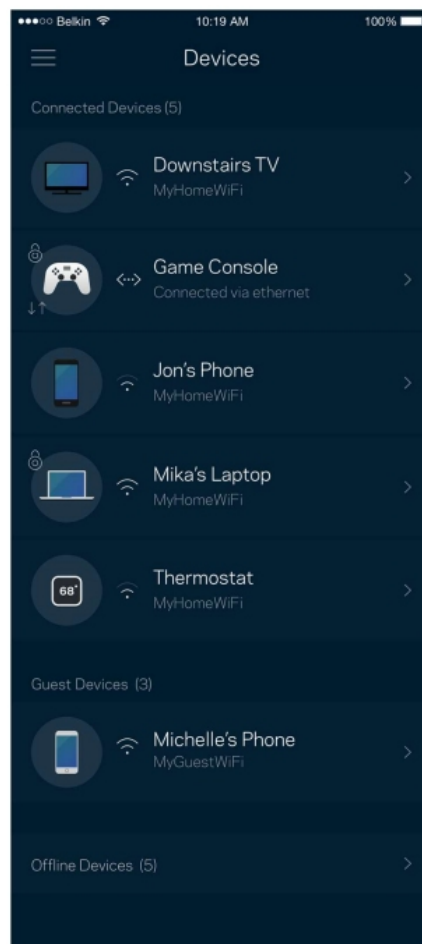
Dashboard

Dashboard is a snapshot of your Wi-Fi. See how many devices are connected to your system, share Wi-Fi password and allow guest access to your Wi-Fi. Dashboard also shows you if any devices have parental controls on them or have been prioritized for Wi-Fi access.



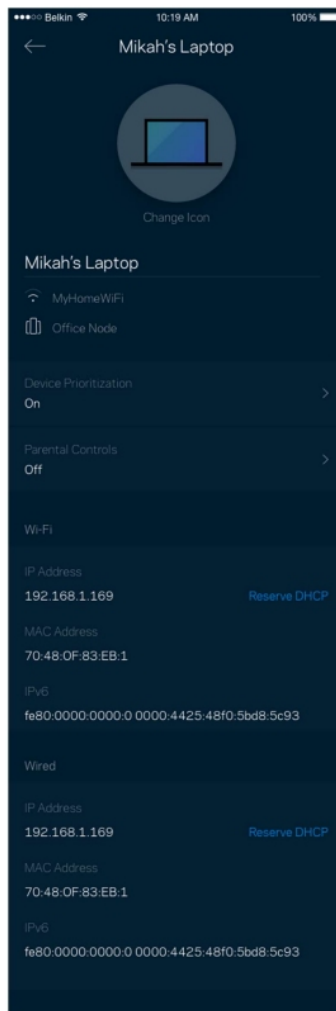
Devices

View and change details for all devices connected to your Wi-Fi. You can view devices on your main network and your guest network, or display information about each device.



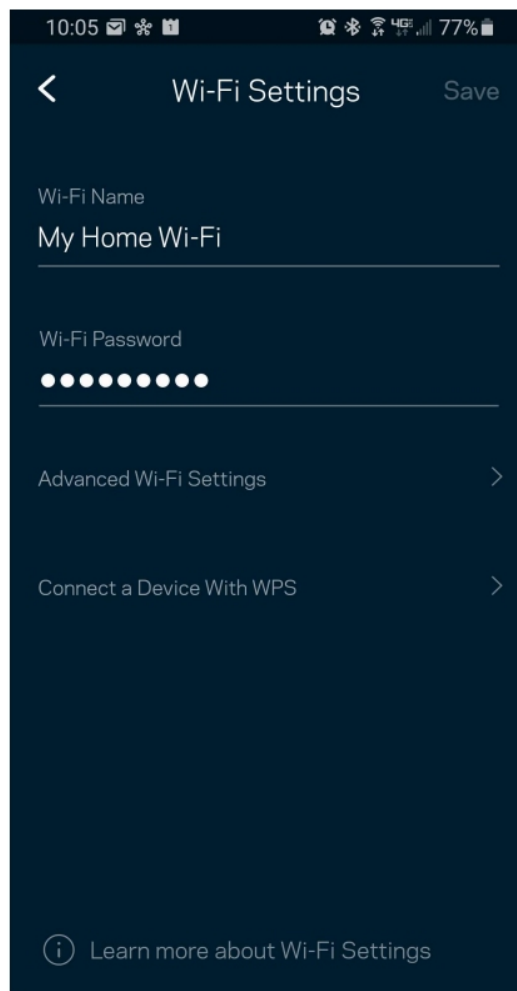
To view or change device details

From the Devices screen you can edit device names and change the device icons. You also can prioritize devices, set parental controls, and see Wi-Fi details. Tap on any device to see details.



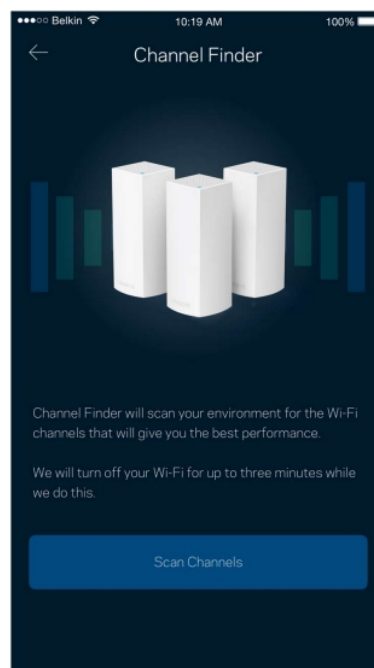
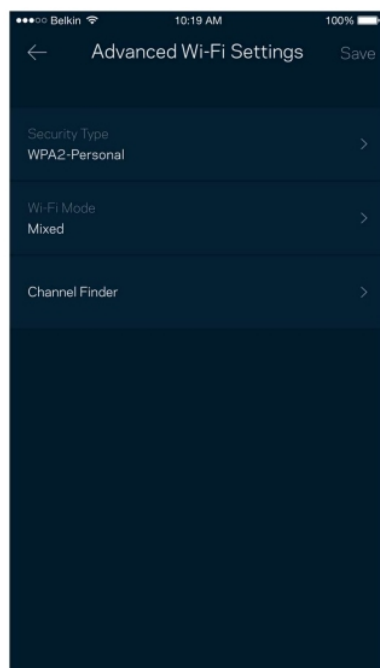
Wi-Fi Settings

View or change your Wi-Fi name and password and connect devices using Wi-Fi Protected Setup™.



Advanced Settings

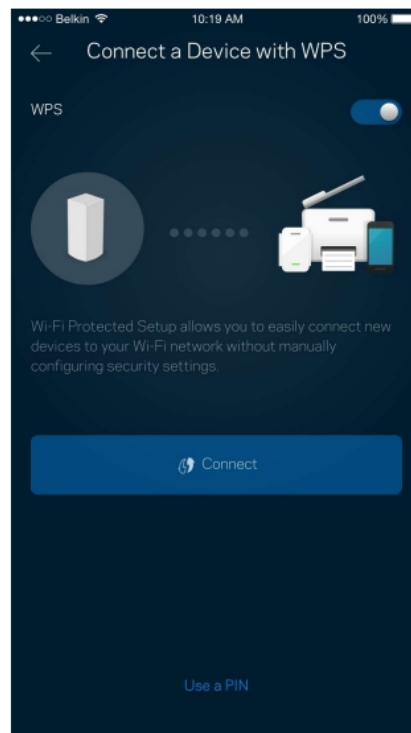
Advanced users can change the default security type and Wi-Fi mode. Do not change these unless you have a lot of experience with Wi-Fi networks. Channel Finder will search for the most-open Wi-Fi channels in your area to ensure you get the best performance from your system. If you have more than one node in your system, Channel Finder will find the best channel for each node.



Connect a Device with WPS

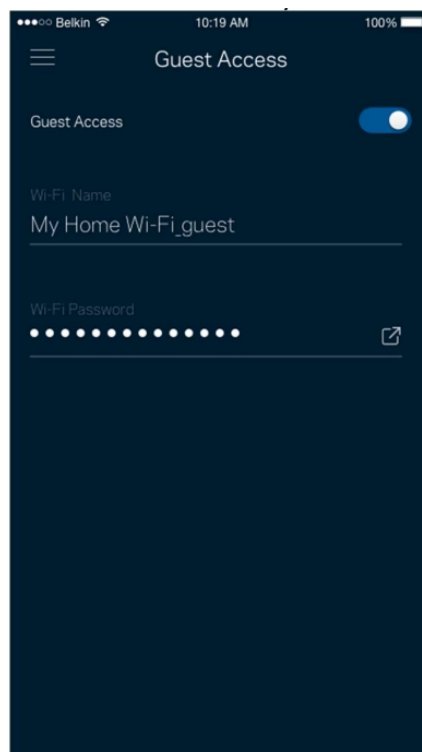
Wi-Fi Protected Setup allows you to easily connect wireless devices to your Wi-Fi without manually entering

security settings.



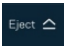
Guest Access

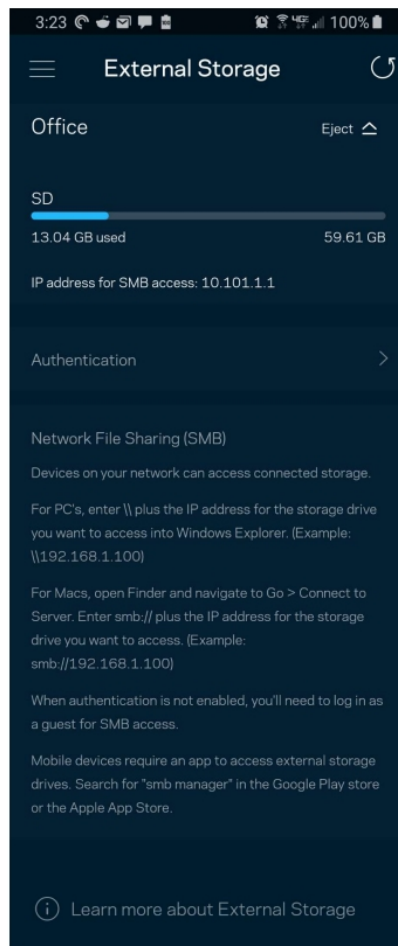
Use your Guest Access feature to allow guests to get online while restricting their access to other resources connected to your Wi-Fi. Send the password by text message or email.



External Storage

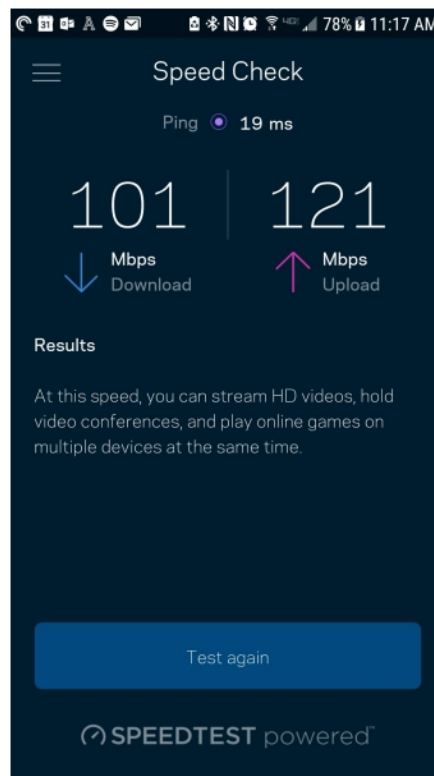
See which node an external drive is connected to, check the amount of free space left, and enable authentication by setting a username and password. (Only when a drive is plugged in to a node's USB port.)

Be sure to tap Eject  before removing a drive to avoid losing data.



Speed Check

Run a speed check to make sure you are getting the speeds you are paying for. Speed check also helps in Device Prioritization because results determine how Wi-Fi is distributed to the prioritized devices.

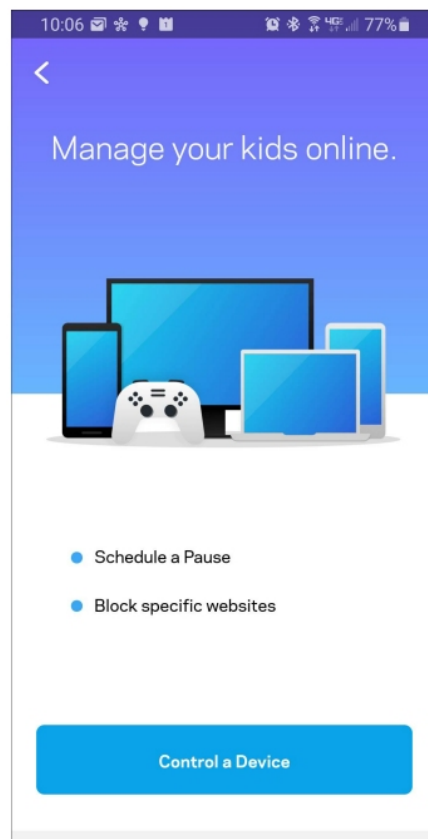


- Download speed is the rate at which internet content is transferred to your mesh Wi-Fi system.
- Upload speed is the rate at which you can upload content to the internet.

Note—Internet connection speeds are determined by a variety of factors, including ISP account type, local and worldwide internet traffic, and number of devices in your home that are sharing the internet connection.

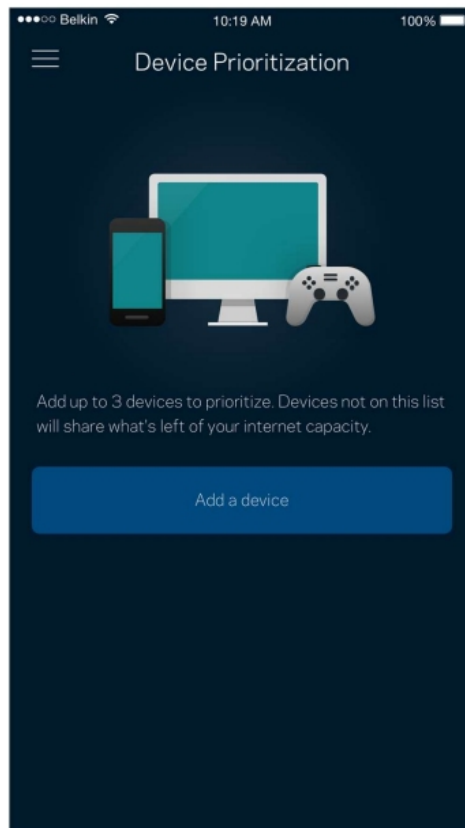
Parental Controls

Parental controls allow you to control when your kids are online and what they're doing there. Pause internet to specific devices, or block specific websites.



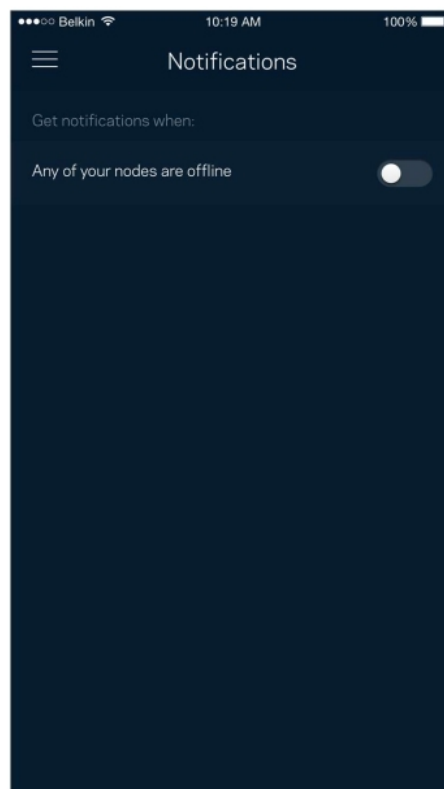
Device Prioritization

Choose up to three devices for priority usage of your internet connection. Those devices – wired and/or wireless – always will have the best access when connected. The app runs a speed check to determine how to best distribute Wi-Fi to prioritized devices. Other devices will share the leftover capacity. Prioritized devices appear on Dashboard.



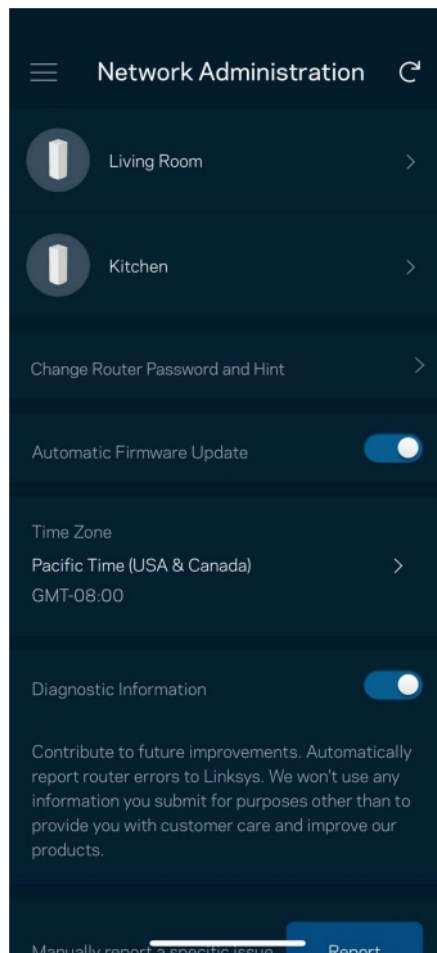
Notifications

If you have more than one node, we can notify you when child nodes in your system go offline. Child nodes are any that are not wired to your modem. You have to turn on notifications in your mobile device settings to allow the app to notify you.



Network Administration

Use the Network Administration screen to change the admin password and hint, and check various identifiers (model number, serial number, and IP details) for all nodes in your Wi-Fi.



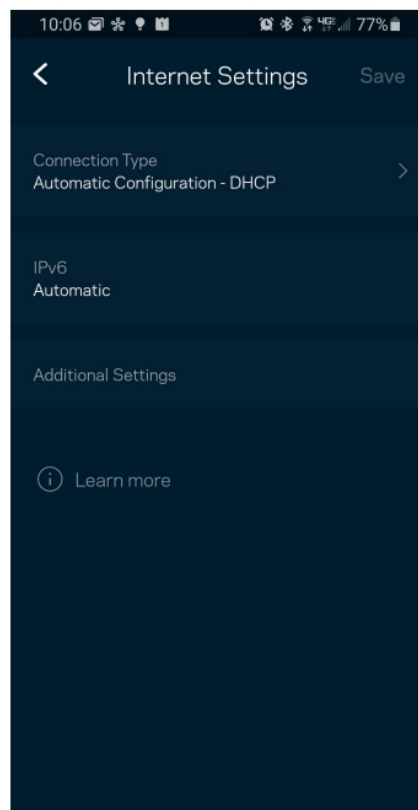
Opt in to automatically report crashes to Linksys and contribute to improving the Wi-Fi experience. You also can manually report specific issues to Linksys. The following information will be sent with your description of the issue:

● App version	● Login Type (cloud: show email address associated, local: display “Router admin”)
● Device model	● WAN Connection type (display Wi-Fi or ethernet)
● Device OS version	● Time: date (mo/day/year, time, time zone)

Advanced Settings

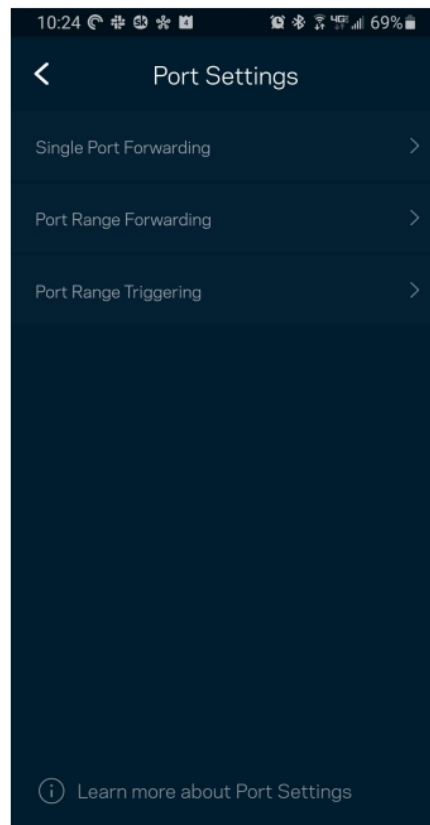
Internet Settings

You can choose how your mesh Wi-Fi system connects to the internet. The default is Automatic Configuration – DHCP. Other connection types depend on your internet service provider or how you plan to use your system. Advanced users can use Additional Settings to clone MAC addresses and set MTU (maximum transmission unit).



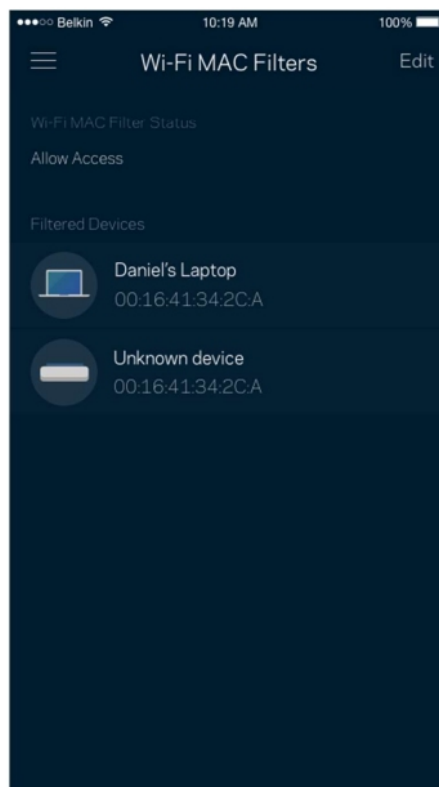
Port Settings

Port forwarding—for a single port, multiple ports or a range of ports—sends traffic inbound on a specific port or ports to a specific device on your network. In port range triggering, your router watches outgoing data for specific port numbers. The router remembers the IP address of the device that requests the data so that when the requested data returns, it is routed back to the proper device.



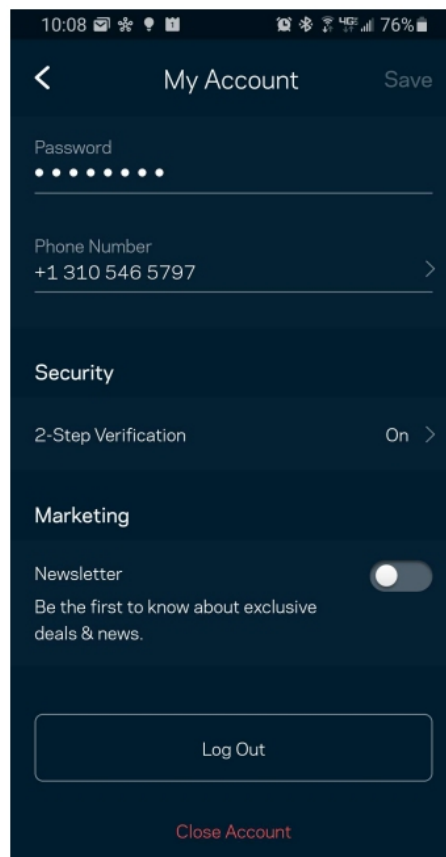
Wi-Fi MAC Filters

Every network device has a unique 12-digit MAC (media access control) address. You can create a list of MAC addresses and regulate how devices use your Wi-Fi.



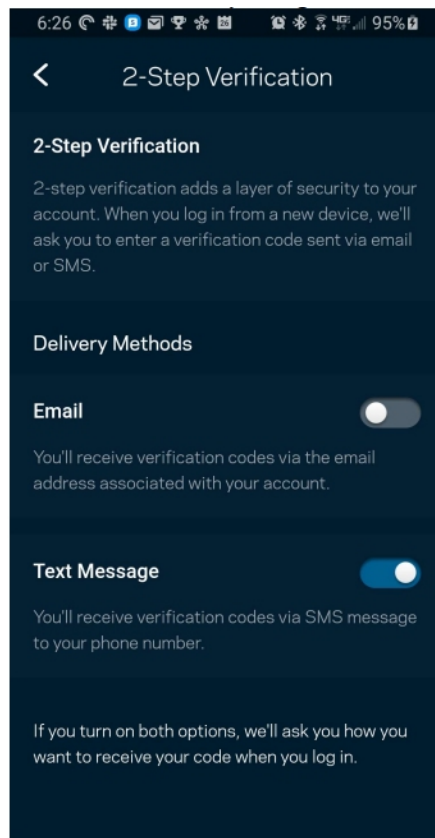
My Account

Change your Linksys app password and opt in to receive the latest news and deals from Linksys.



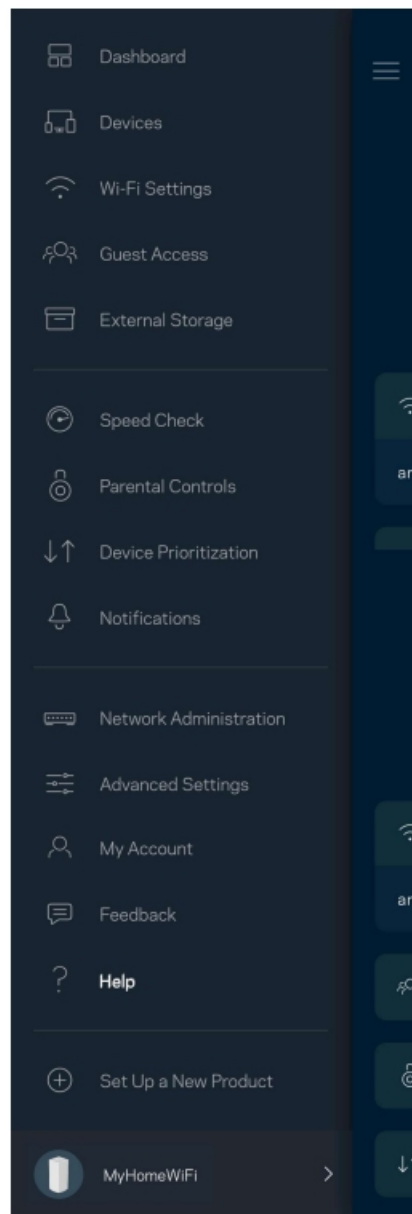
2-Step Verification

Add a layer of security to your Linksys account by requiring a verification code delivered to you by email or text when you log in from a new device. You can choose to remember a device for 30 days.



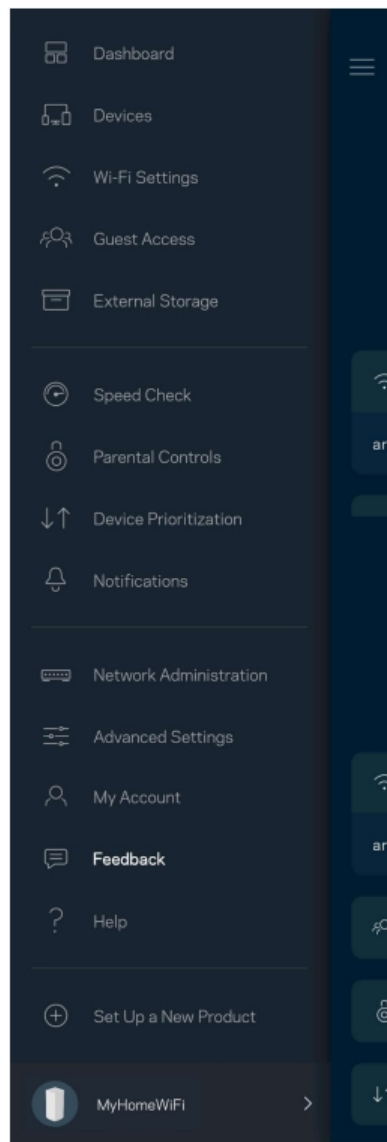
Help

Having trouble with the app? Just need a little more information about a feature? Tap Help for an explanation.



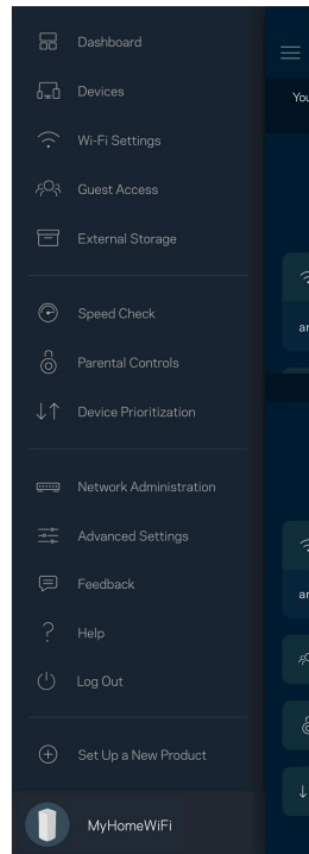
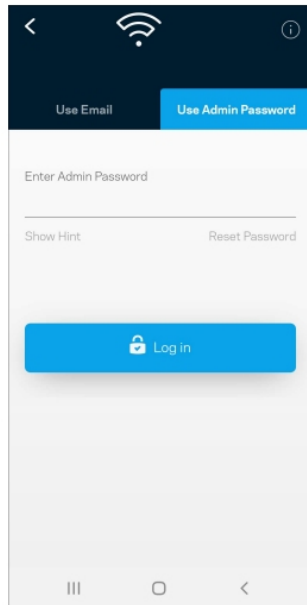
Feedback

Here's your chance to tell us what you think. Rate the app at your app store, send us a suggestion, or report an issue that's keeping you from a great experience.



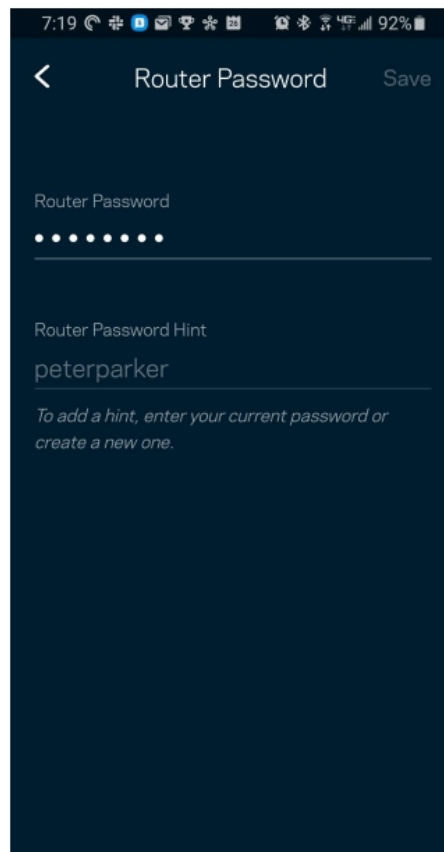
Connect Directly To Your Router

If you are not connected to the internet you still can access your mesh Wi-Fi system. Connect to your Wi-Fi name, launch the Linksys app and tap Log in. On the next screen, tap the Use Admin Password tab. You will not be able to access your Linksys account when not online.



Router Password

We created a secure admin password during setup. You won't be able to log in with Use Admin Password until you change it. Tap Network Administration and Change Router Password and Hint.



To keep your mesh Wi-Fi system secure, we'll send you an email if someone changes the admin password.

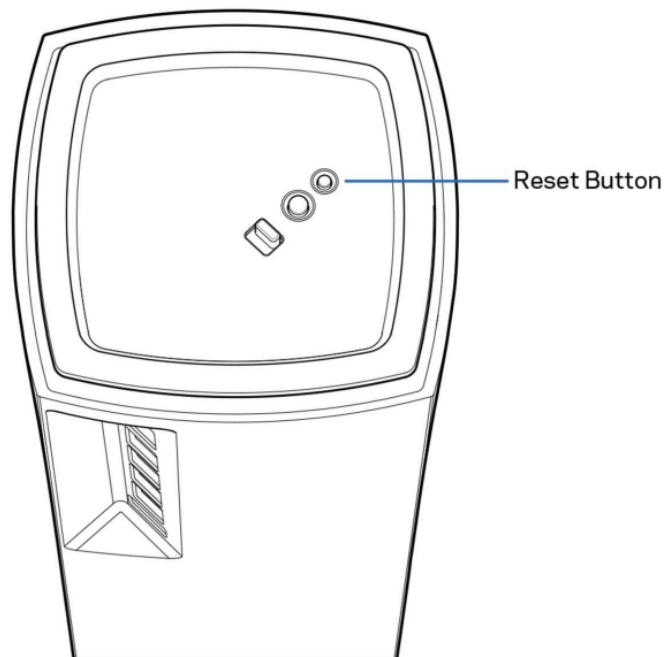


How to restore factory defaults

You should never need to factory reset your router—a very disruptive process. A factory reset restores your mesh Wi-Fi system to the state it was when you took it out of its box, requiring you to go through the setup process again. All settings you have customized in setup and since – things such as Wi-Fi name, passwords, security type – will be erased. All wireless devices will disconnect from your Wi-Fi.

To restore your router to factory defaults:

- With your node connected to power and turned on, press and hold the Reset button on the bottom. The light on top of the node will turn red and fade in pulses. Do not release the button until the light goes out and then turns bright red.



Specifications

Linksys VELOP PRO 6E

Model Name	VELOP PRO 6E System
Model Number	MX6200
Radio Frequency	2.4 GHz, 5 GHz and 6 GHz
# of Antennas	7 (internal)
Ports	One 1 Gbps (10/100/1000 Mbps) WAN port One 1 Gbps (10/100/1000 Mbps) LAN port Power
Buttons	Power switch, WPS, reset
Light	One, multicolored light for power and status
Security Features	WPA2/WPA3 Mixed Personal (2.4 GHz and 5 GHz bands only) WPA2 Personal (2.4 GHz and 5 GHz bands only) WPA3 Personal (all bands) Enhanced Open Only (all bands) Open and Enhanced Open (2.4 GHz and 5 GHz bands only) Open (2.4 GHz and 5 GHz bands only) – anyone can join Wi-Fi system
Security Key Bits	Up to 128-bit encryption

Environmental

Dimensions	95 mm x 95 mm x 192 mm
Unit Weight	
Power	12V, 2.5A
Certifications	
Operating Temp.	32° to 104° F (0 to 40° C)
Storage Temp.	-4° to 140° F (-20 to 60° C)
Operating Humidity	10% to 80% relative humidity, non-condensing
Storage Humidity	5% to 90% non-condensing

Notes:

For regulatory, warranty, and safety information, go to [Linksys.com/support/MX6200](http://support.linksys.com/support/MX6200).

Specifications are subject to change without notice.

Maximum performance derived from IEEE Standard 802.11 specifications. Actual performance can vary, including lower wireless network capacity, data throughput rate, range and coverage.

Performance depends on many factors, conditions and variables, including distance from the access point, volume of network traffic, building materials and construction, operating system used, mix of wireless products used, interference and other adverse conditions.

Note—Licenses and notices for third party software used in this product may be viewed on

<http://support.linksys.com/en-us/license>. Please contact <http://support.linksys.com/enus/gplcodecenter> for questions or GPL source code requests.

Visit linksys.com/support for award-winning technical support.

BELKIN, LINKSYS and many product names and logos are trademarks of the Belkin group of companies. Third-party trademarks mentioned are the property of their respective owners.

Linksys USA, Inc.

Regulatory Information

Linksys Velop Pro 6E (MX6200)

Wireless Regulatory Information

FCC Statement

This device complies with Part 15 of the FCC Rules. Operation is subject to the following two conditions:

(1) This device may not cause harmful interference, and (2) this device must accept any interference received, including interference that may cause undesired operation.

This product has been tested and complies with the specifications for a Class B digital device, pursuant to Part 15 of the FCC Rules. These limits are designed to provide reasonable protection against harmful interference in a residential installation. This equipment generates, uses, and can radiate radio frequency energy and, if not installed and used according to the instructions, may cause harmful interference to radio communications. However, there is no guarantee that interference will not occur in a particular installation. If this equipment does cause harmful interference to radio or television reception, which is found by turning the equipment off and on, the user is encouraged to try to correct the interference by one or more of the following measures:

- Reorient or relocate the receiving antenna
- Increase the separation between the equipment and devices
- Connect the equipment to an outlet other than the receiver's
- Consult a dealer or an experienced radio/TV technician for assistance

FCC Caution

Any changes or modifications not expressly approved by the party responsible for compliance could void the user's authority to operate this equipment.

This device and its antennas(s) must not be co-located or operating in conjunction with any other antenna or transmitter except in accordance with FCC multi-transmitter product procedures. FCC regulations restrict the operation of this device to indoor use only. This device meets all the other requirements specified in Part 15E, Section 15.407 of the FCC Rules.

2.4 GHz operation of this product in the USA is firmware-limited to channels 1 through 11. Selection of other channels is not possible.

The device for the band 5150-5250 MHz is only for indoor usage to reduce the potential for harmful interference to co-channel mobile satellite systems.

The country code selection is for non-US model only and is not available to all US model. Per FCC regulation, all WiFi product marketed in US must fixed to US operation channels only.

The operation of this device is prohibited on oil platforms, cars, trains, boats, and aircraft, except that operation of this device is permitted in large aircraft while flying above 10,000 feet.

Operation of transmitters in the 5.925-7.125 GHz band is prohibited for control of or communications with unmanned aircraft systems. Any changes or modifications not expressly approved by the party responsible for compliance could void the user's authority to operate this equipment.

FCC Radiation Exposure Statement

This equipment complies with FCC radiation exposure limits set forth for an uncontrolled environment. This equipment should be installed and operated with minimum distance 46 cm between the radiator and your body. This device and its antennas(s) must not be co-located or operating in conjunction with any other antenna or transmitter except in accordance with FCC multi-transmitter product procedures.

Wireless Disclaimer

The maximum performance for wireless is derived from IEEE Standard 802.11 specifications. Actual performance can vary, including lower wireless network capacity, data throughput rate, range and coverage. Performance

depends on many factors, conditions and variables, including distance from the access point, volume of network traffic, building materials and construction, operating system used, mix of wireless products used, interference and other adverse conditions.

Safety Notices

When using this product, basic precautions should always be followed, including, but not limited to, the following:

- Do not use this product near water, for example, in a wet basement or near a swimming pool.
- Avoid using this product during an electrical storm. There may be a remote risk of electric shock from lightning.
- Do not expose this product to rain or snow. Keep this product away from heat sources, direct sunlight, combustible gas, humidity, water, or other liquids.
- Do not use this product if visible defects are observed or if it has been wet or damaged or modified.

Contact the customer service support of Linksys for assistance.

- Do not disassemble, open, microwave, incinerate, paint, insert foreign objects into this product.
- Do not expose this product to fire or high temperature. Exposure to fire or high temperature may cause explosion.
- Do not expose this product to mechanical shock such as crushing, bending, puncturing, or shredding. Avoid dropping or placing heavy objects on this product.
- Please read the operating instructions and information on the minimum and maximum operating temperatures supplied with this product.
- To reduce the risk of injury, close supervision is necessary when this product is used near or by children.
- FCC regulations restrict operation of this device to indoor use only..
- Use of this product in a manner not recommended in these instructions may result in a risk of fire or injury to persons.

Third-Party Software or Firmware

The use of software or firmware not supported/provided by Linksys products may result that the equipment is no longer compliant with the regulatory requirements.

To view product information, visit <https://www.linksys.com/support-product?sku=MX6201>

And visit [linksys.com/support](https://www.linksys.com/support) for award-winning 24/7 technical support

8850-XXXXX A00

LINKSYS[™]

Documents / Resources



[LINKSYS MX6200 Series Velop Pro 6E Tri-Band Cognitive Mesh Wi-Fi System](#) [pdf] User Guide

MX6200 Series Velop Pro 6E Tri-Band Cognitive Mesh Wi-Fi System, MX6200 Series, Velop Pro 6E Tri-Band Cognitive Mesh Wi-Fi System, Tri-Band Cognitive Mesh Wi-Fi System, Cognitive Mesh Wi-Fi System, Mesh Wi-Fi System, Wi-Fi System

References

- [Linksys Official Support - User Guides, Downloads, FAQs](#)
- [Linksys Official Support - User Guides, Downloads, FAQs](#)
- [Linksys Official Support - User Guides, Downloads, FAQs](#)
- [User Manual](#)

[Manuals+](#), [Privacy Policy](#)

This website is an independent publication and is neither affiliated with nor endorsed by any of the trademark owners. The "Bluetooth®" word mark and logos are registered trademarks owned by Bluetooth SIG, Inc. The "Wi-Fi®" word mark and logos are registered trademarks owned by the Wi-Fi Alliance. Any use of these marks on this website does not imply any affiliation with or endorsement.