



## LINKSYS BEFCMU10 EtherFast Cable Modem with USB and Ethernet Connection User Guide

[Home](#) » [Linksys](#) » LINKSYS BEFCMU10 EtherFast Cable Modem with USB and Ethernet Connection User Guide



LINKSYS BEFCMU10 EtherFast Cable Modem with USB and Ethernet Connection User Guide



## Contents

- [1 Introduction](#)
- [2 Features](#)
- [3 Package Contents](#)
- [4 System Requirements](#)
- [5 Getting to Know the Cable Modem with USB and Ethernet Connection](#)
  - [5.1 Overview](#)
- [6 Connecting the Cable Modem to Your PC](#)
- [7 Installing the USB Driver for Windows 98](#)
- [8 Installing the USB Driver for Windows Millennium](#)
- [9 Installing the USB Driver for Windows 2000](#)
- [10 Installing the USB Driver for Windows XP](#)
- [11 Troubleshooting](#)
- [12 Installing the TCP/IP Protocol](#)
- [13 Renewing Your PC's IP Address](#)
- [14 Specifications](#)
- [15 Warranty Information](#)
- [16 LIMITED WARRANTY](#)
- [17 FCC STATEMENT](#)
- [18 Contact Information](#)
- [19 Documents / Resources](#)
- [20 Related Posts](#)

## Introduction

Congratulations on the purchase of your new Instant Broadband™ Cable Modem with USB and Ethernet Connection. With cable's high-speed Internet access, now you can enjoy the full potential of Internet applications.

Now you can make the most of the Internet and cruise the Web at speeds you never imagined possible. Cable Internet service means no more waiting for lagging downloads—even the most graphic-intensive Web pages load in seconds.

And if you're looking for convenience and affordability, the LinksysCable Modem really delivers! Installation is quick and easy. The Plug-and-Play EtherFast® Cable Modem with USB and Ethernet Connection connects directly to any USB ready PC—just plug it in and you're ready to surf the Internet. Or connect it to your LAN using a Linksys router and share that speed with everyone on your network.

So if you're ready to enjoy broadband Internet speed, then you're ready for the EtherFast® Cable Modem with USB and Ethernet Connection from Linksys. It's the easiest and most affordable way to harness the full potential of the Internet.

## Features

- Ethernet or USB Interface for Easy Installation
- Up to 42.88 Mbps Downstream and Up to 10.24 Mbps Upstream, Two way Cable Modem
- Clear LED Display
- Free Technical Support—24 Hours a Day, 7 Days a Week for North America Only
- 1-Year Limited Warranty

## Package Contents



- One EtherFast® Cable Modem with USB and Ethernet Connection
- One Power Adapter
- One Power Cord
- One USB Cable
- One RJ-45 CAT5 UTP Cable
- One Setup CD-ROM with User Guide
- One Registration Card

## System Requirements

- CD-ROM drive
- PC running Windows 98, Me, 2000, or XP equipped with USB port (to use the USB connection) or
- PC with 10/100 Network Adapter with RJ-45 Connection
- DOCSIS 1.0 Compliant MSO Network (Cable Internet Service Provider) and an Activated Account

## Getting to Know the Cable Modem with USB and Ethernet Connection

### Overview

A cable modem is a device that allows high-speed data access (such as to the Internet) via a cable TV network. A cable modem will typically have two connections, one to the cable wall outlet and the other to a computer (PC). The fact that the word “modem” is used to describe this device can be a little misleading only in that it conjures up images of a typical telephone dial-up modem. Yes, it is a modem in the true sense of the word since it MODulates and DEModulates signals. However, the similarity ends there, as these devices are much more complicated than telephone modems. Cable modems can be part modem, part tuner, part encryption/decryption device, part bridge, part router, part network interface card, part SNMP agent, and part Ethernet hub.

Cable modem speeds vary, depending on the cable modem system, cable network architecture, and traffic load. In the downstream direction (from the network to the computer), network speeds can reach 27 Mbps, an aggregate amount of bandwidth that is shared by users. Few computers will be capable of connecting at such high speeds, so a more realistic number is 1 to 3 Mbps. In the upstream direction (from computer to network), speeds can be up to 10 Mbps. Check with your Cable Internet Service Provider (ISP) for more specific information about upload (upstream) and download (downstream) access speeds.

In addition to speed, there's no need to dial in to an ISP when you are using your Cable Modem. Simply click on your browser and you're on the Internet. No more waiting, no more busy signals.

## The Backe Mode

- **Power Port**

The Power port is where the included power adapter is connected to the Cable Modem.

- **Reset Button**

Briefly pressing and holding in the Reset button allows you to clear the Cable Modem's connections and resets the Cable Modem to the factory defaults. Continued or repeated pressing of this button is not recommended.

- **LAN Port**

This port allows you to connect your Cable Modem to your PC or other Ethernet network device using a CAT 5 (or better) UTP network cable.

- **USB Port**

This port allows you to connect your Cable Modem to your PC using the included USB cable. Not all computers are able to use USB connections. For more information concerning USB and compatibility with your computer, see the next section.

- **Cable Port**

The cable from your ISP connects here. It is a round coaxial cable, exactly like the one that connects to the back of your cable box or television.



**Figure 2-1**

## The USB Icon

The USB icon shown below marks a USB port on a PC or device.



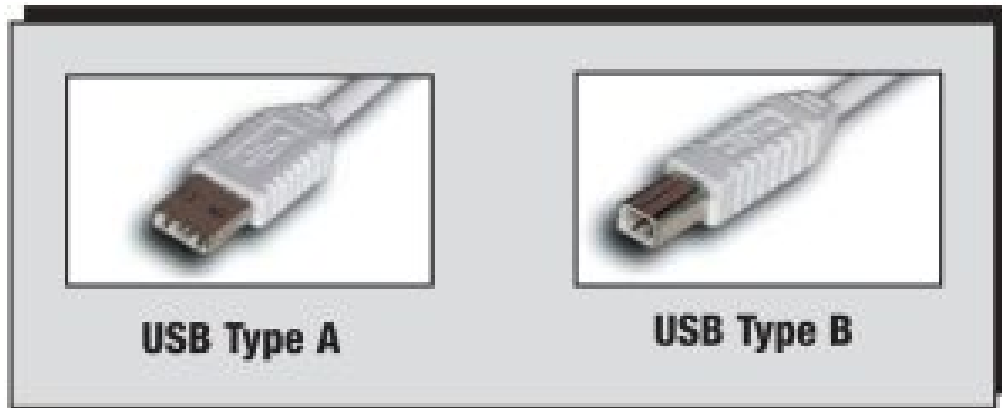
To use this USB device, you must have Windows 98, Me, 2000, or XP installed on your PC. If you do not have one of these operating systems, you cannot use the USB port.

Also, this device requires that a USB port is installed and enabled on your PC.

Some PCs have a disabled USB port. If your port doesn't seem to be working, there may be motherboard jumpers or a BIOS menu option that will enable the USB port. See your PC's user guide for details.

Some motherboards have USB interfaces, but no ports. You should be able to install your own USB port and attach it to your PC's motherboard using hardware purchased at most computer stores.

Your Cable Modem with USB and Ethernet Connection comes with a USB cable that has two different types of connectors. Type A, the master connector, is shaped like a rectangle and plugs into your PC's USB port. Type B, the slave connector, resembles a square and connects to the USB port on the back panel of your Cable Modem.



There is no USB Support on PCs running Windows 95 or Windows NT.

### The Front Panel

- **Power**

(Green) When this LED is on, it indicates that the Cable Modem is correctly supplied with power.

- **Link/Act**

(Green) This LED becomes solid when the Cable Modem is properly connected to a PC, either through an Ethernet or USB cable. The LED flashes when there is activity on this connection.

- **Send**

(Green) This LED is solid or will flash when data is being transmitted through the Cable Modem interface.

- **Receive**

(Green) This LED is solid or will flash when data is being received through the Cable Modem interface.

- **Cable**

(Green) This LED will go through a series of flashes as the Cable Modem goes through its startup and registration process. It will remain solid when registration is complete, and the Cable Modem is fully operational. The registration states are displayed as follows:

Cable LED State	Cable Registration Status
ON	Unit is connected and registration is complete.
FLASH (0.125 sec)	Ranging process is OK.
FLASH (0.25 sec)	Downstream is locked and synchronization is OK.
FLASH (0.5 sec)	Scanning for downstream channel
FLASH (1.0 sec)	Modem is in boot-up stage.
OFF	Error condition.



**Figure 2-4**

## **Connecting the Cable Modem to Your PC**

### **Connecting Using the Ethernet Port**

1. Make sure that you have TCP/IP installed on your computer. If you don't know what TCP/IP is or you don't have it installed, refer to the section in "Appendix B: Installing the TCP/IP Protocol."
2. If you have an existing cable modem that you are replacing, disconnect it at this time.
3. Connect the coaxial cable from your ISP/Cable Company to the Cable Port on the back of the Cable Modem. The other end of the coaxial cable should be connected in the manner proscribed by your ISP/Cable Company.
4. Connect a UTP CAT 5 (or better) Ethernet cable to the LAN Port on the back of the Cable Modem. Connect the other end of the cable to the RJ-45 port on your PC's Ethernet adapter or your hub/switch/router.
5. With your PC turned off, connect the power adapter included in your package to the Power Port on the back of the Cable Modem. Plug the other end of the power cord into a standard electrical wall socket. The Power LED on the front of the Cable Modem should light up and remain on.
6. Contact your Cable ISP to activate your account. Usually, your Cable ISP will need what is called a MAC Address for your Cable Modem in order to set up your account. The 12-digit MAC address is printed on a bar code label on the bottom of the Cable Modem. Once you have given them this number, your Cable ISP should be able to activate your account.

The Hardware Installation is now complete. Your Cable Modem is ready to use.

### **Connecting Using the USB Port**

1. Make sure that you have TCP/IP installed on your computer. If you don't know what TCP/IP is or you don't have it installed, refer to the section in the "Appendix B: Installing the TCP/IP Protocol."
2. If you have an existing cable modem that you are replacing, disconnect it at this time.
3. Connect the coaxial cable from your ISP/Cable Company to the Cable Port on the back of the Cable Modem. The other end of the coaxial cable should be connected in the manner proscribed by your ISP/Cable Company.
4. With your PC turned off, connect the power adapter included in your package to the Power Port on the back of the Cable Modem. Plug the other end of the adapter into a standard electrical wall socket. The Power LED on the front of the Cable Modem should light up and remain on.
5. Plug the rectangular end of the USB cable into your PC's USB port. Connect the square end of the USB cable into the Cable Modem's USB port.
6. Turn on your PC. During the boot up process, your computer should recognize the device and ask for driver installation. Refer to the chart below to locate the driver installation for your operating system. Once the driver installation is completed, return here for instructions on setting up your account.

<b>If you are installing drivers for</b>	<b>then turn to page</b>
<b>Windows 98</b>	<b>9</b>
<b>Windows Millennium</b>	<b>12</b>
<b>Windows 2000</b>	<b>14</b>
<b>Windows XP</b>	<b>17</b>

7. Contact your Cable ISP to activate your account. Usually, your Cable ISP will need what is called a MAC Address for your Cable Modem in order to set up your account. The 12-digit MAC address is printed on a bar code label on the bottom of the Cable Modem. Once you have given them this number, your Cable ISP should be able to activate your account.

## **Installing the USB Driver for Windows 98**

1. When the Add New Hardware Wizard window appears, insert the Setup CD into your CD-ROM drive and click Next.



2. Select Search for the best driver for your device and click the Next button.



**Figure 3-2**

3. Select CD-ROM drive as the only location where Windows will search for the driver software and click the Next button



**Figure 3-3**

4. Windows will notify you that it has identified the appropriate driver and is ready to install it. Click the Next button.





**Figure 3-4**

5. Windows will begin installing the driver for the modem. At this point, the installation may require files from your Windows 98 CD-ROM. If prompted, insert your Windows 98 CD-ROM into your CD-ROM drive and enter d:\win98 in the box that appears (where “d” is the letter of your CD-ROM drive). If you were not supplied with a Windows 98 CD-ROM, your Windows files may have been placed on your hard drive by your computer manufacturer. While the location of these files may vary, many manufacturers use c:\windows\options\cabs as the path. Try entering this path into the box. If no files are found, check your computer’s documentation or contact your computer manufacturer for more information
6. After Windows has completed installing this driver, click Finish

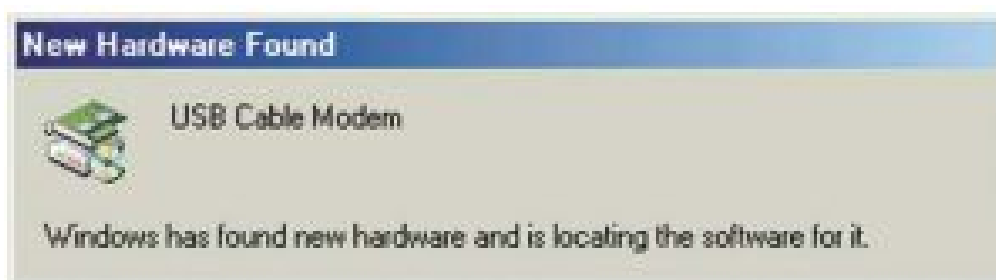


7. When asked if you want to restart your PC, remove all diskettes and CDROMs from the PC and click Yes. If Windows does not ask you to restart your PC, click the Start button, choose Shut Down, choose Restart, then click Yes.

The Windows 98 driver installation is complete. Return to the section on Connecting Using the USB Port to finish the set up.

### **Installing the USB Driver for Windows Millennium**

1. Start up your PC in Windows Millennium. Windows will detect new hardware connected to your PC



2. Insert the Setup CD into your CD-ROM drive. When Windows asks you for the location of the best driver, select Automatic search for a better driver (Recommended) and click the Next button.



3. Windows will begin installing the driver for the modem. At this point, the installation may require files from your Windows Millennium CD-ROM. If prompted, insert your Windows Millennium CD-ROM into your CD ROM drive and enter d:\win9x in the box that appears (where "d" is the letter of your CD-ROM drive). If you were not supplied with a Windows CD ROM, your Windows files may have been placed on your hard drive by your computer manufacturer. While the location of these files may vary, many manufacturers use c:\windows\options\install as the path. Try entering this path into the box. If no files are found, check your computer's documentation or contact your computer manufacturer for more information.
4. When Windows finishes installing the driver, click Finish.



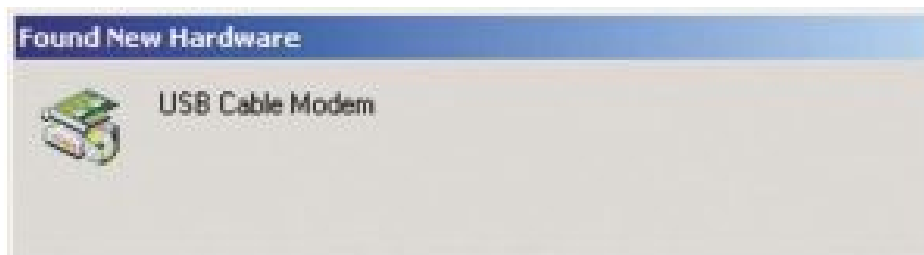
5. When asked if you want to restart your PC, remove all diskettes and CDROMs from the PC and click Yes. If Windows does not ask you to restart your PC, click the Start button, choose Shut Down, choose Restart, then click Yes.



The Windows Millennium driver installation is complete. Return to the section on Connecting Using the USB Port to finish the set up.

## Installing the USB Driver for Windows 2000

1. Start up your PC. Windows will notify you that it has detected new hardware. Insert the Setup CD into the CD-ROM drive.



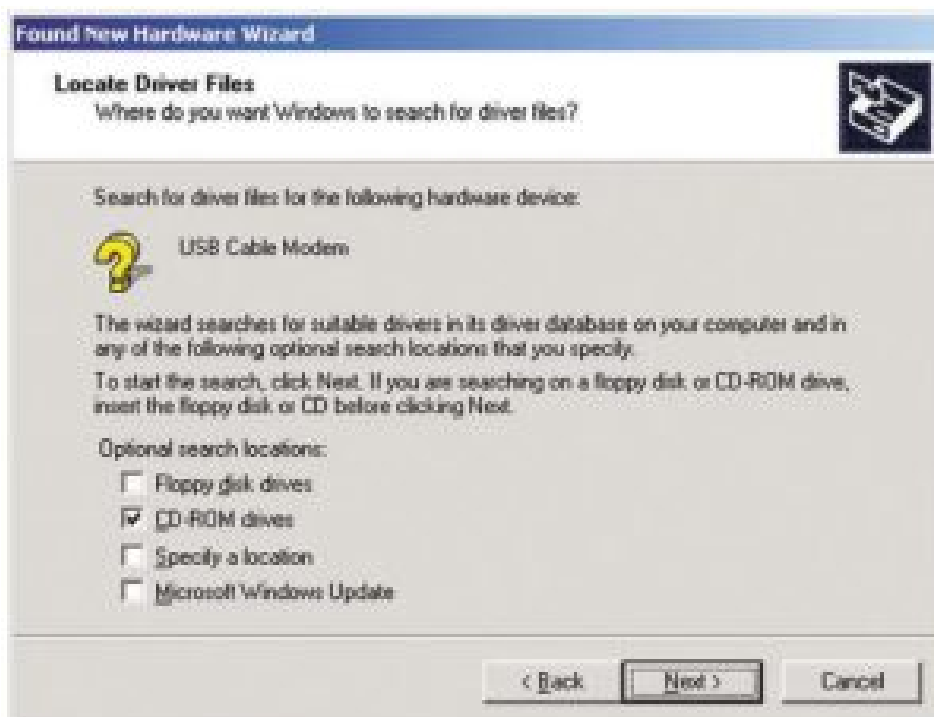
2. When the Found New Hardware Wizard screen appears to confirm that the USB Modem has been identified by your PC, make sure the Setup CD is in the CD-ROM drive and click Next.



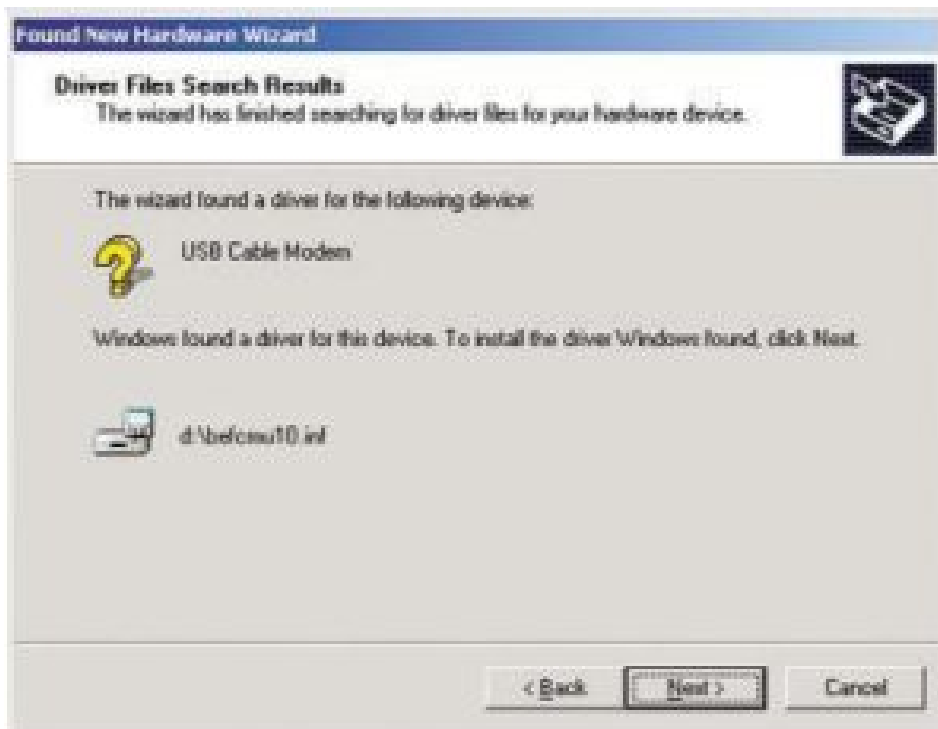
3. Select Search for a suitable driver for my device and click the Next button.



4. Windows will now search for the driver software. Select only CD-ROM drives and click the Next button.



5. Windows will notify you that it has located the appropriate driver and is ready to install it. Click the Next button.



6. When Windows has completed installing the driver, click Finish.



The Windows 2000 driver installation is complete. Return to the section on Connecting Using the USB Port to finish the set up.

## Installing the USB Driver for Windows XP

1. Start up your PC. Windows will notify you that it has detected new hardware. Insert the Setup CD into the CD-ROM drive.



2. When the Found New Hardware Wizard screen appears to confirm that the USB Modem has been identified by your PC, make sure that the Setup CD is in the CD-ROM drive and click Next.



3. Windows will now search for the driver software. Click the Next button.



4. When Windows has completed installing the driver, click Finish.



The Windows XP driver installation is complete. Return to the section on Connecting Using the USB Port to finish the set up.

## Troubleshooting

This section offers solutions to common issues that may occur during the installation and operation of your Cable Modem.

- **cannot access my e-mail or Internet service**



Make sure all of your connections are secure. Your Ethernet cable should be inserted completely into both the network card on the back of your computer and the port on the back of your Cable Modem. If you installed your Cable Modem using a USB port, check the connection of the USB cable to both devices. Check all cables between your computer and the

Cable Modem for frays, breaks or exposed wiring. Make sure your power supply is properly plugged into both the modem and a wall outlet or surge protector. If your Cable Modem is properly connected, the Power LED and Cable LED on the front of the modem should both be a solid color.

The Link/Act LED should be solid or flashing.

Try pressing the Reset button on the back of your cable modem. Using an object with a small tip, push the button until you feel it click. Then try reconnecting to your Cable ISP.

Call your Cable ISP to verify that their service is two-way. This modem is designed for use with two-way cable networks.

If you installed the Cable Modem using the Ethernet port, make sure that your Ethernet adapter is operating correctly. Check the adapter in the

Device Manager in Windows to make sure it is listed and has no conflicts.

If you are unsure of how to do this, check your Windows documentation.

Make sure that TCP/IP is the default protocol in use by your system. See the section called Installing the TCP/IP Protocol for more information.

If you are using a cable line splitter so that you can connect the cable modem and a television at the same time, try removing the splitter and reconnecting your cables so that your Cable Modem is connected directly to your cable wall jack. Then try reconnecting to your Cable ISP

- **The Cable Status LED never stops blinking.**

Has the Cable Modem's MAC address been registered with your ISP? In order for your Cable Modem to be operational, you must call and have the ISP activate the modem by registering the MAC address from the label on the bottom of the modem.

Make sure that the Coax cable is firmly attached between the Cable Modem and the wall jack.

The signal from your cable company's equipment may be too weak or the cable line may not be properly attached to the Cable modem. If the cable line is properly connected to the Cable modem, call your cable company to verify whether or not a weak signal may be the problem.

- **All of LEDs on the front of my modem look right, but I still can't access the Internet**

If the Power LED, Link/Act, and Cable LEDs are on but not blinking, your cable modem is operating properly.

Try shutting down and powering off your computer and then turning it back on. This will cause your computer to re-establish communications with your Cable ISP.

Try pressing the Reset button on the back of your cable modem. Using an object with a small tip, push the button until you feel it click. Then try reconnecting to your Cable ISP.

Make sure that TCP/IP is the default protocol in use by your system. See the section called Installing the TCP/IP Protocol for more information.

- **The power on my modem goes on and off sporadically**

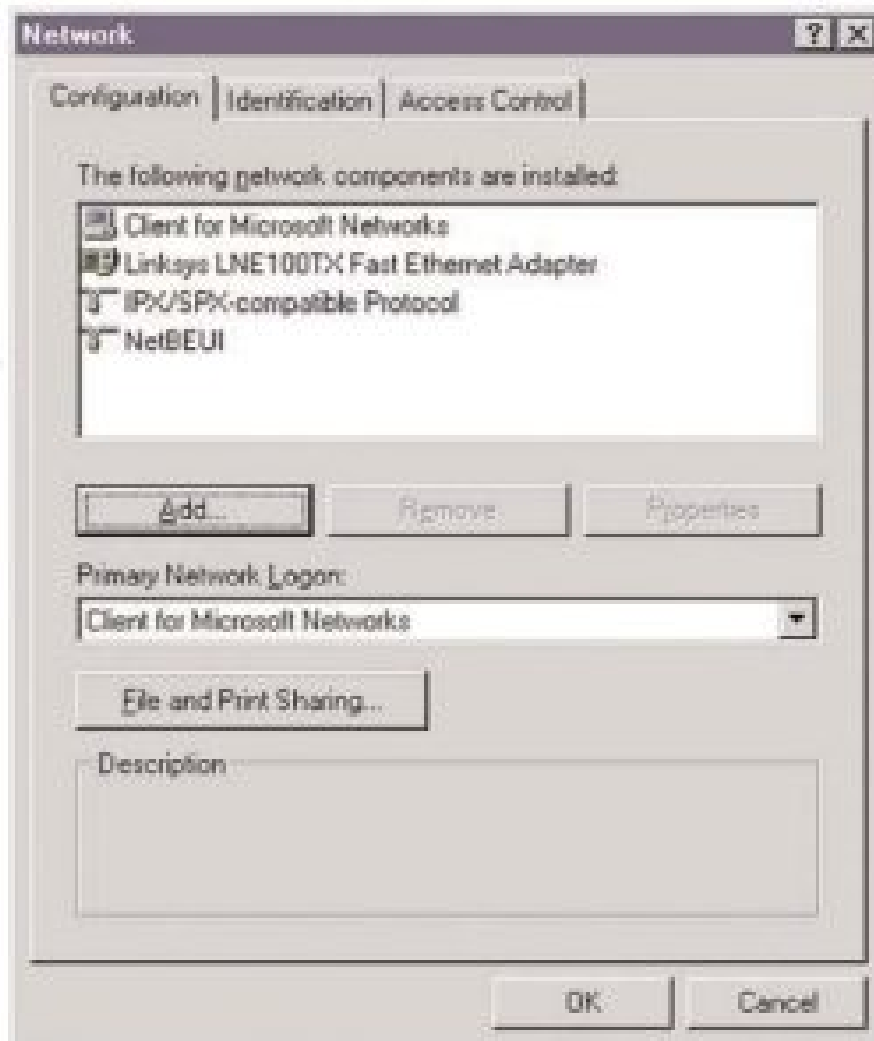
You may be using the wrong power supply. Check that the power supply you are using is the one that came with your Cable Modem.

## **Installing the TCP/IP Protocol**

1. Follow these instructions to install the TCP/IP Protocol on one of your PCs only after a network card has been

successfully installed inside the PC. These instructions are for Windows 95, 98 or Me. For TCP/IP setup under Microsoft Windows NT, 2000 or XP, please refer to your Microsoft Windows NT, 2000 or XP manual.

1. Click the Start button. Choose Settings, then Control Panel.
2. Double-click the Network icon. Your Network window should pop up. If there is a line called TCP/IP for your Ethernet Adapter already listed, there is no need to do anything else. If there is no entry for TCP/IP, select the Configuration tab.



3. Click the Add button.
4. Double-click Protocol.
5. Highlight Microsoft under the list of manufacturer
6. Find and double-click TCP/IP in the list to the right (below)



7. After a few seconds you will be brought back to the main Network window. The TCP/IP Protocol should now be listed.



8. Click OK. Windows may ask for original Windows installation files.  
Supply them as needed (i.e.: D:\win98, D:\win95, c:\windows\options\cabs.)
9. Windows will ask you to restart the PC. Click Yes.  
The TCP/IP Installation is complete.

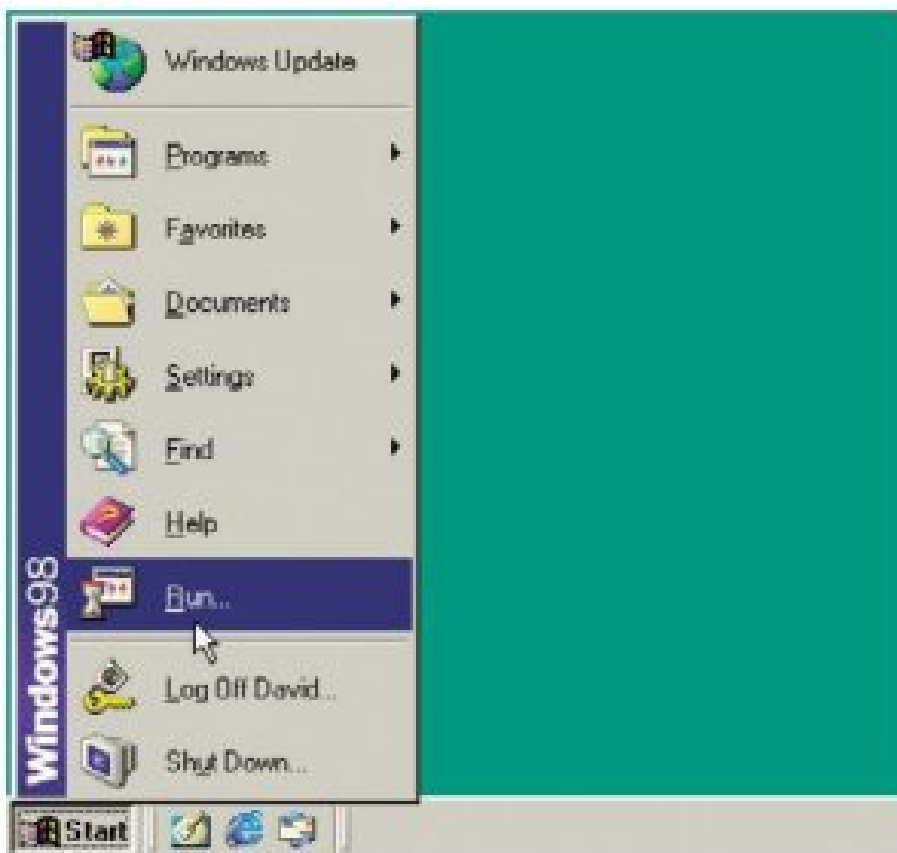
## Renewing Your PC's IP Address

Occsionally, your PC may fail to renew its IP address, which will keep it from connecting to your Cable ISP. When this happens, you will not be able to access the Internet through your Cable Modem. This is fairly normal, and

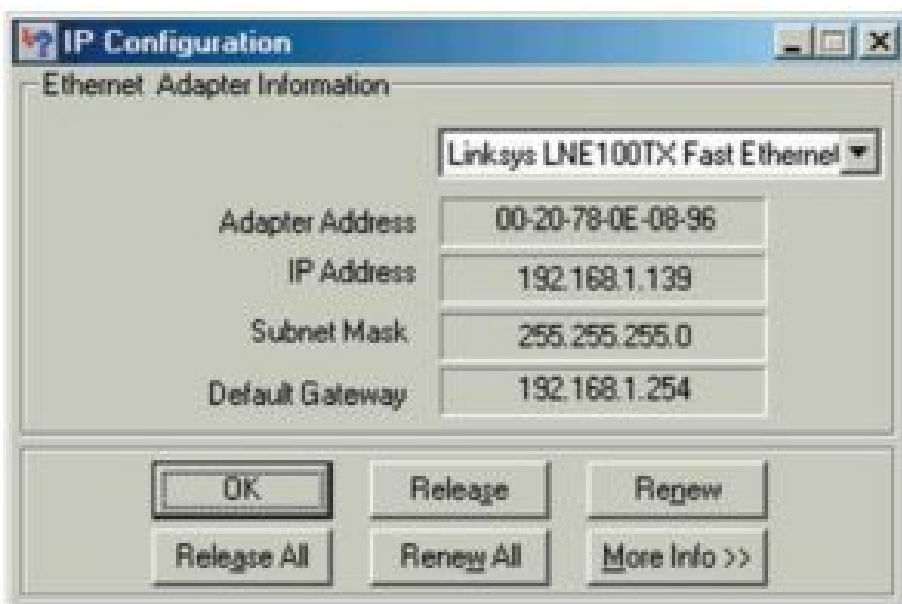
does not indicate a problem with your hardware. The procedure to correct this situation is simple. Follow these steps to renew your PC's IP address:

For Windows 95, 98, or Me users:

1. From your Windows 95, 98, or Me desktop, click the Start button, point to Run, and click to open the Run window.



2. Enter winipcfg in the Open field. Click the OK button to execute the program. The next window to appear will be the IP Configuration window.



3. Select the Ethernet adapter to show the IP address. Press Release and then press Renew to get a new IP address from your ISP's server.



4. Select the OK to close the IP Configuration window. Try your Internet connection again after this process.

**For Windows NT, 2000 or XP users:**

1. From your Windows NT or 2000 desktop, click the Start button, point to Run, and click to open the Run window (see Figure C-1.)
2. Enter cmd in the Open field. Click the OK button to execute the program. The next window to appear will be the DOS Prompt window.



3. At the prompt, type `ipconfig /release` to release the current IP address. Then type `ipconfig /renew` to get a new IP address.

```
C:\WDWT\System32\cmd.exe
Microsoft Windows [Version 5.00.2195]
(C) Copyright 1985-1999 Microsoft Corp.

C:\>ipconfig

Windows 2000 IP Configuration

Ethernet adapter Local Area Connection:

    Connection-specific DNS Suffix  . : 
    IP Address. . . . . : 192.168.1.137
    Subnet Mask . . . . . : 255.255.255.0
    Default Gateway . . . . . : 192.168.1.254

C:\>ipconfig /release

Windows 2000 IP Configuration

IP address successfully released for adapter "Local Area Connection"

C:\>ipconfig /renew

Windows 2000 IP Configuration

Ethernet adapter Local Area Connection:

    Connection-specific DNS Suffix  . : 
    IP Address. . . . . : 192.168.1.137
    Subnet Mask . . . . . : 255.255.255.0
    Default Gateway . . . . . : 192.168.1.254

C:\>
```

4. Type Exit and press Enter to close the Dos Prompt window. Try your Internet connection again after this process.

## Specifications

**Model No:** BEFCMU10 ver. 2

**Standards:** IEEE 802.3 (10BaseT), IEEE 802.3u (100BaseTX), DOCSIS 1.0 USB Specifications 1.1

**Downstream:**

**Modulation** 64QAM, 256QAM

**Data Rate** 30Mbps (64QAM), 43Mbps (256QAM)

**Frequency Range** 88MHz to 860MHz

**Bandwidth** 6MHz

**Input Signal Level** -15dBmV to +15dBmV

**Upstream:** Modulation QPSK, 16QAM

Data Rate (Kbps) 320, 640, 1280, 2560, 5120 (QPSK)

640, 1280, 2560, 5120, 10240 (16QAM)

**Frequency Range** 5MHz to 42MHz

Bandwidth 200, 400, 800, 1600, 3200KHz

Output Signal Level +8 to +58dBmV (QPSK),

+8 to +55dBmV (16QAM)

**Management:** MIB Group SNMPv2 with MIB II, DOCSIS MIB,

Bridge MIB

Security: Baseline Privacy 56-Bit DES with RSA Key Management

**Interface:** Cable F-type female 75 ohm connector

Ethernet RJ-45 10/100 Port

USB Type B USB Port

**LED:** Power, Link/Act, Send, Receive, Cable

## Environmental

**Dimensions:** 7.31" x 6.16" x 1.88"

(186 mm x 154 mm x 48 mm)

**Unit Weight:** 15.5 oz. (.439 Kg)

**Power:** External, 12V

**Certifications:** FCC Part 15 Class B, CE Mark

**Operating Temp:** 32°F to 104°F (0°C to 40°C)

**Storage Temp:** 4°F to 158°F (-20°C to 70°C)

**Operating Humidity:** 10% to 90%, Non-Condensing

**Storage Humidity:** 10% to 90%, Non-Condensing

## **Warranty Information**

BE SURE TO HAVE YOUR PROOF OF PURCHASE AND A BARCODE FROM THE PRODUCT'S PACKAGING ON HAND WHEN CALLING. RETURN REQUESTS CANNOT BE PROCESSED WITHOUT PROOF OF PURCHASE.

IN NO EVENT SHALL LINKSYS' LIABILITY EXCEED THE PRICE PAID FOR THE PRODUCT FROM DIRECT, INDIRECT, SPECIAL, INCIDENTAL, OR CONSEQUENTIAL DAMAGES RESULTING FROM THE USE OF THE PRODUCT, ITS ACCOMPANYING SOFTWARE, OR ITS DOCUMENTATION. LINKSYS DOES NOT OFFER REFUNDS FOR ANY PRODUCT.

LINKSYS OFFERS CROSS SHIPMENTS, A FASTER PROCESS FOR PROCESSING AND RECEIVING YOUR REPLACEMENT. LINKSYS PAYS FOR UPS GROUND ONLY. ALL CUSTOMERS LOCATED OUTSIDE OF THE UNITED STATES OF AMERICA AND CANADA SHALL BE HELD RESPONSIBLE FOR SHIPPING AND HANDLING CHARGES. PLEASE CALL LINKSYS FOR MORE DETAILS.

## **COPYRIGHT & TRADEMARKS**

Copyright© 2002 Linksys, All Rights Reserved. Etherfast is a registered trademark of Linksys. Microsoft, Windows, and the Windows logo are registered trademarks of Microsoft Corporation. All other trademarks and brand names are the property of their respective proprietors.

## **LIMITED WARRANTY**

Linksys guarantees that every Instant Broadband EtherFast® Cable Modem with USB and Etherfast Connection is free from physical defects in material and workmanship under normal use for one year from the date of purchase. If the product proves defective during this warranty period, call Linksys Customer Support in order to obtain a Return Authorization Number. BE SURE TO HAVE YOUR PROOF OF PURCHASE AND A BARCODE FROM THE PRODUCT'S PACKAGING ON HAND WHEN CALLING. RETURN REQUESTS CANNOT BE PROCESSED WITHOUT PROOF OF PURCHASE. When returning a product, mark the Return Authorization Number clearly on the outside of the package and include your original proof of purchase. All customers located outside of the United States of America and Canada shall be held responsible for shipping and handling charges.

IN NO EVENT SHALL LINKSYS' LIABILITY EXCEED THE PRICE PAID FOR THE PRODUCT FROM DIRECT, INDIRECT, SPECIAL, INCIDENTAL, OR CONSEQUENTIAL DAMAGES RESULTING FROM THE USE OF THE PRODUCT, ITS ACCOMPANYING SOFTWARE, OR ITS DOCUMENTATION. LINKSYS DOES NOT OFFER REFUNDS FOR ANY PRODUCT. Linksys makes no warranty or representation, expressed, implied, or statutory, with respect to its products or the contents or use of this documentation and all accompanying software, and specifically disclaims its quality, performance, merchantability, or fitness for any particular purpose. Linksys reserves the right to revise or update its products, software, or documentation without obligation to notify any individual or entity. Please direct all inquiries to:  
Linksys P.O. Box 18558, Irvine, CA 92623.

## **FCC STATEMENT**

This product has been tested and complies with the specifications for a Class B digital device, pursuant to Part 15 of the FCC Rules. These rules are designed to provide reasonable protection against harmful interference in a residential installation. This equipment generates, uses, and can radiate radio frequency energy and, if not installed and used according to the instructions, may cause harmful interference to radio communications. However, there is no guarantee that interference will not occur in a particular installation. If this equipment does cause harmful interference to radio or television reception, which is found by turning the equipment off and on, the user is encouraged to try to correct the interference by one or more of the following measures:

- Reorient or relocate the receiving antenna

- Increase the separation between the equipment or device
- Connect the equipment to an outlet other than the receiver's
- Consult a dealer or an experienced radio/TV technician for assistance UG-BEFCM10-041502A BW

## Contact Information

For help with the installation or operation of this product, contact Linksys Customer Support at one of the phone numbers or Internet addresses below.

**Sales Information** 800-546-5797 (1-800-LINKSYS)

**Technical Support** 800-326-7114 (tollfree from U.S. or Canada)

949-271-5465

**RMA Issues** 949-271-5461

Fax 949-265-6655

**Email** [support@linksys.com](mailto:support@linksys.com)

Web site <http://www.linksys.com>

<http://support.linksys.com>


FTP Site <ftp.linksys.com>



<http://www.linksys.com/>

© Copyright 2002 Linksys, All Rights Reserved

## Documents / Resources

	<p><a href="#">LINKSYS BEFCMU10 EtherFast Cable Modem with USB and Ethernet Connection</a> [pdf] User Guide</p> <p>BEFCMU10, EtherFast Cable Modem with USB and Ethernet Connection</p>
---	---