



# Linkstyle FK-S07 Smart Bluetooth Soil Moisture Sensor User Manual

[Home](#) » [LINKSTYLE](#) » Linkstyle FK-S07 Smart Bluetooth Soil Moisture Sensor User Manual 

Linkstyle FK-S07 Smart Bluetooth Soil  
Moisture Sensor User Manual



# Linkstyle

Linkstyle AFRA INDOOR  
Smart Bluetooth Soil  
Moisture Sensor Manual



Thank you

FOR YOUR PURCHASE

YOU MADE OUR DAY !

Dear customer,

Thank you so much for choosing LINKSTYLE products. We truly appreciate your business and are excited to have the opportunity to serve you.

If you need technical support or have any concerns regarding your order, before starting a return, don't hesitate to contact us at [support@linkstyle.life](mailto:support@linkstyle.life) or (+1) 888-419-4888 (voice mail). Our team is always here to help and will assist you within 24 hours.

Thank you so much!  
Linkstyle Team

#### WARRANTY CARD

Here at LINKSTYLE we strive to continue improving and providing quality & affordable products with exceptional customer service to all our customers and your feedback goes a long way in helping us achieve that.

Can you help us spread the love?

If you are satisfied with the product you have received, please write us a review at your convenience. We appreciate your feedback and support!



Please keep this card to be qualified for 1 year guarantee Lifetime technical support

Contact Us:



[Support@linkstyle.life](mailto:support@linkstyle.life)



(+1) 888 419 4888 (Voice Mail)

For the latest version of the manual:



For the setup video



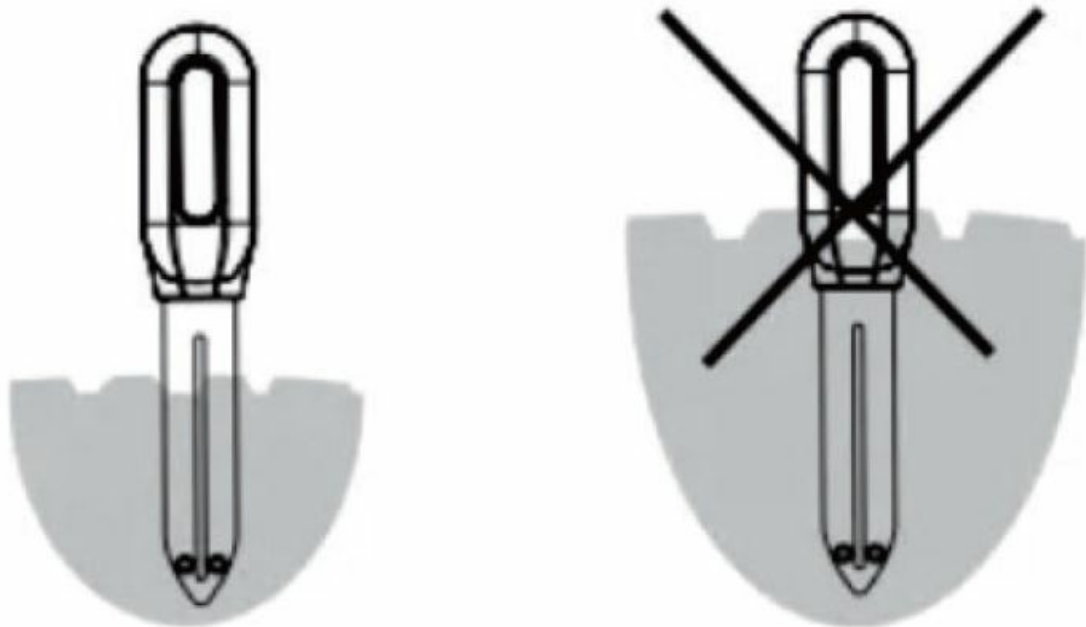
<https://linkstyle.life/afraB>

If you need any support, don't hesitate to reach out to us at:

email: [support@linkstyle.life](mailto:support@linkstyle.life)

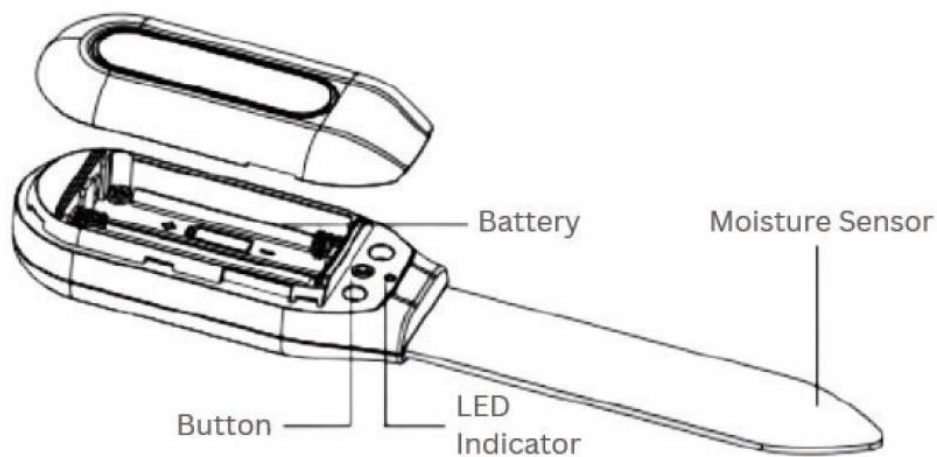
voicemail: 1-888-419-4888

#### **A. Notice Before Use**



- Indoor use only. This device is NOT waterproof.
- Be sure to clean the outer surface of the device before use.
- Insert the soil sensor into the soil for more than 2/3 of its length for best accuracy.
- Do NOT bury the plastic part of the device in the soil.
- The sensor readings will update 1-2 minutes after inserting it into the soil.

## B. Product Overview



This device monitors air temperature and soil moisture to help you better care for your indoor plants.

## C. Setup & Installation

Install the Linkstyle app

Scan the QR code below to download and install the Linkstyle app. Register a new account on the app ,f you do not have one.



\*Alternatively, you can also search for “Linkstyle,-, the Apple App Store or Google Play Store to the app

### C. Setup & Installation (Continued)

#### \*\*\*Important Note:

When registering an account in the Linkstyle app, be sure to set the region to United States of America.

### C. Setup & Installation (Continued)

#### Prepare device for setup

Pull open the battery compartment and install 2 x AAA batteries.

Press and hold the Button for 6 seconds until the LED indicator light flashes green. This puts the device in pairing mode.

#### Add device to Linkstyle a pp

If you are adding the device to the Linkstyle app directly via Bluetooth without a Nexohub, follow the steps starting on page xxxxxxxx.

If you are adding the device to the Linkstyle app through a Nexohub gateway, follow the steps starting on page xxxxxxxxxxxx.

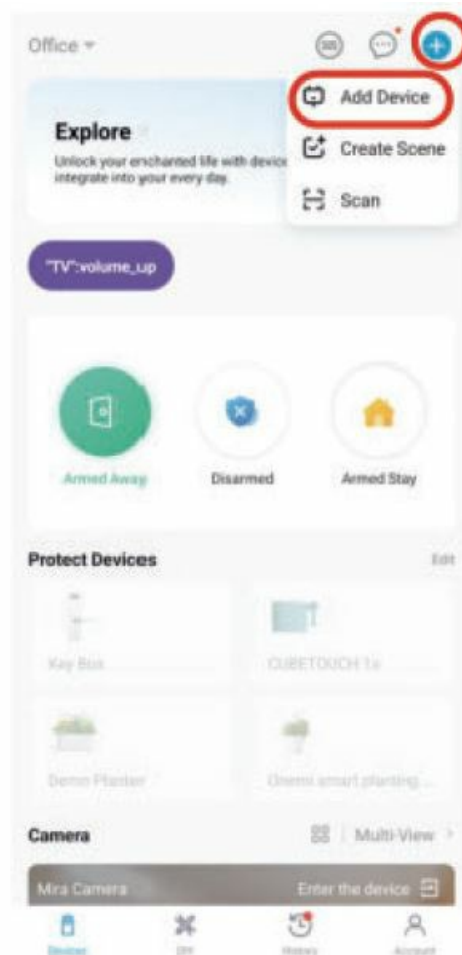
### C. Setup & Installation (Continued)

#### Add device to Linkstyle app – Bluetooth

Step 1: In the Devices page of the Linkstyle app, tap the”+” button on the top right corner and tap “Add Device”

Step 2: The app will automatically scan for devices nearby in setup mode. Once the the device is found, tap its

icon and follow the onscreen instructions to complete setup.

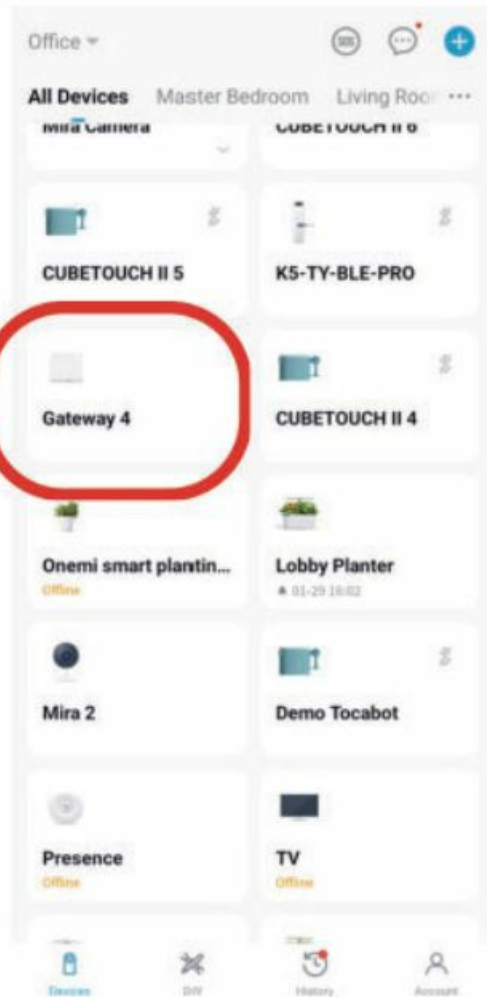


### C. Setup & Installation (Continued)

#### Add device to Linkstyle app – Nexohub

Make sure to have a Nexohub added to your Linkstyle app and online before adding this device.

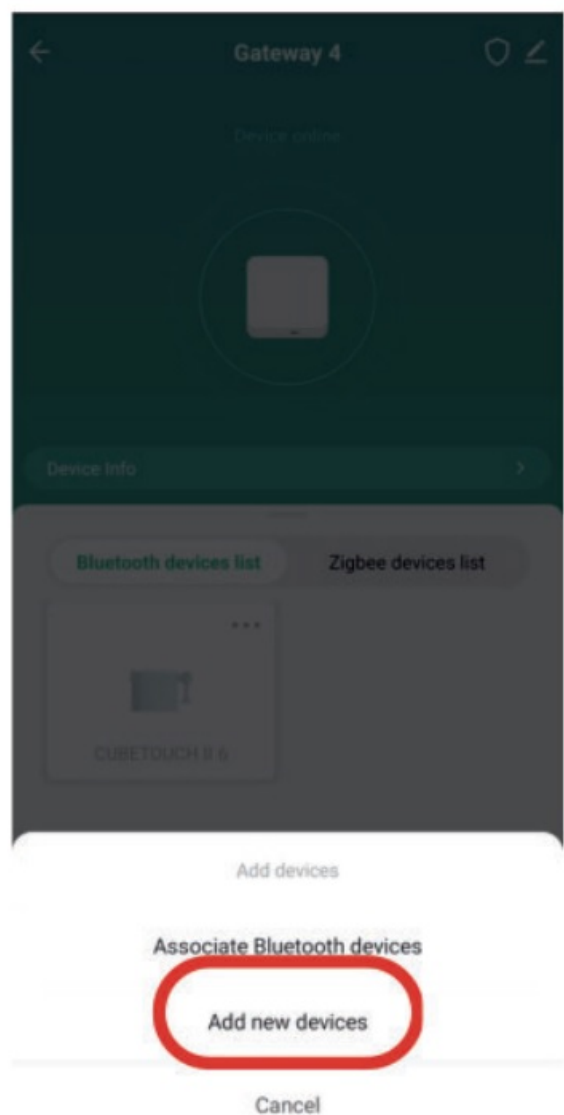
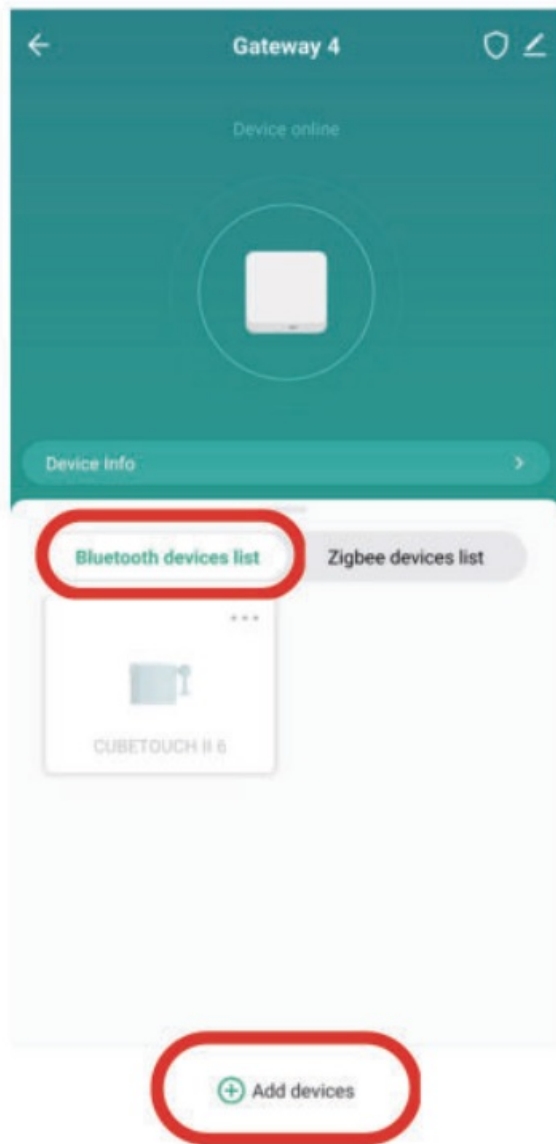
Step 1: In the Devices page of the Linkstyle app, find and tap the Nexohub.



### C. Setup & Installation (Continued)

Add device to Linkstyle app – Nexohub

Step 2: Make sure the “Bluetooth devices list” is selected, and tap “Add devices”, then “Add new devices”



### C. Setup & Installation (Continued)

#### Add device to Linkstyle app – Nexohub

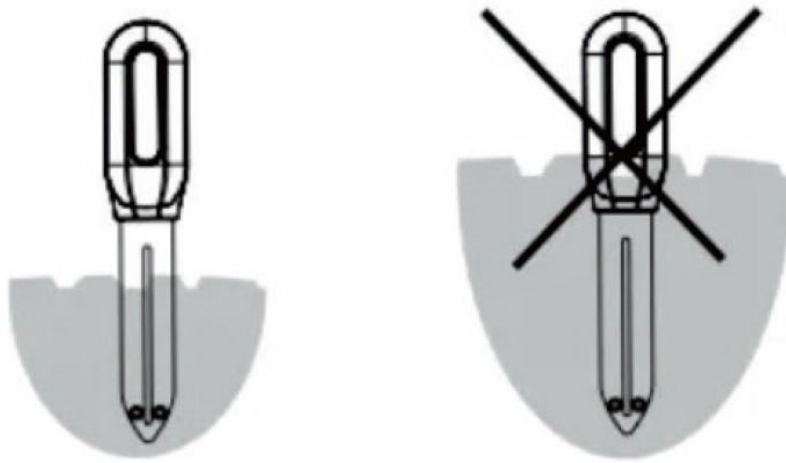
Step 3: The app will automatically scan for devices nearby in setup mode. Once the device is found, tap “Done” and follow the onscreen instructions to complete setup.

#### Insert device into planter pot

Insert the soil sensor portion of the device at least 2/3 of the way into the soil. Do NOT insert it up to the plastic portion that contains the batteries.

Wait for 1-2 minutes for the sensor reading to update in the Linkstyle app.





#### D. Technical Specifications

Connectivity	Bluetooth 4.1
Power Source	2 x AAA battery
Soil Moisture	0 to 100%
Air Temperature	14°F to 140°F (-10°C to 60°C)

#### E. Warranty & Support

Thank you for choosing Linkstyle. We are dedicated to providing Innovative and convenient products for an enhanced lifestyle. This Product Warranty Agreement ("Warranty") applies to Items purchased directly from Linkstyle.

##### Warranty Duration:

All products sold by Linkstyle come with a standard one (1) year warranty from the date of purchase, unless stated otherwise.

##### Warranty Coverage:

During the warranty duration, Linkstyle assures that the product will be free from defects in materials and workmanship when used under regular conditions.

##### Exclusions:

This warranty does not cover the following:

- Damages due to misuse, neglect, or deviation from user instructions.
- Damages from natural disasters such as floods, fires, or accidents .
- Unauthorized repairs, modifications. or disassembling.
- Cosmetic damages like scratches, dents, or broken pans.

#### E. Warranty & Support (Continued)

##### Filling Warranty Claim:

- Reach out to Linkstyle Customer Support providing your proof of purchase, product details, and a comprehensive description of the Issue.
- Our team will evaluate the claim and, if required, provide return shipping instructions.
- If the product is confirmed defective, Linkstyle, at its discretion, will repair or replace the item.

**Limitation of Liability:**

Linkstyle's liability is strictly limited to the repair or replacement of the product. Under no circumstances will Linkstyle be liable for any indirect, incidental, or consequential damages. The total liability shall not exceed the original purchase price of the product.

**Warranty Transferability:**

This Warranty is solely for the original purchaser and cannot be transferred.

**Governing Law:**

This Warranty is governed by the laws of the country/state of purchase.

**Disclaimer:**

Apart from what's stated here, no other express or implied warranties apply, including implied warranties of merchantability or suitability for a specific purpose.

For any queries or concerns regarding our products or this Warranty, reach out to us at [support@linkstyle.life](mailto:support@linkstyle.life).

Apple and Apple logos are trademarks of Apple, Inc., registered in the U.S. and other countries.

App Store is a service mark of Apple, Inc.

Amazon, Alexa, and all related logos are trademarks of Amazon.com Inc. or its affiliates.

Google and Google Play are trademarks of Google LLC.

Other third-party brands and names are the property of their respective owners.

**FCC Warning:**

This equipment has been tested and found to comply with the limits for a Class B digital device, pursuant to part 15 of the FCC Rules. These limits are designed to provide reasonable protection against harmful interference in a residential installation. This equipment generates, uses and can radiate radio frequency energy and, if not installed and used in accordance with the instructions, may cause harmful interference to radio communications. However, there is no guarantee that interference will not occur in a particular installation. If this equipment does cause harmful interference to radio or television reception, which can be determined by turning the equipment off and on, the user is encouraged to try to correct the interference by one or more of the following measures:

- Reorient or relocate the receiving antenna.
- Increase the separation between the equipment and receiver.
- Connect the equipment into an outlet on a circuit different from that to which the receiver is connected.
- Consult the dealer or an experienced radio/TV technician for help.

Caution: Any changes or modifications to this device not explicitly approved by manufacturer could void your authority to operate this equipment.

This device complies with part 15 of the FCC Rules. Operation is subject to the following two conditions:

(1) This device may not cause harmful interference, and (2) this device must accept any interference received, including interference that may cause undesired operation.

This equipment complies with FCC radiation exposure limits set forth for an uncontrolled environment. This equipment should be installed and operated with minimum distance 0cm between the radiator and your body.


---

## Contents

### [1 Documents / Resources](#)

#### [1.1 References](#)

## Documents / Resources

	<a href="#">Linkstyle FK-S07 Smart Bluetooth Soil Moisture Sensor</a> [pdf] User Manual FK-S07 Smart Bluetooth Soil Moisture Sensor, FK-S07, Smart Bluetooth Soil Moisture Sensor, Bluetooth Soil Moisture Sensor, Soil Moisture Sensor, Moisture Sensor, Sensor
---	---

## References

- [User Manual](#)

[Manuals+](#), [Privacy Policy](#)

This website is an independent publication and is neither affiliated with nor endorsed by any of the trademark owners. The "Bluetooth®" word mark and logos are registered trademarks owned by Bluetooth SIG, Inc. The "Wi-Fi®" word mark and logos are registered trademarks owned by the Wi-Fi Alliance. Any use of these marks on this website does not imply any affiliation with or endorsement.