

LinknLink Emotion Wi-Fi Radar Motion Sensor



LinknLink Emotion Wi-Fi Radar Motion Sensor User Guide

[Home](#) » [LinknLink](#) » LinknLink Emotion Wi-Fi Radar Motion Sensor User Guide 

Contents

- 1 [LinknLink Emotion Wi-Fi Radar Motion Sensor](#)
- 2 [OVERVIEW](#)
- 3 [INSTALLATION STEPS](#)
- 4 [Power On](#)
- 5 [LOG IN TO THE APP](#)
- 6 [ADD DEVICE](#)
- 7 [USE EMOTION SENSOR](#)
- 8 [QUERY DATA WITH MODBUS TCP](#)
- 9 [USE ALEXA / GOOGLE HOME](#)
- 10 [HOME AUTOMATION](#)
- 11 [FCC statement](#)
- 12 [Documents / Resources](#)
 - 12.1 [References](#)



LinknLink Emotion Wi-Fi Radar Motion Sensor



Linknlink Pty Ltd

- Manufacturer: Hangzhou Linknlink Technology Co., Ltd.
- Website: www.linknlink.com
- Service & Support: support@linknlink-iot.com
- Address: Room 2502, Building A, 57 Jiang' er Road,
- Binjiang, Hangzhou, 310052, P.R. China

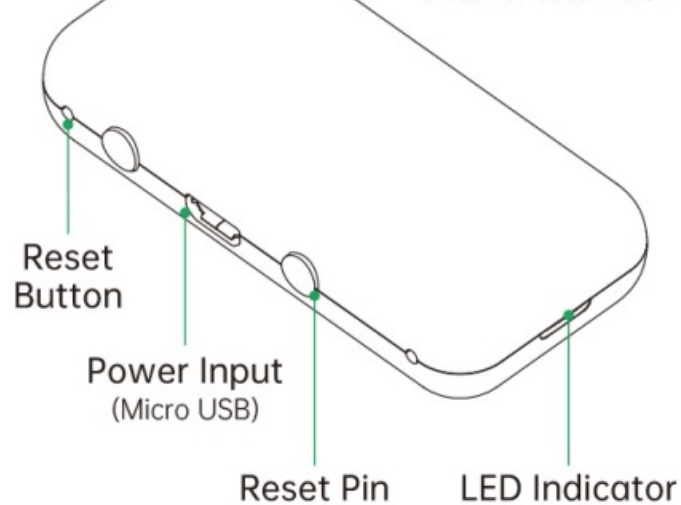
OVERVIEW

What's Include

- eMotionxl,
- USB cable xl,
- Reset pinx2,
- Double side tapexl,
- User guidexl.

eMotion

size: 70×33.5×18.5 mm



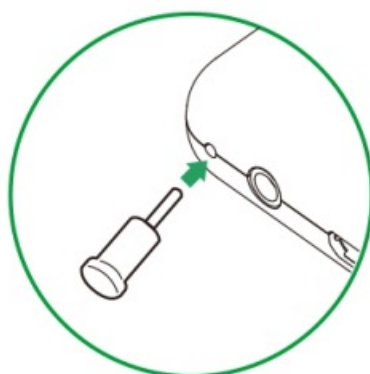
USB Cable



overall length: 1000±50 mm

Status	Indication
Flashes intermittently	Device is in setup mode and waiting to be added
Flashes slowly then off	Device is being set up and added to network
Flashes slowly continuously	Device is failed to connect to network or disconnected from network

Reset for Setup

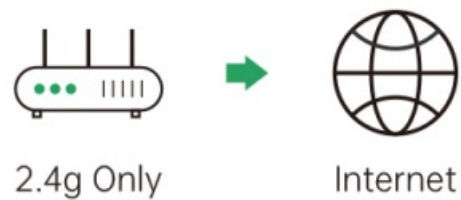


When the device is not in setup mode, take out the reset pin and use it to press and hold the Reset Button for 5s until the LED indicator flashes intermittently.

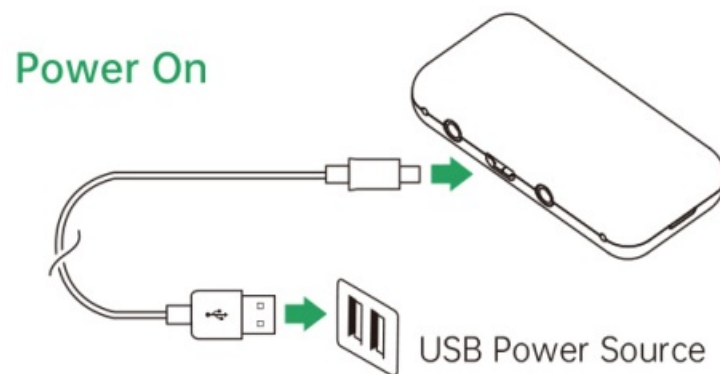
INSTALLATION STEPS

Requirements

Wi-Fi Router with Internet Access



Power On



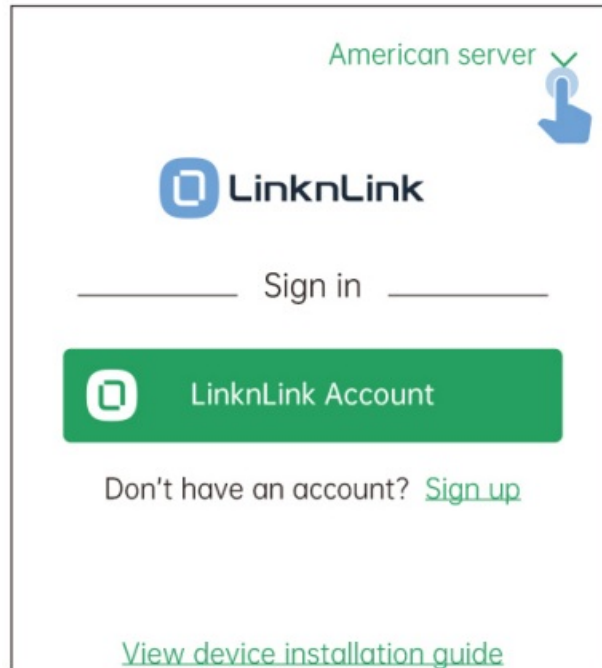
- A smartphone or tablet running iOS 9.0 / Android 5.1 or above.
- A 2.4GHz Wi-Fi network with Internet access.
- Make sure the device is on and the blue LED indicator is flashing intermittently.

step 2 Get the App



- Connect your smartphone to your home Wi-Fi network (2.4GHz only).
- Open your phone's camera, point it at the QR code, download the latest "Linknlink" APP from the App Store or Google Play, and install it on your smart phone.

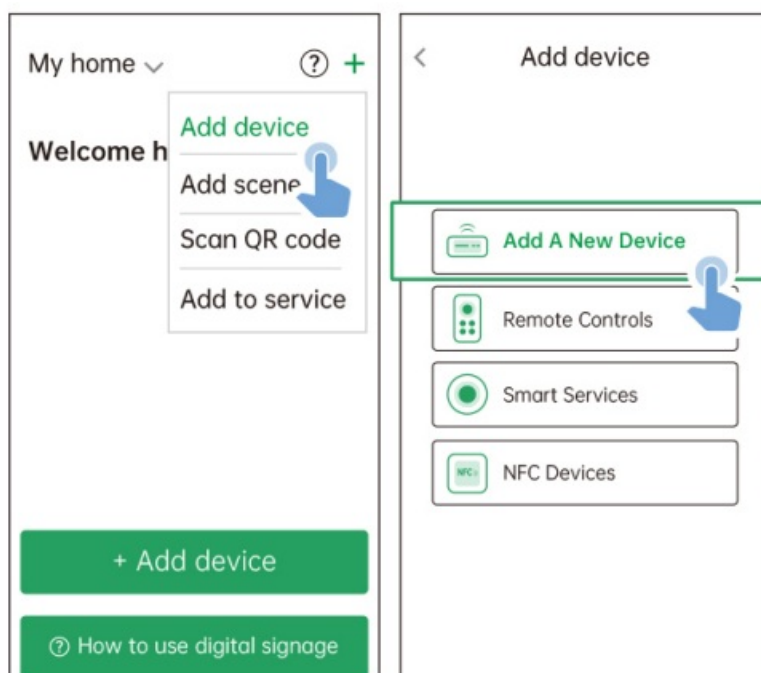
LOG IN TO THE APP



- Open the Linknlink APP, click on the server selection in the top right corner, then
- click on "Linknlink Account" and log into your cloud account.
- If you don't have an account, click "Sign up" to create a new one

ADD DEVICE

step1 Add eMotion



- Power on the eMotion, making sure the indicator light is Flashing intermittently in blue.

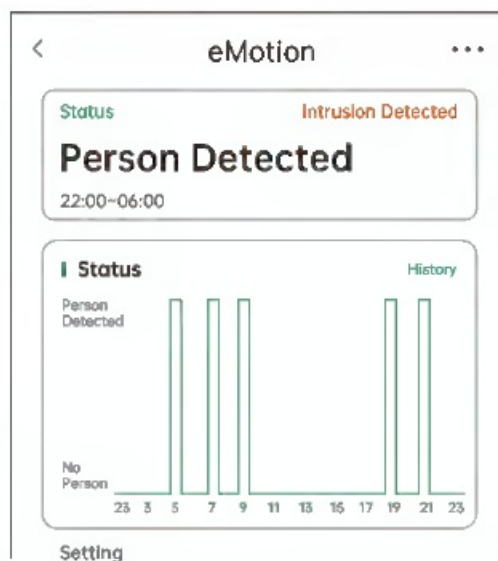
- Turn on your phone's Bluetooth service, click on the "+" in the top right corner –
- "Add device" – "Add a new device" – "eMotion series device" – "eMotion".
- The APP will start to automatically scan for nearby eMotion devices, which may take up to 10 seconds.

step Connect eMotion to Wi-Fi

- Select your home Wi-Fi network, enter the password and click "Connect now", the LED indicator will flash slower and then turn off.
- Device is successfully connected.
- Choose a room and name the device

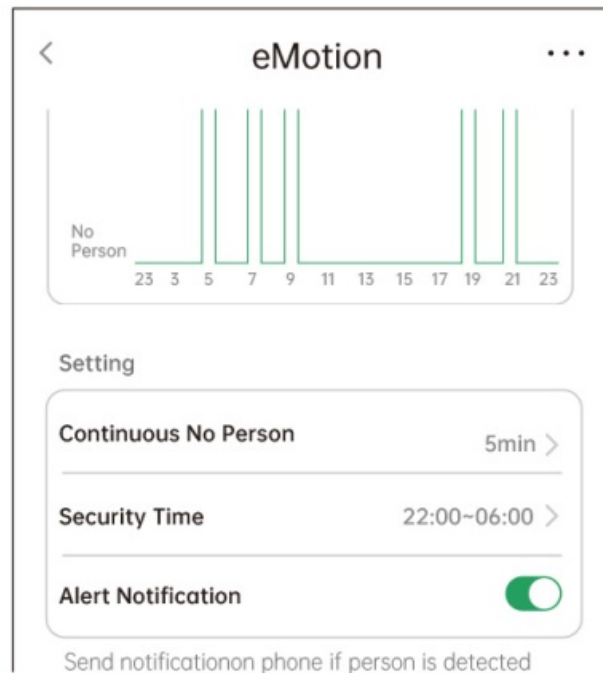
USE EMOTION SENSOR

step View Status & History



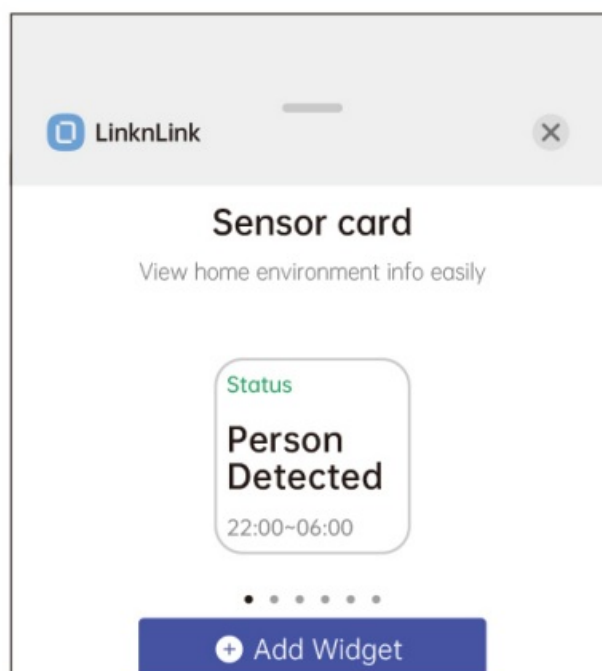
- In the Linklink App, click on the eMotion device, you can check the real-time occupancy status (Person Detected, No Person or Continuous No Person) and quick history for last 24 hours.
- You can click “History Records” to view previous history for last 1 month.
- You can click” ... “> “Export Data” and input your email to get a full history record.

step2



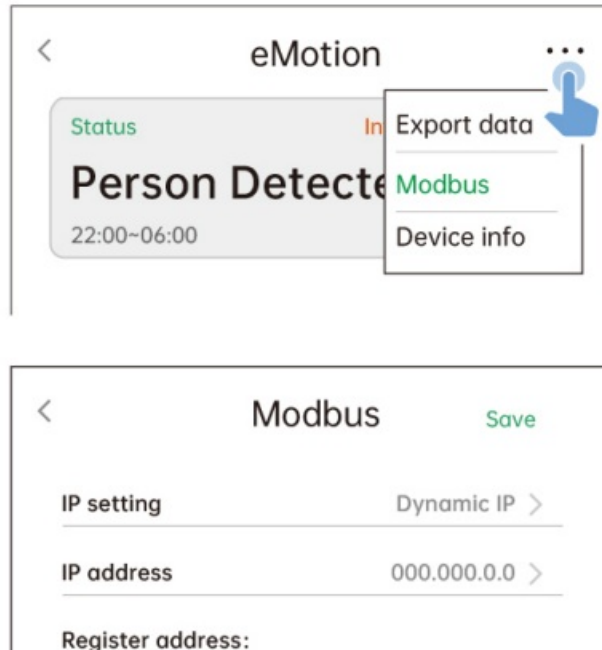
- You can set the “Security Time” and enable “Alert Notification” for intrusion alert.
- A warning sign will be displayed on device page, and you will also receive a push notification if person is detected during the security time.

step 3 Add Widget on Phone



- For Android/iOS widgets, on the phone, firstly find and select the Linklink App widget.
- Then from the device card, select the human radar sensor.
- After adding the widget to the phone's home screen, long press on it to configure.

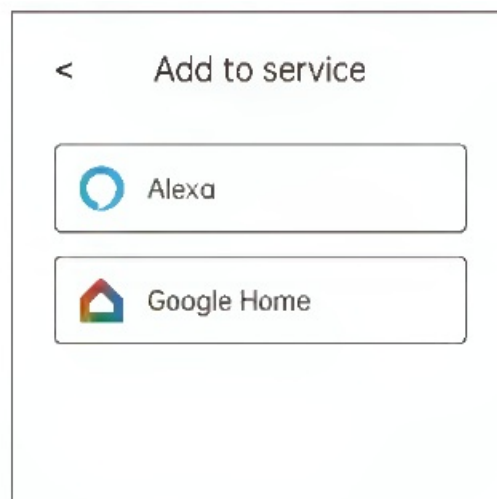
QUERY DATA WITH MODBUS TCP



- Click" ... "> "Modbus" to set a fixed IP address for eMotion and find Modbus register address.
- Use your custom software to query current sensor status via Modbus TCP protocol

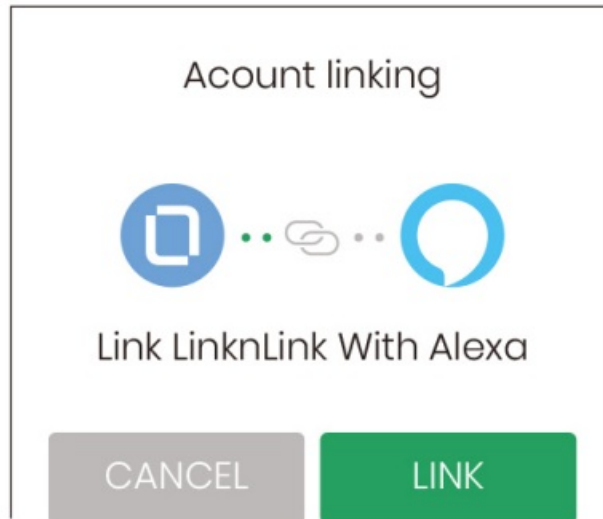
USE ALEXA / GOOGLE HOME

step 1 Link to Linklink skill



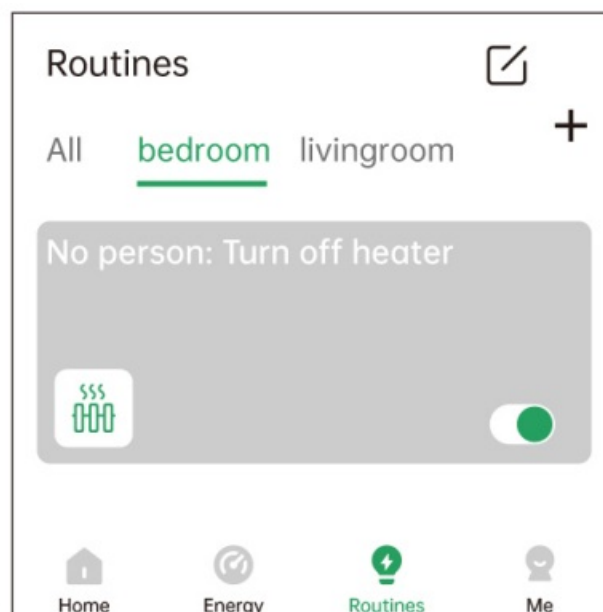
- If you're already logged into the Alexa or Google Home APP, you can now directly link to the Linklink skill.
- On the App homepage, click on the "+" in the top right corner and select "Add Voice Assistant".
- Select "Alexa" or "Google Home", then click "Link Now"

step Complete and Discover Devices



- You will be redirected to the Alexa / Google Home APP and click “Link” to complete this process.
- After successfully discovering the device, you will be able to control the device through the Alexa / Google Home APP or speaker.

HOME AUTOMATION



- Use the “Routines” in LinknLink App, the sensors in eHub can be used as trigger conditions, and the remote control can be used as execution device. Ex. turn off the heater when the room is continuously unoccupied.
- Similarly, use the “Routine” in Alexa/ Google Home to set up the automation you need.


FCC statement

EXPOSURE STATEMENT Contains FCC ID: 2A9BE-LL8720-P This device complies with part 15 of the

FCC rules. Operation is subject to the following two conditions:

1. This device may not cause harmful interference, and
2. this device must accept any interference received, including interference that may cause undesired operation.

Documents / Resources

	LinknLink Emotion Wi-Fi Radar Motion Sensor [pdf] User Guide Emotion Wi-Fi Radar Motion Sensor, Emotion, Wi-Fi Radar Motion Sensor, Radar Motion Sensor, Motion Sensor, Sensor
-----------------------------------------------------------------------------------	---------------------------------------------------------------------------------------------------------------------------------------------------------------------------------------------------

References

- [User Manual](#)

Manuals+ Privacy Policy

This website is an independent publication and is neither affiliated with nor endorsed by any of the trademark owners. The "Bluetooth®" word mark and logos are registered trademarks owned by Bluetooth SIG, Inc. The "Wi-Fi®" word mark and logos are registered trademarks owned by the Wi-Fi Alliance. Any use of these marks on this website does not imply any affiliation with or endorsement.