

Linkind LC09002 Wi-Fi Smart Plug Instruction Manual

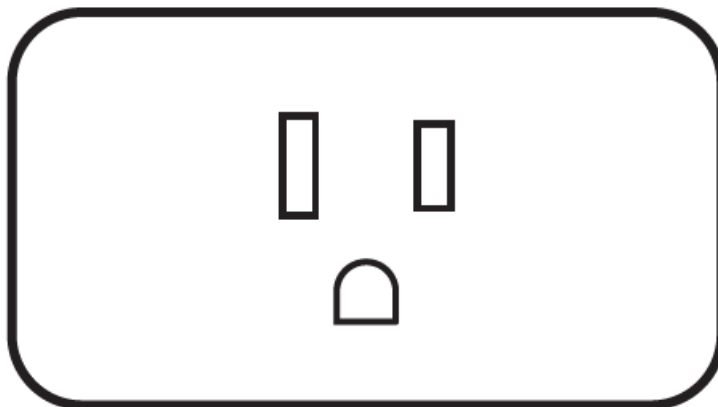
[Home](#) » [Linkind](#) » Linkind LC09002 Wi-Fi Smart Plug Instruction Manual 

Contents

- [1 Linkind LC09002 Wi-Fi Smart Plug](#)
- [2 LED Indicator](#)
- [3 Installation Instructions](#)
- [4 The method of add device to Aidot App](#)
- [5 TROUBLESHOOTING](#)
- [6 Frequently Asked Question](#)
- [7 Documents / Resources](#)
 - [7.1 References](#)

Linkind

Linkind LC09002 Wi-Fi Smart Plug



Scan the QR code to watch the How-To videos



Function Introduction



**App
control**



**Voice
control**



**Timing &
countdown**

LED Indicator

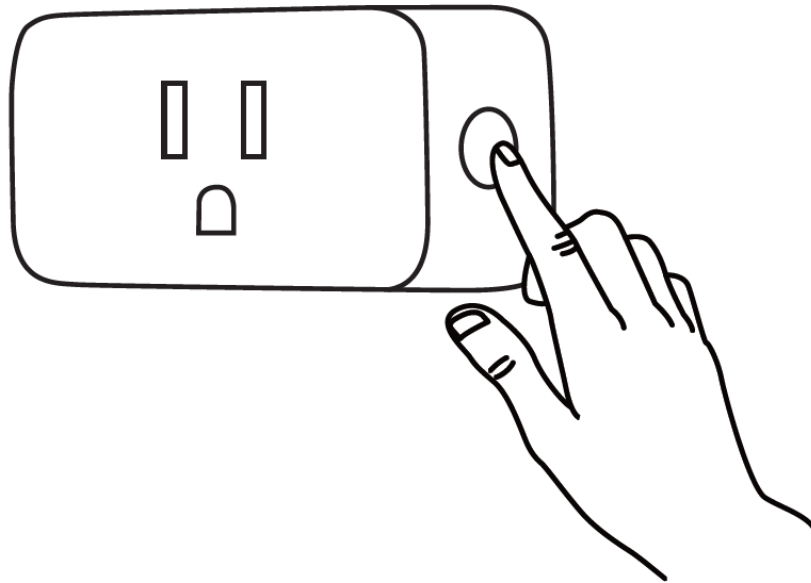
Under normal working state:
LED indicator is solid green-turn on;
LED indicator is off -turn off.

Status	Behavior
Green and Orange scrolling blinking	To be configured status
Quick Blinking Orange	Connecting to the network
Solid Green	Connected to the network
	The smart plug is turned on
Solid Red	Connected failed
Quick Blinking Red	Restore factory default settings
OFF	The smart plug is turned off

Installation Instructions

1. Power on the plug.

2. Press and hold the button (>5s). the distribution network can be restarted.
3. Press and hold the button (> 10s). restore the plug to factory default settings.

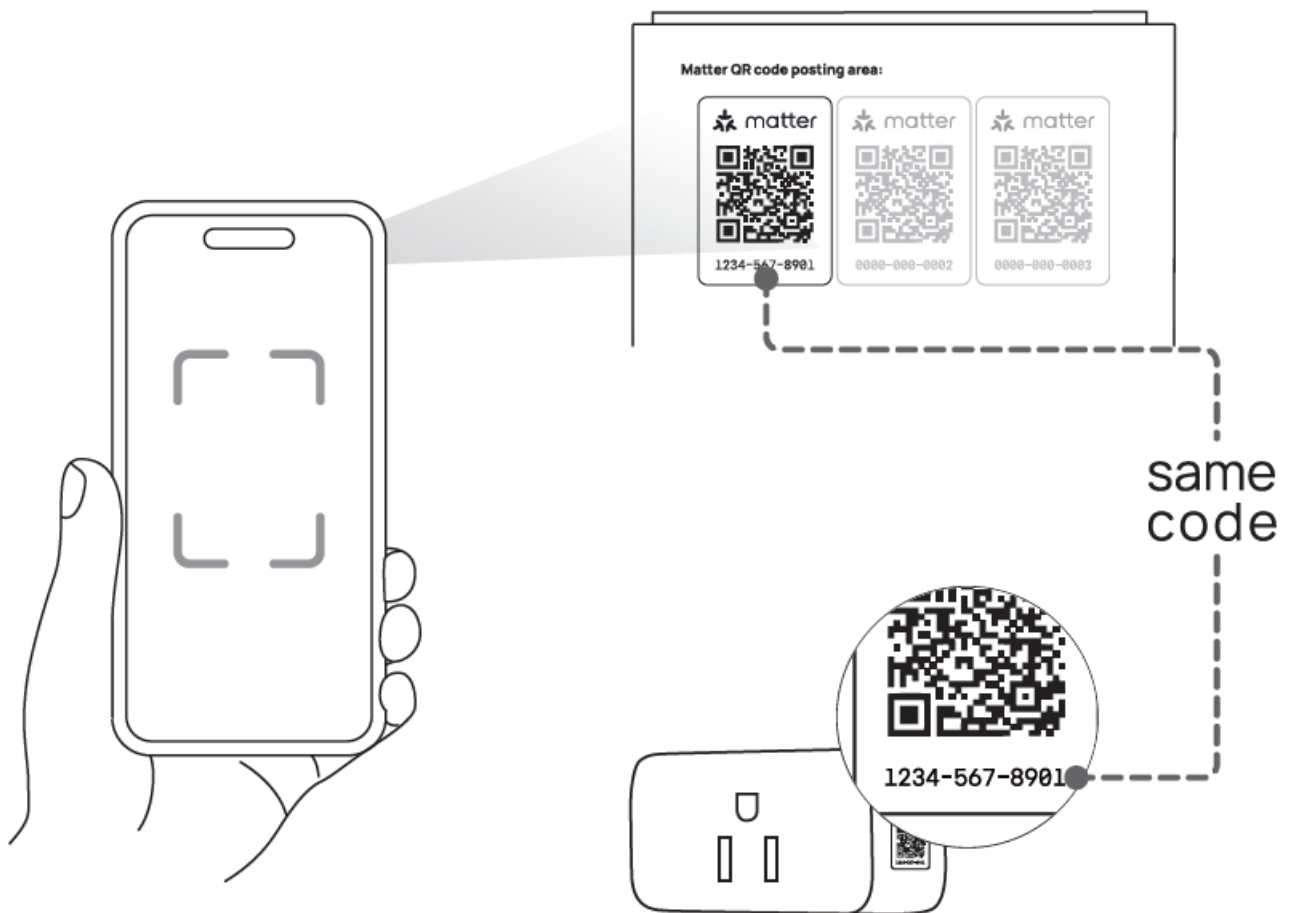


The method of add device to Alexa, Apple Home, Google Home or SmartThings.

A Matter-supported controller and its related smart home App are required for setup. e.g. Echo Device and Alexa App, Apple Home Pod and Apple Home App, Nest Device and Google Home, SmartThings Hub and SmartThings App.

Before getting started, Ensure your mobile device and Matter supported controller are connected to your router's 2.4 GHz Wi-Fi. If you are unsure whether your router broadcasts a 2.4 GHz Wi-Fi connection, please check with the maker or provider of your router.

1. Download the App such as Alexa, Google Home, Apple Home, Smart Things.
2. Turn on Bluetooth on your phone and power on the plug.
3. Please use App scanning function to scan the QR code or manually input the Pairing code below the QR code.
4. Note that the matter QR code on the scanning sticker must be the same as that on the device to be connected to the Internet. As shown in the diagram below.



The method of add device to Aidot App

1. Scan the QR code below or search for "AiDot" in App Store or Google Play.



Google, Google Home and Google Play are trademarks of Google LLC.

2. Create an account and sign in. Tap + to add the "smart plug".



3. Follow the instructions on the App.

Note: Please turn on Bluetooth and location.

TROUBLESHOOTING

Refer to the following and you can resolve most setup issues

1. Please enable IPv6 Internet connection, please contact our friendly customer service representative for assistance.
2. Ensure your phone and Matter hub are both connected to a stable 2.4 GHz Wi-Fi network, and that it has internet access during the setup process.
3. Restart your smartphone and clear the cache of the smart home App.
4. Make sure the firmware of your Matter hub (or called Matter controller which is required for providing ecosystem that could be paired with Matter-certified device.) and smart home App is updated to support Matter.
5. Power cycle the Matter-enabled device.
6. Matter setup mode is active for 15 minutes after the device is powered on, if this time period has expired, you will need to power cycle the matter-enabled device to restart the clock.
7. If the Matter-enabled device has already been added to another ecosystem, you will need to get a new setup code for pairing. If you fail to set up my connected Matter device with another smart home system, please refer to the following troubleshooting steps:
 - If your Matter-enabled device does not show up or the pairing code cannot be created on the App where pairing has been completed. Please reboot your Matter-certified device.
 - Don't create pairing codes in Apps of multiple smart home systems in a row. If the first created pairing code is not used or has not expired, the subsequently created codes are invalid.
 - Make Sure to complete the setup process before the matter code expires: Notes: In Google Home, the code will expire 3 minutes after it is generated. In Apple Home, the code will expire 5 minutes after it is generated. In Alexa, the code will expire 15 minutes after it is generated. In Samsung SmartThings, the code will expire 15 minutes after it is generated.
 - Please ensure that the pairing code page of the app remains open when you enter the numeric code (or scan the QR code) for your Matter device to pair with another App.

If you still cannot connect your device, reboot your Matter Hub and Smart Device, clear the cache of the Apps, and restart your phone. Then try to set up the device normally.

Note: Before you set up your connected Matter device with Alexa, please upgrade the software version of

your Alexa Echo to 8624646532 or later.

Frequently Asked Question

1. Scan code prompt error I no response?

Please confirm whether the App software version meets the minimum version requirements.

2. Can't scan the QR code on the device?

The QR code may not be scanned when the device is turned on. you can try to scan the QR code on the instruction manual.

3. Prompt that the device cannot be found?

1. Network distribution for the first time (the device is in the factory state): please power on the device again, and confirm that the device is in the factory state. Confirm that the power-on time does not.
2. Multi-ecological distribution network (the device has been configured and shared with other hub and App): please confirm that all devices are in the same office in the local area network (connected to the same router), and the device pairing mode has been turned on (see the above share to other ecology step).

4. Failed to add device?

1. Please confirm that the mobile phone using the App is connected to 2.4GHz Wi-Fi and the hub(controller) is also connected to the same router.
2. You can try to restart the hub/controller, App or mobile phone.

5. Device shows offline?

1. Please try controlling the device to see if it responds normally
2. If the device does not respond, please try to power on the device again, and wait for 2 minutes to check whether the device is back online.

6. How to reset the device?

1. Press and hold for the button 10 seconds restore the plug to factory default settings.
2. After resetting the device, the device will still be displayed on the App.

7. Appears offline after adding a device?

The network may be unstable, you can try to manually refresh.

8. How to get support and extend the warranty?

1. Email: service@linkind.com
2. support Phone: 1-877-770-5727 (Monday-Friday 9:00 am-5:00 pm)
3. warranty extend: www.linkind.com/registrationb

Cautions

To avoid personal injury and/or possible product damage.the following cautions must be followed:

1. The smart plug is for indoor use only, keep it away from moisture when in use.
2. Pull the plug before clean the product. Please do not use any liquid, spray cleaner o wet cloth on it.
3. To prevent early failure.smart plug should only be installed in operating temperature ranging between: 0°C and +40°C(32°F and 104°F).
4. Put the smart plug in proper condition and keep it out of reach of children.
5. The total power of the appliances electrically connected could not be bigger than the maximum one of the smart plug.

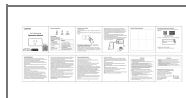
6. Do not disassemble or reinstall the smart plug, otherwise it may cause security risks.

SPRING SUNSHINE TECHNOLOGY CO., LIMITED

FLAT/RM 01-04, 24/F, FU FAI COMMERCIAL CENTRE,
27 HILLIER STREET. SHEUNG WAN, HK
Manufacturer: Leedarson IoTTechnology Inc.
Address: No.1511, 2nd Fanghu North Rd, Huli
District, Xiamen, China

- 1877-770-5727 (Mon.-Fri. 9 to 5 PST)
- <http://www.linkind.com>
- service@linkind.com

Documents / Resources



[Linkind LC09002 Wi-Fi Smart Plug](#) [pdf] Instruction Manual
LC09002, LC09002 Wi-Fi Smart Plug, Wi-Fi Smart Plug, Smart Plug, Plug

References

- [User Manual](#)