

Link2Home

Link2Home EM-PU-150E
Pop Up Socket Induction
Charger



Link2Home EM-PU-150E Pop Up Socket Induction Charger Instruction Manual

[Home](#) » [Link2Home](#) » Link2Home EM-PU-150E Pop Up Socket Induction Charger Instruction Manual 

Contents

- [1 Link2Home EM-PU-150E Pop Up Socket Induction Charger](#)
- [2 Product Information](#)
- [3 Product Usage Instructions](#)
- [4 Installation Instructions](#)
- [5 Technical specifications](#)
- [6 FCC Statement](#)
- [7 1 YEAR LIMITED WARRANTY](#)
- [8 Documents / Resources](#)
 - [8.1 References](#)
- [9 Related Posts](#)

Link2Home

Link2Home EM-PU-150E Pop Up Socket Induction Charger



Product Information

Specifications

- Compliance: Industry Canada's license-exempt RSS
- Operation Conditions: Subject to two conditions

Product Usage Instructions

Compliance with Industry Canada's license-exempt RSS:

Ensure that the device is used in accordance with Industry Canada's regulations for license-exempt operation.

Operating Conditions

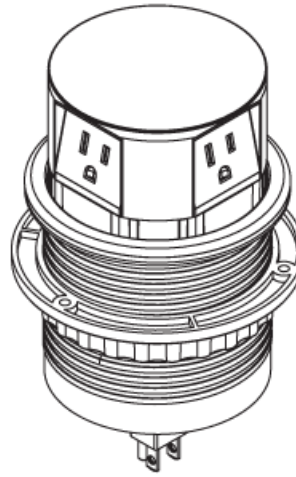
Follow the two conditions outlined by Industry Canada when using the device to ensure proper operation.

FAQ (Frequently Asked Questions)

- **Q: What is Industry Canada's license-exempt RSS?**
 - A: Industry Canada's license-exempt RSS refers to the regulatory standard that allows certain devices to operate without a specific license in Canada.
- **Q: What are the two conditions for operation?**
 - A: The two conditions typically relate to frequency usage and power output limitations. Please refer to the specific guidelines provided by Industry Canada for details.

Instruction Manual

Pop Up Socket Induction Charger
3 Outlets and 2 USB

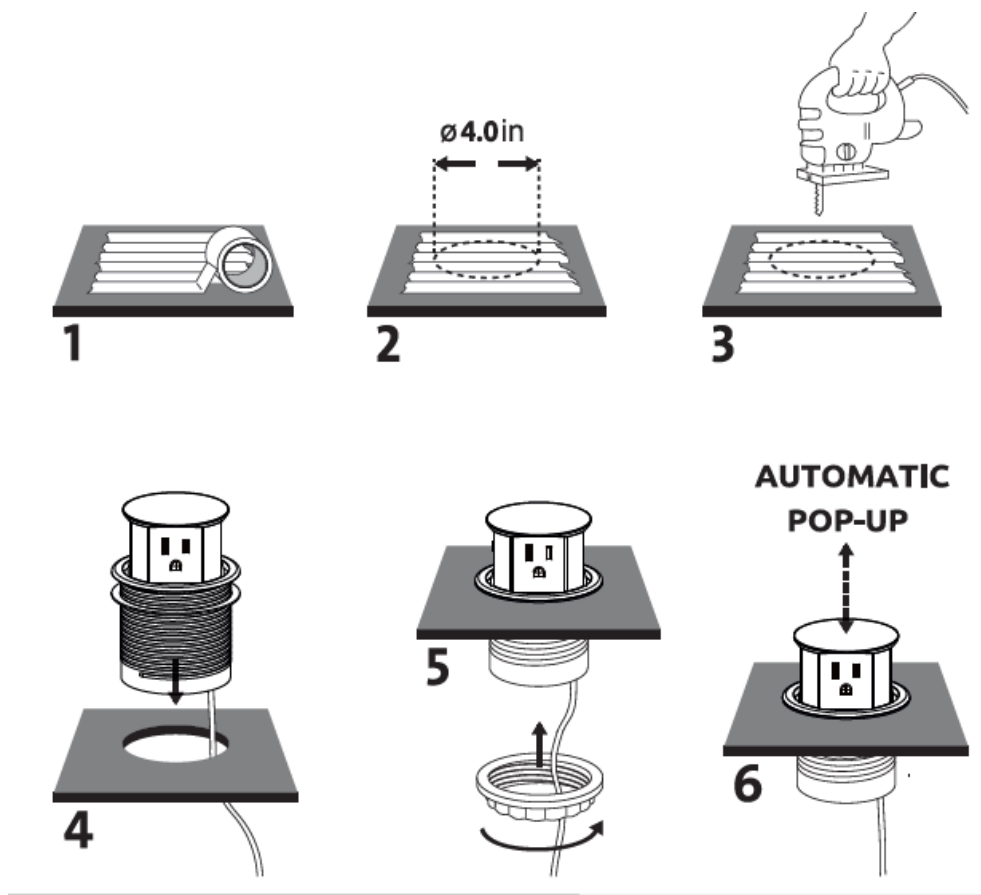


CUTOUT AND MOUNTING STEPS

- Select the desired location of a countertop or desktop. If used on a countertop, the device must be at least 10" from the stove top and other heating sources.
- The selected location must be at least 0.79 inch (20mm) away from the edge of the countertop or similar surface.
- The mounting surface must be between 0.79 inch (20mm) and 2.16 inch (55mm) thick.

Installation Instructions

1. Lay blue painter's tape on the surface of the wood.
2. Mark the position of the hole and drill through the tape into the wood. Painter's tape is a better choice than all-purpose tan tape because it adheres less strongly and is easier to pull off.
3. Cut a 3.9 inch to 4.0 inch hole in surface of countertop.
4. Feed the power cord through the hole in the countertop first, followed by the main unit, pushing down until gasket rests on countertop.
5. Feed the power cord through the locking flange and turn flange counterclockwise until locked in place against the underside of the countertop.
6. Plug the main unit into a wall outlet underneath the countertop. To open the pop up socket, firmly press down on the cover. To close the device, push down on the cover until the unit locks back into place.



Technical specifications

- 3 receptacles 2P+E 15A
- 2 x USB: type A+C 3.0A with Quick Charger 3.0
- Wireless Charger IOW
- With overload protection
- 14AWGx3C SJT PVC cable, length 6ft
- 15A/125V-, Max.1875W, 60Hz

Use specifications

Stock and use temperature: 230F (-500 to 1040F (400C)

NOTE

1. Please read this manual carefully before assembly and save it for reference
2. Only for indoor use
3. Please keep the product in a dry environment, and environment temperature cannot exceed 950F (350C)
4. Device connected to AC socket must have ground connection.
5. If the rating of the appliance (voltage, power, temperature, frequency etc.) exceeds the below SPECIFICATION, it may damage the appliance.
6. In case of failure of the product, do not use it again or open it for repair without permission.
7. This product cannot be treated as unclassified municipal waste and should be recycled by a separate collection facility.
8. Please contact the local government for information about food chain and damage your life and health.

FCC Statement

This device complies with part 18 of the FCC Rules. Operation is Subject To the following two conditions

1. This device may not cause harmful interference, and
 2. This device must accept any interference received, including interference that may cause undesired operation.
- Changes or modifications not explicitly approved by the party responsible for compliance could void the user's authority to operate this equipment.

Note: this equipment has been tested and found to comply with the limits for a Class B digital device, pursuant to part 18 of the FCC Rules. These limits are designed to provide reasonable protection against harmful interference in a residential installation. This equipment generates, uses and can radiate radio frequency energy and, if not installed and used in accordance with the instructions, may cause harmful interference to radio communications. However, there is no guarantee that interference will not occur in a particular installation. If this equipment does cause harmful interference to radio or television reception, which can be determined by turning the equipment off and on, the user is encouraged to try to correct the interference by one or more of the following measures

- Reorient or relocate the receiving antenna.
- Increase the separation between the equipment and receiver.
- Connect the equipment into an outlet on a circuit different from that to which the receiver is connected.
- Consult the dealer or an experienced radio/TV technician for help.

The equipment complies with FCC radiation exposure limits set forth for an uncontrolled environment. During the operation of device a distance of 15 cm surrounding the device and 20 cm above the top surface of the device must be respected.

This device complies with Part 18 of the FCC Rules. This equipment generates uses and can radiate radio frequency energy and, if not installed and used in accordance with the instructions, may cause harmful interference to radio communications. If this equipment does cause harmful interference to radio or television reception, which can be determined by turning the equipment off and on, the user is encouraged to try to correct the interference by one or more of the following measures

- Increase the separation between the equipment and any other radio device.
- Connect the equipment into an outlet on a circuit different from that to which the receiver is connected.

ISED Statement

This device complies with Industry Canada's license-exempt RSS. Operation is subject to the following two conditions

- This device may not cause interference; and
- This device must accept any interference, including interference

RF Exposure Information

This equipment complies with IC RSS-216 radiation exposure limits set forth for an uncontrolled environment. This equipment should be installed and operated with minimum distance 10 cm between the radiator and your body.

LINK2HOME

1 YEAR LIMITED WARRANTY

IMPORTANT: Proof of Purchase is required to obtain warranty service

Paragon Group USA Inc. warrants to the original owner that our products will be free from defect in workmanship and material for a period of ONE YEAR from the date of purchase. Should any unit(s) prove to be defective during this period, Paragon Group USA Inc. will be responsible for replacement of the defective unit(s) only. Paragon Group USA Inc. is not responsible for labor charges or any incidental or consequential expenses.


Not Covered — Batteries are not covered by this warranty. Repair service, adjustment and calibration due to misuse, abuse or negligence are not covered by this warranty. Unauthorized service or modification to this product or of any furnished components will void this warranty in its entirety. This warranty does not include reimbursement for inconvenience, installation, set-up time, loss of use, postage, unauthorized service, or other products used in conjunction with Link2Home products.

For warranty service, please contact Paragon Group USA Inc. Customer Service by Phone: 1- [888-783-6082](tel:888-783-6082) or e-mail: info@paragongroupusa.com.

This warranty gives you specific legal rights, and you may also have other rights which vary from state to state.

- Paragon Group USA Inc.
- Link2Home Product Division
- link2home.com
- Englewood, NJ 07631
- USA
- **WARNING:** Cancer and Reproductive
- Harm – www.P65Warnings.ca.gov .

Documents / Resources

	Link2Home EM-PU-150E Pop Up Socket Induction Charger [pdf] Instruction Manual EM-PU-150E Pop Up Socket Induction Charger, EM-PU-150E, Pop Up Socket Induction Charge r, Socket Induction Charger, Induction Charger, Charger
-------------------------------------------------------------------------------------	----------------------------------------------------------------------------------------------------------------------------------------------------------------------------------------------------------------------------------------------------

References

- [User Manual](#)

Manuals+, Privacy Policy

This website is an independent publication and is neither affiliated with nor endorsed by any of the trademark owners. The "Bluetooth®" word mark and logos are registered trademarks owned by Bluetooth SIG, Inc. The "Wi-Fi®" word mark and logos are registered trademarks owned by the Wi-Fi Alliance. Any use of these marks on this website does not imply any affiliation with or endorsement.