



Link tech LPH-TW18 Open Casing TWS Earphones User Manual

[Home](#) » [LINK TECH](#) » Link tech LPH-TW18 Open Casing TWS Earphones User Manual 

Link
tech
USER MANUAL
OPEN-CASING TWS EARPHONES
LPH-TW18
Hello!



OPEN-CASING
TWS EARPHONES

Contents

- 1 LPH-TW18 Open Casing TWS Earphones
- 2 Notice
- 3 Specifications:
- 4 Product & Accessories
- 5 Power On & Power Off
- 6 Operations & Functions
- 7 Special Instructions
- 8 Charging
- 9 Indicator Light Description
- 10 Precautions
- 11 Documents / Resources
 - 11.1 References

LPH-TW18 Open Casing TWS Earphones

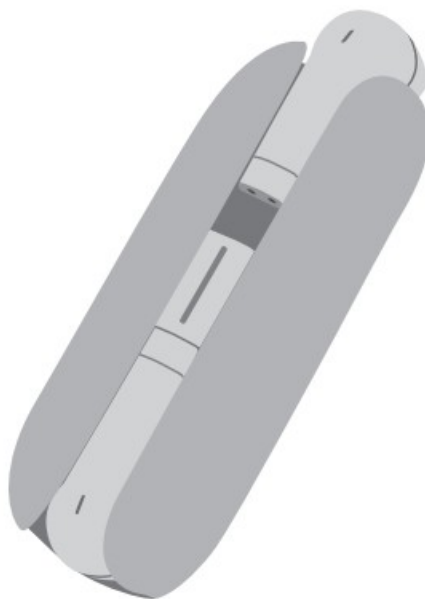
Please carefully read this Manual before using this Product for the very first time and well keep it for further reference

Dear Link Tech User ,

Thank you for choosing Link Tech product. Your choice is crucial for us,which means Link Tech has added a new user. Hope that we will bring you a good expeience through our products and services. Also hope you will put forward the good advice and suggestions by oficialcustomer hotline, Whatsapp and Bip in the process of product experience,which can help Link Tech to constantly improve product and service.

If you encounter any problems inusing thisproduct, please refer to service process. Your support is our strongest power, also your recognition and evaluation are a great encouragement to Link Tech.Thank you!
Link Tech Sales Team

Notice



Excessive repetition of the action of pushing the earphone may affectthe service life and after-sales service. It is recommended to push the earphone only when it is necessary to use the earphones.



Wearing foam ear tips can increase the stability and airtightness, and you can choose whether to install it or not which according to your experience.

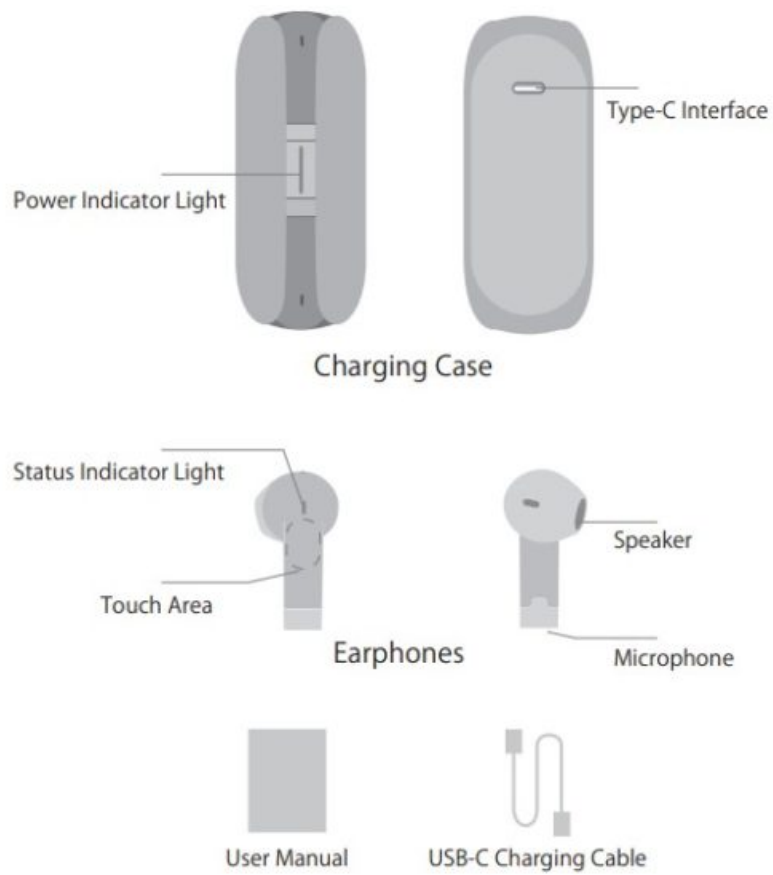
Specifications:

Chip	JL6973D4
Wearing Type	Semi-in-ear
Bluetooth Version	Bluetooth 5.1
Audio Decoding	AAC SBC
Speaker Power	5mW – 10mW
Battery Capacity	35mAh / 300mAh
Control Method	Touch
Waterproof Grade	IPX4 (earbuds)
Weight Single Earbud	3.94 grams
Charging Case	29.33 grams
Transmission Distance	≥10 meters
Bluetooth Battery Life	About 4.5 hours
Case Charging Times	4 times
Speaker Size	13mm TPU + LCP composite diaphragm
Appearance Material	ABS + PC + glass (PET colorful process)
Charging Time	About 1.5 hours for charging case/ about 50 minutes for earbuds



Product & Accessories

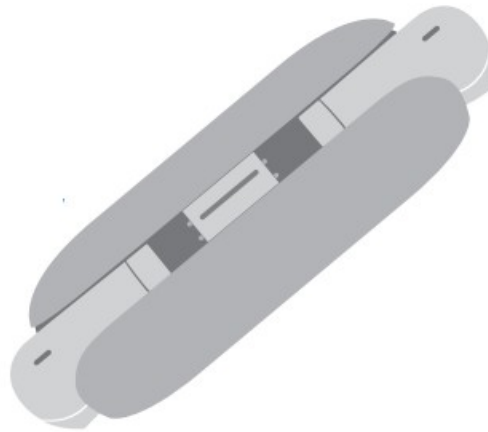
Packing list: Earphones (pair), Charging case, USB-C charging cable, User manual



Power On & Power Off

Power On: Method one

Take out the earphones from the charging case the earphones will boot automatically.



Power On:

Method two In the off state, press and hold the touch area of the earphones for 3 seconds.



Power Off: Method one

Put the earphones into the charging case, the earphones will shut down automatically.

**Power Off:**

Method two

Turn off the Bluetooth switch of mobile phone, and the earphone will automatically shut down in three minutes.

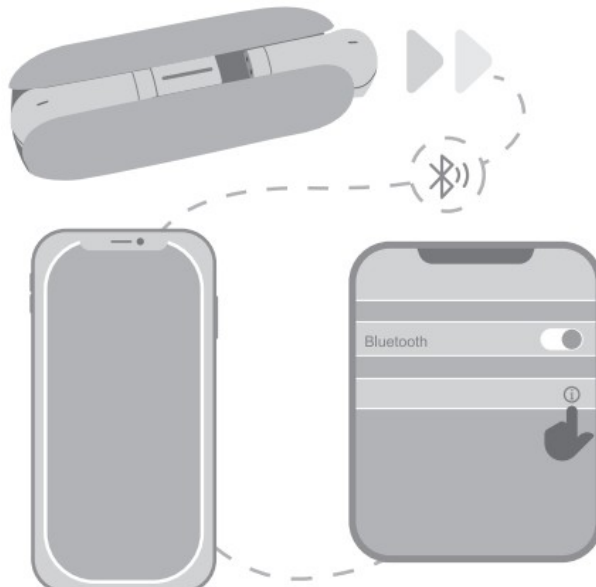
**Power Off:**

Method three

Turn off the Bluetooth switch of mobile phone, press the earphone for 4 seconds.

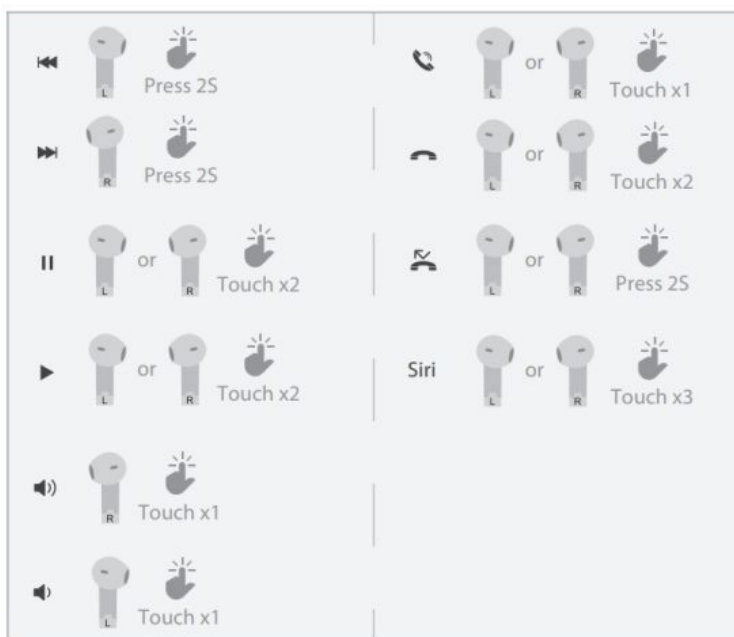
**Operations & Functions****Pairing:**

After being taken out from the charging case, the earphones will be paired automatically and then flash blue lights.



1. Take out the earphones from the charging case and confirm that the earphones are waiting to be paired. At this time, the two earphones flash blue lights quickly
2. Turn on the Bluetooth of the mobile phone, find the corresponding Bluetooth name and click to confirm, the voice prompt "Connected" indicates that the pairing is successful.
3. After the pairing is successful, take out the earphones from the charging case and they will pair with the smartphone automatically.

Operations & Functions



Special Instructions

After being taken out from the charging case, the earphones will be paired automatically and then flash blue lights.

Operations & Functions

Reset:

When two earphones can't be paired, please see below methods to reset.

Steps	Indicator Light
Delete the corresponding bluetooth connection record from the phone	
Take both earphones out of the 2- case and touch each earphone 5 times, then they will turn off.	The blue light and the red light will turn on at the same time for 1 second and then turn off.
Put both earphones into the case, and then take them out of the case (or turn on both ear phones by holding both touch areas for 5 seconds), then the two earphones will enter the pairing state.	Blue light and red light flash alternately.
Within 10 seconds, the two earphones will be paired.	Blue light flashes quickly.
Now you can connect the earphones with your phone	

Charging

Earphones: Put the earphones into the charging case, the charging case will automatically charge the earphone, and the earphone will display a red light when charging.

Charging Case: Use the type-c charging cable which is included in the package to charge the charging case.

Indicator Light Description

No pairing	Waiting or pairing	Paired successfully
Red and blue lights flash quickly	Indicator light flashes blue	The indicator light is off

Power on	Power off	Incoming call
Red and blue light up or 1 second	The indicator light is off	Blue light flashes twice every 3 seconds

Charging	End of charging
Red light is always on	The indicator light is off

Charging Case:

Charging	End of charging
When charging, the indicator light will keep flashing red.	The indicator light will be on red.

Earphones charging	Power shortage reminder
When put into the charging case, the charging case will turn on the white light for about 4 seconds and then turn off.	Red light flashes quickly.

Voice Prompts


Status	Voice prompt
Power on	Power on
Power off	Power off
Battery Low	Battery Low
Pairing	Pairing
Paired successfully	Connected
Disconnect	Disconnected
Adjust the volume to maximum	"Didi"
Adjust the volume to maximum	"Didi"

Precautions

1. Try to use the minimum volume that we can accept, high volume for a long period of time will lead to permanent damage to hearing.
2. Keep the earphones and accessories out of reach of children.
Children should use the earphones under the supervision of the adults.
3. Don't immerse the device in water. Avoid using this product when swimming, diving or showering.
4. Don't use this product in humid, dusty or near the magnetic field, to avoid causing internal circuit failure.
5. Don't disassemble, modify the device, or insert foreign matter into the device, which may cause equipment damage.
6. Don't put your finger or other parts into the hollow position of the charging case, to avoid physical injury.
7. The shell of charging case is metal and the edge position is thin, please avoid using it at full blast.
8. Don't place the earphones in direct sunlight such as window, car dashboard.
9. Avoid storing the earphones in the environment below 15°C or above 50°C.
10. Avoid charging the earphones or charging case in the environment below 0°C.



Documents / Resources

	Link tech LPH-TW18 Open Casing TWS Earphones [pdf] User Manual LPH-TW18, LPH-TW18 Open Casing TWS Earphones, Open Casing TWS Earphones, TWS Earphones, Earphones
---	---

References

- [User Manual](#)

[Manuals+](#), [Privacy Policy](#)

This website is an independent publication and is neither affiliated with nor endorsed by any of the trademark owners. The "Bluetooth®" word mark and logos are registered trademarks owned by Bluetooth SIG, Inc. The "Wi-Fi®" word mark and logos are registered trademarks owned by the Wi-Fi Alliance. Any use of these marks on this website does not imply any affiliation with or endorsement.