

Link2Home

Link 2 Home EM-PU-200E Pop Up Power Socket Outlets with USB



Link 2 Home EM-PU-200E Pop Up Power Socket Outlets with USB Instruction Manual

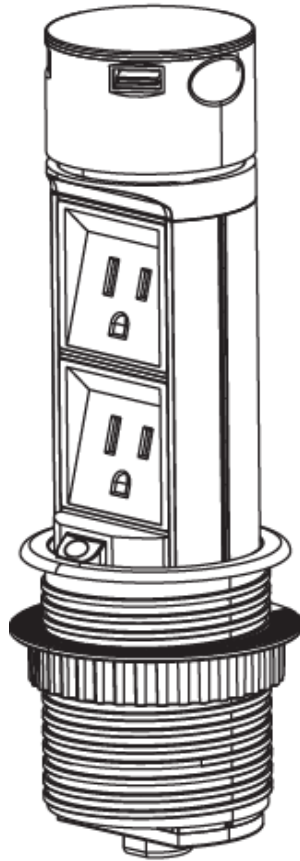
[Home](#) » [Link 2 Home](#) » Link 2 Home EM-PU-200E Pop Up Power Socket Outlets with USB Instruction Manual 

Contents

- [1 Link 2 Home EM-PU-200E Pop Up Power Socket Outlets with USB](#)
- [2 Product Usage Instructions](#)
- [3 Installation Instructions](#)
- [4 Technical specifications](#)
- [5 FCC Compliance Statement](#)
- [6 1 YEAR LIMITED WARRANTY](#)
- [7 Documents / Resources](#)
 - [7.1 References](#)
- [8 Related Posts](#)

Link2Home

Link 2 Home EM-PU-200E Pop Up Power Socket Outlets with USB

**Specifications:**

- Model Number: C10171
- Product Name: Pop Up Power Socket Outlets with USB
- Output: 2 Sockets 2P+E 15A Max 15Amp 125VAC, 2 ports USB charger: 5VDC 2.4A Type A (12W Max.)
- Dimensions: 297x105mm
- Power Cord: 14AWG type SJT, 6 feet, Plug black color

Product Usage Instructions**Cutout and Mounting Steps:**

1. Rotate the unit counterclockwise until locked in place against the underside of the countertop.
2. To open the pop-up feature, press firmly on the cover.
3. The unit will deploy upward approximately 1 inch initially.
4. Pull the cover upward until the unit locks into place.
5. To close the device, push the grey plastic locking tab and push down on the cover until the unit locks.

Technical Specifications:

This product features 2 sockets with 2P+E 15A Max 15Amp 125VAC output and 2 USB ports with a charger of 5VDC 2.4A Type A (12W Max.). The power cord is a 14AWG type SJT with a length of 6 feet. The unit also includes a plug in black color and a pop-up handle with USB ports.

Caution:

Do not overload the sockets to prevent damage to the appliance. If the product fails, do not attempt to repair it

without permission. Recycle the product properly and contact local authorities for disposal information.

FCC Compliance Statement:

This device complies with part 15 of the FCC Rules. It must not cause harmful interference and should accept any interference received. The equipment has been tested and complies with Class B digital device standards.

Warranty Information:

The product comes with a 1-year limited warranty. For warranty service, contact Paragon Group USA Inc. Customer Service by Phone: 1-[888-783-6082](tel:888-783-6082) or e-mail: info@paragongroupusa.com.

Contact Information:

Paragon Group USA Inc. Link2Home Product Division Englewood, NJ 07631 USA
link2home.com

FAQ:**1. Q: Can I plug high-power devices into the USB ports?**

A: The USB ports are designed for standard charging devices. Avoid plugging high-power devices that exceed the specified limits.

2. Q: How should I clean the unit?

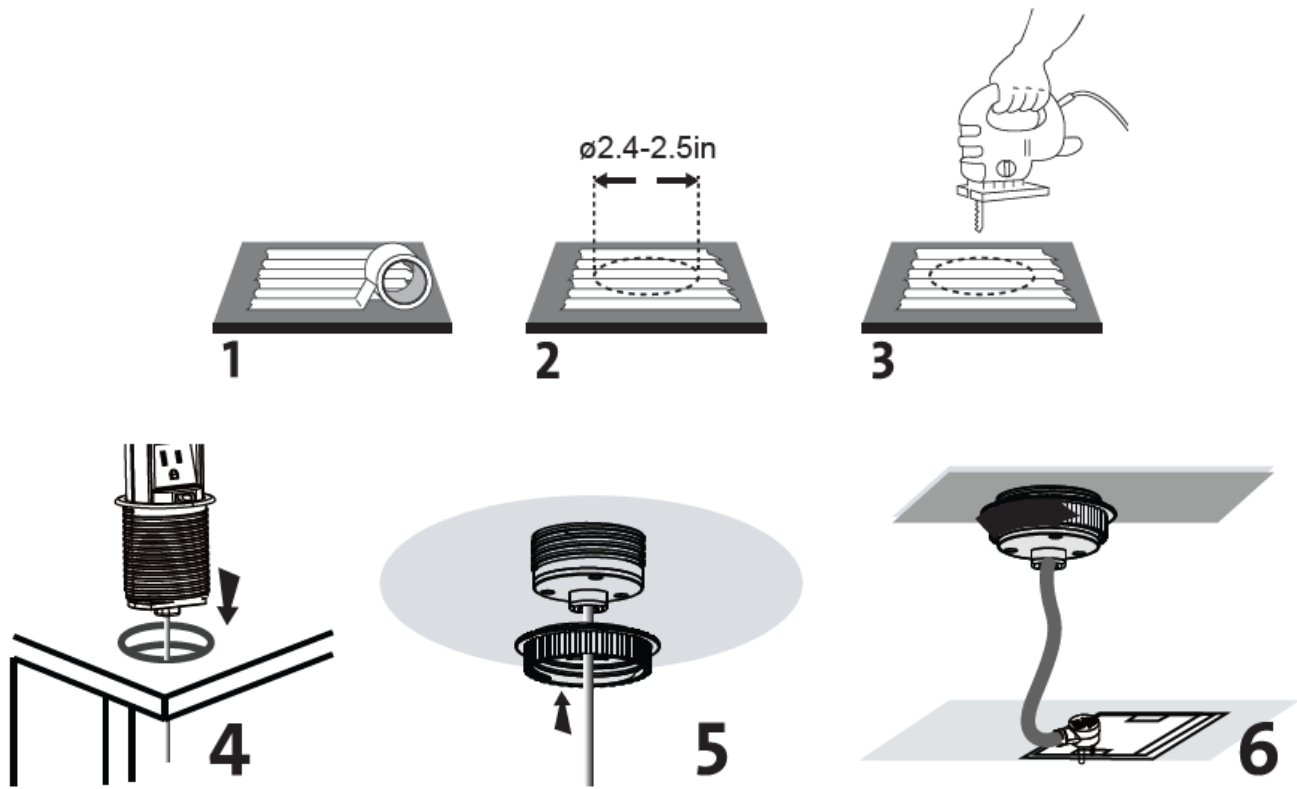
A: Use a dry or slightly damp cloth to clean the surface of the unit. Avoid using harsh chemicals or abrasive materials that may damage the product.

CUTOUT AND MOUNTING STEPS:

- Select the desired location of a countertop or desktop, if used on a countertop need to be at least 10" from stove top or other heating sources.
- The selected location must be at least 0.79 inch (20mm) away from the edge of the countertop or similar surface.
- The mounting surface must be between 0.79 inch (20mm) and 2.16 inch (55mm) thick.

Installation Instructions

1. Lay blue painter's tape on the surface on the wood.
2. Mark the position of the hole and drill through the tape into the wood. Painter's tape is a better choice than all-purpose tan tape because it adheres less strongly and is easier to pull off.
3. Cut hole in surface of countertop of 2.4 inch to 2.5 inch.
4. Feed power cord through the hole through countertop first, followed by the main unit, pushing down until gasket rests on countertop.
5. Feed power cord through locking flange and thread flange counterclockwise until locked in place against underside of countertop.
6. To open pop up feature, press firmly on cover. Unit will deploy upward approximately 1" initially, then pull cover upward until unit locks into place. To close device, push the grey plastic locking tab and push down on cover until unit locks.



Technical specifications

- 2 Sockets 2P+E 15A
- Max 15Amp 125VAC
- 2 ports USB charger: 5VDC 2.4A Type A (12W Max.)
- Power Cord: Power cord :14AWG type SJT 6 feet
- Plug black color
- Pop-up handle with USB ports.

Use specifications

Stock and use temperature: 23°F (-5°C) to 104°F (40°C)

Caution

1. Please read this manual carefully before assembly and save it for reference;
2. Only for indoor use;
3. Please keep the product in a dry environment, and environment temperature cannot exceed 95°F (35°C)
4. Device connected to AC socket must have ground connection.
5. If the rating of the appliance (voltage, power, temperature, frequency etc.) exceeds the below SPECIFICATION, it may damage the appliance.
6. In case of failure of the product, do not use it again or open it for repair without permission.
7. This product cannot be treated as unclassified municipal waste and should be recycled by a separate collection facility.
8. Please contact the local government for information about food chain and damage your life and health.

FCC Compliance Statement

This device complies with part 15 of the FCC Rules.

Operation is subject to the following two conditions:

1. This device may not cause harmful interference, and (2) this device must accept any interference received, including interference that may cause undesired operation.

NOTE: This equipment has been tested and found to comply with the limits for a Class B digital device, pursuant to part 15 of the FCC Rules. These limits are designed to provide reasonable protection against harmful interference in a residential installation. This equipment generates, uses and can radiate radio frequency energy and, if not installed and used in accordance with the instructions, may cause harmful interference to radio communications. However, there is no guarantee that interference will not occur in a particular installation. If this equipment does cause harmful interference to radio or television reception, which can be determined by turning the equipment off and on, the user is encouraged to try to correct the interference by one or more of the following measures:

- Reorient or relocate the receiving antenna.
- Increase the separation between the equipment and receiver.
- Connect the equipment into an outlet on a circuit different from that to which the receiver is connected.
- Consult the dealer or an experienced radio/TV technician for help.

1 YEAR LIMITED WARRANTY

IMPORTANT: Proof of Purchase is required to obtain warranty service

Paragon Group USA Inc. warrants to the original owner that our products will be free from defect in workmanship and material for a period of ONE YEAR from the date of purchase. Should any unit(s) prove to be defective during this period, Paragon Group USA Inc. will be responsible for replacement of the defective unit(s) only. Paragon Group USA Inc. is not responsible for labor charges or any incidental or consequential expenses.

Not Covered – Batteries are not covered by this warranty. Repair service, adjustment and calibration due to misuse, abuse or negligence are not covered by this warranty. Unauthorized service or modification to this product or of any furnished components will void this warranty in its entirety. This warranty does not include reimbursement for inconvenience, installation, set-up time, loss of use, postage, unauthorized service, or other products used in conjunction with Link2Home products.

For warranty service, please contact Paragon Group USA Inc. Customer Service by Phone: 1-[888-783-6082](tel:888-783-6082) or e-mail: info@paragongroupusa.com.

This warranty gives you specific legal rights, and you may also have other rights which vary from state to state.

Paragon Group USA Inc.

Link2Home Product Division

Englewood, NJ 07631

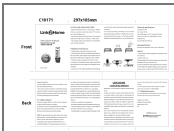
USA

link2home.com



WARNING: Cancer and Reproductive Harm – www.P65Warnings.ca.gov.

Documents / Resources



[Link 2 Home EM-PU-200E Pop Up Power Socket Outlets with USB](#) [pdf] Instruction Manual
EM-PU-200E Pop Up Power Socket Outlets with USB, EM-PU-200E, Pop Up Power Socket Outlets with USB, Power Socket Outlets with USB, Socket Outlets with USB, Outlets with USB

References

-  [Link2Home](#)
- [User Manual](#)

[Manuals+](#), [Privacy Policy](#)

This website is an independent publication and is neither affiliated with nor endorsed by any of the trademark owners. The "Bluetooth®" word mark and logos are registered trademarks owned by Bluetooth SIG, Inc. The "Wi-Fi®" word mark and logos are registered trademarks owned by the Wi-Fi Alliance. Any use of these marks on this website does not imply any affiliation with or endorsement.