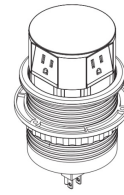


Link2Home
EM-PU--100E Pop Up Power
Socket Outlets With USB



Link 2 Home EM-PU--100E Pop Up Power Socket Outlets With USB Instruction Manual

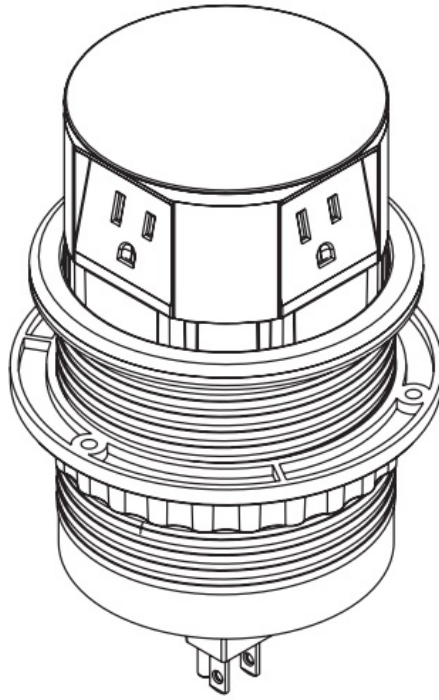
[Home](#) » [Link 2 Home](#) » Link 2 Home EM-PU--100E Pop Up Power Socket Outlets With USB Instruction Manual 

Contents

- [1 Link 2 Home EM-PU--100E Pop Up Power Socket Outlets With USB](#)
- [2 Product Information](#)
- [3 Product Usage Instructions](#)
- [4 Product FCC Compliance Statement](#)
- [5 Product Warranty Information](#)
- [6 Contact Information](#)
- [7 Frequently Asked Questions \(FAQ\):](#)
- [8 CUTOUT AND MOUNTING STEPS](#)
- [9 Installation Instructions](#)
- [10 Technical specifications](#)
- [11 Use specifications](#)
- [12 FCC Compliance Statement](#)
- [13 1 YEAR LIMITED WARRANTY](#)
- [14 Documents / Resources](#)
 - [14.1 References](#)

Link2Home

Link 2 Home EM-PU--100E Pop Up Power Socket Outlets With USB



Product Information

Specifications:

- **Model Number:** C10170
- **Product Name:** Pop Up Power Socket Outlets with USB
- **Fast Charging:** 2.4A
- **Model:** EM-PU-100E
- **Dimensions:** 297x105mm
- **Receptacles:** 3 x 2P+E 15A Max 15Amp 125VAC
- **USB Charger:** 5VDC 2.4A Type A
- **Power Cord:** 14AWG type SJT, 6 feet, black color
- **Finishing Plate:** Stainless steel

Product Usage Instructions

1. Locate the desired installation area on the countertop for the pop-up power socket.
2. Make a cutout in the countertop according to the provided dimensions (297x105mm).
3. Mount the power socket by rotating it counterclockwise until locked in place against the underside of the countertop.
4. Plug the power cord into the electrical outlet box underneath the countertop.
5. To open the pop-up feature, press firmly on the cover. To close the device, push down on the cover until it locks.

Caution:

1. Ensure proper installation to prevent damage to the appliance.
2. Do not use the product if it fails or attempt to repair it without permission.
3. Recycle the product through a separate collection facility when disposing of it.

4. Contact local authorities for information on proper disposal to avoid environmental damage.

Product FCC Compliance Statement

This device complies with part 15 of the FCC Rules and should not cause harmful interference. It must accept any received interference.

Product Warranty Information

One-year limited warranty provided by Paragon Group USA Inc. Contact customer service for warranty claims.

Contact Information

- Paragon Group USA Inc. Link2Home Product Division
- Englewood, NJ 07631 USA
- link2home.com

Frequently Asked Questions (FAQ):

- **Can the USB charger charge multiple devices simultaneously?**

Yes, the USB charger can charge multiple devices at the same time as long as they are within the specified power limits.

- **How do I know if the product is FCC compliant?**

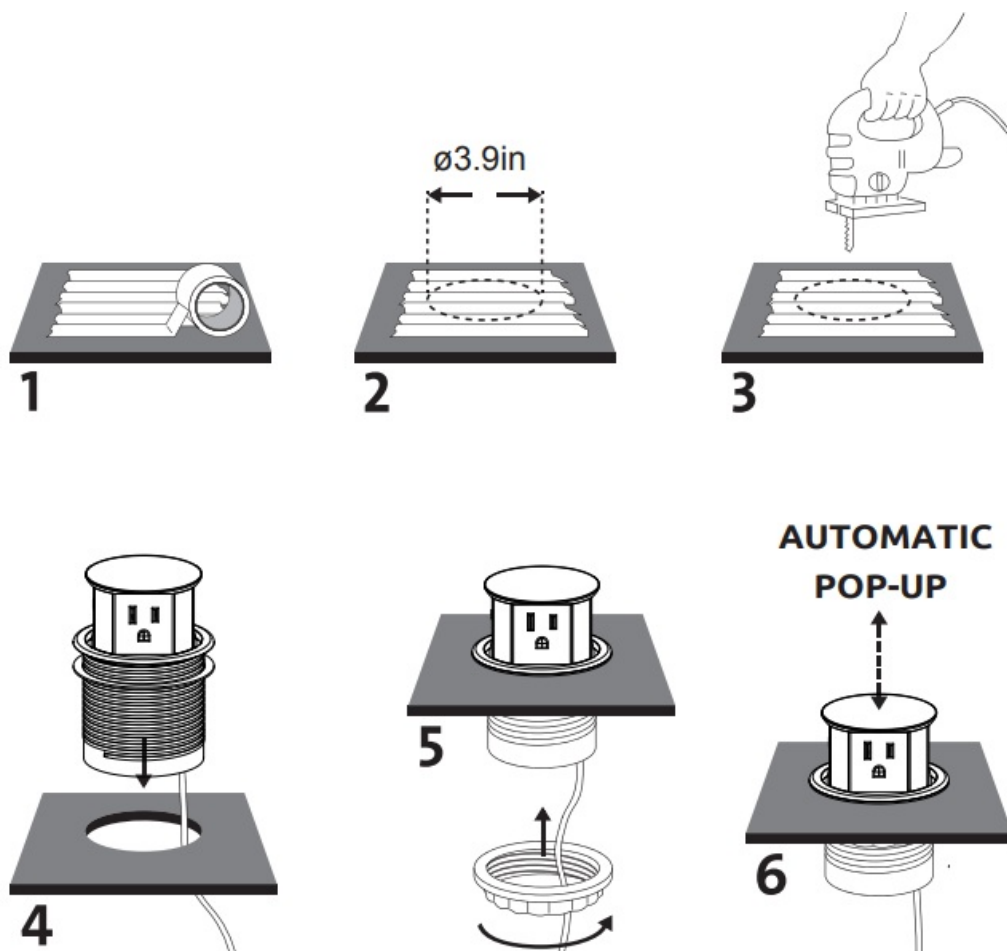
The product comes with an FCC Compliance Statement confirming its compliance with FCC Rules.

CUTOUT AND MOUNTING STEPS

- Select the desired location of a countertop or desktop, if used on a countertop need to be at least 10" from stove top or other heating sources.
- The selected location must be at least 0.79 inch (20mm) away from the edge of the countertop or similar surface.
- The mounting surface must be between 0.79 inch (20mm) and 2.16 inch (55mm) thick.

Installation Instructions

1. Lay blue painter's tape on the surface on the wood.
2. Mark the position of the hole and drill through the tape into the wood. Painter's tape is a better choice than all-purpose tan tape because it adheres less strongly and is easier to pull off.
3. Cut hole in surface of countertop of 3.9 inch to 4.0 inch.
4. Feed power cord through the hole through countertop first, followed by the main unit, pushing down until gasket rests on countertop.
5. Feed power cord through locking flange and thread flange counterclockwise until locked in place against underside of countertop.
6. Plug power cord into electrical outlet box underneath countertop. To open pop up feature, press firmly on cover. To close device, push down on cover until unit locks.



Technical specifications

- 3 receptacles 2P+E 15A
- **Max 15Amp** 125VAC
- **USB charger:** 5VDC 2.4A Type A
- **Power Cord:** Power cord :14AWG type SJT 6 feet
- Plug black color
- Stainless steel finishing plate

Use specifications

Stock and use temperature: 23°F (-5°C) to 104°F (40°C)

Caution

1. Please read this manual carefully before assembly and save it for reference;
2. Only for indoor use;
3. Please keep the product in a dry environment, and environment temperature cannot exceed 95°F (35°C)
4. Device connected to AC socket must have ground connection.
5. If the rating of the appliance (voltage, power, temperature, frequency etc.) exceeds the below SPECIFICATION, it may damage the appliance.
6. In case of failure of the product, do not use it again or open it for repair without permission.
7. This product cannot be treated as unclassified municipal waste and should be recycled by a separate collection

facility.

8. Please contact the local government for information about food chain and damage your life and health.

FCC Compliance Statement

This device complies with part 15 of the FCC Rules. Operation is subject to the following two conditions:

1. This device may not cause harmful interference
2. this device must accept any interference received, including interference that may cause undesired operation.

NOTE: This equipment has been tested and found to comply with the limits for a Class B digital device, pursuant to part 15 of the FCC Rules. These limits are designed to provide reasonable protection against harmful interference in a residential installation. This equipment generates, uses and can radiate radio frequency energy and, if not installed and used in accordance with the instructions, may cause harmful interference to radio communications. However, there is no guarantee that interference will not occur in a particular installation. If this equipment does cause harmful interference to radio or television reception, which can be determined by turning the equipment off and on, the user is encouraged to try to correct the interference by one or more of the following measures:

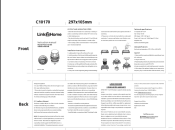
- Reorient or relocate the receiving antenna.
- Increase the separation between the equipment and receiver.
- Connect the equipment into an outlet on a circuit different from that to which the receiver is connected.
- Consult the dealer or an experienced radio/TV technician for help.

1 YEAR LIMITED WARRANTY

IMPORTANT: Proof of Purchase is required to obtain warranty service

- Paragon Group USA Inc. warrants to the original owner that our products will be free from defect in workmanship and material for a period of ONE YEAR from the date of purchase. Should any unit(s) prove to be defective during this period, Paragon Group USA Inc. will be responsible for replacement of the defective unit(s) only. Paragon Group USA Inc. is not responsible for labor charges or any incidental or consequential expenses.
- Not Covered – Batteries are not covered by this warranty. Repair service, adjustment and calibration due to misuse, abuse or negligence are not covered by this warranty. Unauthorized service or modification to this product or of any furnished components will void this warranty in its entirety. This warranty does not include reimbursement for inconvenience, installation, set-up time, loss of use, postage, unauthorized service, or other products used in conjunction with Link2Home products.
- For warranty service, please contact Paragon Group USA Inc. Customer Service by Phone: 1- [888-783-6082](tel:888-783-6082) or e-mail: info@paragongroupusa.com.
- This warranty gives you specific legal rights, and you may also have other rights which vary from state to state.
- Paragon Group USA Inc.
- Link2Home Product Division
- Englewood, NJ 07631
- USA

Documents / Resources

	Link 2 Home EM-PU--100E Pop Up Power Socket Outlets With USB [pdf] Instruction Manual EM-PU--100E Pop Up Power Socket Outlets With USB, EM-PU--100E, Pop Up Power Socket Outlets With USB, Power Socket Outlets With USB, Socket Outlets With USB, Outlets With USB, With USB, USB
---	--

References

-  [Link2Home](#)
- [User Manual](#)

[Manuals+](#), [Privacy Policy](#)

This website is an independent publication and is neither affiliated with nor endorsed by any of the trademark owners. The "Bluetooth®" word mark and logos are registered trademarks owned by Bluetooth SIG, Inc. The "Wi-Fi®" word mark and logos are registered trademarks owned by the Wi-Fi Alliance. Any use of these marks on this website does not imply any affiliation with or endorsement.