

Contents [[hide](#)]

- [1 Lingchuangxun LCX-ZJ1200003 WiFi Repeater](#)
- [2 Product Specifications](#)
- [3 Product Usage Instructions](#)
- [4 Quick Installation Guide](#)
- [5 Wi-Fi Repeater mode setup](#)
- [6 FCC STATEMENT](#)
- [7 Frequently Asked Questions](#)
- [8 Documents / Resources](#)
 - [8.1 References](#)

Lingchuangxun

Lingchuangxun LCX-ZJ1200003 WiFi Repeater








Product Specifications

- **Compliance:** Part 15 of the FCC Rules
- **Operating Conditions:** Uncontrolled environment
- **Radiation Exposure Limits:** FCC approved
- **Minimum Distance:** 20cm between radiator and body

Product Usage Instructions

Operation

1. Follow the instructions provided in the user manual for optimal performance.
2. If experiencing interference, try the following:
 - Reorient or relocate the receiving antenna.
 - Increase the separation between the device and receiver.
 - Consult a dealer or experienced technician if issues persist.

Icon	Indication	Status
	System LED	The power indicator will remain on for 3 seconds after powering on
	Internet LED	When the machine is in Repeater or AP model and the Internet connection is correct.The Internet LED is on, otherwise it is off.
	Extension LED	If the indicator is on, the signal between the trunk and router is normal
	WAN/LAN LED	When network cable is connecting, the LED will flash quickly, otherwise it will be off.
	ResetButton	Press and hold the reset key for 5 seconds, the system will be reset.
	WPSButton	Short press,the red LED flashes quickly.The red light will be on for 2 seconds when match successfully , and the machine willrestart automatically . The red light will be off for 2 seconds when matching is unsuccessful or overtime, and the machine willrestart automatically too.

Working Mode Diagram

Note: If you need to connect the network cable, please connect the network cable after the configuration is completed.

Repeater Mode: As a wireless signal extender

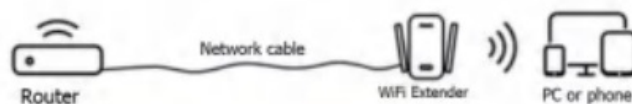
- Extend Signal [Using cables to reduce



- Extend your Wi-Fi signal with a cable, connect your & devices and the extender stably.



- Get WiFi speed b, connecting my router and my extender with a network cable in the poor WiFi signal area.



- Routing mode: One or more networks or network segments can be connected by Network devices



Quick Installation Guide

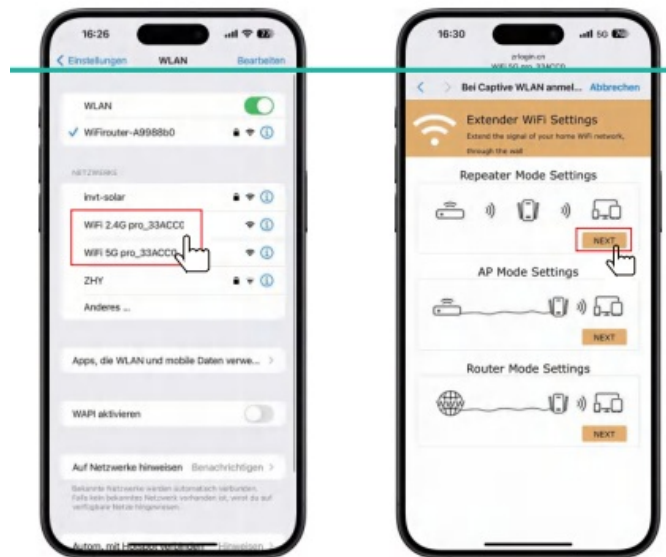
When the machine works normally, use the mobile phone to search and connect to WiFi 2.4G pro_ or WiFi 5pro0_ (xxxx" is the last 6 numbers of the repeater MAC address)

- **Note:** If the mobile phone does not automatically jump settings page after connecting. Please enter the Wi-Fi name that has been connected on the mobile in the Wi-Fi manager. Turn on the wifi and then reopen the wifi search it or input 168, 11.1".

Wi-Fi Repeater mode setup

Step 1

Click repeater mode to enter the network search page.

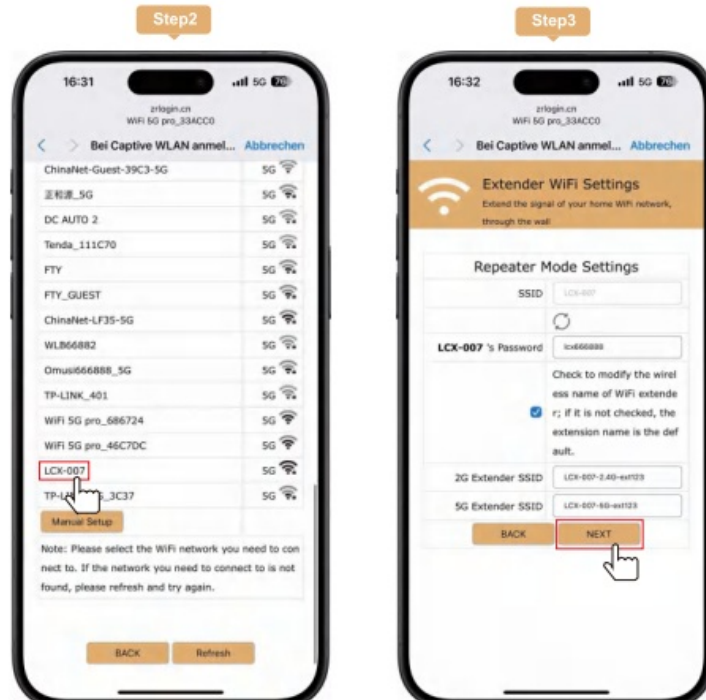


Step 2

Select the wireless signal you want to expand. If it is a hidden network, you need to add it manually.

Step 3

Enter your router connection password and click “NEXT”. If you don’t want the same name as your router, please choose and input the new name.



Step 4:

Click the “Finish” button to complete the relay mode configuration (The extended password is the same as the router’s by default)

Step 5

Complete Repeater Mode setting.



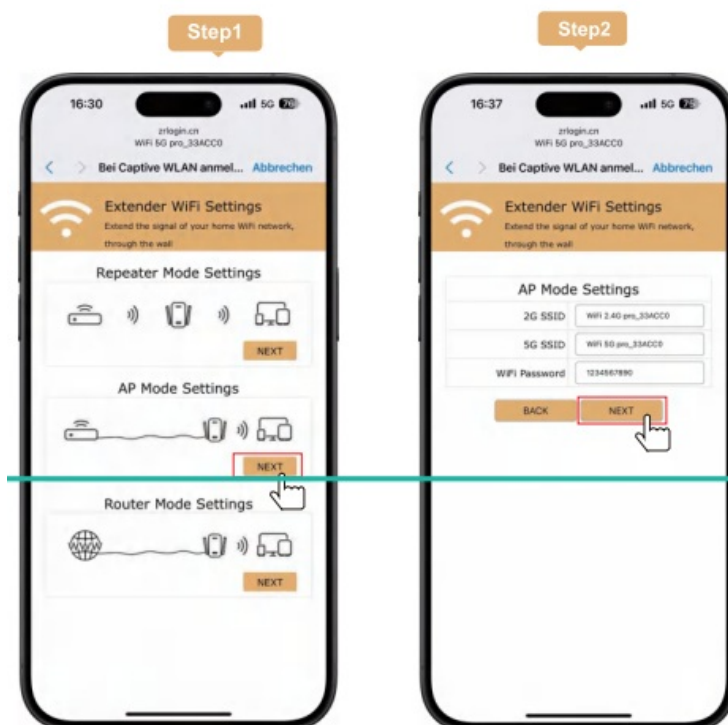
AP mode Setting

Step 1:

Click to enter the settings page.

step2:

Set the wireless name and password with more than 8 digits(the wireless name and password can be set according to personal preference).

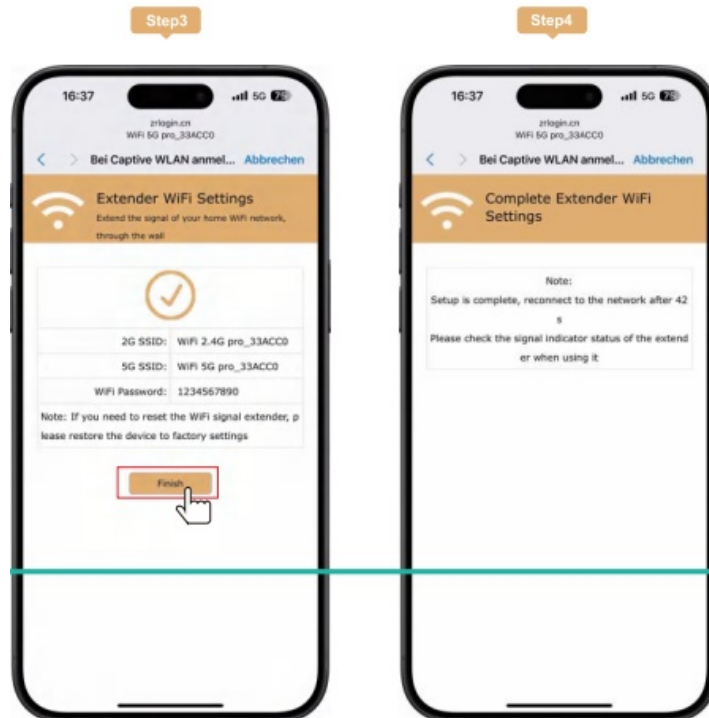


Step 3:

Click the “Finish” button to complete the AP mode configuration.

Step4:

Complete AP mode setting.



Routing mode setting

3 types of Router Mode for selecting “Dynamic IP”, “Static IP “and “PPPOE dial-up “for Internet access. On the software management page

1. Dynamic IP mode: Select the ” dynamic IP mode “, setting the 2.4G/5.8G wireless ” SSID name “a nd ” wireless password “.Click Next and complete the configuration. Waiting for the system to restart.
2. Static IP mode: Select the ” static IP mode “, fill in the IP address, subnet mask, gateway and DNS address provided by the network service provider, Setting the 2.4G/5.8G wireless ” SSID name “a nd ” wireless password ” .click Next for Complete configuration, waiting for the system to restart
3. PPPOE dial-up mode: Select ” PPPOE mode “, fill in the ” broadband account ” and ” broadband password ” by the network service provider, setting the 2.4G/5.8G wireless ” SSID name” and ” Wireless password.



FCC STATEMENT

This equipment has been tested and found to comply with the limits for a Class B digital device, under Part 15 of the FCC Rules. These limits are designed to provide reasonable protection against harmful interference in a residential installation. This equipment generates uses and can radiate radio frequency energy and, if not installed and used according to the instructions, may cause harmful interference to radio communications. However, there is no guarantee that interference will not occur in a particular installation. If this equipment does cause harmful interference to radio or television reception, which can be determined by turning the equipment off and on, the user is encouraged to try to correct the interference by one or more of the following measures:

- Reorient or relocate the receiving antenna.
- Increase the separation between the equipment and receiver.
- Connect the equipment to an outlet on a circuit different from that to which the receiver is connected.
- Consult the dealer or an experienced radio/TV technician for help.

This device complies with part 15 of the FCC Rules. Operation is subject to the following two conditions:

1. This device may not cause harmful interference, and
2. This device must accept any interference received, including interference that may cause undesired operation.

Changes or modifications not expressly approved by the party responsible for compliance could void the user's authority to operate the equipment.

RF warning for Mobile device:

This equipment complies with FCC radiation exposure limits set forth for an uncontrolled environment. This equipment should be installed and operated with minimum distance 20cm between the radiator & your body.

Frequently Asked Questions

What should I do if I encounter interference while using the product?

In case of interference, try reorienting the receiving antenna, increasing separation between devices, or consult a professional for assistance.

Is it safe to use the mobile device with this product?

Yes, the product complies with FCC radiation exposure limits. Ensure a minimum distance of 20cm between the device's radiator and your body for safety.

What should I do if want to reset the extension name and password?

Please reset the extender and it When the is Slow the reset is successfull.

What should I do if the network speed is only half of the original when the repeater is connected?

If the repeater uses a single frequency band for receiving and transmitting. This means that the bandwidth of the repeater is divided into two halves, half is used to receive signals from the upper-level router. And half is used to transmit wireless signals for users' use, resulting in the Speed Of the Internet being halved. The Solution is to the 2.4G signal for receiving and connecting with the upper-level router. And the user Connection uses a 5G signal; Or you Can use the Signal for

receiving and with the upper-level router. And the user connection uses a 24G signal in this way. The bandwidth of the amplifier can used to the greatest extent the actual speed can be avoided.

After the relay mode extension IS set successfully, what should I do if the extension signal is connected but there is no network?

*Please check whether the network light is on for a long tirne: if it is not, please chock whether the router can go online normally. *Reset the extender and waitfor the system to nash, *press the reset button to restore factory settings.

Documents / Resources

	Lingchuangxun LCX-ZJ1200003 WiFi Repeater [pdf] User Manual LCX-ZJ1200003, LCX-ZJ1200003 WiFi Repeater, WiFi Repeater, Repeater
--	--

References

- [User Manual](#)

LCX-ZJ1200003, LCX-ZJ1200003 WiFi Repeater, Lingchuangxun, Repeater, Wifi

Lingchuangxun Repeater

Leave a comment

Your email address will not be published. Required fields are marked *

Comment *

Name

Email

Website

☐ Save my name, email, and website in this browser for the next time I comment.

Post Comment

Search:

e.g. whirlpool wrf535swhz

Search

[Manuals+](#) | [Upload](#) | [Deep Search](#) | [Privacy Policy](#) | [@manuals.plus](#) | [YouTube](#)

This website is an independent publication and is neither affiliated with nor endorsed by any of the trademark owners. The "Bluetooth®" word mark and logos are registered trademarks owned by Bluetooth SIG, Inc. The "Wi-Fi®" word mark and logos are registered trademarks owned by the Wi-Fi Alliance. Any use of these marks on this website does not imply any affiliation with or endorsement.