



LINEAR MTS1 Megacode Single Channel Remote Control Instruction Manual

[Home](#) » [LINEAR](#) » LINEAR MTS1 Megacode Single Channel Remote Control Instruction Manual 

Linear®

MEGACODE®

MTS1 and MTS3
1 and 3 Button Remote Control
Programming/Operating Instructions



Contents

[1 DESCRIPTION](#)

[2 VISOR CLIP
INSTALLATION](#)

[3 REPLACING THE
BATTERY](#)

[4 LIMITED WARRANTY](#)

[5 IMPORTANT !!!](#)

[6 Documents / Resources](#)

DESCRIPTION

The 1 and 3 button remote controls are wireless. The MTS1 and MTS3 are 1 and 3 button MegaCode remote controls designed to be used with Linear garage door and gate operators and MegaCode remote receivers. Each of the remote control buttons will send a unique code when pressed. One button can be used to activate the individual's garage door opener, a second button can operate an access gate, a third button can activate an additional garage door operator.

MegaCode Remote controls and receivers do not contain a typical "coding switch". Each remote control is permanently coded at the factory. The receiver is programmed by "learning" a remote control's unique digital code. The receiver will activate only from the "memorized" transmitters.

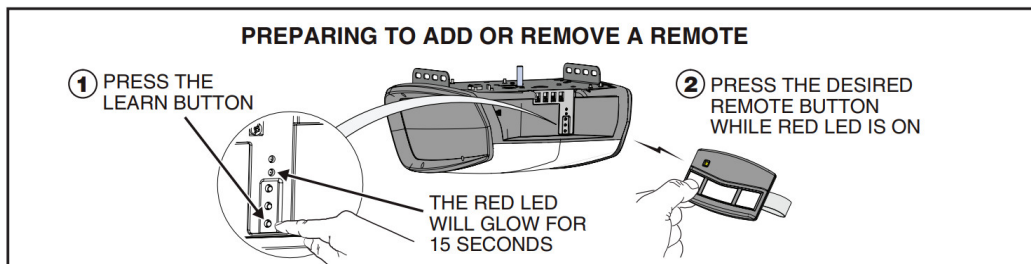
The remote control is powered by a Type CR2032 "coin-cell" battery. The battery should last at least 1 year with normal use. The indicator light on the remote control will glow when the unit is activated. If the indicator lights

dimly, or not at all when transmitting, the battery needs to be replaced. To conserve battery life, an internal timer limits the transmission duration to 20 seconds if a remote control button is held down.

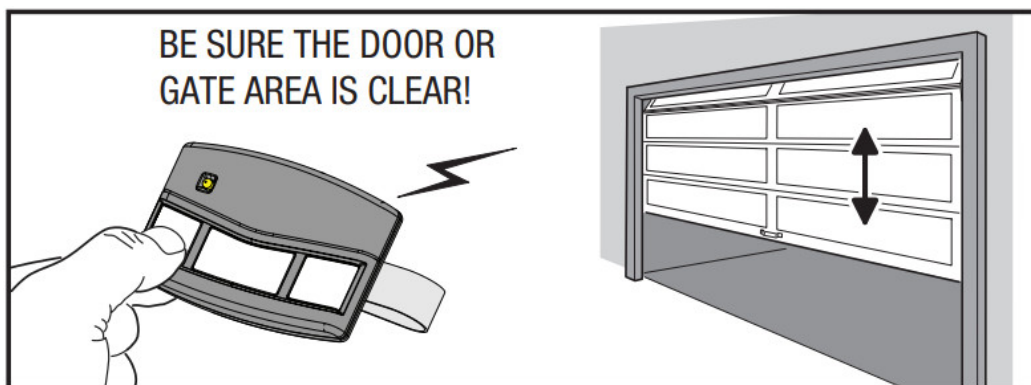
1. Refer to the instructions provided with the garage door opener to set it into “learn” mode.

- Press the opener’s LEARN BUTTON for 1 second and release.
- The opener will FLASH (and may beep) once.
- The RED LED will remain lit in Learn Mode for 15 seconds.

2. While the RED LED is lit, PRESS and HOLD the desired remote button until the RED LED and lamp FLASHES once (operator may also beep).

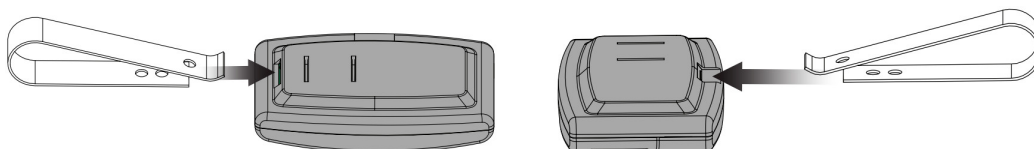


After programming, test the remote control from various locations. Be sure the door or gate areas are clear. Activate the remote control and verify that the remote control triggers the operator(s).



VISOR CLIP INSTALLATION

The visor clip can be installed for horizontal or vertical mounting. Slide the visor clip into one of the slots shown.



REPLACING THE BATTERY

When the indicator light on the remote glows dimly, or fails to light at all when the remote control is activated, the battery needs replacing.

Follow the steps in the diagram and use caution to keep batteries away from children.

Replace old battery with a new CR2032 Lithium battery.

Properly dispose of old batteries. Many electronic stores and supermarkets have battery recycling bins.

Never dispose of batteries in fire because they could explode.

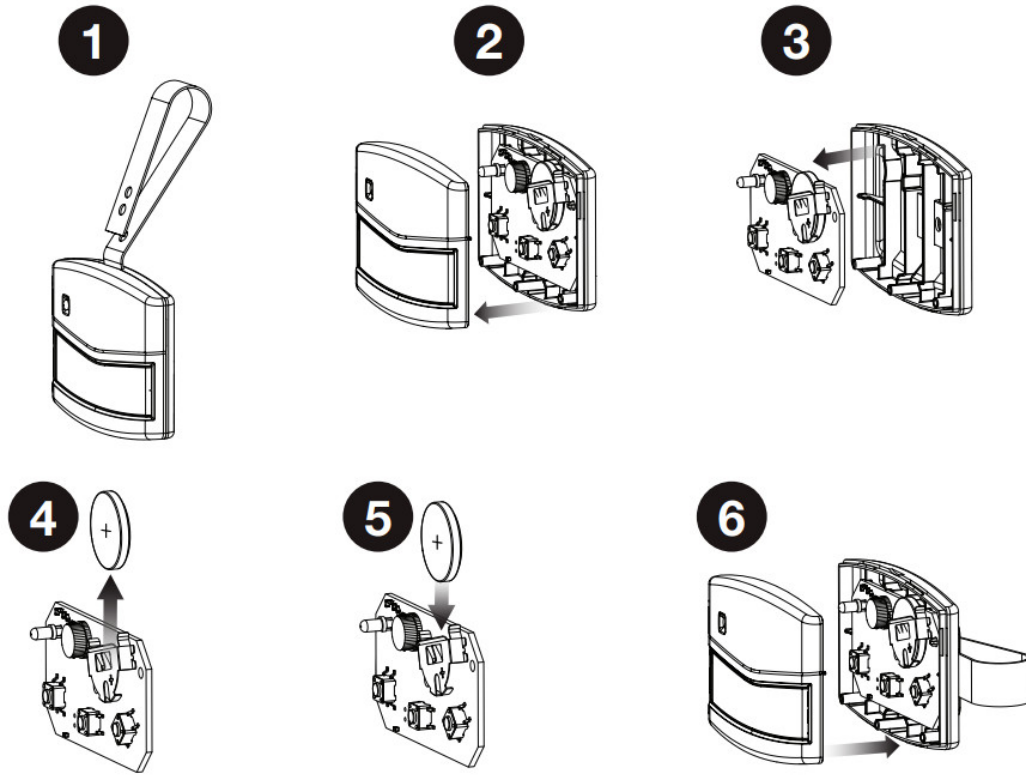
⚠ WARNING

KEEP BATTERIES OUT REACH OF CHILDREN. Swallowing batteries can lead to serious injury or death. If you suspect someone has swallowed a battery, go to the hospital immediately. Do not induce vomiting or eat or drink anything.

For more information, call the National Battery Ingestion Hotline: 202-625-3333.

The battery identification number for this product is CR2032.

REPLACING THE REMOTE CONTROL BATTERY



1. USE VISOR CLIP IN SLOT TO OPEN CASE
2. LIFT OFF TOP OF CASE
3. CAREFULLY REMOVE THE BOARD
4. REMOVE OLD BATTERY AND DISPOSE OF PROPERLY
5. INSERT NEW CR2032 BATTERY PLUS SIDE UP
6. RE-ASSEMBLE REMOTE CONTROL

LIMITED WARRANTY

This product is warranted to the consumer against defects in material and workmanship for one year from the date of purchase. This warranty applies to first retail buyers of new devices. Manufacturer will repair, or at its option, replace, any device it finds that requires service under this warranty, and will return the repaired or replaced device to the consumer at the manufacturer's cost. For warranty service and shipping instructions contact manufacturer at the address shown below. Devices must be sent to manufacturer for service at owner's expense. The remedies provided by this warranty are exclusive. Implied warranties under state law are to the one year period of this written warranty. Some states do not allow limitations on how long an implied warranty lasts, so the above limitation may not apply to you. In order to be protected by this warranty, save your proof of purchase and send copy with equipment should repair be required. This warranty gives you specific legal rights, and you may also have other rights which vary from state to state.

All products returned for warranty service require a Return Product Authorization Number (RPA#). Contact Technical Service at 760-438-7000 for an RPA# and other important details.

IMPORTANT !!!

Entrematic radio controls provide a reliable communications link and fill an important need in portable wireless signaling.

However, there are some limitations which must be observed.

- For U.S. installations only: The radios are required to comply with FCC Rules and Regulations as Part 15 devices. As such, they have limited transmitter power and therefore limited range.
- A receiver cannot respond to more than one transmitted signal at a time and may be blocked by radio signals that occur on or near their operating frequencies, regardless of code settings.
- Changes or modifications to the device may void FCC compliance.
- Infrequently used radio links should be tested regularly to protect against undetected interference or fault.
- A general knowledge of radio and its vagaries should be gained prior to acting as a wholesale distributor or dealer, and these facts should be communicated to the ultimate users.

WARNING: Changes, modifications or adjustments not expressly approved by manufacturer could void the user's authority to operate this equipment. There Are No User Serviceable Parts.

NOTICE: This device complies with part 15 of the FCC rules and with Industry Canada license-exempt RSS standard(s).

Operation is subject to the following two conditions: (1) this device may not cause interference, and (2) this device must accept any interference, including interference that may cause undesired operation of the device.

For more information, please visit www.devancocanada.com or call toll free at 855-931-3334

Copyright © 2020 Nortek Security & Control LLC

10029900 Rev-A

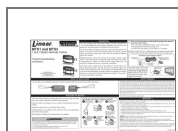
Manufactured by:

Nortek Security and Control

760-438-7000

www.nortekcontrol.com

Documents / Resources



[LINEAR MTS1 Megacode Single Channel Remote Control](#) [pdf] Instruction Manual
MTS1, MTS3, MTS1 Megacode Single Channel Remote Control, Megacode Single Channel Remote Control, Single Channel Remote Control, Channel Remote Control, Remote Control, Control