

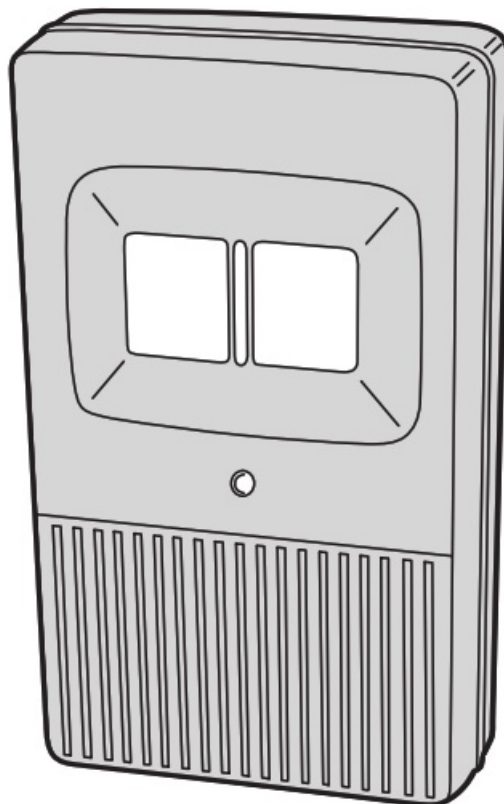


Linear DT-2A Two-button Digital Transmitter Instructions

[Home](#) » [LINEAR](#) » Linear DT-2A Two-button Digital Transmitter Instructions 

Linear®

Delta-3 Series
DT-2A
Two-button Digital
Transmitter
Code Setting Instructions

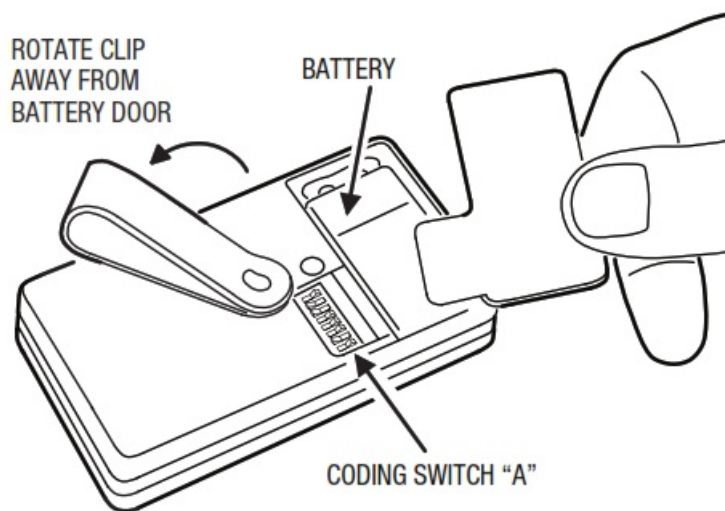


Contents

- [1 DT-2A TWO-BUTTON TRANSMITTER CODE SETTING](#)
- [2 SETTING CODE SWITCH "A"](#)
- [3 LIMITED WARRANTY](#)
- [4 Documents / Resources](#)
 - [4.1 References](#)
- [5 Related Posts](#)

DT-2A TWO-BUTTON TRANSMITTER CODE SETTING

There are two digital coding switches in the DT-2A transmitter. Code Switch "A" is exposed by removing the battery access cover. It is the coding switch for the left button on the front of the transmitter (Button "A"). Code Switch "B" is the coding switch for the right button on the front of the transmitter (Button "B"). The switch is located behind the back cover of the transmitter. To access Coding Switch "B", it is necessary to remove the screw located in the middle of the back cover.



SETTING CODE SWITCH "A"

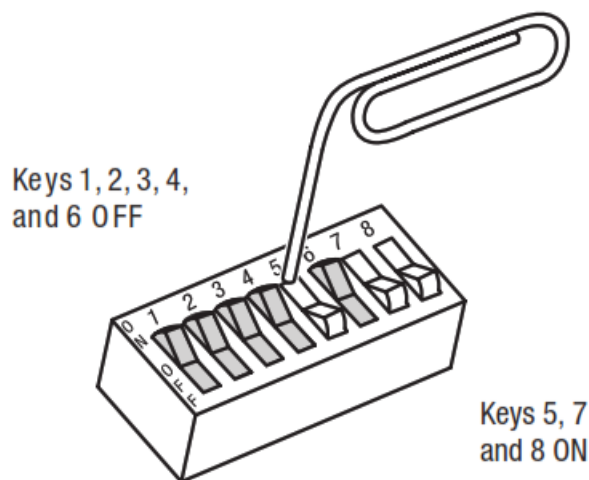
Before removing the battery access door, loosen the battery clip screw and rotate the clip away from the door. To open the battery access cover and gain access to Coding Switch "A", lift off the small L-shaped cover by inserting your thumbnail or small screwdriver under either of the two slots at the edge of the case. The coding switch has eight keys numbered 1-8. To set a code, select any combination of ON or OFF positions for the switch keys numbered 1-8. Use a paper clip or other pointed object (except a pencil or pen) to set the keys on the coding switch. The ON position is when the top of the switch is down.

SETTING CODE SWITCH "B"

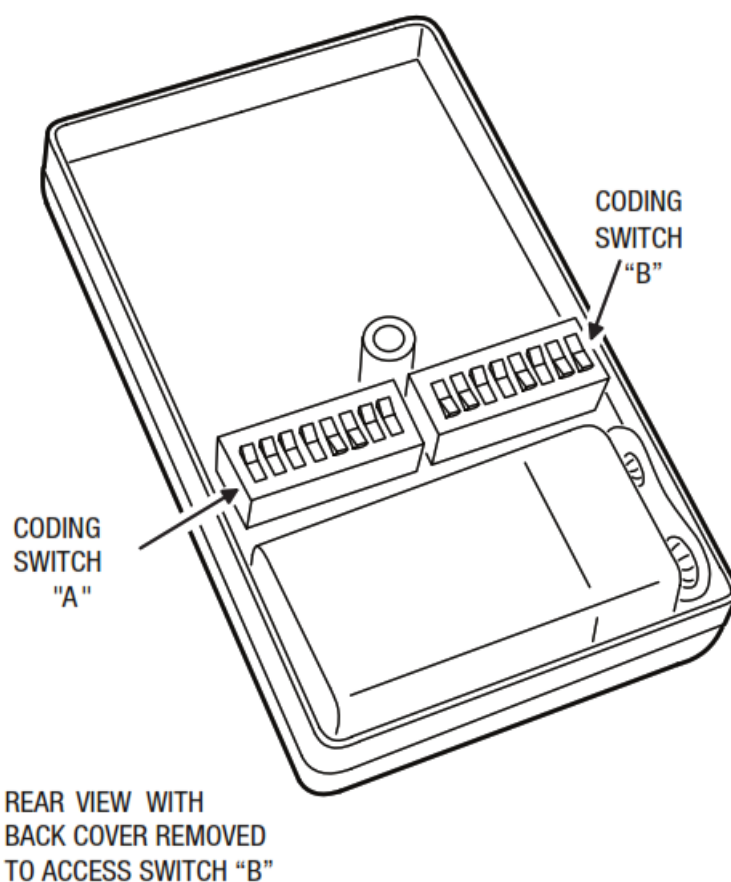
To gain access to Coding Switch "B", first remove the screw in the middle of the back cover. Remove the back cover to expose the 8-key switch. To set a code, select any combination of ON and OFF positions for the switch keys, in the same manner, as described for Coding Switch "A".

CAUTION

It is not advisable to set a code with all keys **ON**, **OFF**, or alternating **ON** and **OFF**, because these codes are too easy to duplicate.



TRANSMITTERS' CODE MUST MATCH THE RECEIVER CODE Switch "A" is designed for use with a garage door opener. The code set to Switch "A" must be identical to the code set in the receiver to be used in conjunction with Push-button "A".



Switch "B", under the back cover is designed for use with less-frequently changed codes, such as a community gate operated by Push-button "B". The code set into Switch "B" must be identical to the code set in the receiver to be used in conjunction with Pushbutton "B".

256 AVAILABLE CODES ON EACH SWITCH

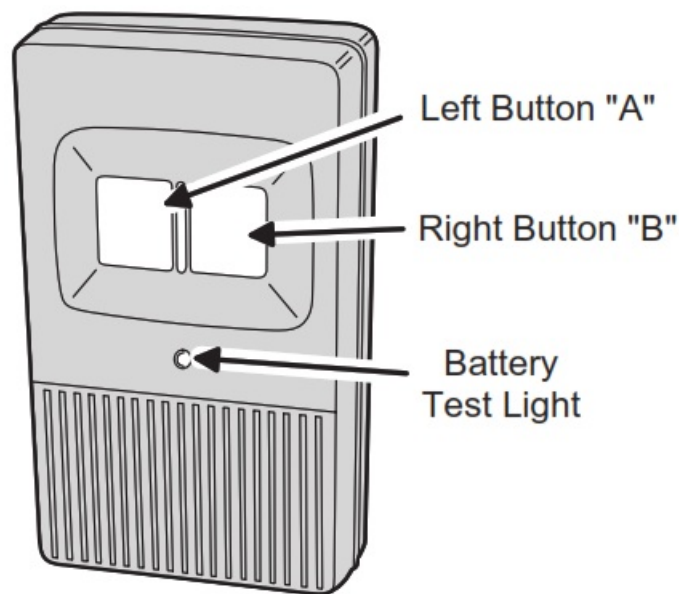
You can select any one of 256 codes on Switch "A" and also anyone of 256 codes on switch "B".

NOTE:

The manufacturer strongly recommends that you test your equipment frequently. From the time of installation, it is absolutely necessary to test the system at least once a week. It is also good practice to change the 9-volt battery every six months.

NOTE:

The transmitter transmits continuously with button depression. An LED light during transmission to indicate battery operation.



LIMITED WARRANTY

This product is warranted to the consumer against defects in material and workmanship for one year from the date of purchase. This warranty applies to first retail buyers of new devices. Warrantor will repair, or at its option, replace, any device it finds that requires service under this warranty and will return the repaired or replaced device to the consumer at the warrantor's cost. For warranty service and shipping, instructions contact the warrantor at the address shown below. Devices must be sent to the warrantor for service at the owner's expense. The remedies provided by this warranty are exclusive. Implied warranties under state law are for the one-year period of this written warranty. Some states do not allow limitations on how long an implied warranty lasts, so the above limitation may not apply to you. In order to be protected by this warranty, save your proof of purchase and send a copy with equipment should a repair be required. This warranty gives you specific legal rights, and you may also have other rights which vary from state to state.

All products returned for warranty service require a Return Product Authorization Number (RPM). Contact Nortek Security & Control LLC Technical Services at 1-800-421-1587 for an RPA# and other important details.

IMPORTANT!!!

Linear radio controls provide a reliable communications link and fill an important need in portable wireless signaling. However, there are some limitations that must be observed. * For U.S. installations only: The radios are required to comply with FCC Rules and Regulations as Part 15 devices. As such, they have limited transmitter power and therefore limited range. * A receiver cannot respond to more than one transmitted signal at a time and may be blocked by radio signals that occur on or near their operating frequencies, regardless of code settings. * Changes or modifications to the device may void FCC compliance. * Infrequently used radio links should be tested regularly to protect against undetected interference or fault. * A general knowledge of radio and its vagaries should be gained prior to acting as a wholesale distributor or dealer, and these facts should be communicated to the ultimate users.

WARNING:

Changes or modifications not expressly approved by the manufacturer could void the user's authority to operate the equipment.

NOTE: This equipment has been tested and found to comply with the limits for a Class B digital device, pursuant to Part 15 of the Federal Communications Commission (FCC) rules. These limits are designed to provide reasonable protection against harmful interference in a residential installation. This equipment generates, uses, and can radiate radio frequency energy and, if not installed and used in accordance with the instructions, may cause harmful interference to radio communications. However, there is no guarantee that interference will not occur in a particular installation. If this equipment does cause harmful interference to radio or television reception, which can be determined by turning the equipment off and on, the user is encouraged to try to correct the interference by one or more of the following measures:

- Reorient or relocate the receiving antenna.
- Increase the separation between the equipment and receiver.
- Connect the equipment into an outlet on a circuit different from that to which the receiver is connected.
- Consult the dealer or an experienced radio/TV technician for help.

FCC & IC Notice


This device contains license-exempt transmitter(s) / receiver(s) that comply with Innovation, Science, and Economic Development Canada's license-exempt RSS(s). Operation is subject to the following two conditions:

1. This device may not cause interference.
2. This device must accept any interference, including interference that may cause undesired operation of the device.

Linear[®]

USA & Canada (800) 421-1587 & (800) 392-0123
(760) 438-7000 – Toll Free FAX (800) 468-1340
www.nortekcontrol.com

Documents / Resources

	<p>Linear DT-2A Two-button Digital Transmitter [pdf] Instructions DT-2A Two-button Digital Transmitter, Two-button Digital Transmitter, Digital Transmitter</p>
---	---

References

-  [Nice North America - Home Automation Systems](#)