



# Lindab PS1-4 Versio-V Plenum Box Instruction Manual

[Home](#) » [Lindab](#) » Lindab PS1-4 Versio-V Plenum Box Instruction Manual 

## Contents

- 1 PS1-4 Versio-V Plenum Box
- 2 Lindab Versio-V
- 3 Installation Instructions
- 4 Installation instruction
- 5 Contents
- 6 Maintenance
  - 6.1 Versio-V MB
  - 6.2 Plenum box MB
- 7 Versio-V
- 8 Symbols
  - 8.1 Versio-V PS1 – PS4
  - 8.2 Versio-V PS8 – PS11
  - 8.3 Versio-V RS14
  - 8.4 Versio-V RS15 – RS16
  - 8.5 Versio-V NS19
  - 8.6 Versio-V GS23
- 9 Documents / Resources
  - 9.1 References
- 10 Related Posts

# Lindab

**PS1-4 Versio-V Plenum Box**



## **Lindab Versio-V**

Lindab Versio-V is a ventilation diffuser designed for installation in ducts to ensure proper airflow and distribution of air. It comes with a frame, faceplate, and service wires for easy installation and maintenance.

### **Installation Instructions**

1. Mount the frame of the diffuser in the duct using the instructions provided in the manual.
2. Attach the faceplate to the frame using the adjustable clips provided.
3. Connect the service wires to the corresponding terminals on the diffuser according to the wiring diagram provided in the manual.
4. For cleaning, demount the diffuser from the frame by pressing the clips and pull it out. You can vacuum clean it using a smooth nozzle brush or wipe it off with a sponge or a damp soft cotton cloth.

#### **Note:**

- In Sweden, only the 315-315 diffuser is available with some limitations.
- The Plenum box MB and Damper options are additional accessories that can be used with Versio-V for better airflow control.
- Lindab products, systems, product and product group designations are protected by intellectual property rights (IPR).

For more detailed instructions and specifications, refer to the user manual provided with the product.

### **Installation instruction**

#### **Contents**

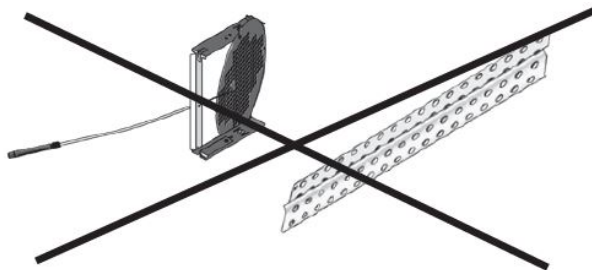
No Damper

## Maintenance

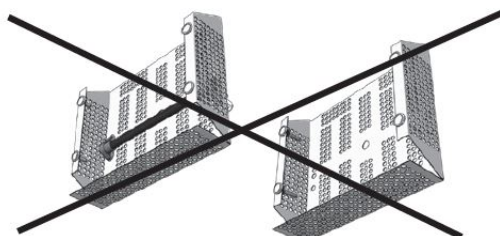
The diffusers can be demounted and vacuum cleaned by using a smooth nozzle brush or wiped off by using a sponge or a damp soft cotton cloth

### Versio-V MB

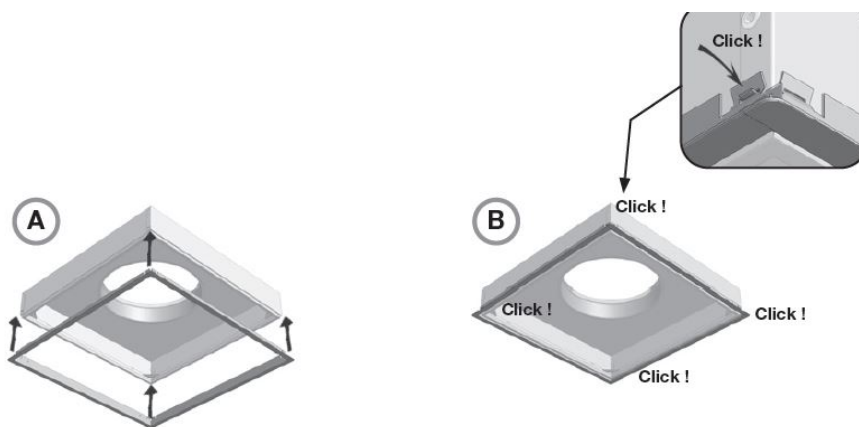
#### No Damper



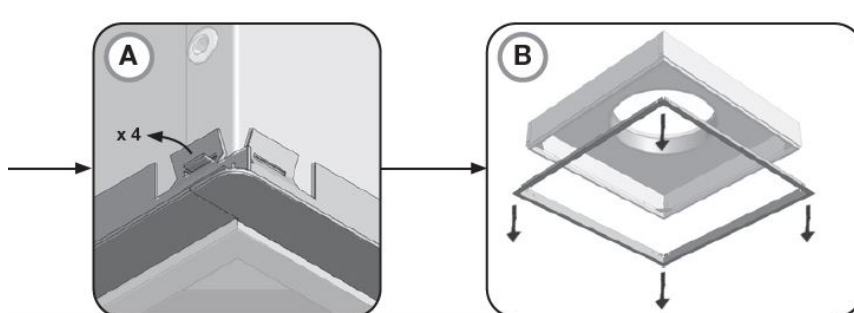
#### No Measuring outlet



## Frame



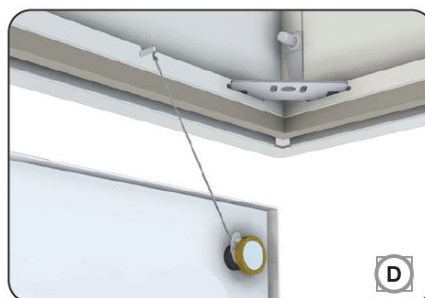
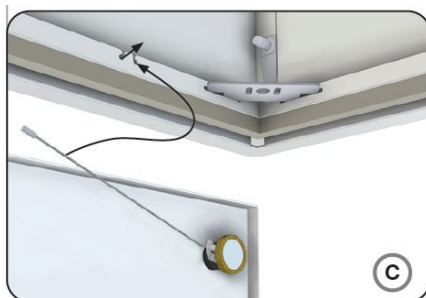
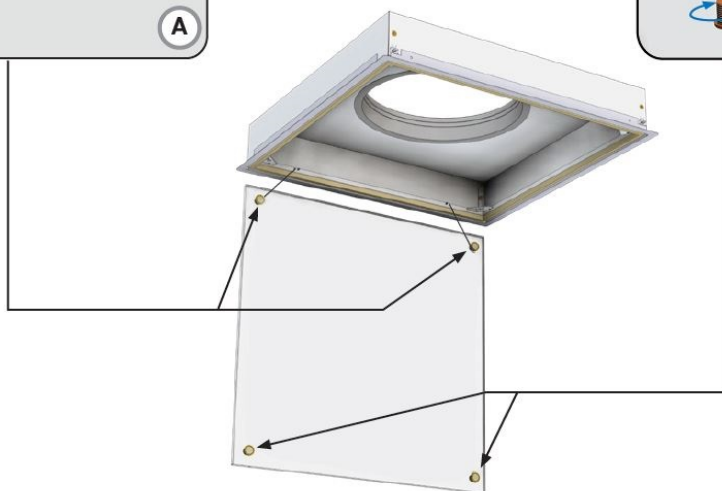
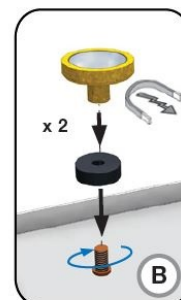
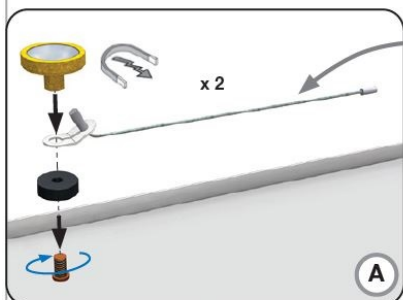
## Demounting

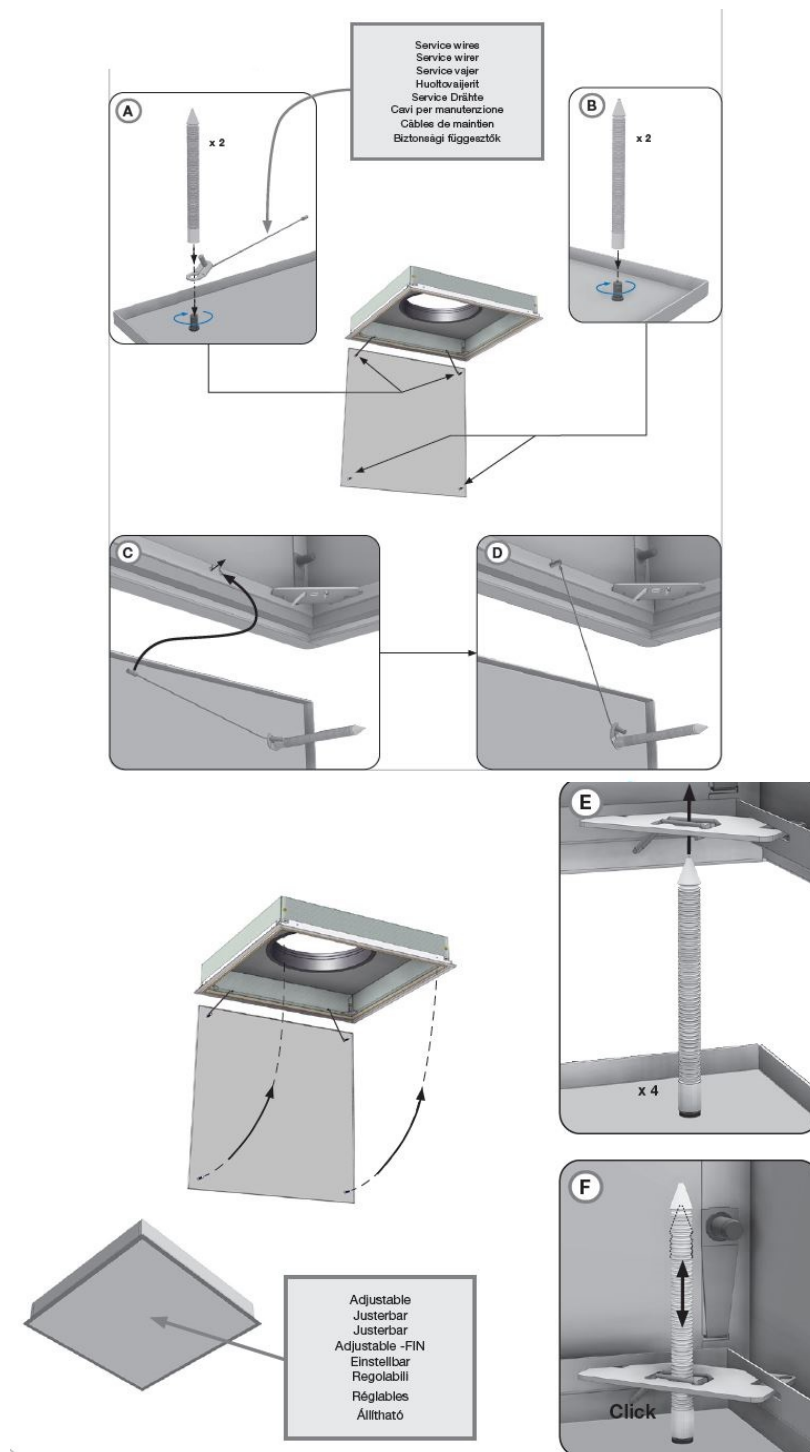


## Faceplate

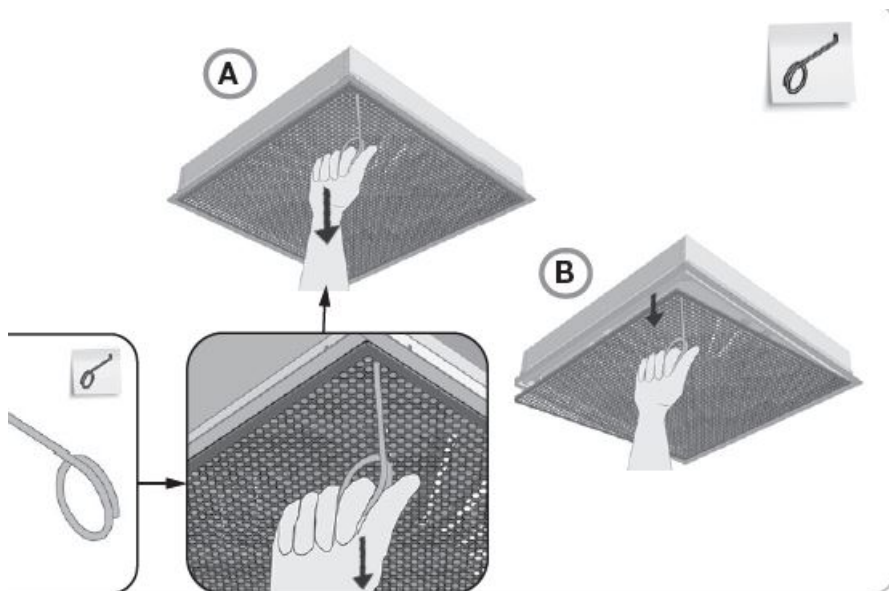


Service wires  
Service wirer  
Service vajer  
Huoltovaijerit  
Service Drähte  
Cavi per manutenzione  
Câbles de maintien  
Biztonsági függesztők



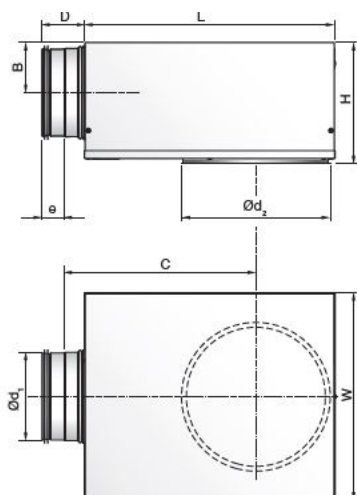


## Demounting



## Plenum box MB

## Damper options

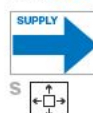


Ød <sub>1</sub> mm	Ød <sub>2</sub> mm	B	C	D	e mm	H	L	W	m kg
100	100	62	245	78	40	163	310	260	2,6
100	125	62	245	78	40	163	310	260	2,6
100	160	62	245	78	40	163	310	260	2,6
125	125*	75	291	78	40	188	376	310	3,7
125	160	75	291	78	40	188	376	310	3,7
125	200	75	291	78	40	188	376	310	3,7
160	160*	92	352	78	40	222	459	380	5,5
160	200	92	352	78	40	222	459	380	5,5
160	250	92	352	78	40	222	459	380	5,5
200	200*	112	425	78	40	263	565	460	7,3
200	250	112	425	78	40	263	565	460	7,3
200	315	112	425	78	40	263	565	460	7,3
250	250*	137	514	118	60	313	698	540	10,6
250	315	137	514	118	60	313	698	540	10,6
250	400	137	514	118	60	313	698	540	10,6
315	315*	170	675	118	60	378	858	540	13,5
315	400	170	675	118	60	378	858	540	13,5

\* ) Ød<sub>1</sub> = Ød<sub>2</sub> Not available in Sweden, except 315-315 (with some diffusers).

\* ) Ød<sub>1</sub> = Ød<sub>2</sub> Ej tillgänglig i Sverige, undantaget 315-315 (med vissa don).  
 PC6, PC7, RC14, RC15, NC19, LCC, LCP, LKP  
 PS1-V, PS8-V RS14-V, RS15-V, RS16-V, GS23-V

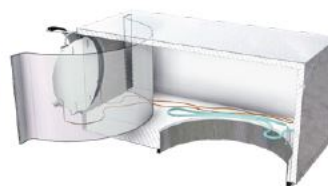
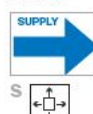
### MBB-S



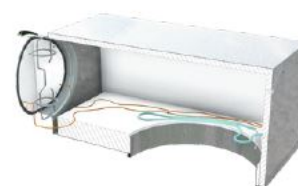
### MBB-E



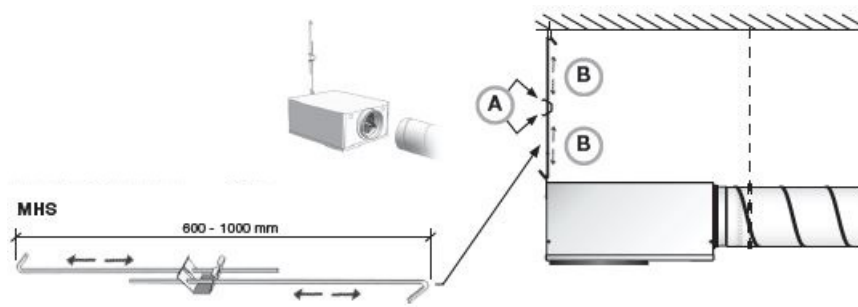
### MBC



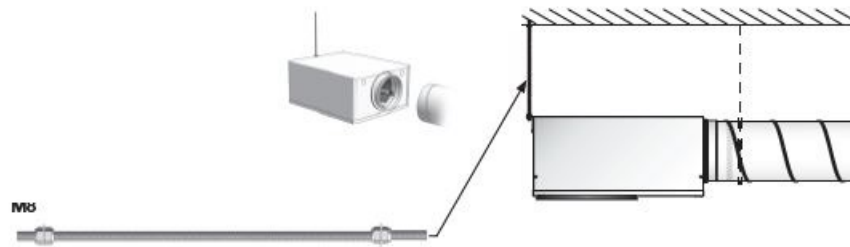
### MBE



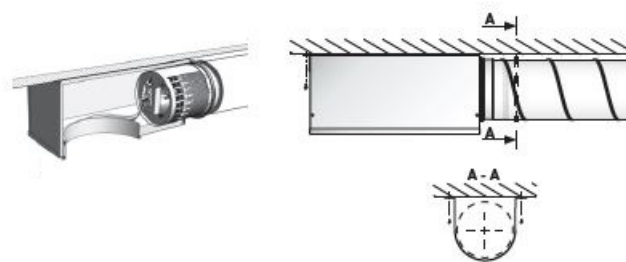
## Mounting of MB – MHS



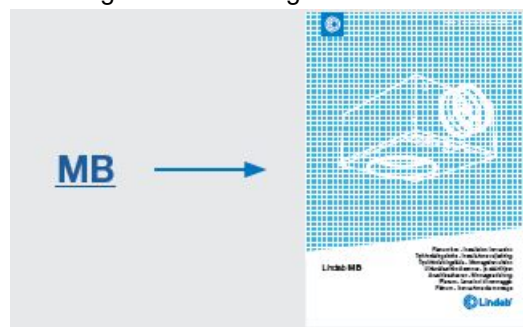
## Threaded bar



## Directly against ceiling

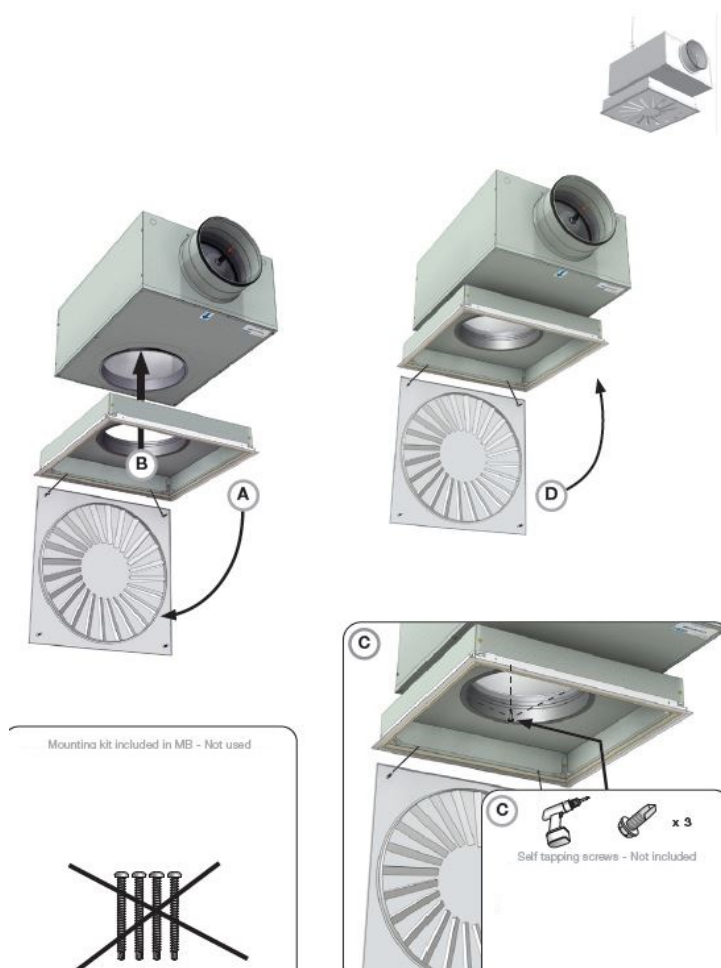


## Mounting of MB, details go to – Mounting -and balancing instruction



## Mounting of Versio-V + MB



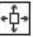




## Versio-V

### Mounting of Versio-Vinduct

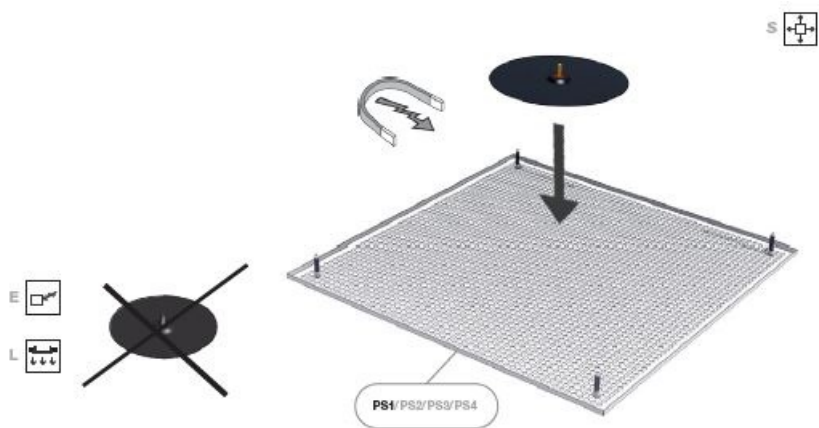




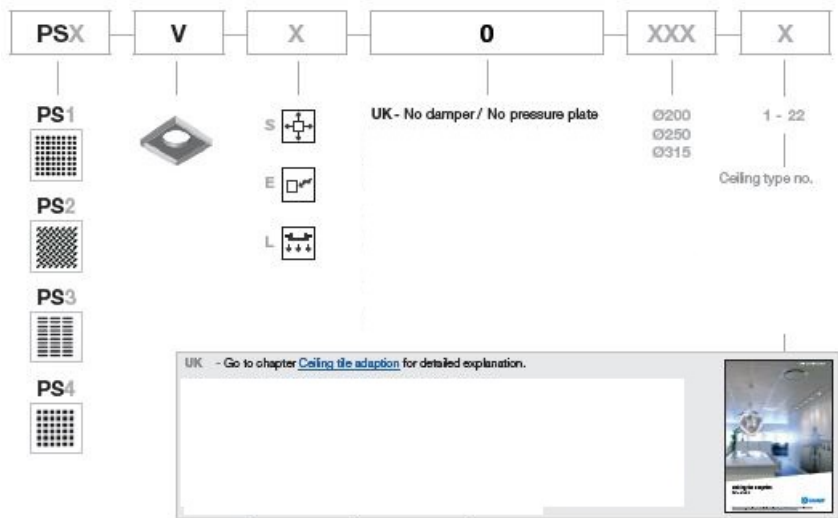
- S  Supply air
- E  Extract air
- L  Low impulse principle

**Versio-V PS1 – PS4**

**Deflector plate**



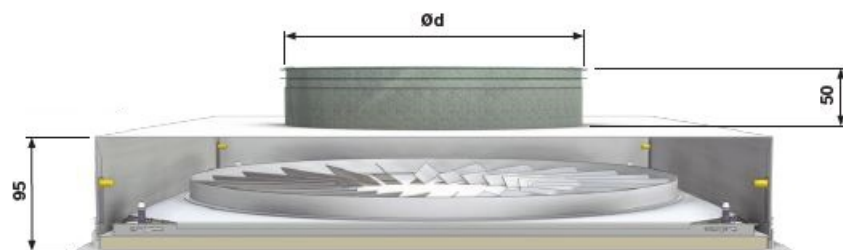
**Order code**



**Versio-V PS8 – PS11**

**Measure / weight**

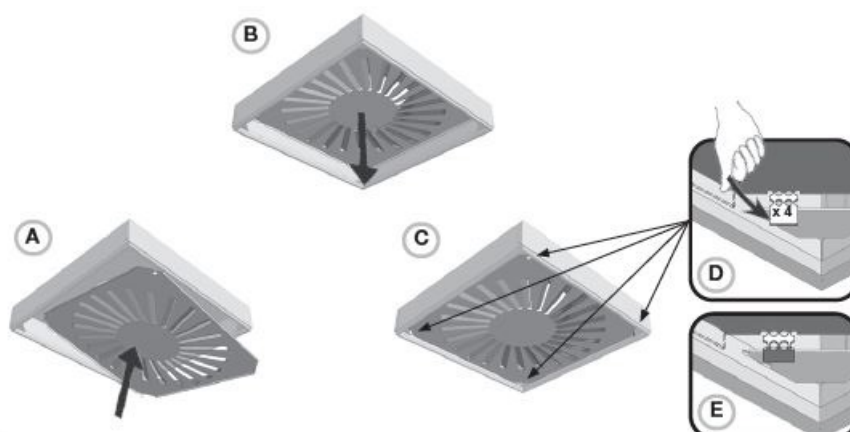
## PS8-V



Ød mm	Pattern - Mønster - Mönster - Malls - Muster - Modello - Taille - Minta	m kg
160	300	-
200	400	-
250	500	-
315	600	-



## Rotation insert

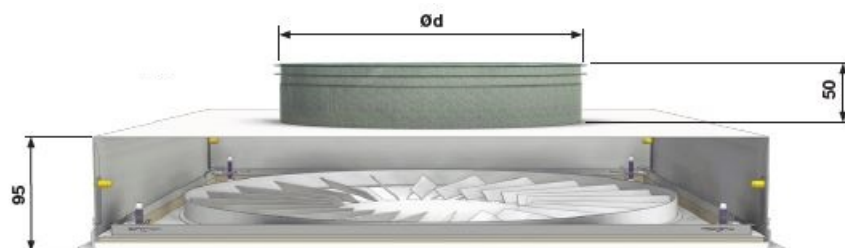


## Order code

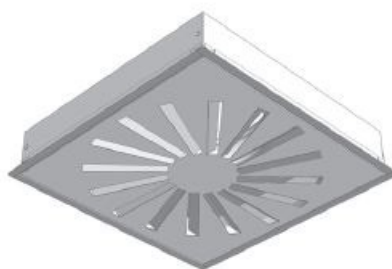
PSX	V	S	0	XXX	X
PS8 		S 	UK - No damper / No pressure plate	Ø160 Ø200 Ø250 Ø315	1 - 22 Ceiling type no.
PS9 					
PS10 					
PS11 					

Versio-V RS14

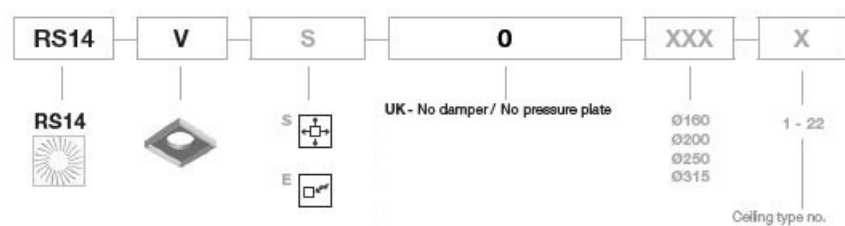
Measure / weight




Ød mm	Pattern - Manster - Mönster - Malli - Muster - Modello - Taille - Minta	m kg
160	400	-
200	400	-
250	500	-
315	600	-



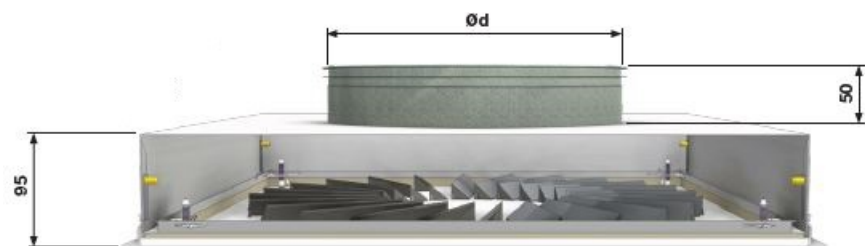
## Order code



UK - Go to chapter [Ceiling tile adaption](#) for detailed explanation.


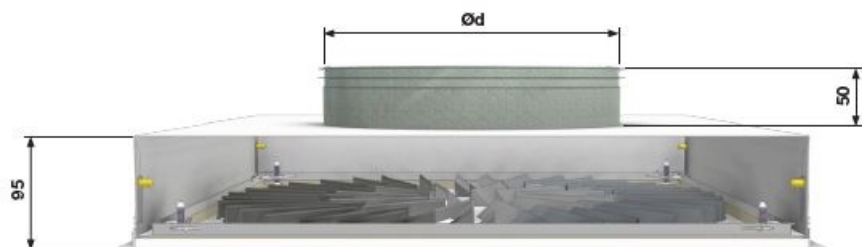
Versio-V RS15 – RS16

Measure / weight



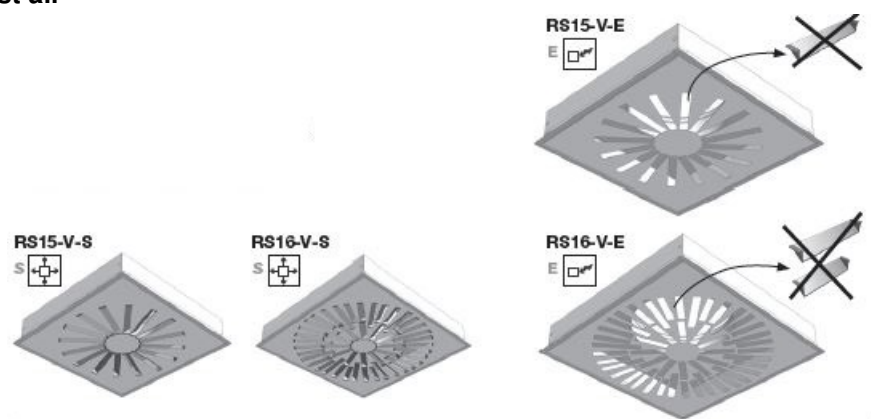
Ød mm	Pattern - Muster - Mönster - Mali - Muster - Modello - Taille - Mirta	m kg
200	400	-
250	500	-
315	600	-

### RS16-V

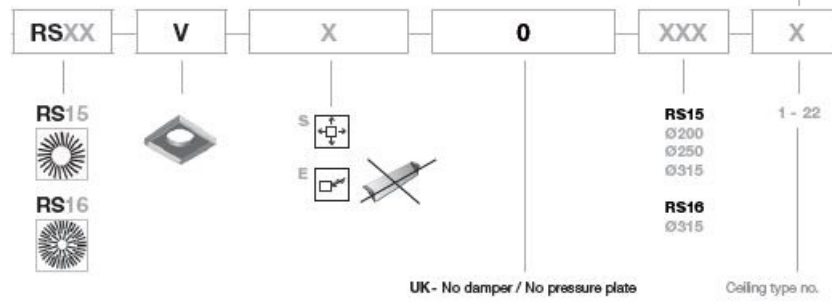


Ød mm	Pattern - Muster - Mönster - Mali - Muster - Modello - Taille - Mirta	m kg
315	600	-

## Supply air / Exhaust air

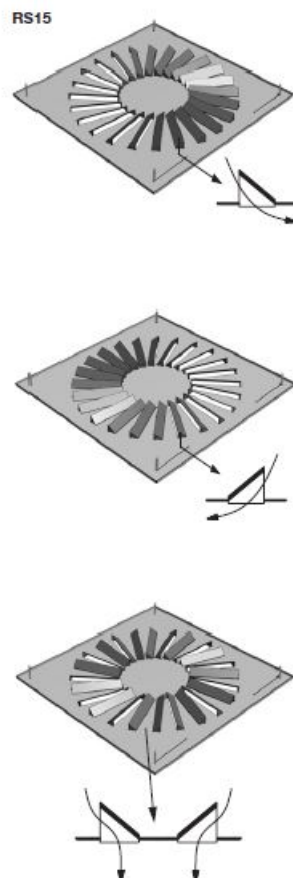


## Order code



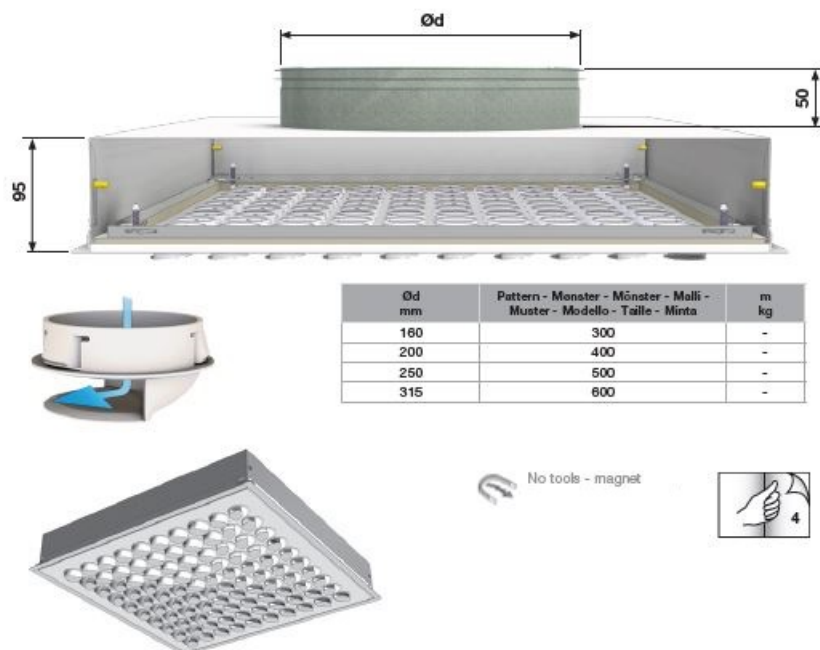
## Supply air – Adjustable bars

Standard – Inward swirl  
 Outward swirl  
 Vertical supply air



Versio-V NS19

Measure / weight



## Order code

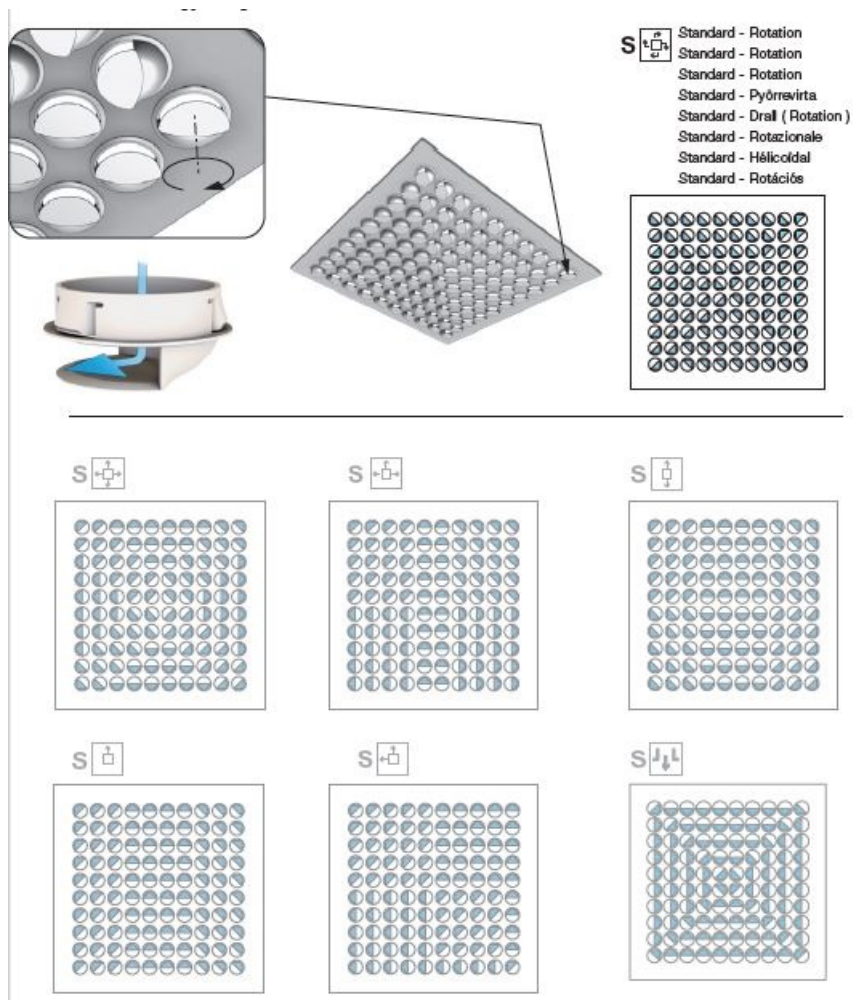
NS19	V	S	0	XXX	X
NS19				Ø160 Ø200 Ø250 Ø315	1 - 22
		UK - No damper / No pressure plate DK - Ingen spjæld / Ingen trykplade SE - Utan spjäll / utan mättryckplatta FI - Ei mitään vaimenninta / Ei-paine-lautanen DE - Keine Meß- / Drosselrichtung. IT - Nessun di pressione nessun/ Più umido piatto FR - Pas de registre / pas de prise de pression HU - Nincs szabályozó / Nincs torlólap		Ceiling type no. Lofttype nr. Undertaks typ nr. Alakaton tyyppi no. Deckentyp Nr. Tipo di soffitto n. Plafond type n° Álmennyezeti típus száma	

UK - Go to chapter [Ceiling tile adaption](#) for detailed explanation.  
 DK - Se afsnittet [Lofttilpassning](#) for detaljeret beskrivelse.  
 SE - Läs under kapitlet [Undertaksanpassning](#) för detaljerad förklaring.  
 FI - Läätielöje löytyy [Alakattosovitusvaihtoehdot](#) -asennusohjeesta.  
 DE - Gehen Sie zu Kapitel [Deckenanpassung](#) für detaillierte Erklärung.  
 IT - Per ulteriori informazioni fare riferimento al capitolo [Piastra modulare per costruzioni](#)  
 FR - Voir le chapitre [Synthèse de plafond](#) pour les explications détaillées.  
 HU - [Mennyezeti rendszerek](#) fejezetnél részletes magyarázatot.

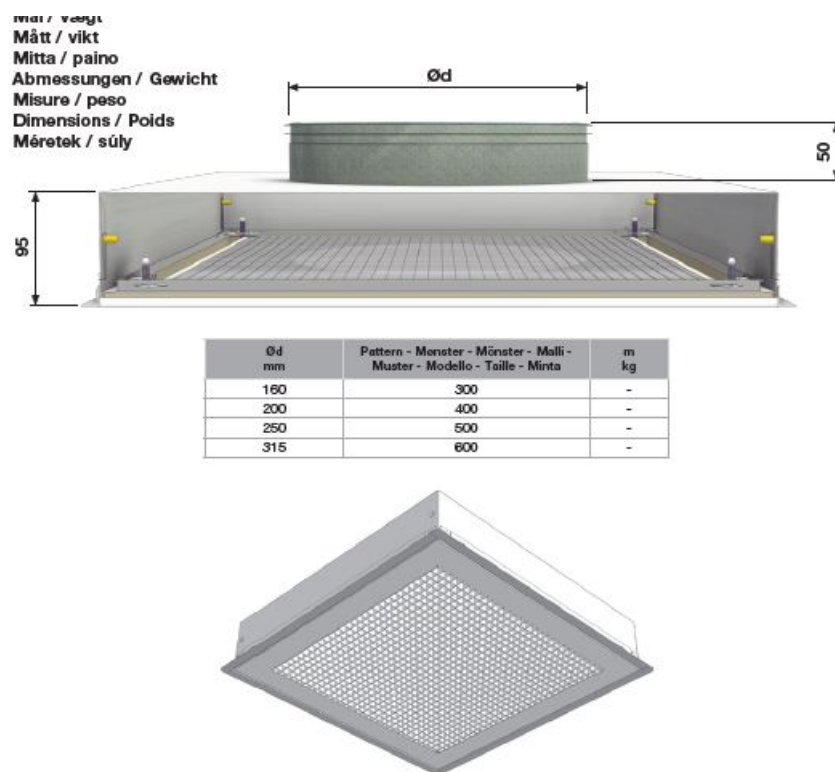
Versio-V GS23

Air patterns – Individually adjustable nozzles

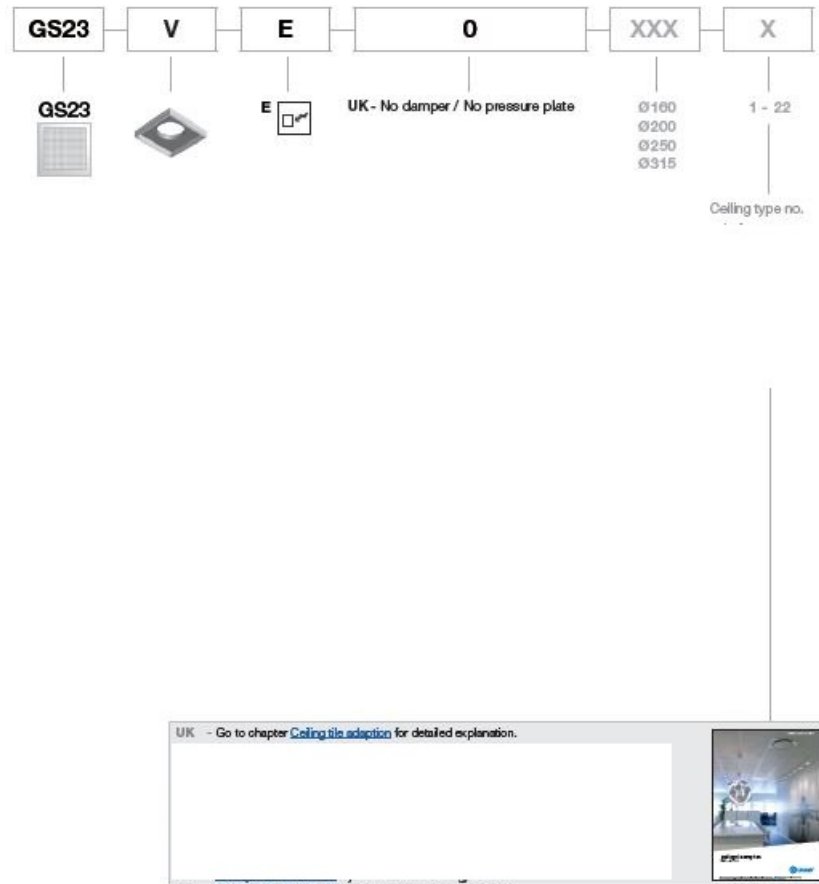




## Measure / weight



## Order code

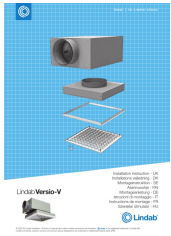


Most of us spend the majority of our time indoors. Indoor climate is crucial to how we feel, how productive we are and if we stay healthy. We at Lindab have therefore made it our most important objective to contribute to an indoor climate that improves people's lives. We do this by developing energy-efficient ventilation solutions and durable building products. We also aim to contribute to a better climate for our planet by working in a way that is sustainable for both people and the environment.



[www.lindab.com](http://www.lindab.com)

**Documents / Resources**



## [Lindab PS1-4 Versio-V Plenum Box](#) [pdf] Instruction Manual

PS1-4, PS8-11, RS14, RS15-16, NS19, GS23, PS1-4 Versio-V Plenum Box, PS1-4, Versio-V Plenum Box, Box, Plenum Box

## References

- [© Lindab | For a better climate - Lindab](#)