



Lindab Pascal Operate User Guide

[Home](#) » [Lindab](#) » Lindab Pascal Operate User Guide 



Lindab Pascal Operate
Getting started guide
Regula Master HTML
Regula Combi version 1.5
User Guide



Contents

- 1 [Pascal Operate](#)
- 2 [Connect your router](#)
- 3 [Open web browser](#)
- 4 [Login page](#)
- 5 [Setup Wizard](#)
- 6 [Overview menu](#)
- 7 [Settings menu – Global RM](#)
- 8 [Settings menu – Local RMs](#)
- 9 [Settings menu – Supply](#)
- 10 [Settings menu – Extract](#)
- 11 [Settings menu – Flow & Temperature](#)
- 12 [Documents / Resources](#)
- 13 [Related Posts](#)

Pascal Operate

Lindab Pascal Operate

Get started with Pascal Operator

Items you need:

- PC with HTML5 web browser, like Chrome, Firefox, Edge or Safari.
- Router with DHCP server / or providing static IP addresses.
- Ethernet cables

Connect your router

Connect your router to PC and to Regula Master.

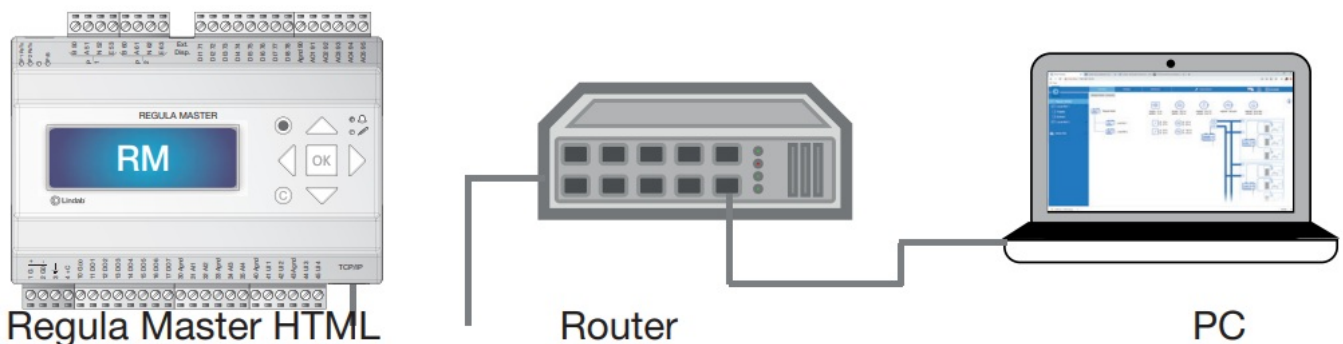
Regula Master will get a IP-address, which is visible in the top main display menu by pressing right arrow. If you connect to an internal network you just connect to the network (via Wi-Fi or cable).

In many cases a static IP address is needed from the local network. To get this the local IT-support must be involved.

The static IP is set manually on the RM with push buttons.

Menu: Configuration-> Communication-> TCP/IP-> Set static IP

Get connected



* **NOTE** ! All Regula Master comes with same PLA:ELA from factory. Change these before starting setup. It is possible to do in three ways.

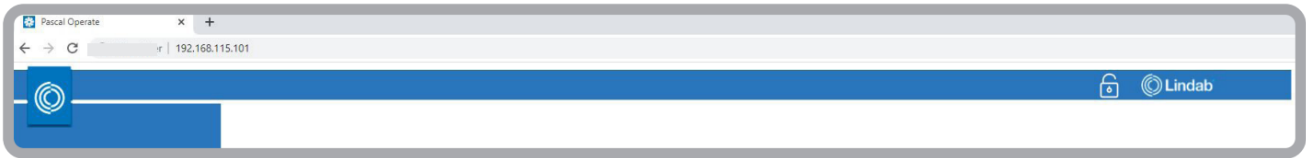
- From display. In the top main menu click right arrow twice and change. Do this on all RM.

- From IP login to all Regula Masters, in settings.
- With Application loader.

Example:
Global RM: 123:123
Local RM 1: 1:1
Local RM 2: 2:2

Open web browser

Open web browser and type in the IP-address of the Regula Master.



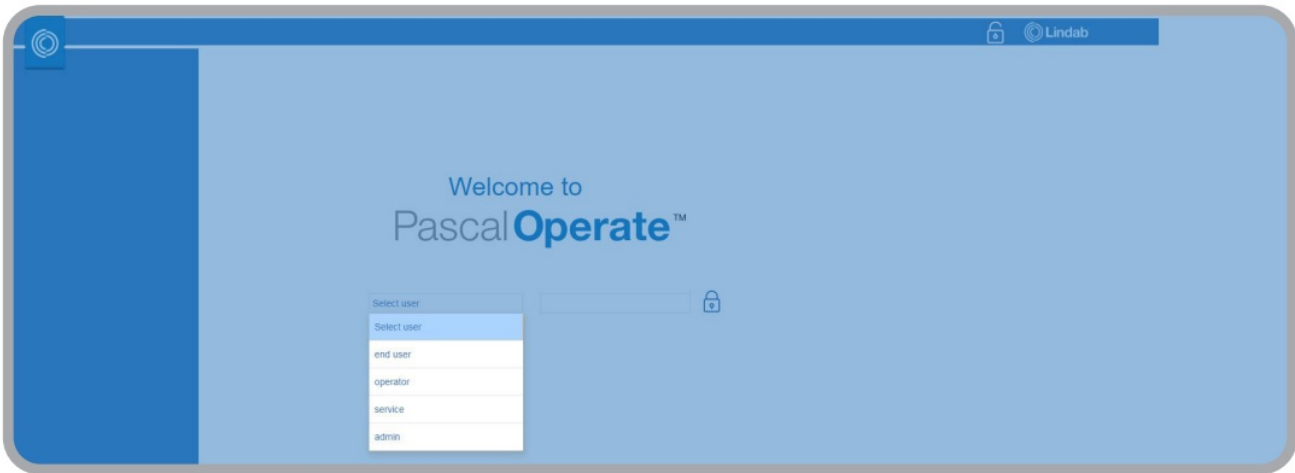
Login page

Login page for Lindab Pascal Operate will appear as a viewer access with:

User/Passwords:
End user: lindab
Operator: operate
Service: pascal

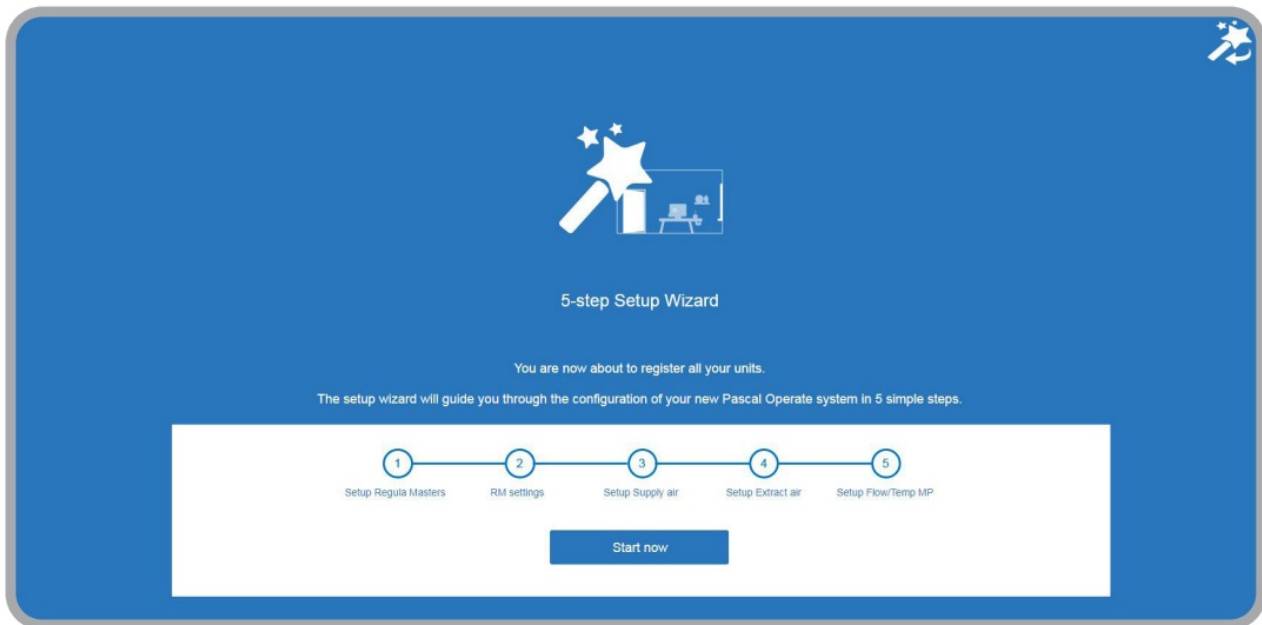
Access from the user logins:

| | |
|-----------|---|
| End user: | Overview, setup values and indoor climate values in all zones / rooms. Access to Setup-Wizard. |
| Operator: | Also setup of standard values. |
| Service: | Also advanced settings, full parrameterlist, fan settings and more. |
| Admin: | Only Lindab Technician. |



Setup Wizard

At first login to the Global RM it enter the Setup Wizard.
This is a walk-through setup guide.



Lindab Pascal Operate

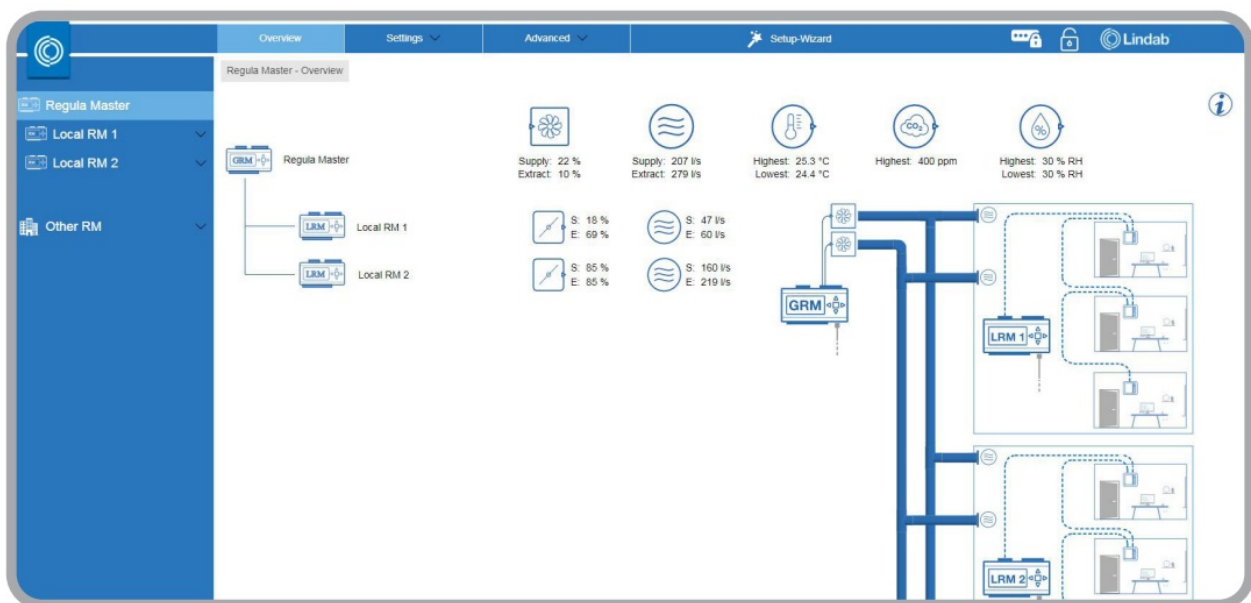
Menus and features in Pascal Operate

Overview menu

Overview menu gives access to view the full system from Global RM to Local RM and down to all Supply and Extract Controllers and Flow & Temperature Units.

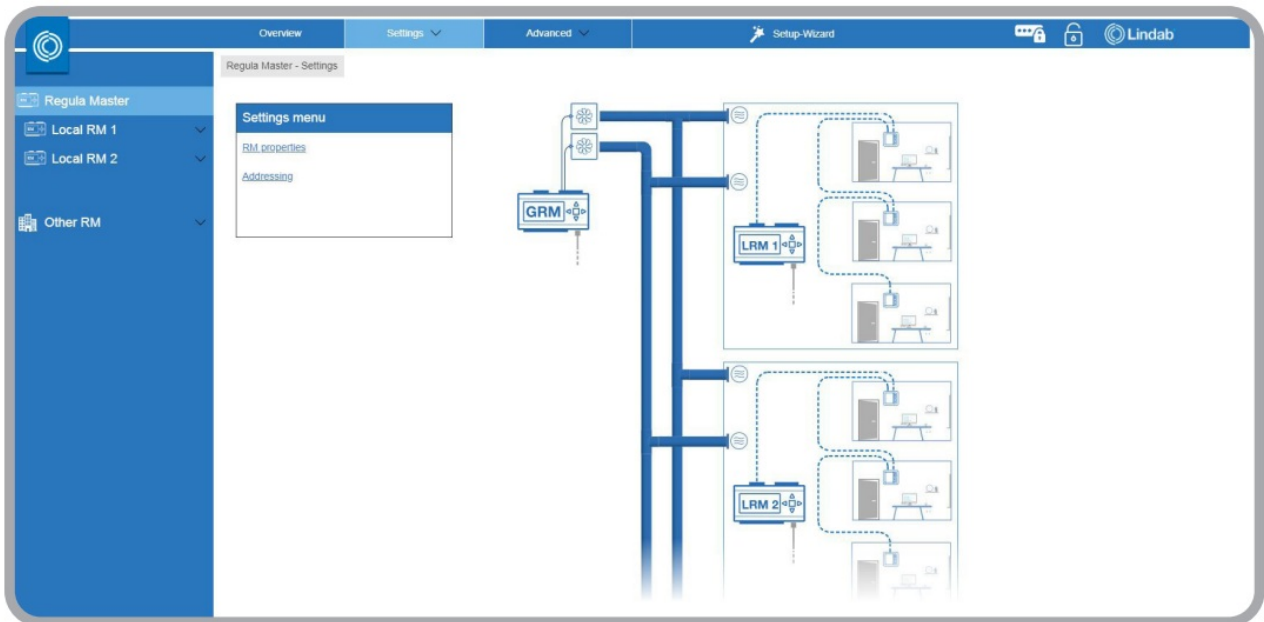
At the Overview Top is showed System Values according to the sensors in the system.

Access lower levels by clicking the left menu or the icons in the string-structure.



Settings menu – Global RM

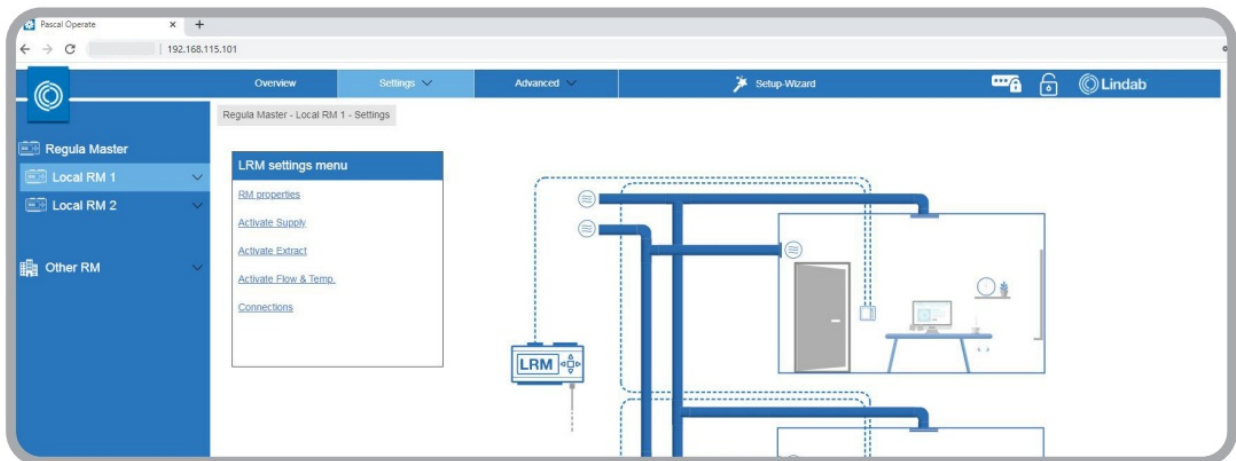
Go through the menus to connect and name (ID) the Global RM to Locals.



Settings menu – Local RMs

Go through the menus to activate the Supply, Extract and Flow & Temperature units in the system. Have the PLA:ELA addresses ready and name all units (ID).

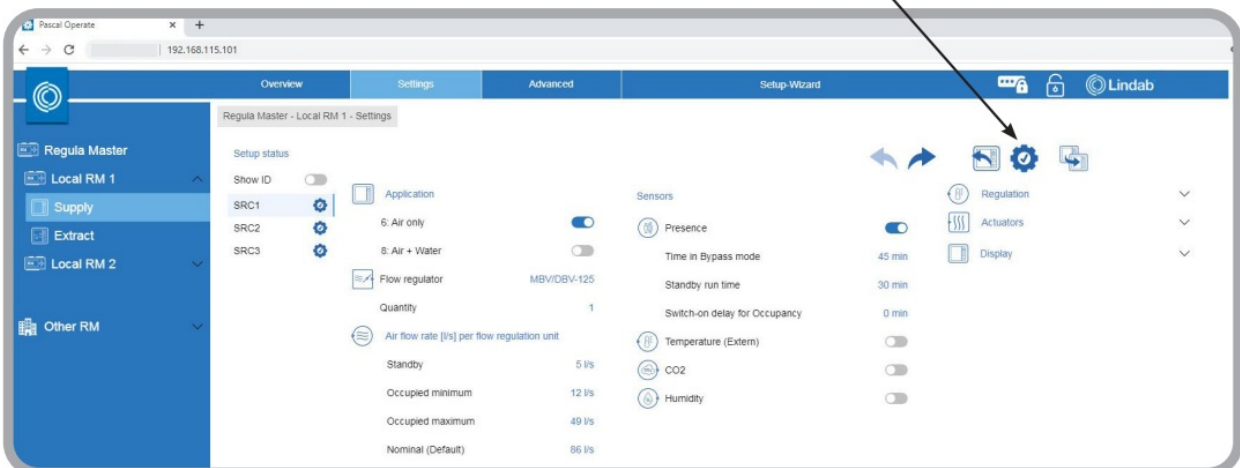
NOTE ! When activate Extract remember to set type. ERC is with Regula Combi, EUC is FTCU connected direct to LRM.



Settings menu – Supply

Setup all Supply units.

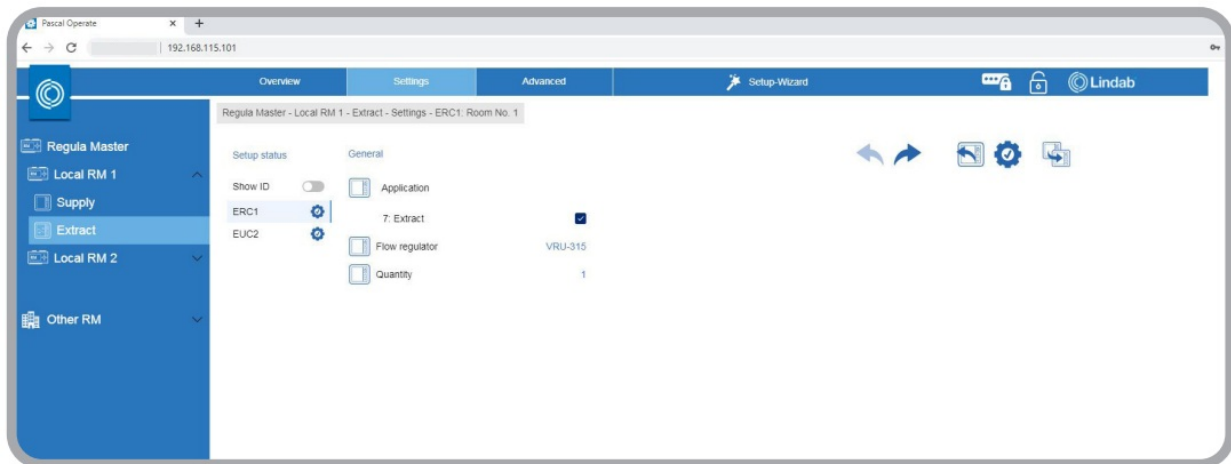
Go through the steps in the menu. When all is set in the controller, click “Confirm settings” to load to controller.



Settings menu – Extract

Apply the type/size and quantity of the flow regulators.

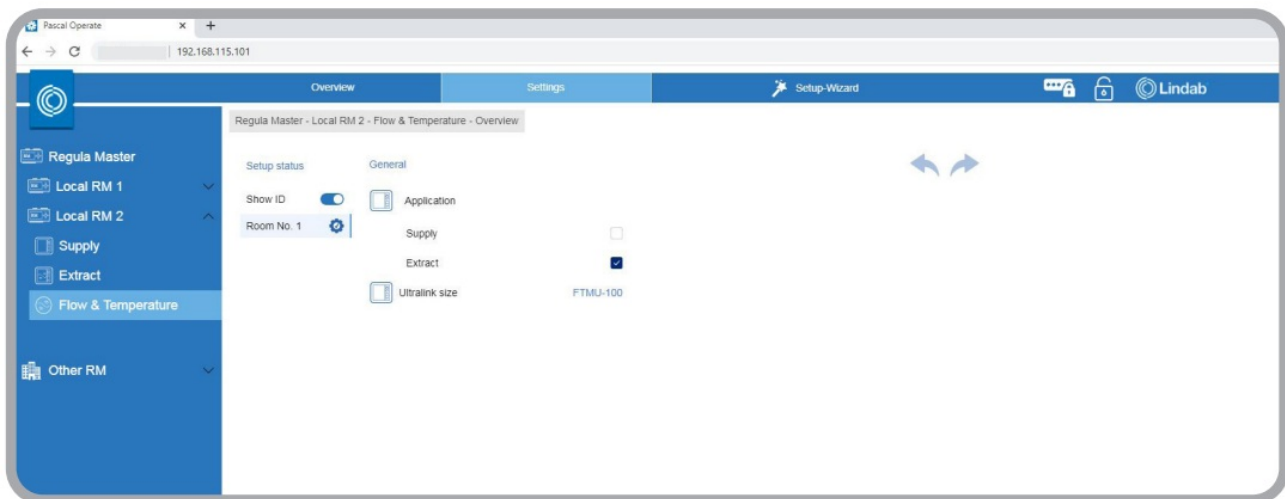
NOTE ! EUC equals one FTCU.



Settings menu – Flow & Temperature

Apply the size of the Flow & Temperature measuring unit (FTMU).

NOTE ! Supply / Extract is for future use.





Most of us spend the majority of our time indoors. Indoor climate is crucial to how we feel, how productive we are and if we stay healthy.

We at Lindab have therefore made it our most important objective to contribute to an indoor climate that improves people's lives. We do this by developing energy-efficient ventilation solutions and durable building products. We also aim to contribute to a better climate for our planet by working in a way that is sustainable for both people and the environment.

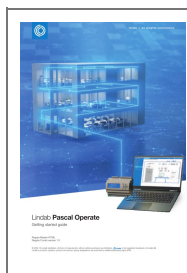
Lindab | For a better climate

Lindab reserves the right to make changes without prior notice

2020-09-07

www.lindab.com

Documents / Resources



[Lindab Pascal Operate](#) [pdf] User Guide
Pascal Operate, Operate