



Lindab OLR Overflow Unit Installation Guide

[Home](#) » [Lindab](#) » Lindab OLR Overflow Unit Installation Guide 

Contents

- [1 Lindab OLR Overflow Unit](#)
- [2 Product Usage Instructions](#)
- [3 Overview](#)
- [4 Dimensions](#)
- [5 Horizontal installation](#)
- [6 Maintenance](#)
- [7 Documents / Resources](#)
 - [7.1 References](#)
- [8 Related Posts](#)



Lindab OLR Overflow Unit



Specifications

- Brand: Lindab
- Product Name: OLR Overflow Unit
- Dimensions
 - 300mm x 20mm
 - 500mm x 19.5mm
 - 700mm x 2.3mm
 - 850mm x 3.0mm
- Weight
 - 300mm – 1.5kg
 - 500mm – 2.3kg
 - 700mm – 3.0kg
 - 850mm – 3.6kg

Product Usage Instructions

Installation

1. Refer to the installation instructions provided in the manual for proper installation of the Lindab OLR Overflow Unit.
2. Ensure the unit is securely fixed according to the specified dimensions for your chosen variant.
3. Select appropriate screws based on the type of wall and the variant of the product being installed.
4. Contact your local Lindab dealer for further guidance if needed.

Maintenance

To maintain the unit, follow these steps

- Remove the sound attenuation baffles on both sides of the wall for cleaning of internal parts.
- Wipe the visible parts of the unit with a damp cloth for regular cleaning.

FAQ

- **Q: How can I clean the Lindab OLR Overflow Unit?**
 - A: You can remove the sound attenuation baffles on both sides of the wall for cleaning of internal parts. The visible parts of the unit can be wiped with a damp cloth.
- **Q: Can I install the unit myself?**
 - A: Proper installation is crucial for the functionality of the unit. It is recommended to refer to the installation instructions provided and, if needed, contact your local Lindab dealer for assistance.
- **Q: Are there different variants of the Lindab OLR Overflow Unit?**
 - A: Yes, there are variants available with different dimensions and weight specifications. Ensure you select the appropriate variant for your specific requirements.

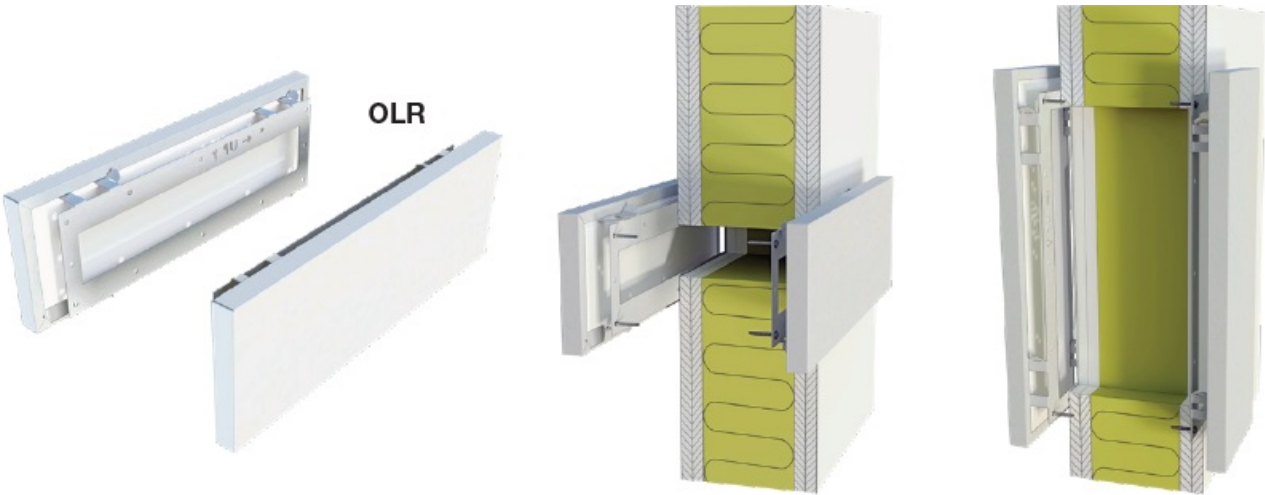
Overflow unit – Installation instruction

registered trademark of Lindab AB.

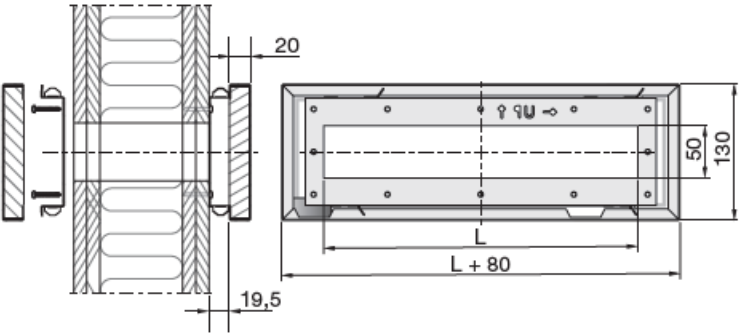
Lindab’s products, systems, product and product group designations are protected by intellectual property rights (IPR).

lindab | for a better climate
OLR

Overview



Dimensions

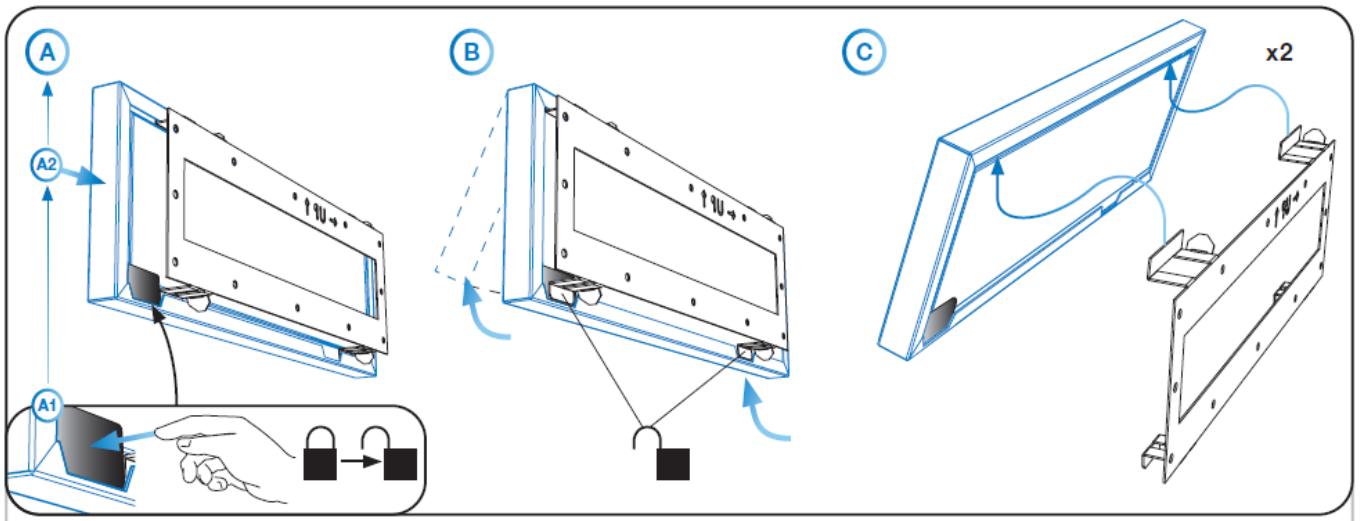
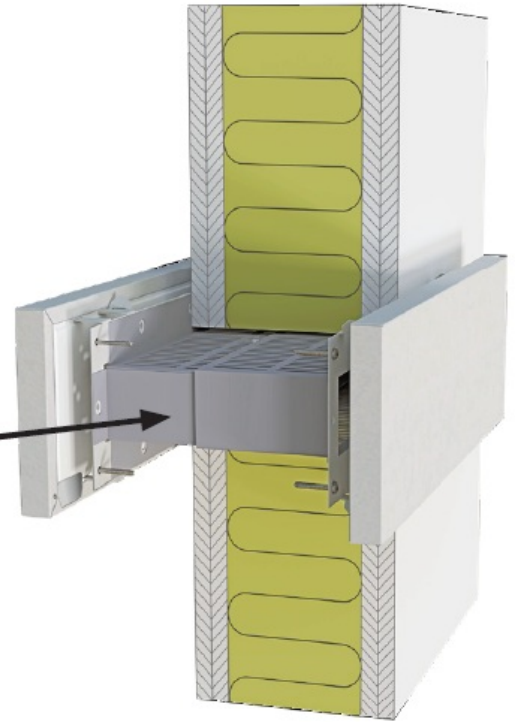
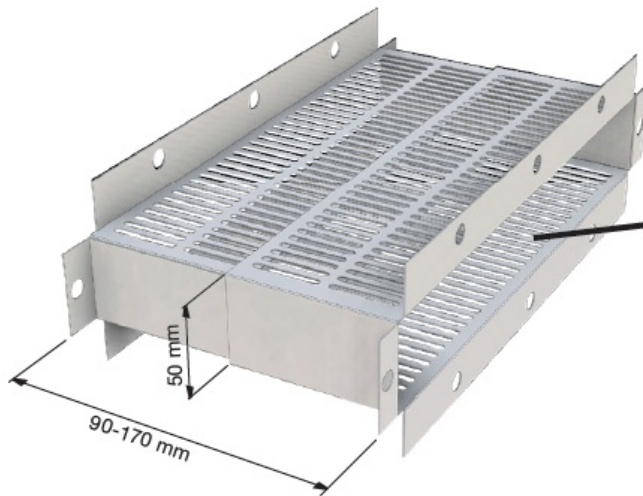


	L	m
OLR	mm	kg
300	300	1,5
500	500	2,3
700	700	3,0
850	850	3,6

Cutout dimension L+5 x 55 mm

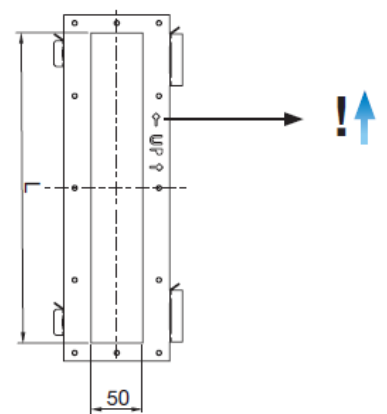
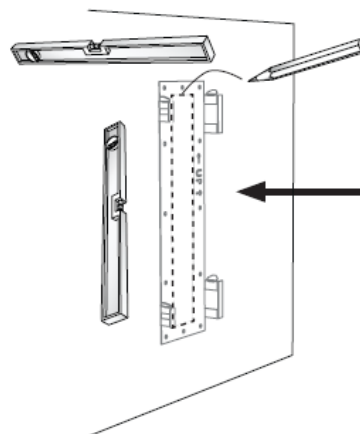
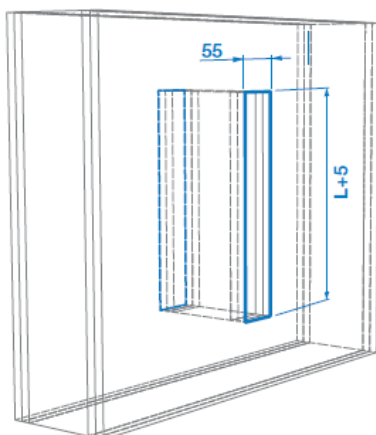
Accessories

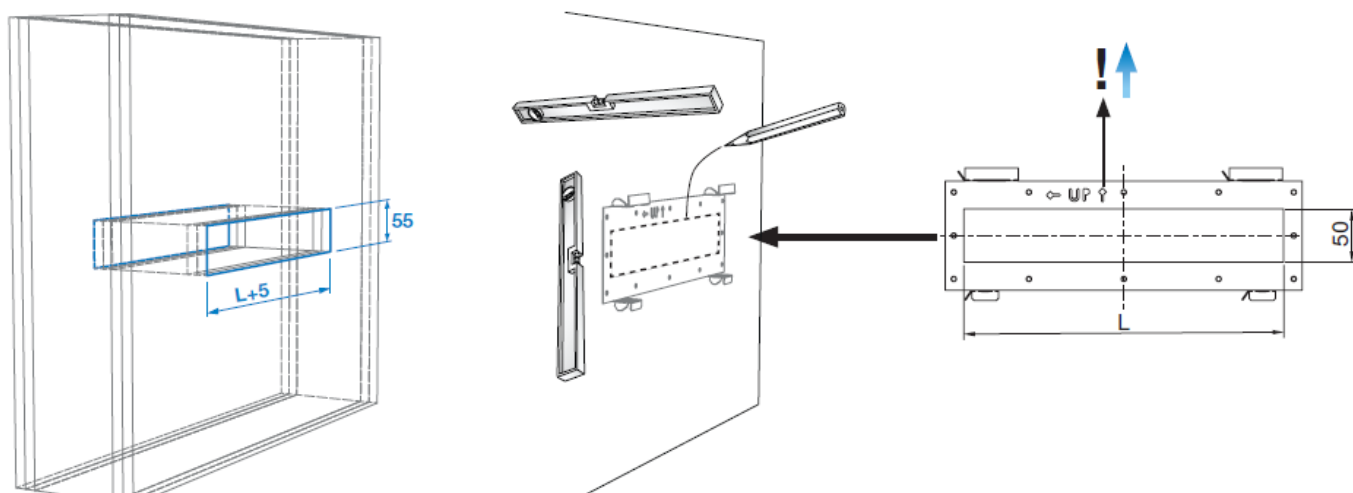
OLRZ



Cutout dimension

Cutout dimension $L+5 \times 55$ mm

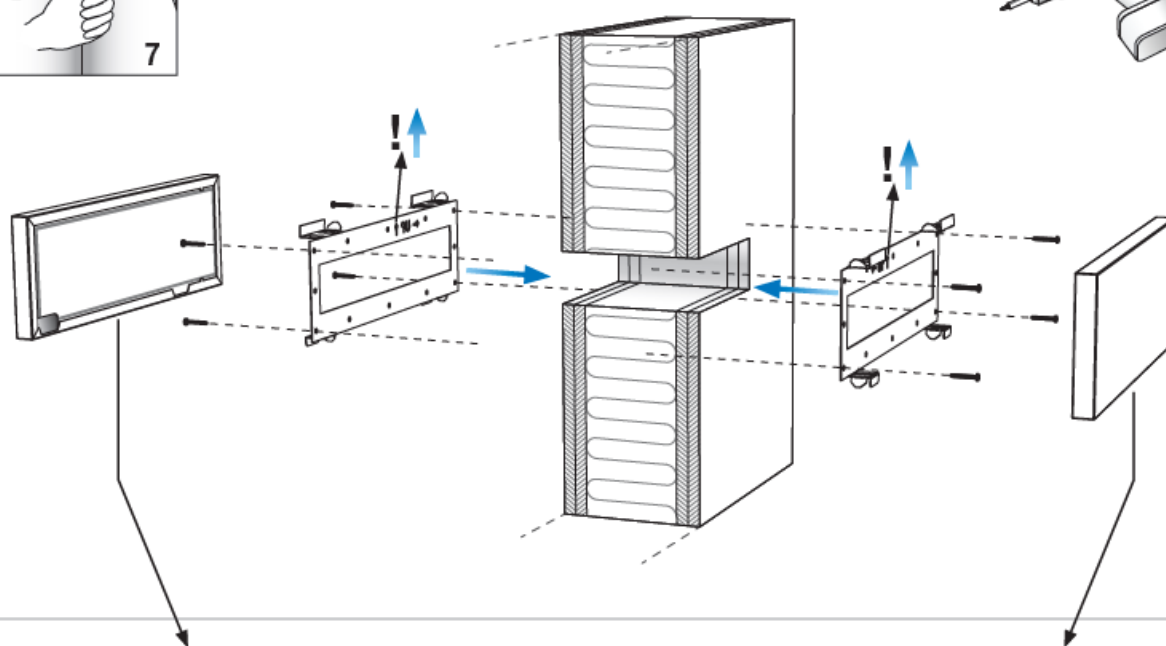
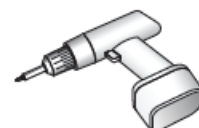


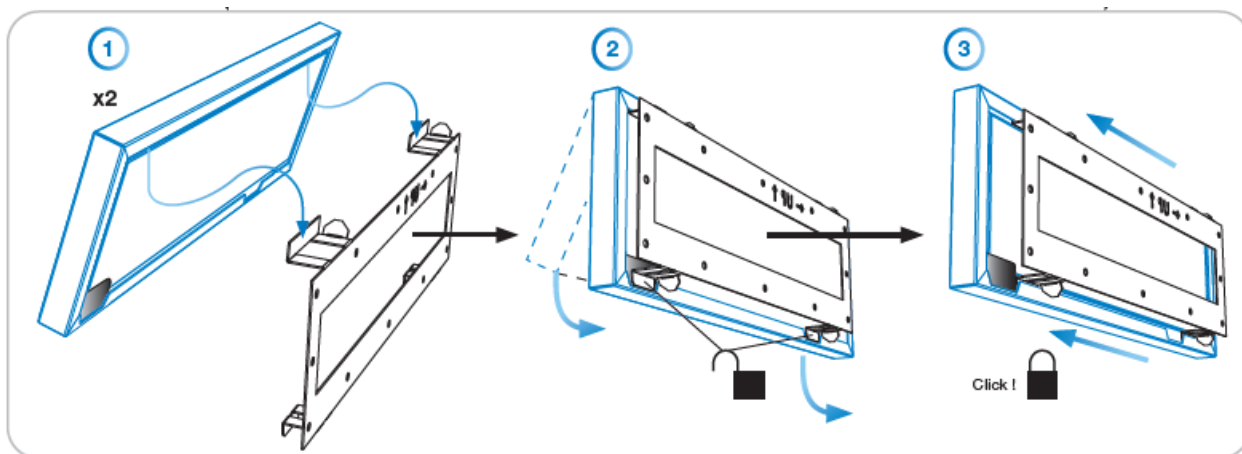


Horizontal installation



(A) + (B) + (C)

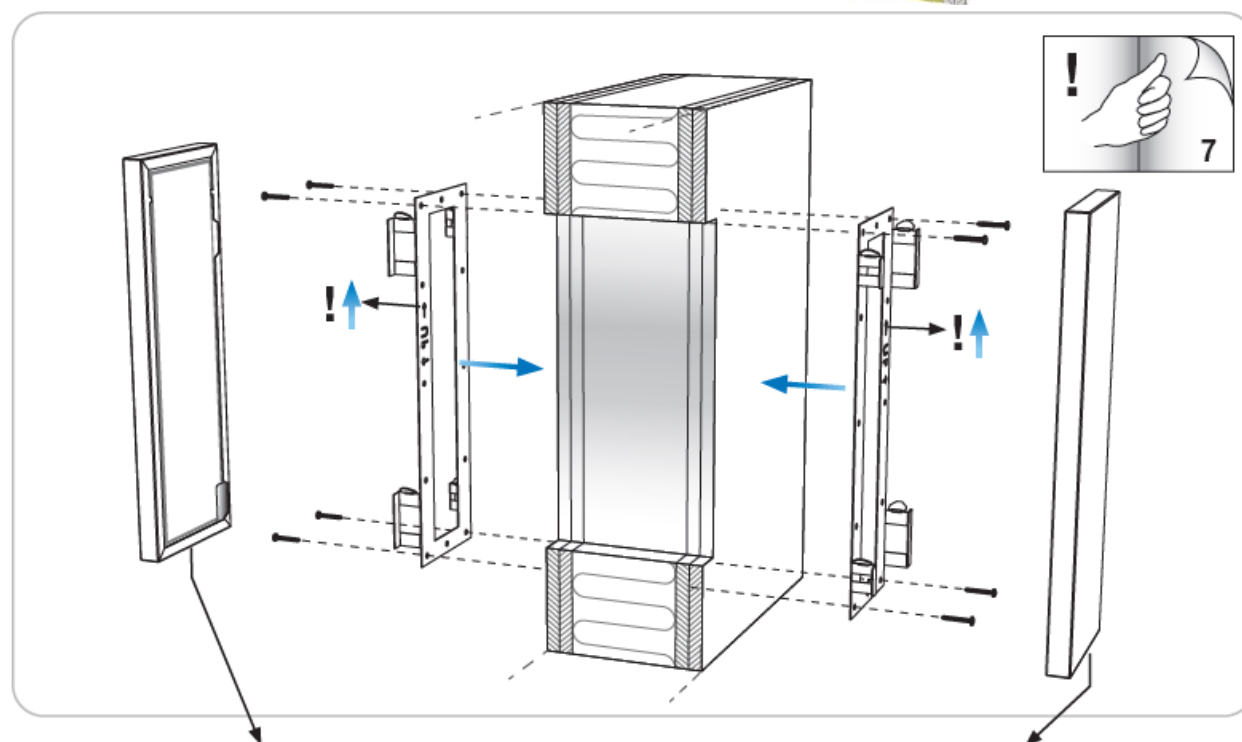


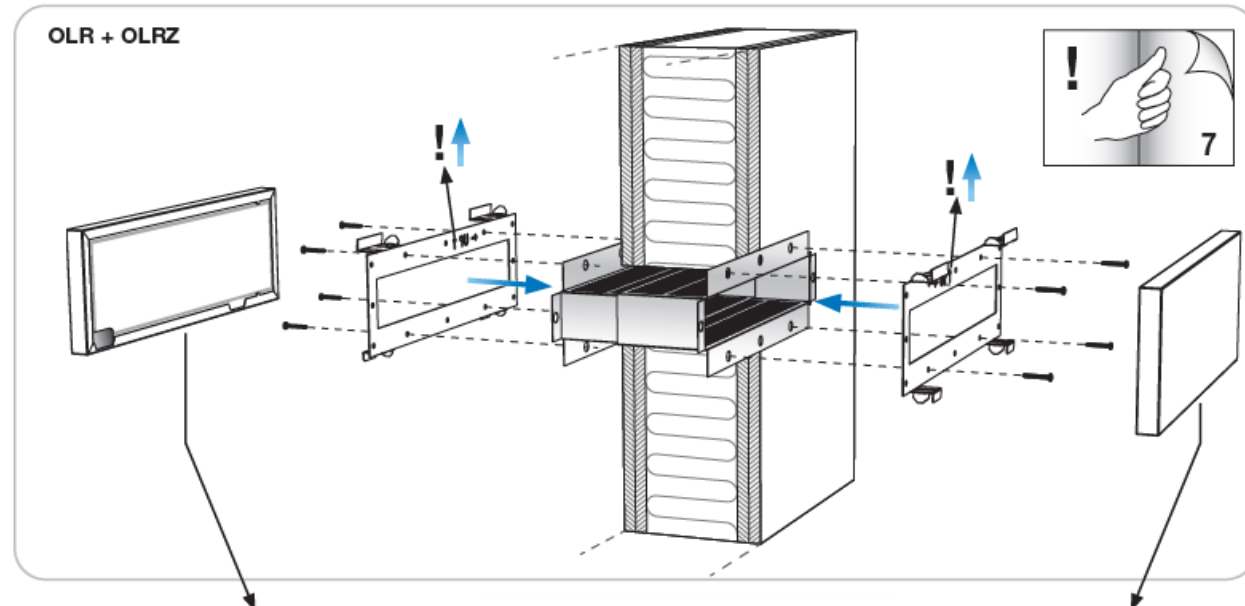
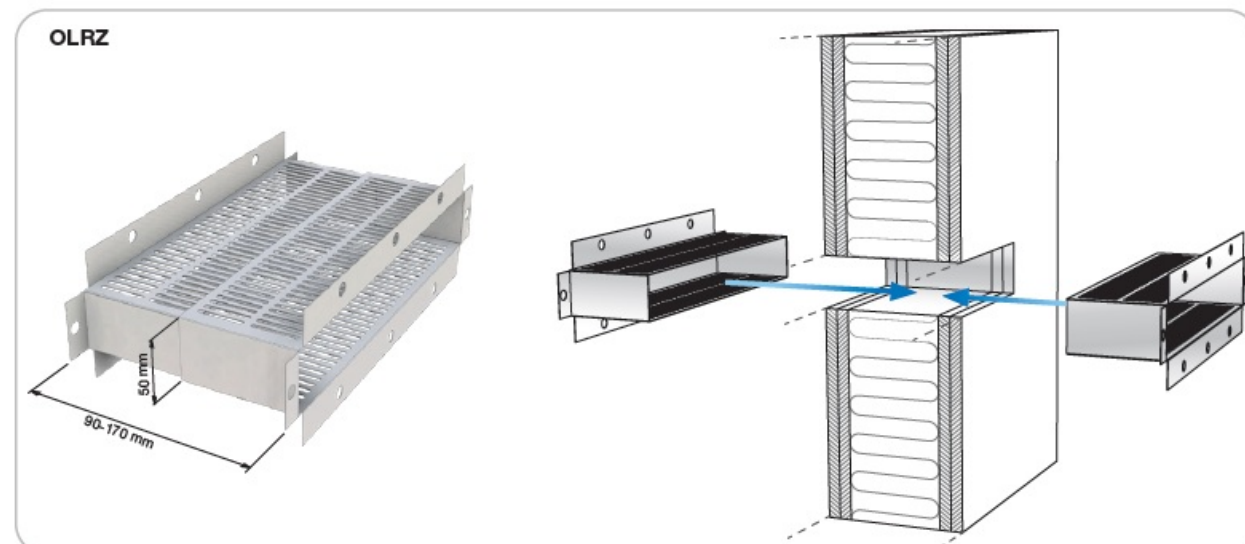
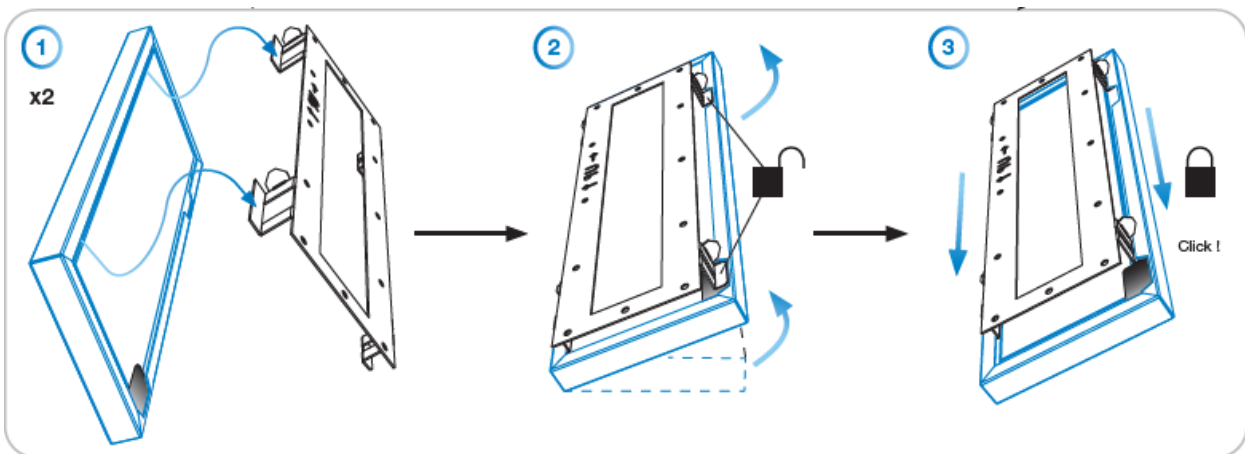


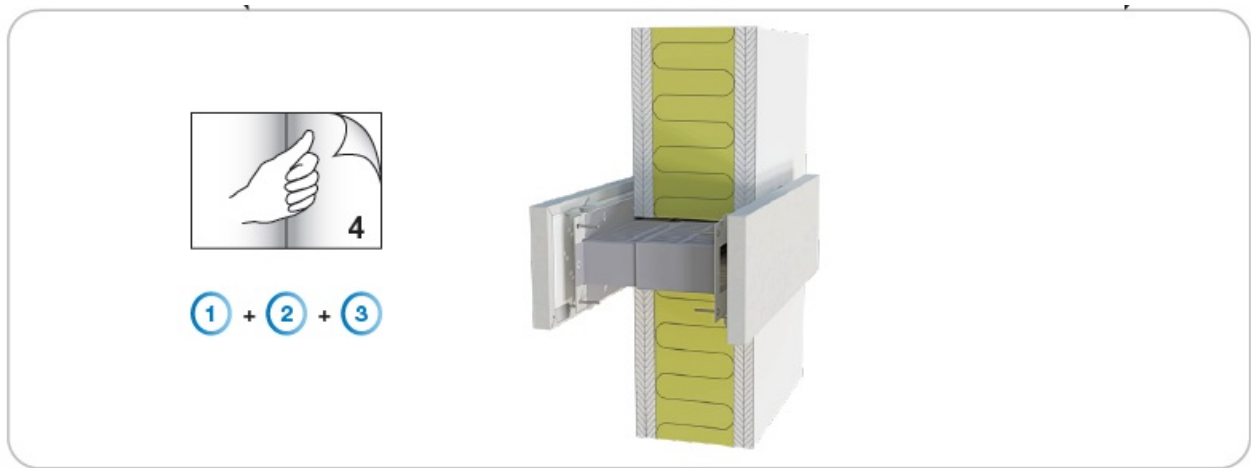
Vertical installation



(A) + (B) + (C)







Important

Number of screws depend on which variant of the product that is installed.

The type of wall is also important, select the right type of screws. Contact your local Lindab dealer for further information.

Maintenance

The sound attenuation baffles on both sides of the wall can be removed to enable cleaning of internal parts. The visible parts of the unit can be wiped with a damp cloth.

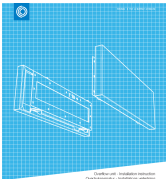
Lindab reserves the right to make changes without prior notice 2024-03-20



Most of us spend the majority of our time indoors. Indoor climate is crucial to how we feel, how productive we are and if we stay healthy.

We at Lindab have therefore made it our most important objective to contribute to an indoor climate that improves people's lives. We do this by developing energy-efficient ventilation solutions and durable building products. We also aim to contribute to a better climate for our planet by working in a way that is sustainable for both people and the environment.

Documents / Resources

 <p>The image shows a technical drawing of a Lindab OLR Overflow Unit. It is a rectangular unit with a blue grid background. The drawing includes a side view and a top view. The text 'Lindab OLR' is visible at the bottom left of the drawing.</p>	<p>Lindab OLR Overflow Unit [pdf] Installation Guide OLR OSiLzRe 300, 500, 700, 850, OLR Overflow Unit, OLR, Overflow Unit, Unit</p>
--	--

References

- [© Lindab | For a better climate - Lindab](#)
- [User Manual](#)

Manuals+, Privacy Policy

This website is an independent publication and is neither affiliated with nor endorsed by any of the trademark owners. The "Bluetooth®" word mark and logos are registered trademarks owned by Bluetooth SIG, Inc. The "Wi-Fi®" word mark and logos are registered trademarks owned by the Wi-Fi Alliance. Any use of these marks on this website does not imply any affiliation with or endorsement.