

LINDAB FRU FLOW MEASURING INSTRUMENT



# Lindab FRU Flow Measuring Instrument Instruction Manual

[Home](#) » [Lindab](#) » Lindab FRU Flow Measuring Instrument Instruction Manual 

## Contents

- [1 Lindab FRU Flow Measuring Instrument](#)
- [2 Product Information](#)
- [3 Product Usage Instructions](#)
- [4 Product](#)
- [5 Dimensions](#)
- [6 FRU in details](#)
- [7 Mounting of VRU](#)
- [8 Balancing](#)
- [9 Maintenance](#)
- [10 FAQ](#)
- [11 Documents / Resources](#)
  - [11.1 References](#)
- [12 Related Posts](#)



**Lindab FRU Flow Measuring Instrument**



## Product Information

### Specifications

- **Product:** Lindab FRU
- Equipped with Lindab Safe for connection to duct
- Prepared for insulation up to 50 mm
- Can be installed in any position without adjustment required
- Recommended for use in applications with clean air, free of dust and particles

### Product Usage Instructions

#### Mounting of FRU

FRU can be mounted using the following steps:

1. Connect FRU to Lindab Safe for duct connection
2. Ensure insulation up to 50 mm is in place
3. Install FRU in desired position without adjustment
4. Avoid clogging of measuring cross by using in clean air environments

#### Maintenance Instructions

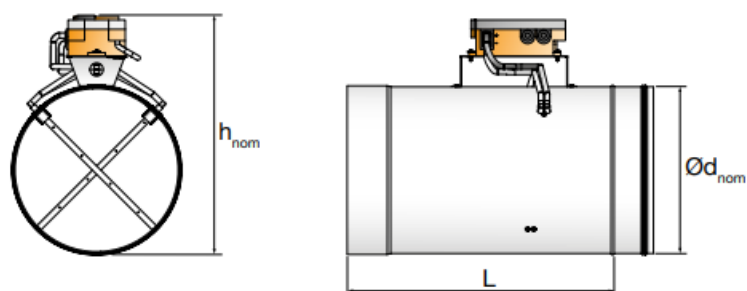
To maintain FRU, follow these steps:

1. Clean visible parts with a damp cloth
2. Remove pressure hoses and blow clean air into aluminum pipes
3. Avoid blowing into plastic hoses on the Belimo unit to prevent damage to sensors
4. Dismount hoses to clean measuring cross using clean air
5. Reassemble hoses and tighten black rings securely

## Product



## Dimensions



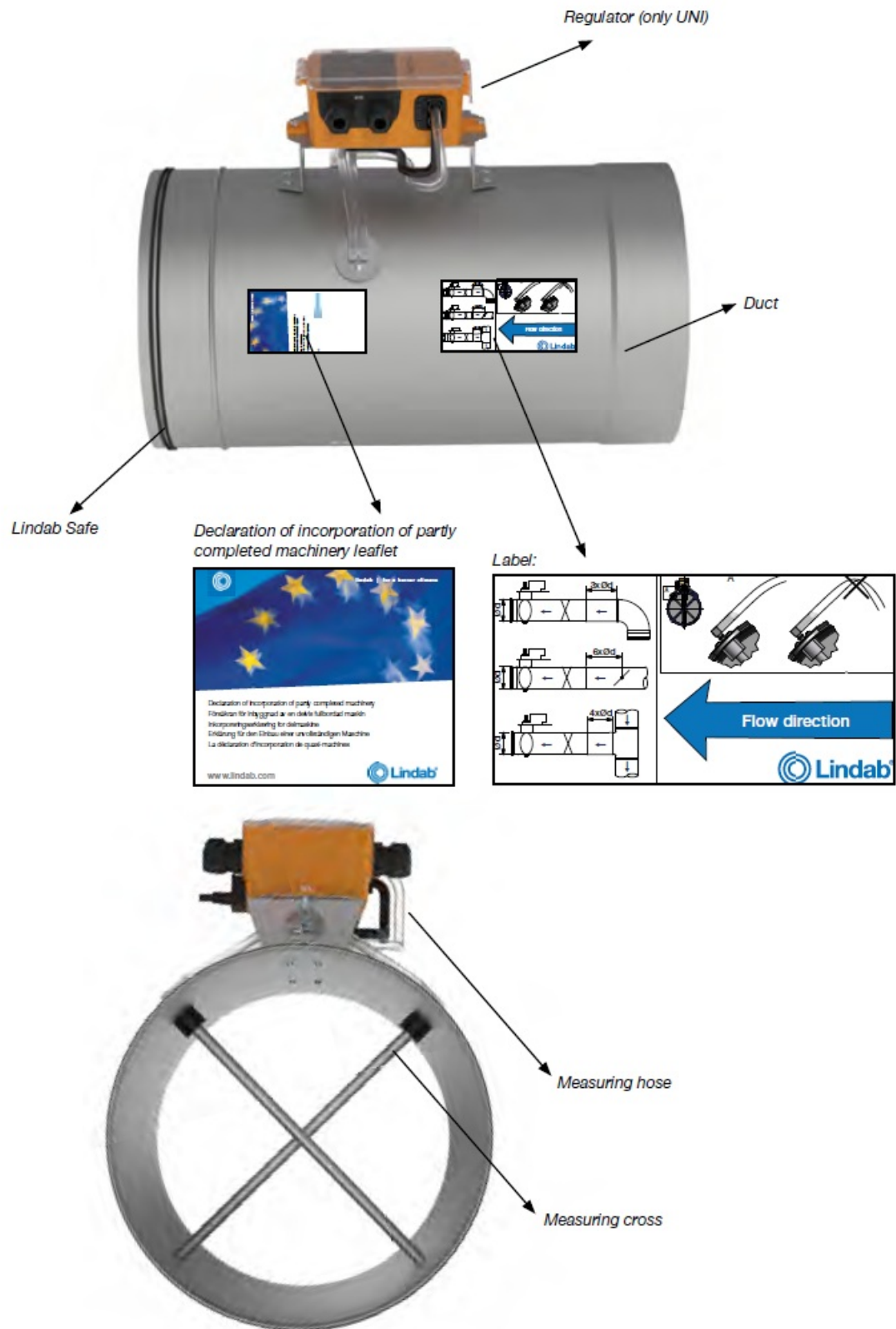
**Dimension table**

$\text{Ø}d_{nom}$	L	$h_{nom}$	Weight
100	300	205	1.6
125	300	230	1.8
160	300	265	2.1
200	300	305	2.4
250	400	355	3.7
315	400	420	4.5
400	400	507	6.6
500	510	607	9.3
630	560	737	12.4

**Regulator type table**

Type	Regulator
FRU-D	VRU-D3-BAC
FRU-M	VRU-M1-BAC

## FRU in details

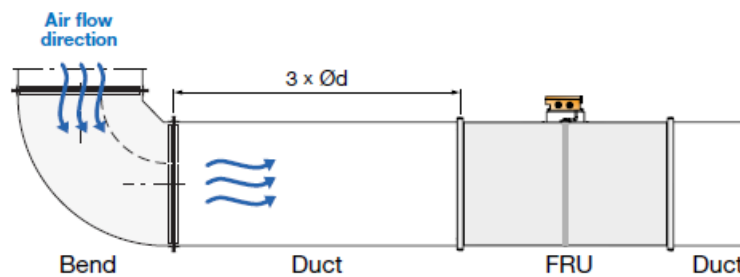


## Mounting of VRU

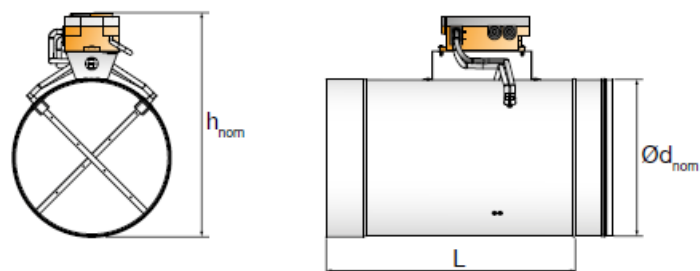


FRU is equipped with Lindab Safe for connection to the duct and is prepared for insulation up to 50 mm. FRU can be installed in any position without adjustment required. To avoid clogging of the measuring cross, it is recommended to use FRU only in applications with clean air, meaning free of dust, particles and similar.

### Example:



*Example above showing top view of recommended straight duct distance between duct bend and a FRU.*



*Front and top view of FRU and dimension  $\text{Ød}$ .*

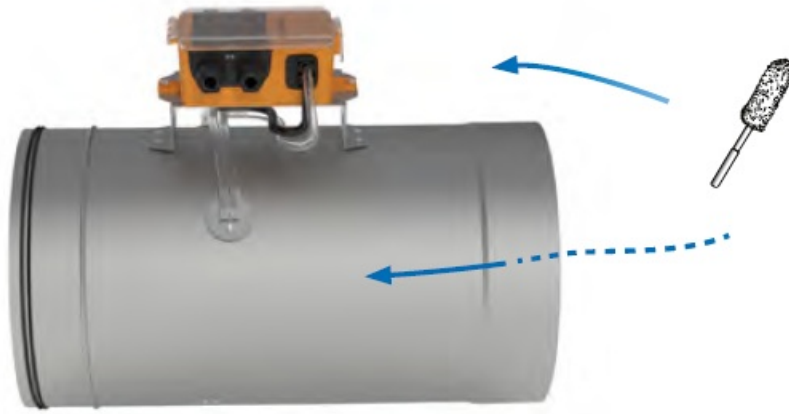
## Balancing

	<p><b>Universal controllers</b> UNI(-M) / SPR(-M) / FAS(-M)</p>
<p><b>Belimo Service Tool</b> ZTH-EU</p>	
<p><b>Belimo PC-Tool</b> MFT-P via ZTH-EU</p>	
<p><b>Belimo Assistant App</b> with NFC</p>	
<p><b>Belimo Assistant App</b> with Bluetooth via ZIP-BT-NFC</p>	
<p><b>Note *)</b></p>	<p>Modbus/Bacnet/KNX settings can be done with ZTH-EU, PC-Tool, or Belimo Assistant App.</p>
<p><b>Note **)</b></p>	<p>Belimo Assistant App works with all Universal controllers.</p>

## Maintenance

### Cleaning of measuring cross

The visible parts of the product can be wiped with a damp cloth. Remove pressure hoses and blow clean air into the aluminum pipes. Do not blow into the plastic hoses mounted on the Belimo unit, as this can damage the flow/membrane sensors.



- **Cleaning the measuring cross**

Please demount the hoses and use clean air to clean the hoses and measuring cross.

- **Mounting hoses**

Put the hoses back followed by squeezing the black tightness rings back.

- **Mounting hoses step 1**

Put the hoses back

- **Mounting hoses step 2**

Squeeze the black tightness rings back.

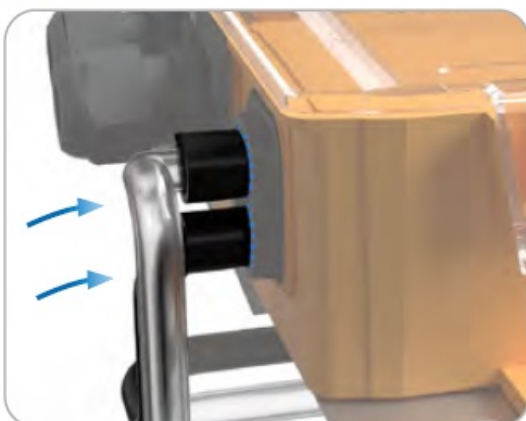
**Cleaning the measuring cross**  
Please demount the hoses and use clean air to clean the hoses and measuring cross.



**Mounting hoses**  
Put the hoses back followed by squeezing the black tightness rings back.



**Mounting hoses step 1**  
Put the hoses back



**Mounting hoses step 2**  
Squeeze the black tightness rings back.





Most of us spend the majority of our time indoors. Indoor climate is crucial to how we feel, how productive we are and if we stay healthy. We at Lindab have therefore made it our most important objective to contribute to an indoor climate that improves people's lives. We do this by developing energy-efficient ventilation solutions and durable building products. We also aim to contribute to a better climate for our planet by working in a way that is sustainable for both people and the environment.



[www.lindab.com](http://www.lindab.com)

## FAQ

**Q: Can FRU be installed in any position?**

A: Yes, FRU can be installed in any position without the need for adjustment.

**Q: How should I clean the measuring cross of FRU?**

A: To clean the measuring cross, dismount the hoses and use clean air to blow through them.

**Q: What tools can be used for Modbus/Bacnet/KNX settings?**

A: Modbus/Bacnet/KNX settings can be done with ZTH-EU, PC-Tool, or Belimo Assistant App.

## Documents / Resources

	<p><a href="#">Lindab FRU Flow Measuring Instrument</a> [pdf] Instruction Manual FRU-D, FRU-M, FRU Flow Measuring Instrument, FRU, FRU Instrument, Flow Measuring Instrument, Flow Measuring, Measuring Instrument, Measuring</p>
--	---

## References

-  [Lindab | For a better climate - Lindab](#)
- [User Manual](#)



## **Manuals+. Privacy Policy**

This website is an independent publication and is neither affiliated with nor endorsed by any of the trademark owners. The "Bluetooth®" word mark and logos are registered trademarks owned by Bluetooth SIG, Inc. The "Wi-Fi®" word mark and logos are registered trademarks owned by the Wi-Fi Alliance. Any use of these marks on this website does not imply any affiliation with or endorsement.