



LIMINK WF08 WiFi Endoscope Camera User Manual

[Home](#) » [LIMINK](#) » LIMINK WF08 WiFi Endoscope Camera User Manual 



WiFi ENDOSCOPE CAMERA™ USER MANUAL

Contents

- [1 Important Safety Instructions](#)
- [2 Applications](#)
- [3 Technical Parameters](#)
- [4 Detailed Operation Steps:](#)
- [5 HOW TO USE "HD WiFi" APP](#)
- [6 Product Structure](#)
- [Introduction](#)
- [7 Documents / Resources](#)
- [8 Related Posts](#)

Important Safety Instructions

WARNING! Please read all instructions carefully before using this product. It can result in electric shock, fire or personal injury if not done properly.

What You Need to Know

Prevent entry of liquid and objects. Liquid increases the risk of electrical and damages to the product.

The unit is not shock-resistant. Don't use the WiFi endoscope as a hammer and avoid high impact resultant caused by falling device from high places.

The Lens and tube are water-proof when the unit is fully assembled, but the WiFi box is not. Do not immerse the WiFi box in water.

Do not use the camera if condensations forms inside the lens. Let the water evaporate before reuse.

Turn off the WiFi Endoscope and place it in a dry environment when it is not in use.

Attention should be given to the environmental aspects of battery disposal.

It's normal for the camera to become hot especially when the LED is the brightest, it will not affect the use or life-span of the endoscope.

The WiFi transmission distance is about 10m without any obstacles.

Please keep the distance between WiFi box and mobile phone within this range.

Keep away from other powerful WiFi signals when using this product.

Otherwise, it may affect the WiFi connection between the WiFi box and the smartphone.

Please note that the camera probe is only IP67 waterproof which means it can be underwater inspections for no deep than 1 meter and no more than a few minutes, otherwise the camera lens may be damaged. endoscope.

Applications

This product is equipment with real-time video viewing, video recording and picture capturing, etc... which is suitable for narrow area and the area where your eyes hard to see or hands hard to reach, such as vehicle repairs, sewer inspection/maintenance, ventilation inspection, behind the wall inspection, etc.

Technical Parmeters

| | | |
|---------------|----------------------------|----------------------------------|
| Camera | Model | WF08 |
| | Image Sensor | CMOS |
| | Camera Resolution | 1920×1080, 1280×720, 640×480 |
| | Horizontal view angle | 45° |
| | Camera Focus Distance | 3cm-10cm(Fix focus, no zoom) |
| | Diameter | 8.5mm |
| | Working Voltage | DC 5V11A |
| | Battery Capacity | 2200mAh |
| | WiFi Transmission Distance | 10 meters(without any obstacles) |
| | Waterproof Grade | IP67(only for lens/tube) |
| | Zoom in and out | 3 modes of enlarged and narrow |



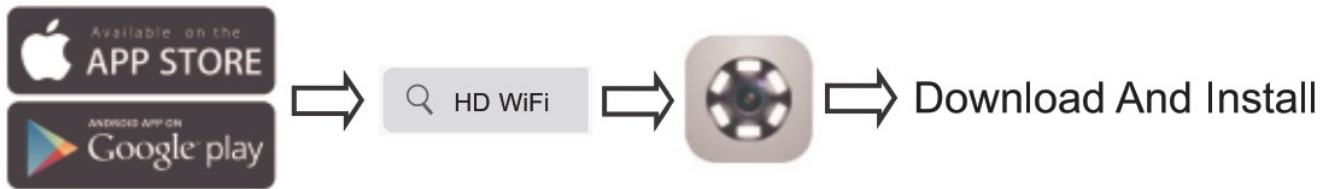
Note

Support Android smartphone or tablet (Above Android 2.3) and IOS devices (Above IOS 6.0), but IOS 8.0 lower system can't record videos.

When charging, the LED turns green, the green light is off after fully charged. Moreover, please IOS 8.0 use household adapter/wall charger to charge the WiFi endoscope.

Detailed Operation Steps:

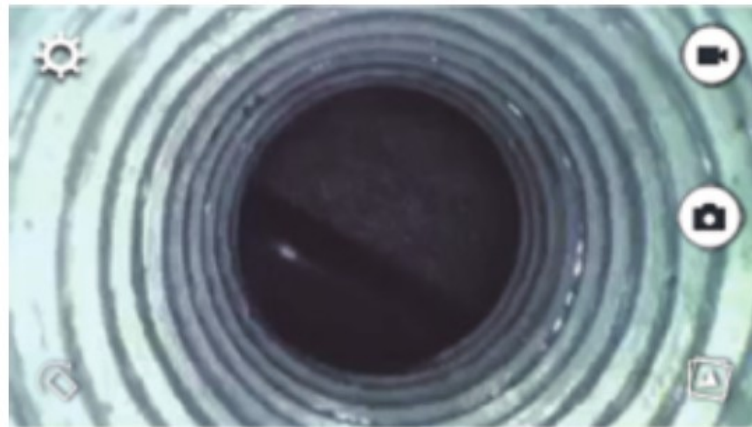
1. Search the free APP "HD WiFi" in Apple Store or Google Play Store.



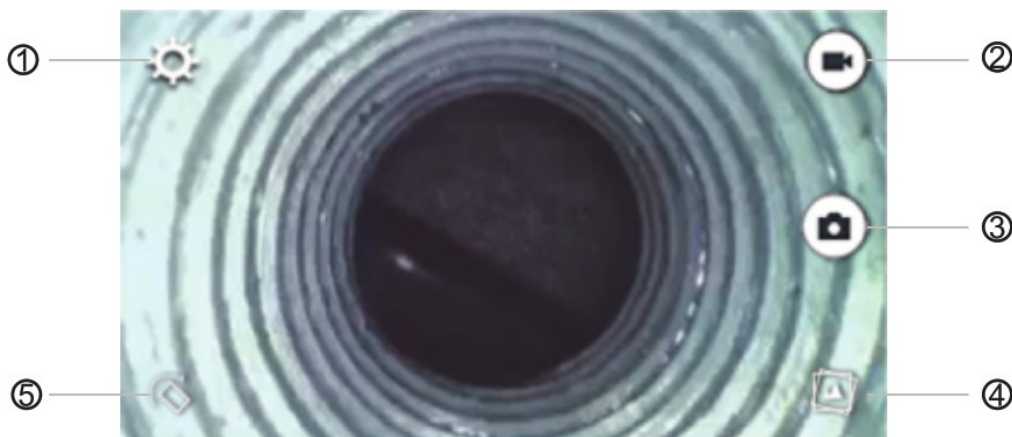
2. Turn on the endoscope WiFi box power switch, waiting for the blue indicator lights up.
3. Connect endoscope to smartphone
 1. Turn on your smartphone, click the “Setting” icon on the main menu of smartphone.
 2. Disconnect your phone wifi, connect the hotspot named “Jetion_*****” to your device with the password “12345678”, and then click “join” to finish.
 3. Please ensure that the endoscope is fully charged before use, otherwise it may affect the wifi connection.








4. After joining the endoscope WiFi, please click the free app “HD WiFi” on the smart device and then you can view what you want to inspect.




HOW TO USE “HD WiFi” APP

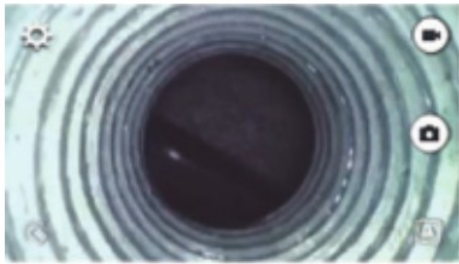


1.  Setting: set SSID name, WiFi password, Resolution
2.  Picture Capture: snapshot in-time picture
3.  Recording video by press this button

4.  Browsing the captured pictures and videos video
5.  Rotating in-time picture/video

Modify SSID name and Password

1. Click “Setting” icon  in “HD WiFi” App,
2. Select “Set WiFi SSID” Set WIFI SSID or “Set Password” Set WiFi Password and input what you want to modify, then complete the setup.



| | |
|---|--|
| <input type="text" value="Please enter WiFi SSID"/> | <input type="button" value="Set WiFi SSID"/> |
| <input type="text" value="Please enter Password"/> | <input type="button" value="Set WiFi Password"/> |
| 1920 X 1080 ✓ | <input type="button" value="Set Resolution"/> |
| 640 X 480 | |
| 1280 X 720 | |
| 1920 X 1080 | <input type="button" value="Clear Password"/> |

Note1: If not necessary, we do not advise our customer to change the original WiFi SSID and Password for more stable using experience.

Note2: The new password must be within 8 characters either numbers or letters without any special marks like asterisk “*” or dash “_”.

Note3: In case you have forgotten the modified WiFi SSID or password, you can press and hold the RESET button on the left side of the handle for more than five seconds. The blue light flashes continuously to indicate that the reset is successful.

Note4: The device must be restarted after modification or reset.






Modify Camera Resolution

1. Click “Setting” icon on the main interface and choose resolution.
2. Click “Modify Resolution’ to finish the modification.





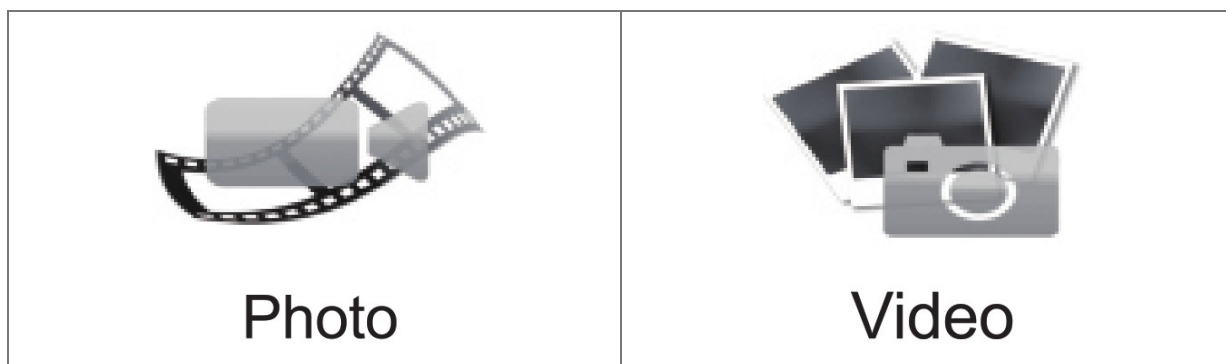
| |
|---------------|
| 1920 X 1080 ✓ |
| 640 X 480 |
| 1280 X 720 |
| 1920 X 1080 |

Capture Photo,Record Video,Browse Photo And Video

1. Click icon  or press button  for photo capturing
2. Click icon  or press button  1o start video recording till the time that you want to stop recording by clicking icon  again.

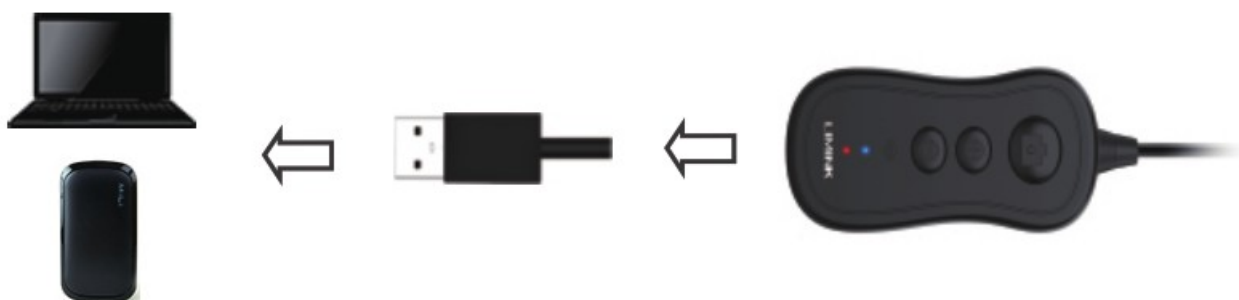
3. Click icon  to browser captured photos or recorded videos.

Note: Press button   to enlarged and narrow picture or video on line. The photos and videos will be saved in your photo app when you enable the app accessible to the “photo” in your photo setting.



How To Charge The WiFi Endoscope

Via PC or Power bank(DC 5V 1A), using the attached micro usb charging cable connect to usb interface.



Product Structure Introduction



How To Install Accessories

Included 3 accessories(mirror, hook and magnet) are all attached to the camera in the same way, as illustrated below



Hook



Magnet



Mirror

FCC Statement

This equipment has been tested and found to comply with the limits for a Class B digital device, pursuant to part 15 of the FCC Rules. These limits are designed to provide reasonable protection against harmful interference in a residential installation. This equipment generates, uses and can radiate radio frequency energy and, if not installed and used in accordance with the instructions, may cause harmful interference to radio communications. However, there is no guarantee that interference will not occur in a particular installation. If this equipment does cause harmful interference to radio or television reception, which can be determined by turning the equipment off and on, the user is encouraged to try to correct the interference by one or more of the following measures:

- Reorient or relocate the receiving antenna.
- Increase the separation between the equipment and receiver.
- Connect the equipment into an outlet on a circuit different from that to which the receiver is connected.
- Consult the dealer or an experienced radio/TV technician for help.

Caution: Any changes or modifications to this device not explicitly approved by manufacturer could void your authority to operate this equipment. This device complies with part 15 of the FCC Rules. Operation is subject to the following two conditions:

1. This device may not cause harmful interference, and
2. this device must accept any interference received, including interference that may cause undesired operation.

RF Exposure Information

The device has been evaluated to meet general RF exposure requirement. The device can be used in portable exposure condition without restriction.

CE FC RoHS

MAME IN CHINA

Documents / Resources



[LIMINK WF08 WiFi Endoscope Camera](#) [pdf] User Manual
FW-15M-XZ, FW15MXZ, 2A5IH-FW-15M-XZ, 2A5IHF15MXZ, WF08 WiFi Endoscope Camera, WF08, 45583, WiFi Endoscope Camera