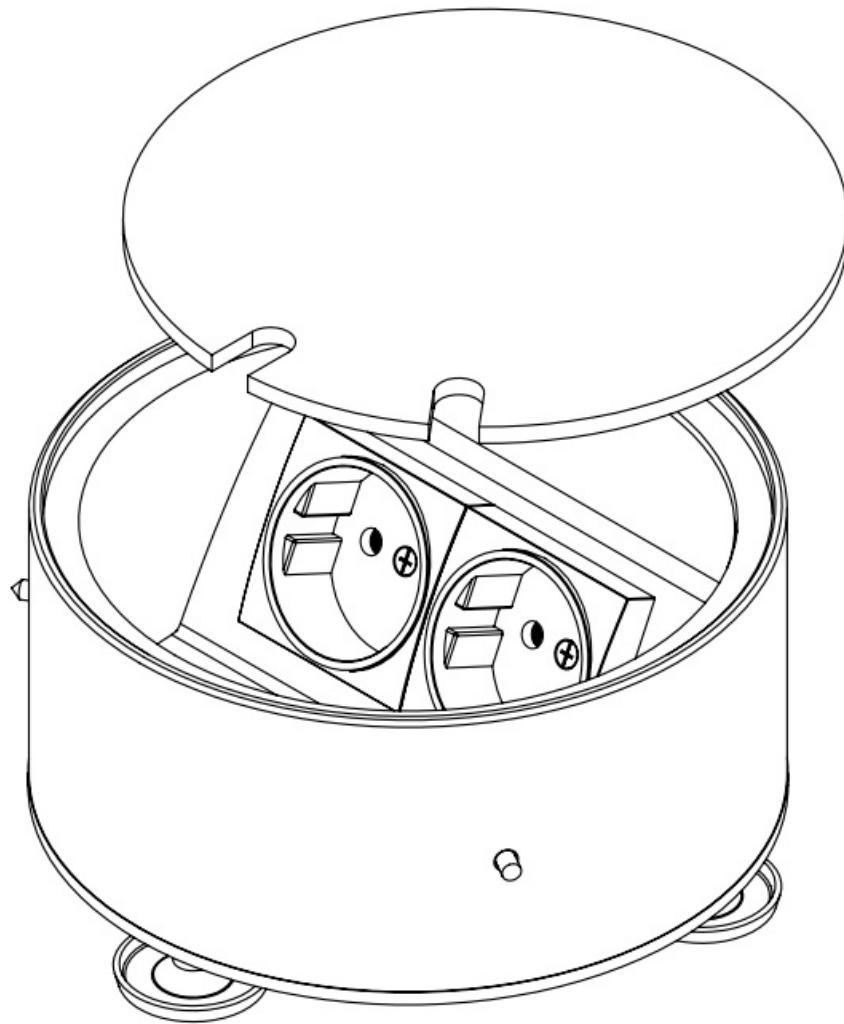


LIMENTE 992004 Floor Socket Instruction Manual

[Home](#) » [LIMENTE](#) » LIMENTE 992004 Floor Socket Instruction Manual 

LIMENTE 992004 Floor Socket



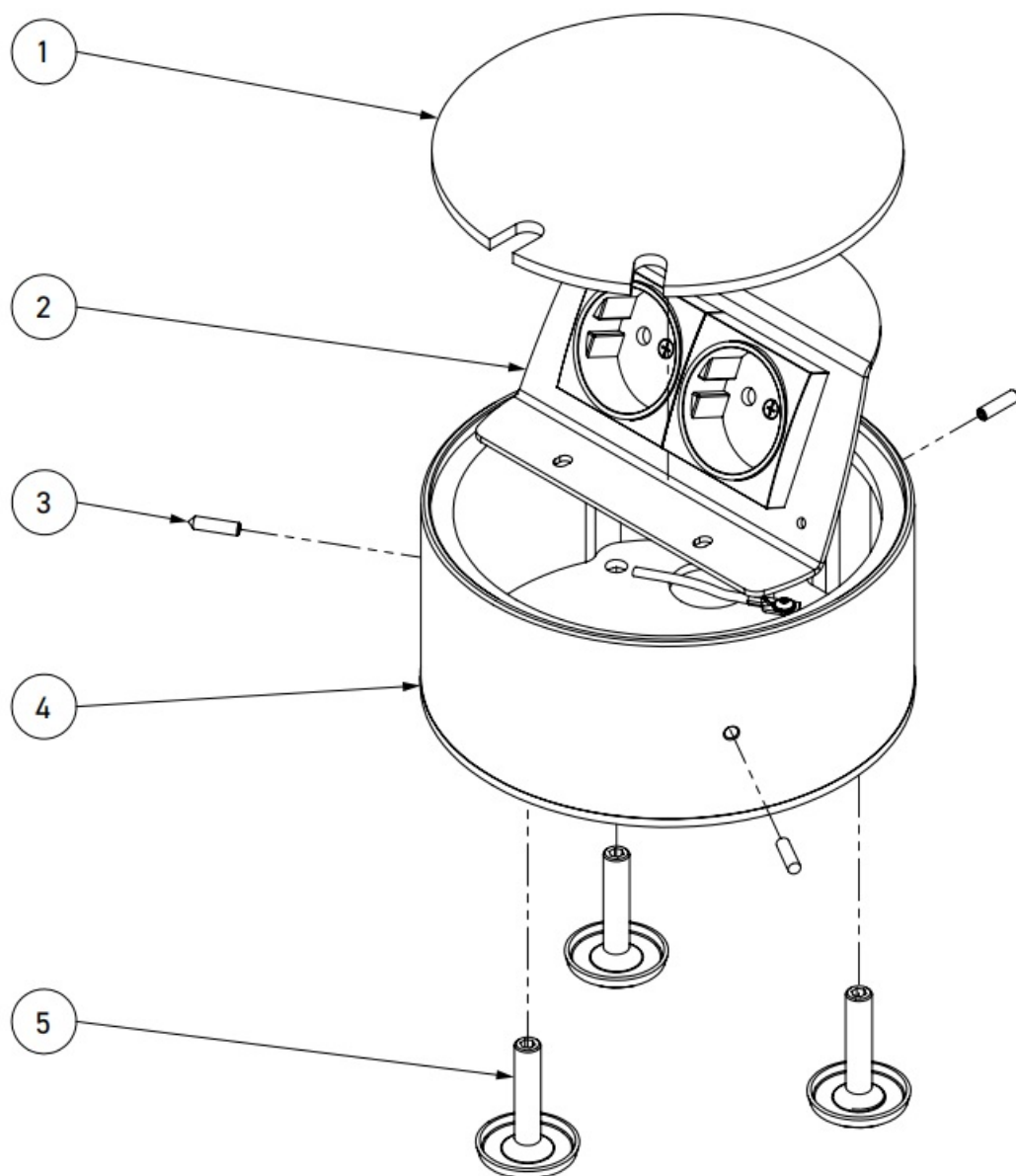
Contents

- [1 Product Description](#)
- [2 Instruction](#)
- [3 Instructions for use](#)
- [4 Documents / Resources](#)
 - [4.1 References](#)
- [5 Related Posts](#)

Product Description

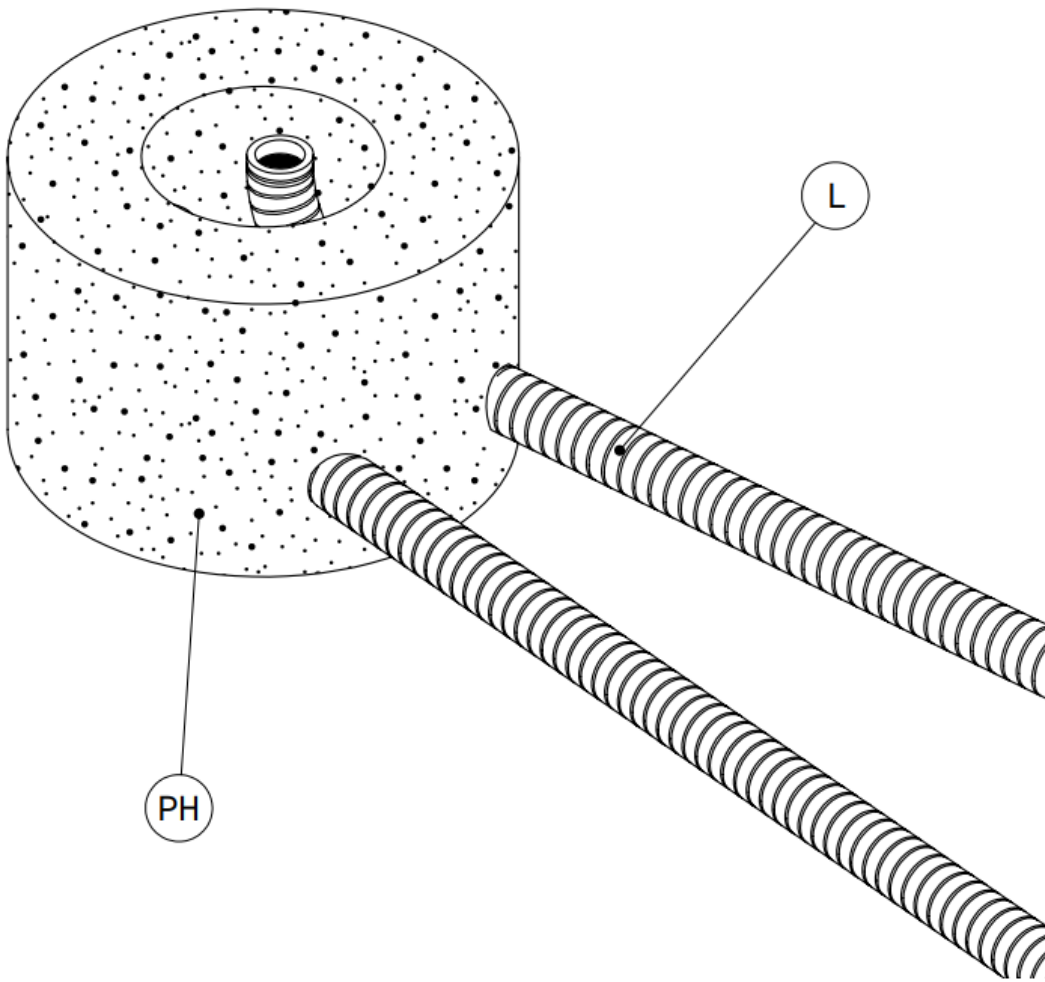
992004-992007

1. lid
2. device carrier
3. grub screws
4. housing
5. leveling feet

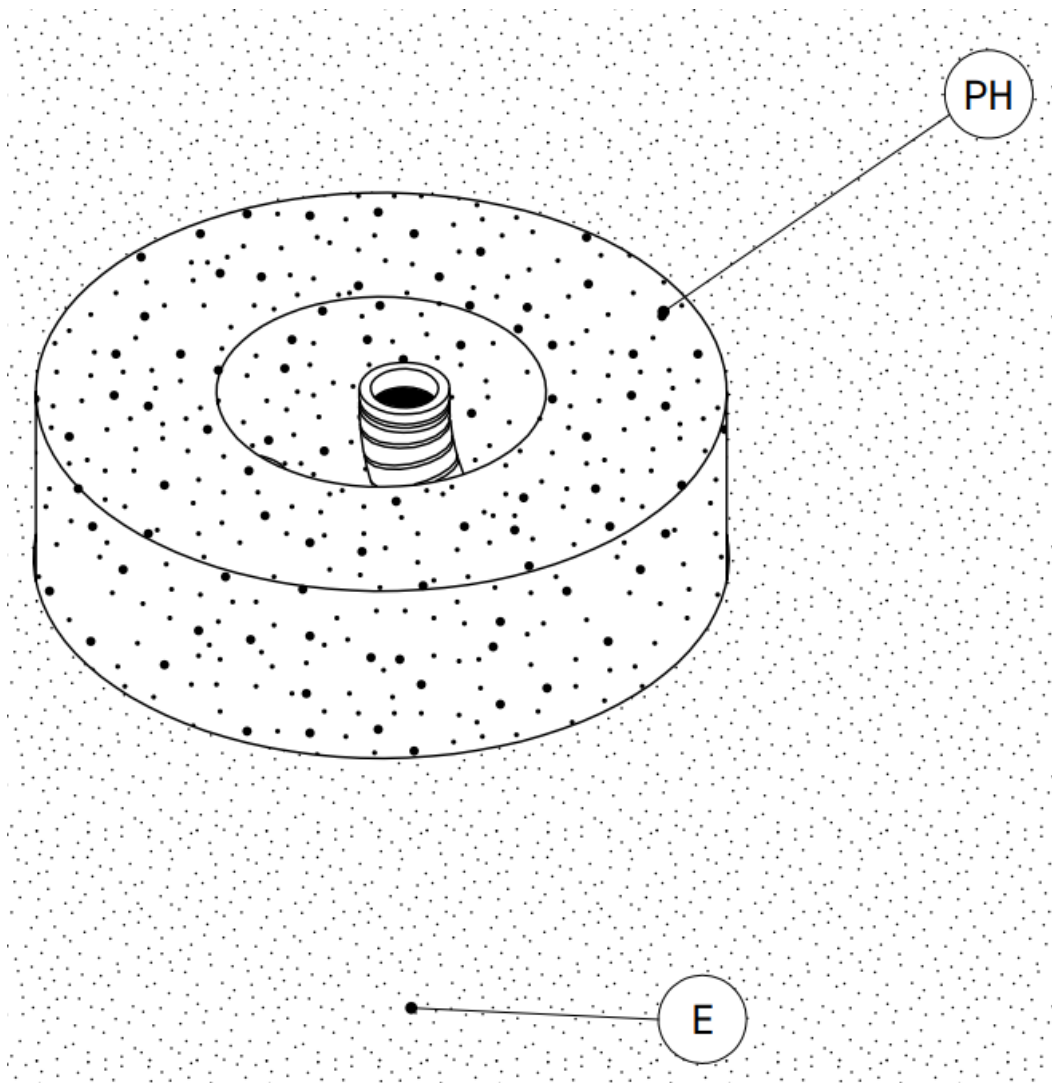


Instruction

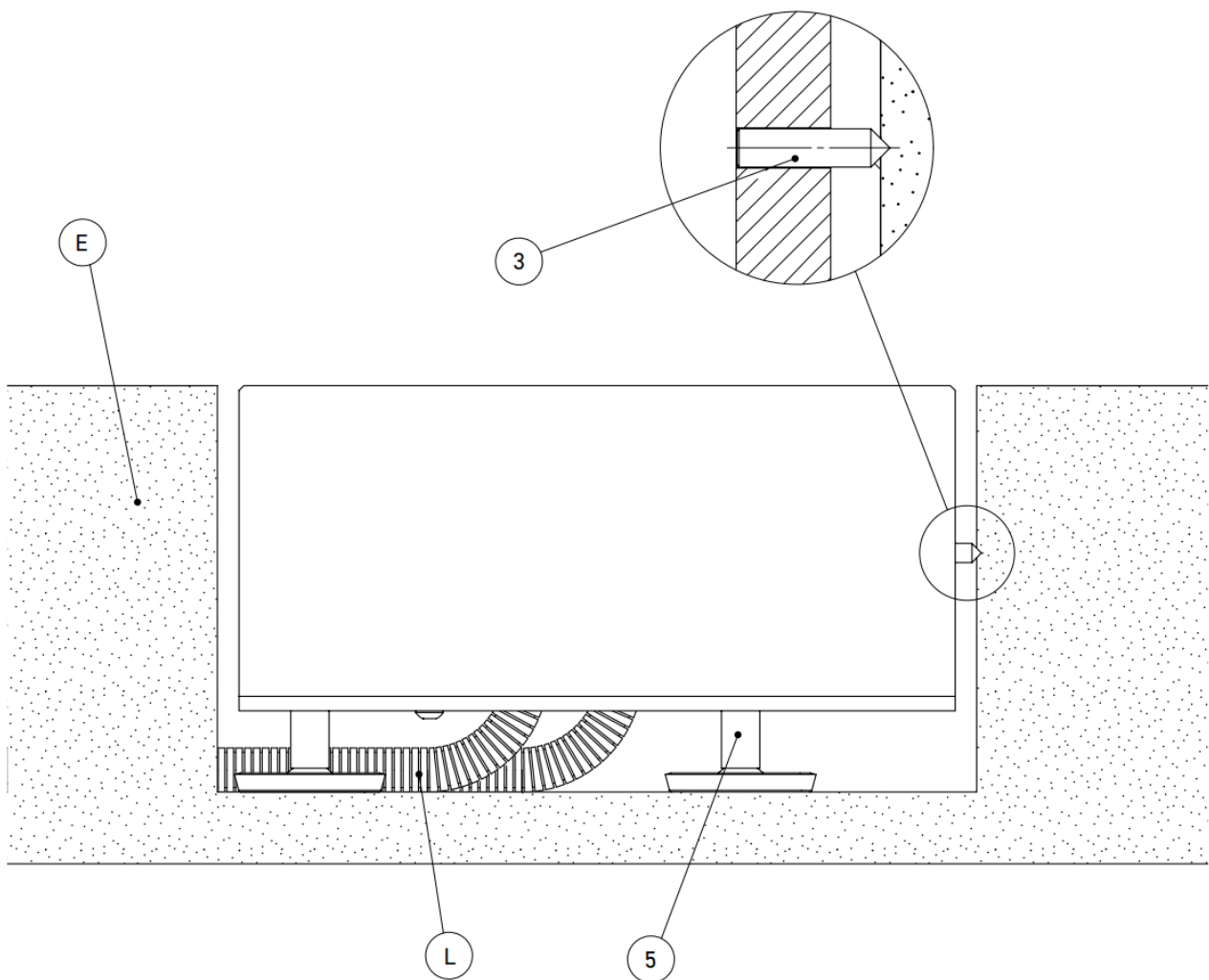
1. Remove the lid(1) and unscrew the device carrier from the housing(4). Lay the cables/ conduits (L) to the installation position of the floor socket and insert them into a placeholder (PH) made of EPS or plastic.



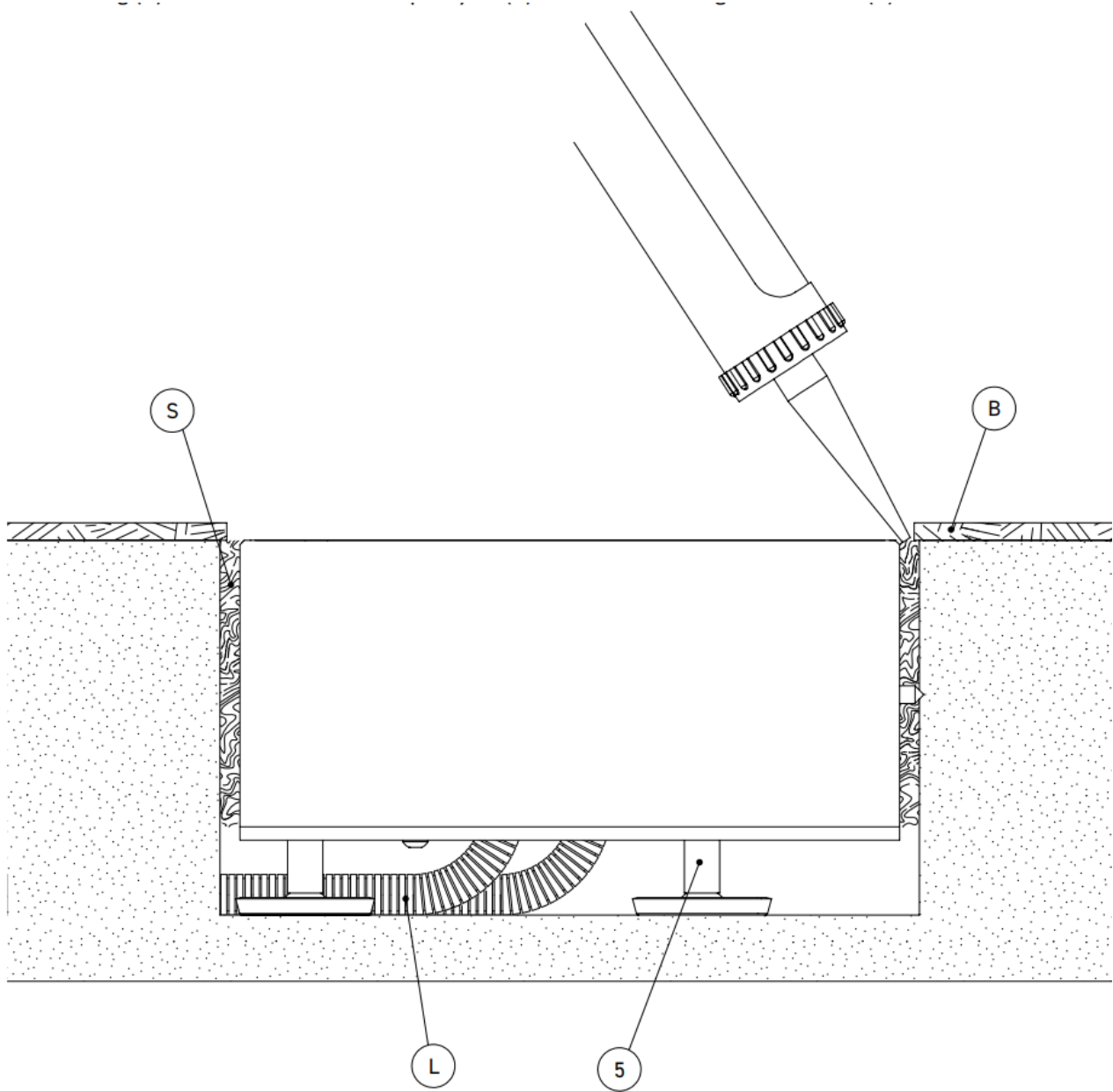
2. Now pour the placeholder (PH) with screed (E). The later construction height must be taken into account. Let the screed (E) harden.



3. After the screed (E) has hardened, remove the placeholder (PH) from the screed, insert the conduits/cables (L) either on the side, or from below into the housing (4) and place the housing (4) in the cutout. Level the housing (4) flush with the floor and anchor it in the screed (E) using the grub screws (3).



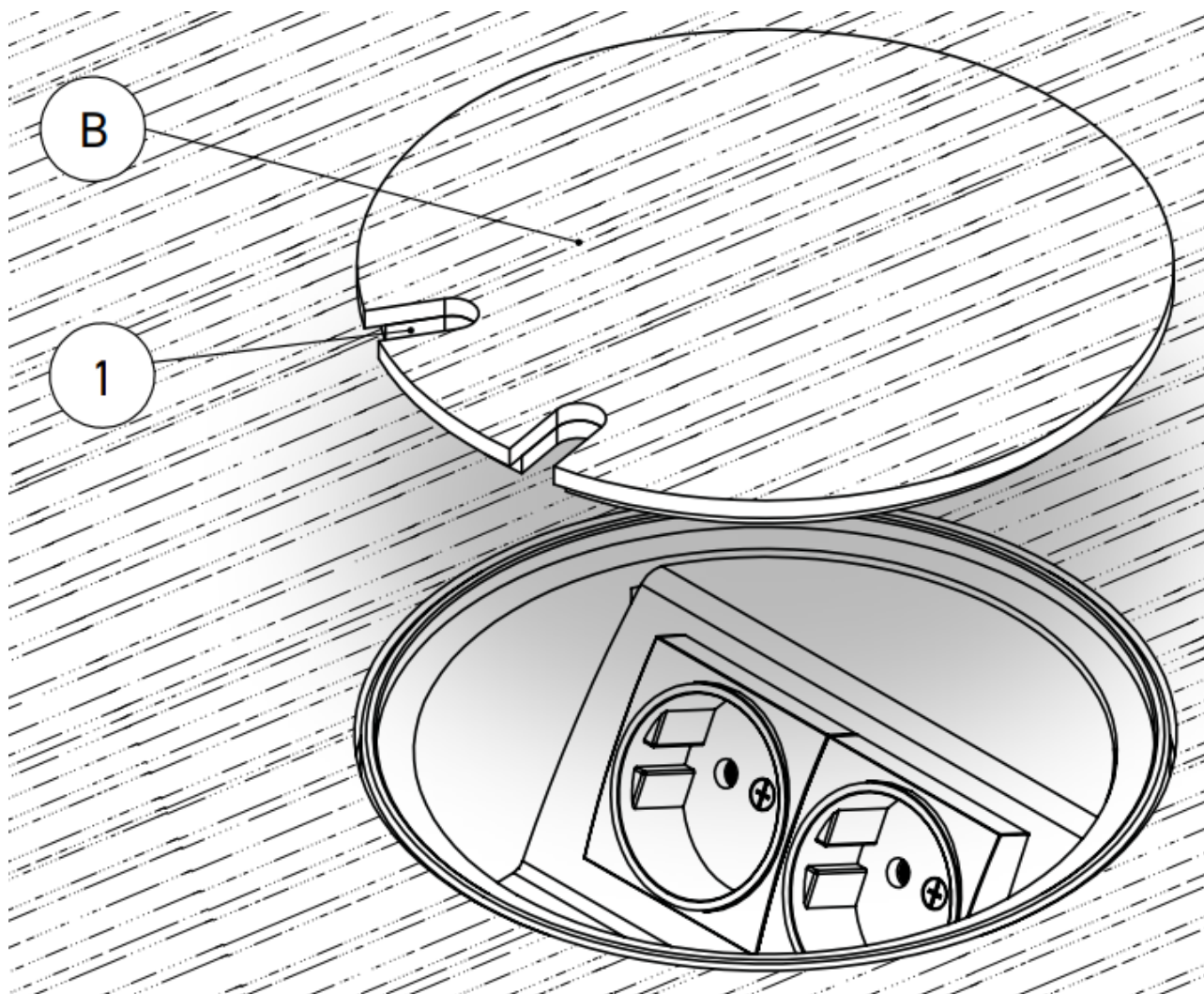
4. Seal the housing (4) laterally with silicone (S). Then lay the floor covering (B) in the room.



5. Finally cut the floor covering to a suitable size with a diameter of 110 mm and glue it onto the lid (1) with a construction adhesive (eg „beko ALLCON 10“).

(Attention: Note the cable outlets!)

The floor socket is now successfully installed.

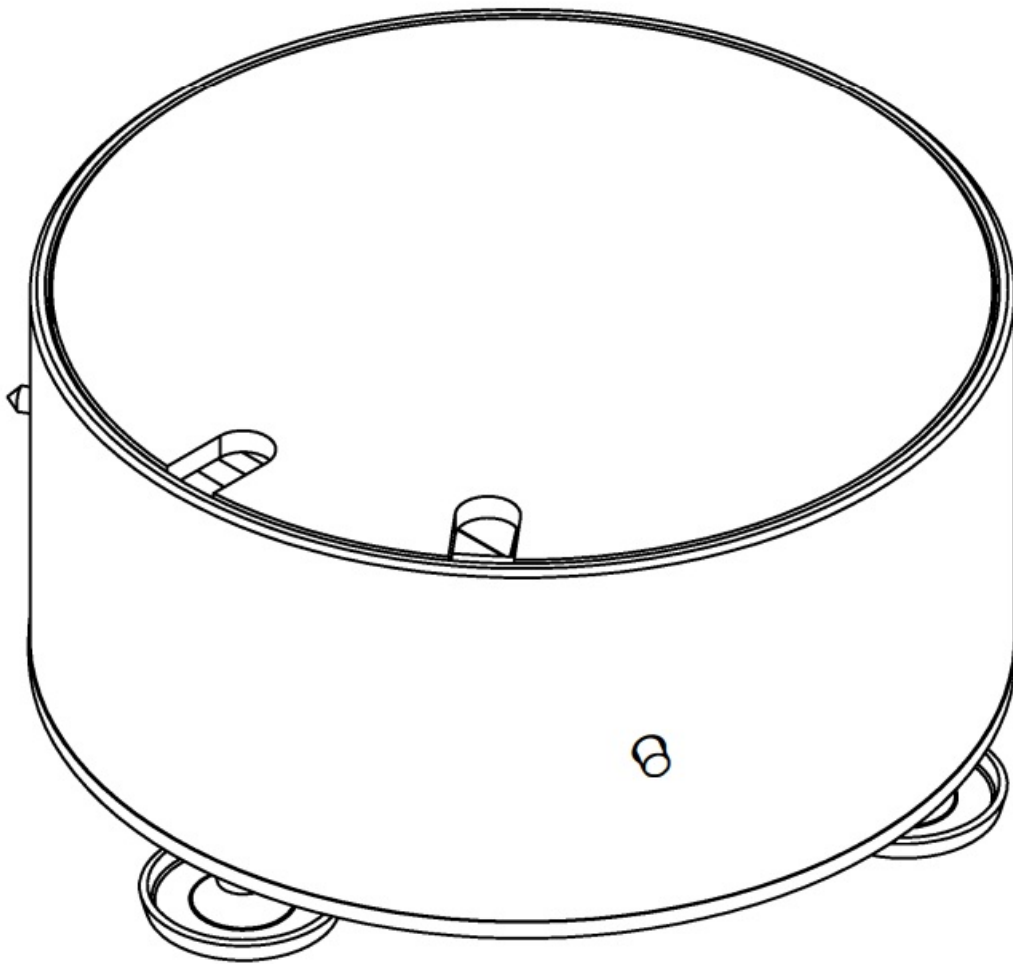


Instructions for use

Connection, repair or maintenance must be carried out by a trained specialist.

- During installation and commissioning gloves must be worn.
- For the installation of the floor socket, a solid surface (for example screed, concrete) must be present.
- When installing on an unpaved surface, the floor socket is not walkable.
- The connecting cable must have a crosssection in accordance with the VDE regulation.
- The cable glands used should be suitable for the corresponding cable cross-section.
- When using the leveling screws, the floor socket can only be walked on.
- The covering glued to the lid must be at a height that enables unrestricted use of the product.
- A layer that is "too high" makes it difficult to open the lid by hand.
- Care instructions: The product is suitable for dry care (liquid-free or low-liquid (mist-moist) cleaning methods are used). In addition, no acid-, chloride- containing or alkaline products may be used for cleaning.

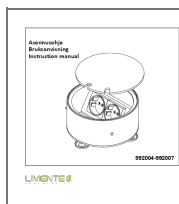
Errors and technical changes reserved.



Subject to errors and technical changes.



Documents / Resources



[LIMENTE 992004 Floor Socket](#) [pdf] Instruction Manual
992004 Floor Socket, 992004, Floor Socket, Socket

References

- [User Manual](#)

Manuals+. Privacy Policy

This website is an independent publication and is neither affiliated with nor endorsed by any of the trademark owners. The "Bluetooth®" word mark and logos are registered trademarks owned by Bluetooth SIG, Inc. The "Wi-Fi®" word mark and logos are registered trademarks owned by the Wi-Fi Alliance. Any use of these marks on this website does not imply any affiliation with or endorsement.