



Limcet Link Wireless Carplay Android Retrofit Kit User Manual

[Home](#) » [Limcet](#) » Limcet Link Wireless Carplay Android Retrofit Kit User Manual



Contents [[hide](#)]

- [1 Introduction](#)
- [2 Box parameters and warranty](#)
- [3 Packing List](#)
- [4 Warranty Terms](#)
- [5 Interface introduction](#)
- [6 System settings](#)
- [7 Open Carplay to view the operating instructions](#)
- [8 About network usage](#)
- [9 About driving safety](#)
- [10 Postscript](#)
- [11 FCC Caution](#)
- [12 Documents / Resources](#)
- [13 Related Posts](#)

Introduction

Thank you for choosing to use this Limcet BOX.

CarPlay

The iPhone's built-in car-machine interaction system works with the central control knob button to operate the voice control phone, information, navigation, music and Siri voice interaction for more information; supports wireless and wired connections to CarPlay

CarLife

The car and machine care system developed by Baidu supports the connection of iPhone and Android devices, voice control of telephone, information, navigation, and music; built-in "Xiaodu" voice control system, supports wireless and wired connections

AndroidAuto

The original ecological Android car-machine interaction system developed by Google, voice control phone, information, navigation, music built-in voice control system;

Front/Rear/360

The intelligent module can decode video and can be equipped with front view, rear view (support display intelligent dynamic trajectory and radar), right view and 360 panoramic view

Mirroring

Supports wired and wireless screen projection for iPhone and Android phones

AHD HD video protocol

Added AHD HD rearview/360 video output interface

USB video

Automatic media playback function can directly insert U disk to play audio and video media

DSP Power amplifier chip

Add DSP power amplifier chip to improve sound quality

Box parameters and warranty

Running Voltage: 9-16V, 14.4V rated ;
Operating temperature -30~+75°C;
Power consumption current 1A rated 3A Max ;
Quiescent current less than 3mA;
Storage temperature -30~+85°C
Shutdown current 300mA Clock is on

Charging current $\leq 1.5A$. when the USB charging current is $> 3A$, the host computer of the radio and receiver should start the circuit protection function to control the current below 1.5A to avoid burning the product.

Packing List

The diagram illustrates the LIMCET BOX system, a central unit for video and audio processing. The components and their connections are as follows:

- Power Supply:** A power supply unit is connected to the LIMCET BOX via a power cable.
- Microphone:** A microphone is connected to the LIMCET BOX via a cable.
- Camera:** A camera is connected to the LIMCET BOX via a cable.
- Display:** A display is connected to the LIMCET BOX via a cable.
- Output Ports:** The LIMCET BOX has multiple output ports for video, audio, and data.
- Labels:** The diagram includes labels for various components and their functions, such as "LIMCET BOX", "Power Supply", "Microphone", "Camera", "Display", "Video Output", "Audio Output", and "Data Output".

Dear user:

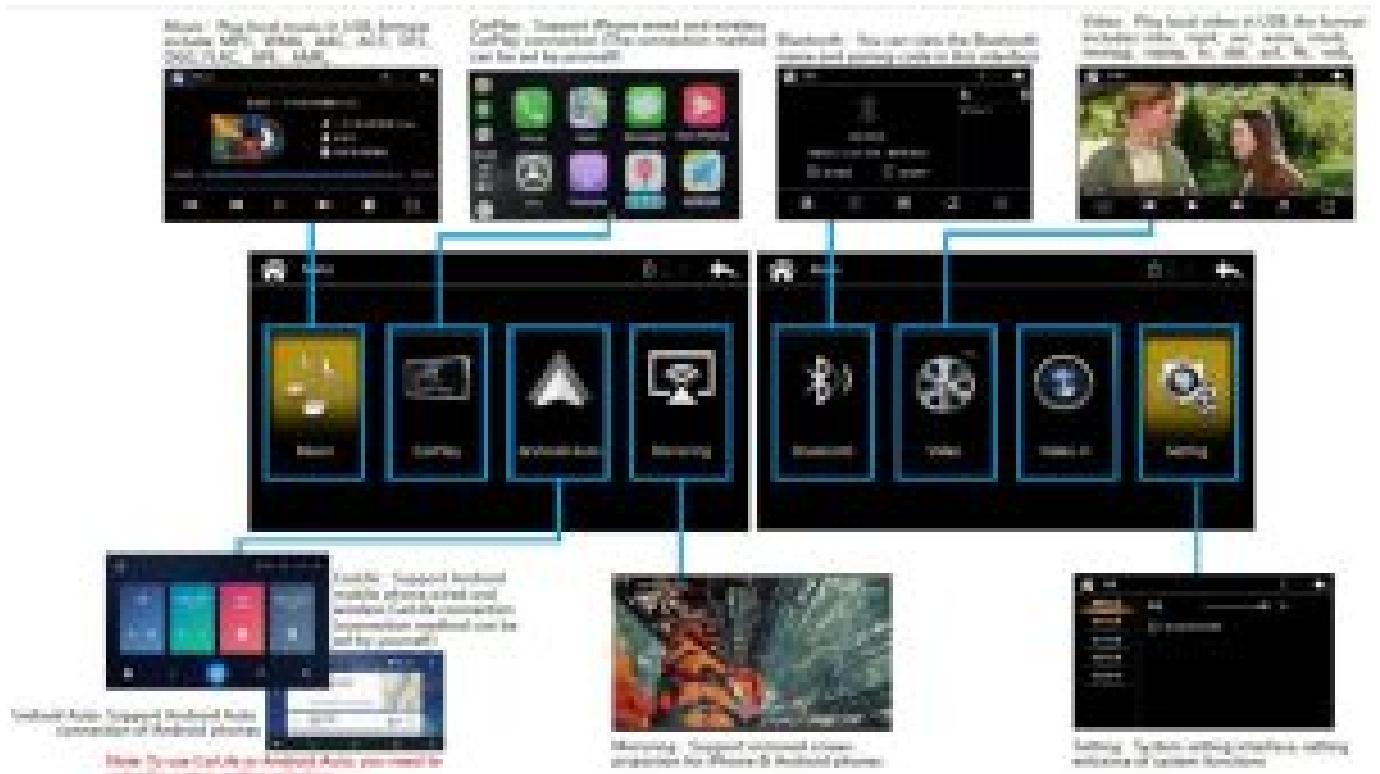
But following conditions are not covered by warranty:

- Damage caused by using, disassembling, or refitting product not following the instruction properly.

The product is damaged by improper transport or improper use.

Damage due to irresistible factors (such as fire, flood, traffic matters, therefore, lightning, earthquakes, etc.).

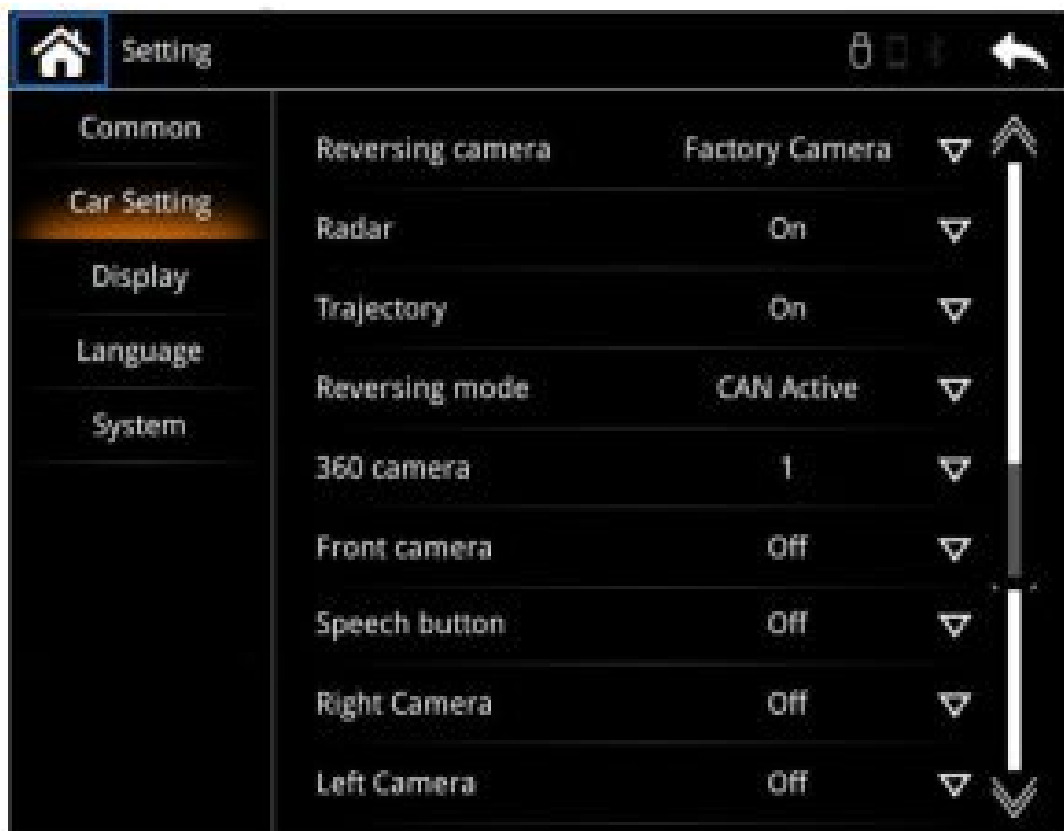
Interface introduction



System settings

Regarding system settings, after the vehicle is started, the main interface of the vehicle system will be displayed. In the main interface, there is a [Settings] button.

You can directly click the setting button to enter the main setting page. As shown in the following figure: each setting page of the system. Chart 2.1-System Settings “General Settings”



System settings “Original car settings”-“Driving-reversing camera” option



System Settings “Original Car Settings”-“-Panel- Contrast” Brightness” adjustment page



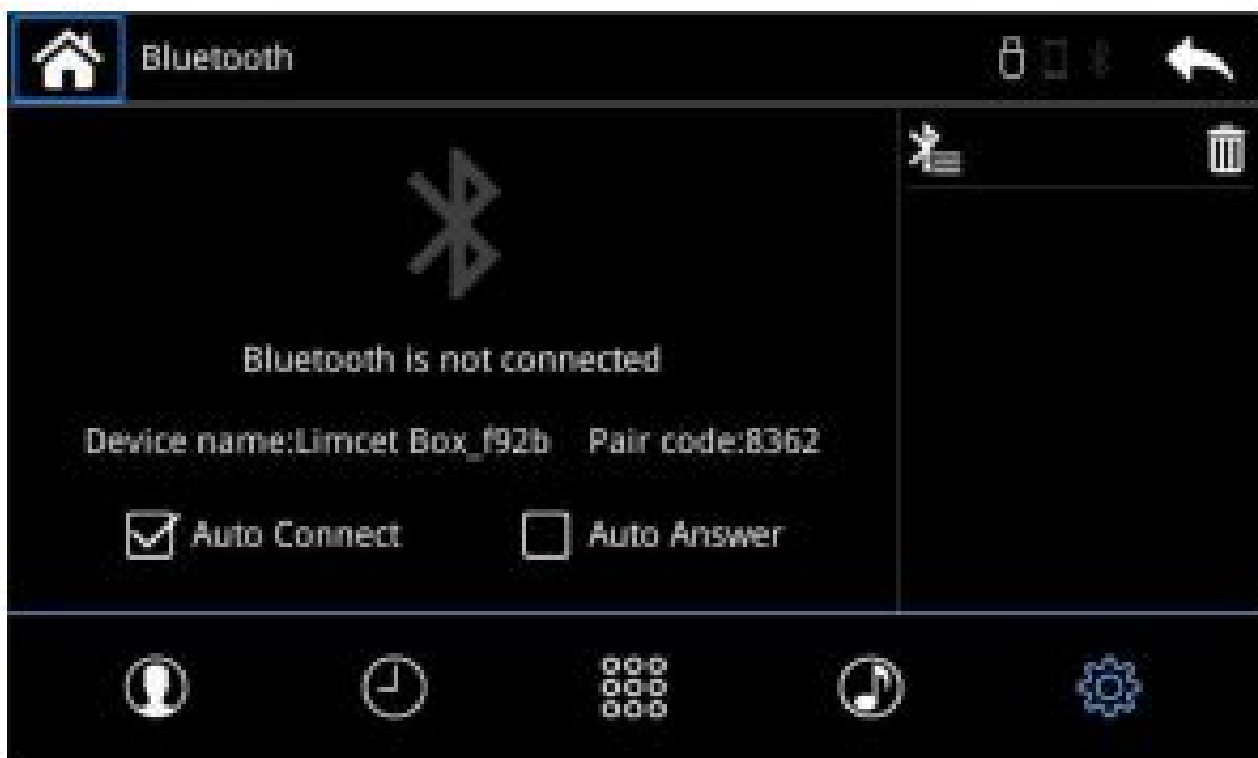
In this interface-click to show

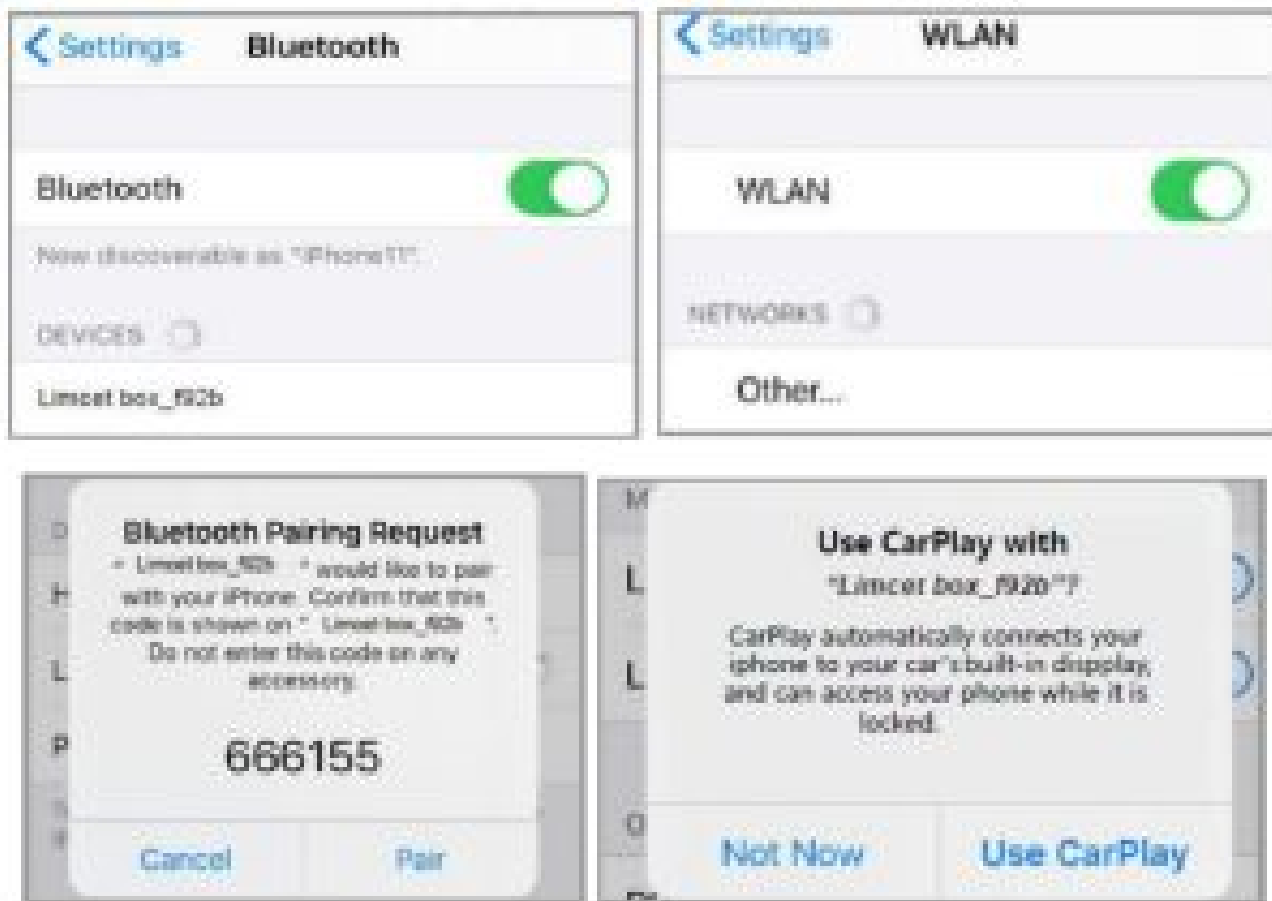


Enter brightness, contrast, chroma, saturation adjustment

Open Carplay to view the operating instructions

Bluetooth search example “right picture”





About network usage

The vehicle system uses the mobile phone's own network to use, and the traffic cost refers to the connected network. When the car system is connected to the wireless CarPlay, you only need to manually connect the Bluetooth of the mobile phone for the first time, and keep the Bluetooth of the mobile phone always on. After the CarPlay connection is successful, the Bluetooth of the mobile phone and the system will be automatically disconnected; then enter the WIFI authentication channel, and at the same time The mobile phone WIFI switch should also be turned on, but do not manually connect to the WIFI network of the local system. CarPlay will actively identify the dedicated hotspot and transmit the pop-up window to the car display. Install the mobile phone connection and the iPhone wired connection, just plug in the mobile phone data cable to complete the connection, no network is required

About driving safety

Drivers should not operate the machine during driving, so as not to affect safe driving and cause traffic accidents. Safety first, smart entertainment second, please strictly abide by national traffic regulations!

Postscript

So far, you have learned about the comprehensive and easy-to-use in-vehicle system software. You can now operate the car machine to experience the convenience and speed brought by the smart light screen system to your driving life, and enjoy the infinite joy brought by high technology! I wish you a smooth and safe journey! Due to the continuous upgrade of the software version, the screenshots in this manual may differ from the version you actually use without prior notice

FCC Caution

(1)§ 15.19 Labelling requirements.

This device complies with part 15 of the FCC Rules. Operation is subject to the following two conditions:
(1) This device may not cause harmful interference, and (2) this device must accept any interference received, including interference that may cause undesired operation.

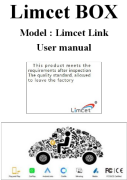
§ 15.21 Changes or modification warning Any Changes or modifications not expressly approved by the party responsible for compliance could void the user’s authority to operate the equipment. § 15.105 Information to the user.

Note: This equipment has been tested and found to comply with the limits for a Class B digital device, pursuant to part 15 of the FCC Rules. These limits are designed to provide reasonable protection against harmful interference in a residential installation. This equipment generates uses and can radiate radio frequency energy and, if not installed and used in accordance with the instructions, may cause harmful interference to radio communications. However, there is no guarantee that interference will not occur in a particular installation. If this equipment does cause harmful interference to radio or television reception, which can be determined by turning the equipment off and on, the user is encouraged to try to correct the interference by one or more of the following measures:

- Reorient or relocate the receiving antenna.
- Increase the separation between the equipment and receiver.
- Connect the equipment into an outlet on a circuit different from that to which the receiver is connected.
- Consult the dealer or an experienced radio/TV technician for help.

This equipment complies with FCC radiation exposure limits set forth for an uncontrolled environment. This equipment should be installed and operated with a minimum distance 20cm between the radiator and your body.

Documents / Resources

	<p>Limcet Limcet Link Wireless Carplay Android Retrofit Kit [pdf] User Manual LINK, 2AZ23-LINK, 2AZ23LINK, Limcet Link Wireless Carplay Android Retrofit Kit, Wireless Carplay Android Retrofit Kit, Android Retrofit Kit, Retrofit Kit</p>
-------------------------------------------------------------------------------------	-----------------------------------------------------------------------------------------------------------------------------------------------------------------------------------------------------------------------------------------------------------------