



# LILYGO T-WATCH-V3 Programmable Smart Watch User Guide

[Home](#) » [LILYGO](#) » LILYGO T-WATCH-V3 Programmable Smart Watch User Guide 

# LILYGO<sup>®</sup>

**T-WATCH-V3  
User Guide**

## Contents

- [1 About This Guide](#)
- [2 Introduction](#)
- [3 Get Started](#)
- [4 Configure](#)
- [5 Connect](#)
- [6 Test Demo](#)
- [7 Upload Sketch](#)
- [8 SSC Command Reference](#)
- [9 Documents / Resources](#)
  - [9.1 References](#)

## About This Guide

This document is intended to help users set up the basic software development environment for developing applications using hardware based on the T-Watch 2020.

Through a simple example, this document illustrates how to use Arduino, including the menu based configuration wizard, compiling the Arduino and firmware download to the ESP32 module.

## Release Notes

Date	Version	Release notes
2023.04	V1.0	First release.

## Introduction

### 1.1. T-Watch 2020 V3

T-WATCH-V3 is a development board. It can work independently.

It consists of ESP32 MCU supporting Wi-Fi + BT+ BLE communication protocol and motherboard PCB.

And this board has a 1.54-inch LCD screen.

For applications ranging from low-power sensor networks to the most demanding tasks.

At the core of this module is the ESP32-D0WD chip.

ESP32 integrates Wi-Fi (2.4 GHz band) and Bluetooth 4.2 solutions on a single chip, along with dual high performance cores and many other versatile peripherals. Powered by 40 nm technology, ESP32 provides a robust, highly integrated platform to meet the continuous demands for efficient power usage, compact design, security.

Xinyuan provides the basic hardware and software resources that empowers application developers to build their ideas around the ESP32 series hardware. The software development framework provided by Xinyuan is intended for rapidly developing Internet-of-Things (IoT) applications, with Wi-Fi, Bluetooth, flexible power management and other advanced system features.

The RF frequency range is 2.402 GHz to 2.480 GHz.

### 1.2. Arduino

A set of cross-platform applications written in Java. The Arduino Software IDE is derived from the Processing programming language and the integrated development environment of the Wiring program. Users can develop applications in Windows/Linux/macOS based on Arduino. It is recommended to use Windows 10. Windows OS has been used as an example in this document for illustration purposes.

### 1.3. Preparation

To develop applications for ESP32 you need:

- PC loaded with either Windows, Linux or Mac operating system
- Toolchain to build the Application for ESP32
- Arduino that essentially contains API for ESP32 and scripts to operate the Toolchain
- CH9102 serial port driver
- The ESP32 board itself and a USB cable to connect it to the PC

## Get Started

### 2.1. Download the Arduino Software

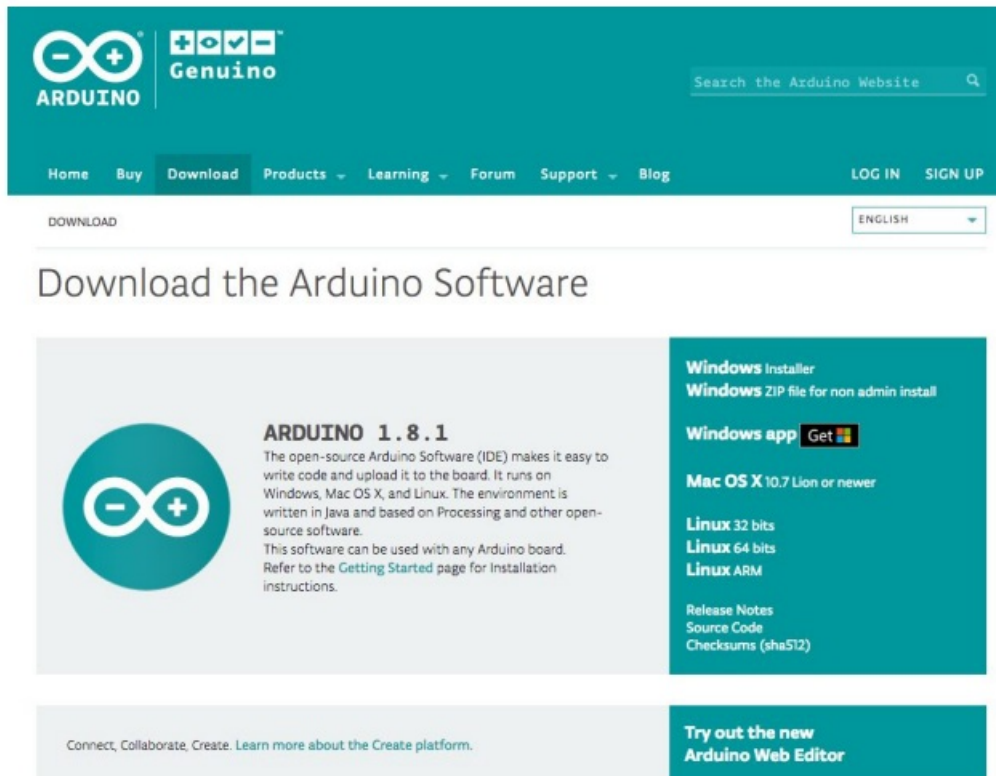
The quickest how to install the Arduino Software (IDE) on Windows machines

#### 2.1.1. Quick Start Guide

The website provides a quick start tutorial

- Windows:  
<https://www.arduino.cc/en/Guide/Windows>
- Linux:  
<https://www.arduino.cc/en/Guide/Linux>
- Mac OS X:  
<https://www.arduino.cc/en/Guide/MacOSX>

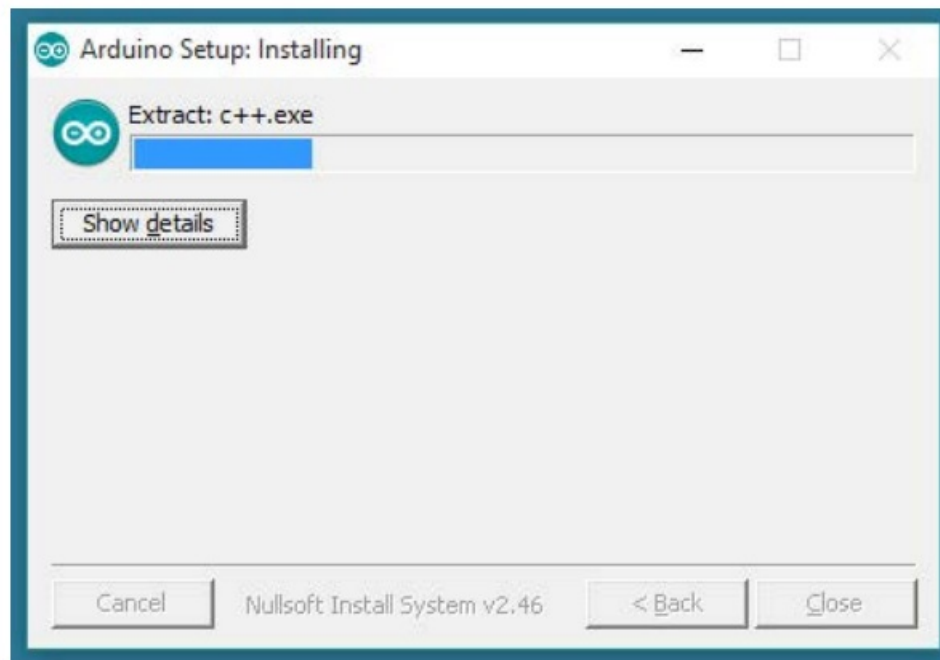
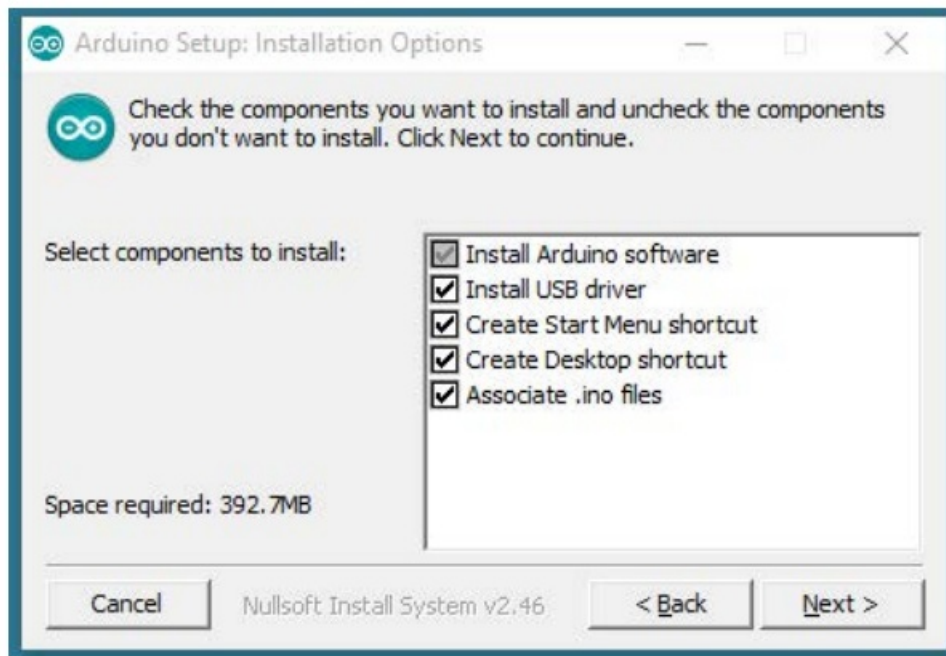
## 2.1.2. Installation steps for Windows platform Arduino



The screenshot shows the Arduino website's download page. The header features the Arduino and Genuino logos, a search bar, and navigation links: Home, Buy, Download (active), Products, Learning, Forum, Support, and Blog. There are also links for LOG IN and SIGN UP. Below the header, the word "DOWNLOAD" is displayed, followed by a language selector set to "ENGLISH". The main heading is "Download the Arduino Software". The content area is divided into two columns. The left column features the Arduino logo and the text "ARDUINO 1.8.1", describing it as open-source software (IDE) for Windows, Mac OS X, and Linux, written in Java and based on Processing. It mentions that the software can be used with any Arduino board and refers to the "Getting Started" page for installation instructions. The right column lists download options: "Windows Installer" and "Windows ZIP file for non admin install", followed by a "Windows app" button with a "Get" icon. Below these are links for "Mac OS X 10.7 Lion or newer", "Linux 32 bits", "Linux 64 bits", and "Linux ARM". At the bottom of this column are links for "Release Notes", "Source Code", and "Checksums (sha512)". A footer bar contains the text "Connect, Collaborate, Create. Learn more about the Create platform." and a button to "Try out the new Arduino Web Editor".

Enter the download interface, select Windows installer to install directly

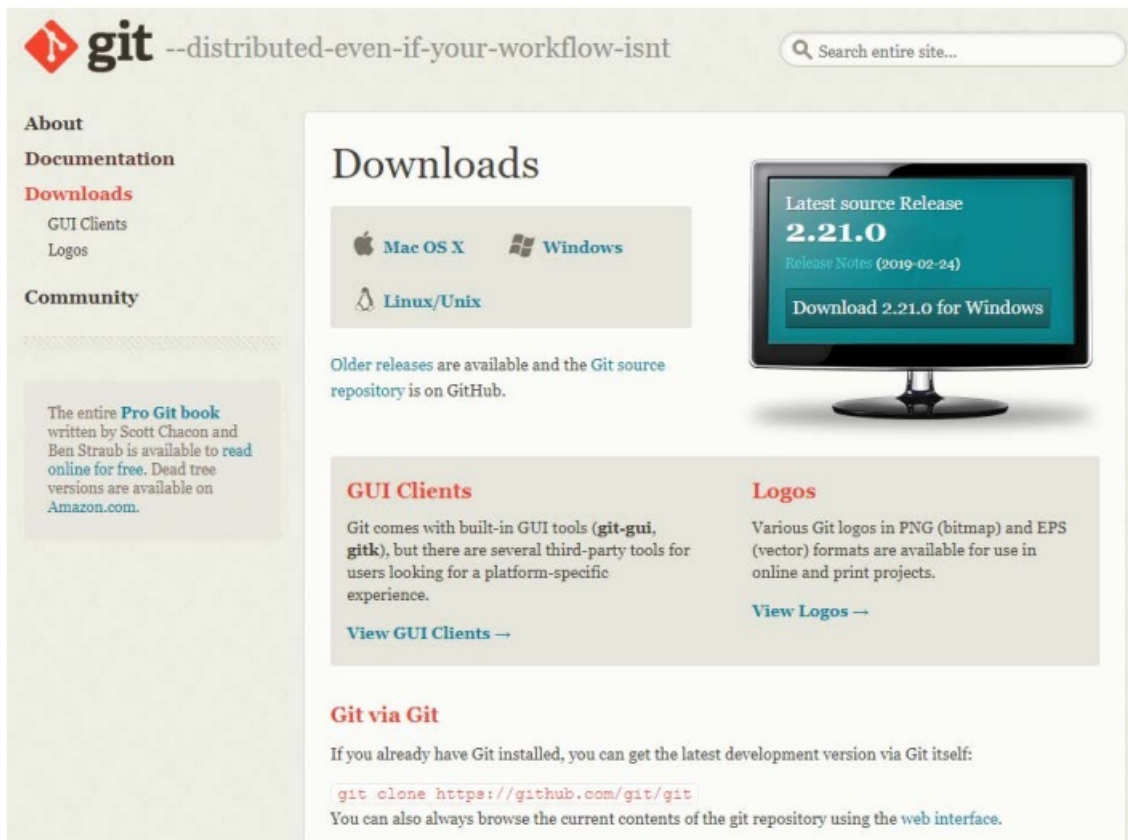
## 2.2. Install the Arduino Software



## Configure

### 3.1. Download Git

Download the installation package Git.exe



### 3.2. Pre-build configuration

Click Arduino icon, then right click and select "Open folder where "

Select hardware ->

Mouse \*\* Right click \*\* ->

Click Git Bash Here

### 3.3. Cloning a remote repository

```
$ mkdir espressif
```

```
$ cd espressif
```

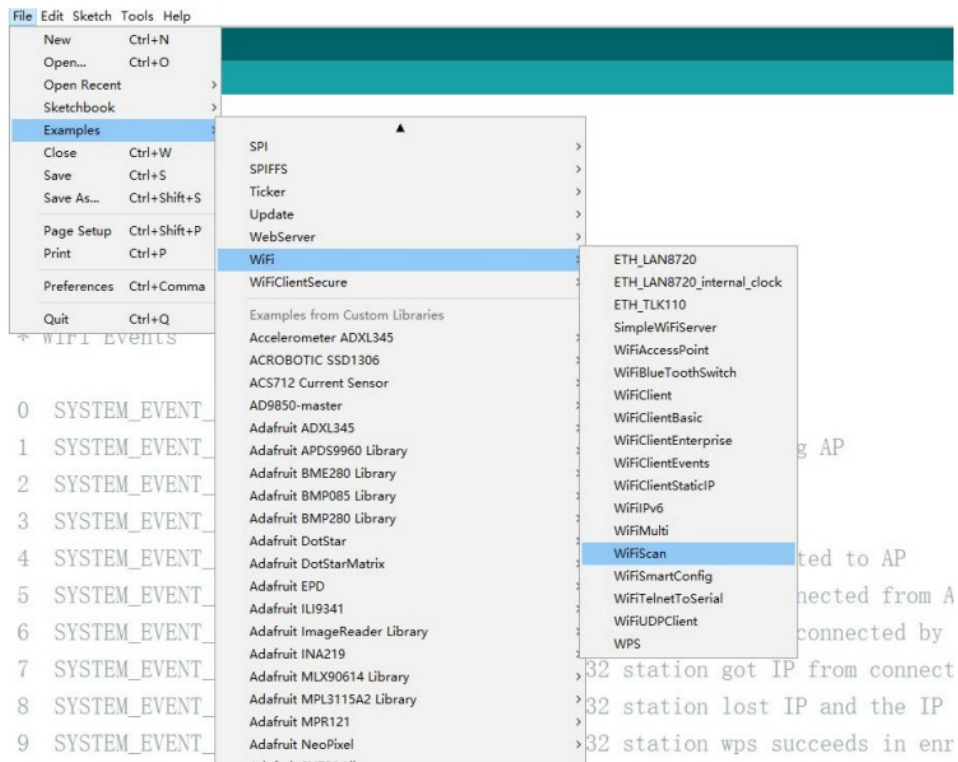
```
$ git clone --recursive https://github.com/espressif/arduino-esp32.git
```

## Connect

You are almost there. To be able to proceed further, connect ESP32 board to PC, check under what serial port the board is visible and verify if serial communication works.

## Test Demo

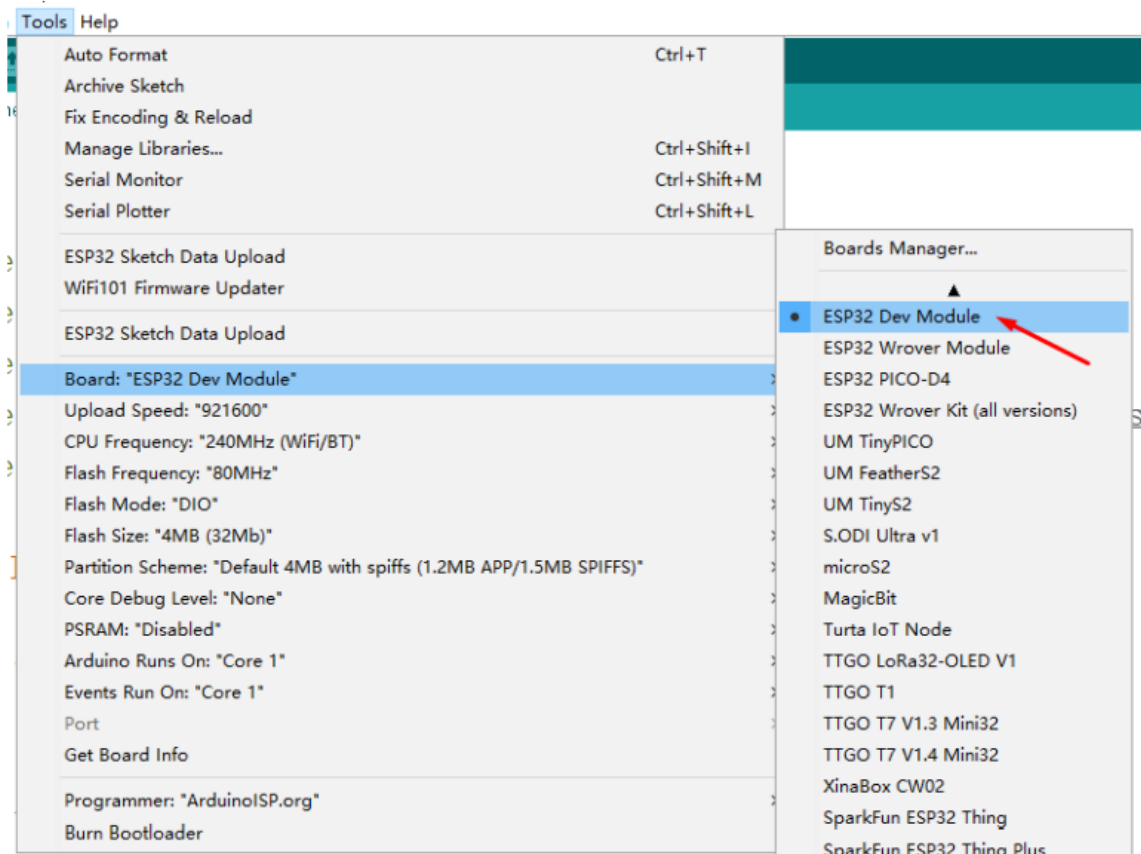
Select File>>Example>>WiFi>>WiFiScan



## Upload Sketch

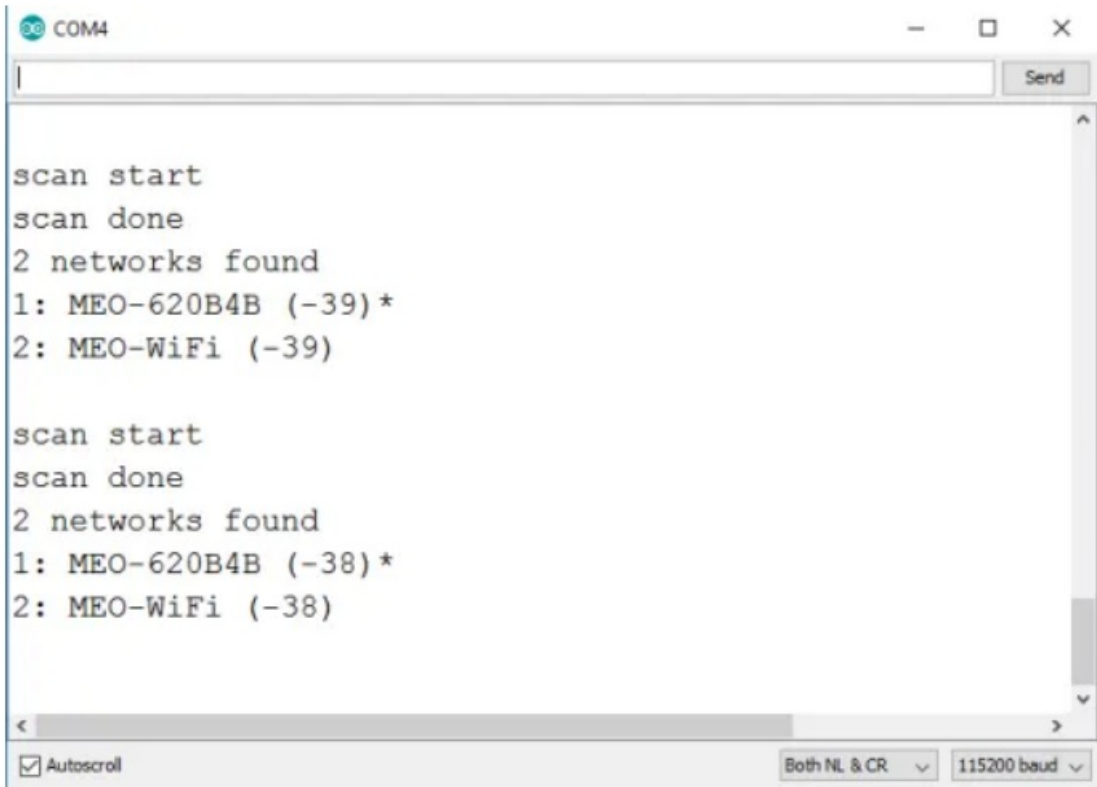
### 6.1. Select Board

Tools<<Board<<ESP32 Dev Module



### 6.2. Upload

Sketch << Upload



SSC Command Reference

Here lists some common Wi-Fi commands for you to test the module.

7.1. op

Description

op commands are used to set and query the Wi-Fi mode of the system.

Example

op -Q

op -S -o wmode

Parameter

Table 6-1. op Command Parameter

Parameter	Description
-Q	Query Wi-Fi mode.
-S	Set Wi-Fi mode.
w mode	There are 3 Wi-Fi modes: <ul style="list-style-type: none"><li>• mode = 1: STA mode</li><li>• mode = 2: AP mode</li><li>• mode = 3: STA+AP mode</li></ul>

7.2. sta

Description

sat commands are used to scan the STA network interface, connect or disconnect AP, and query the connecting status of STA network interface.

#### Example

```
sta -S [-s ssid] [-b bssid] [-n channel] [-h] sta -Q
```

```
sta -C [-s ssid] [-p password] sta -D
```

#### Parameter

**Table 6-2. sta Command Parameter**

Parameter	Description
-S scan	Scan Access Points.
-s ssid	Scan or connect Access Points with the ssid.
-b bssid	Scan the Access Points with the bssid.
-n channel	Scan the channel.
-h	Show scan results with hidden ssid Access Points.
-Q	Show STA connect status.
-D	Disconnected with current Access Points.

### 7.3. ap

#### Description

ap commands are used to set the parameter of AP network interface.

#### Example

```
ap -S [-s ssid] [-p password] [-t encrypt] [-n channel] [-h] [-m max_sta]
```

```
ap -Q
```

```
ap -L
```

**Table 6-3. ap Command Parameter**

Parameter	Description
-S	Set AP mode.
-s ssid	Set AP ssid.
-p password	Set AP password.
-t encrypt	Set AP encrypt mode.
-h	Hide ssid.
-m max_sta	Set AP max connections.
-Q	Show AP parameters.
-L	Show MAC Address and IP Address of the connected station.

### 7.4. mac

#### Description

mac commands are used to query the MAC address of the network interface.

#### Example



mac -Q [-o mode]

#### Parameter

**Table 6-4. mac Command Parameter**

Parameter	Description
-Q	Show MAC address.
-o mode	<ul style="list-style-type: none"><li>• mode = 1: MAC address in STA mode.</li><li>• mode = 2: MAC address in AP mode.</li></ul>

### 7.5. dhcp

#### Description

dhcp commands are used to enable or disable dhcp server/client.

#### Example

dhcp -S [-o mode] dhcp -E [-o mode] dhcp -Q [-o mode]

#### Parameter

**Table 6-5. dhcp Command Parameter**

Parameter	Description
-S	Start DHCP (Client/Server).
-E	End DHCP (Client/Server).
-Q	show DHCP status.
-o mode	<ul style="list-style-type: none"><li>• mode = 1 : DHCP client of STA interface.</li><li>• mode = 2 : DHCP server of AP interface.</li><li>• mode = 3 : both.</li></ul>

### 7.6. ip

#### Description

ip command are used to set and query the IP address of the network interface.

#### Example

ip -Q [-o mode] ip -S [-i ip] [-o mode] [-m mask] [-g gateway]

#### Parameter

**Table 6-6. ip Command Parameter**

Parameter	Description
-Q	Show IP address.
-o mode	<ul style="list-style-type: none"> <li>• mode = 1 : IP address of interface STA.</li> <li>• mode = 2 : IP address of interface AP.</li> <li>• mode = 3 : both</li> </ul>
-S	Set IP address.
-i ip	IP address.
-m mask	Subnet address mask.
-g gateway	Default gateway.

### 7.7. reboot

#### Description

reboot command is used to reboot the board.

#### Example

reboot

### 7.8. ram

ram command is used to query the size of the remaining heap in the system.

#### Example

ram

Any Changes or modifications not expressly approved by the party responsible for compliance could void the user's authority to operate the equipment.

This device complies with part 15 of the FCC Rules. Operation is subject to the following two conditions: (1) This device may not cause harmful interference, and (2) this device must accept any interference received, including interference that may cause undesired operation.

**Note:** This equipment has been tested and found to comply with the limits for a Class B digital device, pursuant to part 15 of the FCC Rules. These limits are designed to provide reasonable protection against harmful interference in a residential installation. This equipment generates, uses and can radiate radio frequency energy and, if not installed and used in accordance with the instructions, may cause harmful interference to radio communications. However, there is no guarantee that interference will not occur in a particular installation. If this equipment does cause harmful interference to radio or television reception, which can be determined by turning the equipment off and on, the user is encouraged to try to correct the interference by one or more of the following measures:

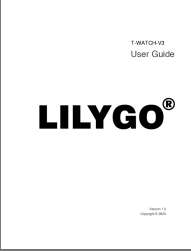
- Reorient or relocate the receiving antenna.
- Increase the separation between the equipment and receiver.
- Connect the equipment into an outlet on a circuit different from that to which the receiver is connected.
- Consult the dealer or an experienced radio/TV technician for help.

This device complies with FCC radiation exposure requirement set forth for an uncontrolled environment.





**LILYGO®**

Version 1.0  
Copyright © 2023

## Documents / Resources

	<p><a href="#">LILYGO T-WATCH-V3 Programmable Smart Watch</a> [pdf] User Guide 2ASYE-T-WATCHV3, 2ASYETWATCHV3, T-WATCH-V3 Programmable Smart Watch, T-WATCH-V3, Watch, Smart Watch, T-WATCH-V3 Smart Watch, Programmable Smart Watch</p>
---	--

## References

-  [GitHub - espressif/arduino-esp32: Arduino core for the ESP32](#)
-  [Arduino IDE 1 Installation \(Linux\) | Arduino Documentation](#)
-  [Arduino IDE 1 Installation \(macOS\) | Arduino Documentation](#)
-  [Arduino IDE 1 Installation \(Windows\) | Arduino Documentation](#)

Manuals+.