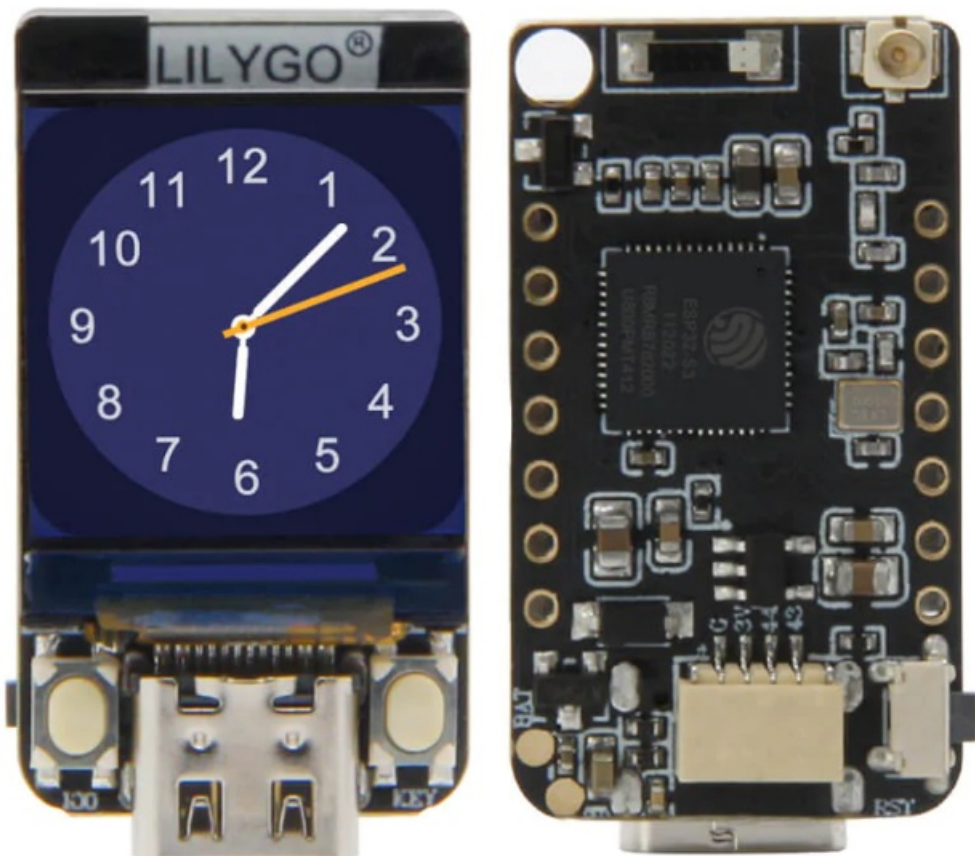




## LILYGO T-QT Pro Microprocessor User Guide

[Home](#) » [LILYGO](#) » LILYGO T-QT Pro Microprocessor User Guide 

### LILYGO T-QT Pro Microprocessor



## Contents

- 1 About This Guide
  - 1.1 Release Notes
- 2 Introduction
  - 2.1 T-QT-Pro
  - 2.2 Arduino
- 3 Get Started
  - 3.1 Download the Arduino Software
  - 3.2 Install the Arduino Software
- 4 Configure
  - 4.1 Download Git
  - 4.2 Pre-build configuration
  - 4.3 Cloning a remote repository
- 5 Connect
- 6 Test Demo
- 7 Upload Sketch
  - 7.1 Select Board
  - 7.2 Upload
  - 7.3 Serial Monitor
- 8 SSC Command Reference
  - 8.1 op
  - 8.2 sta
  - 8.3 ap
  - 8.4 mac
  - 8.5 dhcp
  - 8.6 ip
  - 8.7 reboot
  - 8.8 ram
  - 8.9 FCC Caution:
  - 8.10 IMPORTANT NOTE:
  - 8.11 FCC Radiation Exposure Statement:
- 9 Documents / Resources
  - 9.1 References
- 10 Related Posts

## About This Guide

This document is intended to help users set up the basic software development environment for developing applications using hardware based on the T-QT Pro. Through a simple example, this document illustrates how to use Arduino, including the menu based configuration wizard, compiling the Arduino and firmware download to the ESP32-S3 module.

### Release Notes

Date	Version	Release notes
2022.11	V1.0	First release.

## Introduction

### T-QT-Pro

T-QT-Pro is a development board. It can work independently.

It consists of ESP32-S3 MCU supporting Wi-Fi + BLE communication protocol and motherboard

PCB. The screen is 0.85 inch IPS LCD GC9107.

At the core of this module is the ESP32S3 chip.

ESP32-S3 integrates Wi-Fi (2.4 GHz band) and Bluetooth 5.0(LE) solutions on a single chip, along with dual high performance cores and many other versatile peripherals. Powered by 40 nm technology, ESP32-S3 provides a robust, highly integrated platform to meet the continuous demands for efficient power usage, compact design, security, high performance, and reliability.

Xinyuan provides the basic hardware and software resources that empowers application developers to build their ideas around the ESP32-S3 series hardware. The software development framework provided by Xinyuan is intended for rapidly developing Internet-of-Things (IoT) applications, with Wi-Fi, Bluetooth, flexible power management and other advanced system features.

The RF frequency range is 2.412 GHz to 2.4 GHz. (WIFI) 72 BLE: 2402-2480MHz

The T-QT-Pro manufacturer is Shenzhen Xin Yuan Electronic Technology Co., Ltd.

## **Arduino**

A set of cross-platform applications written in Java. The Arduino Software IDE is derived from the Processing programming language and the integrated development environment of the Wiring program. Users can develop applications in Windows/Linux/ MacOS based on Arduino. It is recommended to use Windows 10. Windows OS has been used as an example in this document for illustration purposes.

## **Preparation**

To develop applications for ESP32-S3 you need:

- PC loaded with either Windows, Linux or Mac operating system
- Toolchain to build the Application for ESP32-S3
- Arduino that essentially contains API for ESP32-S3 and scripts to operate the Toolchain
- The ESP32-S3 board itself and a USB cable to connect it to the PC

## **Get Started**

### **Download the Arduino Software**

The quickest how to install the Arduino Software (IDE) on Windows machines

### **Quick Start Guide**

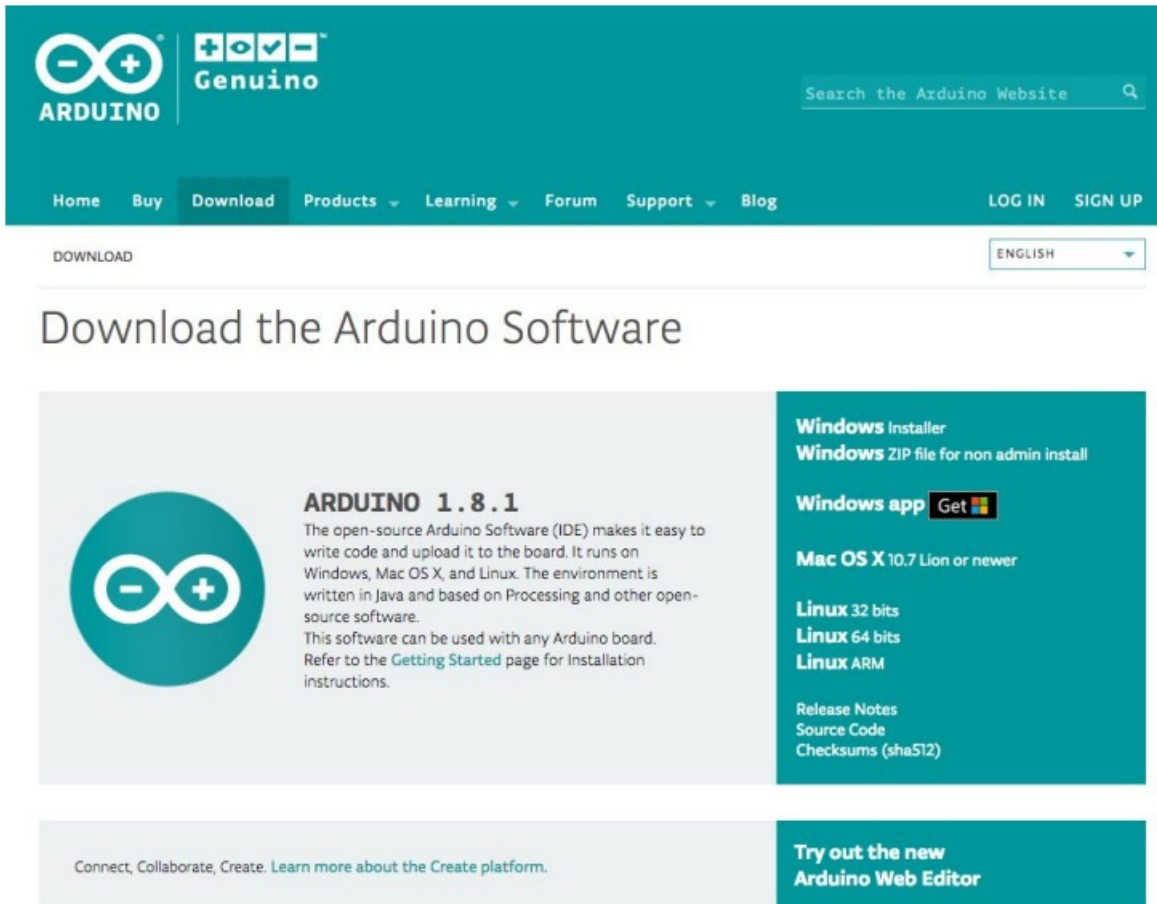
The website provides a quick start tutorial

- Windows:  
<https://www.arduino.cc/en/Guide/Windows>
- Linux:  
<https://www.arduino.cc/en/Guide/Linux>

- Mac OS X:

<https://www.arduino.cc/en/Guide/MacOSX>

## Installation steps for Windows platform Arduino



The screenshot shows the Arduino website's download page. At the top, there's a teal header with the Arduino and Genuino logos, a search bar, and navigation links: Home, Buy, Download (highlighted), Products, Learning, Forum, Support, and Blog. There are also links for LOG IN and SIGN UP. Below the header, the word 'DOWNLOAD' is on the left and 'ENGLISH' with a dropdown arrow is on the right. The main heading is 'Download the Arduino Software'. Below this, there's a large light gray box on the left containing the Arduino logo and text for 'ARDUINO 1.8.1', describing it as open-source software for Windows, Mac OS X, and Linux. To the right of this box is a teal box with links for 'Windows Installer', 'Windows ZIP file for non admin install', 'Windows app' (with a 'Get' button), 'Mac OS X 10.7 Lion or newer', 'Linux 32 bits', 'Linux 64 bits', and 'Linux ARM'. At the bottom of the teal box are links for 'Release Notes', 'Source Code', and 'Checksums (sha512)'. Below the main content area, there's a light gray bar with the text 'Connect, Collaborate, Create. Learn more about the Create platform.' and a teal bar with the text 'Try out the new Arduino Web Editor'.

ARDUINO 1.8.1

The open-source Arduino Software (IDE) makes it easy to write code and upload it to the board. It runs on Windows, Mac OS X, and Linux. The environment is written in Java and based on Processing and other open-source software. This software can be used with any Arduino board. Refer to the [Getting Started](#) page for installation instructions.

**Windows Installer**  
**Windows ZIP file for non admin install**

**Windows app** [Get](#)

**Mac OS X 10.7 Lion or newer**

**Linux 32 bits**  
**Linux 64 bits**  
**Linux ARM**

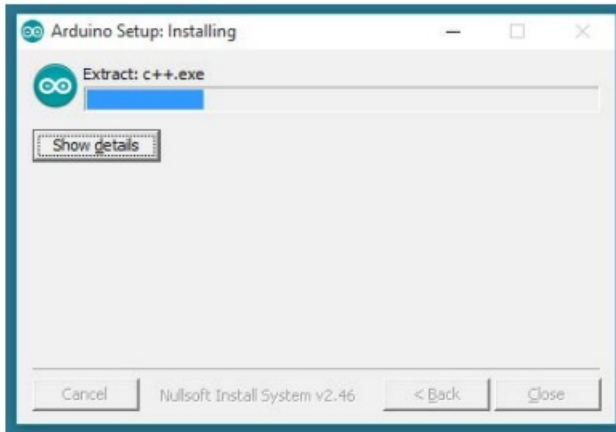
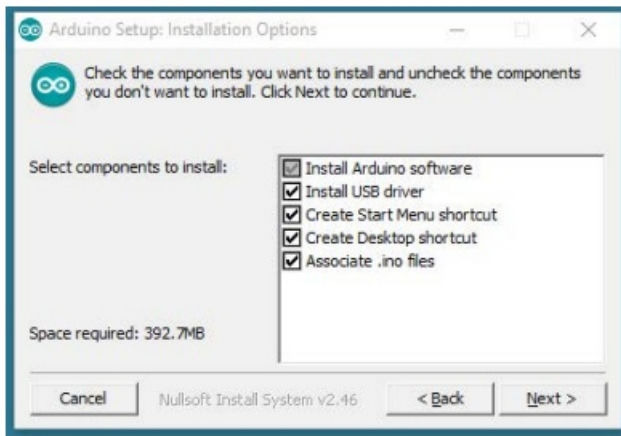
[Release Notes](#)  
[Source Code](#)  
[Checksums \(sha512\)](#)

Connect, Collaborate, Create. [Learn more about the Create platform.](#)

**Try out the new Arduino Web Editor**

*Enter the download interface, select **Windows installer** to install directly*

## Install the Arduino Software



Wait for installation

## Configure

### Download Git

Download the installation package Git.exe

**git** --distributed-even-if-your-workflow-isnt

**About**

**Documentation**

**Downloads**

GUI Clients

Logos

**Community**

The entire **Pro Git book** written by Scott Chacon and Ben Straub is available to [read online for free](#). Dead tree versions are available on [Amazon.com](#).

## Downloads

Mac OS X
 Windows

Linux/Unix

Older releases are available and the Git source repository is on GitHub.

Latest source Release

**2.21.0**

Release Notes (2019-02-24)

[Download 2.21.0 for Windows](#)

**GUI Clients**

Git comes with built-in GUI tools (**git-gui**, **gitk**), but there are several third-party tools for users looking for a platform-specific experience.

[View GUI Clients →](#)

**Logos**

Various Git logos in PNG (bitmap) and EPS (vector) formats are available for use in online and print projects.

[View Logos →](#)

**Git via Git**

If you already have Git installed, you can get the latest development version via Git itself:

```
git clone https://github.com/git/git
```

You can also always browse the current contents of the git repository using the [web interface](#).

## Pre-build configuration

Click Arduino icon, then right click and select “Open folder where “

Select hardware ->

Mouse \*\* Right click \*\* ->

Click Git Bash Here

## Cloning a remote repository

```
$ mkdir espressif
```

```
$ cd espressif
```

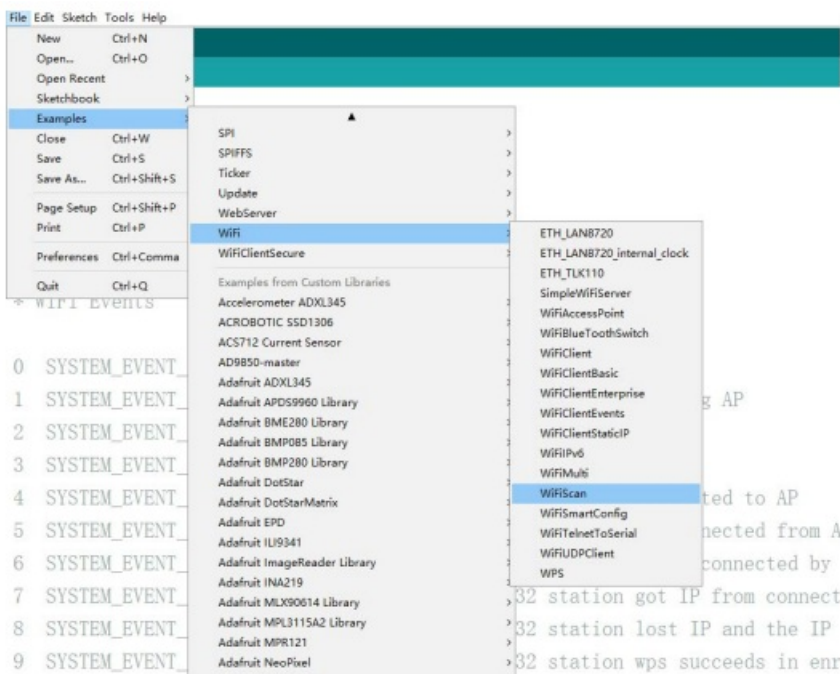
```
$ git clone --recursive https://github.com/espressif/arduino-esp32.git esp32
```

## Connect

You are almost there. To be able to proceed further, connect ESP32-S3 board to PC, check under what serial port the board is visible and verify if serial communication works.

## Test Demo

Select File>>Example>>WiFi>>WiFi Scan

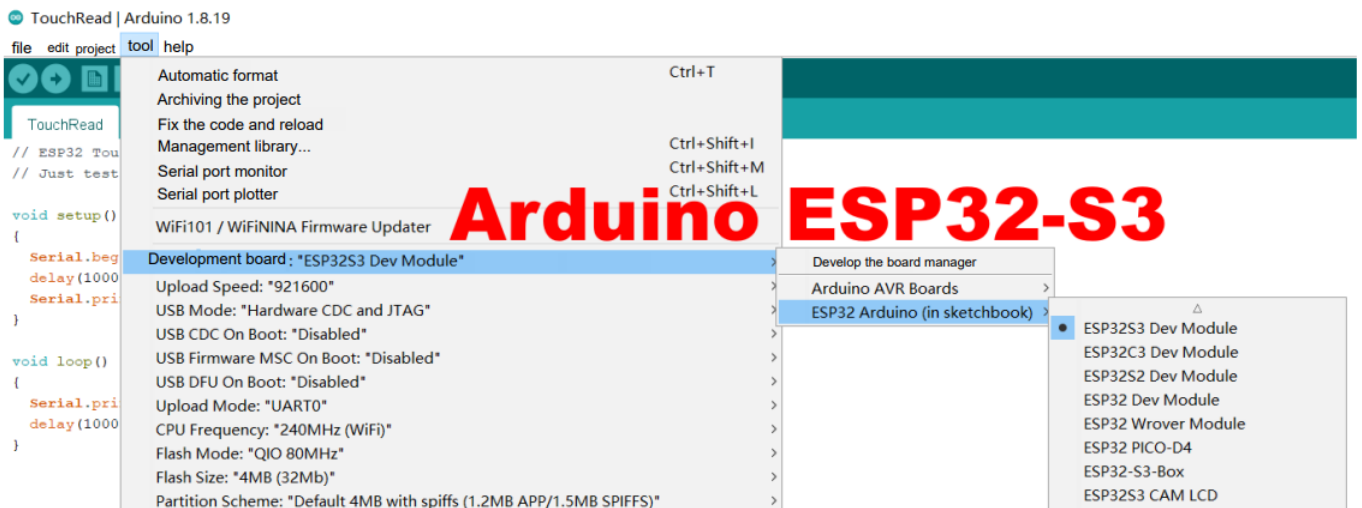


## Upload Sketch

### Select Board

Tools&lt;&lt;Board&lt;&lt;ESP32S3 Dev Module



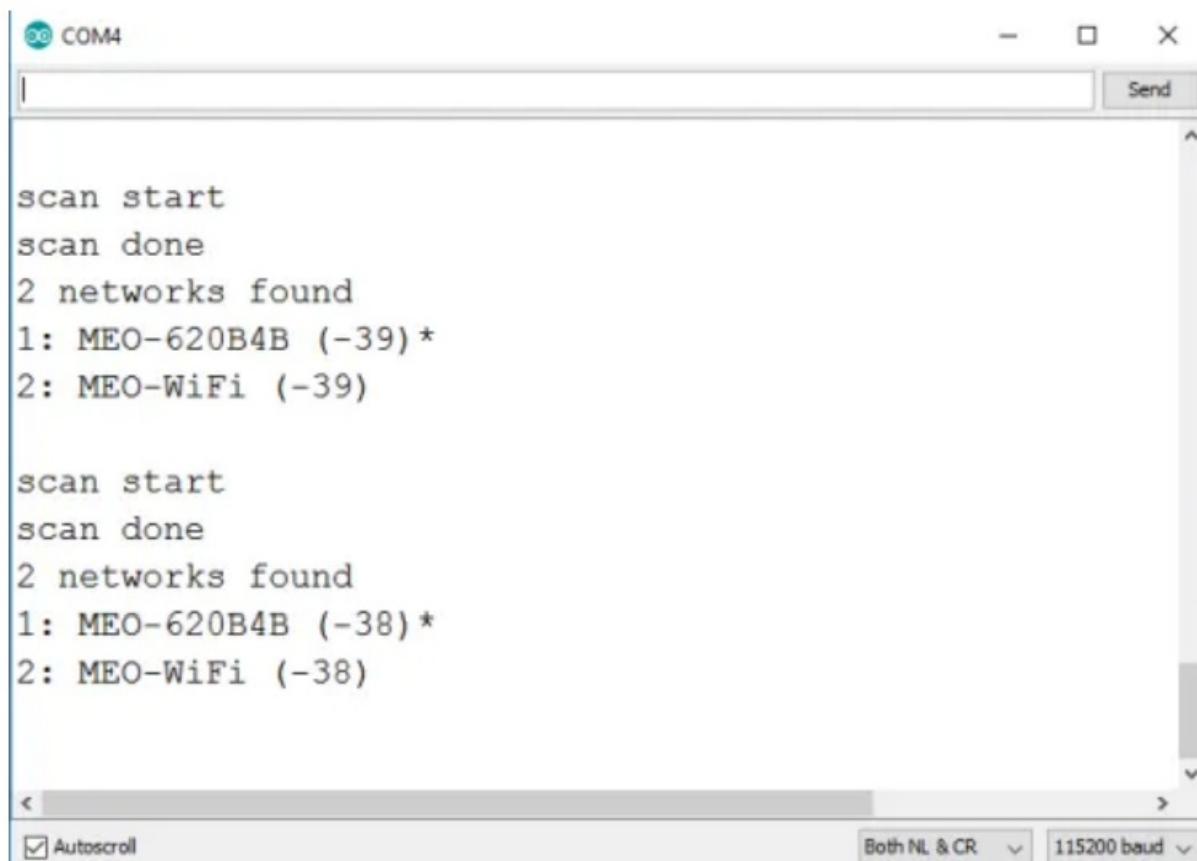


## Upload

Sketch -> Upload

## Serial Monitor

Tools -> Serial Monitor



## SSC Command Reference

Here lists some common Wi-Fi commands for you to test the module.

op

## Description

op commands are used to set and query the Wi-Fi mode of the system.

## Example

```
op -Q
op -S -o wmode
```

## Parameter

**Table 6-1. op Command Parameter**

Parameter	Description
-Q	Query Wi-Fi mode.
-S	Set Wi-Fi mode.
wmode	There are 3 Wi-Fi modes: <ul style="list-style-type: none"><li>• mode = 1: STA mode</li><li>• mode = 2: AP mod</li><li>• mode = 3: STA+AP mode</li></ul>

## sta

## Description

sta commands are used to scan the STA network interface, connect or disconnect AP, and query the connecting status of STA network interface.

## Example

```
sta -S [-s ssid] [-b bssid] [-n channel] [-h]
sta -Q
sta -C [-s ssid] [-p password]
sta -D
```



Parameter

Table 6-2. sta Command Parameter

Parameter	Description
-S scan	Scan Access Points
-s ssid	Scan or connect Access Points with the ssid.
-b bssid	Scan the Access Points with the bssid.
-n channel	Scan the channel.
-h	Show scan results with hidden ssid Access Points.
-Q	Show STA connect status.
-D	Disconnected with current Access Points.

ap

Description

ap commands are used to set the parameter of AP network interface.

Example

```
ap -S [-s ssid] [-p password] [-t encrypt] [-n channel] [-h] [-m max_sta]
ap -Q
ap -L
```

Parameter

Table 6-3. ap Command Parameter

Parameter	Description
-S	Set AP mode.
-s ssid	Set AP ssid.
-p password	Set AP password.
-t encrypt	Set AP encrypt mode.
-h	Hide ssid.
-m max_sta	Set AP max connections.
-Q	Show AP parameters.
-L	Show MAC Address and IP Address of the connected station.

## mac

### Description

mac commands are used to query the MAC address of the network interface.

### Example

```
mac -Q [-o mode]
```

### Parameter

**Table 6-4. mac Command Parameter**

Parameter	Description
-Q	Show MAC address
-o mode	<ul style="list-style-type: none"> <li>mode = 1: MAC address in STA mode.</li> <li>mode = 2: MAC address in AP mode.</li> </ul>

## dhcp

### Description

dhcp commands are used to enable or disable dhcp server/client.

### Example

```
dhcp -S [-o mode]
dhcp -E [-o mode]
dhcp -Q [-o mode]
```

### Parameter

**Table 6-5. dhcp Command Parameter**

Parameter	Description
-S	Start DHCP (Client/Server).
-E	End DHCP (Client/Server).
-Q	show DHCP status.
-o mode	<ul style="list-style-type: none"> <li>• mode = 1 : DHCP client of STA interface.</li> <li>• mode = 2 : DHCP server of AP interface.</li> <li>• mode = 3 : both.</li> </ul>

## ip

### Description

ip command are used to set and query the IP address of the network interface.

### Example

```
ip -Q [-o mode]
ip -S [-i ip] [-o mode] [-m mask] [-g gateway]
```

### Parameter

**Table 6-6. ip Command Parameter**

Parameter	Description
-Q	Show IP address.
-o mode	<ul style="list-style-type: none"> <li>• mode = 1 : IP address of interface STA.</li> <li>• mode = 2 : IP address of interface AP.</li> <li>• mode = 3 : both</li> </ul>
-S	Set IP address.
-i ip	IP address.
-m mask	Subnet address mask.
-g gateway	Default gateway.

## reboot

### Description

reboot command is used to reboot the board.

### Example

```
reboot
```

## ram

ram command is used to query the size of the remaining heap in the system.

### Example

ram

#### FCC Caution:

Any Changes or modifications not expressly approved by the party responsible for compliance could void the user's authority to operate the equipment.

This device complies with part 15 of the FCC Rules. Operation is subject to the following two conditions: (1) This device may not cause harmful interference, and (2) this device must accept any interference received, including interference that may cause undesired operation.

This transmitter must not be co-located or operating in conjunction with any other antenna or transmitter.

#### IMPORTANT NOTE:

Note: This equipment has been tested and found to comply with the limits for a Class B digital device, pursuant to part 15 of the FCC Rules. These limits are designed to provide reasonable protection against harmful interference in a residential installation. This equipment generates, uses and can radiate radio frequency energy and, if not installed and used in accordance with the instructions, may cause harmful interference to radio communications. However, there is no guarantee that interference will not occur in a particular installation. If this equipment does cause harmful interference to radio or television reception, which can be determined by turning the equipment off and on, the user is encouraged to try to correct the interference by one or more of the following measures:


- Reorient or relocate the receiving antenna.
- Increase the separation between the equipment and receiver.
- Connect the equipment into an outlet on a circuit different from that to which the receiver is connected.
- Consult the dealer or an experienced radio/TV technician for help.

#### FCC Radiation Exposure Statement:





This equipment complies with FCC radiation exposure limits set forth for an uncontrolled environment. This equipment should be installed and operated with minimum distance 20cm between the radiator & your body.

# LILYGO®

#### Documents / Resources

 <small>T-QT Pro User Guide</small>	<a href="#">LILYGO T-QT Pro Microprocessor</a> [pdf] User Guide T-QT-PRO, TQTPRO, 2ASYE-T-QT-PRO, 2ASYETQTPRO, T-QT Pro Microprocessor, T-QT Pro , Microprocessor
---	---

## References

-  [GitHub - espressif/arduino-esp32: Arduino core for the ESP32](#)
-  [Arduino IDE 1 Installation \(Linux\) | Arduino Documentation | Arduino Documentation](#)
-  [Arduino IDE 1 Installation \(macOS\) | Arduino Documentation | Arduino Documentation](#)
-  [Arduino IDE 1 Installation \(Windows\) | Arduino Documentation | Arduino Documentation](#)

Manuals+.