

LILYGO®

T-Circle S3 Speaker
Microphone Wireless
Module



LILYGO T-Circle S3 Speaker Microphone Wireless Module User Guide

[Home](#) » [LILYGO](#) » LILYGO T-Circle S3 Speaker Microphone Wireless Module User Guide 

Contents

- [1 LILYGO T-Circle S3 Speaker Microphone Wireless Module](#)
- [2 About This Guide](#)
- [3 Introduction](#)
- [4 Get Started](#)
- [5 Configure](#)
- [6 Connect](#)
- [7 Test Demo](#)
- [8 SSC Command Reference](#)
- [9 FCC Caution](#)
- [10 Documents / Resources](#)
 - [10.1 References](#)

LILYGO®

LILYGO T-Circle S3 Speaker Microphone Wireless Module



About This Guide

This document is intended to help users set up the basic software development environment for developing app using hardware based on the T-Circle S3.

Through a simple example, this document illustrates how to use Arduino, including the menu based configuration wizard, compiling the Arduino and firmware download to the ESP32-S3 module.

Release Notes

Date	Version	Release notes
2024.12	V1.0	First release.

Introduction

T-Circle S3

T-Circle S3 is a development board. It can work independently.

It consists of ESP32-S3 MCU supporting Wi-Fi + BLE communication protocol and motherboard PCB. The screen is 0.75 inch LCD.

At the core of this module is the ESP32-S3-R8 chip.

ESP32-S3 integrates Wi-Fi (2.4 GHz band) and Bluetooth 5.0 solutions on a single chip, along with dual high performance cores and many other versatile peripherals. Powered by 40 nm technology, ESP32-S3 provides a robust, highly integrated platform to meet the continuous demands for efficient power usage, compact design, security, high performance, and reliability.

Xinyuan provides the basic hardware and software resources that empowers application developers to build their ideas around the ESP32-S3 series hardware. The software development framework provided by Xinyuan is intended for rapidly developing Internet-of-Things (IoT) applications, with Wi-Fi, Bluetooth, flexible power management and other advanced system features.

The T-Circle S3 manufacturer is Xin Yuan Electronic Technology Co., Ltd.

Arduino

A set of cross-platform applications written in Java. The Arduino Software IDE is derived from the Processing

programming language and the integrated development environment of the Wiring program. Users can develop applications in Windows/Linux/macOS based on Arduino. It is recommended to use Windows 10. Windows OS has been used as an example in this document for illustration purposes.

Preparation

To develop applications for ESP32-S3 you need:

- PC loaded with either Windows, Linux or Mac operating system
- Toolchain to build the Application for ESP32-S3
- Arduino that essentially contains API for ESP32-S3 and scripts to operate the Toolchain
- The ESP32-S3 board itself and a USB cable to connect it to the PC

Get Started


Download the Arduino Software

The quickest how to install the Arduino Software (IDE) on Windows machines
The website provides a quick start tutorial

- Windows: <https://www.arduino.cc/en/Guide/Windows>
- Linux: <https://www.arduino.cc/en/Guide/Linux>
- Mac OS X: <https://www.arduino.cc/en/Guide/MacOSX>

Installation steps for Windows platform Arduino

Download the Arduino Software




ARDUINO 1.8.1

The open-source Arduino Software (IDE) makes it easy to write code and upload it to the board. It runs on Windows, Mac OS X, and Linux. The environment is written in Java and based on Processing and other open-source software.

This software can be used with any Arduino board. Refer to the [Getting Started](#) page for Installation instructions.

Windows installer
Windows ZIP file for non admin install

Windows app 

Mac OS X 10.7 Lion or newer

Linux 32 bits
Linux 64 bits
Linux ARM

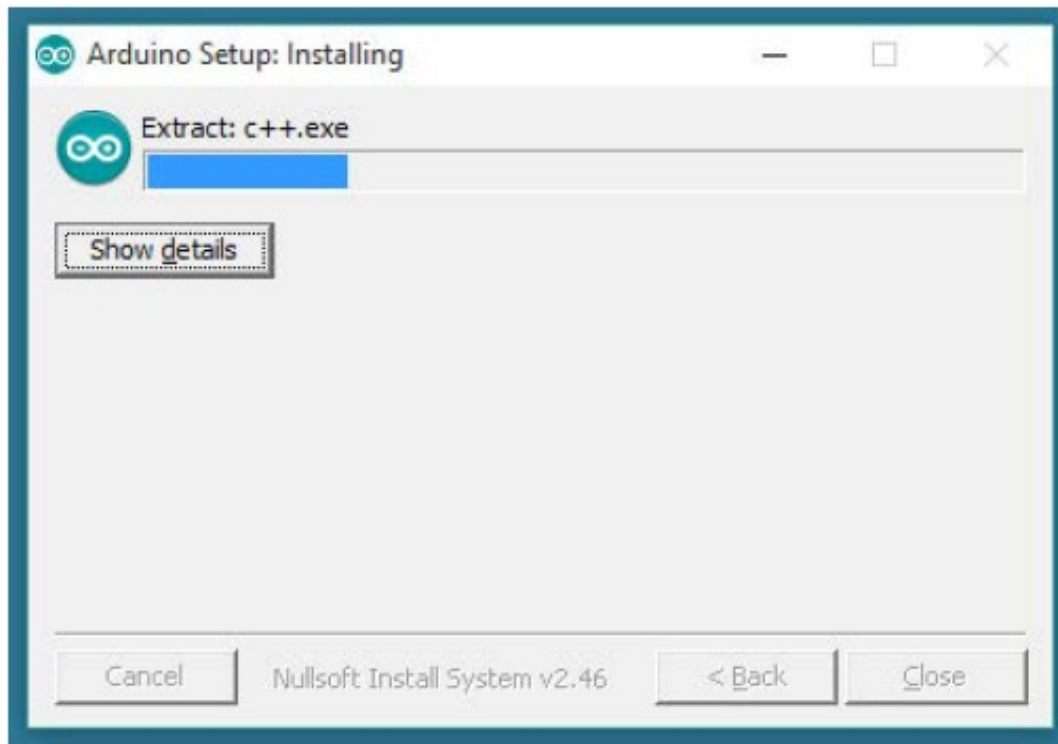
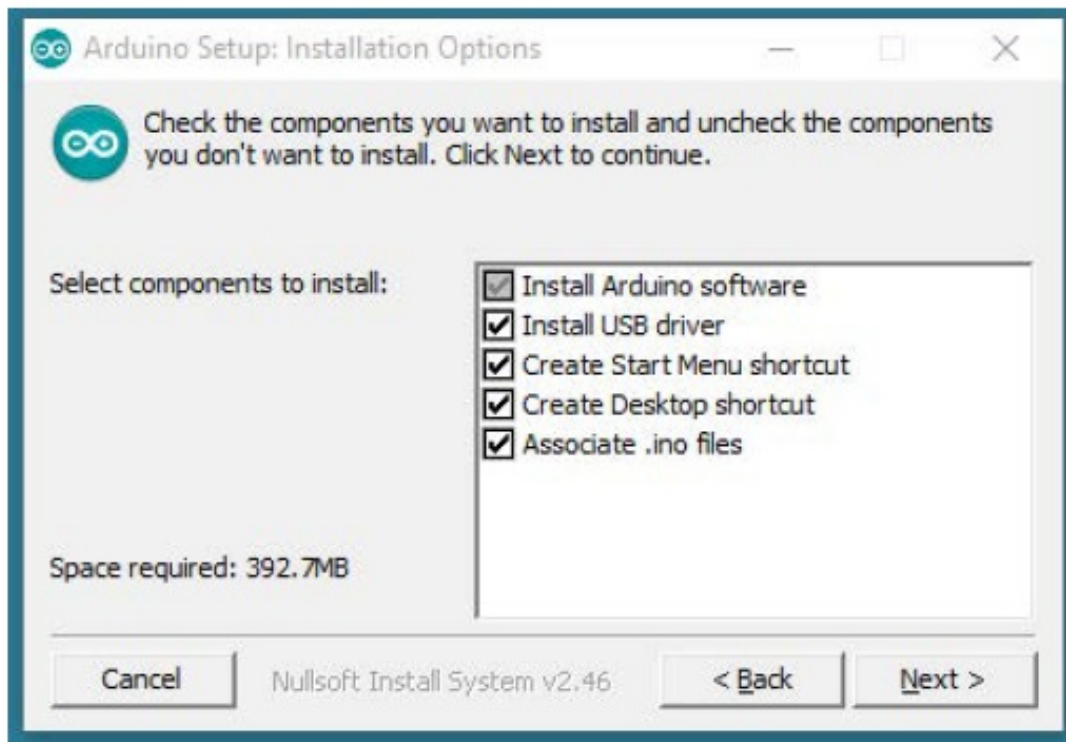
[Release Notes](#)
[Source Code](#)
[Checksums \(sha512\)](#)

Connect, Collaborate, Create. [Learn more about the Create platform.](#)

**Try out the new
Arduino Web Editor**

Enter the download interface, select **Windows installer** to install directly

Install the Arduino Software



Wait for installation

Configure

Download Git

Download the installation package Git.exe

git --distributed-even-if-your-workflow-isnt

Search entire site...

About
Documentation
Downloads
 GUI Clients
 Logos
Community

The entire **Pro Git** book written by Scott Chacon and Ben Straub is available to read online for free. Dead tree versions are available on Amazon.com.

Downloads

Older releases are available and the Git source repository is on GitHub.

Latest source Release
2.21.0
 Release Notes (2019-02-24)
 Download 2.21.0 for Windows

Mac OS X Windows
 Linux/Unix

GUI Clients

Git comes with built-in GUI tools (**git-gui**, **gitk**), but there are several third-party tools for users looking for a platform-specific experience.

[View GUI Clients →](#)

Logos

Various Git logos in PNG (bitmap) and EPS (vector) formats are available for use in online and print projects.

[View Logos →](#)

Git via Git

If you already have Git installed, you can get the latest development version via Git itself:

```
git clone https://github.com/git/git
```

You can also always browse the current contents of the git repository using the [web interface](#).

Pre-build configuration

Click Arduino icon, then right click and select "Open folder where "
 Select hardware ->
 Mouse ** Right click ** ->
 Click Git Bash Here

Cloning a remote repository

- mkdir espressif
- cd espressif
- git clone --recursive <https://github.com/espressif/arduino-esp32.git> esp32

Connect

You are almost there. To be able to proceed further, connect ESP32-S3 board to PC, check under what serial port the board is visible and verify if serial communication works.

1. Connect the USB

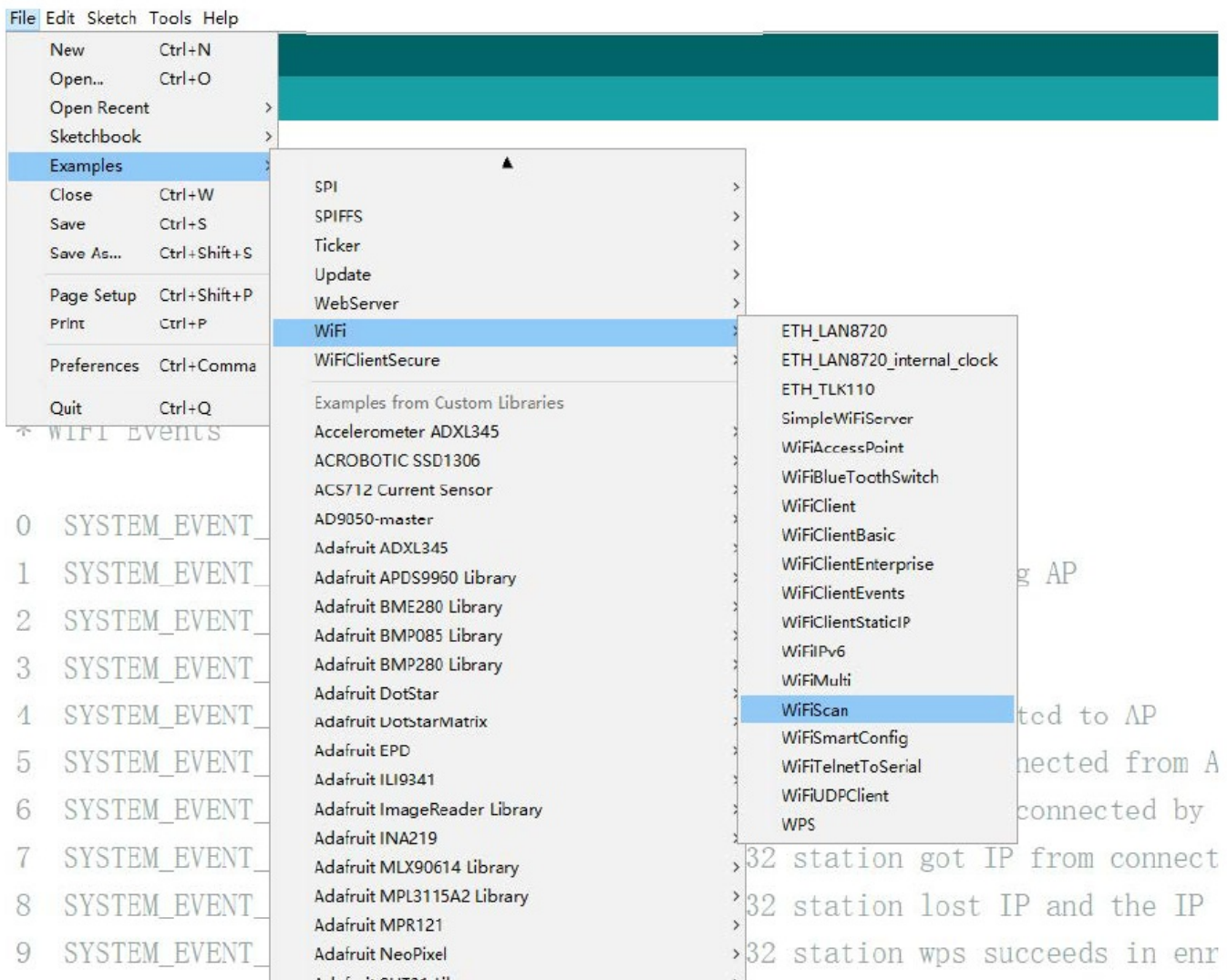


2. The screen displays “E-Label” for 5 seconds.



Test Demo

Select File>>Example>>WiFi>>WiFiScan



Serial Monitor
Tools ->Serial Monitor


```
COM4

| Send

scan start
scan done
2 networks found
1: MEO-620B4B (-39)*
2: MEO-WiFi (-39)

scan start
scan done
2 networks found
1: MEO-620B4B (-38)*
2: MEO-WiFi (-38)

Autoscroll Both NL & CR 115200 baud
```

SSC Command Reference

op

Description

op commands are used to set and query the Wi-Fi mode of the system.

Example

op -Q
op -S -o wmode

Parameter

Table 6-1. op Command Parameter

-Q	Query Wi-Fi mode.
-S	Set Wi-Fi mode.
wmode	There are 3 Wi-Fi modes: <ul style="list-style-type: none">mode = 1: STA modemode = 2: AP modemode = 3: STA+AP mode

sta

Description

sta commands are used to scan the STA network interface, connect or disconnect AP, and query the connecting status of STA network interface.

Example

- sta -S [-s ssid] [-b bssid] [-n channel] [-h]
- sta -Q
- sta -C [-s ssid] [-p password]
- sta -D

Parameter

Table 6-2. sta Command Parameter

-s ssid	Scan or connect Access Points with the ssid.
-b bssid	Scan the Access Points with the bssid.
-n channel	Scan the channel.
-h	Show scan results with hidden ssid Access Points.
-Q	Show STA connect status.
-D	Disconnected with current Access Points.

ap

Description

ap commands are used to set the parameter of AP network interface.

Example

ap -S [-s ssid] [-p password] [-t encrypt] [-n channel] [-h] [-m max_sta] ap -Q
ap -L

Table 6-3. ap Command Parameter

-S	Set AP mode.
-s ssid	Set AP ssid.
-p password	Set AP password.
-t encrypt	Set AP encrypt mode.
-h	Hide ssid.
-m max_sta	Set AP max connections.
-Q	Show AP parameters.
-L	Show MAC Address and IP Address of the connected station.

mac

Description

mac commands are used to query the MAC address of the network interface.

Example

-Q	Show MAC address.
-o mode	<ul style="list-style-type: none"> mode = 1: MAC address in STA mode. mode = 2: MAC address in AP mode.

dhcp

Description

dhcp commands are used to enable or disable dhcp server/client.

Example

- dhcp -S [-o mode]
- dhcp -E [-o mode]
- dhcp -Q [-o mode]

Table 6-5. dhcp Command Parameter

-S	Start DHCP (Client/Server).
-E	End DHCP (Client/Server).
-Q	show DHCP status.
-o mode	<ul style="list-style-type: none"> mode = 1 : DHCP client of STA interface. mode = 2 : DHCP server of AP interface. mode = 3 : both.

ip

Description

ip command are used to set and query the IP address of the network interface.

Example

ip -Q [-o mode] ip -S [-i ip] [-o mode] [-m mask] [-g gateway]

Table 6-6. ip Command Parameter

-Q	Show IP address.
-o mode	<ul style="list-style-type: none">• mode = 1 : IP address of interface STA.• mode = 2 : IP address of interface AP.• mode = 3 : both
-S	Set IP address.
-i ip	IP address.
-m mask	Subnet address mask.
-g gateway	Default gateway.

reboot

Description

reboot command is used to reboot the board.

Example reboot

ram

ram command is used to query the size of the remaining heap in the system.

Example ram

FCC Caution

Any Changes or modifications not expressly approved by the party responsible for compliance could void the user's authority to operate the equipment.
This device complies with part 15 of the FCC Rules. Operation is subject to the following two conditions: (1) This device may not cause harmful interference, and (2) this device must accept any interference received, including interference that may cause undesired operation.
This transmitter must not be co-located or operating in conjunction with any other antenna or transmitter.

IMPORTANT NOTE:

Note: This equipment has been tested and found to comply with the limits for a Class B digital device, pursuant to part 15 of the FCC Rules. These limits are designed to provide reasonable protection against harmful interference in a residential installation. This equipment generates, uses and can radiate radio frequency energy and, if not installed and used in accordance with the instructions, may cause harmful interference to radio communications.

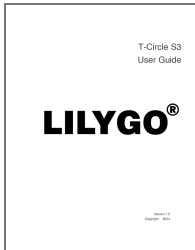
However, there is no guarantee that interference will not occur in a particular installation. If this equipment does cause harmful interference to radio or television reception, which can be determined by turning the equipment off and on, the user is encouraged to try to correct the interference by one or more of the following measures:

- Reorient or relocate the receiving antenna.
- Increase the separation between the equipment and receiver.
- Connect the equipment into an outlet on a circuit different from that to which the receiver is connected.
- Consult the dealer or an experienced radio/TV technician for help.

FCC Radiation Exposure Statement

This equipment complies with FCC radiation exposure limits set forth for an uncontrolled environment. This equipment should be installed and operated with minimum distance 20cm between the radiator& your body.

Documents / Resources

	LILYGO T-Circle S3 Speaker Microphone Wireless Module [pdf] User Guide T-CIRCLE-S3, 2ASYE-T-CIRCLE-S3, 2ASYETCIRCLES3, T-Circle S3 Speaker Microphone Wireless Module, T-Circle S3, Speaker Microphone Wireless Module, Microphone Wireless Module , Wireless Module, Module
---	---

References

- [arduino.cc/en/Guide/Linux](https://www.arduino.cc/en/Guide/Linux)
- [arduino.cc/en/Guide/MacOSX](https://www.arduino.cc/en/Guide/MacOSX)
- [arduino.cc/en/Guide/Windows](https://www.arduino.cc/en/Guide/Windows)
- [User Manual](#)

[Manuals+](#), [Privacy Policy](#)

This website is an independent publication and is neither affiliated with nor endorsed by any of the trademark owners. The "Bluetooth®" word mark and logos are registered trademarks owned by Bluetooth SIG, Inc. The "Wi-Fi®" word mark and logos are registered trademarks owned by the Wi-Fi Alliance. Any use of these marks on this website does not imply any affiliation with or endorsement.