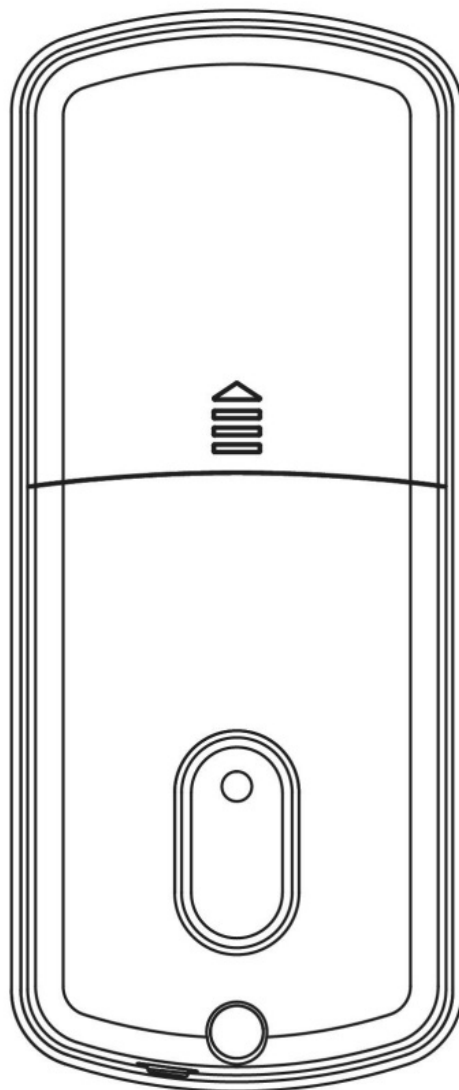
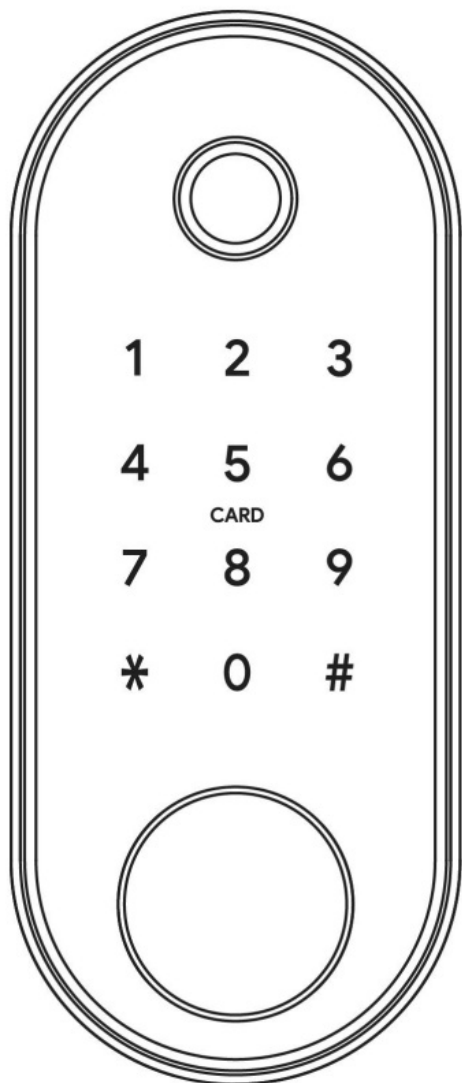


LILIWISE T5 Waterproof Smart Deadbolt Keypad Lock User Manual

[Home](#) » [LILIWISE](#) » LILIWISE T5 Waterproof Smart Deadbolt Keypad Lock User Manual 

LILIWISE T5 Waterproof Smart Deadbolt Keypad Lock



Special Attention:

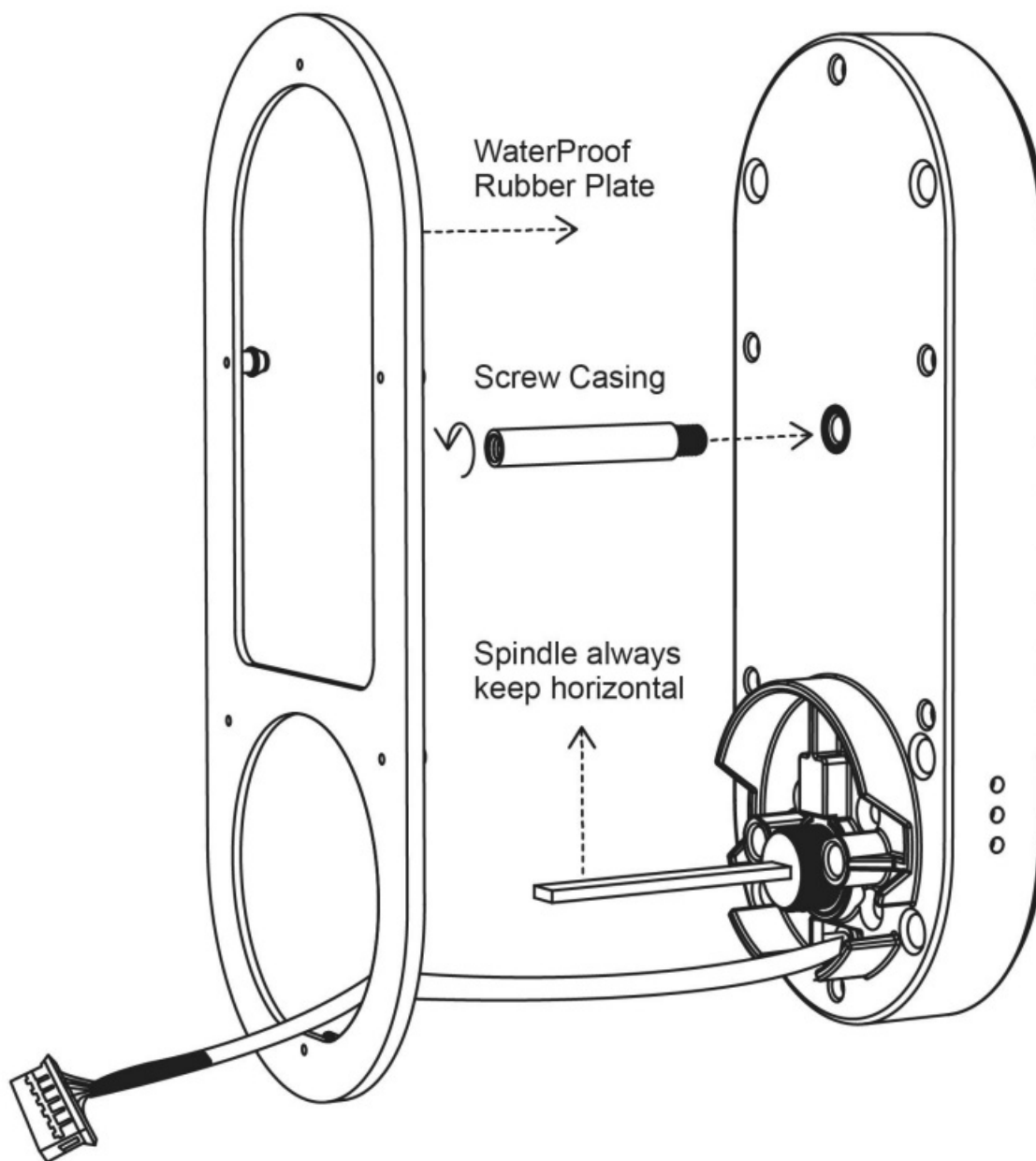
1. Mechanical keys please keep outdoor, just in case keys lock in doors.
2. Please replace for the battery when low wattage alarm.
3. Reading this manual carefully before installation, and keep

Contents

- 1 Introduction
 - 1.1 Lock structure
 - 1.2 Packing List
 - 1.3 Specifications
 - 1.4 Initialization
- 2 Installation
 - 2.1 Confirm opening direction
 - 2.2 Installation Diagram
- 3 Operation
 - 3.1 Registration
 - 3.2 Connect lock to the phone
 - 3.3 Add locks
 - 3.4 User Management
 - 3.5 Gateway management(Optional)
 - 3.6 Electronic Locking Button
- 4 Guarantee
- 5 Documents / Resources
- 6 Related Posts

Introduction

Lock structure



Packing List



Check the following drawing to check whether the package contains all the parts

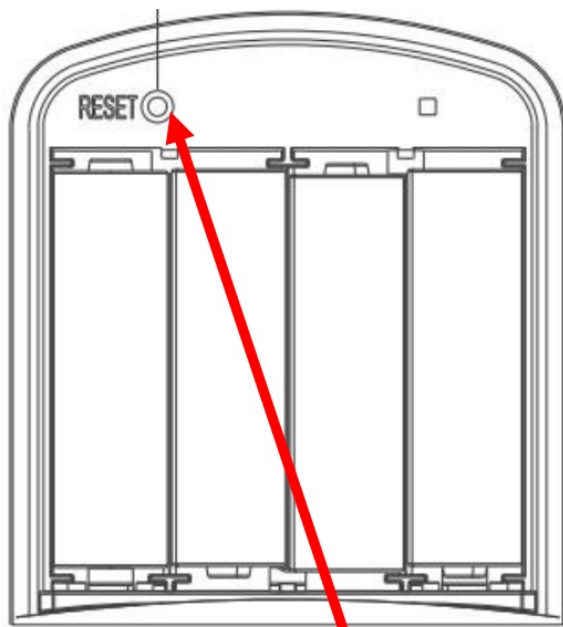
NO	Name	Qty		NO	Name	Qty
1	Front Pane	1		9	Screw Stubs:M4*40mm	3
2	Back Panel	1		10	Mortise Screws:M4*20mm (For Wooden Door)	4
3	Mortise	1		11	Mortise Screws:M5*10mm (For Aluminum Door)	4
4	Card	3		12	M4*10mm Screws For Fixing Back Panel	3+1
5	Mechanical Key	2		13	M4*30mm Screw	1
6	Waterproof Rubber Plate	2		14	M4*40mm Screw	1
7	User Manual	1		15	M6*55mm Screw	2
8	Strike&Strike Box	1&1		16	M6*65mm Screw	2

Specifications

Suitable for Models	T5-TB	Doors Applicable	Aluminum door Wooden door
Materials	Aluminum alloy	Working Voltage	6V/4x AA Batteries
Lock Weight	1.5KG	Door Thickness to Fit	35-55mm
Unlocking Way	Bluetooth	Data Capacity	Fingerprint 2 Password 1 Card 200
	Fingerprint(option)		
	Password		
	Card		
	Mechanical key		
Color	Silver Black	Working Temperature	-10°C-55°C
Low Wattage Alarm	Less than 4.8V	Working Humidity	0-95%

Initialization

Long press the reset button on the back of the front panel for about 3s,input "000#",the initialization is successful when the buzzer short beep twice.

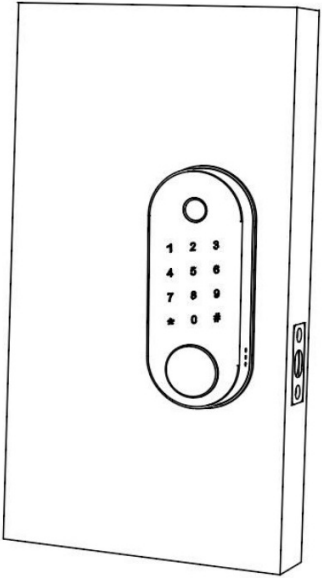
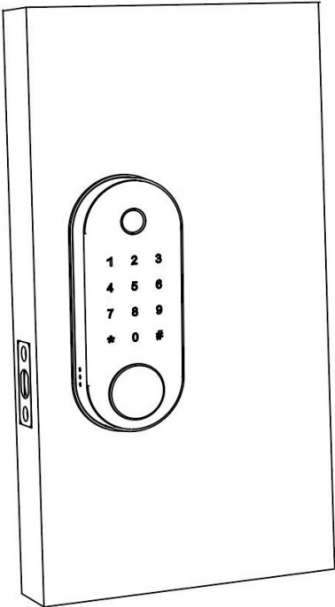
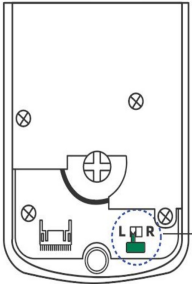
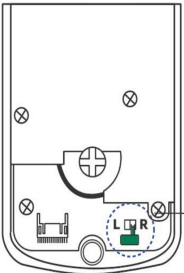
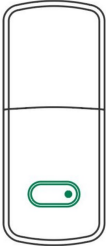
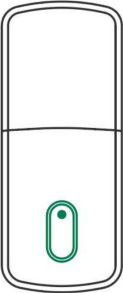


Reset Button

Installation

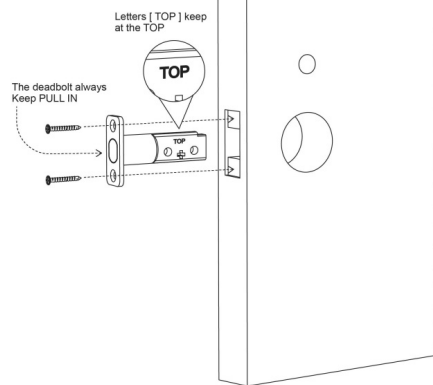
Confirm opening direction

Set The Left Open		Set The Right Open	
1			Spindle always keep horizontal

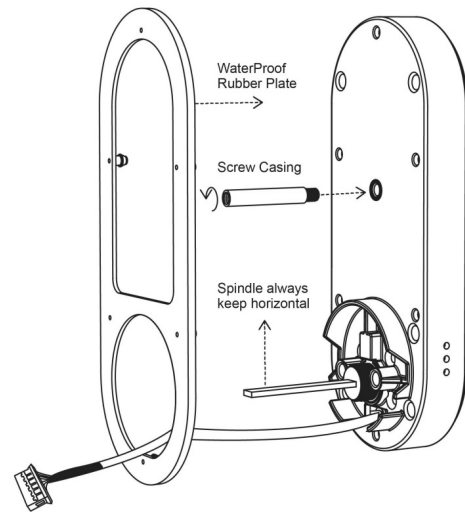
2			<p>What is left open? This we called “left open”(show as image)</p>
4	 <p>Left Open Set Switch</p>	 <p>Right Open Set Switch</p>	<p>Change to “L” or “R” position in the PCB of back panel</p>
5	 <p>Keep the knob always horizontal during installation.</p>	 <p>Keep the knob always vertical during installation.</p>	<p>Deadbolt knob</p>
<p>Attention Any of above is improperly set, the lock will not function</p>			

Installation Diagram

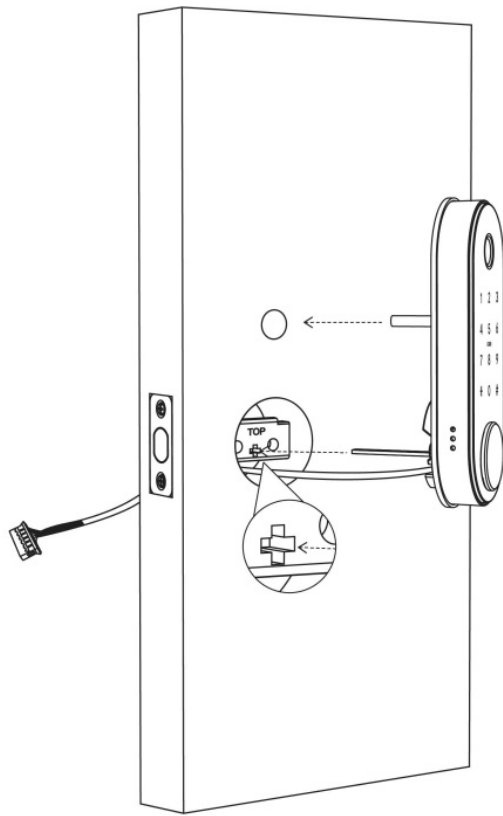
<p>Step1 Install Mortise</p>	<p>Step2 Install Screws Casing and Water Rubber Plate</p>
--	--



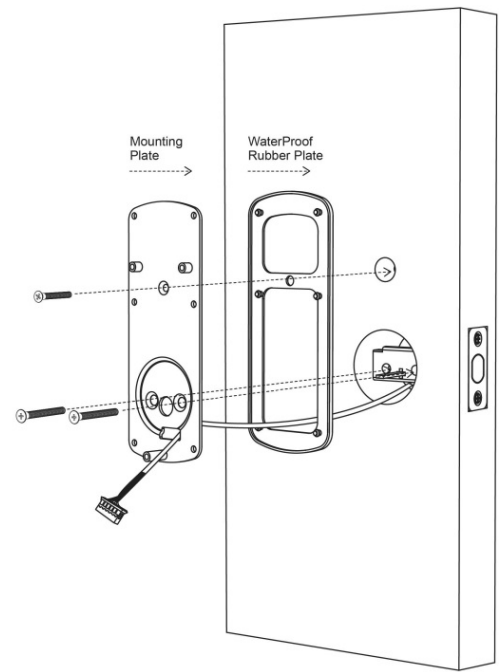
Step3 Install Front Panel



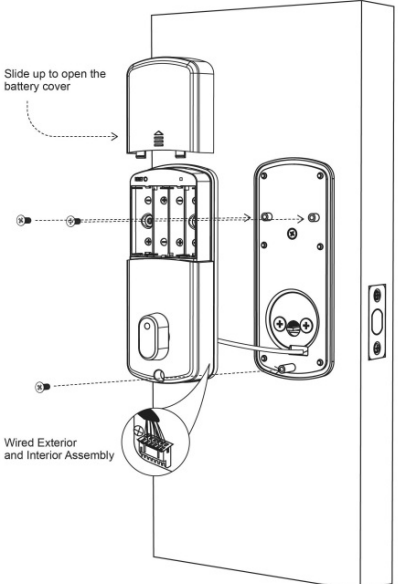
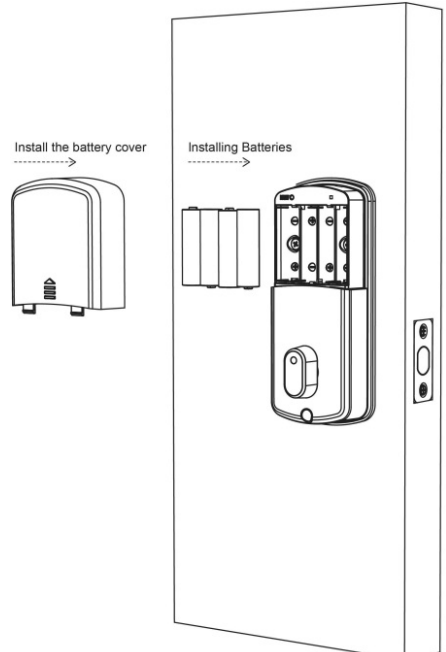
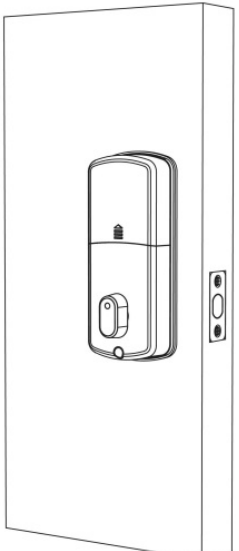
Step4 Fixed Front Panel and Water R Plate



Step5 Connecting Front and Back Panels




Step6 Install Batteries

	
Step7 Installation completed	
	

Operation

Registration

	<p>The software (iOS version) can be downloaded from the app store, and the Android version can be downloaded from the application store of Google play, Yingyongbao, Baidu, Ali, 360, Huawei, and Xiaomi.</p>
---	--

Connect lock to the phone

1. please scan the QR code to download the app

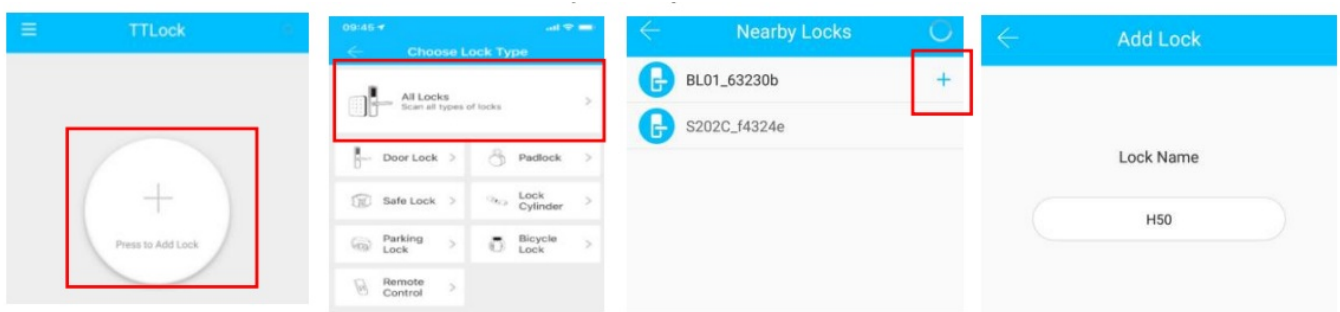
2. You can also search for TTLock in the APP store(Google Play)to download
3. Register a new account (phone number or email) or login with an existing account.
4. Touch the lock screen to light, click "+ Add Lock"
5. The lock nearby will appear on the phone screen, Click "+"
6. Re-name the lock
7. The lock added successfully

The image shows two side-by-side screenshots of the TTLock app interface. The left screenshot is the 'Register' screen, featuring a blue header with a back arrow and the title 'Register'. Below the header are two tabs: 'Phone' (selected) and 'Email'. The 'Phone' tab shows a form with fields for 'Country/Region' (set to 'American Samoa+1684'), 'Enter your Phone number', 'Password between 6-20 chars', and 'Confirm Password'. There is also a 'Verification Code' field and a 'Get Code' button. A large 'Register' button is at the bottom. The right screenshot is the 'Login' screen, featuring a blue header with the title 'Login' and a 'Register' link. Below the header is a blue hand icon with a key. The form includes fields for a phone number (18520265893) and a password (masked with dots). A 'Login' button is at the bottom, and a 'Forgot Password?' link is below it.

TTLock users can register the account by mobile phone and Email which currently support 200 countries and regions on the world. The verification code will be sent to user's mobile phone or email, and the registration will be successful after the verification.

Add locks

TTLock supports multiple types of lock devices. The lock needs to be added by the app after entering the add mode. Generally, a lock that has not been added, as long as the lock keyboard is touched, it will enter the add mode. The default password is 123456 if not added by the phone



User Management

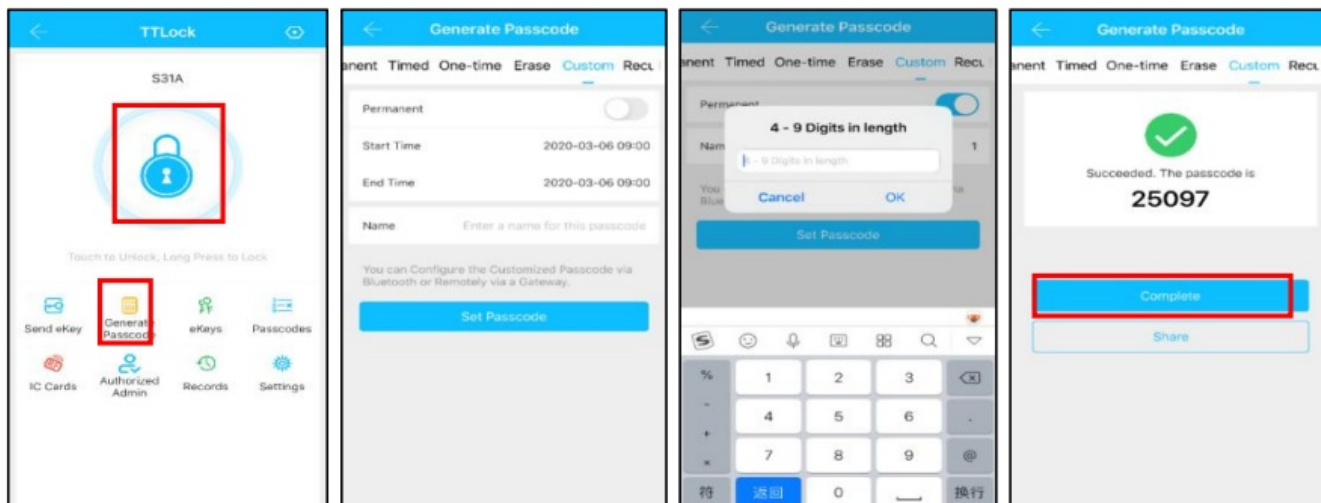
Bluetooth management

Make sure there is no problem with Bluetooth communication. After connecting the phone to the door lock as

above, Click "  "to unlock.(the phone is within 5 meters from the door lock)

Setting Passcode

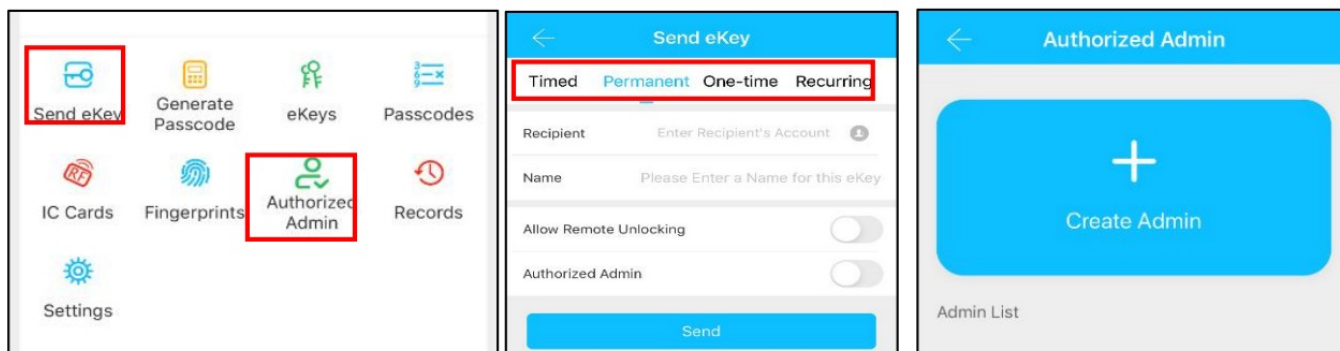
Passcodes are also a way to unlock. After entering the passcode on the locked keyboard, press the unlock button in the lower right corner to unlock. Passcodes are divided into permanent, time-limited, single, clear, cycle, and custom.(You can share the Pass code to other user via WeChat SMS Email Messenger WhatsApp)



Send e-Key

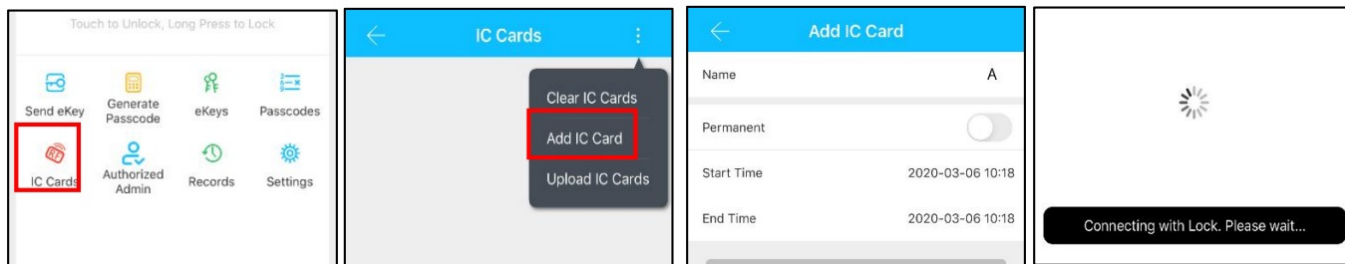


Click on the " Send eKey " as shown in figure, you can send the eKey to other users of TTLock to authorize the unlock(the receiver must be download the APP and set up an account)→ Select e-key format (Timed, permanent, One-time, Recurring) →Enter recipient's account of TTLock, set the name and effective time of the eKey, Can choose to allow remote unlocking or disallowing, authorized administrator or not authorized, as shown in figure →Send→The recipient's account has Bluetooth unlock permission



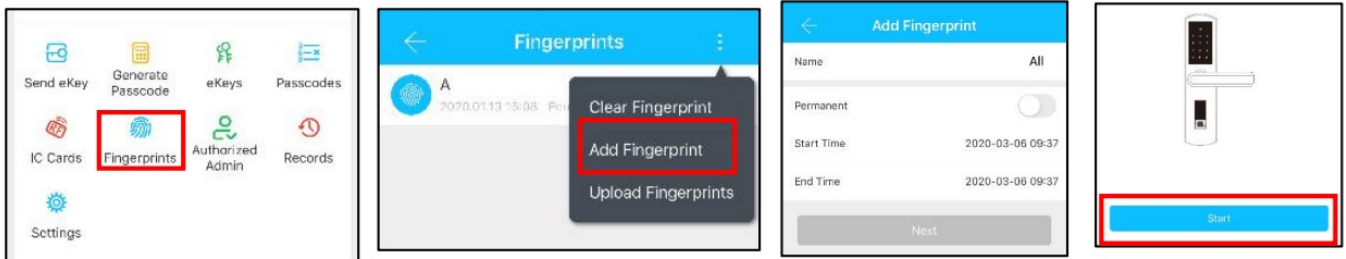
Add card

Supports opening doors through various IC cards. Before an IC card is used too pen the door, it needs to be added first. The adding process needs to be performed by the app beside the lock. The validity period of the IC can be set, it can be permanent, or it can be limited in time



Add fingerprint

The premise that a fingerprint can be used to open a door is that it needs to be added first. The adding process needs to be performed by the APP beside the lock. The fingerprint expiration data can be set, it can be permanent, or it can be limited. After setting ,you can modify its validity period.



e-Key management



Click “eKeys” The manager can delete ekey, reset ekey, send and adjust the key, meanwhile he can search the lock record.

Passcode management

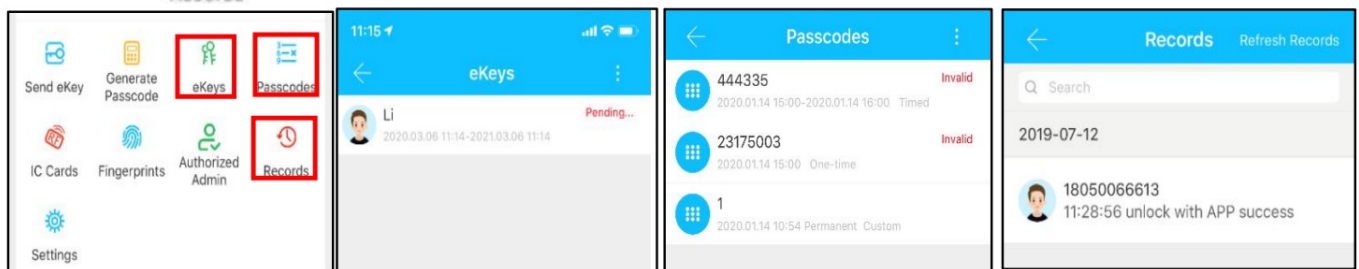


Click “Passcodes” .All generated passwords can be viewed and managed in the password management module. This includes a password change, password deletion, password reset, and password unlock record.

Unlock records



Click “Passcodes” “you can query your unlock record as shown in figure

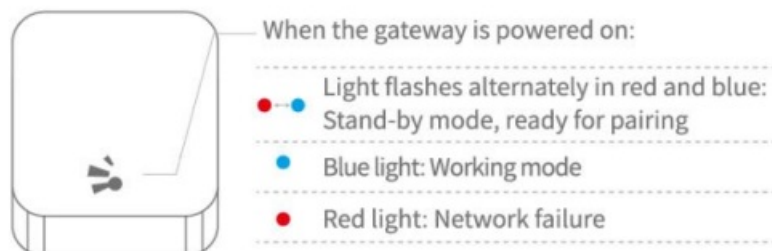


Gateway management(Optional)

The TT lock is directly connected via Bluetooth, that is why it is not attacked by the network. The gateway is a bridge between smart locks and home WIFI networks. Through the gateway, the user can remotely view and calibrate the lock clock, read the unlock record. Meanwhile, it can remotely delete and modify the password.

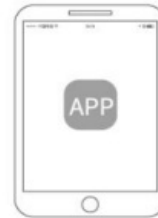
Add Gateway

Light status



Pair the Gateway with App

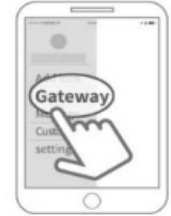
1 Activate the APP



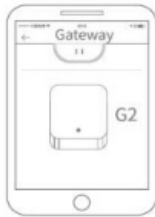
2 Press "≡"



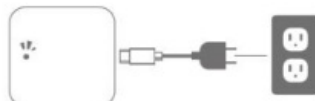
3 Select [Gateway]



4 Select [G2]



5 Plug in the gateway and power it on, while the light flashes alternately in red and blue



7 Add Gateway



8 Select the network and fill in the password

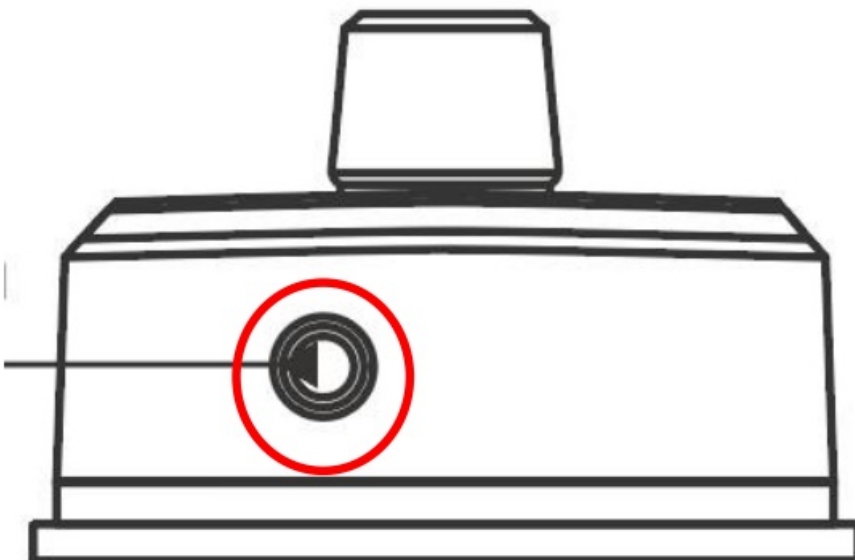


6 Press "+" sign



9 Add complete

Electronic Locking Button



1. If you want to have the Electronic Locking function, first turn on “privacy lock” on the app
2. When the button is in the red state, it is in the locked state and can only be unlocked through the administrative app or mechanical key.

1) How to read operation records?	In the Records of the main interface. .
2) Why can't I unlock it after open the passage mode	You need to perform an unlock verification in any method, then the passage mode will take effect.
3) What is the purpose of Auto Lock	You can set how long to lock after unlocking
4 After installation, touch sensing keyboard, screen no respond	<p>a) In this case, first check that the positive and negative electrodes of the battery have been installed upside down, whether the battery has enough power</p> <p>b) Remove the back panel and see if it's connected.</p> <p>c) To eliminate the above situation, you need to remove the lock, check whether the wires of the lock body are squeezed, and the re-wire.</p>
5 Unable to register fingerprint	Check the fingers for dirt or wear, check the fingerprint head on the lock for dirt and oil stains, etc. Check to see if the fingerprint is working properly(Press to see if there is any response).
6 What is the reason why the smart lock consumes fast power?	<p>a) Large standby power consumption</p> <p>b) Short circuit</p>
7 There is no response to pressing the handle on the outside of the door, and there is unlock normally on the inside of the door, but the verification is normal, and the motor is normal.	It may be the triangle direction on the clutch was error, please check correction.
8 How many times will the password be locked? How long is it locked?	Enter the wrong password more than 5 times in a row, the keyboard is locked for 5 minutes, Other ways to can open the door

Guarantee

Customer Name
Customer Calls
Purchase Date
Product Name
Product Model

Note:

1. Please keep this card so that you can use it when you need warranty service.
2. We provide you with a one-year warranty from the date of purchase.
3. This warranty service is valid for customers in any

FCC WARNING This device complies with part 15 of the FCC Rules. Operation is subject to the following two conditions: (1) this device may not cause harmful interference, and (2) this device must accept any interference received, including interference that may cause undesired operation. Any changes or modifications not expressly approved by the party responsible for compliance could void the user’s authority to operate the equipment. NOTE: This equipment has been tested and found to comply with the limits for a Class B digital device, pursuant to Part 15 of the FCC Rules. These limits are designed to provide reasonable protection against harmful interference in a residential installation. This equipment generates, uses and can radiate radio frequency energy and, if not installed and used in accordance with the instructions, may cause harmful interference to radio communications. However, there is no guarantee that interference will not occur in a particular installation. If this equipment does cause harmful interference to radio or television reception, which can be determined by turning the equipment off and on, the user is encouraged to try to correct the interference by one or more of the following measures:

- Reorient or relocate the receiving antenna.
- Increase the separation between the equipment and receiver.
- Connect the equipment into an outlet on a circuit different from that to which the receiver is connected.
- Consult the dealer or an experienced radio/TV technician for help.

To maintain compliance with FCC’s RF Exposure guidelines, This equipment should be installed and operated with minimum 20cm distance between the radiator and your body:
Use only the supplied antenna

Documents / Resources

	LILIWISE T5 Waterproof Smart Deadbolt Keypad Lock [pdf] User Manual T5, Waterproof Smart Deadbolt Keypad Lock, Smart Deadbolt Keypad Lock, Deadbolt Keypad Lock, T5, Keypad Lock, Lock
--	---