



Lightspeed QS0592US01-7 Topcat Instructional Audio System User Guide

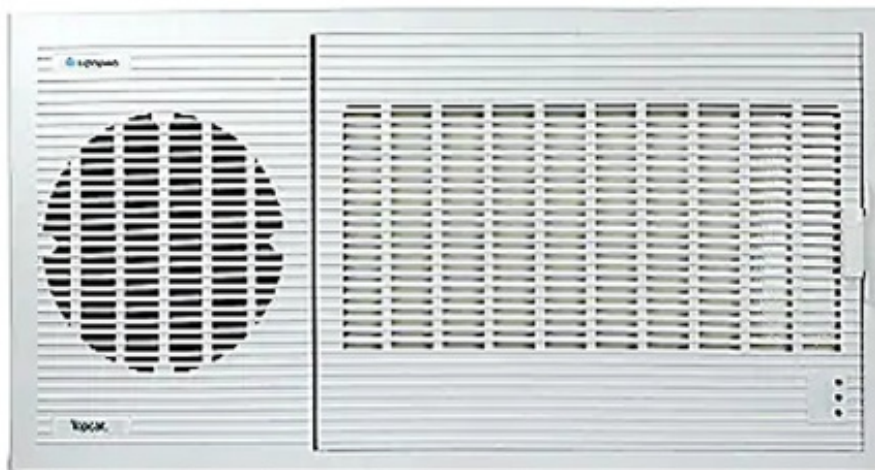
[Home](#) » [lightspeed](#) » Lightspeed QS0592US01-7 Topcat Instructional Audio System User Guide 

Contents

- [1 Lightspeed QS0592US01-7 Topcat Instructional Audio System](#)
- [2 CONNECT POWER TO THE 975](#)
- [3 USING THE FLEXMIKE](#)
- [4 Documents / Resources](#)
 - [4.1 References](#)
- [5 Related Posts](#)

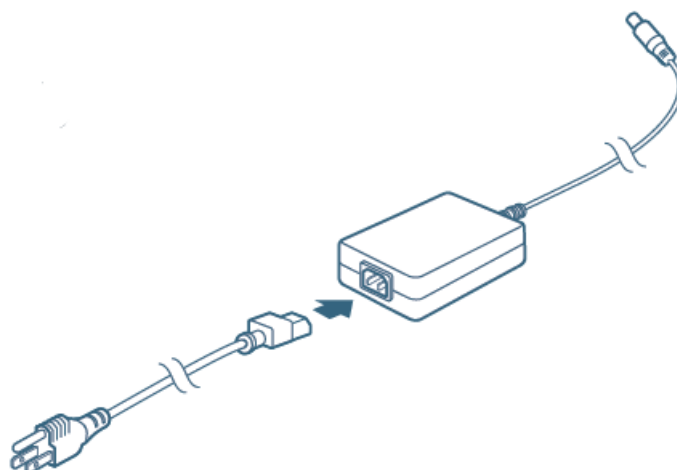


Lightspeed QS0592US01-7 Topcat Instructional Audio System

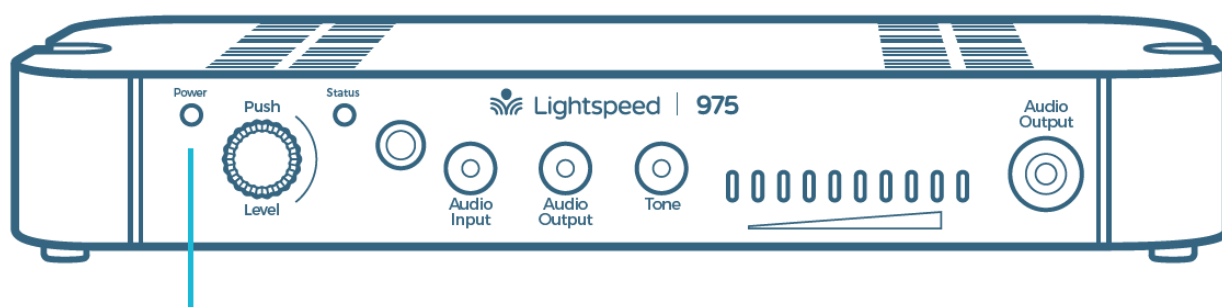


CONNECT POWER TO THE 975

Connect the power supply to the 975 and plug the cord into an AC outlet.

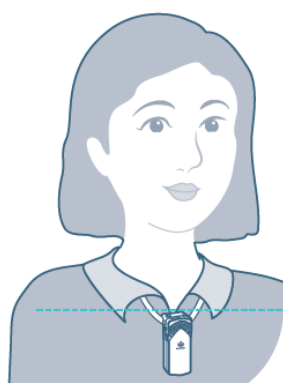


The 975 will power on and the power light will glow.



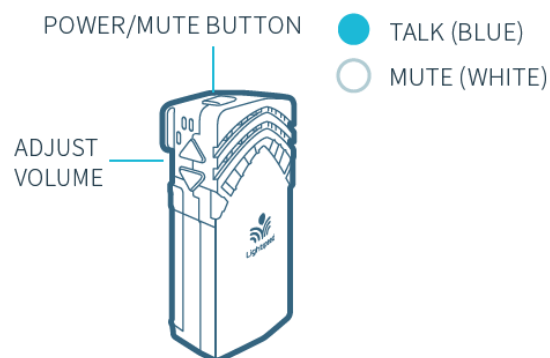
POWER LIGHT

USING THE FLEXMIKE

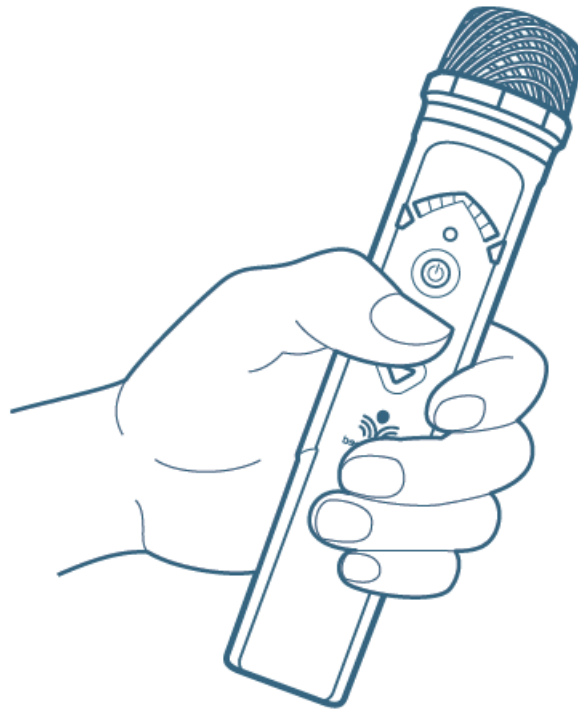


Remove microphone from charger. Press the mute button to unmute, hold near your mouth and begin speaking.

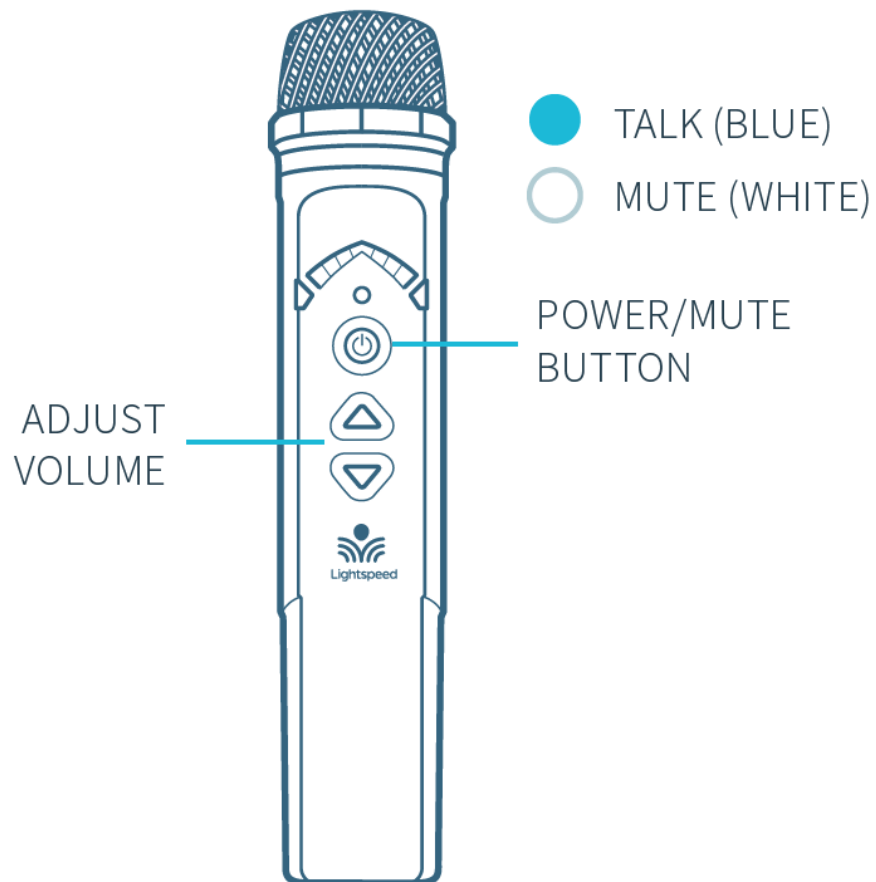
ALIGN WITH
COLLARBONE



USING THE SHAREMIKE

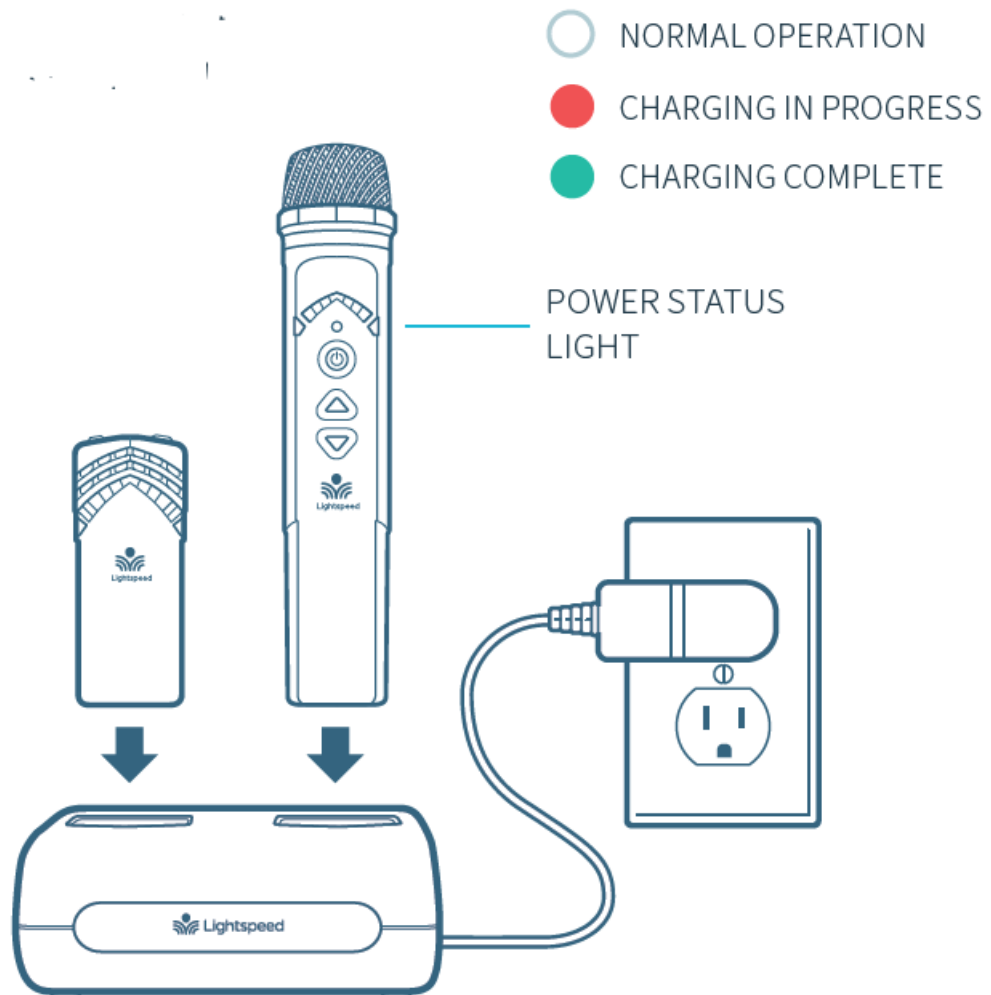


Remove microphone from charger and press the mute button to begin speaking.



CHARGE MICROPHONES NIGHTLY

Place the microphones into the cradle charger. The power status light will glow red when it is charging. It takes about 5-6 hours to fully charge the microphone battery. When charging is complete, the power status light will glow green.

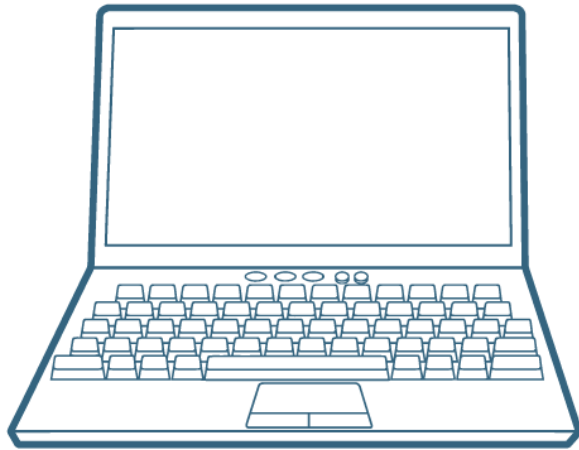


USING A WIRELESS AUDIO LINK

You can connect your 2nd (or 3rd) microphone to your computer's USB port to enable a wireless 2-way audio link.

SEND AUDIO FROM THE COMPUTER to the 975 to ensure all audio from the computer (videos, video conferencing, audiobooks, music, etc) can be played through the Lightspeed 975 system and speakers.

SEND AUDIO TO THE COMPUTER from the 975 to ensure the teacher's Flexmike and any student microphones are clearly picked up by a video conferencing solution.



Connect the microphone to your computer using a USB-C cable. Open your computer sound settings to select FlexmikeAudio as the microphone and speaker.



USB cable sold separately. Lightspeed offers a USB-A to USB-C cable for sale (part #USBC)

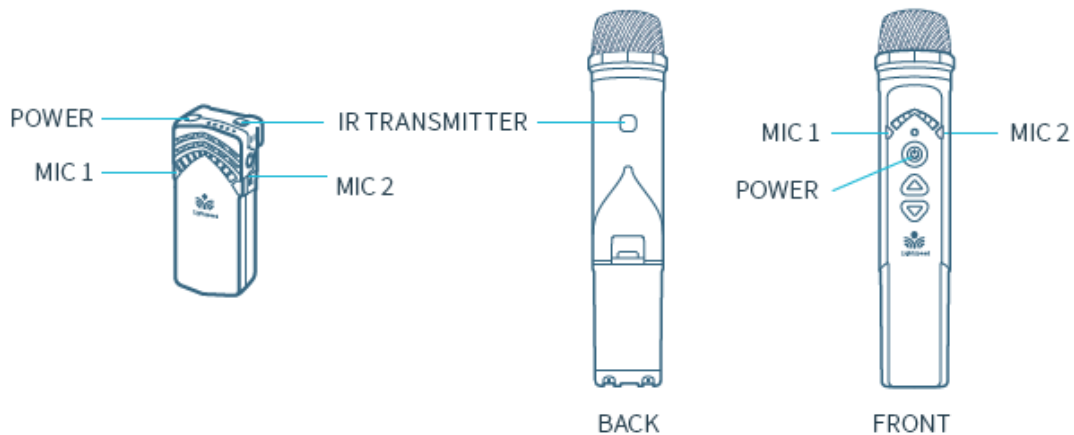
PAIRING MICROPHONES TO THE 975

Your system is shipped with microphones and base units pre-paired for quick and easy use. If you ever need to pair new components, follow this pairing process:

PLEASE NOTE: Microphones should be out of the charger while pairing.

1. POINT MICROPHONES AT 975

From a powered off state, point the IR transmitter lens toward the base unit (for Sharemike, the transmitter lens is located on the back of the microphone).

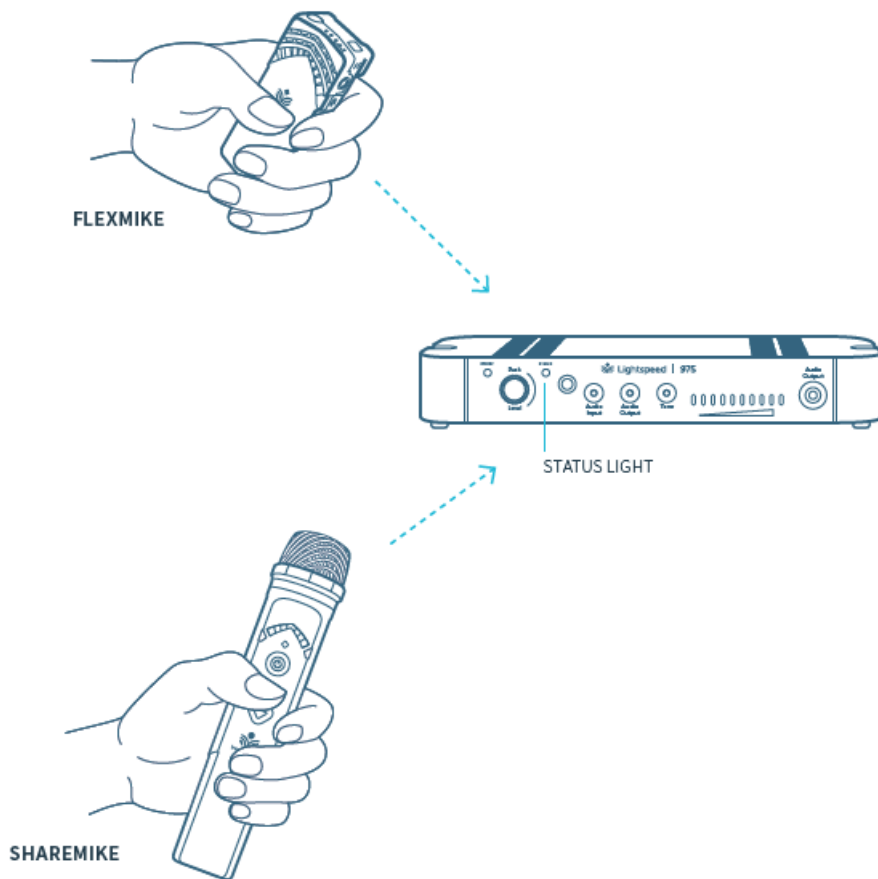


2. PRESS AND HOLD POWER BUTTON

Press and hold the power button for 5 seconds until the Mic 1 and Mic 2 lights start flashing, then release the button and let the pairing process finish.

3. CONFIRM STATUS

The status light on the 975 will light up indicating the pairing process is complete. The Mic 1 or Mic 2 light on the microphone will stay illuminated.



If the microphone is out of range, it will automatically shut off after 30 minutes of trying to reconnect. Once you are back in the classroom, or in range, simply press and hold the power button on the microphone to power it up.

INSTALLATION GUIDE

For installation instructions, go to www.lightspeed-tek.com/support/975-installation-guide/ (or scan the QR code).

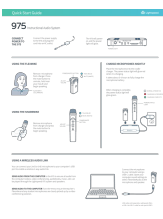


USER MANUAL

For complete operating instructions, go to www.lightspeed-tek.com/975-usermanual (or scan the QR code).



Documents / Resources

| | |
|---|---|
|  | <p>Lightspeed QS0592US01-7 Topcat Instructional Audio System [pdf] User Guide QS0592US01-7 Topcat Instructional Audio System, QS0592US01-7, Topcat Instructional Audio System, Instructional Audio System, Audio System</p> |
|---|---|

References

- [📶 975 User Manual | Lightspeed Instructional Audio Solutions](#)
- [📶 975 Installation Guide | Lightspeed Instructional Audio Solutions](#)