




[Home](#) » [LIGHTSHARE](#) » **LIGHTSHARE ZLS5FT 5-Foot Lighted Palm Tree Instruction Manual** 

Contents [[hide](#)]

- [1 LIGHTSHARE ZLS5FT 5-Foot Lighted Palm Tree](#)
- [2 INTRODUCTION](#)
- [3 INSTALLATION](#)
- [4 IMPORTANT SAFETY INSTRUCTIONS](#)
- [5 TROUBLESHOOTING](#)
- [6 WARRANTY](#)
- [7 FREQUENTLY ASKED QUESTIONS](#)
- [8 VIDEO – PRODUCT OVERVIEW](#)
- [9 References](#)



LIGHTSHARE ZLS5FT 5-Foot Lighted Palm Tree



INTRODUCTION

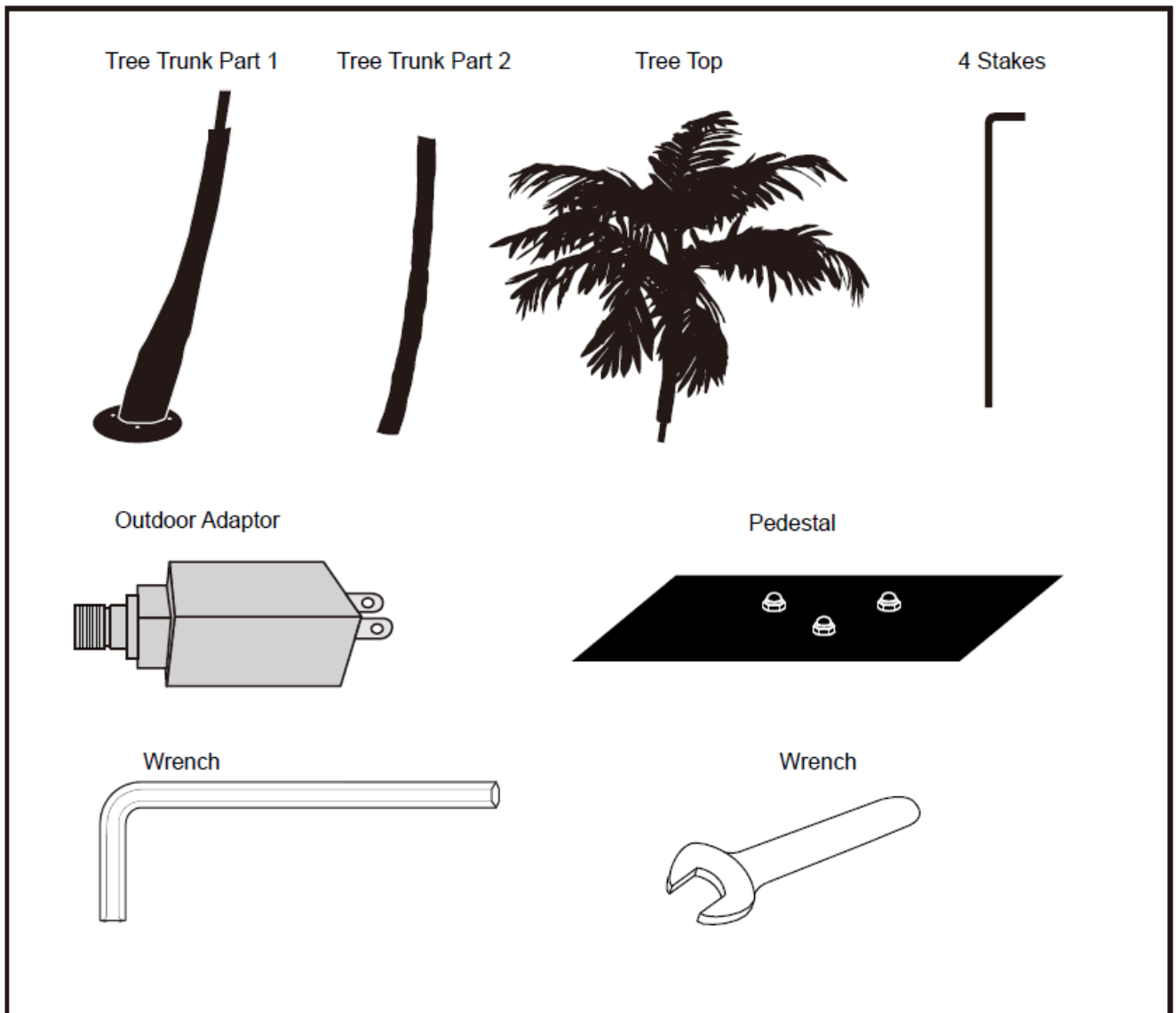
Bring a touch of paradise to your indoor space, party, or patio with the LIGHTSHARE 5FT Lighted Palm Tree . This compact and colourful artificial palm tree is a stylish décor solution for receptions, backyard gatherings, or holiday fun, and is designed to deliver tropical vibes all year round. The LIGHTSHARE brand, which is renowned for its high-quality illuminated decorations, is the manufacturer of this vibrant 5-foot model. It is priced at approximately **\$89.99** and boasts an iron construction for stability, as well as lifelike fabric leaves that resemble real palm vegetation. The dual-lighting design provides a dazzling radiance with 56 green LED lights beneath the leaves and 40 mini copper string lights encircling the trunk, evoking a vibrant warmth in any setting. It is equipped with four ground supports for outdoor stability, a 16-foot power cord, and a 24V

UL-certified adapter. This low-maintenance, Hawaiian-inspired beauty is suitable for all seasons and can be used to illuminate your garden, porch, or celebration.

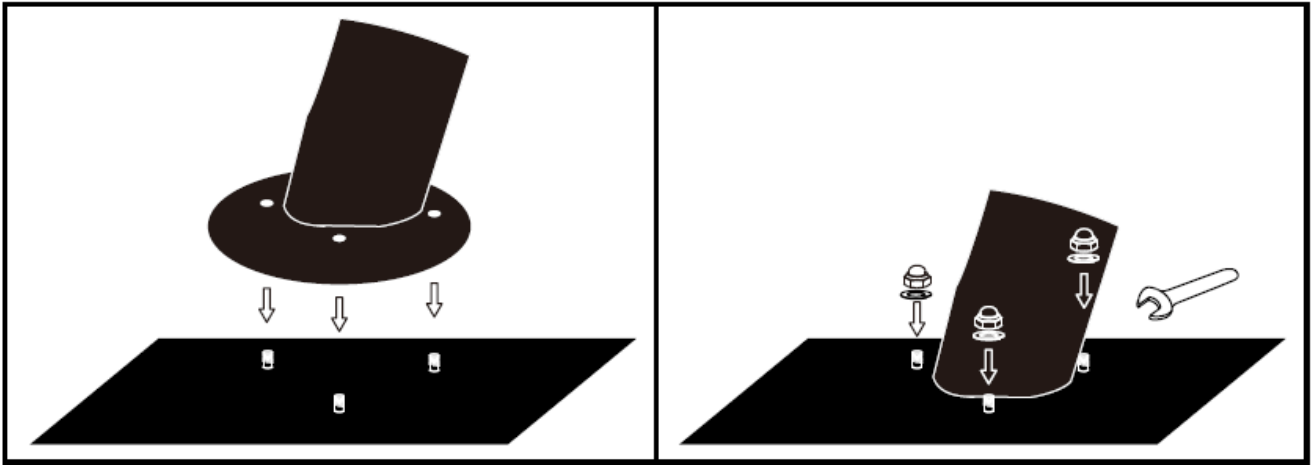
INSTALLATION

Directions for installation:

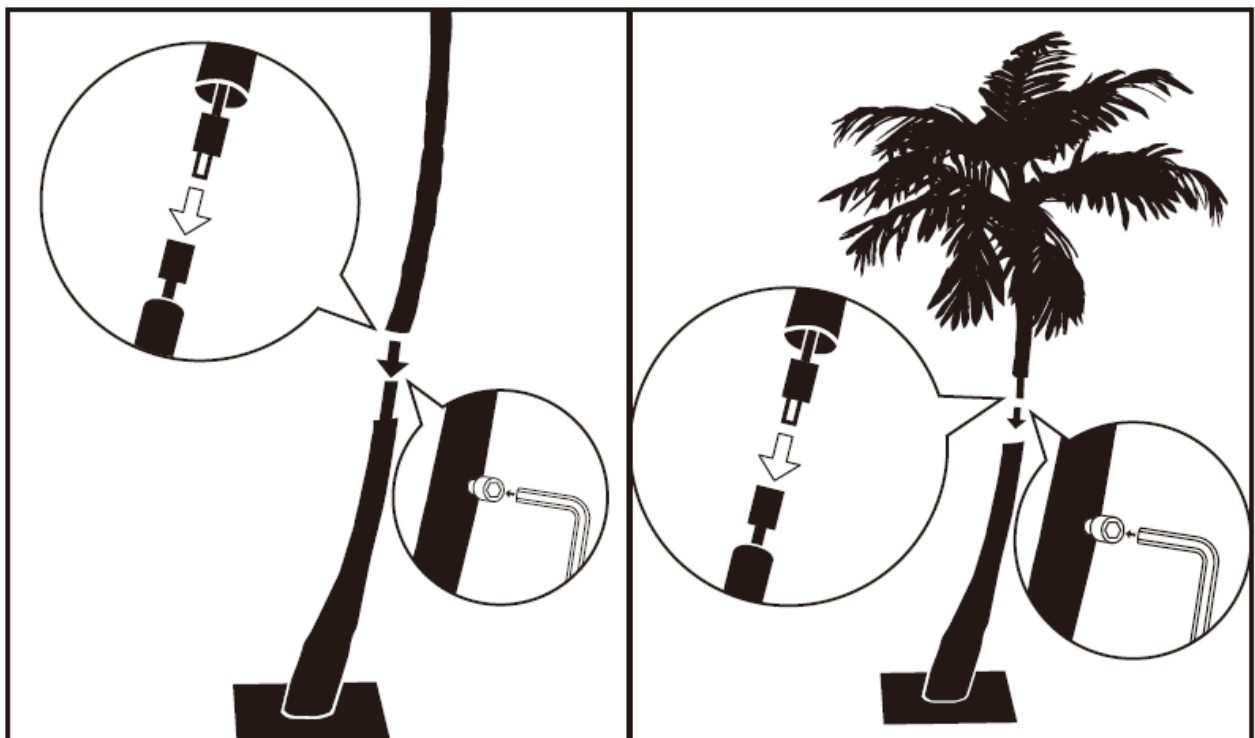
1. Carefully remove the product from the package



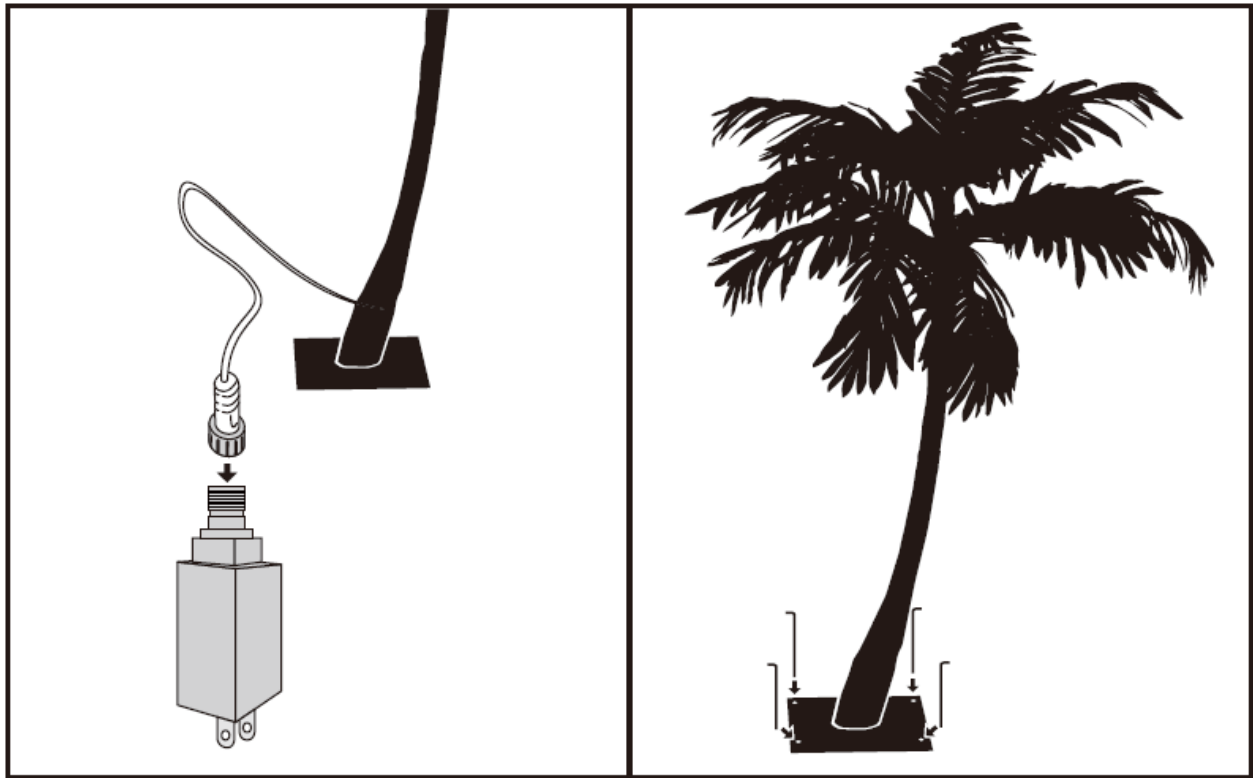
2. Adjust the trunk to fit the nuts on the base and fix it with screws by wrench included.



3. Find the wire joints inside the upper & bottom trunks. Connect up the joints, insert the upper trunk into the bottom one and fix the trunk with the screw preinstalled by Allen wrench.



4. Connect the power adapter and then plug in the outlet. Fix the base by ground stakes.



- Do not forget to wrap the trunk string light around the trunk to add a warm ambience!

The tree can be shaped by bending and arranging the branches into the desired position to give it a natural appearance!

- **Power supply:** 12V adaptor, IP44 rainproof
- **Input:** 120V AC 50/60Hz
- **Output:** 24V DC 6 W

IMPORTANT SAFETY INSTRUCTIONS

When in use outdoors, install only to a covered GFCI electrical outlet that is weatherproof. Make sure the outdoor adaptor and cord are assembled correctly and secured tightly to prevent water from entering the device

1. Please read and follow all instructions and warnings on both the instructions and the product carefully before use.
2. Retain these instructions for future reference.
3. This product is to be used only as intended its use.
4. For indoor/ outdoor use.
5. If used outdoors, connect the product to a Ground Fault Circuit Interrupter (GFCI)

receptacle.

6. Do not mount or place near gas or electric heaters, fireplaces, candles or other similar sources of heat
7. Do not secure the wiring of this product with staples or nails, or place on sharp hooks, nails or in a manner that can cut or damage the wire or insulation.
8. This is an electric product and not a toy! To avoid risk of fire, burns, personal injury and electric shock it should not be played with or placed where small children can reach it.
9. Do not close doors or windows on the product or extension cords, as this may damage the wire and insulation.

TROUBLESHOOTING

If the whole tree doesn't light up.

- Firstly, please check if the components have been connected normally. Then please check whether the adaptor works well, including the plug cord has been connected properly to the adaptor in right position of male and female connections.

If one or more of the branches don't light up.

- Please check each bulb on the unlighted branch has been well welded by touching slightly, or bending the branch slightly, if it doesn't work please follow step 3.

Any problem not mentioned above or unsolved

- Please contact us for assistance.

WARRANTY

Lightshare guarantees that this product is free of defects in material and workmanship, and provides a one-year limited hardware warranty for the product commencing from the date of purchase. Please keep your receipt for proof of purchase. This product is designed for light or decoration usage only. Using this device in any other capacity voids the warranty. The warranty offered covers normal use. Defect or damage that results from improper operation, storage, misuse or abuse, accident or neglect, which are not

the fault of Lightshare, are excluded from warranty coverage.

FREQUENTLY ASKED QUESTIONS

How many times can each branch be bent?

Please do not bend each branch more than 5 times, as high-frequency bending will lose the connection between branches and also affect the appearance. If there is a loose, you are advised to bind it with an electrical tape in a similar colour to the branches.

If one of the lights doesn't work, will it affect the run of the others?

The others will not be affected and could work normally.

Is the power supply safe for running ?

The voltage output of the power adapter is 12V. This product runs steadily and safely under the correct voltage.

How stable is the LIGHTSHARE ZLS5FT Palm Tree during windy conditions?

Its iron base, metal trunk, and included ground stakes provide reliable stability even in breezy environments.

How heavy is the LIGHTSHARE ZLS5FT Lighted Palm Tree?

The LIGHTSHARE ZLS5FT weighs approximately 9 pounds, making it easy to move yet stable enough to withstand outdoor placement.

What should I do if some of the LED lights on my LIGHTSHARE ZLS5FT Palm Tree stop working?

Ensure all wire connections are tight and check for any damaged wires. If LEDs remain out, consult the included manual or contact LIGHTSHARE support for replacement options.

Why is my LIGHTSHARE ZLS5FT not lighting up at all?

Confirm that the UL-certified adapter is securely connected, the power source is functioning, and the lead wire isnt damaged.

VIDEO – PRODUCT OVERVIEW

DOWNLOAD THE PDF LINK: [LIGHTSHARE ZLS5FT 5-Foot Lighted Palm Tree Instruction Manual](#)

References

- [User Manual](#)

■ LIGHTSHARE

◆ 5-Foot Lighted Palm Tree, B01E082CN0, Instruction Manual, LIGHTSHARE, LIGHTSHARE ZLS5FT, ZLS5FT

Leave a comment

Your email address will not be published. Required fields are marked *

Comment *

Name

Email

Website

☐ Save my name, email, and website in this browser for the next time I comment.

Post Comment

Search:

e.g. whirlpool wrf535swhz

Search

[Manuals+](#) | [Upload](#) | [Deep Search](#) | [Privacy Policy](#) | [@manuals.plus](#) | [YouTube](#)

This website is an independent publication and is neither affiliated with nor endorsed by any of the trademark owners. The "Bluetooth®" word mark and logos are registered trademarks owned by Bluetooth SIG, Inc. The "Wi-Fi®" word mark and logos are registered trademarks owned by the Wi-Fi Alliance. Any use of these marks on this website does not imply any affiliation with or endorsement.