




LIGHTPRO 227A Motion Sensor User Manual

[Home](#) » [LiGHTPRO](#) » LIGHTPRO 227A Motion Sensor User Manual 

LiGHTPRO
PROFESSIONAL OUTDOOR LIGHTING
Motion Sensor
227A



12 VOLT
User manual

Contents

- 1 227A Motion Sensor
- 2 PRODUCT DESCRIPTION
- 3 SPECIFICATIONS MOTION SENSOR
- 4 CONTENT OF THE PACKAGING
- 5 ZIGBEE
- 6 PAIRING MOTION SENSOR
- 7 INSTALLATION OF THE LIGHTS
- 8 SAFETY
- 9 Documents / Resources
 - 9.1 References
- 10 Related Posts

227A Motion Sensor

SMART

Start immediately:

1. Download the app



Available on

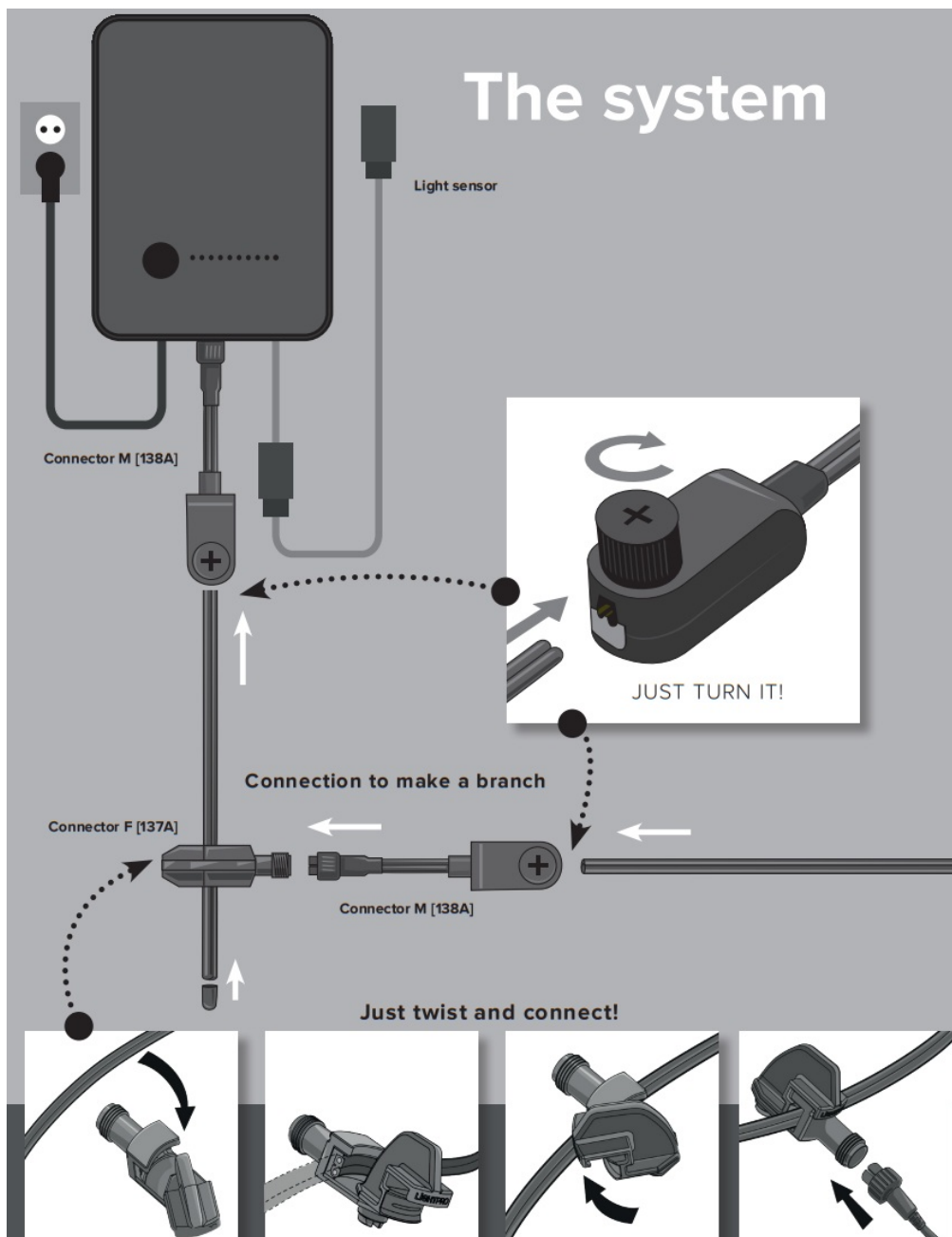


<https://qrco.de/beGoAt>

2. Connect the Gateway
3. Install the Zigbee products (Lightpro lights and Motion Sensor)

The Lightpro Switch and Camera are Wi-Fi based and do not need to be paired with the Gateway. Install the products, connect them to the app and you're done!

Note: Make sure that your WiFi router is set on 2.4GHz. If your router is set on 5GHz, then you need to change your network's Wi-Fi frequency to 2.4 GHz in the settings menu of the router. Please log into your router or contact your internet provider for this.



Thank you for purchasing the Lightpro Motion Sensor.

This document contains the required information for correct, efficient and safe use of the product. Consult the user manual of your transformer for more information about the installation and connection of your lighting plan or visit our website www.lightpro.nl Read the information in this manual carefully before using the product. Keep this manual near the product for consultation in the future.

PRODUCT DESCRIPTION

Discourage uninvited guests and ensure safety in your garden. The wireless motion Sensor works via Zigbee. The advantage of Zigbee is that the products communicate with each other, giving you an endless range. You can maintain a maximum distance of 20 metres between two different products. Make sure the motion Sensor is no further than 20 metres away from the Gateway to add in the app.

Want to turn on lights with this Motion Sensor that are not smart? This is possible using our smart Switch.

This product may only be used in combination with the Lightpro 12-Volt system. Any modification may have an impact on the safety, warranty, and correct operation of the product and/or other parts of the system.

SPECIFICATIONS MOTION SENSOR

Product	Motion Sensor
Article number	227A
Usage (max.)	1W
Maximum capacity (max.)	150W
Dimensions (H x L x W)	70 x 70 x 32 mm
Protection class	IP65
Input	12V AC/DC

CONTENT OF THE PACKAGING

[Figure A]

1. Motion Sensor
2. AAA Batteries (2x)
3. Mounting magnet
4. Screws
5. Plugs

 Verify whether all parts are included in the packaging.

For questions about parts, service, complaints, or other things, you can always contact us.

Email: info@lightpro.nl.

ZIGBEE

The products can communicate with each other via Zigbee, giving you an endless range. The maximum distance between two products is 20 meters.

For the Lightpro SMART system to work properly, the transformer must be on continuously (do not use a light sensor or other accessories).

 The motion sensor will work from dusk till dawn.

PAIRING MOTION SENSOR

1. A Gateway is required for pairing a Motion Sensor.
2. Possible: reset the motion detector.
3. Add the motion sensor to the app:
4. Select the correct Gateway to connect to.
5. The app will now connect to the Motion Sensor. This can take up to 2 minutes.
6. A notification appears once the Motion Sensor is connected.

RESETTING MOTION SENSOR

Press and hold the reset button for 5 seconds.

INSTALLATION OF THE LIGHTS

- Install the products in the desired position and lay the cables so they can be comfortably connected to the transformer or main cable.
- If products are provided with a drain hole for water, this hole must be pointing downwards.
- Use non-corrosive fixing materials (supplied as standard) if you want to bolt the products down.
- Connect the lights to the main cable by using the connector as shown in figure on page 5.
- Consult the manual of your transformer for more information.

SAFETY

- Always fit this product so that it can still be accessed for servicing or maintenance. This product must not be permanently embedded or bricked in.
- Turn off the system by pulling the plug of the transformer from the socket for maintenance.
- Regularly clean the product with a soft, clean cloth. Avoid abrasives that can damage the surface.
- Clean products with stainless steel parts with a stainless steel cleaning agent once per six months.
- Do not use a high pressure washer or aggressive chemical cleaning agents when cleaning the product. This can cause irreparable damage.
- Protection class III: this product may only be connected to safety extra-low voltage up to a maximum of 12 Volt.
- This product is suitable for outside temperatures of: -20 to 50 °C.
- Do not use this product in areas where combustible gases, fumes or liquids may be stored.



The product meets the requirements of the applicable EC, UK and EAEU guidelines.



For questions about parts, service, any complaints or other matters, you can contact us at any time.

E-mail: info@lightpro.nl



Discarded electrical equipment must not be put in the household waste. If possible, take it to a recycling company. For details of recycling, contact a municipal waste processing company or your dealer.



6 year warranty – visit our website at lightpro.nl for warranty conditions.

LIGHTPRO

PROFESSIONAL OUTDOOR LIGHTING



8 719979 283803

UK Authorised Representative (for authorities only)

ProductIP (UK) Ltd.

8, Northumberland Av.

London WC2N 5BY

Produced by:

TECHMAR B.V. | CHOPINSTRAAT 10 | 7557 EH HENGLO

THE NETHERLANDS | WWW.LIGHTPRO.NL



[LIGHTPRO 227A Motion Sensor](#) [pdf] User Manual
227A Motion Sensor, 227A, Motion Sensor, Sensor

References

- [LP Lightpro](#)
- [LP Lightpro](#)
- [User Manual](#)

Manuals+, Privacy Policy

This website is an independent publication and is neither affiliated with nor endorsed by any of the trademark owners. The "Bluetooth®" word mark and logos are registered trademarks owned by Bluetooth SIG, Inc. The "Wi-Fi®" word mark and logos are registered trademarks owned by the Wi-Fi Alliance. Any use of these marks on this website does not imply any affiliation with or endorsement.