




LiGHTPRO 225A Transformer Touch User Manual

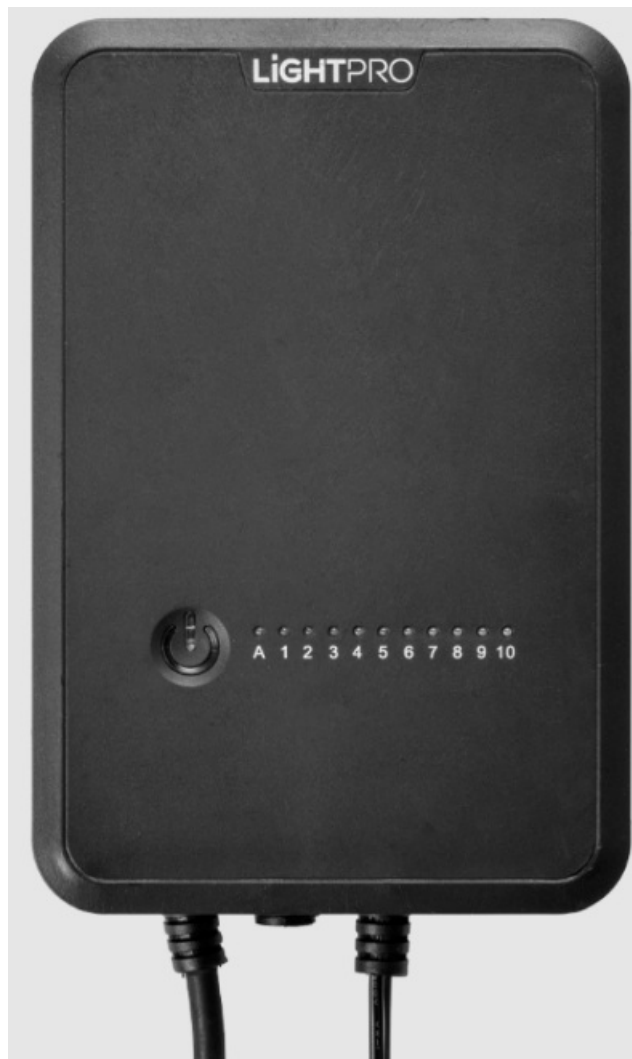
[Home](#) » [LiGHTPRO](#) » LiGHTPRO 225A Transformer Touch User Manual 

Contents

- 1 LiGHTPRO 225A Transformer Touch
- 2 Product Information
- 3 Specifications
- 4 Installation
- 5 Transformer Touch
- 6 Specifications
- 7 INSTALLATION
- 8 CONNECTING THE LIGHT SENSOR
- 9 SETTING THE TRANSFORMER
- 10 THE LIGHTING IS NOT ON
- 11 SAFETY
- 12 Documents / Resources
 - 12.1 References
- 13 Related Posts



LiGHTPRO 225A Transformer Touch



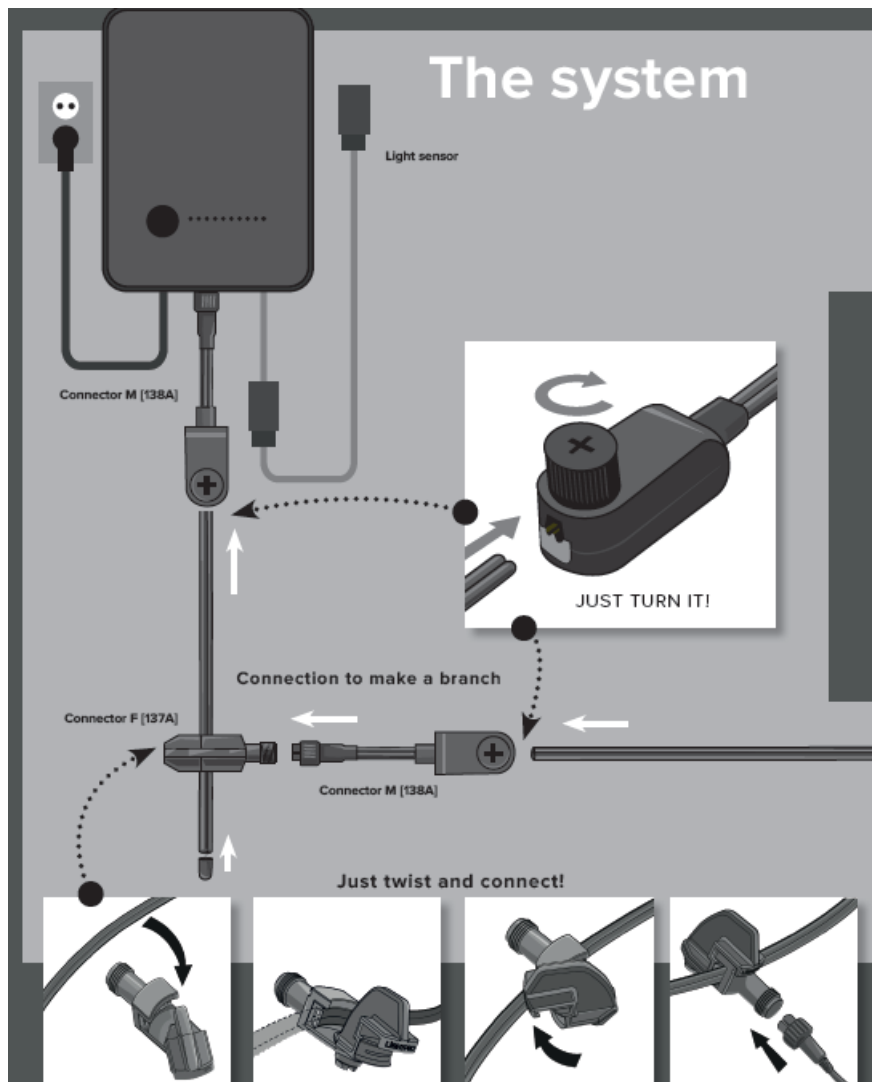
Product Information

The Transformer Touch is a product manufactured by TECHMAR B.V. It is a light transformer designed for outdoor use. The transformer comes in different models with varying power outputs and plug types. It features a light sensor and various connectors for easy installation.

Specifications

- **Product:** Lightpro Transformer Touch
- **Model Options:**
 - Transformer 100W – 225A (EU Plug)
 - Transformer 150W – 226A (EU Plug)
 - Transformer 100W – 228A (BS Plug)
 - Transformer 150W – 229A (BS Plug)
 - Transformer 100W – 233A (CH Plug)
 - Transformer 150W – 234A (CH Plug)
- **Dimensions (H x W x D):** 185 x 123 x 77 mm
- **Protection Class:** IP44
- **Cable Length:** 2m

Installation



Transformer Touch

Thank you for purchasing the Lightpro Transformer Touch. This document contains the required information for correct, efficient and safe use of the product.

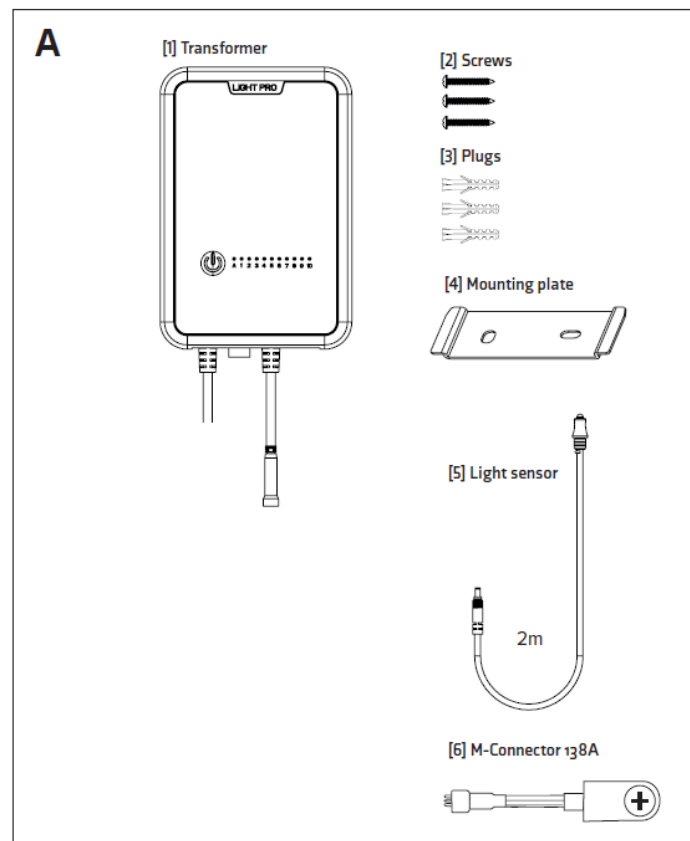
Read the information in this manual carefully before using the product. Keep this manual near the product for consultation in the future.

Specifications

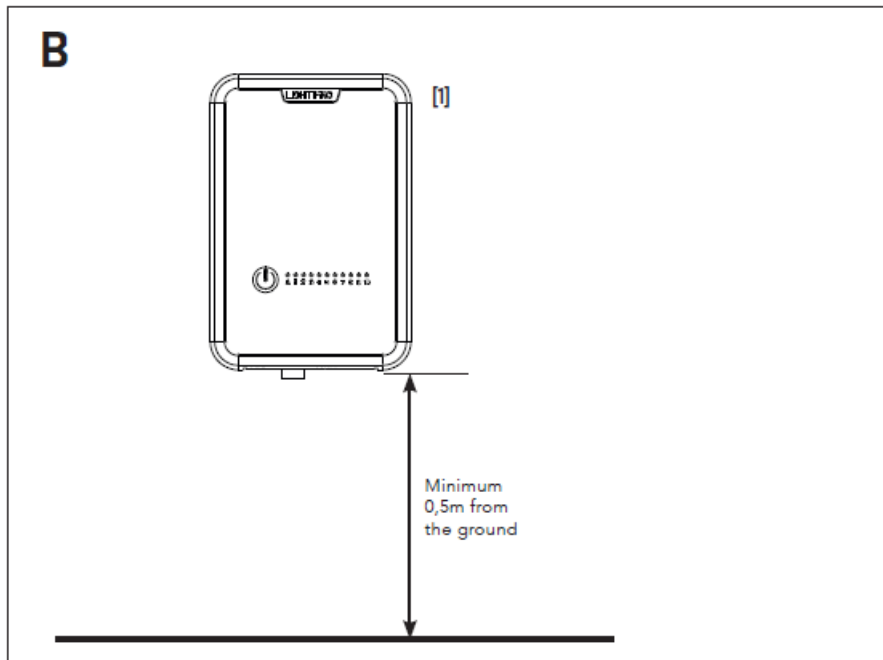
- **Product:** Lightpro Transformer Touch
- **Model Options**
 - Transformer 100W – 225A (EU Plug)
 - Transformer 150W – 226A (EU Plug)
 - Transformer 100W – 228A (BS Plug)
 - Transformer 150W – 229A (BS Plug)
 - Transformer 100W – 233A (CH Plug)
 - Transformer 150W – 234A (CH Plug)
- **Dimensions (H x W x D):** 185 x 123 x 77 mm
- **Protection Class:** IP44

- **Cable Length:** 2m

PACKAGING CONTENT [Figure A]



1. Transformator
2. Screw
3. Plug
4. Mounting plate
5. Light sensor
6. M-Connector 138A Check if all parts are present in the packaging. For questions about parts, service, and any complaints or other remarks, you can always contact us.



E-mail: info@lightpro.nl.

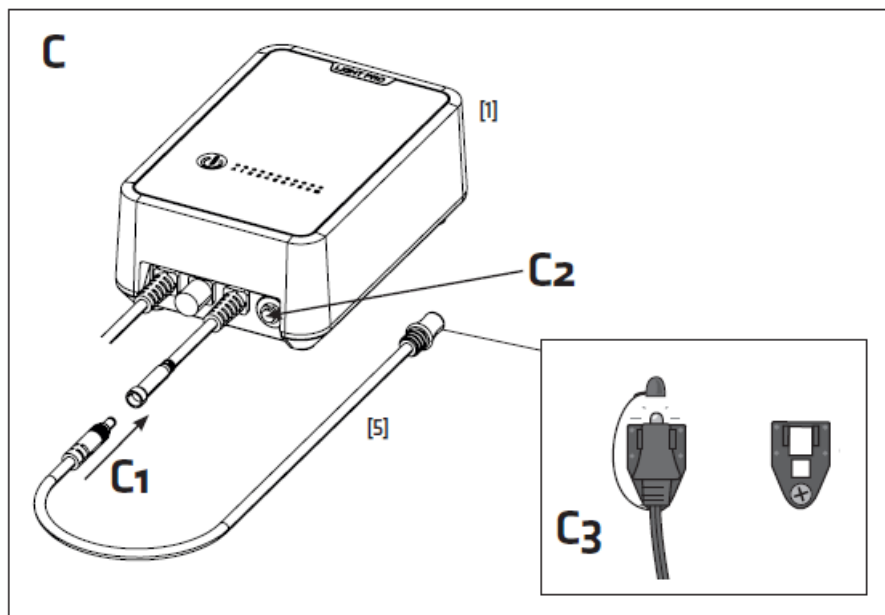
For further information regarding our system explanation; www.lightpro.nl/en/install-garden-lighting

INSTALLATION

1. Mount the mounting plate [4] with the supplied plugs [3] and screws [2] on a wall, wall or pole.
2. Slide the transformer [1] with the logo facing forward and the connection facing downwards over the mounting plate [4]. Place the transformer at least half a metre above the ground.

CONNECTING THE LIGHT SENSOR

[Figure C]



The light sensor[5] is fitted with a 2 metre long cable. The cable with sensor can be disconnected, for instance to be led through a hole in the wall. The light sensor is mounted with a clip <Fig. C3>. This clip must be attached to a wall, pole or similar. The light sensor should be mounted vertically (facing upwards).

Mount the light sensor in such a way that it cannot be influenced by light from the outside environment (car headlights, street lighting or the own garden lighting, etc.). Ensure that only day and night natural light can influence the functioning of the sensor.

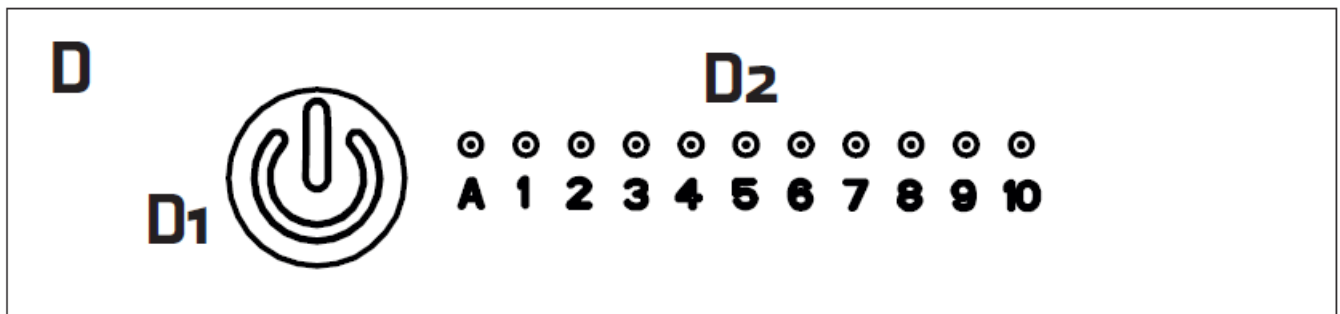
1. Mount the sensor to the clip and connect the sensor to the transformer. Check that the plug connections of the sensor cable are properly tightened for a watertight seal <Fig. C1>.
2. Connect the transformer to the system.
3. Test the sensor by covering it, using the included cap. After 45 seconds, the transformer should be activated, turning on the lighting.

SETTING THE TRANSFORMER

[Figure D]

The transformer can be set in different ways. The light sensor [5] works in combination with the time switch on the transformer. The lighting then switches on at sunset and switches off after the number of set hours or automatically at sunrise.

The control button <Fig. D1>.



At “Off”, the transformer is completely switched off.

lamp lights up red.

When “On”, the transformer is switched on. The light sensor is switched off. lamp lights blue.

- A” switches the transformer on at dusk, the transformer switches off at dawn. + A lit blue.
- 1 to 10” switches the transformer on at dusk, the transformer switches off automatically after 1 to 10. + desired setting illuminate blue.

THE LIGHTING IS NOT ON

In case after activation of the transformer (a part of) the lighting does not work, you should go through the following steps

1. Switch the transformer to “On” position, the lighting must always turn on now.
2. Is (part of) the lighting not on? Possibly the fuse switched off the transformer due to short circuit or too high a load. Reset the fuse to the original position by pressing the “Reset” button <Fig. C2>. Also check all connections thoroughly.
3. If the transformer functions properly in the ON position and (part of) the lighting is not on during use of the light sensor then check if the light sensor functions adequately and is attached to the right location (see

paragraph “light sensor”).

SAFETY

- Always fit this product so that it can still be accessed for servicing or maintenance. This product must not be permanently embedded or bricked in.
- Turn off the system by pulling the plug of the transformer from the socket for maintenance.
- Regularly clean the product with a soft, clean cloth. Avoid abrasives that can damage the surface.
- Clean products with stainless steel parts with a stainless steel cleaning agent once per six months.
- Do not use a high pressure washer or aggressive chemical cleaning agents when cleaning the product. This can cause irreparable damage.
- Protection class III: this product may only be connected to safety extra-low voltage up to a maximum of 12 Volt.
- This product is suitable for outside temperatures of: – 20 to 50 °C.
- Do not use this product in areas where combustible gases, fumes or liquids may be stored.


For questions about parts, service, any complaints or other matters, you can contact us at any time.

E-mail: info@lightpro.nl

Discarded electrical equipment must not be put in the household waste. If possible, take it to a recycling company. For details of recycling, contact a municipal waste processing company or your dealer.

6 year warranty – visit our website at lightpro.nl for 6 warranty conditions.

Documents / Resources

	<p>LiGHTPRO 225A Transformer Touch [pdf] User Manual 225A Transformer Touch, 225A, Transformer Touch, Touch</p>
---	---

References

- [LP Lightpro](#)
- [LP Lightpro](#)
- [LP Lightpro - Gartenbeleuchtung verlegen](#)
- [LP Lightpro - Installing garden lighting](#)
- [LP Lightpro - Installer un éclairage de jardin](#)
- [LP Lightpro - Tuinverlichting aanleggen](#)
- [User Manual](#)