

# LightpathLED Floor Stand Instructions

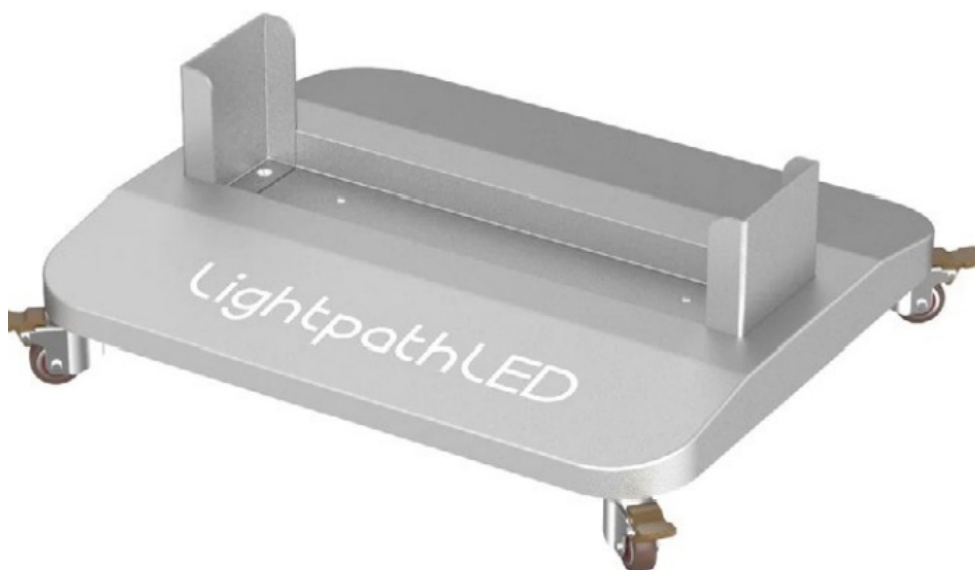
[Home](#) » [LightpathLED](#) » LightpathLED Floor Stand Instructions 

## Contents

- [1 LightpathLED Floor Stand](#)
- [2 Product Specifications](#)
- [3 Product Usage Instructions](#)
- [4 \(FAQ\)](#)
- [5 Installation](#)
- [6 Documents / Resources](#)
  - [6.1 References](#)



## LightpathLED Floor Stand



## Product Specifications

- **Product Name:** Floor Stand
- **Model Number:** FS-100
- **Material:** Steel
- **Colour:** Black
- **Dimensions:** 24 inches (Height) x 12 inches (Width) x 18 inches (Depth)

Product Usage Instructions

Installation

1. Take the wheels and screw them into the bottom of the main frame. Ensure that the wheels with brakes are on the same side. Use a wrench to tighten them.
2. Take the brackets and screw them in place.
3. Slide the panel down onto the stand.
4. Use a wrench to tighten the brackets securely.
5. With the help of another person for support, carefully tip the panel and stand down.
6. Insert the final two screws into the bottom of the floor stand to provide extra support.

(FAQ)

- **Q:** Can the floor stand be used for heavy equipment?
- **A:** The floor stand is designed to support up to 50 lbs of weight, so it is suitable for most standard office equipment and displays.
- **Q:** Are replacement wheels available for this floor stand?
- **A:** Yes, replacement wheels are available for purchase separately. Please contact customer support for more information on ordering replacement parts.



Installation

1. Take the wheels and screw them into the bottom of the main frame. 2 wheels have breaks, so put these on the same side. Use a wrench to tighten it.
2. Take brackets and screw them in.
3. Slide the panel down. Use a wrench to tighten the brackets. Carefully (with help), tip panel and stand down and insert the final 2 screws into the bottom of the floor stand which will add extra support

Revision History	
Date	Description of changes
January 2024	New Layout



## Documents / Resources

<div><div></div><div></div><div><div>Floor Stand</div><div>Installation</div></div></div>	<div><div><a href="#">LightpathLED Floor Stand</a> [pdf] Instructions</div><div>Floor Stand, Stand</div></div>
---	--

## References

- [User Manual](#)

**Manuals+, Privacy Policy**

This website is an independent publication and is neither affiliated with nor endorsed by any of the trademark owners. The "Bluetooth®" word mark and logos are registered trademarks owned by Bluetooth SIG, Inc. The "Wi-Fi®" word mark and logos are registered trademarks owned by the Wi-Fi Alliance. Any use of these marks on this website does not imply any affiliation with or endorsement.