




# lightmaXX LIG0016698-000 Vector Spot Zoom 2.0 User Manual

[Home](#) » [lightmaxx](#) » lightmaXX LIG0016698-000 Vector Spot Zoom 2.0 User Manual 



## Contents

- [1 Important safety instructions! Please read before connection!](#)
- [2 Guarantee:](#)
- [3 Intended use:](#)
  - [3.1 Set up:](#)
- [4 Operating mode DMX:](#)
- [5 Operation:](#)
- [6 Connections and controls:](#)
- [7 Mounting options:](#)
- [8 Troubleshooting:](#)
- [9 Environmental protection:](#)
  - [9.1 Note](#)
  - [9.2 Documents / Resources](#)
    - [9.2.1 References](#)

## Important safety instructions! Please read before connection!



**DANGER!** (Electrical shock due to high voltages in the device)

The housing must not be removed! There are no parts to be maintained in the device. Inside the unit there are components which are under high electrical voltage.

Before each use, check the device for damage or the absence of components, protective devices or housing parts. If this is the case, the device must not be used!

Leave maintenance and repair work to a qualified service workshop or contact your dealer. In the case of a malfunction of the device, operation must also be stopped immediately until the device has been repaired by a

specialist!



**DANGER! (Electric shock due to short circuit)**

Modifications to the power cord or plug are prohibited. If the power cord is damaged, it must be replaced immediately with an original spare part from the manufacturer. Failure to do so may result in fire or death due to electric shock!



**DANGER! (For babies and children)**

Dispose of or store any packaging material properly! Packaging material must be kept out of the reach of babies and children due to the risk of suffocation.

Ensure that children never use the appliance unattended! In addition, make sure that children do not remove (small) parts from the device, as they could suffocate by swallowing parts!



**WARNING! (High light intensity – eye injuries)**

A direct view into the light source is absolutely to be omitted!



**WARNING! (Epilepsy)**

Stroboscopic effects (flashes of light) can trigger seizures of epilepsy in some people. Accordingly sensitive people should be warned and should not be in the vicinity of such devices.



**Hint! (Fire hazard due to overheating)**

The maximum permissible ambient temperature of this device is 40°C. Ensure that the unit is placed in a well-ventilated location away from direct heat sources, naked flames, combustible materials, and liquids. A minimum distance of 1 m is required.

Do not tape or cover the ventilation slots of the unit



**Hint! (Operating conditions)**

Due to its structural characteristics, the device is designed for indoor operation (IP20).

Never expose the device to rain, moisture or liquids as this may cause damage.

Vibrations, dust or sunlight can also cause damage, avoid them!



**Hint! (Power supply)**

It is essential that you check that the device voltage matches your local mains voltage. It is highly recommended

that you fuse your mains socket with a residual current circuit breaker (FI).

If you do not use your device for a longer period of time or carry out maintenance work, disconnect the device from the mains in order to minimize danger. The same applies to storm conditions such as thunderstorms, floods, etc.



**Hint! (Error during data transmission)**

Never connect the DMX input or output to audio devices such as power amplifiers or mixing consoles!

DMX cables enable trouble-free operation and the highest possible transmission reliability of signal data. Do not use microphone cables!



**Hint! (Condensation)**

To avoid condensation in the unit, the unit should adapt to the ambient temperature before commissioning.



**Hint! (Unwanted odours)**

A new product can sometimes lead to unwanted odours. This reaction is normal and disappears after a few minutes

**Symbols on device and packaging:**



The lightning flash symbol warns the user of uninsulated voltages and the risk of electric shock.



The exclamation mark symbol draws the user's attention to important maintains and operating instructions in the manual.



Only suitable for indoor use.



This symbol defines the minimum distance of the object to be illuminated.



Read the manual

Please read and follow the warnings and recommendations carefully to ensure safe and trouble-free use.

**Installation:**

Be sure to check the unit for damage before use. Use the original packaging or a suitable transport or storage packaging to protect the product from dust, moisture, etc. when not in use.

The unit can be installed either upright or suspended. The device must always be attached to a solid, approved carrier or a suitable surface. Note the load limit of the selected installation position (e.g. for tripods).

The opening of the bracket must be used to fasten the device. Always provide a second, independent safety backup for the device, e.g. with a safety cable.

Work on the device (e.g. assembly) should always be carried out from a stable and permissible platform. Make sure that the area below you is closed off.



**WARNING! (Risk of injury due to falling down)**

Improper installation can cause considerable injury and damage!

The installation of the device should always be carried out by experienced personnel and must be carried out in compliance with the mechanical and electrical safety regulations in your country.

Please note that it is not possible to use this device with a dimmer!

Congratulations on your new lightmaXX Vector Spot Zoom 2.0!

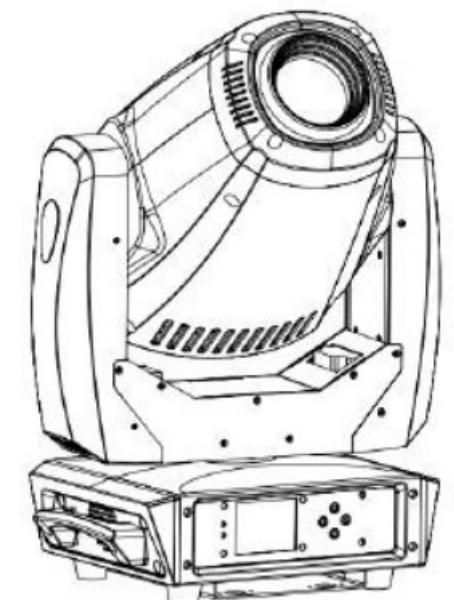
Thank you for choosing a lightmaXX product. Through efficient development and economical production, lightmaXX enables high quality products at a fantastic price.

Please read the instruction manual carefully to learn about all the features of this product and keep it for future use.

Have fun with your new product!

Your lightmaXX Team

**Scope of delivery:**



<b>lightmaXX Vector Spot</b>	<b>Quantity</b>
Zoom 2.0	1
Omega Bracket	2
Power cord	1
Manual	1

### **Guarantee:**

The current general terms and guarantee conditions of the Music Store professional GmbH apply.

You can view it at: [www.musicstore.de](http://www.musicstore.de)

If you have any questions or suggestions, please contact us:

### **Music Store professional GmbH**

Istanbulstr. 22-26

51103 Cologne

Managing Director: Michael Sauer  
WEEE-Reg.-No. DE 41617453

Tel: +49 221 8884-0  
Fax: +49 221 8884-2500  
[info@musicstore.de](mailto:info@musicstore.de)

---

### **Intended use:**

The lightmaXX Vector Spot Zoom 2.0 was designed for use as an electronic LED lighting effect. The device may only be used for this purpose and in accordance with the operating instructions. Other purposes as well as operation under other operating conditions are expressly not intended and can lead to damage to property or personal injury! No liability is assumed for damage resulting from improper use.

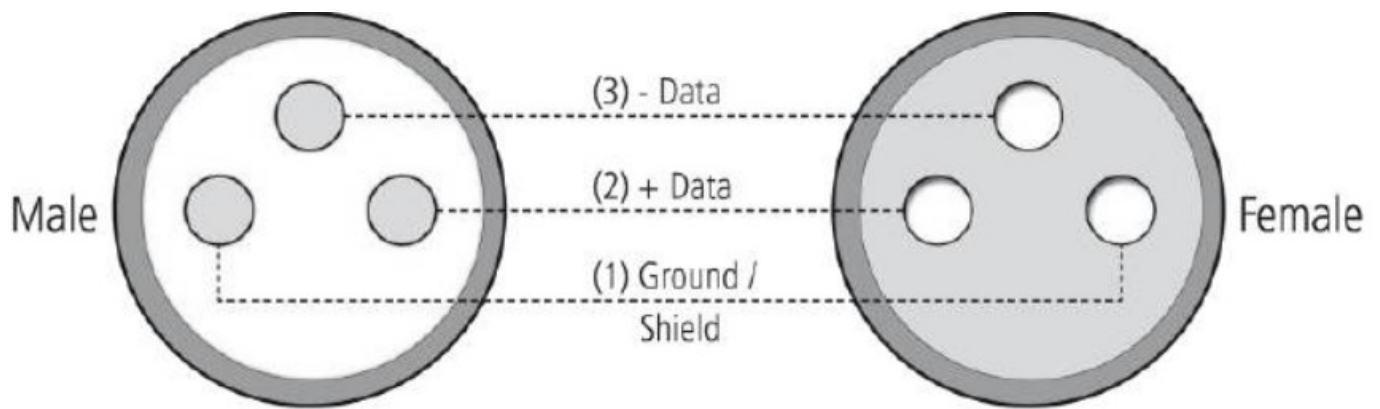
It must be ensured that the device is operated exclusively by trained and competent users who are in full possession of their mental, physical and sensory abilities. The use of other persons is expressly only permitted at the request of a person responsible for their safety, who instructs or supervises the use.

### **Set up:**

All connections of the device should be made before switching on. Only use high-quality cables that are as short as possible for the connections.

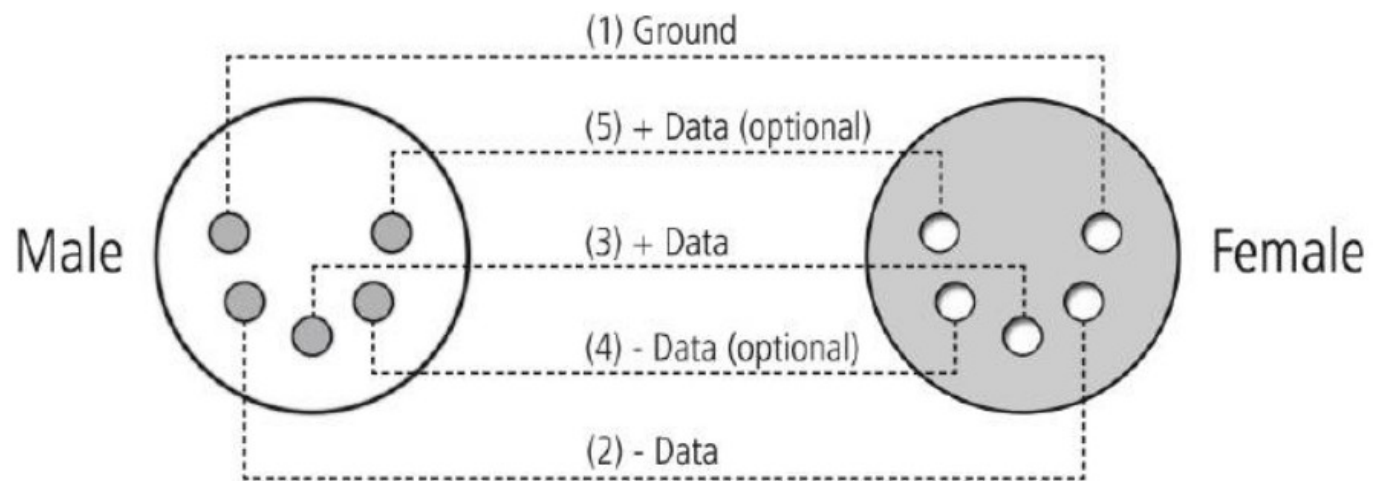
Configuration of the DMX connector:

### 3 pin:



Resistance 120 ohm //  $\frac{1}{4}$  w between pin 2 (DMX-) and pin 3 (DMX+) of the last fixture.

### 5 pin:



### Operating mode DMX:

Connect the DMX input of your device to the DMX output of your DMX controller, your DMX software or the DMX output of a device already in your DMX line. Always use a DMX cable with a 110 Ohm resistor for this connection.

Address the device according to your DMX configuration.

The following table shows the respective DMX modes of the individual devices with the corresponding values and functions:

#### 6-Channel-Mode

Channel	Value	Function
1	000-255	X
2	000-255	Y
3	000-255	Dimmer (0-100%)
4	000-004 005-250 251-255	Shutter closed Strobe Effect (Speed: slow to fast) Shutter open
5	000-007 008-047 048-087 088-127 128-167 168-207 208-247 248-255	No function Auto Play 1 Auto Play 2 Auto Play 3 Auto Play 4 Auto Play 5 Auto Play 6 Colour Gobo Sound Control
6	000-007 008-032 033-058 059-084 085-110 111-136 137-162 163-188 189-214 215-240 241-255	No function X/Y Auto Run 1 X/Y Auto Run 2 X/Y Auto Run 3 X/Y Auto Run 4 X/Y Auto Run 5 X/Y Auto Run 6 X/Y Auto Run 7 X/Y Auto Run 8 X/Y Auto Run 9 X/Y Sound Control

### 18-Channel-Mode

Channel	Value	Function
1	000-255	Dimmer (0-100%)
2	000-004 005-250 251-255	Shutter closed Strobe Effect (Speed: slow to fast) Shutter open
3	000-255	x
4	000-255	X-Fine
5	000-255	Y
6	000-255	Y-Fine
7	000-255	XY Speed

8	000-004 005-013 014-022 023-031 032-040 041-049 050-058 059-067 068-076 077-085 086-094 095-103 104-112 113-121 122-130 131-139 140-195 196-199 200-255	Open (White) White/Colour 1 Colour 1 Colour 1/Colour 2 Colour 2 Colour 2/Colour 3 Colour 3 Colour 3/Colour 4 Colour 4 Colour 4/Colour 5 Colour 5 Colour 5/Colour 6 Colour 6 Colour 6/Colour 7 Colour 7 Open (White) Forward Rainbow Effect (slow to fast) Rotation Stop Backward Rainbow Effect (slow to fast)
9	000-007 008-017 018-027 028-037 038-047 048-057 058-067 068-077 078-087 088-097 098-107 108-117  118-127  128-137 138-147 148-199 200-203 204-255	Open (White) Gobo 1 Gobo 2 Gobo 3 Gobo 4 Gobo 5 Gobo 6 Gobo 7 Gobo 1 Shake Gobo 2 Shake Gobo 3 Shake Gobo 4 Shake  Gobo 5 Shake  Gobo 6 Shake Gobo 7 Shake Forward Rainbow Effect (slow to fast) Rotation Stop Backward Rainbow Effect (slow to fast)
10	000-007 008-017 018-027 028-037 038-047 048-057 058-067 068-077 078-087 088-097 098-107 108-117 118-127 128-137 138-147 148-199 200-203 204-255	Open (White) Gobo 1 Gobo 2 Gobo 3 Gobo 4 Gobo 5 Gobo 6 Gobo 7 Gobo 1 Shake Gobo 2 Shake Gobo 3 Shake Gobo 4 Shake Gobo 5 Shake Gobo 6 Shake Gobo 7 Shake Forward Rainbow Effect (slow to fast) Rotation Stop Backward Rainbow Effects (slow to fast)



11	000-007 008-129 130-133 134-255	Stop Forward Gobo2 Rotation (slow to fast) Stop Backward Gobo2 Rotation (slow to fast)
12	000-255	Focus
13	000-255	Zoom
14	000-007 008-099 100-130 131-255	Open (White) Prism 1 Open (White) Prism 2
15	000-007 008-129 130-133 134-255	Stop Forward Prism Rotation (fast to slow) Stop Backward Prism Rotation (slow to fast)
16	000-007 008-047 048-087 088-127 128-167 168-207 208-247 248-255	No function Auto Play 1 Auto Play 2 Auto Play 3 Auto Play 4 Auto Play 5 Auto Play 6 Colour Gobo Sound Control
17	000-007 008-032  033-058  059-084 085-110 111-136 137-162 163-188 189-214 215-240 241-255	No function X/Y Auto Run 1  X/Y Auto Run 2  X/Y Auto Run 3 X/Y Auto Run 4 X/Y Auto Run 5 X/Y Auto Run 6 X/Y Auto Run 7 X/Y Auto Run 8 X/Y Auto Run 9 X/Y Sound Control

18	001-200 201-255	Speed Reset (10S)
----	--------------------	----------------------

**Static, Auto or Sound mode:**

The device contains automatic programs that run according to fixed schemes (Auto) or are recalled via the built-in microphone to match the music (Sound). The selection of the respective mode takes place via the menu directly on the device.

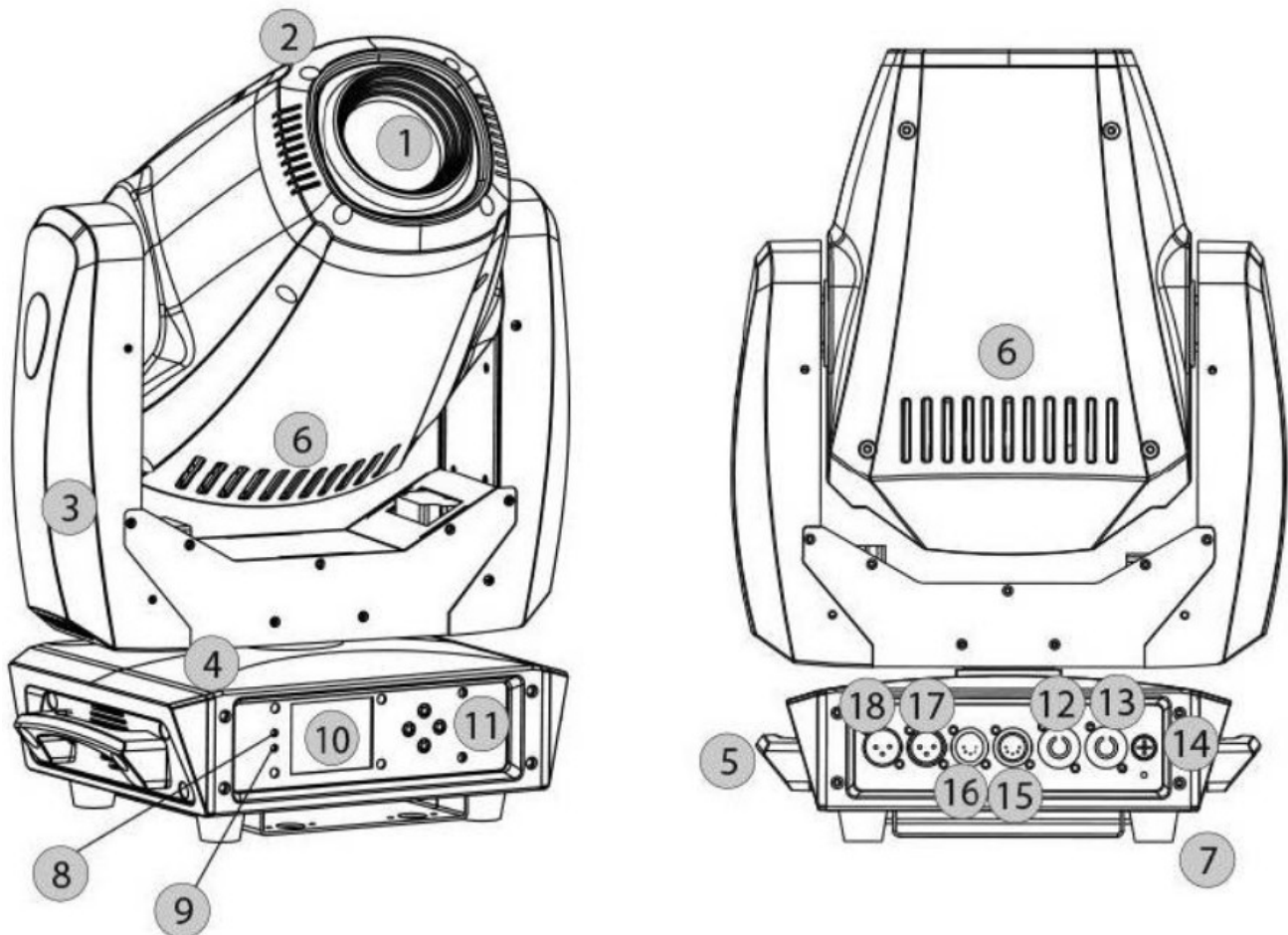
If you connect several devices of the same type via DMX, they can be controlled simultaneously via the master device. To do this, set the desired function “Master” on the first device of the line, the other devices of the series must now be set as “Slave”. Now the first device of the line gives the function to all other devices and all devices run simultaneously.

**Operation:**

**Start:**

Connect the device to the mains and wait a few seconds until it is ready for operation.

**Connections and controls:**



No.	Designation	No.	Designation
1	Lens	10	Display
2	Projector head	11	Menu keys
3	Projector arm	12	Power supply input (PowerCon)
4	Base	13	Power supply input (PowerCon)
5	Carrying handle	14	Fuse holder
6	Ventilation shaft	15	DMX Out (5-pole)
7	Rubber base	16	DMX In (5-pole)
8	DMX light	17	DMX Out (3-pole)
9	Error light	18	DMX In (3-pole)

### Menu:

Navigation in the menu is via the four menu buttons below the display. Use the “Mode” button to activate the menu, navigate via the “Up” and “Down” buttons. A corresponding selection is confirmed with the “Enter” key.

The menu structure in detail:

Display	Submenu	Value	Function
DMX Address		001-512 DMX 6 Ch DMX 18 CH	Setting DMX-Adress  DMX 6 Channel Mode  DMX 18 Channel Mode
Operating mode	Auto	Perform Mode 1 Perform Mode 2 Perform Mode 3 Perform Mode 4 Perform Mode 5 Perform Mode 6 Perform Mode 7 Perform Mode 8	Program Auto Run
	Sound		Sound Control
	Master Auto	Perform Mode 1 Perform Mode 2 Perform Mode 3 Perform Mode 4 Perform Mode 5 Perform Mode 6 Perform Mode 7 Perform Mode 8	Program Auto Run Master Mode
	Master Sound		Master Mode Sound Control
	Slave		Slave Control

Language Setting	Chinese English		Menu language
Advanced Setting	Pan Reverse Tilt Reverse Display Reverse Reset Motor Factory Reset Home Position PAN TILT Dimmer Colour fixed Gobo Rotation Gobo Focus Zoom Prism Rotation Gobo Wheel Mic Sensitive	Code=18 . =000 . =000 . =000 . =000 . =000 . =000 . =000 . =000 . =000 . =000 = 000	PAN Reverse TILT Reverse Display Reverse Reset Motor Factory Reset Home Position PAN TILT Dimmer Colour fixed Gobo Rotation Gobo Focus Zoom Prism Rotation Gobo Wheel Mic Sensitive
System Info	Current Time Total Time Current Mode TemperatureSoftware V ersion		Current Time Total Time Current Mode Temperature Software Version
Manual Control	PAN TILT PAN/TILT Speed Dimmer Strobe Colour fixed Gobo Rotation Gobo Rotation Gobo Wheel Focus Prism Prism Wheel Zoom	. =000 . =000 . =000 . =000 . =000 . =000 . =000 . =000 . =000 . =000 . =000 . =000 . =000	PAN/TILT Speed Dimmer Strobe Colour fixed Gobo Gobo RotationRotation Gobo Wheel Focus Prism Prism Wheel Zoom

## Mounting options:

**ATTENTION:** Install the device outside the audience's range.

It must be ensured that the intended mounting point has sufficient load-bearing capacity. The projector's

suspension devices must be designed and dimensioned to withstand 10 times the payload for 1 hour without permanent damaging deformation.

The device must always be protected by a second independent fuse that complies with the applicable regulations.

There must be no persons underneath the device when it is mounted or is maintained.

The unit must be operated at least 0.5m from the nearest flammable surface.

Hanging installation may only be carried out by qualified personnel. The permissible load-bearing capacity and the applicable regulations for event technology must be observed. Under certain conditions, acceptance by experts or institutions is necessary.

It must be ensured that the device is safely mounted before it is put into operation.

If the unit is to be suspended from the ceiling or from high beams, etc., it is always necessary to work with truss systems. The unit must never be fixed in the room so that it can vibrate freely.

The device can be placed directly on the floor or in any position in the trussing without changing its functional properties.

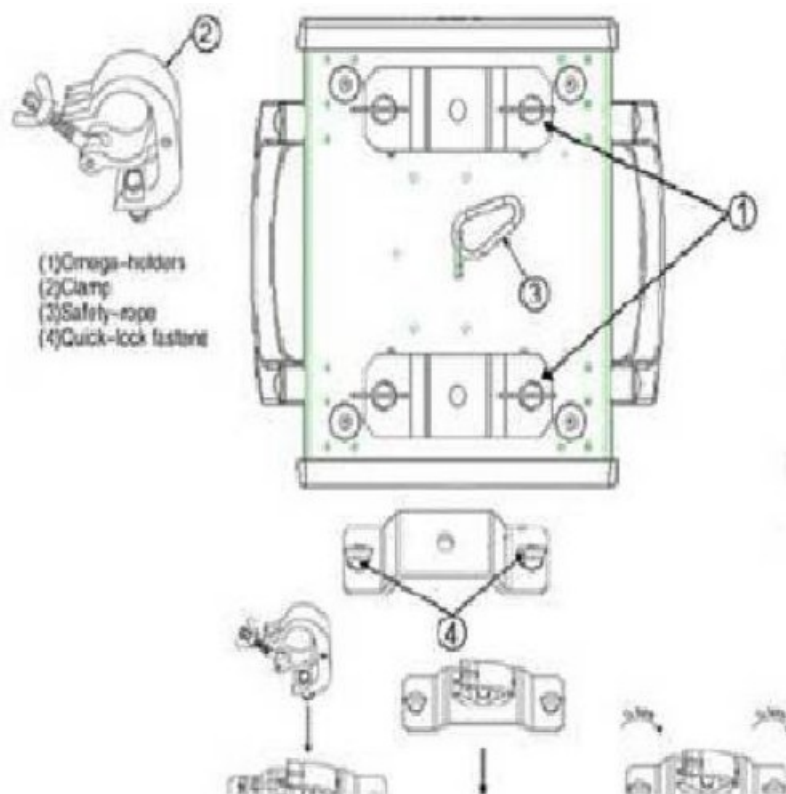
The unit is equipped with two quick-fit Omega suspension brackets. These are screwed to the unit and provide a mounting hole for common clamps. When mounting this device on a crossbar, make sure that the clamp is screwed to the Omega suspension brackets using an M10 screw and nut. Insert the two quick-release fasteners of the respective Omega support bracket into the openings provided on the underside of the unit. Tighten the quick-release fasteners clockwise until they stop.

Always secure the device with a suitable safety rope when it is mounted overhead (mounting height >100 cm). Only safety ropes and quick links in accordance with DIN 56927, shackles in accordance with DIN EN 1677-1 and BGV C1 chain binders can be used. The safety ropes, quick-connect links, shackles and chain binders must be sufficiently dimensioned and correctly applied on the basis of the latest industrial safety regulations (e.g. BGV C1, BGI 810-3).

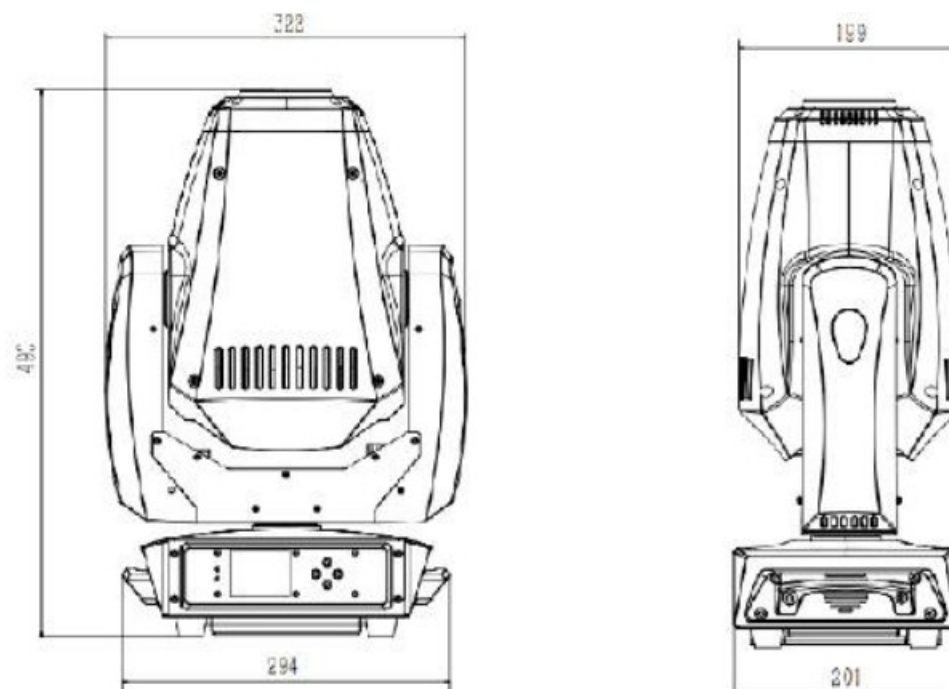
Hook the quick-release link into the hole provided in the base plate. Guide the safety rope over the crossbar or a secure fixing point. Hook the end into the quick-release link and tighten the locking nut firmly.

The maximum drop distance must not exceed 20 cm.

A safety rope that has been subjected to a fall load or has been damaged may no longer be used as a safety rope.



<b>Model</b>	<b>lightmaxx Vector Spot Zoom 2.0</b>
Power supply	AC100-240V 50/60 Hz
Total connected load	260 Watt
Modes of operation	Automatic Mode, DMX, Master/Slave, Sound Mode
DMX Channels	6 and 18
PAN Scan	540° (16-bit), electrical correction
TILT Scan	270° (16-bit), electrical correction
Colour Wheel	Colour Wheel, 7 types of color chips in one color wheel
Static Gobo	7 Gobos + open
Rotation Gobo	7 Gobos + open
Effect Wheel	Two effects Prism, a six-line prism, one rotary five-round prism, bidirectional rotation.
Lens optical system mechanical focus, beam angle	11°-25°
Dimmer	0-100%
Lightning rate	0-20 Hz
Prism	bidirectional rotation
Connections	DMX-In/Out (3-po1/5-pol) PowerCon-In/Out
Dimensions (LxWxH)	328 x 220 x 482 mm
Weight	12,5 Kg



## Troubleshooting:

The following overview serves as an aid for quick troubleshooting. If you are unsure, contact the manufacturer, the dealer or the corresponding specialist personnel. Never open the device on your own!

Symptom	Troubleshooting
No function	Check the mains connection and the fuse
No reaction in DMX mode	Check the cable connections
	Check your DMX address setting
	If available, try an alternative DMX controller
No reaction in remote mode	Change the battery in your remote control
	Ensure that the IR transmitter and receiver are at close and clear distances from each other

If the specified corrections have not led to success, please contact our service staff. The contact details can be found at [www.musicstore.de](http://www.musicstore.de)

## Cleaning:

Regular cleaning of the device from dirt and dust increases the shelf life of the product. Always disconnect the device from the power supply before cleaning it! Never clean the appliance wet!

Optical lenses should be cleaned with a dry microfiber cloth to optimize light output. Ventilation grilles and openings should always be cleaned of dust and dirt. Suitable compressed air sprays are recommended for this application.

## Environmental protection:

The company MUSIC STORE professional GmbH always strives to reduce the burden of packaging to a minimum. The use of environmentally friendly and recyclable materials is of fundamental importance to us. Please dispose of and recycle the packaging components after use properly.



#### Disposal of packaging:

Ensure that paper packaging, plastic materials, etc. are separately recycled. Observe the corresponding disposal instructions on the packaging.



#### Disposal of batteries:

Batteries do not belong in the garbage! Please keep batteries in accordance with the

official collection points or disposal stations in accordance with the specifications.



#### Disposal of your old device:

Do not dispose of the device with household waste! This device is subject to the WEEE Directive (Waste Electrical and Electronic Equipment) in its currently valid version.

The device will be disposed of by an approved waste disposal company or your local waste disposal office. The regulations valid in your country must be observed!




Manufacturer: MUSIC STORE professional GmbH,  
Istanbulstraße 22-26,  
51103 Cologne, Germany

#### Note

 **lightmaXX**  
MS ID: LIG0016698-000



11/2019

#### Documents / Resources

	<p><a href="#">lightmaXX LIG0016698-000 Vector Spot Zoom 2.0</a> [pdf] User Manual LIG0016698-000 Vector Spot Zoom 2.0, LIG0016698-000, Vector Spot Zoom 2.0, Spot Zoom 2.0, Zoom 2.0</p>
---	---



## References

-  [Music Store Online-Shop für Musikinstrumente | MUSIC STORE professional](#)
-  [Music Store Online-Shop für Musikinstrumente | MUSIC STORE professional](#)

Manuals+.