



LiftMaster HDSL24UL 24VDC HD Variable Speed Slide Gate Operator Instructions

[Home](#) » [LiftMaster](#) » LiftMaster HDSL24UL 24VDC HD Variable Speed Slide Gate Operator Instructions 

Contents

- [1 LiftMaster HDSL24UL 24VDC HD Variable Speed Slide Gate Operator](#)
- [2 Product Information:](#)
- [3 Product Usage Instructions](#)
- [4 REPAIR PARTS](#)
- [5 Documents / Resources](#)



LiftMaster HDSL24UL 24VDC HD Variable Speed Slide Gate Operator



Product Information:

The product is a HD Gates HDSL24UL, which is a heavy-duty gate operator. It is equipped with various components and accessories to ensure smooth operation and functionality.

- Idler Pulley Kit K41-0118-000
- Transformer, HD Gates K41-0067-000
- HD Power Board K41-0071-000
- Main Board, HD Gates K41-0073-000
- Dust Guard, HD Gates K41-0075-000
- APE, HDSL24UL K41-0051-00
- Limit Assembly Base, HDSL24UL K41-0053-000
- Alarm, HDSL24UL K41-0068-000
- EMI Board, HD Gates K1D7078
- Output Sprocket, HDSL24UL K41-0063-000
- Relay Adapter Board, HD Gates K41-0072-000
- Expansion Board K1D8387-1CC
- BLDC Motor Drive, HD Gates K41-0095-000
- Limit Reduction Chain, HDSL24 K41-0056-000
- Pivot Bracket Assembly, HD Gates K41-0074-000
- Cover, HDSL24UL K41-0055-000
- Bridge Rectifier, HD Gates K41-0083-000
- Battery, 7AH 12 Vdc K74-30762 (2) 29-NP712 (1)
- Gear Reducer, 39:1, HD Gates K41-0062-000
- Motor, BLDC, HD Gates K41-0082-000
- Interlock Switch, HDSL24UL K41-0081-000
- Key Set with Cam Lock 80-50142
- Gear Box Disconnect, HDSL24UL K41-0079-000
- Door Access Cover 13-37266
- NOT SHOWN K41-0047-000 K94-34778
- K41-0065-000 19-50310 19-40240D K77-36764
- K07-50637 K41-0093-000 K41-0097-000
- K41-0102-000
- 40-39235
- Wire Harness Kit, HD Gates Wire Harness – control board to expansion board
- Gear Box Vent Plug
- #40 Master Link #40 Chain – 10 feet
- Hardware Kit (chain bolt and chain bracket)
- Chain Bolt Reset Switch
- BLDC Motor, Motor Drive, Power Board Kit
- Battery Harness, 33AH, HD Gates
- Warning Sign

Product Usage Instructions

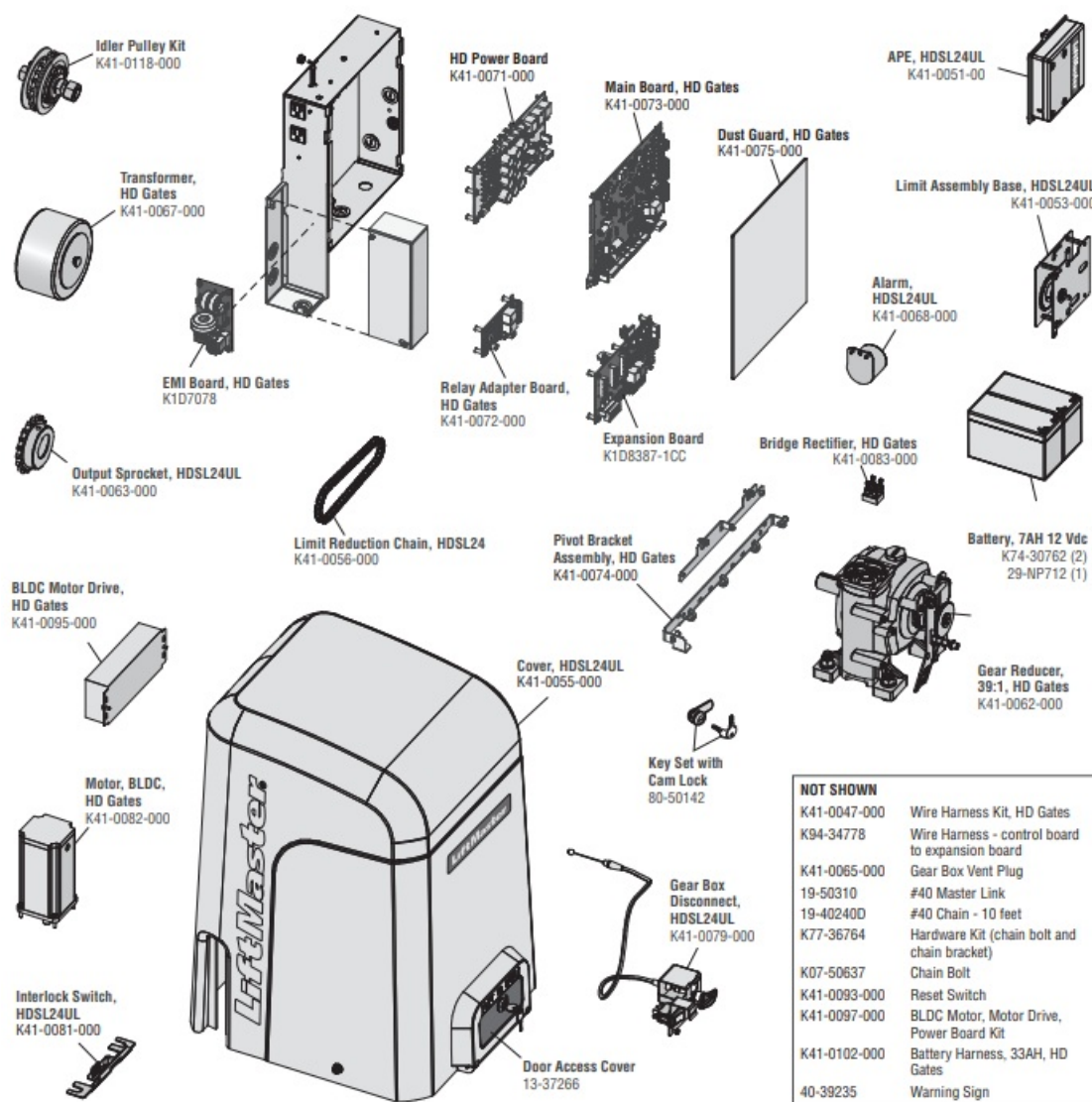
To properly use the HD Gates HDSL24UL gate operator, please follow the instructions below:

1. Ensure that all repair parts and components are properly installed and connected according to the provided user manual.

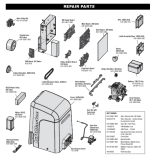
2. Make sure the gate operator is securely mounted and aligned with the gate.
3. Connect the wire harness kit from the control board to the expansion board, ensuring proper connections.
4. Install the gear box vent plug to maintain proper ventilation and prevent moisture build-up.
5. Attach the #40 master link to the #40 chain, ensuring a secure connection.
6. Use the hardware kit (chain bolt and chain bracket) to securely fasten the chain to the gate operator.
7. Ensure that the chain bolt reset switch is properly installed and functioning.
8. If necessary, install the BLDC motor, motor drive, and power board kit according to the provided instructions.
9. Connect the battery harness (33AH) to the HD Gates battery (7AH 12 Vdc) for power supply.
10. Place the warning sign in a visible location near the gate operator to alert users of potential hazards.

Following these instructions will ensure proper usage and functionality of the HD Gates HDSL24UL gate operator. For further information or troubleshooting, refer to the user manual or contact customer support.

REPAIR PARTS



Documents / Resources



[LiftMaster HDSL24UL 24VDC HD Variable Speed Slide Gate Operator](#) [pdf] Instructions
HDSL24UL 24VDC HD Variable Speed Slide Gate Operator, HDSL24UL, 24VDC HD Variable
Speed Slide Gate Operator, Variable Speed Slide Gate Operator, Speed Slide Gate Operator, S
lide Gate Operator, Gate Operator, Operator