



LiftMaster 881LMW Multi Function Control Panel and Premium Motion Detecting Control Panel Installation Guide

[Home](#) » [LiftMaster](#) » LiftMaster 881LMW Multi Function Control Panel and Premium Motion Detecting Control Panel Installation Guide 

LiftMaster 881LMW Multi Function Control Panel and Premium Motion
Detecting Control Panel Installation Guide

LiftMaster® **MULTI-FUNCTION CONTROL PANEL** **(SECURITY+ 2.0®) MODEL 882LMW** **AND** **PREMIUM MOTION-DETECTING** **CONTROL PANEL MODELS 881LMW AND 886LMW**

WARNING

To prevent possible SERIOUS INJURY or DEATH from electrocution:

- Be sure power is NOT connected BEFORE installing door control.
- Connect ONLY to 12 VOLT low voltage wires. To prevent possible SERIOUS INJURY or DEATH from a closing garage door:
- Install door control within sight of garage door, out of reach of children at a minimum height of 5 feet (1.5 m), and away from ALL moving parts of door.
- NEVER permit children to operate or play with door control push buttons or remote control transmitters.
- Activate door ONLY when it can be seen clearly, is properly adjusted, and there are no obstructions to door travel.
- ALWAYS keep garage door in sight until completely closed. NEVER permit anyone to cross path of closing

garage door.

- Unattended devices and features are to be used ONLY with sectional doors.

⚠ **WARNING:** This product can expose you to chemicals including lead, which are known to the State of California to cause cancer or birth defects or other reproductive harm. For more information go to www.P65Warnings.ca.gov

For use with Security+ 2.0® Garage Door Openers, Wi-Fi® enabled Security+ 2.0® Garage Door Openers (indicated by the Wi-Fi logo on the garage door opener cover) and MyQ® accessories.

UNATTENDED OPERATION

The Timer-to-Close (TTC) feature, the MyQ® Smartphone Control app, and MyQ® Garage Door and Gate Monitor are examples of unattended close and are to be used ONLY with sectional doors. Any device or feature that allows the door to close without being in the line of sight of the door is considered unattended close. The Timer-to-Close (TTC) feature, the MyQ® Smartphone Control, and any other MyQ® devices are to be used ONLY with sectional doors.

For more information: www.devancocanada.com or call toll free at [855-931-3334](tel:855-931-3334)

Contents

1 INSTALLATION

2 PROGRAM

3 FEATURES

3.1 LOCK

3.2 MOTION SENSOR

3.3 MAINTENANCE ALERT SYSTEM (MAS)

3.4 LIGHT

3.5 TIMER-TO-CLOSE (TTC)

4 Documents / Resources

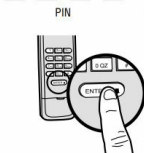
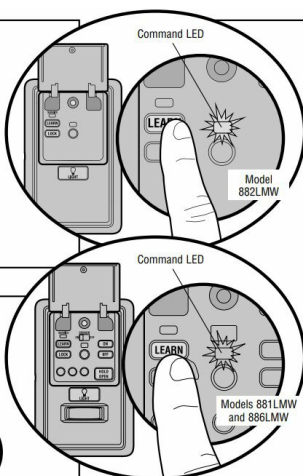
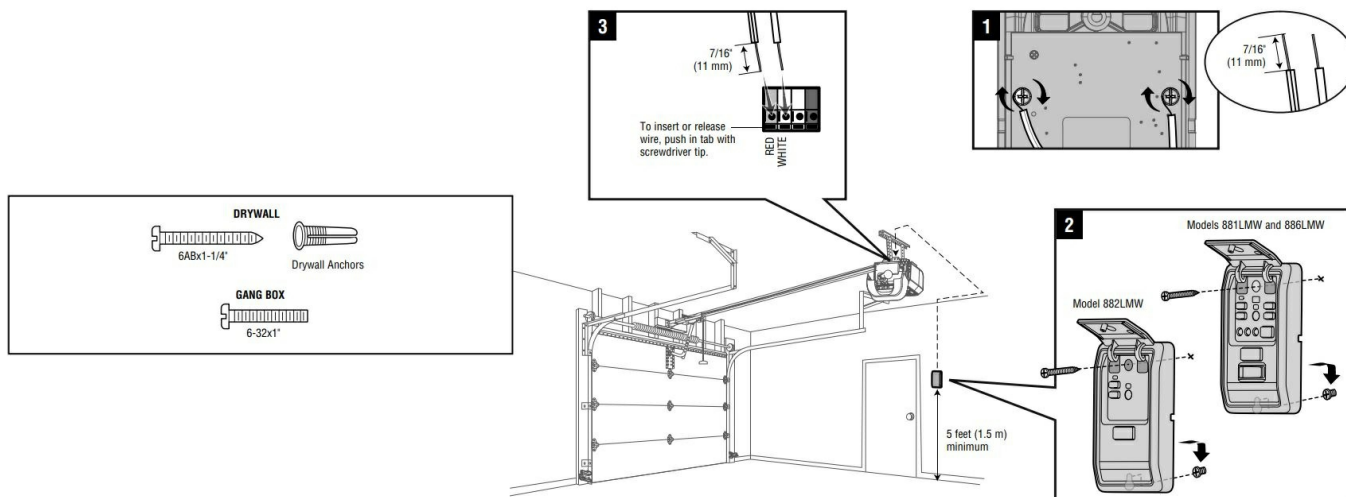
4.1 References

INSTALLATION

Unplug the garage door opener. Disconnect the battery (if applicable).

1. Connect the wires to the back of the door control.
2. Secure the door control to the wall.
3. Connect the wires to the garage door opener.

Plug in the garage door opener and reconnect the battery. The command LED on the door control will blink if installed correctly. To synchronize the garage door opener and the door control, press the push bar up to 3 times, until the garage door opener activates.



When the garage door opener needs to be serviced (approximately 4500 garage door opener cycles) the command and service LEDs will alternately blink back and forth. Factory default is OFF.

Turn ON/OFF: Press and hold the LEARN button. Then press the LIGHT button. The service LED will blink the status; ON is 2 blinks and OFF is 3 blinks.

LIGHT

Press the LIGHT button to turn the garage door opener lights on or off. The LIGHT button will not control the lights when the door is in motion. When the lights are turned on they will stay on until the LIGHT button is pressed again, or until the garage door opener is activated. Once the garage door opener is activated the lights will turn off after a specified period of time (see below).

TO CHANGE THE AMOUNT OF TIME THE GARAGE DOOR OPENER LIGHTS WILL STAY ON

Press and hold the LOCK button until the garage door opener lights flash (about 10 seconds). The garage door opener lights will flash up to 4 times to indicate current setting:

1 Flash = Lights stay on 1 ½ minutes

2 Flashes = Lights stay on 2 ½ minutes

3 Flashes = Lights stay on 3 ½ minutes

4 Flashes = Lights stay on 4 ½ minutes (factory default)

Repeat the steps above until your desired time frame is reached.

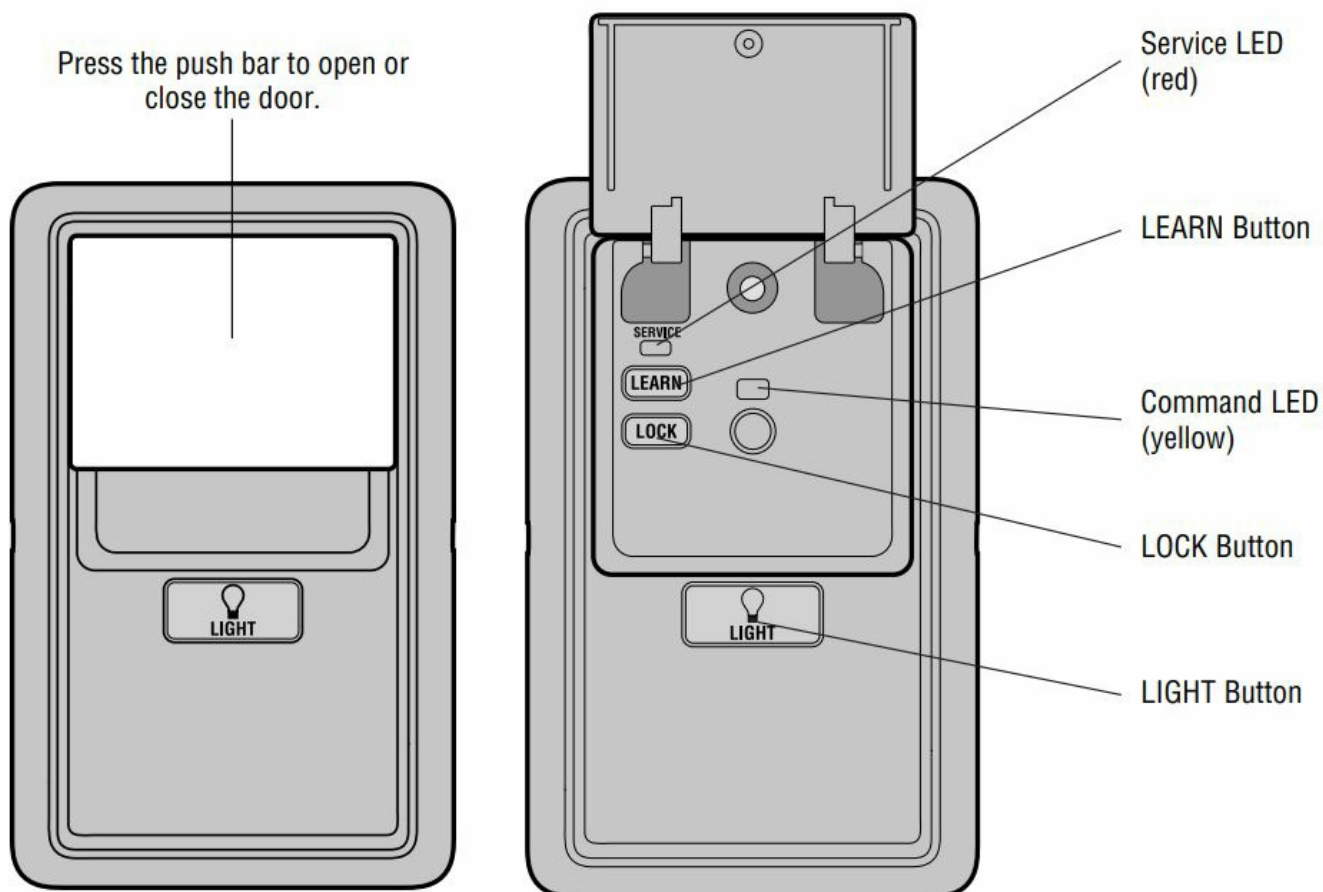
LIGHT FEATURE FOR THE SAFETY REVERSING SENSORS

The garage door opener lights will turn on when the safety reversing sensor beam is interrupted. Factory default is ON.

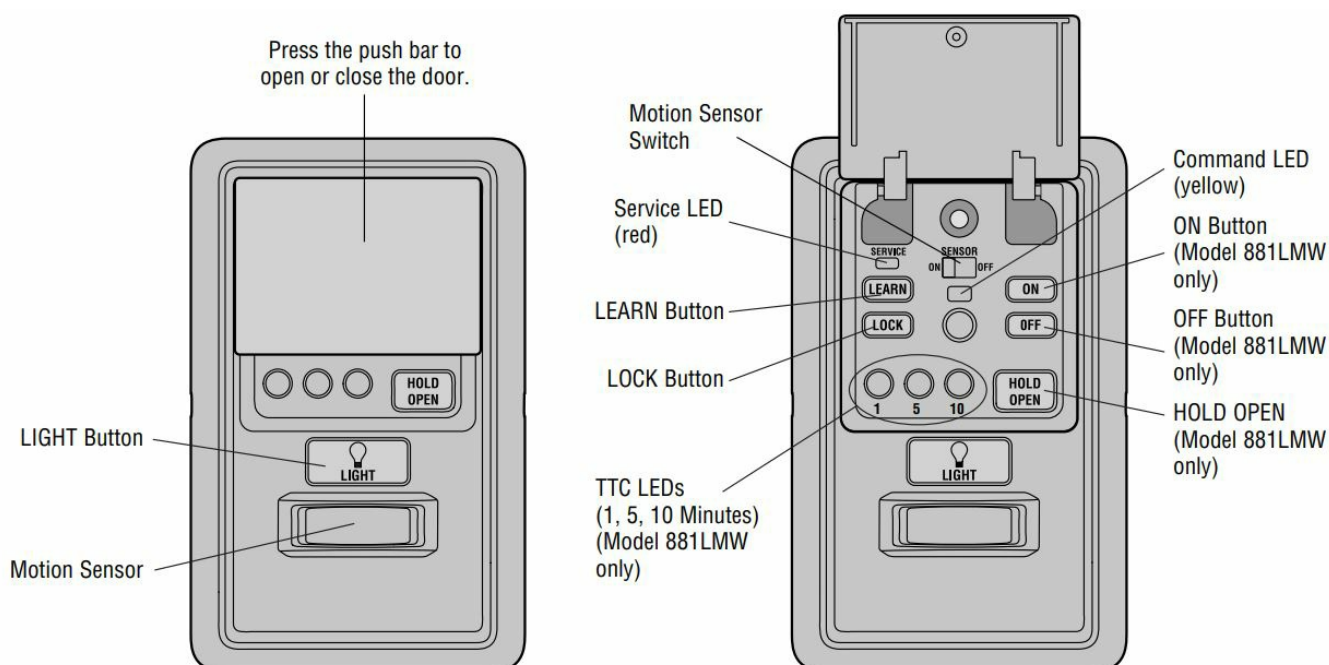
Turn ON: Start with the garage door opener lights on. Press and hold the LIGHT button to turn off the light, continue to hold until the light turns on (about 10 seconds).

Turn OFF: Start with the garage door opener lights off. Press and hold the LIGHT button to turn on the light, continue to hold until the light turns off (about 10 seconds).

MODEL 882LMW



MODELS 881LMW AND 886LMW



TIMER-TO-CLOSE (TTC)

(for model 881LMW ONLY)

DO NOT enable TTC if operating a one-piece door. TTC is to be used ONLY with sectional doors. The TTC can be set to automatically close your garage door after a specified period of time (1, 5, or 10 minute intervals). Once the TTC has been set and the door is open, the selected close interval will blink and begin to count down to close the door. The garage door opener will beep and the lights will flash before closing the door. This feature is NOT

intended to be the primary method of closing the door. **A keyless entry should be installed in the event of an accidental lock out when using this feature.**

Turn ON: Press and hold the ON button until one of the TTC LEDs light up.

Change the TTC Time Intervals: Press the ON button a second time to cycle through the time interval options (the corresponding TTC LED will light for each time interval). The garage door opener light bulbs will blink as confirmation.

Temporarily suspend the TTC: Press and release the HOLD OPEN button. Press and release the HOLD OPEN button again to resume normal TTC operation.

Turn OFF: Press and hold the OFF button until all TTC LEDs turn off and a beep is heard from the garage door opener.

The TTC WILL NOT work under the following conditions:

- If the door encounters an obstruction while closing, the garage door opener will make a second attempt to close the door. If the obstruction has not been cleared after the second attempt, the garage door opener will reverse open, stop and WILL NOT close until the obstruction has been cleared.
- If the safety reversing sensors are incorrectly installed or misaligned the garage door will reverse open and WILL NOT close until the safety reversing sensors are correctly installed and aligned. When the safety reversing sensors have been aligned, the door will close when the garage door opener is activated.
- If the garage door opener is operating by battery power the TTC will not work.

NOTE: If you have an 880LMW installed and the TTC is set to a custom time, the 3 LED's on the 881LMW will blink. If the 3 LED's are blinking and you have an 881LMW ONLY, press the ON button to set the time properly.

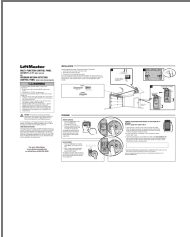
ONE YEAR LIMITED WARRANTY

LiftMaster warrants to the first consumer purchaser of this product that it is free from defect in materials and/or workmanship for a period of 1 year from the date of purchase.




NOTICE: To comply with FCC and or Industry Canada rules (IC), adjustment or modifications of this receiver and/or transmitter are prohibited, except for changing the code setting or replacing the battery. THERE ARE NO OTHER USER SERVICEABLE PARTS. Tested to Comply with FCC Standards for Home or office use. Operation is subject to the following two conditions: (1) this device may not cause harmful interference, and (2) this device must accept any interference received, including interference that may cause undesired operation.

This Class B digital apparatus complies with Canadian ICES-003.

For more information: www.devancocanada.com or call toll free at [855-931-3334](tel:855-931-3334)

	<p><u>LiftMaster 881LMW Multi Function Control Panel and Premium Motion Detecting Control Panel</u> [pdf] Installation Guide</p> <p>881LMW, 882LMW, 886LMW, 881LMW Multi Function Control Panel and Premium Motion Detecting Control Panel, 881LMW, Multi Function Control Panel and Premium Motion Detecting Control Panel, Control Panel and Premium Motion Detecting Control Panel, Premium Motion Detecting Control Panel, Motion Detecting Control Panel, Detecting Control Panel, Control Panel</p>
--	---

References

-  setup.myqdevice.com
-  [How to Set Up myQ | LiftMaster](#)
-  P65Warnings.ca.gov
- [User Manual](#)

[Manuals+.](#) [Privacy Policy](#)

This website is an independent publication and is neither affiliated with nor endorsed by any of the trademark owners. The "Bluetooth®" word mark and logos are registered trademarks owned by Bluetooth SIG, Inc. The "Wi-Fi®" word mark and logos are registered trademarks owned by the Wi-Fi Alliance. Any use of these marks on this website does not imply any affiliation with or endorsement.