



LiftMaster 811LMX Single Button Programmable DIP Remote Instruction Manual

[Home](#) » [LiftMaster](#) » LiftMaster 811LMX Single Button Programmable DIP Remote Instruction Manual

Contents [[hide](#)]

- [1 LiftMaster 811LMX Single Button Programmable DIP Remote](#)
- [2 Introduction](#)
- [3 Programming](#)
- [4 The Remote Control Battery](#)
- [5 Replacement Parts](#)
- [6 Documents / Resources](#)
- [7 Related Posts](#)



LiftMaster 811LMX Single Button Programmable DIP Remote



Introduction

The 811LMX and 813LMX are programmable DIP switch remote controls for use with LiftMaster commercial products using Security+ 2.0® Encrypted DIP, as well as older 315 MHz DIP or 390 MHz DIP devices. The remote control default setting is Security+ 2.0®. The 813LMX model is designed for OPEN/ CLOSE/STOP functionality. The images throughout this manual are for reference only and your product may look different.



811LMX



813LMX

To prevent possible serious injury or death from a moving gate or garage door:

- ALWAYS keep remote controls out of reach of children. NEVER permit children to operate, or play with remote control transmitters.
- Activate gate or door ONLY when it can be seen clearly, is properly adjusted, and there are no obstructions to door travel.
- ALWAYS keep gate or garage door in sight until completely closed. Never permit anyone to cross path of moving gate or door.

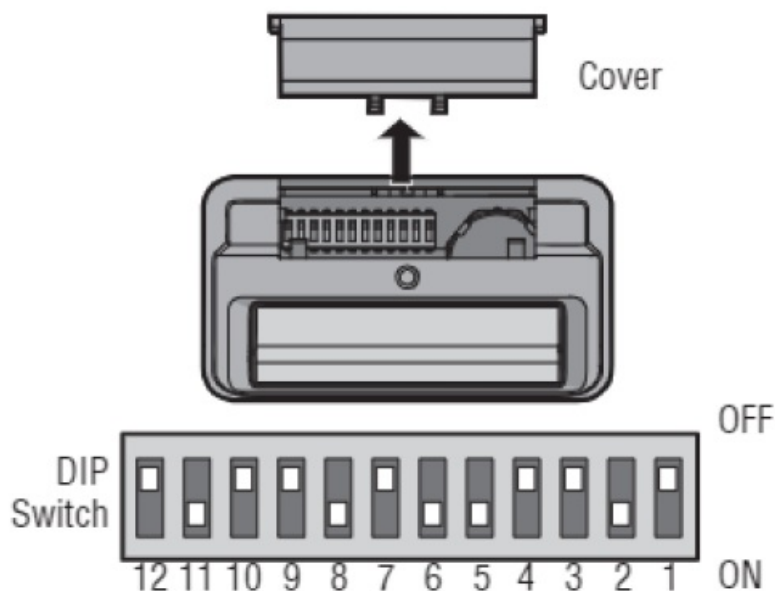
WARNING: This product can expose you to chemicals including lead, which are known to the State of California to cause cancer or birth defects or other reproductive harm. For more information go to www.P65Warnings.ca.gov.

Programming

Step 1: Set the DIP Switches

1. Slide the cover open to access the DIP switches.
2. Use a pen or screwdriver to slide the DIP switches to any position you want (ON or OFF).

NOTE: If you are 'matching' the DIP switch setting from an existing 61LM or 361LM, your original remote setting cannot be using ANY of the center 0' settings and Position 1 must be in the OFF position. If your original remote does have any 0' settings or Position 1 in the ON position, please select a new DIP setting on your 811LMX and program it into your commercial receiver. Any future 811LMX remotes will copy this setting and will be programmed to the appropriate Security Type.



Step 2: Select the Security Type

NOTE: If the device you use with this remote is Security+ 2.0° Encrypted DIP, skip this step and go to Step 3: Program the Remote to a Device. Follow these steps to select 315 MHz DIP, 390 MHz DIP or to reset the remote to Security+ 2.0 Encrypted DIP from a different setting.

1. Locate and press the Program Button. The LED glows steady Yellow.

Step 3: Program the Remote to a Device

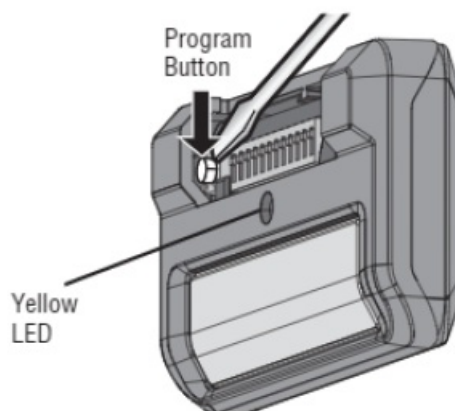
See your LiftMaster device's manual for programming.

1. Press and release the LEARN button on your device.
2. Within 30 seconds press and hold the button on the remote control that you wish to program to the device.
3. Test by pressing the remote button you just programmed. The operator or gate activates.

Additional buttons on the 813LMX can be programmed to operate other devices of the same security type.

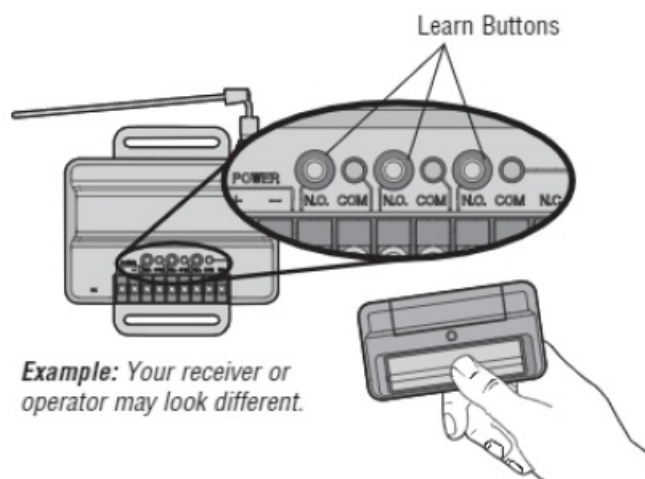
Open, Close, Stop

The 813LMX can be programmed for OPEN/ CLOSE/STOP functionality. Refer to your device manual for instructions.



The Remote Control Battery

The lithium battery should produce power for up to 3 years. To replace battery:



WARNING

To prevent possible **SERIOUS INJURY** or **DEATH**:

- NEVER allow small children near batteries.
- If battery is swallowed, immediately notify doctor.
- To reduce risk of fire, explosion or chemical burn:
- Replace **ONLY** with 3V CR2032 coin batteries.
- DO NOT recharge, disassemble, heat above 212°F (100°C) or incinerate.

Replacement Parts

- Visor Clip. KO29B0137
- 3V CR2032 lithium Battery KO10A0020

Documents / Resources

	<p>LiftMaster 811LMX Single Button Programmable DIP Remote [pdf] Instruction Manual 811LMX, Single Button Programmable DIP Remote, 811LMX Single Button Programmable DI P Remote, Button Programmable DIP Remote, Programmable DIP Remote, DIP Remote, Rem ote</p>
--	--