



LiftMaster 371LM Single Button Remote Control Instruction Manual

[Home](#) » [LiftMaster](#) » LiftMaster 371LM Single Button Remote Control Instruction Manual 

Contents

- [1 LiftMaster 371LM Single Button Remote Control](#)
- [2 PROGRAMMING THE REMOTE CONTROL](#)
- [3 TO CONTROL THE GARAGE DOOR OPENER LIGHTS](#)
- [4 TO ERASE ALL CODES FROM MEMORY](#)
- [5 THE REMOTE CONTROL BATTERY](#)
- [6 HOW TO USE THE REMOTE CONTROL](#)
- [7 3-BUTTON REMOTE CONTROLS](#)
- [8 REPLACEMENT PARTS](#)
- [9 ONE YEAR LIMITED WARRANTY](#)
- [10 Documents / Resources](#)
 - [10.1 References](#)
- [11 Related Posts](#)

LiftMaster

LiftMaster 371LM Single Button Remote Control



For use with garage door openers, gate operators or other products that are 315 MHz Security+®. Compatible with garage door openers that have a purple learn button. The code between the remote control and the receiver changes with each use, randomly accessing over a billion new codes. Refer to your product manual for the location of the learn button.

NOTE: Your product may look different than the products illustrated in this manual.

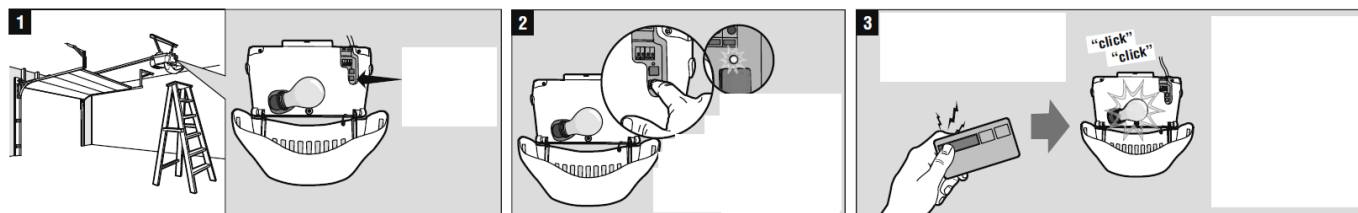
WARNING: This product can expose you to chemicals including lead, which are known to the State of California to cause cancer or birth defects or other reproductive harm. For more information go to www.P65Warnings.ca.gov

WARNING

To prevent possible SERIOUS INJURY or DEATH from a moving gate or garage door:

- ALWAYS keep remote controls out of reach of children. NEVER permit children to operate, or play with remote controls.
- Activate gate or door ONLY when it can be seen clearly, is properly adjusted, and there are no obstructions to door travel.
- ALWAYS keep gate or garage door in sight until completely closed. NEVER permit anyone to cross path of moving gate or door.

PROGRAMMING THE REMOTE CONTROL



1. Locate the Smart/Learn button

2. Press and immediately release the learn button. The learn LED will glow steadily for 30 seconds. Within 30

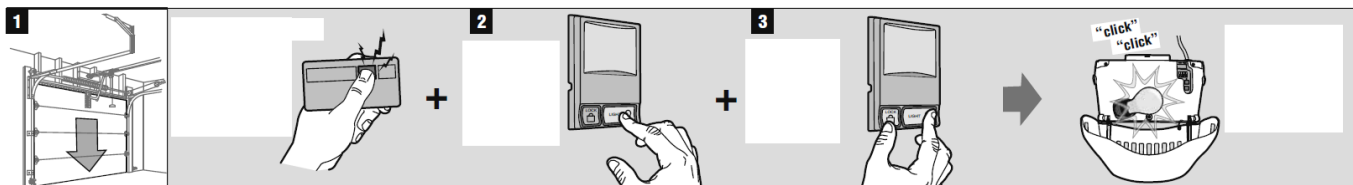
seconds...

3. Press and hold the button on the remote control that you wish to use

Release the button when the garage door opener lights blink or two clicks are heard. If programming to other products, press the button a second time to activate the product.

TO CONTROL THE GARAGE DOOR OPENER LIGHTS

This feature is only available on garage door openers equipped with a multi-function door control and a remote control with more than one button. Not available with universal receiver. With Security+® remote controls, a remote control button can be programmed to operate the garage door opener lights without opening the door.

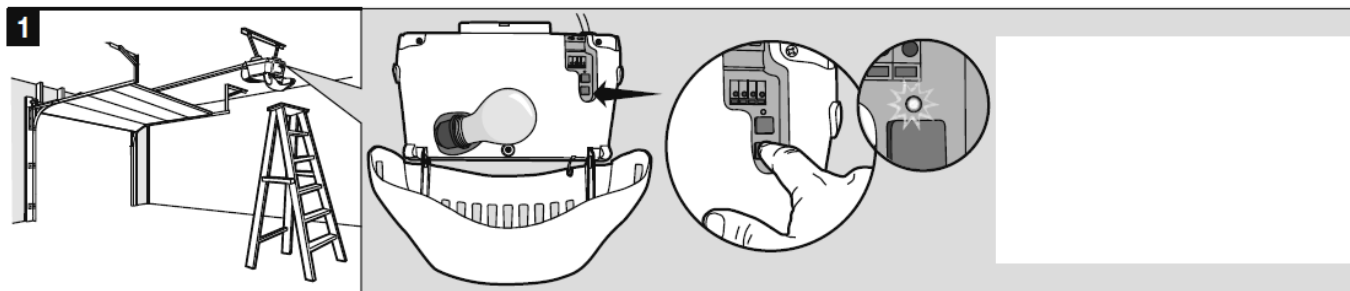


1. With the door closed, press and hold the remote control button that you want to control the light.
2. Press and hold the light button on the door control.
3. Press and hold the lock button on the door control.

After the garage door opener lights flash, release all buttons

TO ERASE ALL CODES FROM MEMORY

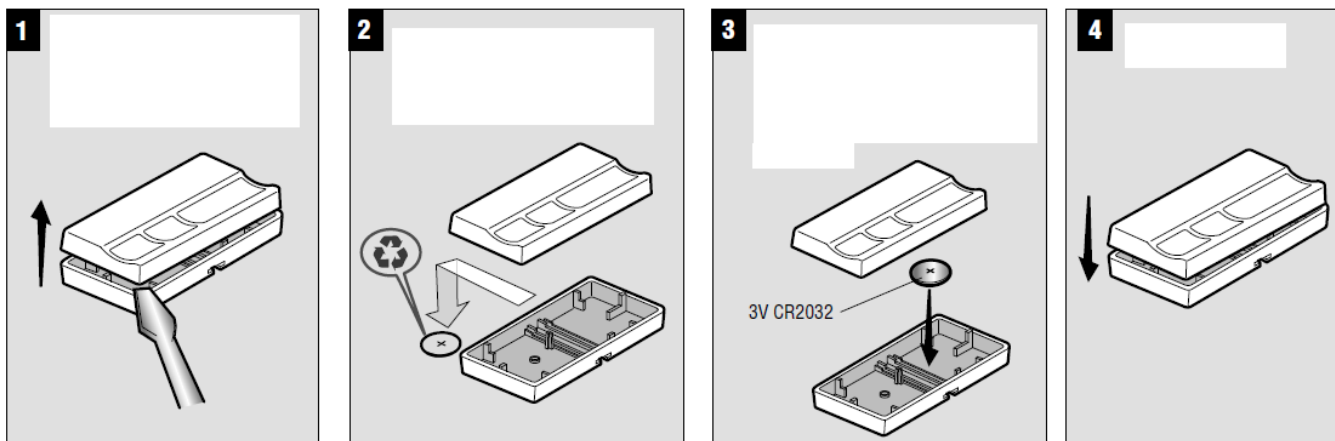
When deactivating any unwanted remote control code, all previous codes will be erased.



Press and hold the learn button on garage door opener or other product until the learn LED goes out (approximately 6 seconds). All previous codes are now erased. Reprogram each remote control you wish to use

THE REMOTE CONTROL BATTERY

The lithium battery should produce power for up to 3 years. To replace battery



1. Use the visor clip or screwdriver to pry open the cover.
2. Remove the old battery. Dispose of old batteries properly
3. Insert replacement batteries positive side up. Replace the batteries with only 3V CR2032 coin cell batteries.
4. Replace cover.

To prevent possible **SERIOUS INJURY** or **DEATH**:

- NEVER allow small children near batteries.
- If battery is swallowed, immediately notify doctor.

To reduce risk of fire, explosion or chemical burn:

- Replace **ONLY** with 3V CR2032 coin batteries.
- **DO NOT** recharge, disassemble, heat above 212°F (100°C) or incinerate.

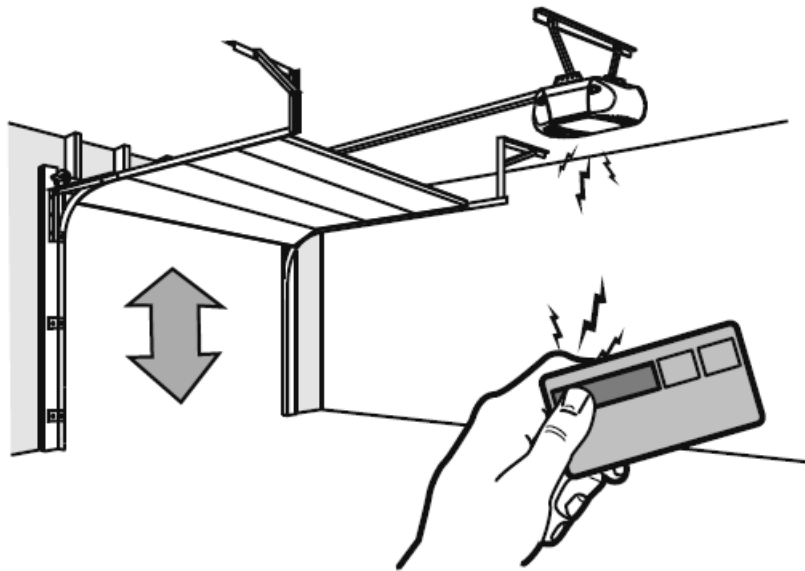
NOTICE: To comply with FCC and or Industry Canada rules (IC), adjustment or modifications of this receiver and/or transmitter are prohibited, except for changing the code setting or replacing the battery. **THERE ARE**

NO OTHER USER SERVICEABLE PARTS.

Tested to Comply with FCC Standards **FOR HOME OR OFFICE USE**. Operation is subject to the following two conditions: (1) this device may not cause harmful interference, and (2) this device must accept any interference received, including interference that may cause undesired operation.

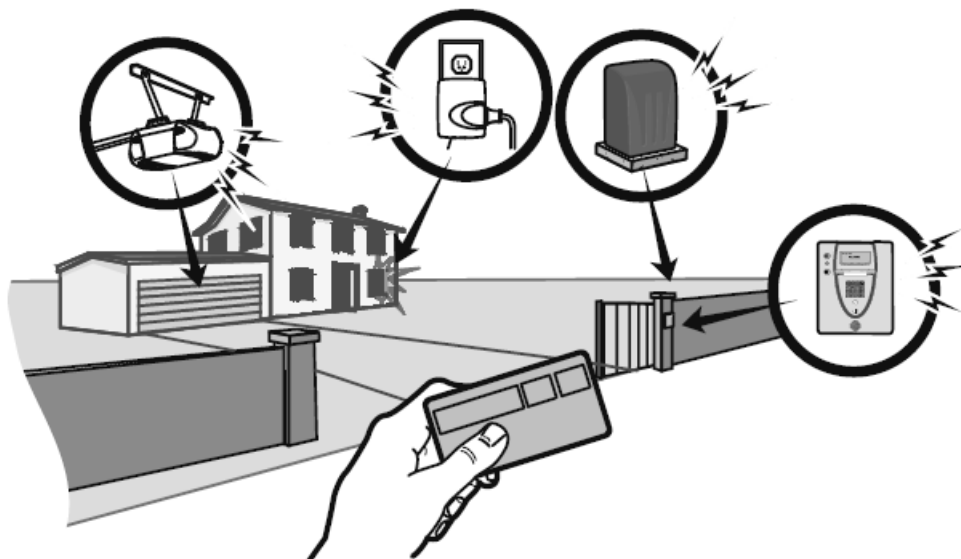
HOW TO USE THE REMOTE CONTROL

Press and hold the button down until the door or gate starts to move. The remote control will operate from up to 3 car lengths away on typical installations. Installations and conditions vary, contact an installing dealer for more information



3-BUTTON REMOTE CONTROLS

Additional buttons on any Security+® remote control or mini-remote control can be programmed to operate other Security+® garage door openers, light controls, gate operators or access control systems.



REPLACEMENT PARTS

- 3V CR2032 Lithium battery10A20
- Visor Clip (not available for mini-remote controls).29B137

ONE YEAR LIMITED WARRANTY

LiftMaster warrants to the first retail purchaser of this product that is free from defect in materials and/or workmanship for a period of 1 year from the date of purchase.

© 2016, LiftMaster All Rights Reserved Tous Droits Réservés 114A4109D

Documents / Resources



[LiftMaster 371LM Single Button Remote Control](#) [pdf] Instruction Manual
371LM, Single Button Remote Control, 371LM Single Button Remote Control, Remote Control

References

- [P65Warnings.ca.gov](https://www.p65warnings.ca.gov/)

Manuals+.