



LiChuanShiCai H2 Wireless Bluetooth Headset with Microphone User Manual

[Home](#) » [LiChuanShiCai](#) » LiChuanShiCai H2 Wireless Bluetooth Headset with Microphone User Manual 

LiChuanShiCai H2 Wireless Bluetooth Headset with Microphone



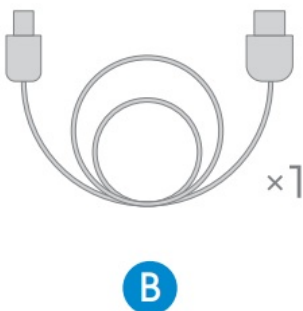
Contents

- 1 Package List
- 2 Headset Overview
- 3 Wearing and Adjusting
- 4 Pairing
- 5 Pairing
- 6 Power On/Off
- 7 Phone Call Control
- 8 Music
- 9 Resetting
- 10 Charging The Headset
- 11 Specification
- 12 Safety
- 13 FAQ
- 14 Q: How to reconnect and what to do if fails?
- 15 Q: How to delete the paired record?
- 16 Q: What is the password for pairing?
- 17 Q: What devices can charge the headset?
- 18 Q: What should I do if there is a connection problem or dead?
- 19 Q: Why did my headset automatically shut down?
 - 19.1 Warning
 - 19.2 Documents / Resources
 - 19.3 Related Posts

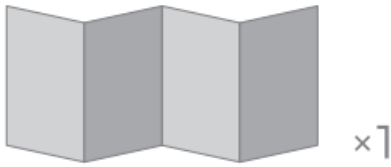
Package List



A. Wireless Headset



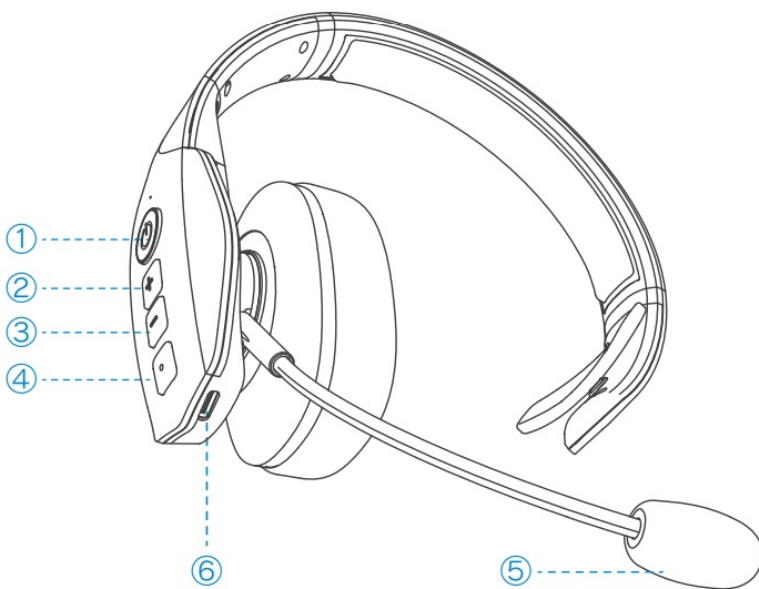
B. Type-C USB Cable



C. User Manual

If any questions are not answered in the manual, please check the product description on Amazon (FAQ at the product listing bottom), or contact our store customer service team through the Amazon platform, we will reply within 24 hours.

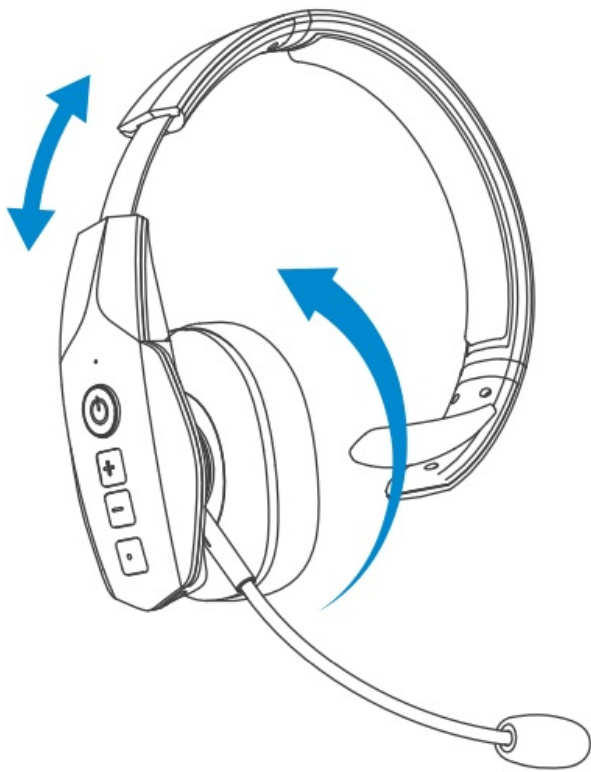
Headset Overview



- ①MFB Button/Indicator Light
- ②Volume + Button
- ③Volume – Button
- ④Mute Button
- ⑤Microphone
- ⑥Type-C Charging Port

Wearing and Adjusting

1. Place the headset on your head so that one side of the ear muff is on your ear and the other side T-Pad is above your ear.
2. You can slide the headband to find the best size to wear.
3. You can bend the microphone boom to place the microphone about one finger's width away from your face at the corner of your mouth.



NOTE:

The microphone boom supports 270°rotation so that you can place the headset on either ear.

Pairing

How to Pairing

1. Press and hold on the MFB Button to power on, a voice prompt “Power on, Pairing” with the indicator light flashes blue 3 times, then flashes blue-red alternately to enter pairing mode.
2. Turn on the Bluetooth on your phone, search and click the “H2”, a voice prompt “Connected” with the indicator light off.



NOTE:

- **a** .After the headset is disconnected from the phone, it will automatically enter the pairing mode, indicator light alternately flashing blue-red and shut down after 5 minutes without any device connected.
- **b** .When there is a pairing record, just power on, and the headset will automatically connect to the phone.

Pairing

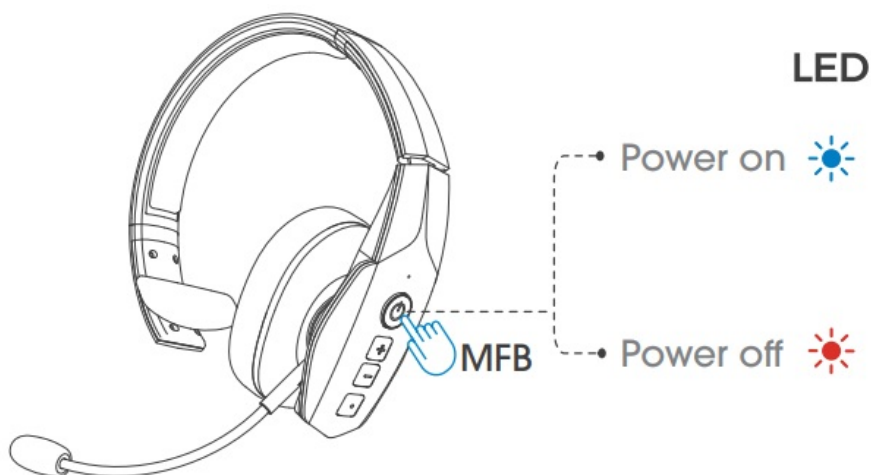
Open the Bluetooth of the first device and the second device, search and click “H2”, when the two devices prompted “connected” means that both devices are connected successfully.

NOTE:

When the first device is listening song and the second device has an incoming call, it will be prioritized to answer the call.



Power On/Off



Power on: Press MFB Button for 3 seconds, and the indicator light flashes blue 3 times with a voice prompt “Power on”.

Power off: Press MFB Button for 6 seconds, and the indicator light flashes red 3 times with a voice prompt “Power off”.

Phone Call Control

- **Answer/End Calls:**

Press once the MFB Button.

- **Reject Calls:**

Press the MFB Button for 1 second.

- **Redial Calls:**

Double-press the MFB Button.

- **Mute/ Unmute:**

Press once the Mute Button.

- **Voice Dialing/Siri:**

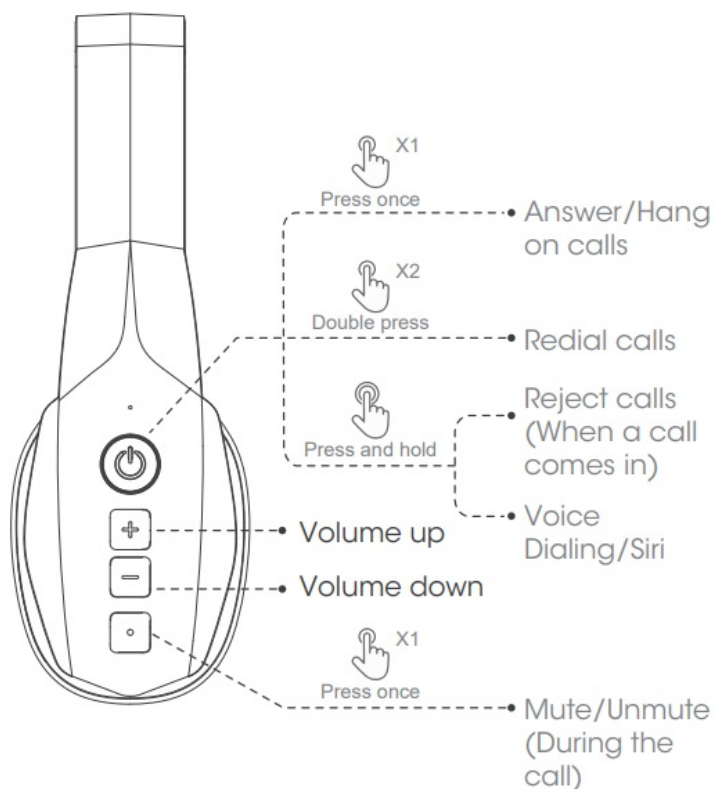
Press the Mute Button for 1 second.

- **Volume up:**

Press once the “Volume +” button.

- **Volume down:**

Press once the “Volume -” button.



Music

- **Play/Pause:**

Press once the MFB Button.

- **Volume up:**

Press once the “Volume +” button.

- **Volume down:**

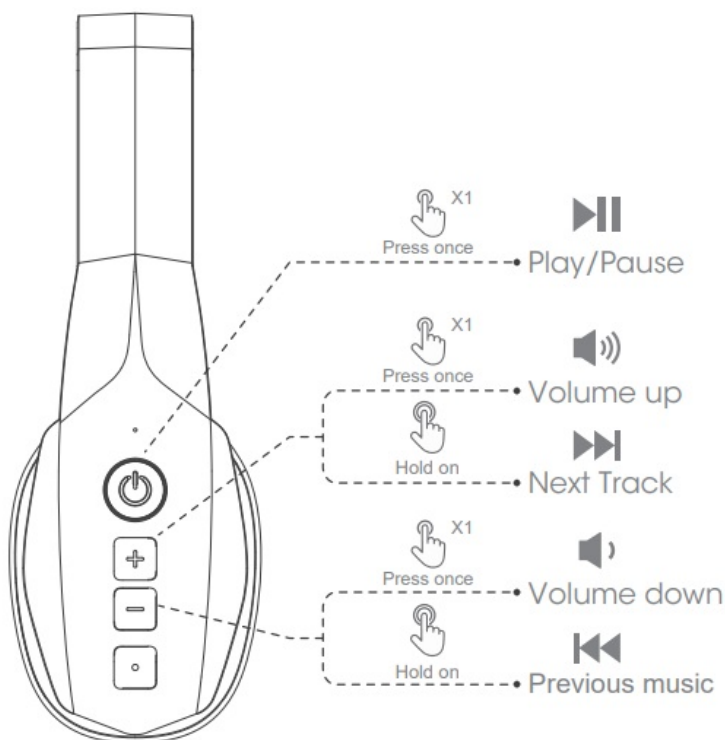
Press once the “Volume -” button.

- **Next Track:**

Press the “Volume +” button for 1 second.

- **Previous Track:**

Press the “Volume -” button for 1 second.



Resetting

1. In the H2 power-on state, press the MFB Button five times in a row, it will automatically shut down after a successful reset, with a voice prompt “power off” and the indicator light flashes red 3 times.
2. Delete the Bluetooth pairing record “H2” of the headset on the original cell phone, then turn off Bluetooth.
3. After 10 seconds, repeat the “pairing” procedure.



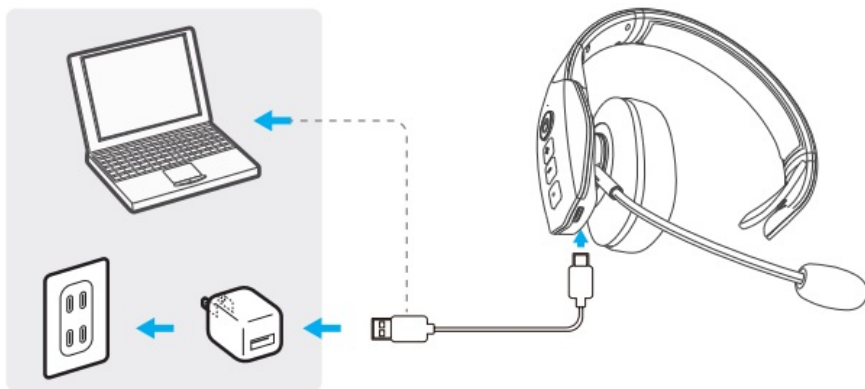
Charging The Headset

Use the Type-C charging cable(provided) to connect your computer(with power on) or an adapter(not provided) to the headset. The indicator light will stay red when charging and stay blue after fully charging.

NOTE:

1. When the power level is too low, there will be a voice prompt “Low Battery, Please Charge” every 3 minutes with the indicator flashing red every 5 seconds.

2. When the power level down to 3.0V, the indicator light flashes red 3 times and the headset shut down.



Specification

Model:	H2
Version:	V5.2
Transmission Distance:	33feet/10 meters(open space)
Supporting Protocols:	HSP HFP A2DP AVRCP
Battery Capacity:	1000mAh
Talk Time:	About 90 Hours
Using Time:	About 150 Hours
Charging Time:	About 1-1.5 Hours
Item Size:	175.12*174.6*60mm
Item Weight:	About 166g

Safety

IMPORTANT SAFETY NOTE: Prolonged exposure to high volume levels could damage your hearing. To avoid injury, please set the volume to the lowest comfortable level. If you experience ringing in your ears, or voices sound muffled, stop using the headset. Avoid turning up the volume to block noisy surroundings. It's possible for your ears to adapt to the volume that is too high, and this could result in permanent hearing damage without any noticeable discomfort.

- Check with local and state laws regarding cell phone/headset usage while operating a motor vehicle.
- Do not immerse any part of this product in water.
- Plastic bags and small parts may cause choking if ingested.
Keep them away from small children and pets.
- Avoid temperatures exceeding 60°C (140°F) (It will cause equipment failure).

FAQ

Q: How to reconnect and what to do if fails?

A: When H2 is successfully connected to your phone for the first time, it will automatically search and reconnect the paired device after powering on. If it fails, please re-pair and connect. H2 would reconnect within 5 minutes if more than 5 minutes will be turned off.

Q: How to delete the paired record?

A: Press the MFB Button five times in a row to clear the pairing record. After deletion, H2 will not connect to the device automatically.

Q: What is the password for pairing?

A: Some connected devices need the password for pairing, please try 0000 or 8888 or 1111 or 1234.

Q: What devices can charge the headset?

A: Any car charger, portable charger, computer, etc. that meets DC 5V and has a charging current greater than 500mA can charge the H2.

Q: What should I do if there is a connection problem or dead?

A: Please try charging reset, the operation method: plug in the charging cable charging, the headset reset to the off state, the power on can be used normally if still can not be used normally, you can seek technical support from us at Amazon.

Q: Why did my headset automatically shut down?

A: If more than 5 minutes without connecting any device, or the battery voltage is lower than 3.0V, H2 will automatically shut down.

Warning

This device complies with Part 15 of the FCC Rules. Operation is subject to the following two conditions: (1) this device may not cause harmful interference, and (2) this device must accept any interference received, including interference that may cause undesired operation.

Changes or modifications not expressly approved by the party responsible for compliance could void the user's authority to operate the equipment. NOTE: This equipment has been tested and found to comply with the limits for a Class B digital device, pursuant to Part 15 of the FCC Rules. These limits are designed to provide reasonable protection against harmful interference in a residential installation. This equipment generates, uses and can radiate radio frequency energy and, if not installed and used in accordance with the instructions, may cause harmful interference to radio communications. However, there is no guarantee that interference will not occur in a particular installation.


If this equipment does cause harmful interference to radio or television reception which can be determined by turning the equipment off and on, the user is encouraged to try to correct the interference by one or more of the following measures:

- Reorient or relocate the receiving antenna.
- Increase the separation between the equipment and receiver
- Connect the equipment into an outlet on a circuit different from that to which the receiver is connected.
- Consult the dealer or an experienced radio/TV technician for help

NOTE: This device and its antenna(s) must not be co-located or operation in conjunction with any other antenna or transmitter. The device has been evaluated to meet general RF exposure requirement. The device can be used in portable exposure condition without restriction.



Documents / Resources

 <p>Use Manual</p>	<p>LiChuanShiCai H2 Wireless Bluetooth Headset with Microphone [pdf] User Manual 2BCQ9-H2, 2BCQ9H2, H2, H2 Wireless Bluetooth Headset with Microphone, Wireless Bluetooth Headset with Microphone, Bluetooth Headset with Microphone, Headset with Microp hone, Microphone</p>
--	---