



Libratone Classic Loop Wi-Fi/Bluetooth User Manua

[Home](#) » [Support](#) » Libratone Classic Loop Wi-Fi/Bluetooth User Manua 

Contents

- [1 Libratone Classic Loop Wi-Fi/Bluetooth](#)
- [2 QUICK GUIDE LIBRATONE LOOP](#)
- [3 CUSTOMIZE YOUR AUDIO EXPERIENCE WITH THE LIBRATONE APP](#)
- [4 QUICK AIRPLAY SETUP](#)
- [5 QUICK BLUETOOTH SETUP](#)
- [6 QUICK DLNA SETUP](#)
- [7 DOWNLOAD](#)
- [8 Related Posts](#)

Libratone Classic Loop Wi-Fi/Bluetooth

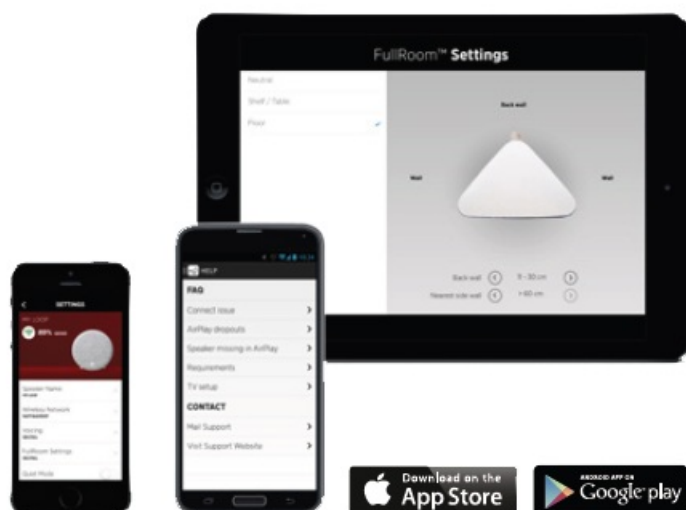


USER MANUAL

QUICK GUIDE LIBRATONE LOOP

AIRPLAY
BLUETOOTH
DLNA

CUSTOMIZE YOUR AUDIO EXPERIENCE WITH THE LIBRATONE APP



QUICK AIRPLAY SETUP

iOS 7 or later

Full manual and warranty sheet on libratone.com

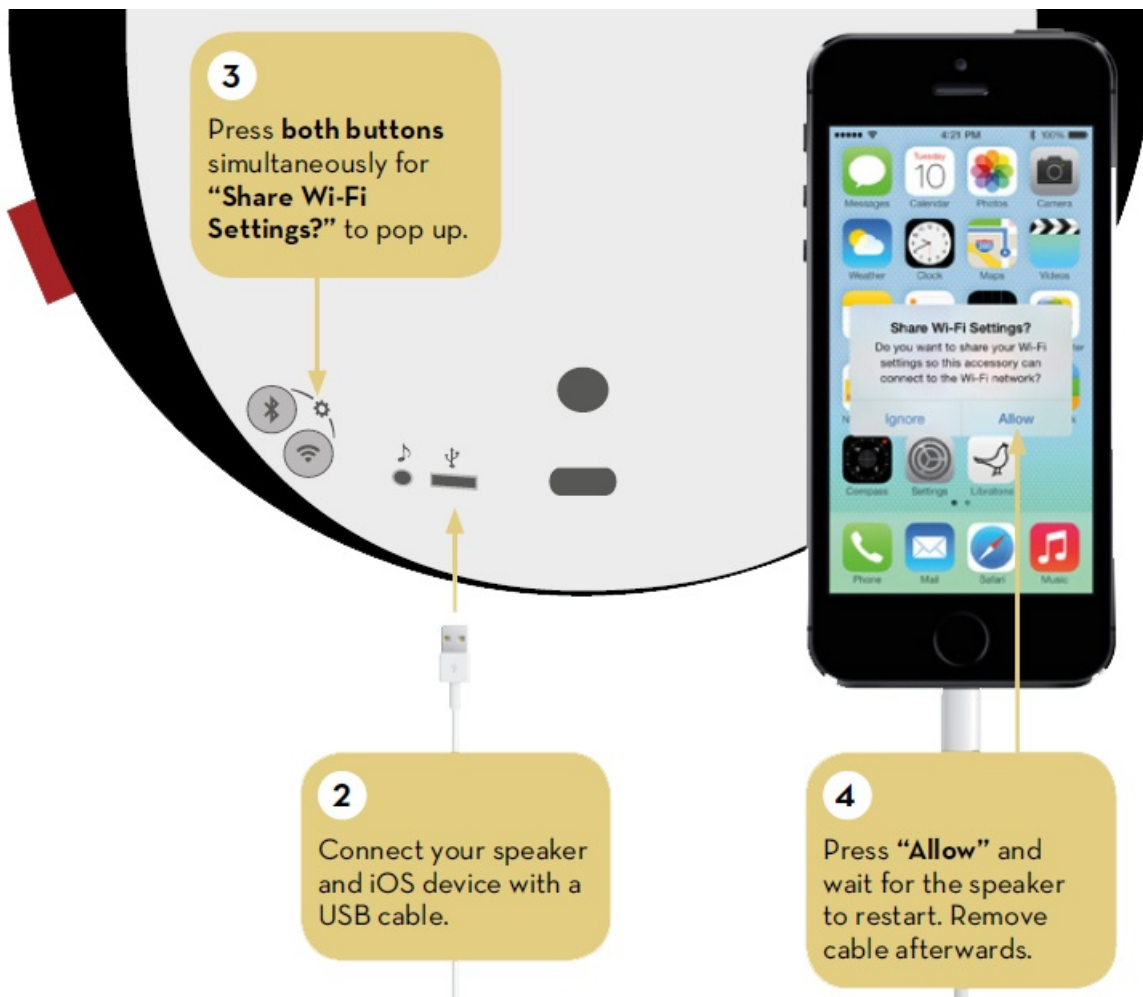
1. Press the Logo Button to turn speaker on.



2. Connect your speaker and iOS device with a USB cable.

3. Press both buttons simultaneously for “Share Wi-Fi Settings?” to pop up.

4. Press “Allow” and wait for the speaker to restart. Remove cable afterwards.



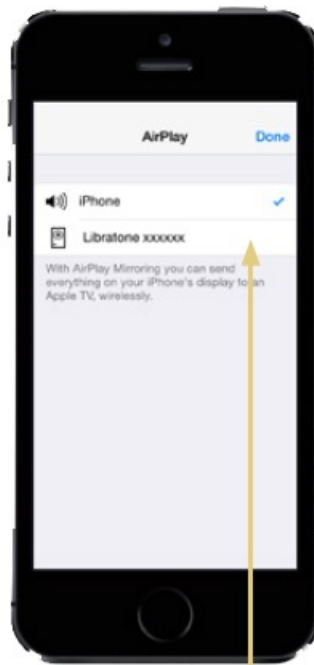
5. Swipe up from the bottom of the display to enter “Control Center” and press “AirPlay”.

6. Choose your speaker.



5

Swipe up from the bottom of the display to enter “**Control Center**” and press “**AirPlay**”.



6

Choose your speaker.

7. Choose your favorite music player and set your music free!



7

Choose your favorite music player and set your music free!



FREE COVER

Register your speaker on libratone.com/freecover and get a **free cover** in your favorite color.

FREE COVER

Register your speaker on libratone.com/freecover and get a free cover in your favorite color.

AirPlay is a trademark of Apple Inc., registered in the US and other countries

QUICK BLUETOOTH SETUP

Bluetooth® devices

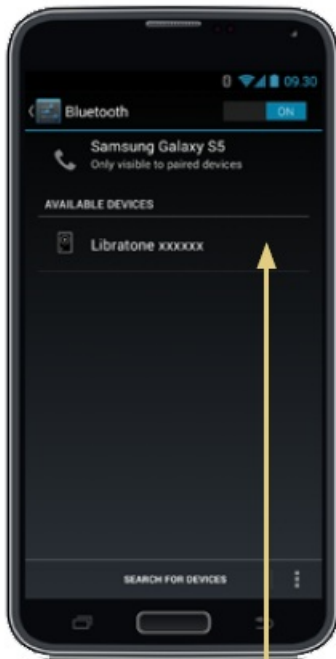
Full manual and warranty sheet on libratone.com

1. Press the Logo Button to turn speaker on.
2. Press and hold the Bluetooth Button for two seconds until the Logo Button emits a blue sequence.
3. Unlock your NFC (Near Field Communication) phone or tablet and hover over the Logo Button ...



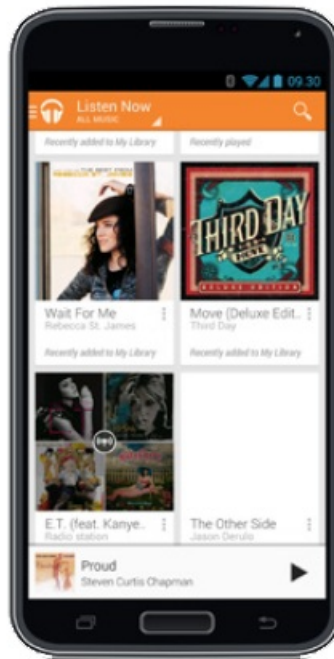
4. ... OR connect to the speaker through the "Bluetooth settings" menu.

5. Choose your favorite music player and set your music free!



4

... OR connect to the speaker through the **"Bluetooth settings"** menu.



5

Choose your favorite music player and set your music free!

FREE COVER

Register your speaker on libratone.com/freecover and get a free cover in your favorite color.



FREE COVER

Register your speaker on
libratone.com/freecover
and get a **free cover** in
your favorite color.

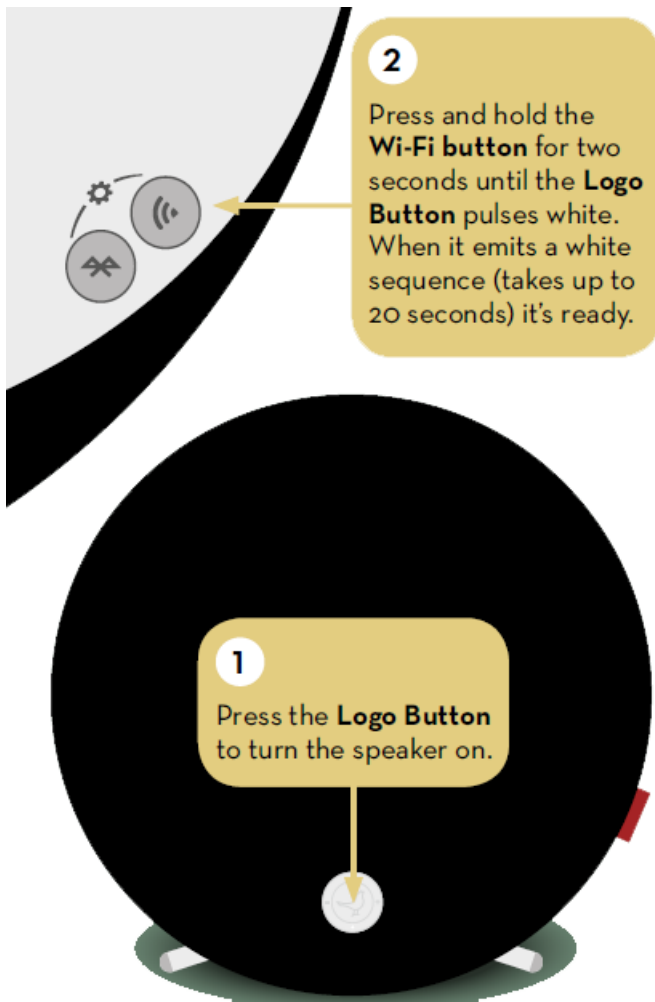
The Bluetooth® word mark and logos are owned by the Bluetooth SIG, Inc. and any use of such marks by Libratone A/S is under license.

QUICK DLNA SETUP

Android / PC

Full manual and warranty sheet on libratone.com

1. Press the Logo Button to turn the speaker on.
2. Press and hold the Wi-Fi button for two seconds until the Logo Button pulses white.
When it emits a white sequence (takes up to 20 seconds) it's ready.



3. Open “Wi-Fi settings” and connect to the speaker’s network.

4. Open a browser and type “192.168.1.1” and follow the Wi-Fi setup instructions.



3

Open **“Wi-Fi settings”** and connect to the speaker’s network.

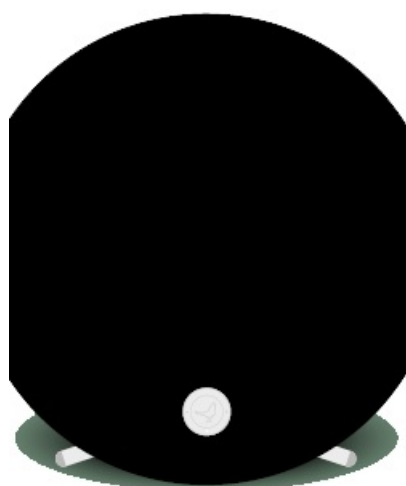


4

Open a browser and type “192.168.1.1” and follow the Wi-Fi setup instructions.

5. Wait for your speaker to restart. The Logo Button breathes white when ready.

6. Open a DLNA Music Player. Select your speaker and press play to set your music free.



5

Wait for your speaker to restart. The **Logo Button** breathes white when ready.

6

Open a DLNA Music Player. Select your speaker and press play to set your music free.



FREE COVER

Register your speaker on libratone.com/freecover and get a **free cover** in your favorite color.

FREE COVER

Register your speaker on libratone.com/freecover and get a free cover in your favorite color.

DOWNLOAD

Libratone Classic Loop Wi-Fi/Bluetooth Quick Start Guide – [[Download PDF](#)]

Libratone Classic Loop Wi-Fi/Bluetooth Owner's Guide – [[Download PDF](#)]
