

LIAN LI RF-R-INF-B4 Wireless SL Infinity Uni Fan Installation Guide

September 4,
2025



Contents [[hide](#)]

1

UNI FAN SL INFINITY WIRELESS 120

1.1

Installation guide

1.1.1

Package Contents

1.1.2

Fan to Fan Connection

1.1.3

Fan cable connect

2

Documents / Resources

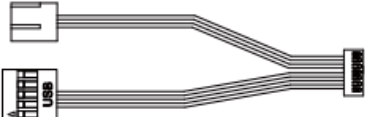

2.1

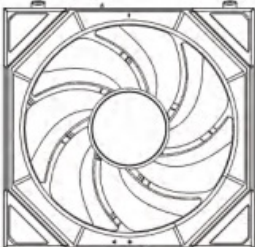


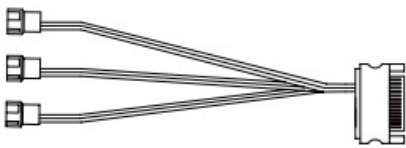
References

UNI FAN SL INFINITY WIRELESS 120

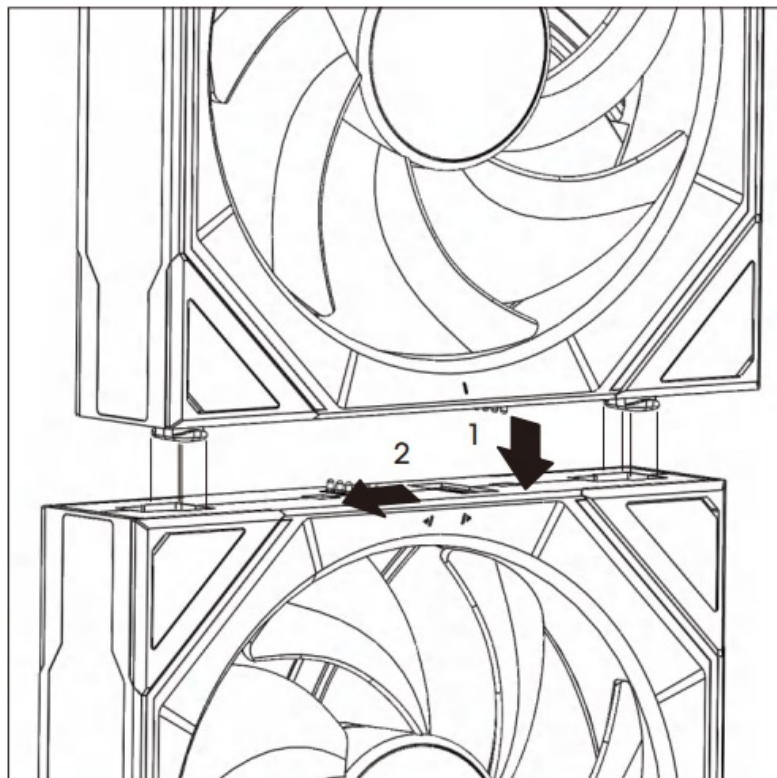
Installation guide

Package Contents

	<div></div> <div>x 1</div>
--	---

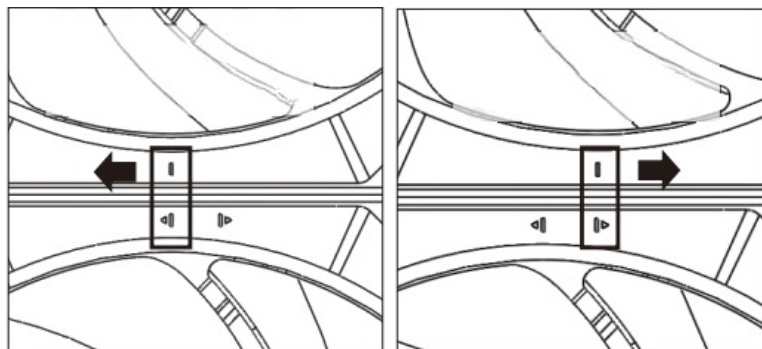
		x 1
 x 12	 x 1	x 1

Fan to Fan Connection

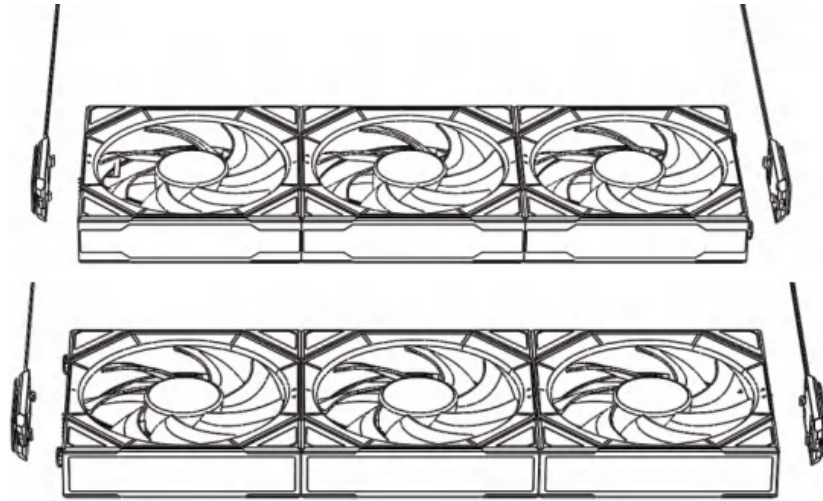


Secure

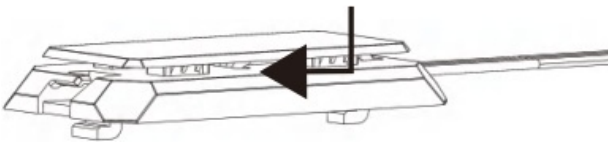
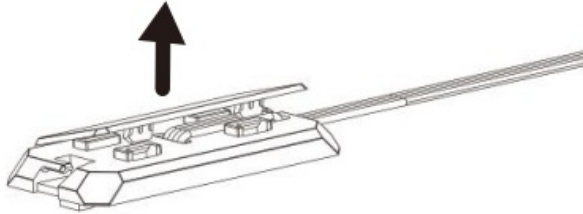
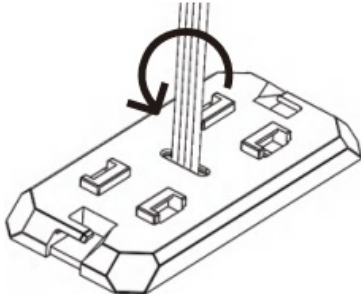
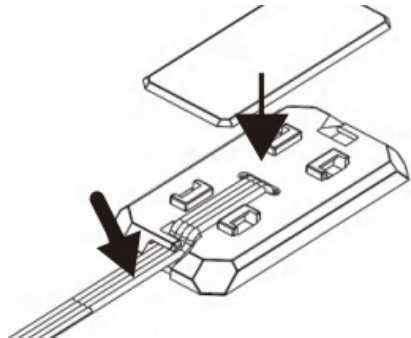
Release



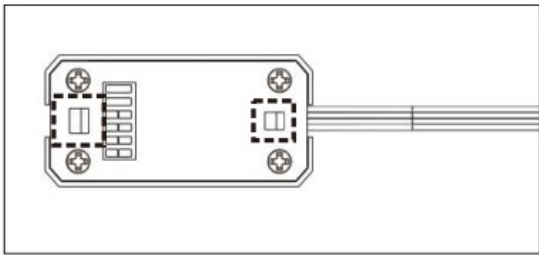
To accommodate different fan side designs, the wireless receiver allows cable output on both sides



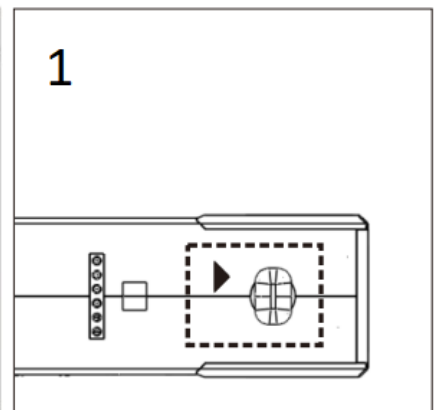
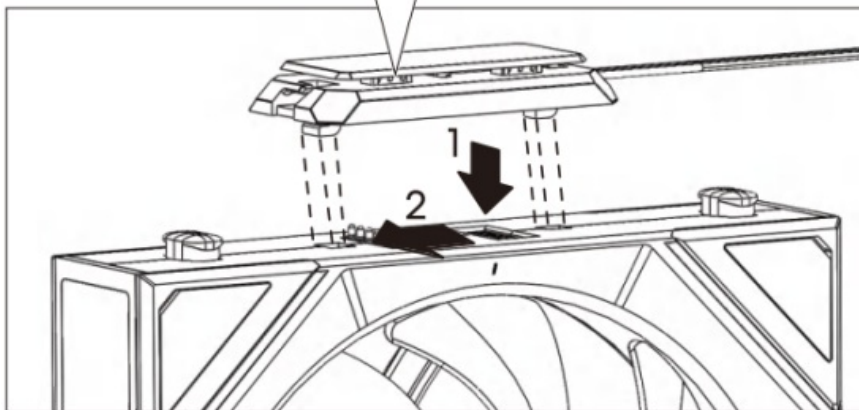
Switch the cable orientation on the L-Wireless Receiver/Charge

<p>Lift the cover from one side</p>  <p>1</p>	<p>Release</p>  <p>2</p>
<p>Switch orientation</p>  <p>3</p>	<p>Secure</p>  <p>4</p>

L-Wireless Receiver Installation/Installation

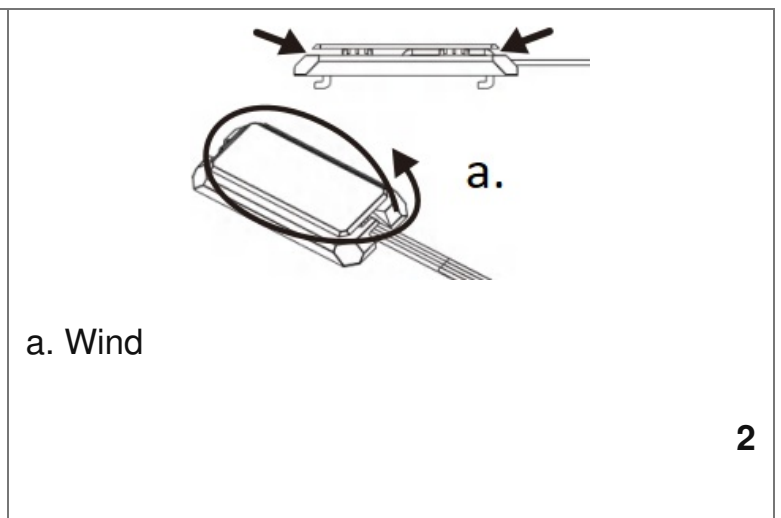
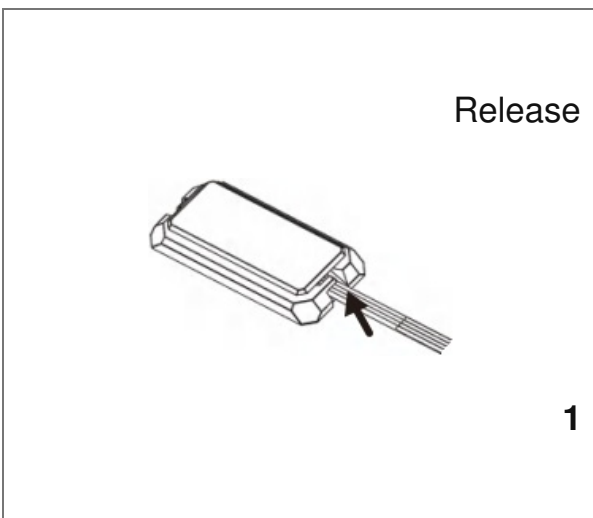


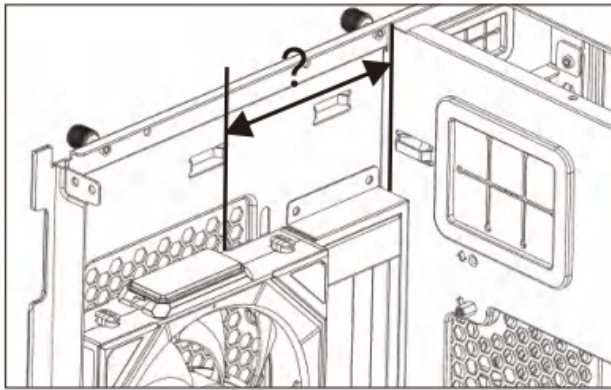
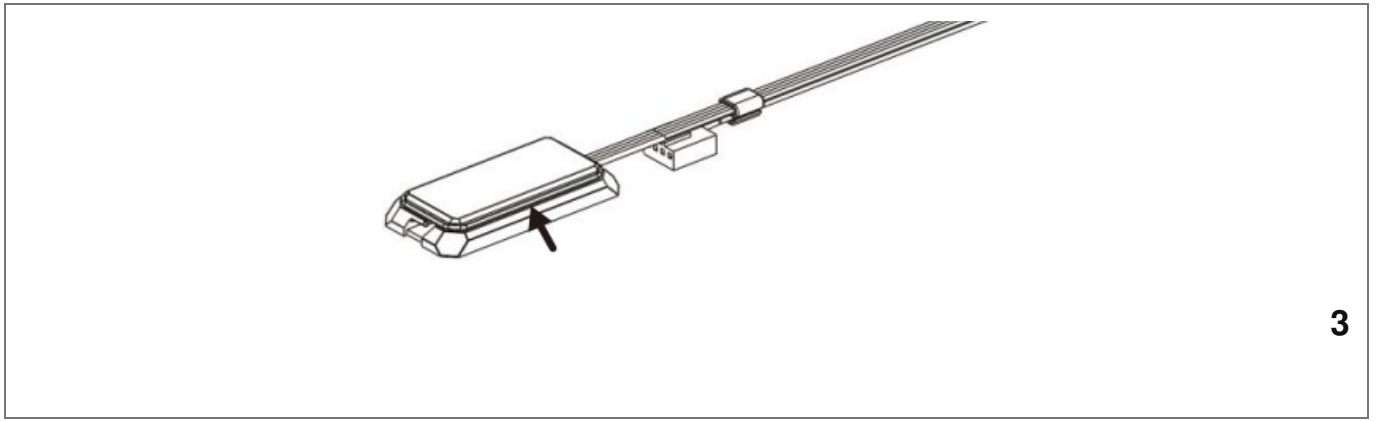
! The sockets for the power module are different in size, so please be mindful of the direction when installing



1. Secure direction

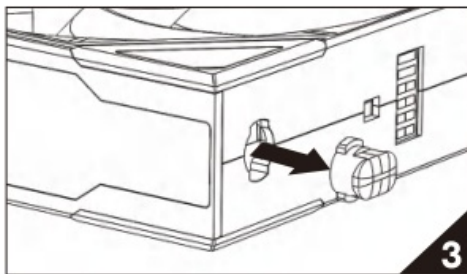
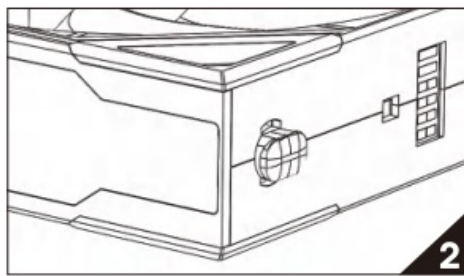
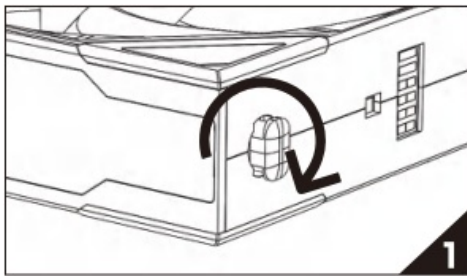
Cable Organize (Shorten)





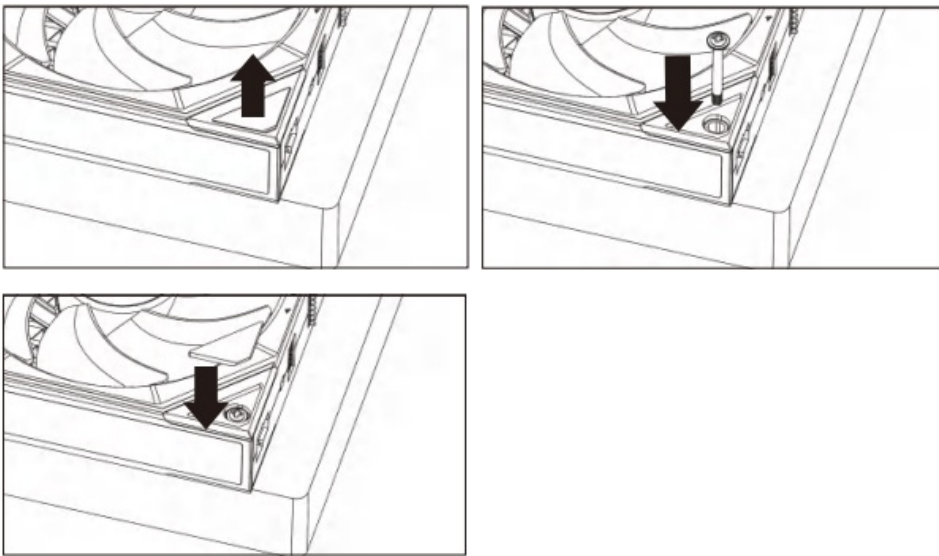
Measure the length needed

Remove the Fan Interlocking Key



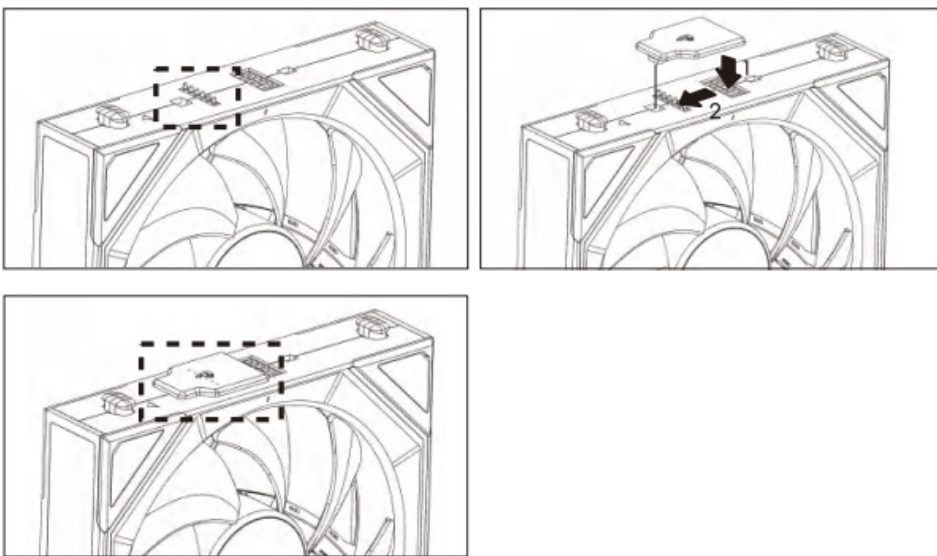
If the radiator outlet interferes with the fan interlocking key, you can remove them

Usage of the Rubber pads



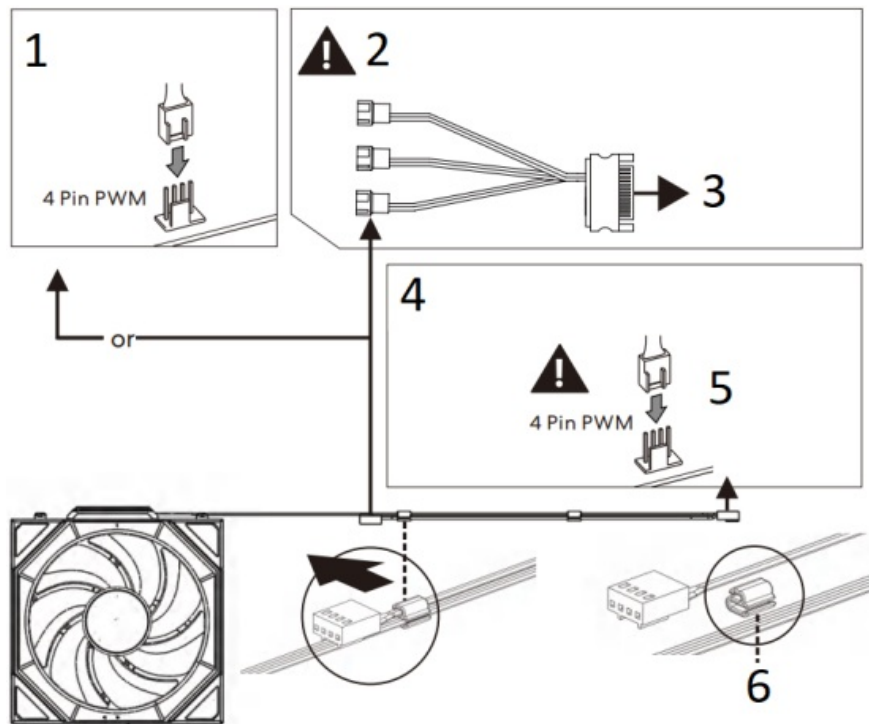
Secure the fan to the radiator and cover with the rubber pads to enhance the overall aesthetics

Usage of the Pin Cover



Exposed POGO PIN terminals can easily short-circuit metal components if touched accidentally. It is recommended to cover with pin cover for protection

Fan cable connect



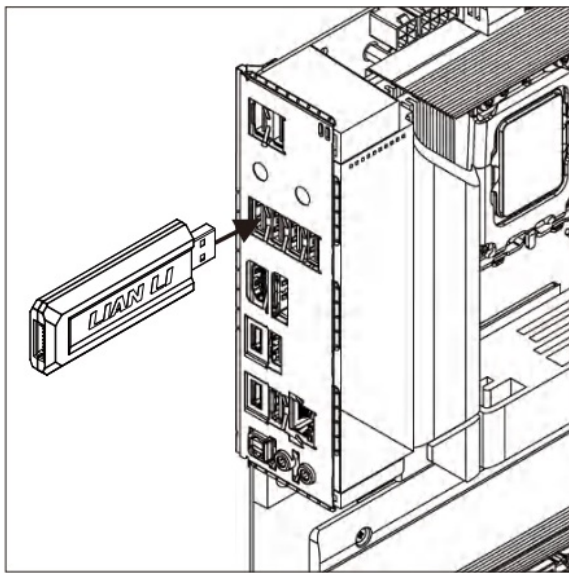
! When using the wireless receiver, each daisy-chain supports up to 4 fans

1. Connect to PWM fan header
2. If connecting 2 or more fans in a daisy chain, the second PWM fan header must be connected to the motherboard or a SATA adapter cable for stable power delivery
3. Connect to PSU SATA 15 pin
4. Connect to the motherboard to read and control fan speed
5. Connect to PWM fan header
- 6.

The plastic cable clip has a large and small side

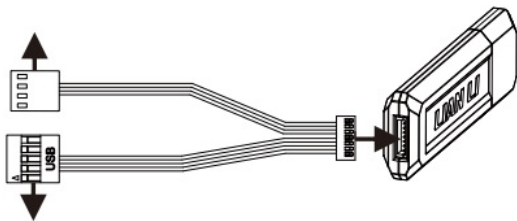
L-Wireless Controller Installation

Method 1



Method 2

Connect to PWM fan header



Connect to MB USB 2.0 header

! Each L-Wireless Controller supports 10 channel of device

FCC Caution.

This device complies with part 15 of the FCC Rules. Operation is subject to the following two conditions: (1) This device may not cause harmful interference, and (2) this device must accept any interference received, including interference that may cause undesired operation.

Any Changes or modifications not expressly approved by the party responsible for compliance could void the user's authority to operate the equipment.

Note: This equipment has been tested and found to comply with the limits for a Class B digital device, pursuant to part 15 of the FCC Rules. These limits are designed to provide reasonable protection against harmful interference in a residential installation.

This equipment generates uses and can radiate radio frequency energy and, if not installed and used in accordance with the instructions, may cause harmful interference to radio communications. However, there is no guarantee that interference will not occur in a particular installation. If this equipment does cause harmful interference to radio or television reception, which can be determined by turning the equipment off and on, the user is encouraged to try to correct the interference by one or more of the following measures:

- Reorient or relocate the receiving antenna.
- Increase the separation between the equipment and receiver.
- Connect the equipment into an outlet on a circuit different from that to which the receiver is connected.
- Consult the dealer or an experienced radio/TV technician for help.

*RF warning for Portable device:

The device has been evaluated to meet general RF exposure requirement. The device can be used in portable exposure condition without restriction.

2.4g wireless spec : frequency 2402-2480MHz

Transmition : Below 10mw

Manufacturer: LIAN LI INDUSTRIAL CO., LTD.



Please scan the QR code for important safety instructions and warnings.

Read carefully before use to ensure proper handling and safety.

G50.12SLIN1W3B(W).01

Documents / Resources



[LIAN LI RF-R-INF-B4 Wireless SI Infinity Uni Fan \[pdf\]](#) Installation Guide
RF-R-INF-B4, RF-R-INF-B4 Wireless SI Infinity Uni Fan, Wireless SI
Infinity Uni Fan, SI Infinity Uni Fan, Infinity Uni Fan, Uni Fan

References

- [User Manual](#)

LIAN

LI

Leave a comment

Your email address will not be published. Required fields are marked *

Comment *

Name

Email

Website

☐ Save my name, email, and website in this browser for the next time I comment.

Post Comment

Search:

e.g. whirlpool wrf535swhz

Search

[Manuals+](#) | [Upload](#) | [Deep Search](#) | [Privacy Policy](#) | [@manuals.plus](#) | [YouTube](#)

This website is an independent publication and is neither affiliated with nor endorsed by any of the trademark owners. The "Bluetooth®" word mark and logos are registered trademarks owned by Bluetooth SIG, Inc. The "Wi-Fi®" word mark and logos are registered trademarks owned by the Wi-Fi Alliance. Any use of these marks on this website does not imply any affiliation with or endorsement.