



**UltraGear OLED  
Computer Monitor**



## LG UltraGear OLED Computer Monitor User Guide

[Home](#) » [LG](#) » LG UltraGear OLED Computer Monitor User Guide 

### Contents

- [1 LG UltraGear OLED Computer Monitor](#)
- [2 Product Usage Instructions](#)
- [3 FAQ](#)
- [4 WHAT'S IN THE BOX](#)
- [5 TOOLS](#)
- [6 CONNECTION](#)
- [7 POWER ON](#)
- [8 Documents / Resources](#)
  - [8.1 References](#)
- [9 Related Posts](#)



**LG UltraGear OLED Computer Monitor**



## Specifications

- **Product:** OLED Computer Monitor
- **Manufacturer:** LG Electronics Inc.
- **Model:** 45GS92&
- **Copyright:** 2024
- **Website:** <https://www.lg.com/au/support/manuals>

## Product Usage Instructions

### Safety Information

- Before installation and use, please read the safety information provided in the owner's manual and regulatory info available on the LG website.

### Components

- It is recommended to use the supplied components for optimal performance and compatibility.

### Cable Usage

- Ensure to use the supplied cable with the product to prevent any malfunction. Using a DVI to HDMI / DP (DisplayPort) to HDMI cable may lead to compatibility issues.

## USB Port

- The USB port on the product functions as a USB hub, providing additional connectivity options for your devices.

## FAQ

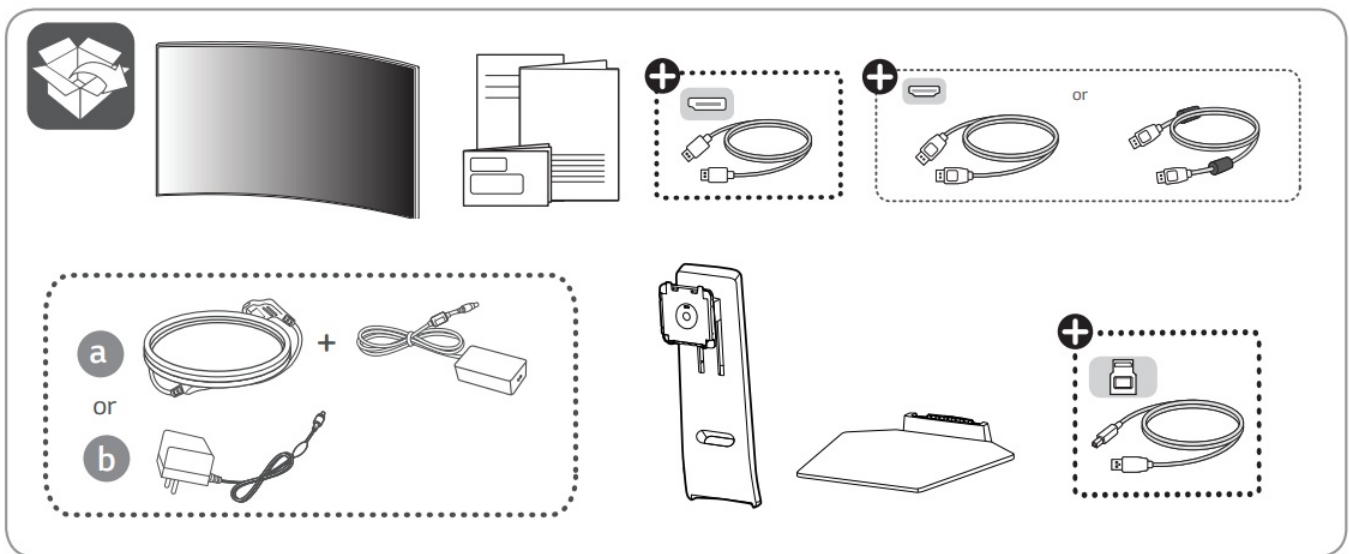
**Q: Can I use a different cable other than the supplied one?**

**A:** It is recommended to use the supplied cable to avoid any potential malfunctions or compatibility issues.

**Q: Where can I find the owner's manual and regulatory information?**

**A:** You can download the owner's manual and regulatory info from the LG website at <https://www.lg.com/au/support/manuals>.

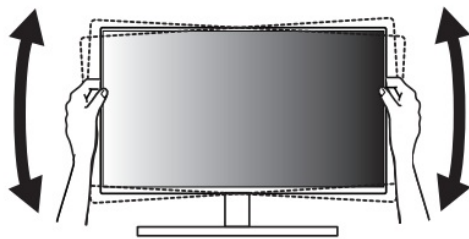
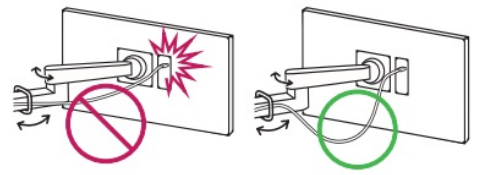
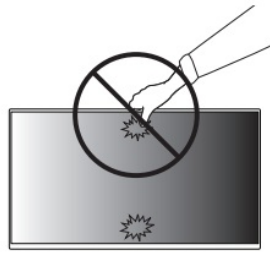
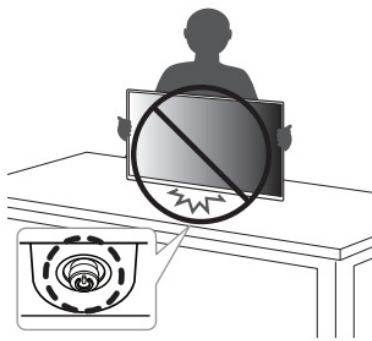
## WHAT'S IN THE BOX



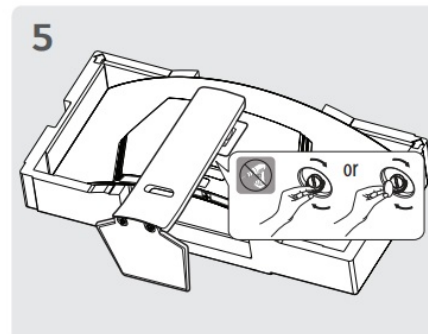
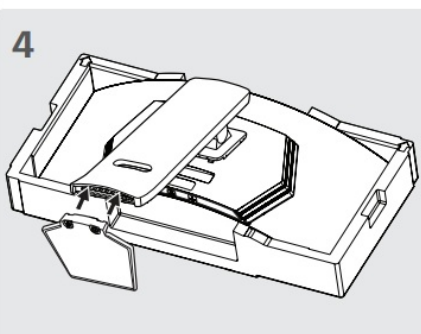
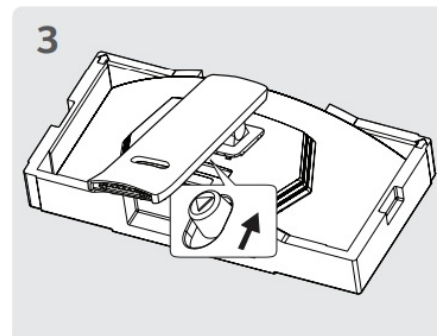
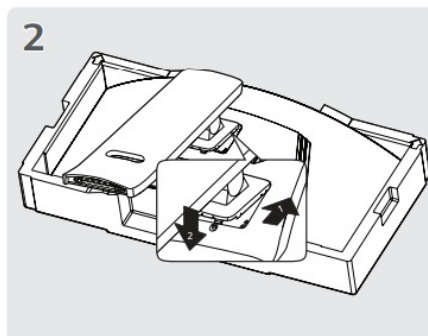
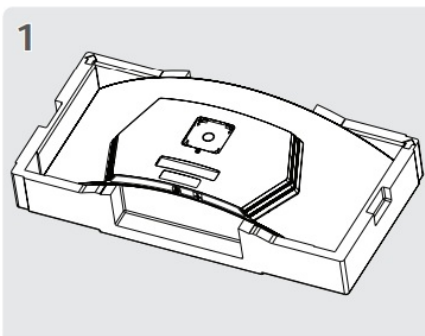
## Depending on country

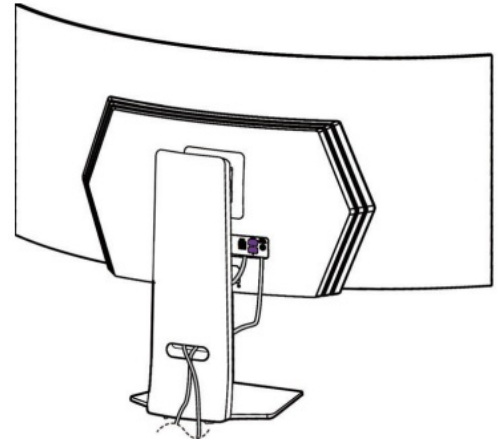
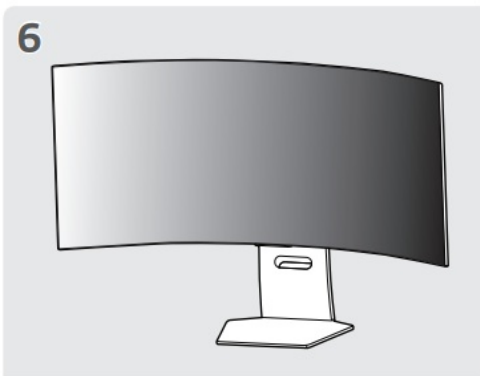
- It is recommended to use the supplied components.

## CAUTIONS

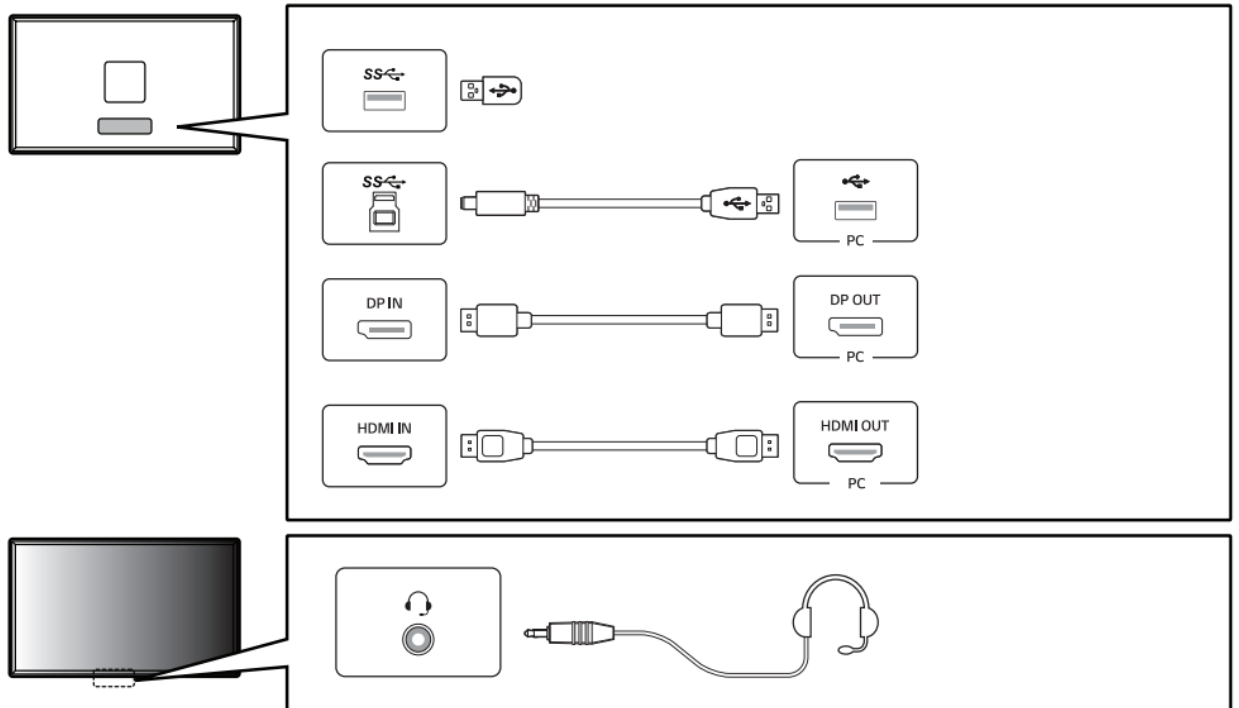


## TOOLS





## CONNECTION



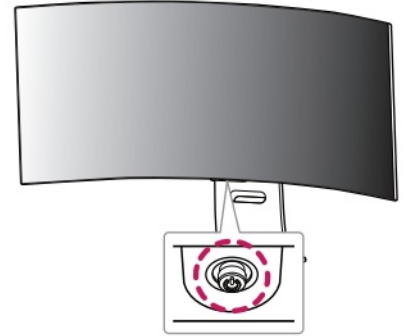
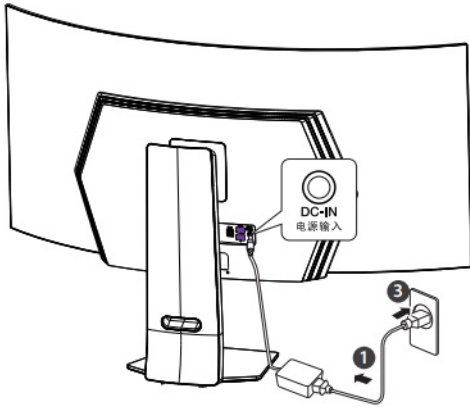
## OLED Monitor's [Image Cleaning] Function and How to Use It

- Upon initial use after opening, we recommend performing screen calibration using the [Image Cleaning] function.
- If the monitor screen is not clear, run [Image Cleaning].
- For more information, see the owner's manual.



- Using a DVI to HDMI / DP (DisplayPort) to HDMI cable may cause compatibility issues.
- The USB port on the product functions as a USB hub.
- Make sure to use the supplied cable. Otherwise, this may cause the device to malfunction.

## POWER ON



- You can download manuals from the LGE website.
- OWNER'S MANUAL AND REGULATORY INFO. are available at <https://www.lg.com/au/support/manuals>.
- PLEASE READ THE SAFETY INFORMATION BEFORE INSTALLATION AND USE. SCAN QR CODE TO ACCESS.



- [www.lg.com](http://www.lg.com)
- Copyright 2024 LG Electronics Inc. All Rights Reserved.

## Documents / Resources

	<a href="#">LG UltraGear OLED Computer Monitor</a> [pdf] User Guide MBM675635, 45GS9 2, UltraGear OLED Computer Monitor, UltraGear, OLED Computer Monitor, Computer Monitor, Monitor
--	---

## References

- [Consumer Electronics, Home & Kitchen Appliances | LG AU](#)
- [Customer Care: Product Support & Contact Info - Support & Help | LG AU](#)
- [User Manual](#)

[Manuals+.](#) [Privacy Policy](#)

This website is an independent publication and is neither affiliated with nor endorsed by any of the trademark owners. The "Bluetooth®" word mark and logos are registered trademarks owned by Bluetooth SIG, Inc. The "Wi-Fi®" word mark and logos are registered trademarks owned by the Wi-Fi Alliance. Any use of these marks on this website does not imply any affiliation with or endorsement.