

LG TLVUW3IU-N Connectivity Unit User Guide

[Home](#) » [LG](#) » LG TLVUW3IU-N Connectivity Unit User Guide 

Contents

- [1 LG TLVUW3IU-N Connectivity Unit User Guide](#)
 - [1.1 What is the OCU \(Online Connectivity Unit\)](#)
 - [1.2 Product Image/ Function](#)
 - [1.3 Specification](#)
 - [1.4 The OCU Features](#)
 - [1.5 Block Diagram](#)
- [2 Documents / Resources](#)
 - [2.1 References](#)
- [3 Related Posts](#)

LG TLVUW3IU-N Connectivity Unit User Guide

TLVUW3IU-N

(Online Connectivity Unit)



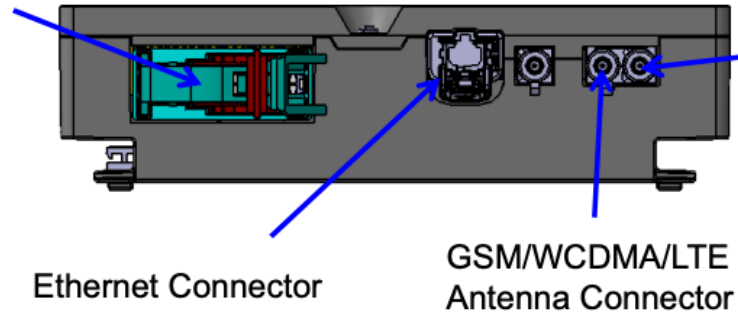
LG Electronics Inc.



What is the OCU (Online Connectivity Unit)

- The OCU stands for Online Connectivity Unit
- It's a telematics device that LGE is developing for the Volkswagen vehicles.
- It is a small box installed deep inside passenger cars, and in charge of wireless communications in GSM, WCDMA, and LTE network
- It provides voice and data call functions and various online services requested by VW

Power, CAN, Audio and other data connector



GNSS Antenna Connector

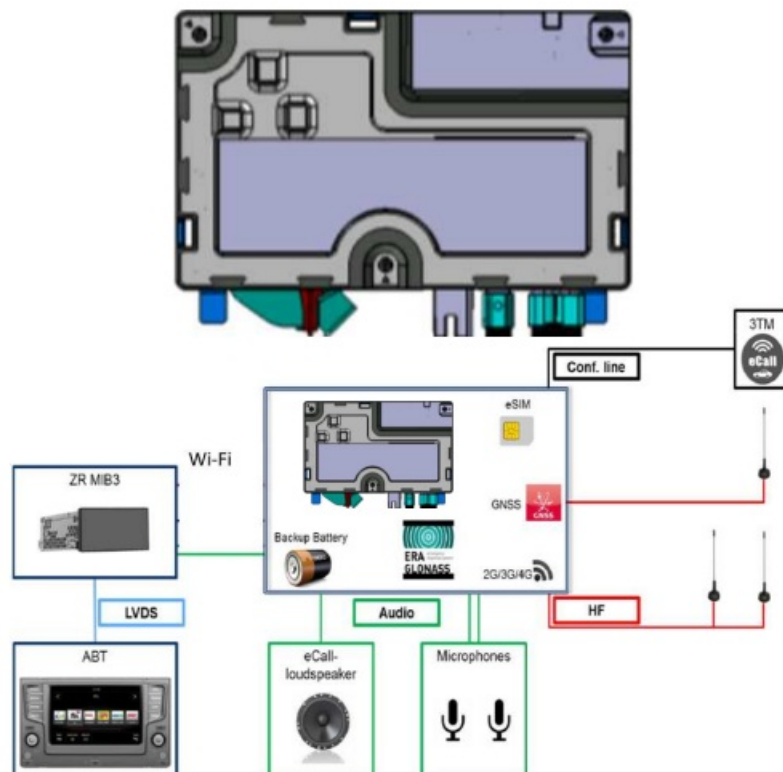
Ethernet Connector

GSM/WCDMA/LTE Antenna Connector

Product Image/ Function

Product Image

Telematics product supporting Emergency Call/LTE service



Function

- **Emergency Call**
- **Mobile Online Services**
- **Positioning/Dead Reckoning**

- GPS, GLONASS, Galileo, BeiDou and QZSS

Specification

Specification

Supporting Bands	GSM 850/1900 WCMDA B2/B4/B5 LTE FDD B2/B4/B5/B12/B13/B17
Modem Chip	Qualcomm MDM9240
GNSS	GPS, GLONASS, Galileo, BeiDou and QZSS
Bluetooth	No
WiFi	No
Size	145mm x 88mm x 38mm
Weight	333.4g
Power	DC 12V , 2A

Dimension



Major Services

- **Call Services**
 - Emergency Call
 - Automatic Collision Notification Call
 - Information Call
 - Road Side Assistance Call
- **Remote Function Services**
 - Honking And Flashing
 - Speed Alert
 - Vehicle Disabling
 - Battery Charge Management
 - Departure Time Programming
 - Door Lock / Unlock
 - Pre-Trip Climatisation
 - Trip Statistics
 - Vehicle Status
- **Geo-Fencing**
- **POI Address Import**
- **Vehicle Health Report**
- **Vehicle Tracking**

Block Diagram

Confidential

Notice

FCC

Changes or modifications not expressly approved by the party responsible for compliance could void the user's authority to operate the equipment.

This device complies with part 15 of the FCC Rules. Operation is subject to the following two conditions: (1) This device may not cause harmful interference, and (2) this device must accept any interference received, including interference that may cause undesired operation. This equipment has been tested and found to comply with the limits for a Class B digital device, pursuant to part 15 of the FCC Rules. These limits are designed to provide reasonable protection against harmful interference in a residential installation. This equipment generates uses and can radiate radio frequency energy and, if not installed and used in accordance with the instructions, may cause harmful interference to radio communications. However, there is no guarantee that interference will not occur in a particular installation. If this equipment does cause harmful interference to radio or television reception, which can be determined by turning the equipment off and on, the user is encouraged to try to correct the interference by one or more of the following measures:

- Reorient or relocate the receiving antenna.
- Increase the separation between the equipment and receiver.
- Connect the equipment into an outlet on a circuit different from that to which the receiver is connected.
- Consult the dealer or an experienced radio/TV technician for help.

This device complies with FCC radiation exposure limits set forth for an uncontrolled environment. This device should be installed and operated with minimum distance 20cm between the radiating element of this device and the user.

IC

This device complies with Industry Canada license-exempt RSS standard(s). Operation is subject to the following two conditions: (1) this device may not cause interference, and (2) this device must accept any interference, including interference that may cause undesired operation of the device.

This radio transmitter has been approved by Industry Canada to operate with the antenna types listed below with the maximum permissible gain and required antenna impedance for each antenna type indicated. Antenna types not included in this list, having a gain greater than the maximum gain indicated for that type, are strictly prohibited for use with this device. Under Industry Canada regulations, this radio transmitter may only operate using an antenna of a type and maximum (or lesser) gain approved for the transmitter by Industry Canada. To reduce potential radio interference to other users, the antenna type and its gain should be so chosen that the equivalent isotropically radiated power (e.i.r.p) is not more than that necessary for successful communication.

This device should be installed and operated with minimum distance 20cm between the radiating element of this device and the user.

	<p>LG TLVUW3IU-N Connectivity Unit [pdf] User Guide</p> <p>TLVUW3IU-N Connectivity Unit, TLVUW3IU-N, Connectivity Unit, Unit</p>
--	---

References

- [User Manual](#)