



## Owner's Manual



### Contents [ [hide](#) ]

[1 PMBD3641ZR Four Port Branch Distribution Unit](#)

[2 Documents / Resources](#)

[2.1 References](#)

## PMBD3641ZR Four Port Branch Distribution Unit

Job Name/Location: ..... Tag No:

.....

Date: .....For: ☐ File ☐ Resubmit

PO No.: ..... ☐ Approval ☐ Other .....

Architect: ..... GC:

.....

Engr: ..... Mech:

.....

Rep:.....

.....

(Company)

(Project Manager)

KNUDB091A

R32 Multi F 2 x 2 Four-Way Ceiling Cassette Indoor Unit

9,000 Btu/h

### Performance:

Max. Nominal Port Capacity (Btu/h) (each port)	Ports A, B, C: 24,000;
Max. Nominal Unit Capacity (Btu/h) (sum of ports)	Port D: 36,000
Connected Indoor Unit Capacity (Btu/h)	Ports A, B, C: 7,000 ~ 24,000;
Power Input (W)	Port D: 24,000 or 36,000
	73,000
	97

### Electrical:

Power Supply (V/Hz/Ø) <sup>1</sup>	208-230/60/1
Rated Amps (A)	0.4

### Piping:

Piping Connections to Outdoor Unit:

Liquid Line (in., O.D.)	Ø 3/8 Braze
Vapor Line (in., O.D.)	Ø 3/4 Braze

### Piping Connections to Indoor Unit:

Liquid Line (in., O.D.)	Ø1/4 Flare x 4
Vapor Line (in., O.D.)	Ø3/8 Flare x 3; Ø1/2 Flare x 1

### Features:

- Distributes refrigerant to indoor units
- Internal components are insulated
- Compact design

### Operating Range:

Temperature Range (°F D.B.)	0 ~ 150
Maximum Humidity	80%

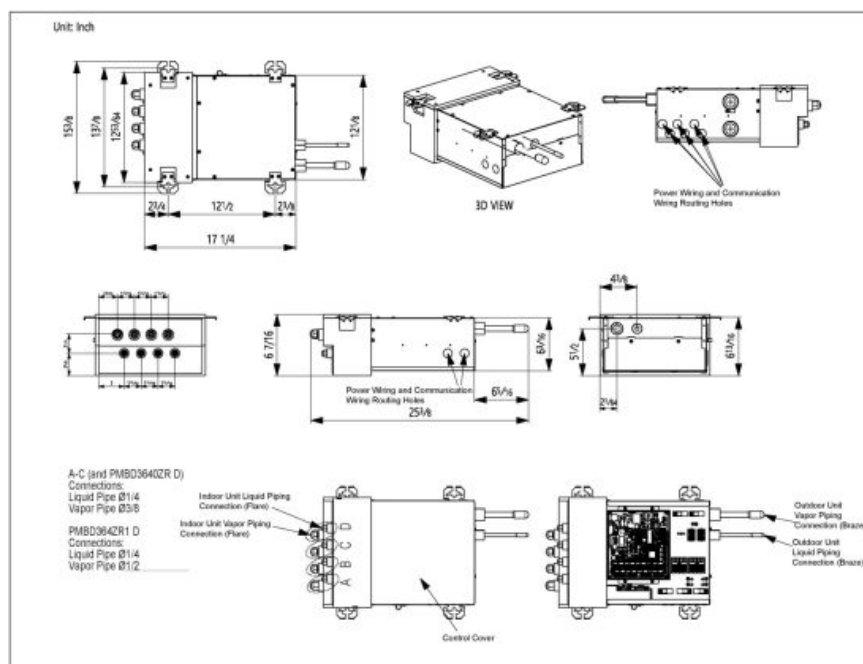
### Unit Data:

Net Weight (lbs.)	
Shipping Weight (lbs.)	19.6
Power Wiring: ODU→BDU, BDU→IDU (No x AWG) <sup>2</sup>	23.4 3 x 14, 3 x 14
Comm. Wiring: ODU→BDU, BDU→IDU (No x AWG) <sup>2</sup>	2 x 18, 2 x 18

### Notes:

1. Acceptable operating voltage: 187V-253V.
2. The power wiring and the communication wiring from the outdoor unit to the branch distribution unit, and from the branch distribution unit to the indoor unit is field supplied and must be stranded, shielded or unshielded (if shielded, it must be grounded to the chassis of the outdoor unit only). All wiring must comply with applicable local and national codes.
  - a. Power Wiring and Communication Wiring from ODU to BDU (No. x AWG) 3 x 14 / 2 x 18.

- b. Power Wiring and Communication Wiring from BDU to IDU (No. x AWG) 3 x 14 / 2 x 18.
3. Piping lengths:
- Maximum height difference between branch distribution unit and indoor units – 32.8 feet.
  - Maximum height difference between branch distribution unit and branch distribution unit – 49.2 feet.
  - Maximum piping length between branch distribution unit and indoor units – 49.2 feet.
4. The branch distribution unit should be installed inside of a building.
5. Must follow installation instructions in the applicable LG installation manual.
6. Socket adapter is not required for a 24MBH indoor unit connected to Port D of the PMBD3641ZR.
7. Includes socket adapters for Port D pipe connection with a 36 MBH indoor unit.



## Notes:


1. For PMBD3620ZR Unit, Ports A and B are Available.
2. For PMBD3630ZR Unit, Ports A, B, and C are Available.
3. For PMBD3640ZR and PMBD3641ZR Units, Ports A, B, C, and D are Available.

For continual product development, LG reserves the right to change specifications without notice.

© LG Electronics U.S.A., Inc., Englewood Cliffs, NJ. All rights reserved. "LG Life's Good" is a registered trademark of LG Corp. /[www.lghvac.com](http://www.lghvac.com)



## Documents / Resources

	<a href="#">LG PMBD3641ZR Four Port Branch Distribution Unit [pdf]</a> Owner's Manua l PMBD3641ZR Four Port Branch Distribution Unit, PMBD3641ZR, Four Po rt Branch Distribution Unit, Branch Distribution Unit, Distribution Unit
---	---

## References

- [User Manual](#)

■ LG  
◆ Branch Distribution Unit, Distribution Unit, Four Port Branch Distribution Unit, LG, PMBD3641ZR, PMBD3641ZR Four Port Branch Distribution Unit

---

## Leave a comment

Your email address will not be published. Required fields are marked \*

Comment \*

Name

---

Email

Website

☐ Save my name, email, and website in this browser for the next time I comment.

**Post Comment**

**Search:**

e.g. whirlpool wrf535swhz

**Search**

[Manuals+](#) | [Upload](#) | [Deep Search](#) | [Privacy Policy](#) | [@manuals.plus](#) | [YouTube](#)

This website is an independent publication and is neither affiliated with nor endorsed by any of the trademark owners. The "Bluetooth®" word mark and logos are registered trademarks owned by Bluetooth SIG, Inc. The "Wi-Fi®" word mark and logos are registered trademarks owned by the Wi-Fi Alliance. Any use of these marks on this website does not imply any affiliation with or endorsement.