

LG KNX Gateway VRF Systems Owner's Manual

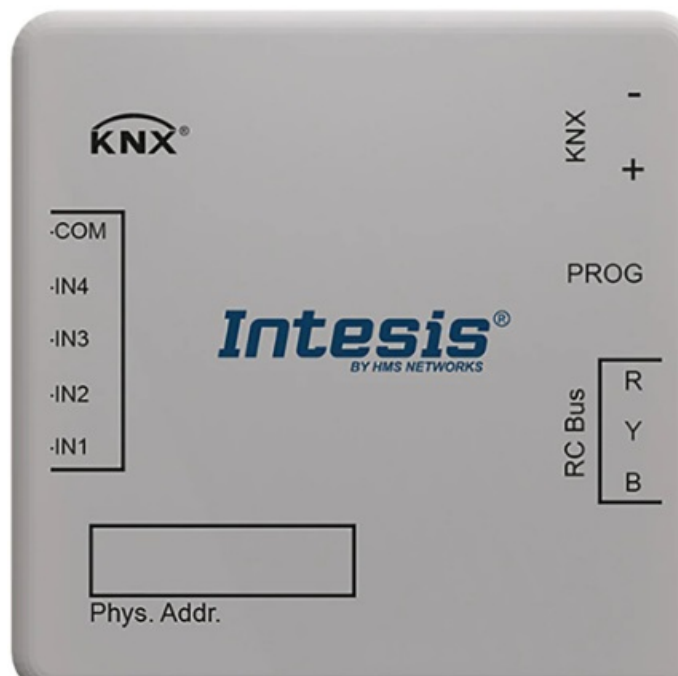
[Home](#) » [LG](#) » LG KNX Gateway VRF Systems Owner's Manual 

Contents

- [1 LG KNX Gateway VRF Systems](#)
- [2 KNX Gateway](#)
- [3 Key features](#)
- [4 Installation Scene](#)
- [5 Installation Scene & LG Topology](#)
- [6 FAQ](#)
- [7 Documents / Resources](#)
 - [7.1 References](#)
- [8 Related Posts](#)



LG KNX Gateway VRF Systems



KNX Gateway

Technical and service support must come from Intesis directly.

LG Electronics Inc. warrants and assumes no liability for this product.

This is the landing page of INTESIS MAPS: <https://www.intesis.com/products/intesis-maps-home>

INKNXLGE0160036 (Indoor Unit -16) / INKNXLGE0640036 (Indoor Unit -64)

Specially designed to allow monitoring and bidirectional control of all the parameters and functionality of LG air conditioners from KNX protocol.



Key features

- 2 model types
- Up to 64 connectable indoor units
- Direct connection to KNX TP1 bus
- Independent management of communications
- Power supply: 9 to 36V DC or 24V AC (not included)
- KNX Power consumption: Sma

- Standard DIN-Rail 6 modules enclosure
- LG Slave Central controller (for example, AC Smart) and PD! can be operated with KNX gateway

Key benefits

- Easy&quick installation user comfort
- Flexible integration (Intesis MAPS & KNX) Export Group Address by "csv" file to ETSS/6
- Compatibility with all LG products (Air-Conditioning, ERV, Hydrokits and AWHP)
- Ergonomic & friendly user interface (using the supplied software Intesis MAPS)
- One single tool for settings, commissioning, SW update and troubleshooting

Key messages

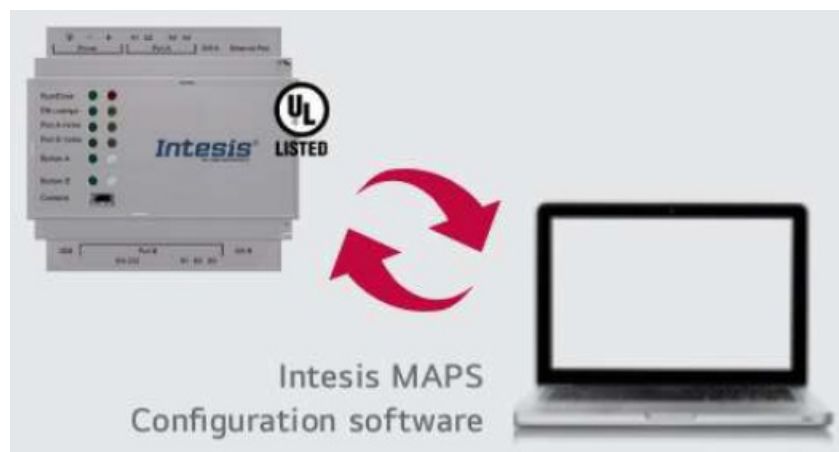
- Manage your building with an advanced building automation solution
- Energy savings
- Power consumption measurement using additional LG POI device
- Bidirectional communication between LG & KNX
- Your system diagnostics accessible through LG Error codes

MODEL NAME	MAX. CONNECTION INDOOR UNITS
INKNXLGE016O036	16
INKNXLGE064O036	64

Intesis MAPS is Configuration Software for Intesis KNX Gateway Series

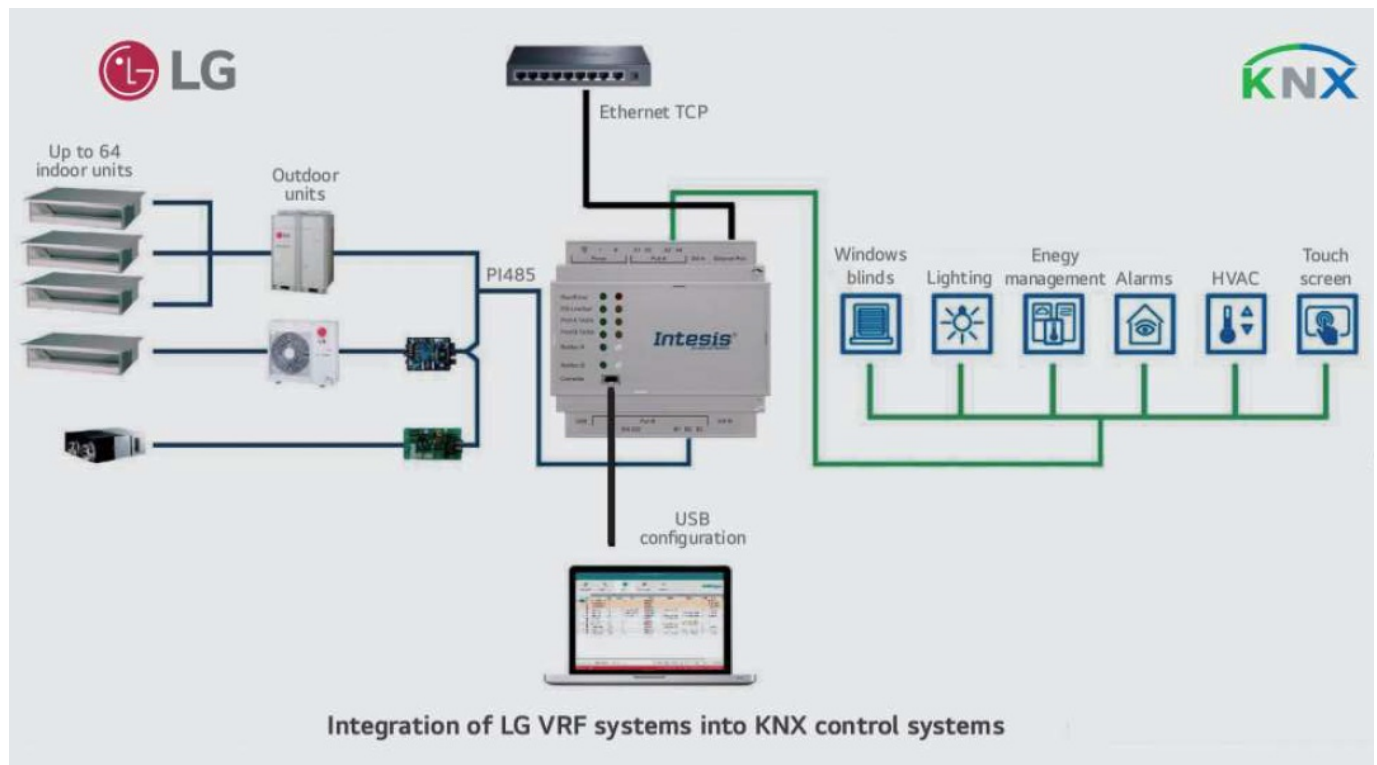
Easy to use tool for the configuration of Intesis gateway, in a fast and effective way.

It offers the maximum integration possibilities with a minimal knowledge required on the system to be integrated.



- Only needed during configuration.
- One single tool for the configuration of the whole range of Intesis KNX gateway series.
- Supplied with Intesis gateway with no additional cost.
- Configuration examples for all systems that can be integrated
- Mapping table editable using excel, allowing a simple and fast association of KNX Group
- Addresses, exported from ETS, to Intesis gateway's datapoints.
- Includes powerful and useful features for configuration, setup and troubleshooting.

Installation Scene



Direct download of INTESIS MAPS configuration software



INKNXLGE001ROOO (For Indoor Unit)

LG-KNX gateway allows fully bi-directional communication between LG VRF systems and KNX installations. One gateway, one AC unit: This is the solution of ONE-TO-ONE integration. All required KNX DPT objects are fully compatible with all KNX thermostats in the market. The gateway is wired directly to an indoor unit. This allows not only the control of the main AC functions such as operating mode, fan speed, temperature setpoint, but also the monitoring of errors and alarms.



Key features

- KNX certified.

- Configured by ETS standard configuration tool.
- KNX database available on ETSS / 6
- Reduced dimensions allowing a quick installation inside the Air Conditioner unit.
- All the required DPT objects are 100% compatible with all KNX thermostats in the market.
- Energy efficiency functions, such as “timeout: “open window” or “occupancy
- Smooth integration of KNX thermostats allowing the control of the AC unit by the thermostat’s own temperature sensor (Virtual Temperature)
- Simultaneous control of the AC unit by LG remote controller and KNX.

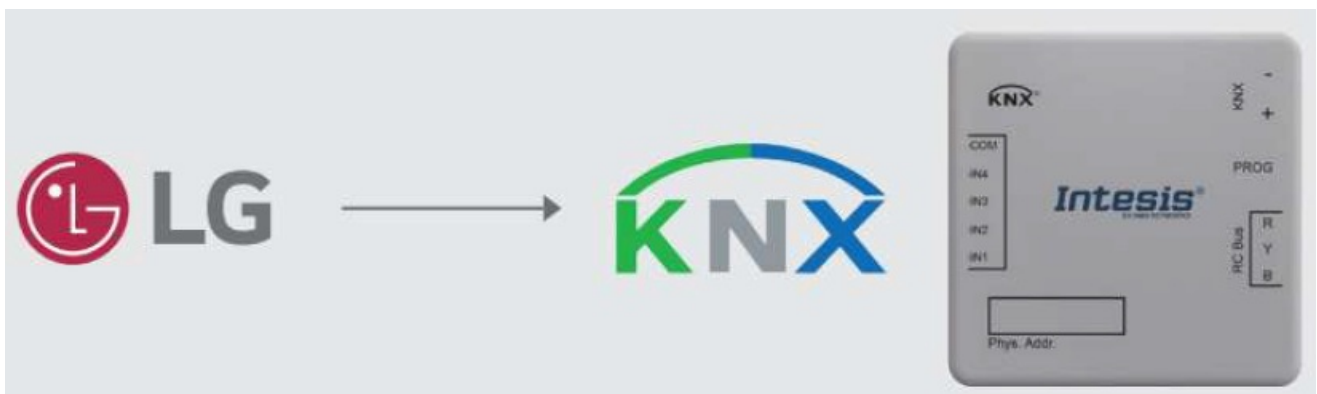
Key benefits

- Optimization cost for small or medium installations
- Decentralized device control: one gateway connected to each indoor unit.
- Easy integration on KNX installations
- Intuitive configuration

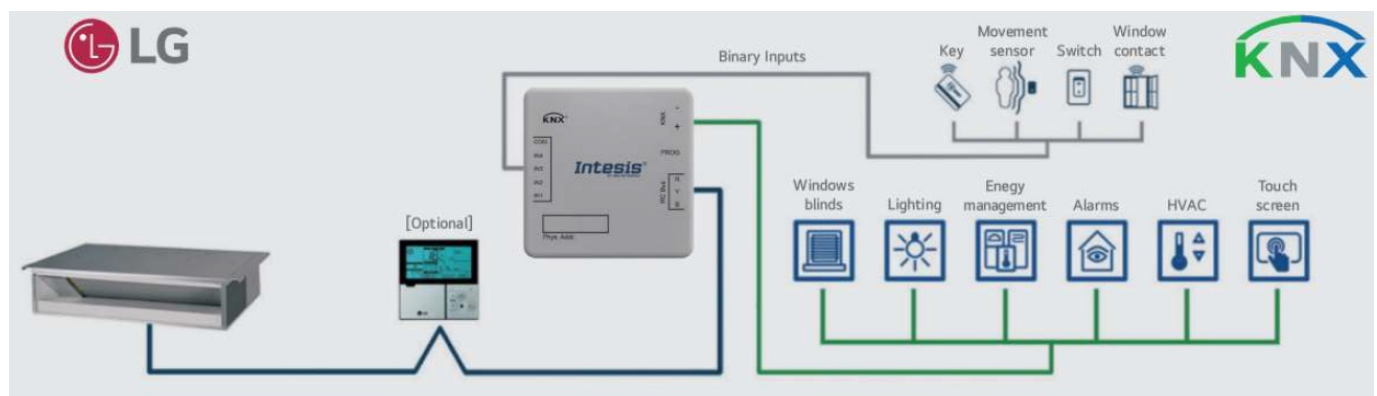
Key messages

- Total control and monitoring of the AC unit from KNX. including AC unit’s internal variables, running hours counter (for filter maintenance control) and error indication (CH Error Codes).
- Fully integrated solution on Engineering Tool Software ETSS / 6 by database product

KNX LG solution concept

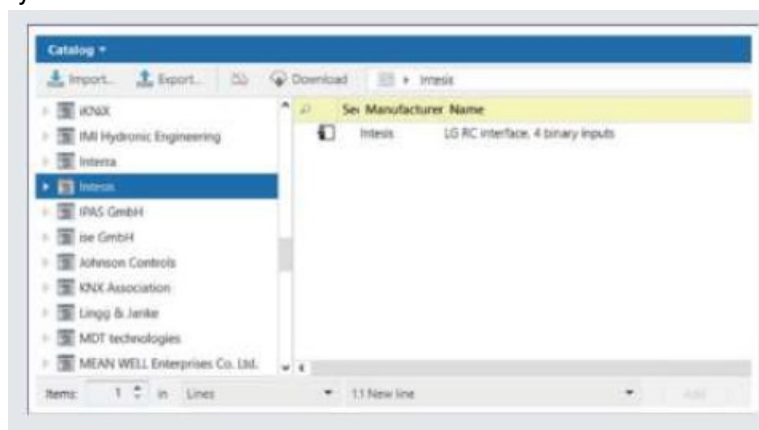


Installation Scene & LG Topology

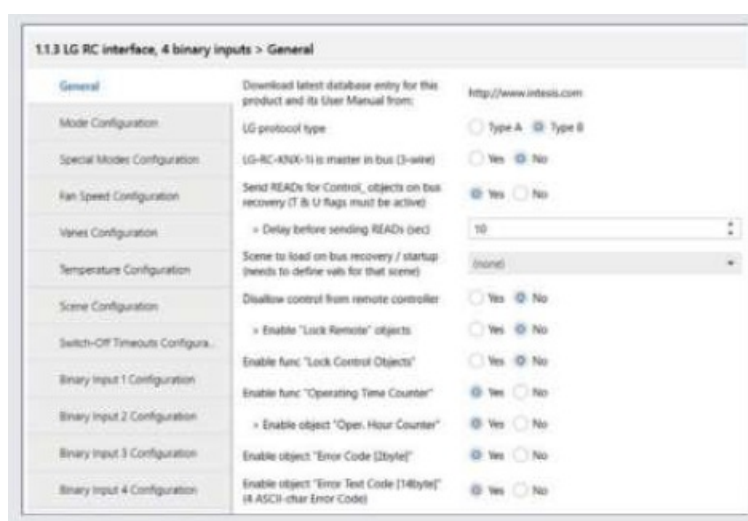


KNX Product

Database available directly on ETSS/6 under INTESIS manufacturer



Configuration by ETS Data Base



FAQ

What is the KNX Gateway used for?

The KNX Gateway is used to enable communication between LG HVAC systems and KNX home building automation systems, allowing for centralized control of LG air conditioners.

How many indoor units can the KNX Gateway control?

The KNX Gateway can control up to 16 indoor units with the c54 model and up to 32 indoor units with the c64 model.

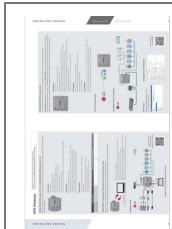
What software is used to configure the Intesis KNX Gateway?

The Intesis MAPS software is used to configure the Intesis KNX Gateway series.

Is the KNX Gateway compatible with all LG indoor units?

Yes, the KNX Gateway is compatible with LG indoor units and can be integrated into KNX systems for centralized control.

Documents / Resources



[LG KNX Gateway VRF Systems](#) [pdf] Owner's Manual
KNX Gateway VRF Systems, Gateway VRF Systems, VRF Systems

References

- [User Manual](#)

[Manuals+](#), [Privacy Policy](#)

This website is an independent publication and is neither affiliated with nor endorsed by any of the trademark owners. The "Bluetooth®" word mark and logos are registered trademarks owned by Bluetooth SIG, Inc. The "Wi-Fi®" word mark and logos are registered trademarks owned by the Wi-Fi Alliance. Any use of these marks on this website does not imply any affiliation with or endorsement.